

Providing Environmental Solutions

We provide solutions that support both implementing and improving environmental management so that our customers can achieve both their management strategies and reduced environmental burdens.

Basic Approach

Environmental Solutions that Support our Customers' Environmental Management

In the context of increasingly severe economic crises and environmental problems, our customers must promote environmental management that aims at establishing management strategies and reductions in environmental burdens. Both are essential if they are to maintain and continue their business.

We at Fujitsu provide environmental solutions to support our customers' environmental management. We evaluate our customers' environmental activities and we "render visible" issues that must be improved in an integrated manner from a management standpoint. We propose measures that resolve environmental issues in a way that conforms with our customers' business strategies. Furthermore, our efforts are not limited to evaluating the current situation and proposing measures; we also support continuously increasing the level of our customers' environmental management by iterating the PDCA cycle.

When implementing an environmental solution, we propose optimal combinations of products and services from our extensive lineup that marshals Fujitsu's rich experience and know-how, including the collection and analysis of environmental information from within the organization, chemical substances management, facilities infrastructure management, and office power consumption management.

Environmental Solution Example

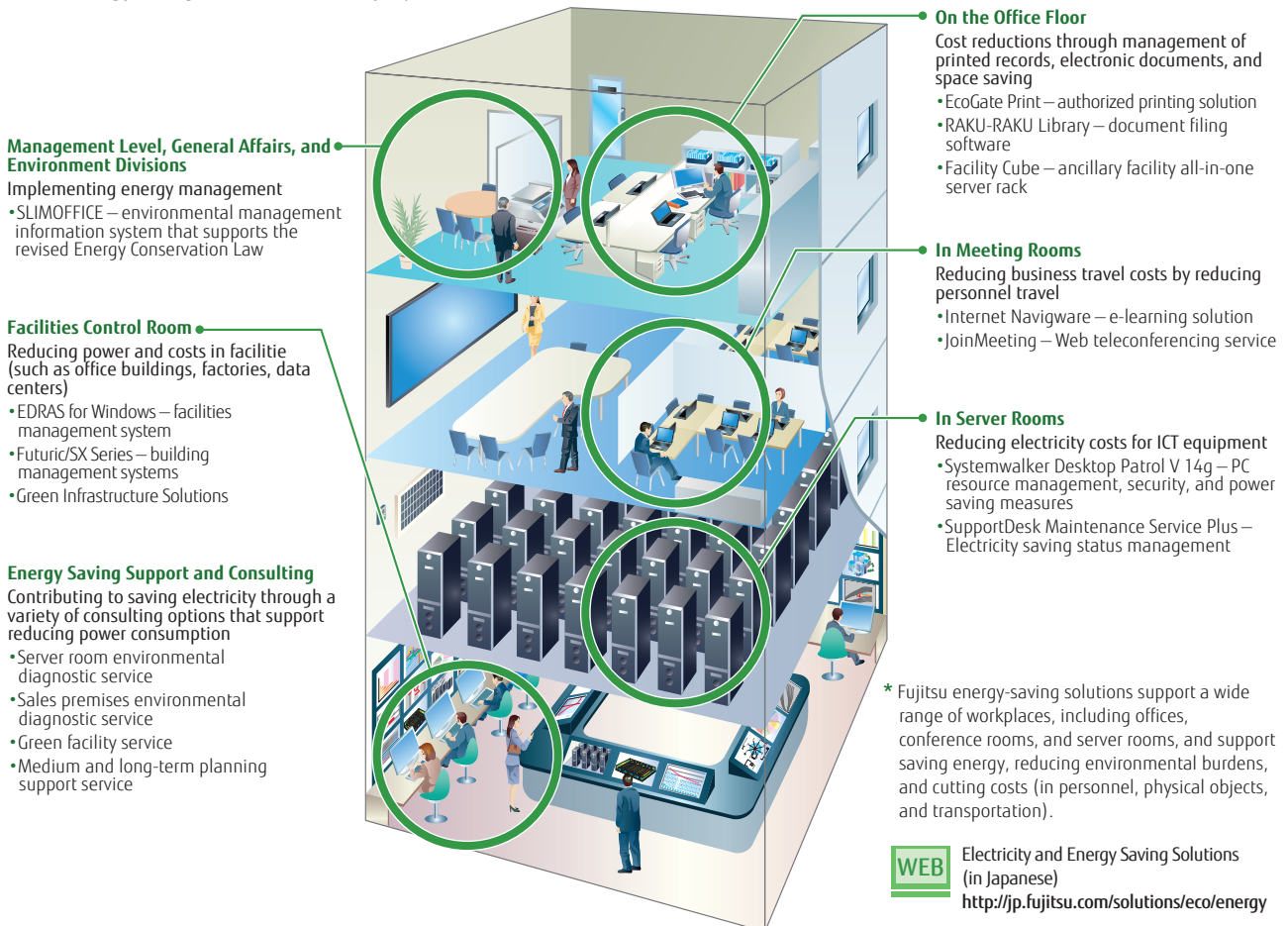
Starting to Provide Energy-Saving Solutions

According to the revisions of the Japanese Energy Conservation Law that went into effect in April 2010, every individual business operator whose total annual energy use exceeded 1,500 kl when converted to its crude-oil equivalent must report that usage to the government. As a result, there were businesses mainly involved in office work and manufacturers owning medium-sized factories who did not previously have to file but were now required to report this usage. Furthermore, businesses subject to this law are required to make efforts to improve energy efficiency by at least 1% on average per year. For corporations, in addition to complying with such legal obligations, saving energy is a critical issue that they must face from the standpoints of both CSR and cost reduction.

Therefore, in FY 2010, we released "energy-saving solutions" that combine tools and processes to resolve such problems.

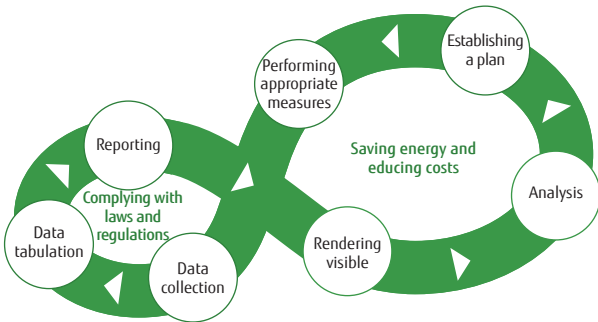
First, processes form a foundation in which we iterate the PDCA cycle, and this becomes the cornerstone of energy-saving activities. Even if a business simply introduced new equipment, collected and tabulated energy consumption data from each division, and reported that to the government to deal with the revised Energy Conservation Law, this would be mere compliance with the law and would not be a true resolution of the problem. The essential aspects here are saving energy and reducing costs

Various Energy-Saving Solutions Provided by Fujitsu



by implementing the whole process of rendering the data visible, analysis, forming a plan, and taking any required measures. Also, after taking the required steps to check the effect, they must also collect and tabulate data and aim for further improvements. We at Fujitsu support our customers in implementing this Infinity Loop (shown in the accompanying figure).

The "Infinity Loop" that Promotes Energy Savings and Cost Reductions



Furthermore, tools are necessary to actually iterate the PDCA cycle in accordance with the process. For example, we use the SLIMOFFICE environmental management information system in data collection and tabulation, reporting, and rendering visible. We support the analysis and forming of phased plans with consulting

services provided by Fujitsu Facilities Ltd. For the phase in which the necessary measures are implemented, we provide an extensive set of Fujitsu tools, including electronic document creation, management of printed records, and videoconferencing tools. These processes and tools form two-fold support and powerful back up for our customers' daily energy saving efforts.

Additionally, it is important to increase the motivation of each and every employee to achieve energy savings. Fujitsu doesn't just render data visible to those in charge of energy savings, we also consider it important to make this data visible to employees. For example, by creating a mechanism that displays the previous day's energy usage when an employee arrives at work and first turns on his or her PC, it becomes possible to rank individuals or divisions and to recognize individuals or divisions that achieve energy saving targets. Raising the interest and motivation of employees with positive approaches such as this can be effective in leading to successful energy saving efforts. We will continue to work to improve our support for our customers' energy saving efforts through processes, tools, and proposals that lead to increased employee motivation.

As an electricity-saving measure associated with the Great East Japan Earthquake, we started an energy-saving advice service in June 2011 through which we can provide the Fujitsu Group's energy saving know-how to our customers.

Adoption Example Dainippon Screen Mfg. Co., Ltd.

Consolidated management of environmental management information achieved and data collection and tabulating work load reduced by 20%

Dainippon Screen, which develops and manufactures printing equipment and manufacturing equipment for semiconductor and display products, had previously managed their energy consumption on a per business site basis. The enormous amount of work required to organize the data was a burden when their environment and safety promotion division assembled the data for every business site.

Here, after looking into the systematizing of this work, the superiority of a standard template and pricing became evident and the customer adopted the Fujitsu SLIMOFFICE EX environmental management system. Dainippon Screen started using this system in 2009.

SLIMOFFICE EX is a dedicated software system for consolidated management and analysis of the entire process from the collection of environmental performance data through environmental accounting. This system implements our standard template, which assembles

Fujitsu's know-how and can easily create the materials required for environmental reporting documents and the regular reports that must be filed under Japan's revised Energy Conservation Law.

As a result of adopting SLIMOFFICE EX, in addition to consolidating management of relevant information and becoming able to analyze its environmental activities, Dainippon Screen was able to reduce the amount of work associated with data collection and tabulation by about 20% and its CO₂ emissions by 13%.

Furthermore, in July 2010, Dainippon Screen acquired the world's first international certification for the ISO 50001 energy management system of their Rakusai business site. In addition to support for ISO 50001, we also plan to apply the SLIMOFFICE EX software system to activities other than environmental ones, for example labor and safety management.

Overview of SLIMOFFICE EX

