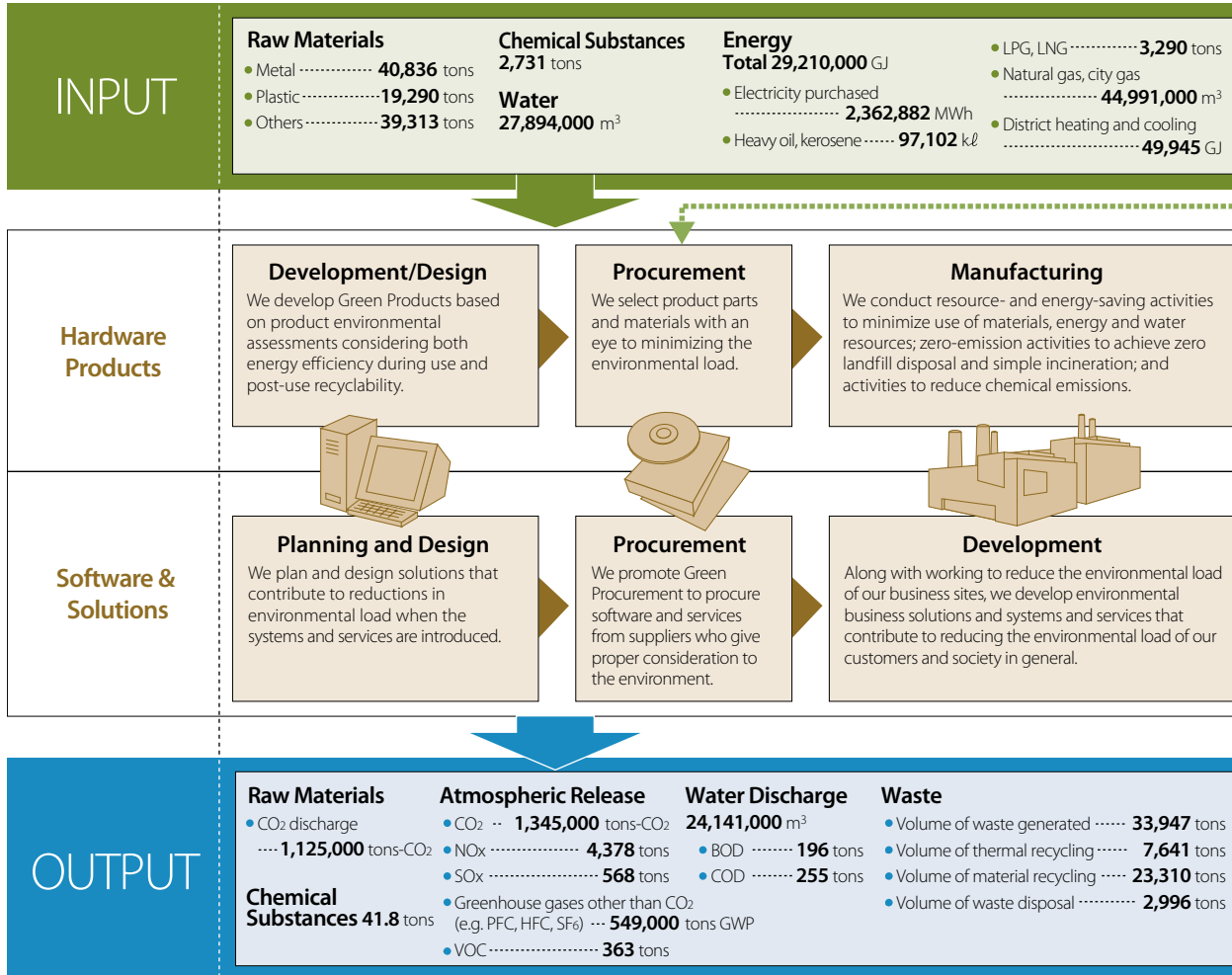


# Operating Activities and Environmental Load (Material Balance)

We promote environmentally friendly business activities through overall quantitative assessment of our environmental load from the life cycle and supply chain standpoints.

## Material Balance



## Calculation Methods

INPUT		
Development / Planning & Design	Raw Materials	Material inputs to our major products* shipped in fiscal 2007 (raw materials per unit for each product times the number of units shipped in fiscal 2007). We have modified the calculation method used starting this fiscal year; packaging materials and accessories are now classified under "Others". (Using this method to calculate the value of the previous fiscal year gives 39,249 tons). Glass is also classified under "Others". * Major products: Personal computers, mobile phones, servers, workstations, storage systems, magnetic disk drives, MO drives, printers, scanners, financial terminals, retail terminals, routers, LAN access equipment, access network products, mobile phone base stations, and electronic devices.
Procurement	Chemical Substances	Volume of PRTR Law target chemicals handled by plants/sites in fiscal 2007
Manufacturing / Development	Water	Volume used by plants/sites in fiscal 2007
Manufacturing / Development	Energy	Electricity, oil and gas consumed by plants/sites in fiscal 2007
Distribution / Sales	Energy	Energy consumption in transportation in fiscal 2007
Usage	Energy	Electricity consumption by major products shipped in fiscal 2007 (Assumed hours of use, per product x age-based electricity consumption x the number of units shipped in fiscal 2007)
Collection/Reuse/Recycling		The weight ratio of recycled parts and resources with respect to the processing volume of post-use products is calculated according to the method of the Japan Electronics and Information Technology Industries Association. It excludes collected waste other than post-use electronic products.

With Our Customers

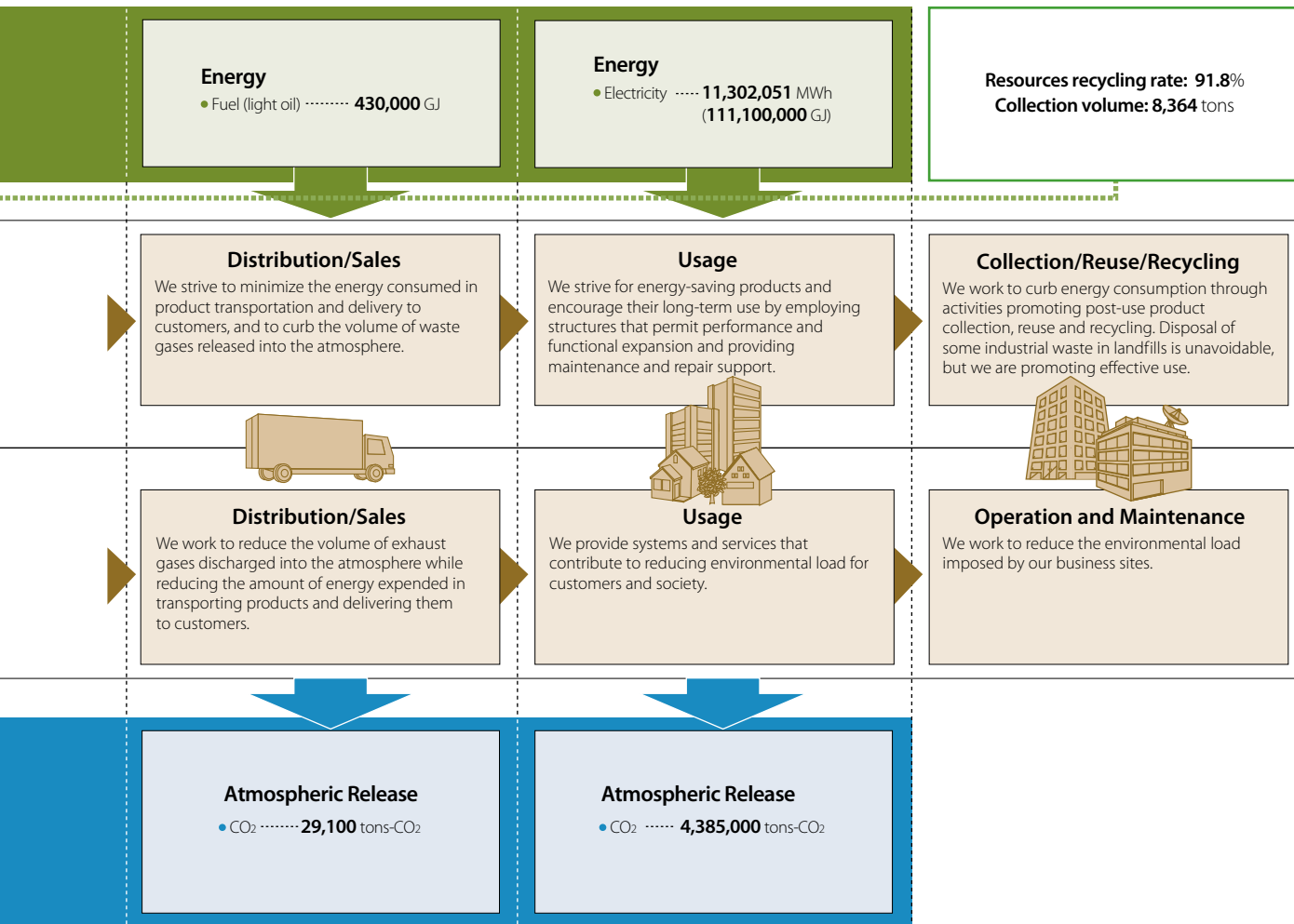
With Our Employees

For Our Shareholders and Investors

With Our Business Partners

With Local and International Communities

For the Environment



**Calculation Methods**

OUTPUT		
Development / Planning & Design	Raw Materials	Material inputs to our major products* shipped in fiscal 2007 (per-unit volume of CO <sub>2</sub> emitted from mining the resource until it becomes a raw material for each product times the number of units shipped in fiscal 2007) * Main products: Personal computers, mobile phones, servers, workstations, storage systems, magnetic disk drives, MO drives, printers, scanners, financial terminals, retail terminals, routers, LAN access equipment, access network products, mobile phone base stations, and electronic devices.
Procurement Manufacturing / Development	Chemical Substances	Measuring the concentrations of PRTR Law target chemicals discharged through plants' drains and exhaust ports in fiscal 2007 and multiplying the total volume discharged (nickel compounds, manganese compounds, etc.) or total volume emitted (xylene, toluene, etc.), or calculating based on the chemical substance balance (xylene and toluene).
	Atmospheric Release	CO <sub>2</sub> : CO <sub>2</sub> discharge volume associated with energy consumption by plants/sites in fiscal 2007 (Energy consumption times CO <sub>2</sub> conversion factor) NOx, SOx: Calculated from concentrations in gases discharged from vents (boilers, etc.) by plants/offices in fiscal 2007 Greenhouse gases other than CO <sub>2</sub> : Discharge volume of process gases used in semiconductor manufacturing in fiscal 2007. (Calculated by formulas such as <volume of gas used> x <ratio consumed in reactions> x <detoxification ratio>) VOC: Emission amounts of the substances subject to emissions restrictions stipulated by the four electric and electronics associations for factories and business sites for fiscal 2007
	Water Discharge	Wastewater volume discharged by plants/sites into sewerage or rivers in fiscal 2007 BOD: A measure of the emission volume of organic pollution of water discharged by businesses employing the volume of oxygen consumed when organic matter in water is removed by microbial activity COD: A measure of the emission volume of organic pollution of water discharged by businesses employing the volume of oxygen consumed when organic matter in water is removed chemically by oxidation.
	Waste	Volume of Waste Generated: The volume of waste disposal by plants/sites in fiscal 2007 Volume of Waste Disposal: The volume of landfill disposal and simple incineration by plants/sites in fiscal 2007 (including waste which is not a zero emission target)
Distribution/ Sales	Atmospheric Release	The total CO <sub>2</sub> volume in fiscal 2007, including both fuel consumption by Fujitsu's shipping business when measurable, and shipping distance x freight weight x coefficient when the freight of companies other than Fujitsu is included, as in mixed load transportation
Usage	Atmospheric Release	The volume of CO <sub>2</sub> emissions during use of major products shipped in fiscal 2007 (Assumed hours of use per product, age-based CO <sub>2</sub> emissions x units shipped in fiscal 2007)

With Our Customers  
 With Our Employees  
 For Our Shareholders and Investors  
 With Our Business Partners  
 With Local and International Communities  
 For the Environment