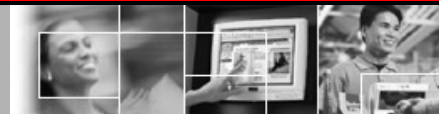


Retail Platform Software Support



*Team***PoS3000 D22 Touch Screen Driver Installation Guide**

*Issue 0.01
Feb 3, 2006
Status: WIP
Channels: ALL
Author: TAH*



*Team***PoS3000 D22 Touch Screen Driver Installation Guide**

This document and the information contained herein are distributed by Fujitsu Transaction Solutions Inc. ("Fujitsu") to the recipient for the purpose of facilitating business transactions with Fujitsu.

Fujitsu endeavors to ensure that the information in this document is accurate and complete at the time of printing, but does not accept liability for any error or omission.

Table of Contents

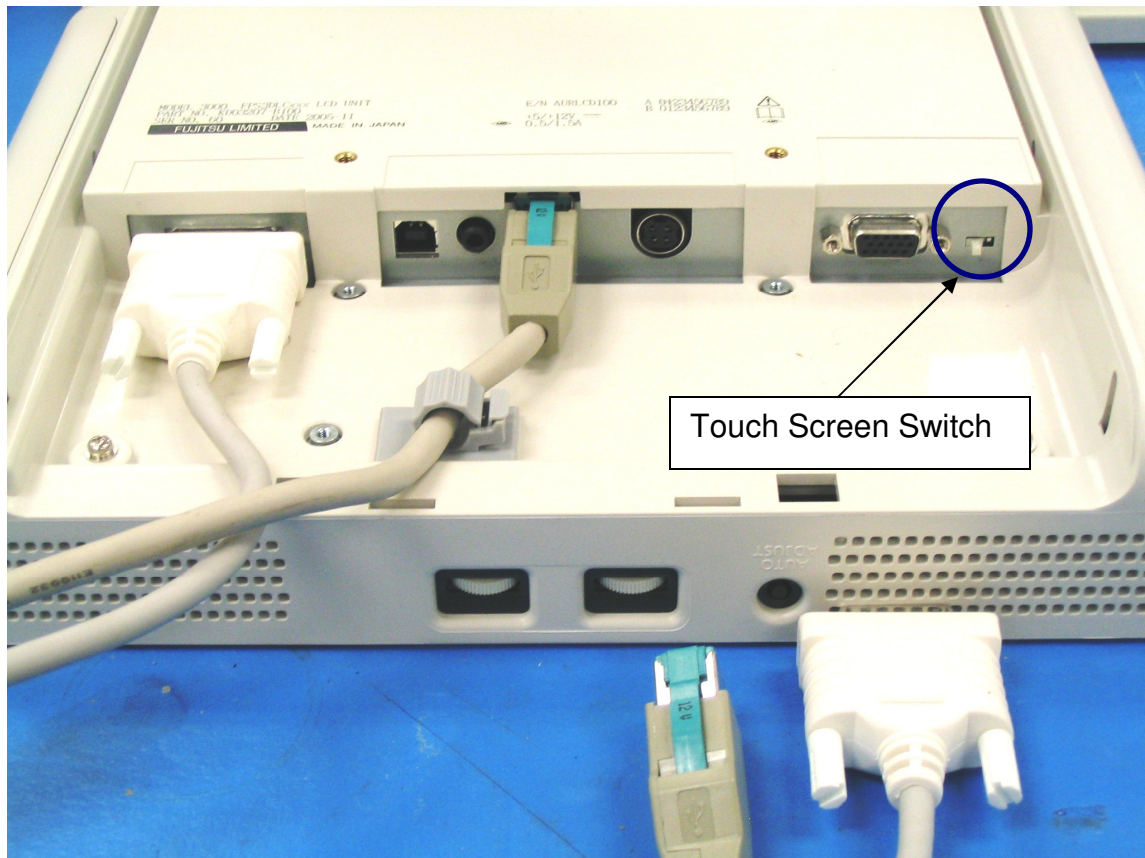
1. Overview	3
2. Loading Touch Screen Device Drivers	4
2.1 Installing Primary Touch Driver For D22 LCD	5
2.2 Installing Secondary Touch Driver For D22 LCD	7
3. Calibrating Touch Screen(s)	9
3.1 Calibrating a single D22 touch screen	9
3.2 Calibrating Dual D22 touch screens.....	12
4. Uninstall D22 Touch Driver	16

1. Overview

The *TeamPoS3000* D22 touch screen is seen as a USB mouse HID input device. The touch screen will be detected as a mouse by simply plugging the D22's Powered USB cable into the *TeamPoS3000*.

While the touch screen will be detected as a mouse without loading any special device driver, a special device driver must be loaded to calibrate the touch screen and to use the touch screen as the second display in Dual Monitor Extended mode. The secondary display is the screen that does **not** contain the "Start" icon on the taskbar when in dual monitor Extended mode. While dual D22's will operate in the video adapter Clone mode for Demo's, this mode should **not** be used in production. Only one of the two D22 touch screens can be calibrated in Clone mode.

There is a switch on the D22 that defines whether the D22 touch screen is to be used as the primary (Start icon) or secondary display. The switch position is only read when the display is powered on.



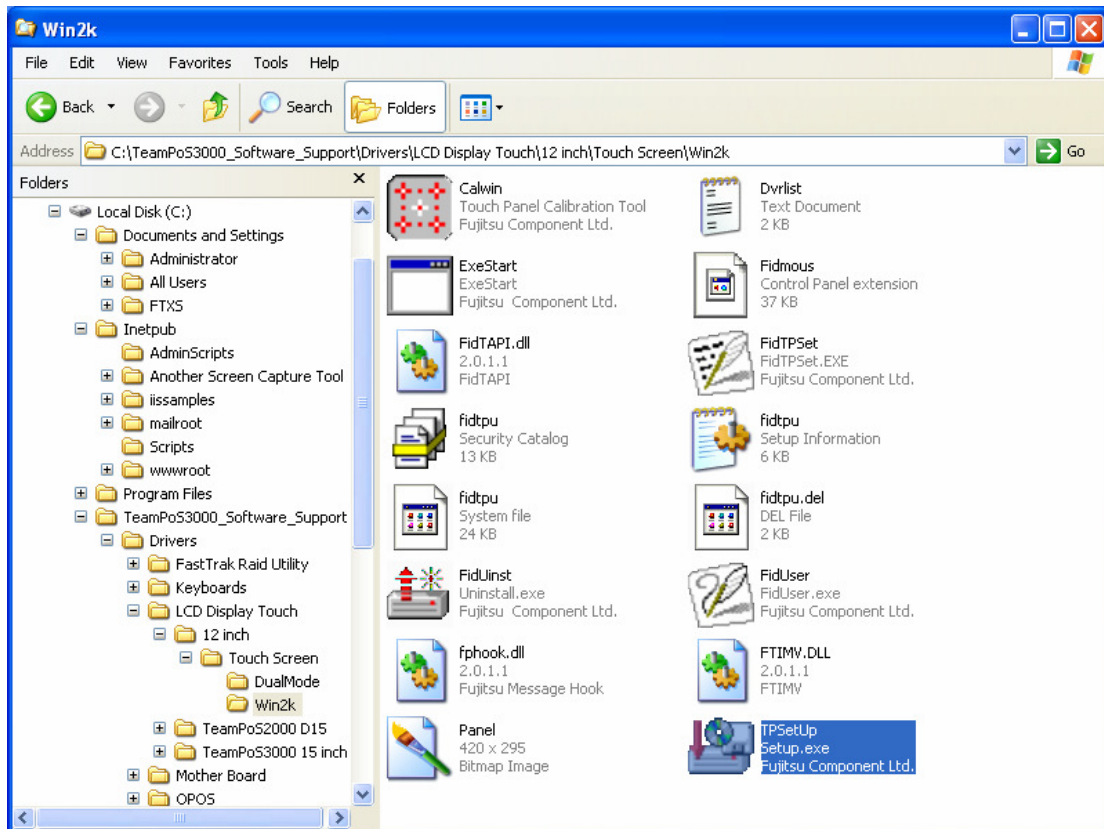
The picture represents the switch in the first display (Start icon) mode. Set both switch's to a primary if using the Clone Mode for dual screen support.

2. Loading Touch Screen Device Drivers

The D22 touch screen can be defined as either a Primary or Secondary display. Only use the secondary mode when the D22 is to be used as the secondary display in a dual monitor configuration operating in “Extended Mode”. The switch on the secondary display must be set to 2. When operating a single D22 as a secondary display with another display as primary, you must load both the primary and secondary display drivers. The secondary touch screen driver will not load without the primary touch screen driver being loaded. The switches on the displays are only read on power on and must be set correctly before the drivers are loaded. If the drivers are loaded with the switches in the incorrect mode, uninstall the drivers and reinstall once the switch settings have been corrected and the display powered on.

	Switch	Driver(s)
One D22 as Primary	1	Load Primary Driver
Two D22's as both Primary and Secondary	1 and 2	Load Primary and Secondary Driver
Two D22's in Clone Mode	1 and 1	Load Primary and Secondary Driver
One D22 as secondary (another display type is Primary)	2	Load Primary and Secondary Driver (Must load Primary driver or Secondary driver will not load)

2.1 Installing Primary Touch Driver For D22 LCD



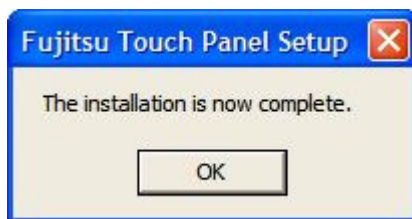
1. Navigate to the folder containing the Primary Fujitsu D22 touch driver, The file can be found in the folder “C:\TeamPoS3000_software_Support\Drivers\LCD Display Touch\12 inch\Touch Screen\Primary Driver”, and run TPSETUP.EXE.



2. When the Touch Panel Setup screen appears, click “yes” to continue

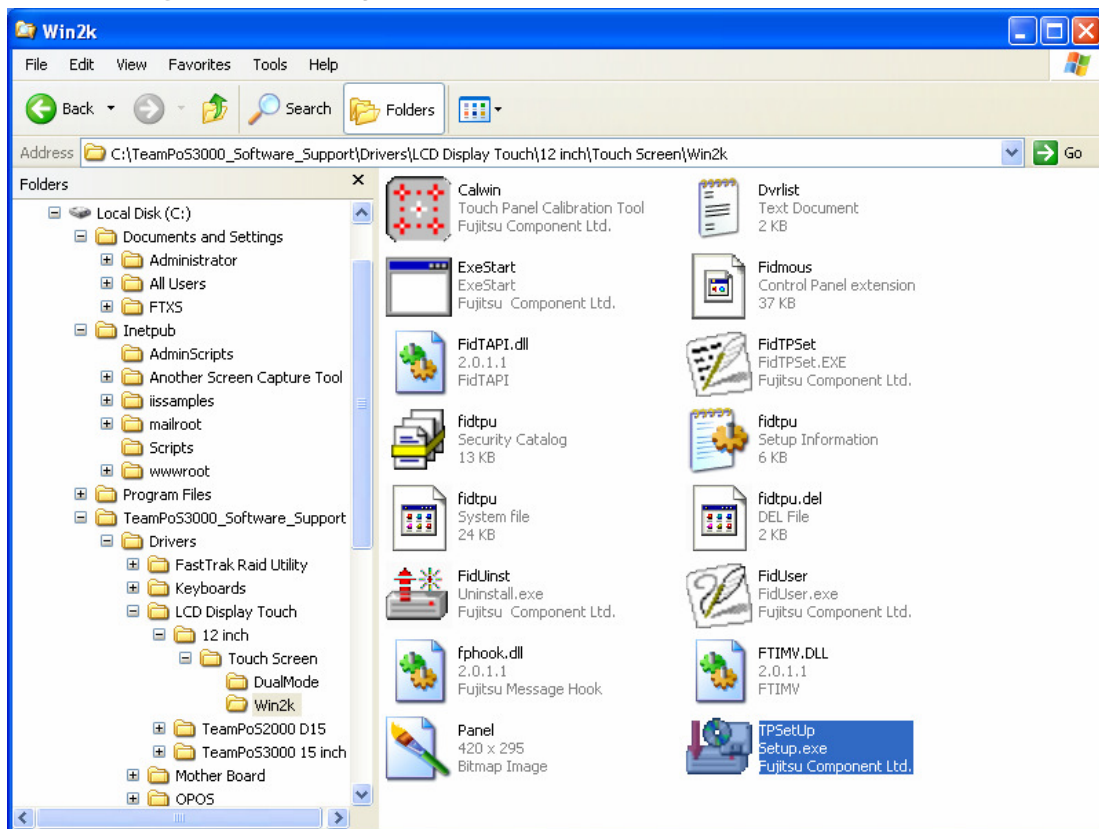


3. Click “Continue Anyway” at the Logo Warning screen to complete the installation.

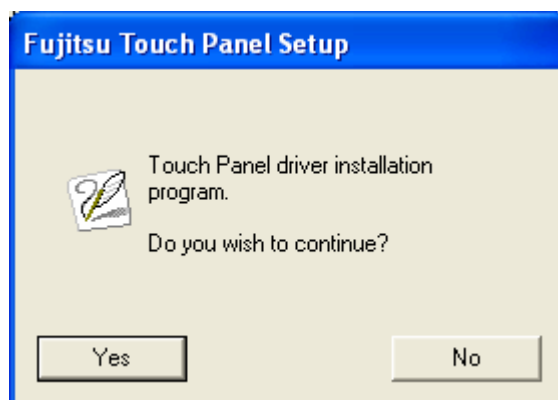


4. This will load the D22 touch driver and put an icon in the control panel to run the touch utility.
5. If not operating a D22 in secondary mode got to section X.

2.2 Installing Secondary Touch Driver For D22 LCD



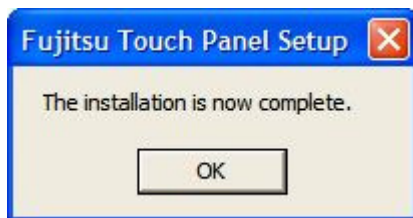
1. Navigate to the folder containing the Primary Fujitsu D22 touch driver, The file can be found in the folder “C:\TeamPoS3000_software_Support\Drivers\LCD Display Touch\12 inch\Touch Screen\Secondary Driver)”, and run TPSETUP.EXE.



2. When the Touch Panel Setup screen appears, click “yes” to continue



3. Click "*Continue Anyway*" at the Logo Warning screen to complete the installation.

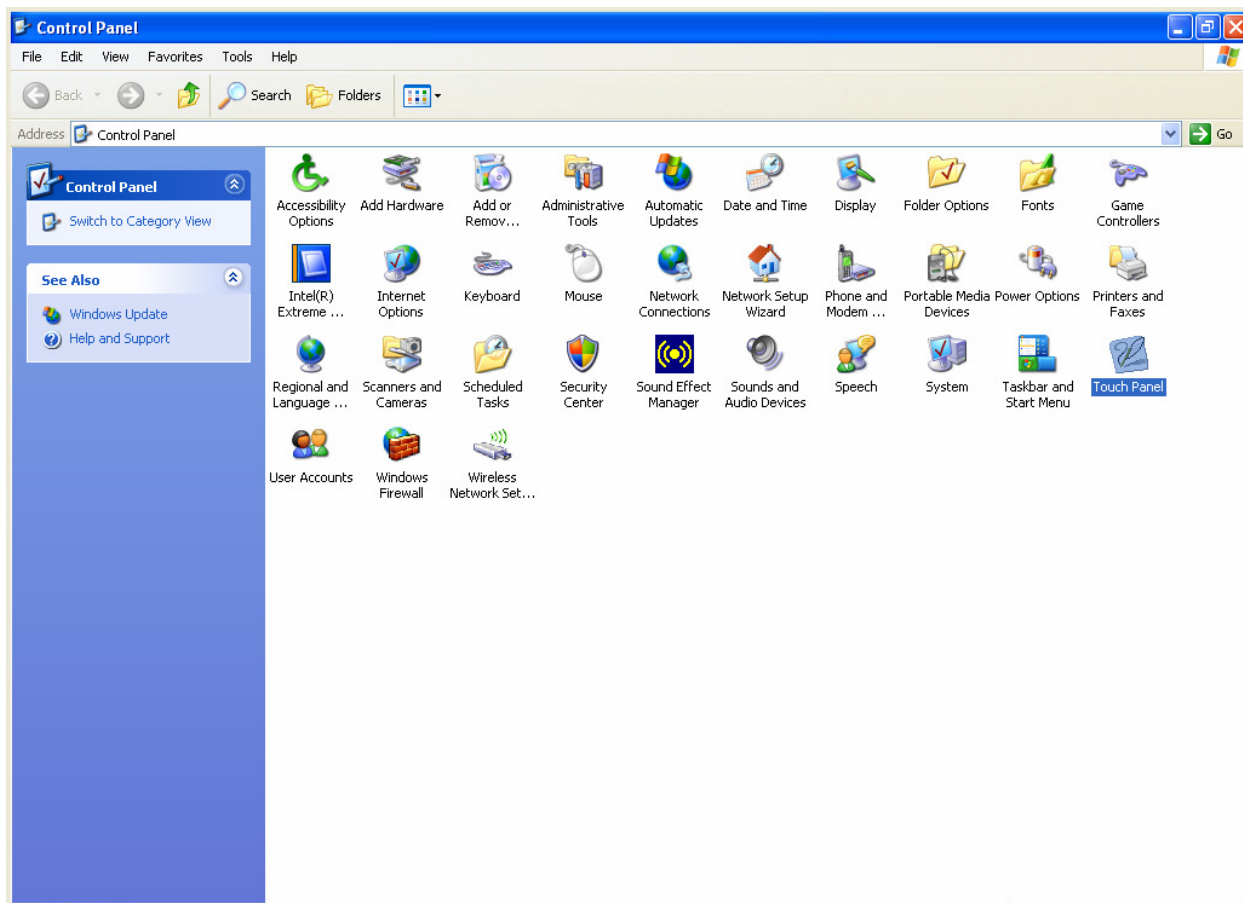


4. This will load the D22 touch driver and put an icon in the control panel to run the touch utility.
5. If not operating a D22 in secondary mode got to section X.

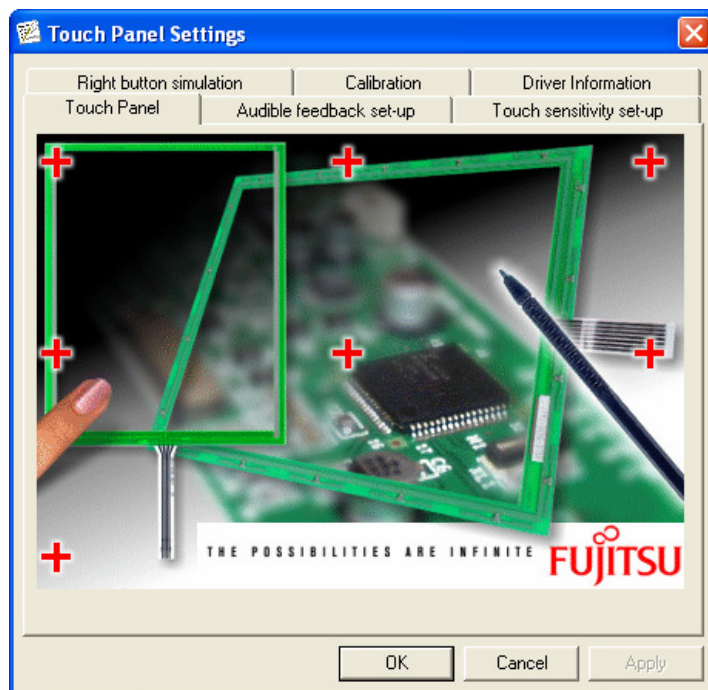
3. Calibrating Touch Screen(s)

If using two D22's go to Section 3.2.

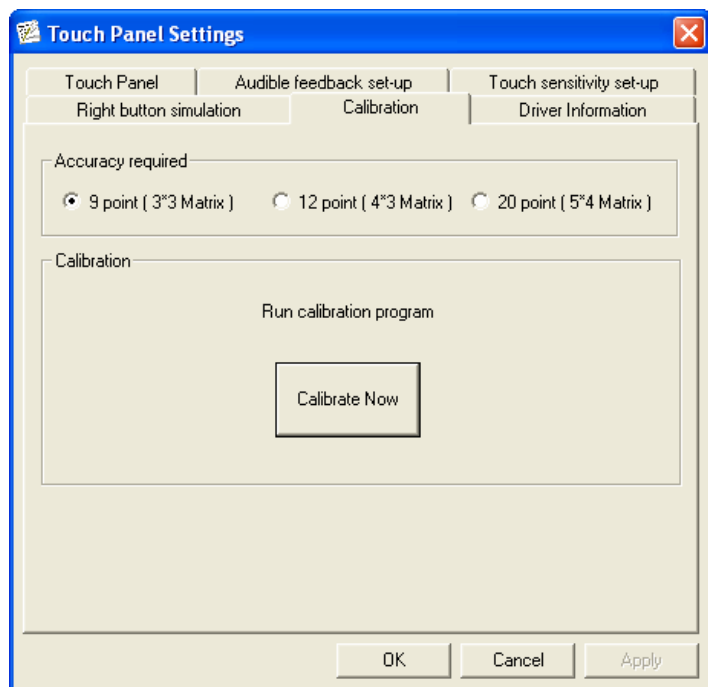
3.1 Calibrating a single D22 touch screen



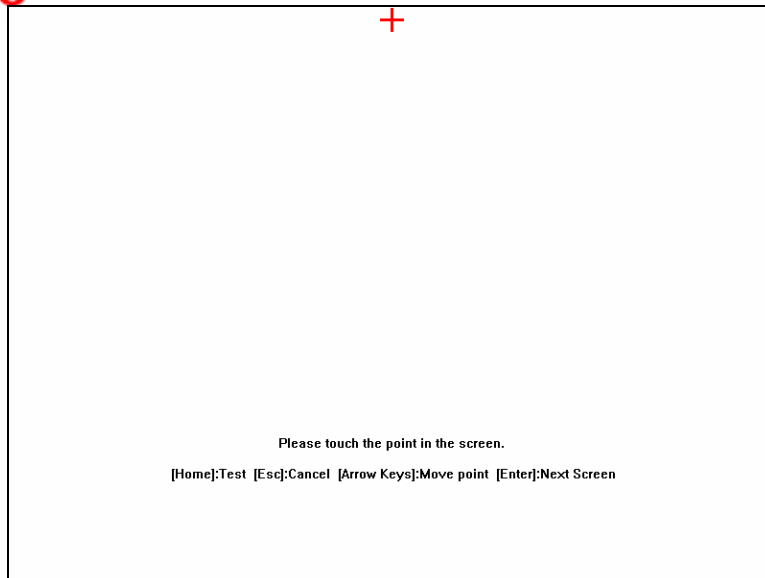
1. Go to the control panel and verify the Micro Touch icon is displayed. Double click on the icon to run the calibration procedure.



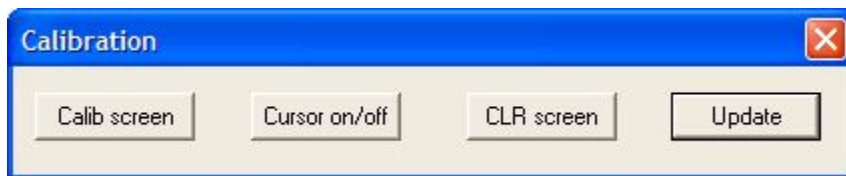
2. Click on the calibration tab. and select “Calibrate Now”



3. Select “Calibrate Now”



4. Touch the "+" until it turns blue and moves across the screen to the next position. Continue until all the positions have been touched

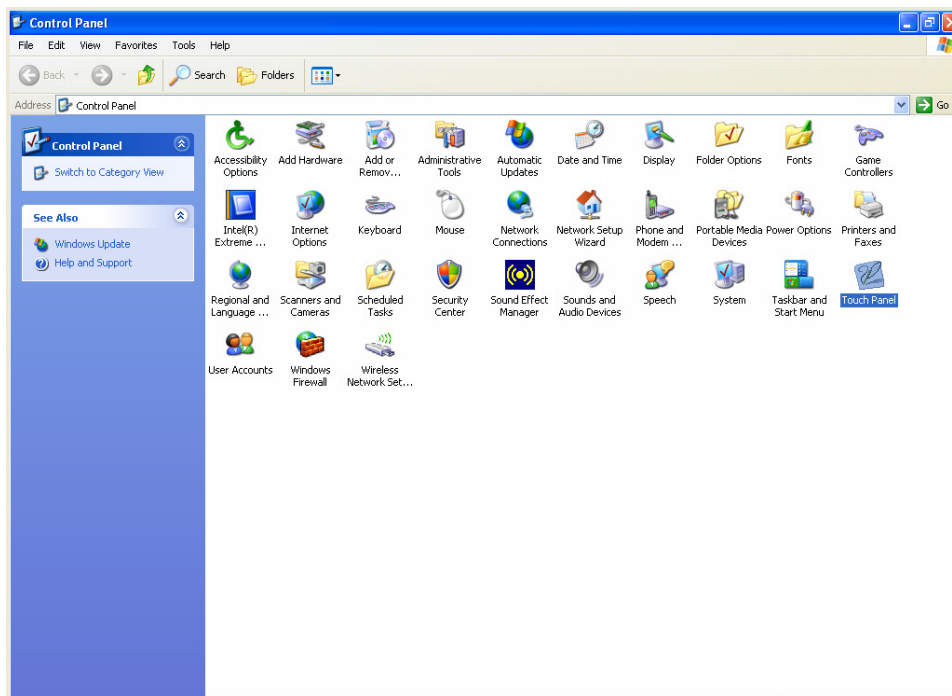


5. When calibration is complete a "Calibration" screen will appear, click "Update". The Fujitsu D22" Touch Panel is now calibrated.

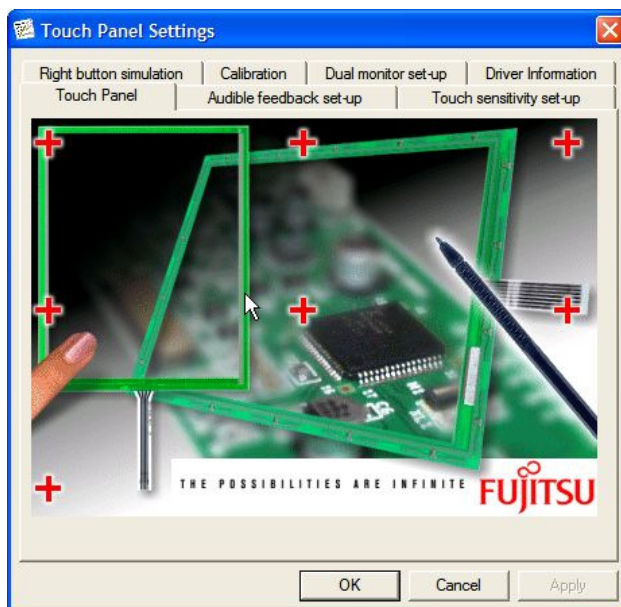
Note: The 9 point calibration is the default calibration and is all that is needed in most applications. A 12 point or 20 point calibration can also be selected.

3.2 Calibrating Dual D22 touch screens

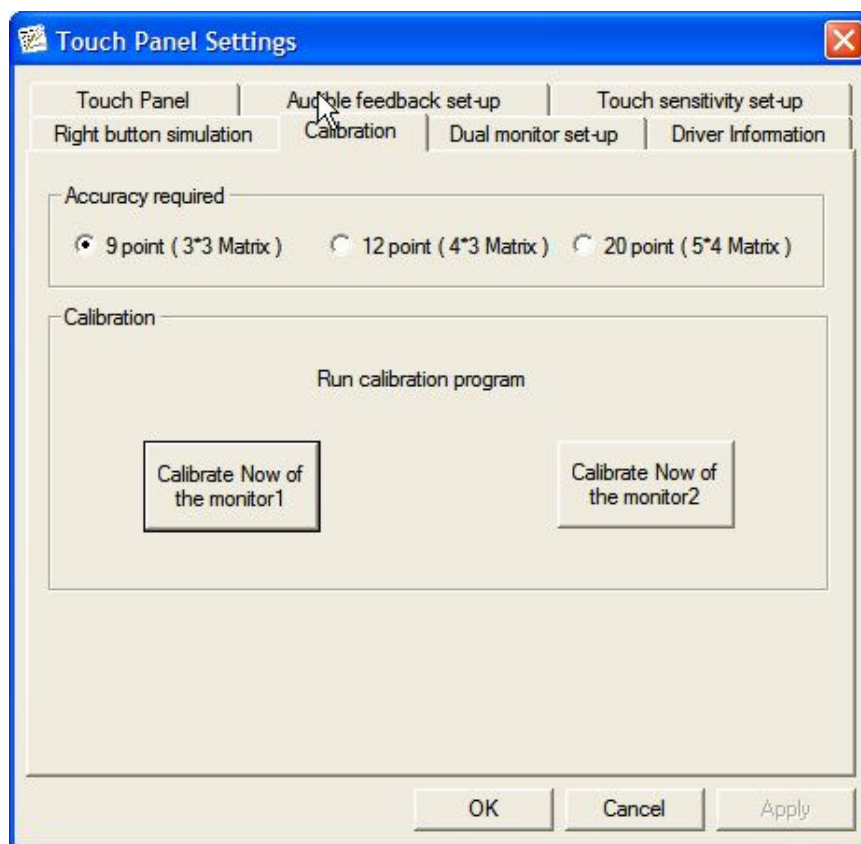
Go to the control panel and verify the Micro Touch icon is displayed



6. Double click on the icon to run the calibration procedure.



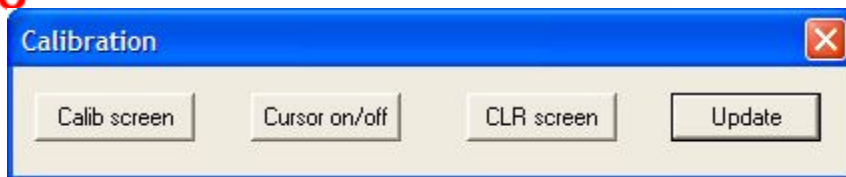
7. Click on the calibration tab.



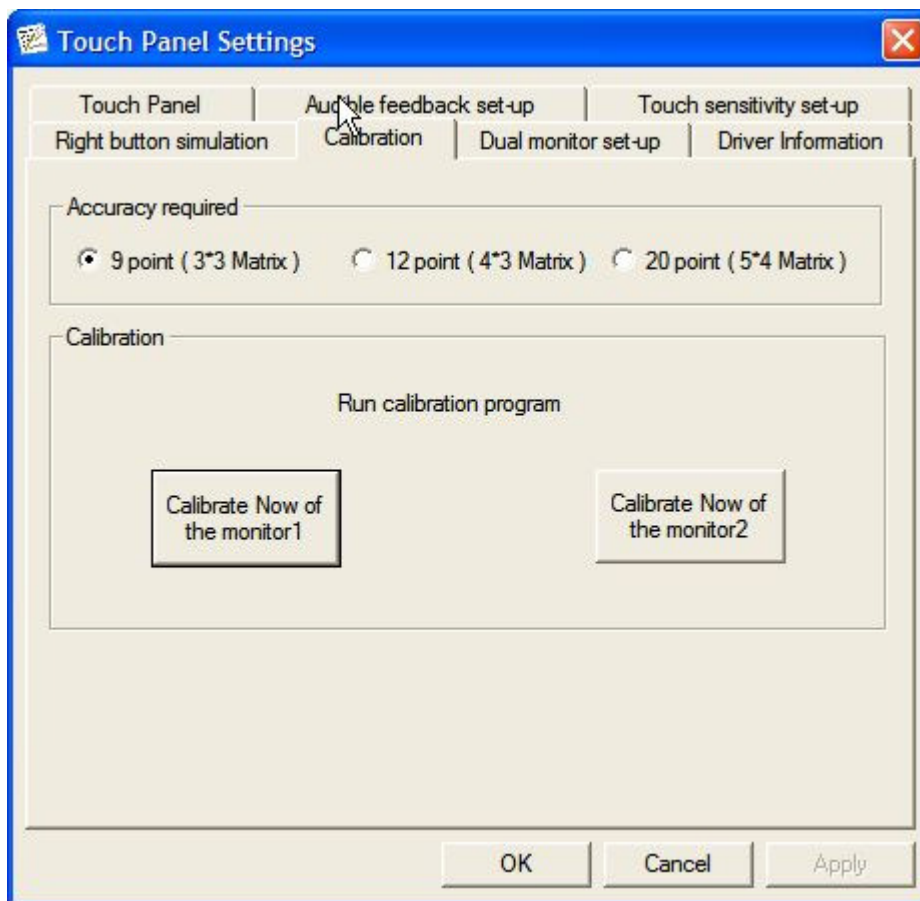
8. Select "Calibrate Now of the monitor1"



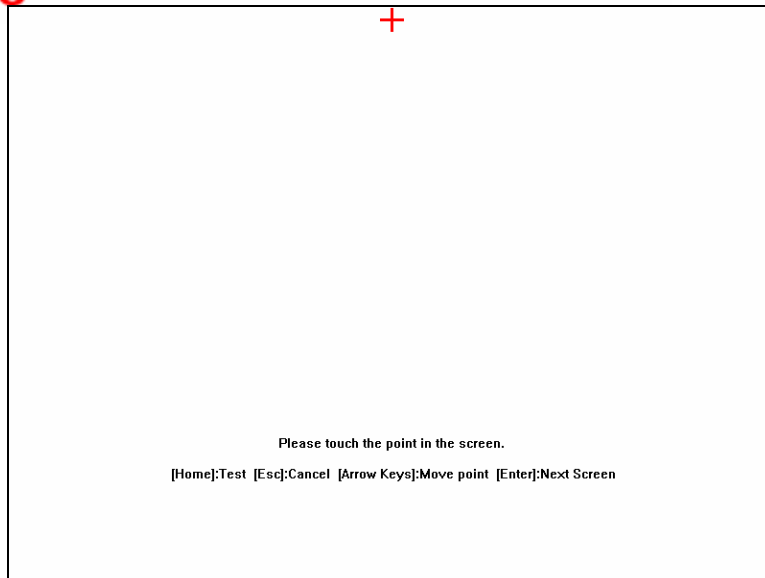
9. Touch the "+" until it turns blue and moves across the screen to the next position. Continue until all the positions have been touched



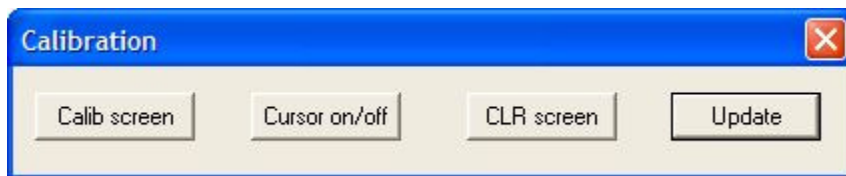
10. When calibration is complete a “Calibration” screen will appear, click “Update”.



11. Select “Calibrate Now of the monitor2”



12. Touch the “+” until it turns blue and moves across the screen to the next position. Continue until all the positions have been touched

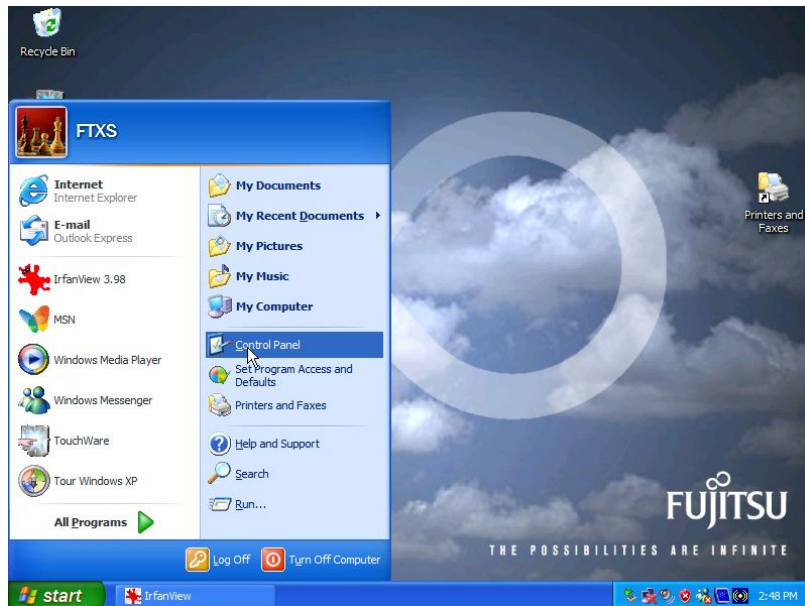


13. When calibration is complete a “Calibration” screen will appear, click “Update”. The calibration of both screens is now complete.]

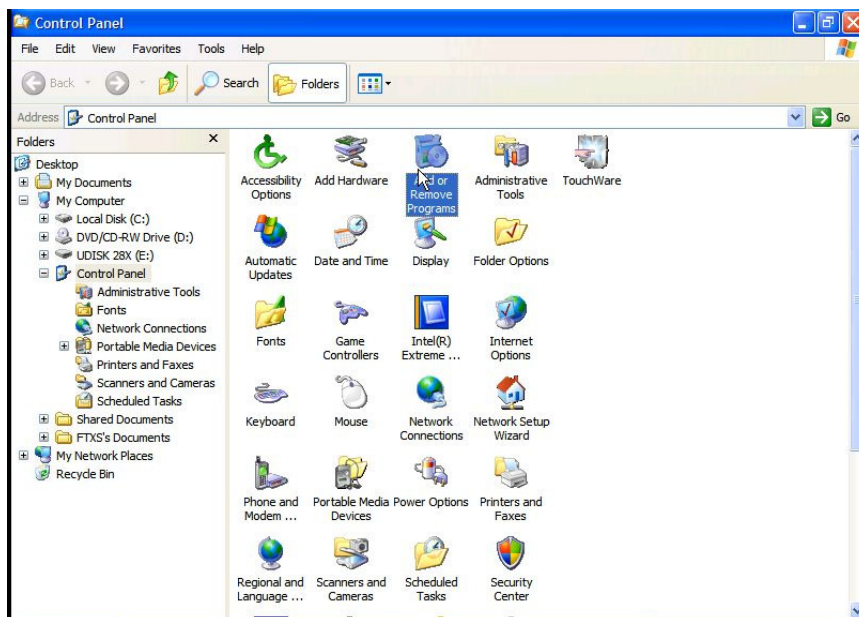
Note: The 9 point calibration is the default calibration and is all that is needed in most applications. A 12 point or 20 point calibration can also be selected.

4. Uninstall D22 Touch Driver

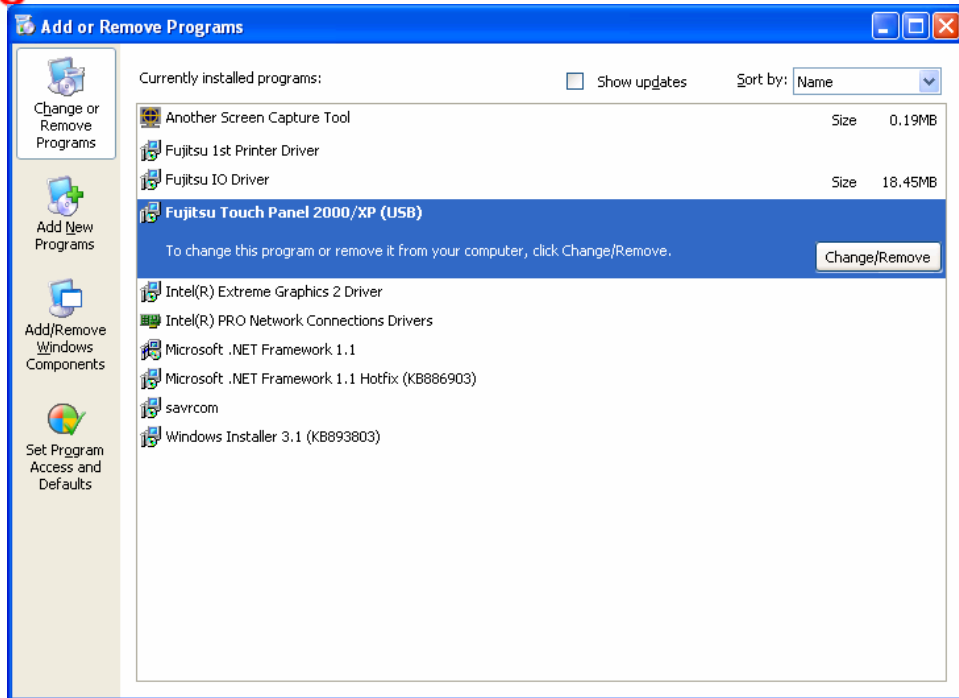
Use “Add or Remove Programs in the “Control Panel” to uninstall the D22 Touch Driver.



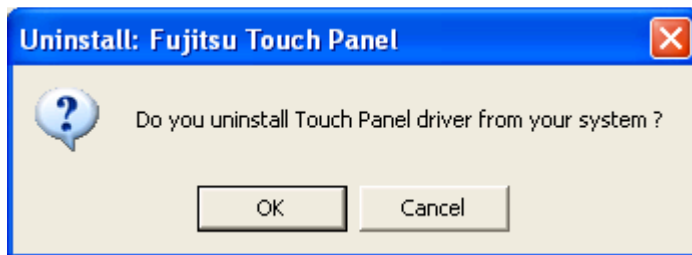
1. Select “*Start*” and then “*Control Panel*”.



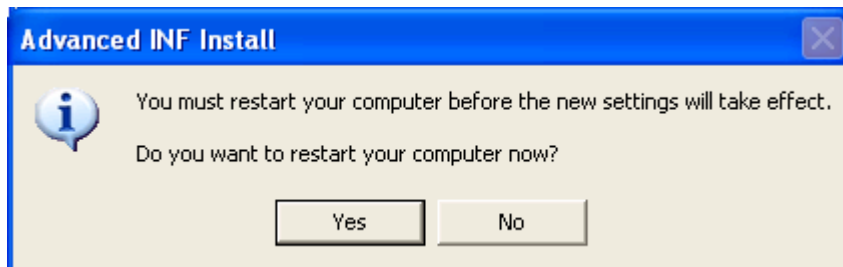
2. Select “*Add or Remove Programs*”.



3. Select "Fujitsu *Touch Panel 2000/XP (USB)*" and then "Remove".



4. Select "OK" in response to the confirmation screen.



5. Select "Yes" to complete uninstall and reboot.