



Retail Platform Software Support



***TeamPoS*® 7000**
Windows® Operating Systems
Device Installation Primer

Issue 1.1
Jan 20, 2012
Status:
Channels: ALL
Author: HRW



***TeamPoS*® 7000**
Windows® Operating Systems
Installation Guide

Copyright © Fujitsu Frontech North America Inc. 2012

This document and the information contained herein are distributed by Fujitsu Frontech North America, Inc. ("Fujitsu") to the recipient for the purpose of facilitating business transactions with Fujitsu. Fujitsu endeavors to ensure that the information in this document is accurate and complete at the time of printing, but does not accept liability for any error or omission.



Table of Contents

Document Revision History	3
1. Overview	4
2. <i>TeamPoS7000</i> Hard Disk Subsystem	4
3. Initial <i>TeamPoS7000</i> Setup	5
4. <i>TeamPoS7000-X00</i> Chipset	5
5. <i>TeamPoS7000-X00</i> Video	6
6. <i>TeamPoS7000-X00</i> Audio	6
7. <i>TeamPoS7000-X00</i> Network Adapter.....	6
8. <i>TeamPoS7000-X00</i> Intel® Active Management Technology	7
9. <i>TeamPoS7000-X00</i> Trusted Platform Module	7
10. <i>TeamPoS7000-X00</i> Touch	8
11. <i>TeamPoS7000-X00</i> Wireless Network Adapter	8
12. <i>TeamPoS7000-X00</i> Base I/O Controller.....	8
13. <i>TeamPoS7000-X00</i> VESA I/O Controller	9



Document Revision History

Revision	Revision History	Author	Date
1.0	Initial Release	hrw	01/19/2012
1.1	Updated for low end terminals	Hrw	01/20/2012



1. Overview

This document addresses the steps necessary to setup the *TeamPoS7000* terminal system devices using a fresh installation of Microsoft Windows® Operating Systems.

TeamPoS7000 mid-end and high-end terminals utilize the IntelQ67 chipset and AMI BIOS HR00T0EA (or later). The specific BIOS version used in *TeamPoS7000-A200* and *A300* will be named in the form of “HRxx”, where xx is the BIOS release level.

TeamPoS7000 low-end terminals utilize the Intel ATOM chipset and AMI BIOS LR00.T0M (or later). The specific BIOS version used in *TeamPoS7000-A100* will be named in the form of “LRxx”, where xx is the BIOS release level.

Out-of-the-box Microsoft Windows® Operating Systems do not include all supporting drivers for these chipsets. Check the following link for driver updates.

<http://www.fujitsu.com/us/services/retailing/support/>

2. *TeamPoS7000* Hard Disk Subsystem

The *TeamPoS7000* hard disk subsystem utilizes up to 2 3.5” Serial ATA (SATA) hard drives (5400 and 7200 RPM). All *TeamPoS7000-x00* terminals incorporates Intel® Matrix Storage Technology providing both Advanced Host Controller Interface (AHCI) and IDE technologies. The *TeamPoS7000-200* and *TeamPoS7000-300* terminals also support RAID 0, 1 and 5 operation modes for improved storage speed and data redundancy.

IDE, AHCI and RAID functionality are “Enabled” in BIOS setting. By default, *TeamPoS7000-100* BIOS will have AHCI enabled and the *TeamPoS7000-200* BIOS and *TeamPoS7000-300* terminals will have RAID enabled facilitating, but not requiring, RAID0, RAID1 or RAID 5 array configurations.

This setting is accessed in the Advanced\SATA Configuration page in BIOS setup.



3. Initial *TeamPoS7000* Setup

Microsoft Windows® 7 release media includes required driver support for *TeamPoS7000-x00* mass storage devices, however for all Windows operating systems an updated Intel drivers will be installed.

In Windows XP Professional, POSReady 2009 and Embedded for POS (WEPOS) this is done using the “F6” method during boot of the OEM Pre-Installation Kit (OPK) media. For Windows 7 Professional, POSReady 7, and Server 2008 this is done after the OPK boot is complete using the “Add Additional Drivers” option.

Note that Windows XP Professional and WEPO requires the drivers to be on a floppy disk drive (USB floppy is supported), POSReady 2009 can use a USB memory stick but needs the files to be located in the root folder. Windows 7 Professional, POSReady 7 and Server 2008 allow the drivers to be browsed to and may be on any media.

For the *TeamPoS7000-200* and *TeamPoS7000-300* systems the driver file package is “10.6_f6flpy-x86” (32 bit) or “10.6_f6flpy-x64” (64 bit). The correct driver is named “Intel(R) Desktop/Workstation/Server Express Chipset SATA RAID Controller”.

For the *TeamPoS7000-100* systems the driver package is “RST_10.0.0.1046_WHQL_RAID_drv_and_GUI”. The correct driver is named “Intel(R) ICH8M-E/M SATA AHCI Controller”.

All base/controller drivers are included in our images. And can be found in the “C:\TeamPoS7000x00_Software_Support\ControlUnit” folders.

At the time the Operating System was generated all drivers were up to date. However, from time to time manufacturers may update their drives. We maintain a set of certified drivers on our support site: www.fujitsu.com/us/services/retailing. Users should check that site to ensure the latest drivers are installed.

4. *TeamPoS7000-X00* Chipset

TeamPoS7000-100 terminals utilize the Intel® ATOM chipset. Install “INF_allOS_9.1.1.1020_PV.exe”.

TeamPoS7000-200 and *TeamPoS7000-300* terminals utilize the Intel® Q67 chipset. Install “INF_allOS_9.2.0.1030.exe” for all Windows Operating systems (32bit and 64 bit).



5. **TeamPoS7000-X00 Video**

The *TeamPoS7000-100* terminals utilize an on-motherboard Intel® VGA driver. Use driver version 14.37.50.4.5260 or Windows XP, POSReady 2009 and WEPOS. For Windows 7 Professional, POSReady 7 and Server 2008 use version 15.12.75.50.7.2230.

The *TeamPoS7000-200* and *TeamPoS7000-300* terminals utilize an on-motherboard Intel® HR Graphics Family Adapter. Use driver version "GFX_WinXP32_14.46.4.5337.exe" for Windows XP, POSReady 2009 and WEPOS. For Windows 7 Professional, POSReady 7 and Server 2008 use version "GFX_Win7_Vista_32_15.22.1.2361".

These drivers require .NET 3.5 before installation.

Since two displays are supported by these drivers no additional adapters are required for the AIO display (operator) and external (customer) displays. After driver installation it should be configured for dual displays, clone mode in 1024x768x32bit color.

6. **TeamPoS7000-X00 Audio**

The *TeamPoS7000-X00* on-motherboard supplied audio is a Realtek ALC269 High Definition audio device.

Use driver version "AUD_XP_5.10.0.6363_PV.exe" for Windows XP, POSReady 2009 and WEPOS. For Windows 7 Professional, POSReady 7 and Server 2008 use version "AUD_Vista_Win7_6.0.1.6363_PV".

7. **TeamPoS7000-X00 Network Adapter**

The *TeamPoS7000-100* terminals contain an on-motherboard Realtek RTL8111E network adapter. Use driver version "PCIE_Install_5790_11182011.zip" for Windows XP, POSReady 2009 and WEPOS. For Windows 7 Professional, POSReady 7 and Server 2008 use version "Install_Win7_7049_11182011.zip".

The *TeamPoS7000-200* and *TeamPoS7000-300* contains an on-motherboard Intel 82579LM network adapter, and enumerates as *Intel 82579LM Gigabit Network Connection*.



Use driver version "PROWinXP_32_v16.2exe" for Windows XP, POSReady 2009 and WEPOS. For Windows 7 Professional, POSReady 7 and Server 2008 use version "PROWin7_32_v16.3".

8. *TeamPoS7000-X00* Intel® Active Management Technology

Only the *TeamPoS7000-200* and *TeamPoS7000-300* terminals support Intel® AMT.

Intel® AMT is comprised of two hardware components exposed to Windows, The Intel Management Engine Interface, and Serial over LAN Interface. To install iAMT drivers use "MEI_allOS_7.1.13.1088.exe" for all Windows operating systems. After installation use device manager to ensure that communications port for "Intel® Active Management Technology – SOL" is configured for COM5.

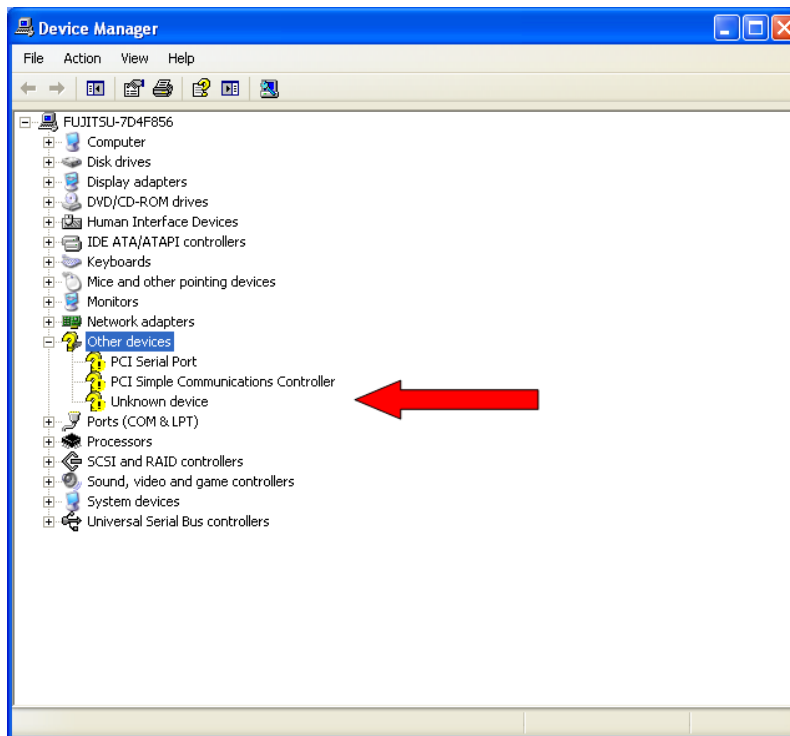
The following pop-up is displayed after installing these components:



9. *TeamPoS7000-X00* Trusted Platform Module

Only the *TeamPoS7000-200* and *TeamPoS7000-300* terminals incorporates the Infineon Trusted Platform Module (TPM).

Device Manager shows the device as "Unknown Device" in the Other Devices category.



To install TPM driver right click on the “Unknown device” and select “Install Driver”. Browse to the “C:\ TeamPoS7000x00_Software_Support\ControlUnit\TPMDriver” and select install. Note that this installs the driver but not the TPM control applications. If that is required install the “TPM_HostSW_3.7_IFX_RTM.zip” package.

10. *TeamPoS7000-X00* Touch

The *TeamPoS7000-X00* terminals utilize an ELO resistive touch screen on both the AIO (operator) display and, optionally, the external (customer) display.

Use driver version “SW601757 TETouch_5.4.1” for all Windows operating systems.

11. *TeamPoS7000-X00* Wireless Network Adapter

The *TeamPoS7000-X00*, optionally, supports an on-motherboard Atheros AR938x Wireless Network Adapter. Use driver package “WLAN.zip” for all Windows operating systems.

12. *TeamPoS7000-X00* Base I/O Controller



The *TeamPoS7000-X00*, optionally, supports an external I/O controller containing two RS232 serial ports and two USB ports. The USB ports are detected and configured automatically by Windows and no additional drivers are required.

The two RS232 serial ports use a Silicon Labs CP210x bridge port. To install the required drivers use “CP210x_VCP_Win_XP_S2K3_Vista_7.exe” for all Windows operating systems.

After installation use device manager to configure the I/O port addresses to COM6 and COM7.

13. *TeamPoS7000-X00* VESA I/O Controller

The *TeamPoS7000-X00*, optionally, supports an external I/O controller containing four RS232 serial ports and one PS2 port. These ports are detected and configured automatically by Windows and no additional drivers are required.

Use device manager to configure the I/O port addresses to COM1 through COM4.