



Retail Platform Software Support



*Team***PoS 3000 VF60 2x20** Installation Instructions

Issue 1.01
April 16, 2010
Status: Release
Channels: ALL
Author: dj



TeamPoS[®] 3000 VF60 2x20 Installation Instructions

Copyright © Fujitsu Frontech North America, Inc. 2010

This document and the information contained herein are distributed by Fujitsu Frontech North America, Inc. ("Fujitsu") to the recipient for the purpose of facilitating business transactions with Fujitsu. Fujitsu endeavors to ensure that the information in this document is accurate and complete at the time of printing, but does not accept liability for any error or omission.



Table Contents

1. Overview	3
2. Install Drivers	4
2.1. Install VCOM Driver (COM46).....	4
2.2. Install the USB Driver.....	8
2.2.1. Files Needed Scenario.....	8
2.2.2. Found New Hardware Scenario.....	10
3. Uninstall Drivers	14



1. Overview

This document guides the installation of the software needed to access the VF60 2x20 display.

For Windows® 7, these instructions will differ from the other versions of Windows. Where needed, a Windows 7 notation will be given.

The process is as follows:

1. Make sure the VF60 is unplugged.
2. Run the "Setup" program in
"c:\TeamPoS3000_Software_Support\Drivers\VFD\VF60\Driver" to load the Virtual COM driver for the VF60 as COM46.
3. Plug in the VF60 and when the "Found New Hardware" prompt is displayed load the device driver located in
"c:\TeamPoS3000_Software_Support\Drivers\VFD\VF60\Driver". This will load the USB driver for the VF60.

2. Install Drivers

Two steps are required to enable the Virtual COM (VCOM) driver for the VF60. The first step is to load the USB driver and the second step is to load the VCOM driver.

2.1. *Install VCOM Driver (COM46)*

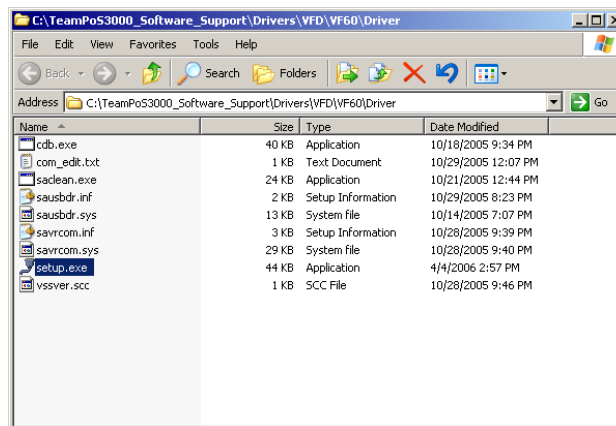


Figure 1

- Locate and start the VF60 “**Setup.exe**” program located on “c:\TeamPoS3000_Software_Support\Drivers\VFD\VF60\Driver”. The program can also be found on the website www.ftxs.fujitsu.com.



Figure 2

- Select “**OK**” to begin loading the software.

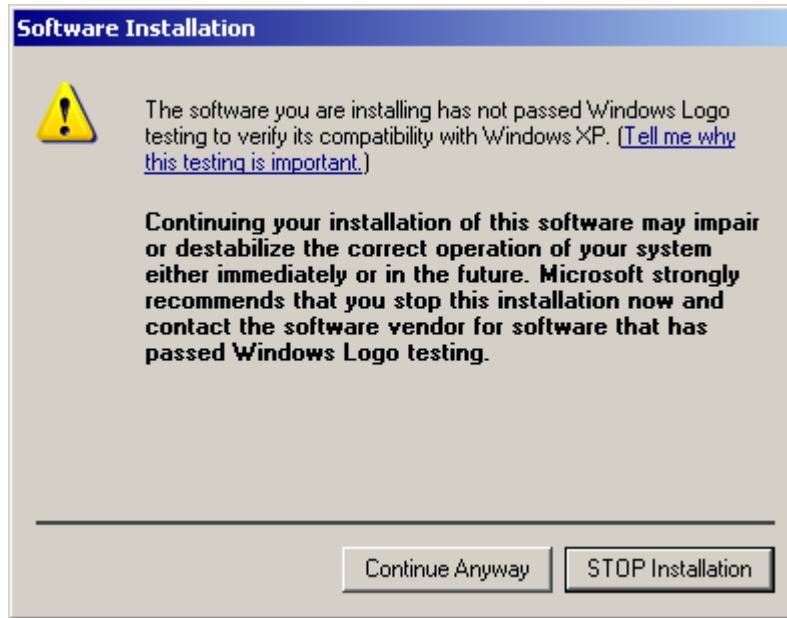


Figure 3

- At the "Software Installation Logo Warning screen", click "Continue Anyway".



Figure 4

- At the "Hardware Installation Logo Warning screen", click "Continue Anyway". There are 3 more such screens to follow.



Figure 5

- Click “Continue Anyway”.



Figure 6

- Click “Continue Anyway”.



Figure 7

- Click “Continue Anyway”.

In Windows 7, you may see the following message. Click the “Install this driver software anyway”.



2.2. *Install the USB Driver*

Plug in the VF60. Either a "Found New Hardware Wizard" or "Files Needed" screen will display. Both situations are covered below.

Windows 7 may complete this step automatically, by searching the folder that was supplied for the driver install before prompting for a search path.

2.2.1. Files Needed Scenario

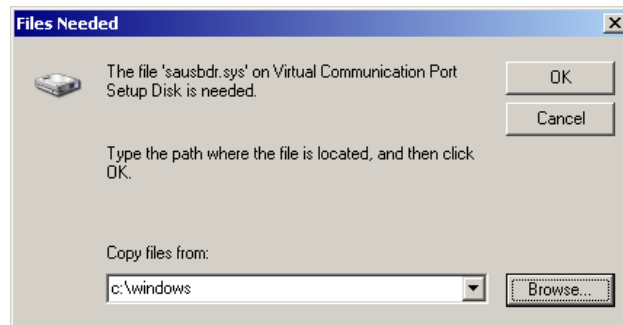


Figure 8

- Click "*Browse*" to navigate to folder "c:\TeamPoS3000_Software_Support\Drivers\VFD\VF60\Driver".

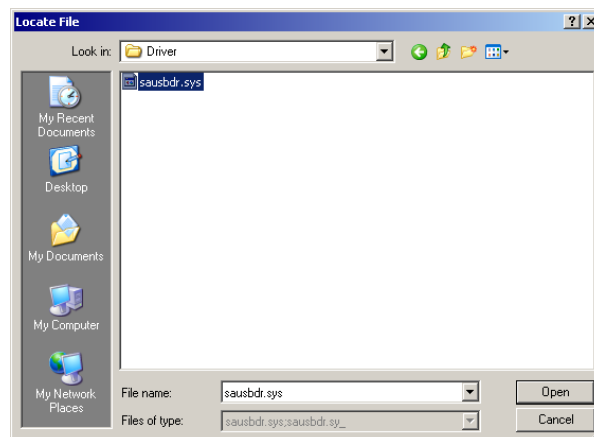


Figure 9

- Select the requested driver file, sausbdr.sys, and click "*Open*".

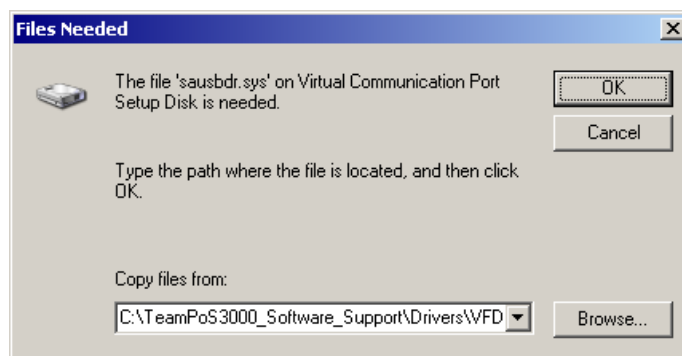


Figure 10

- Click "OK" to continue. Driver installation will complete and exit.

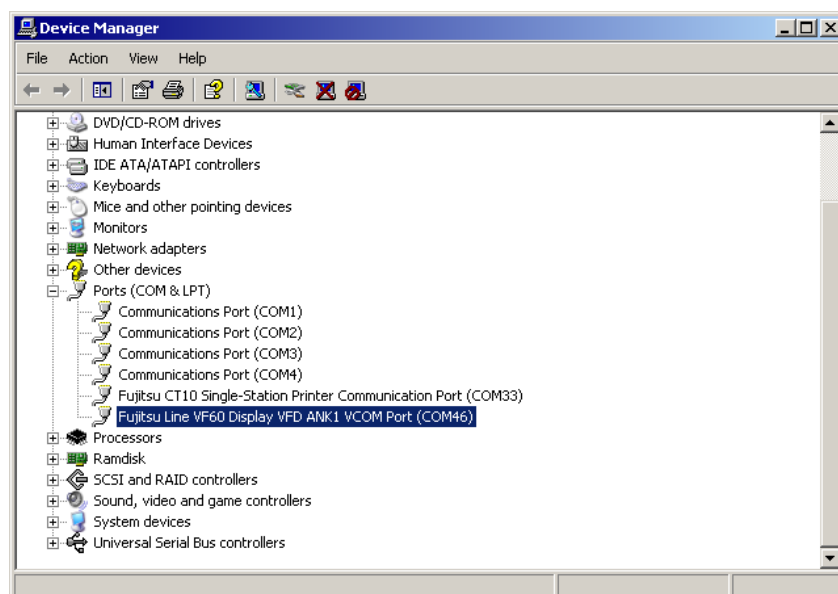


Figure 11

- Confirm proper configuration of VF60 2x20 on COM46 in Device Manager.

2.2.2. Found New Hardware Scenario



Figure 12

- At the Found New Hardware Wizard screen, check "No, not at this time", and click "Next".

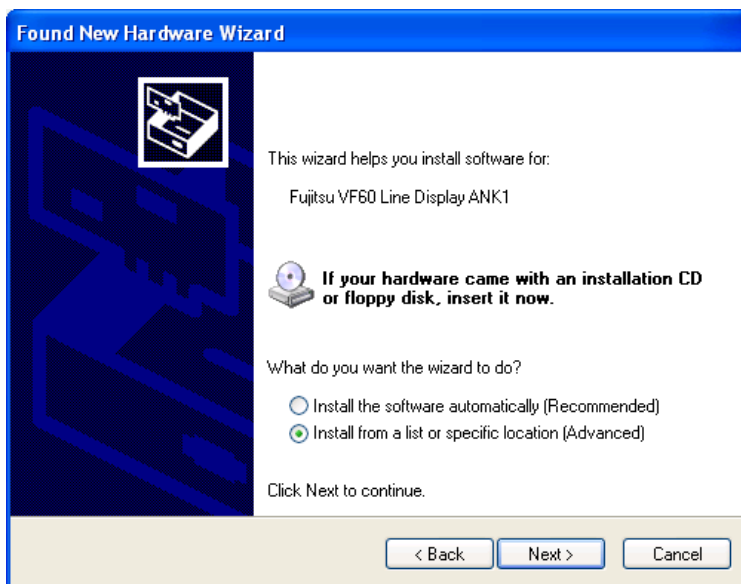


Figure 13

- Check "Install from a list or specific location (Advanced)", and click "Next".

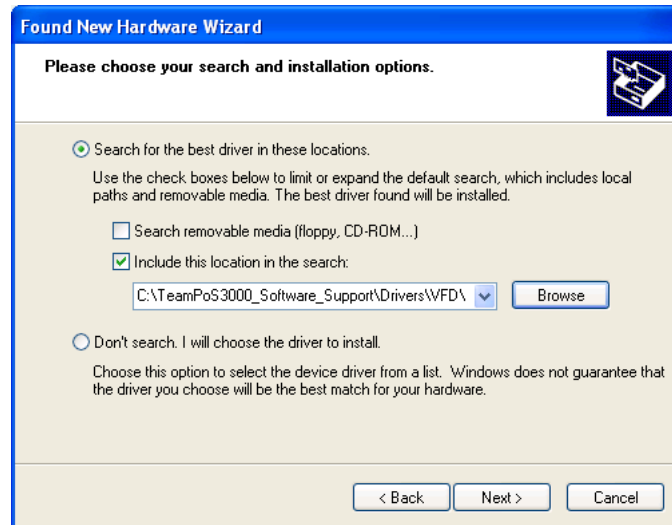


Figure 14

- Check "Search for the best driver in these locations" and "Include this location in the search" and click "Browse".



Figure 15

- Navigate to the folder containing the VF60 drivers and click "OK". In this example the folder is
C:\TeamPoS3000_Software_Support\Drivers\VFD\VF60\Driver.

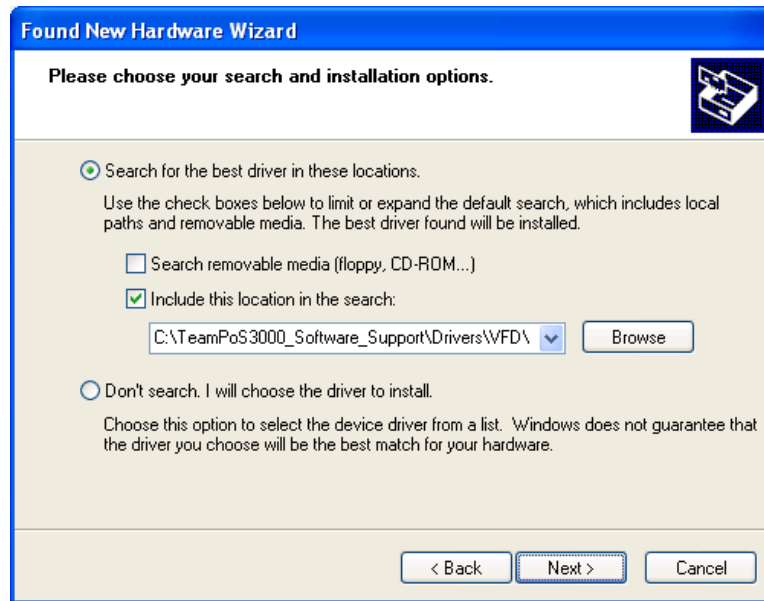


Figure 16

- Click "Next" to continue with setup.

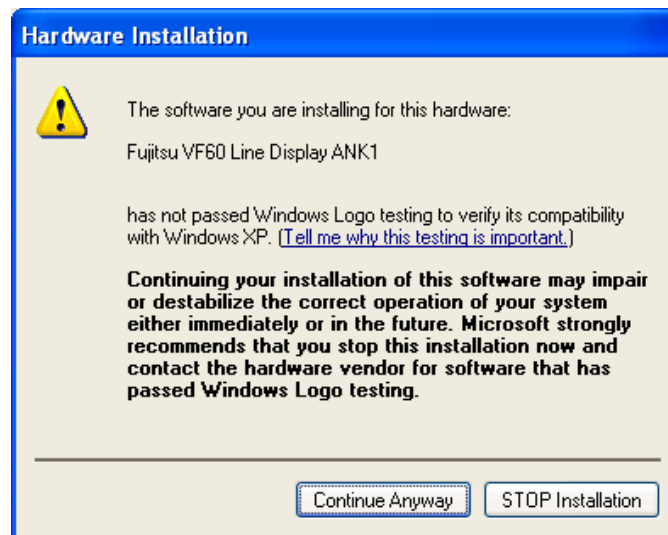


Figure 17

- Click "Continue Anyway" and the Windows Logo warning screen.



Figure 18

- Click "Finish"

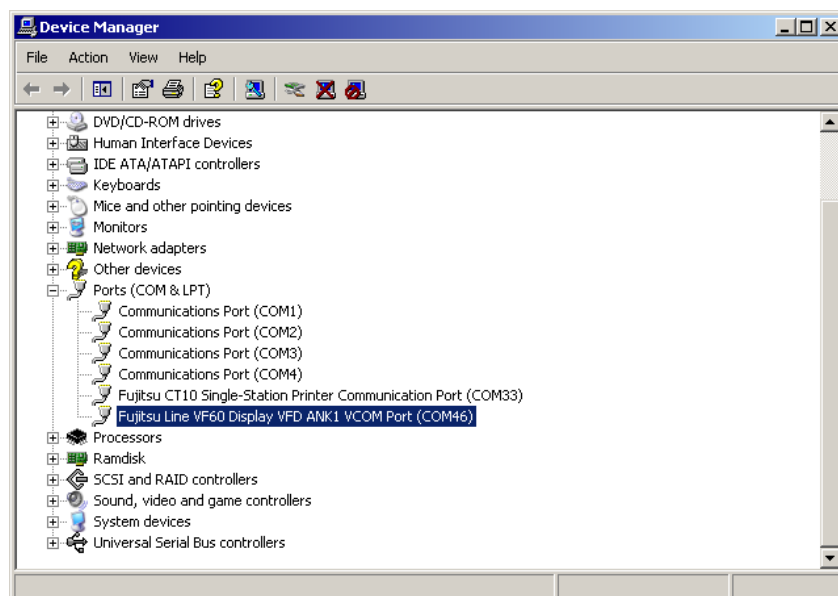



Figure 19

- Confirm proper configuration of VF60 2x20 on COM46 in Device Manager.

3. Uninstall Drivers

To uninstall the VF60 drivers follow the procedure given below. This procedure will uninstall both the VCOM and USB driver components.

- Disconnect the VF60 from the TeamPoS system unit
- Open a command prompt 
- Change Directory to
"c:\TeamPoS3000_Software_Support\Drivers\VFD\VF60\Driver"
- Run **setup -u** from the command line

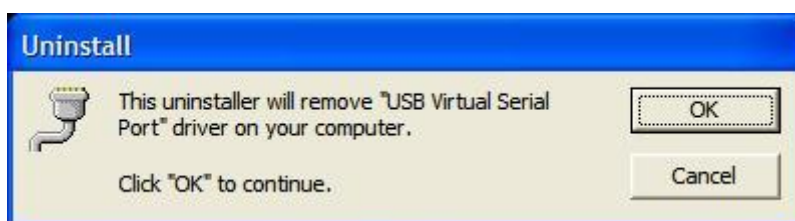


Figure 20

- Select "OK" to begin the Uninstall

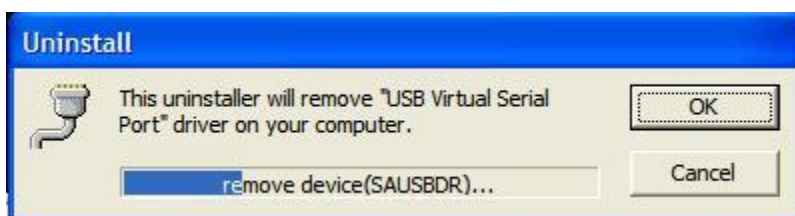


Figure 21

- Wait for the Message Box to be removed – the uninstall is complete