



Product Solutions Group



## ***K110 Keyboard* OPOS Installation Instructions**

*Issue 1.00*  
*May 29, 2010*  
*Status: WIP*  
*Channels: ALL*  
*Author: DJ*



## ***K110 Keyboard* OPOS Installation Instructions**

Copyright © Fujitsu Frontech North America, Inc. 2010

This document and the information contained herein are distributed by Fujitsu Frontech North America Inc. ("Fujitsu") to the recipient for the purpose of facilitating business transactions with Fujitsu. Fujitsu endeavors to ensure that the information in this document is accurate and complete at the time of printing, but does not accept liability for any error or omission.



## Table Contents

1	Overview .....	3
2	Installing the K110 OPOS .....	3
3	Installing Common Controls .....	7
4	Uninstall K110 OPOS.....	8

## 1 Overview

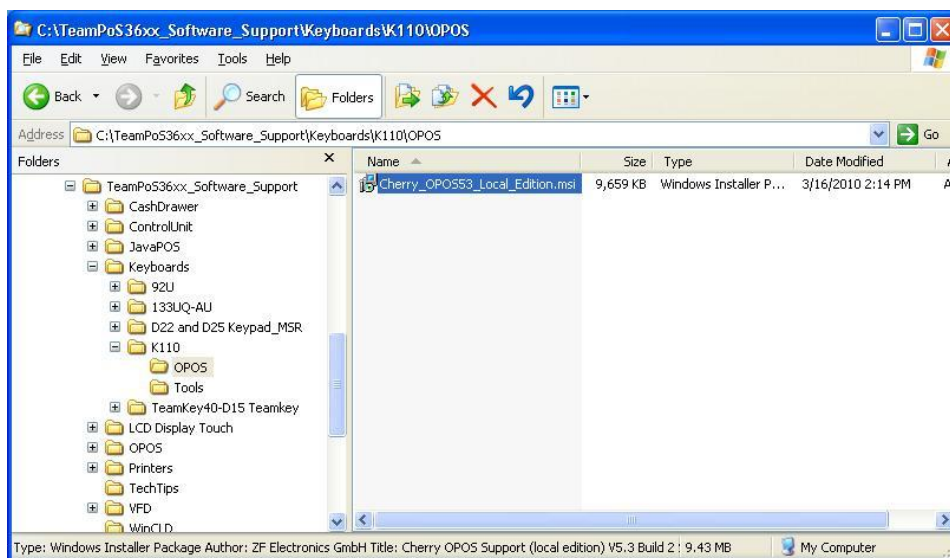
This document guides the installation of the software needed to access the K110 Keyboard - MSR and Tone Generator. It uses a version of the Cherry keyboard software as a sample. To get the latest software validated go to the link below:

<http://www.fujitsu.com/us/services/retailing/support/drivers/teamposdevices/>

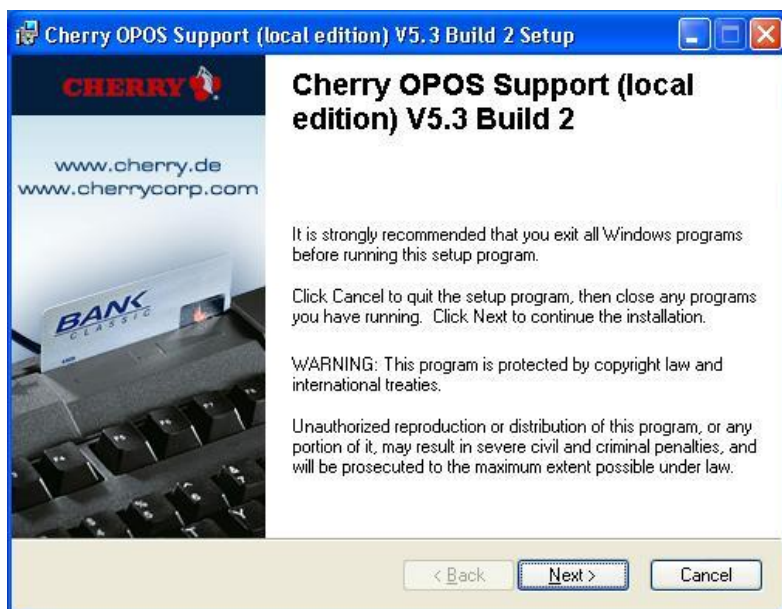
The process is as follows:

1. Connect the K110 keyboard..
2. Run “Cherry\_OPOS53\_Local\_Edition.msi” program to install.
3. Select to not install controls in the Cherry install.
4. Re-start Windows.
5. Install OPOS Common Controls if they are not already loaded.

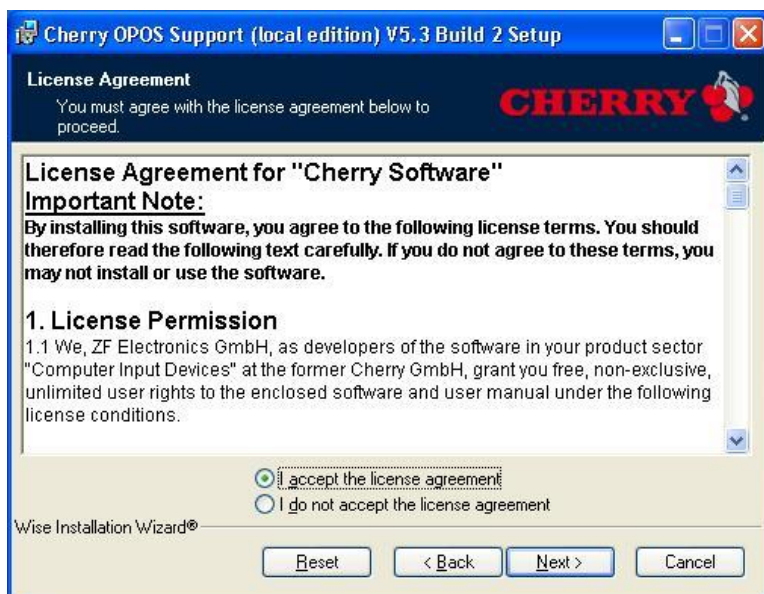
## 2 Installing the K110 OPOS



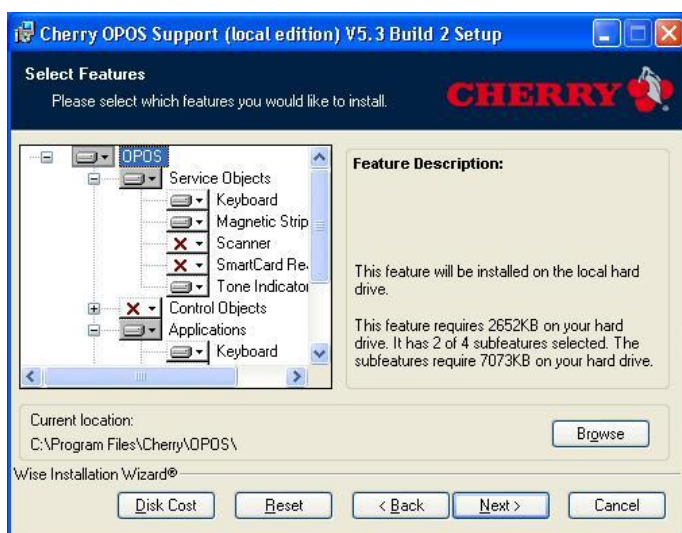
1. Navigate to the folder “C:\TeamPoS36xx\_Software\_Support\Keyboards\K110\OPOS” and run the install “Cherry\_OPOS53\_Local\_Edition.msi”.



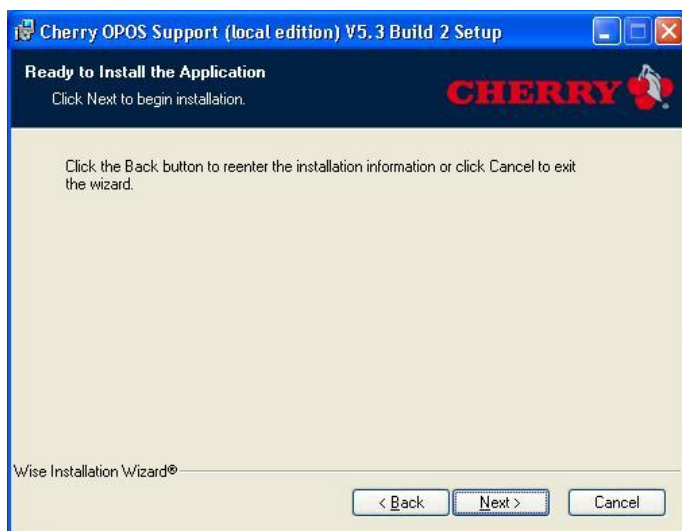
2. Select "Next"



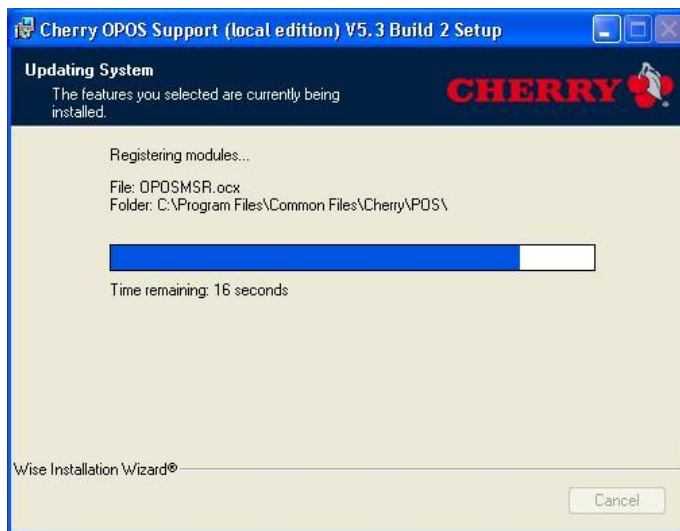
3. Select "I accept the terms in the License Agreement" and then "Next".



4. Deselect “Common Controls”, the “Scanner”, and the “Smart Card Reader”, but select “Applications” to install the Cherry test programs then select “Next”.



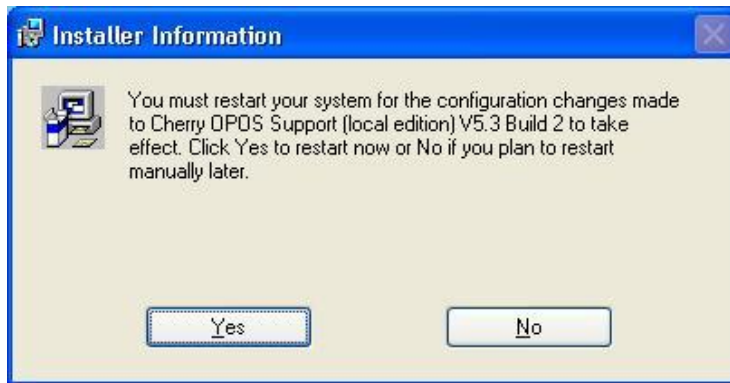
5. Select “Next”.



You will get a progress bar.



6. Select "Finish".



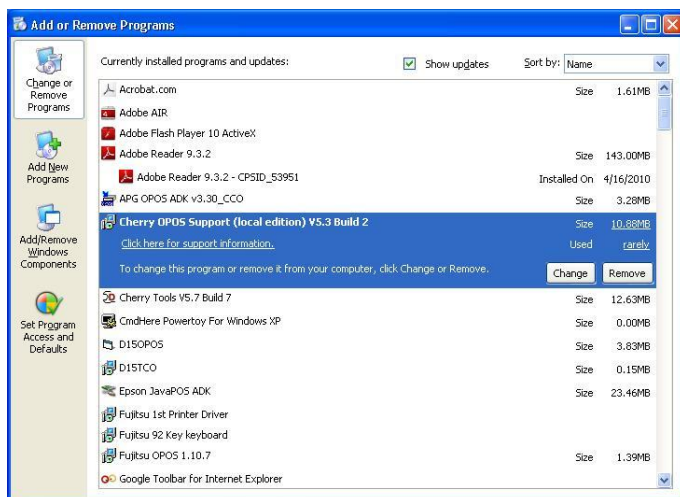
7. You will be asked to restart Windows. Select "Yes"
8. You can test the MSR and Tone with the Cherry test utilities: Start -> All Programs -> Cherry OPOS.

### 3 Installing Common Controls

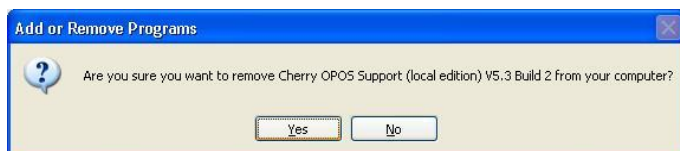
The Common Controls only need to be loaded once. If you have already loaded the Common Controls the installation is complete. Use the document "Loading TP3000 OPOS" located in "\TeamPoS3000\_Software\_Support\Drivers\OPOS\Common Controls" or on the FTXS web site at <http://monroeecs.com/opos.htm>.

## 4 Uninstall K110 OPOS

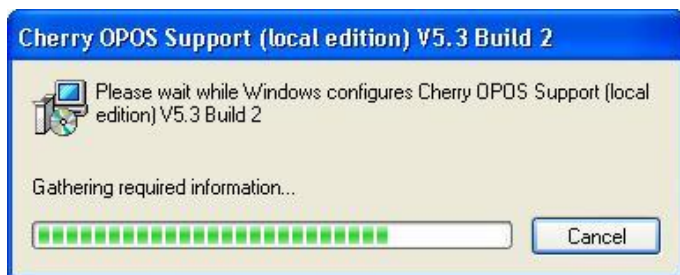
Use “Add or Remove Programs” in the “Control Panel” to remove the Cherry OPOS.



1. Select “Cherry OPOS Support ...” and then “Remove”.

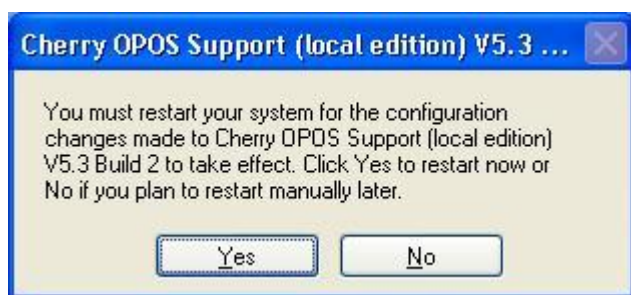


2. Select “Yes”.



3. You will get a progress bar.





4. You will be asked to restart Windows. Select "Yes"