



Product Solutions Group



***K110 Keyboard* JavaPOS Installation Instructions**

Issue 1.00
May 29, 2010
Status: WIP
Channels: ALL
Author: DJ



***K110 Keyboard* JavaPOS Installation Instructions**

Copyright © Fujitsu Frontech North America, Inc. 2010

This document and the information contained herein are distributed by Fujitsu Frontech North America Inc. ("Fujitsu") to the recipient for the purpose of facilitating business transactions with Fujitsu. Fujitsu endeavors to ensure that the information in this document is accurate and complete at the time of printing, but does not accept liability for any error or omission.



Table Contents

1	Overview	3
2	Installing K110 JavaPOS	3
3	Uninstall K110 JavaPOS.....	8

1 Overview

This document guides the installation of the software needed to access the K110 Keyboard - MSR and Tone Generator. It uses a version of the Cherry keyboard software as a sample. To get the latest software validated go to the link below:

<http://www.fujitsu.com/us/services/retailing/support/drivers/teamposdevices/>

The process is as follows:

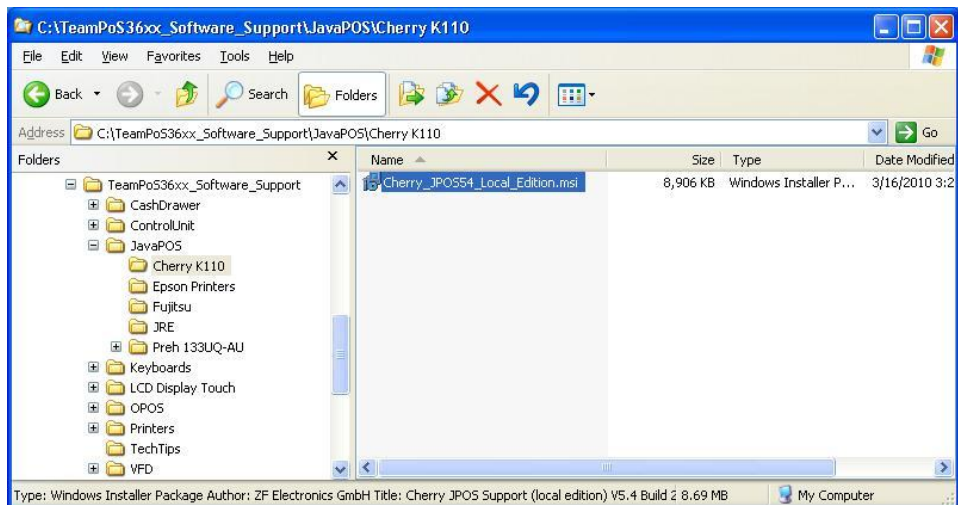
1. Connect the K110 keyboard.
2. Run “Cherry_JavaPOS54_Local_Edition.msi” program to install.
3. Re-start Windows.

2 Installing K110 JavaPOS

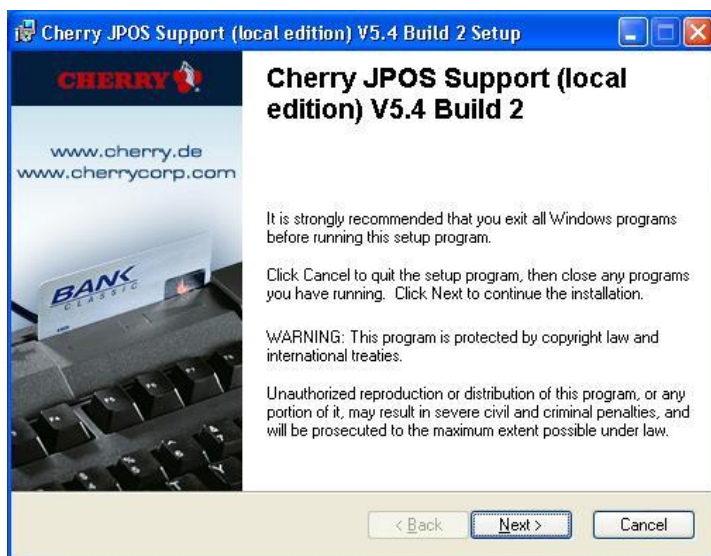
A Java Runtime Environment (JRE) needs to be installed before the K110JavaPOS devices will work.

This install will place the following components in the paths indicated below.

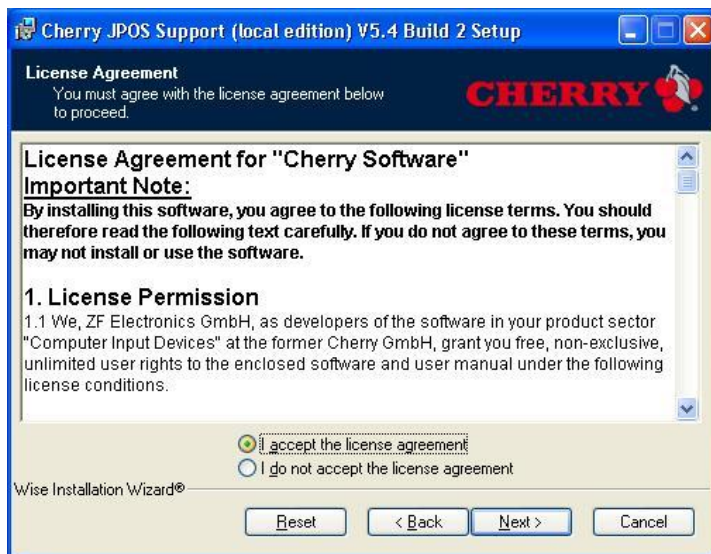
Install path:	C:\Program Files\Cherry\JPOS
Jpos.xml file:	C:\Program Files\Cherry\JPOS
Jar and lib files:	C:\Program Files\ Cherry \JPOS
Test Program:	C:\Program Files\ Cherry \JPOS\POSTest.v10.bat



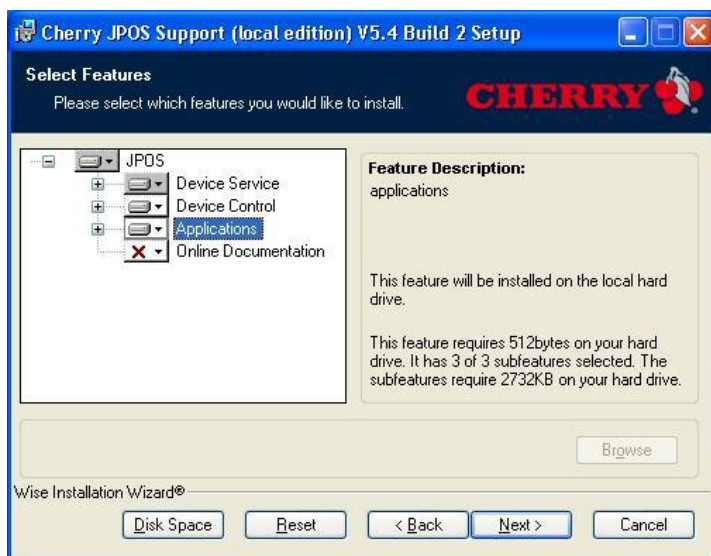
1. Navigate to the folder “C:\TeamPoS36xx_Software_Support \JavaPOS\Cherry K110” and run the install “Cherry_JavaPOS54_Local_Edition.msi”.



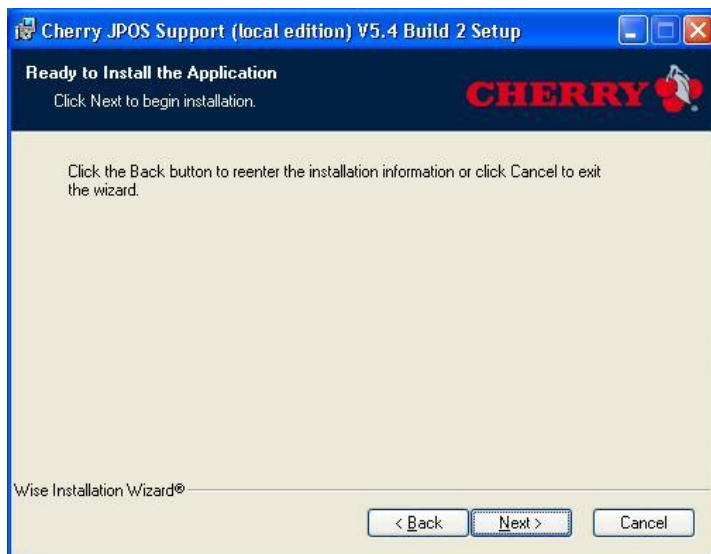
2. Select “Next”



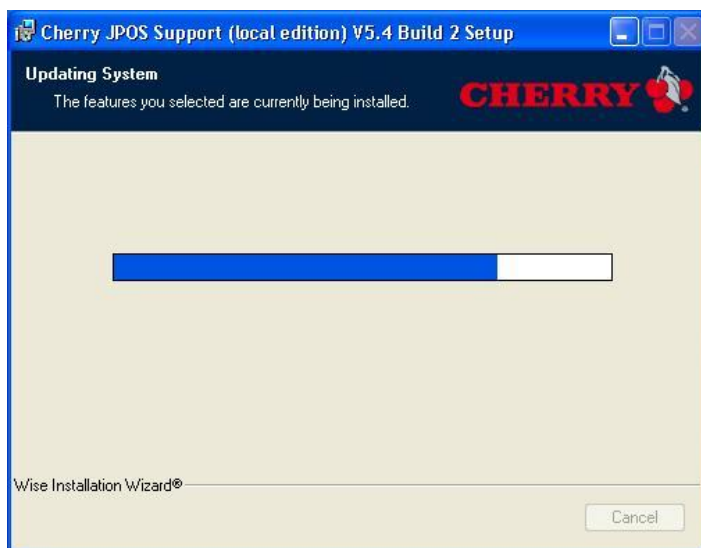
3. Select “I accept the terms in the License Agreement” and then “Next”.



4. Select “Applications” to install the Cherry test programs then select “Next”.



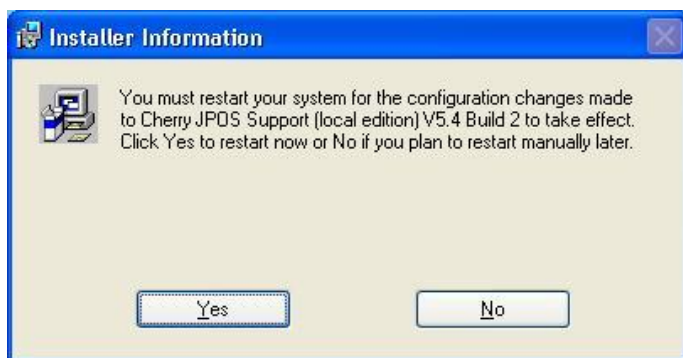
5. Select “Next”.



You will get a progress bar.



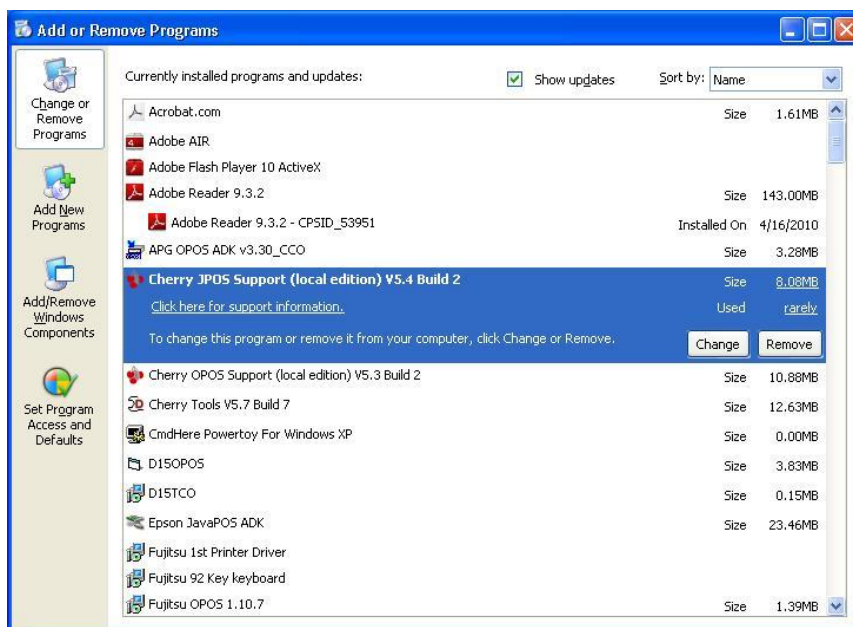
6. Select "Finish".



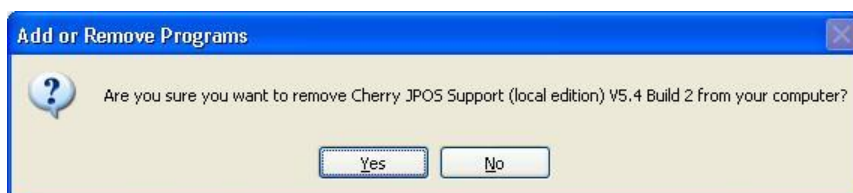
7. You will be asked to restart Windows. Select "Yes"
8. You can test the MSR and Tone with the Cherry test utilities: Start -> All Programs -> Cherry JavaPOS. The POSTest application is used for testing.

3 Uninstall K110 JavaPOS

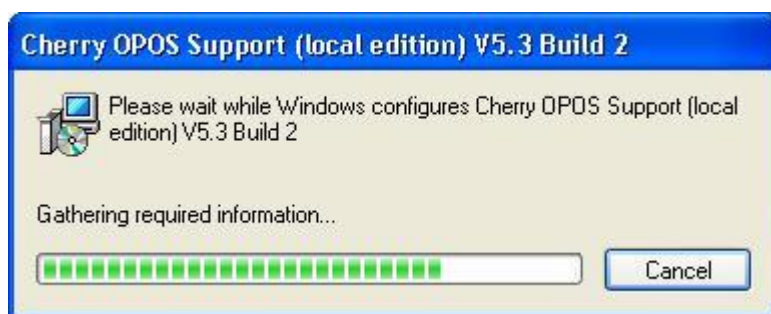
Use “Add or Remove Programs” in the “Control Panel” to remove the Cherry JavaPOS.



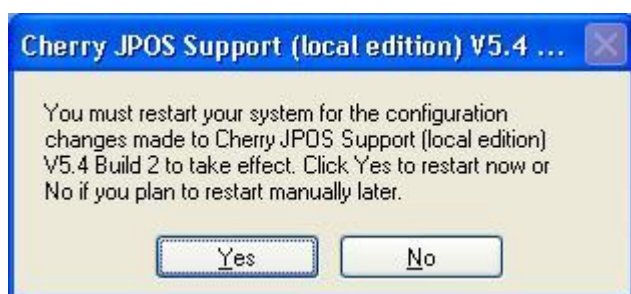
1. Select “Cherry JavaPOS Support ...” and then “Remove”.



2. Select “Yes”.



3. You will get a progress bar.



4. You will be asked to restart Windows. Select "Yes"