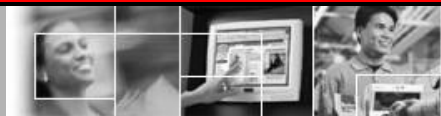




Retail Platform Software Support



***TeamPoS 3000®* D22/D25 Keypad with MSR
Installation Instructions**

*Issue 1.10
May 1, 2010
Status: Release
Channels: ALL
Author: dj*



***TeamPoS3000®*
D22/D25 Keypad with MSR
Installation Instructions**

Copyright © Fujitsu Frontech North America, Inc. 2010

This document and the information contained herein are distributed by Fujitsu Frontech North America, Inc. ("Fujitsu") to the recipient for the purpose of facilitating business transactions with Fujitsu. Fujitsu endeavors to ensure that the information in this document is accurate and complete at the time of printing, but does not accept liability for any error or omission.



Table of Contents

1. Overview	3
2. Installing D22/D25 MSR and Key Lock Driver.....	4
3. Uninstalling D22/D25 MSR and Key Lock Driver	7



1. Overview

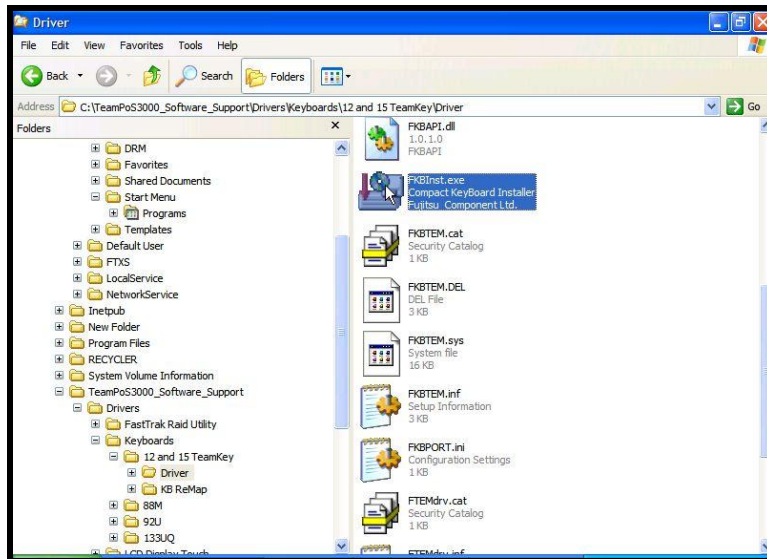
This document guides the installation of the software needed to access the D22/D25 Keypad and MSR. A standard USB cable (not the powered USB cable used for the touch screen) must be connected from the D22 or D25 with attached keyboard, MSR, and key lock to the TP3000.

For Windows® 7, these instructions will differ from the other versions of Windows. Where needed, a Windows 7 notation will be given.

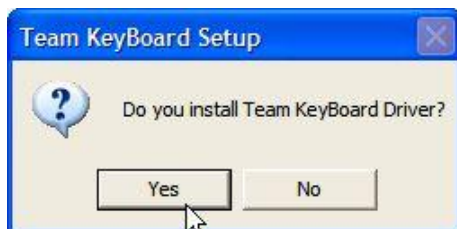
The process is as follows:

1. With the TP3000 powered on and Windows XP running, plug in the USB cable from the D22/D25 Keypad and MSR. (Standard USB cable).
2. When "Found New Hardware Wizard" appears on the display cancel the pop-up. One message will appear for both the MSR and Key Lock.
3. Run the FKBIInst.exe program for the D22/D25 Keypad and MSR.

2. Installing D22/D25 MSR and Key Lock Driver



1. Navigate to the folder
“C:\TeamPoS3000_Software_Support\Drivers\Keyboards\D22 and D25
Keypad_MSR” and start FKBIInst.exe.



2. Select “Yes”



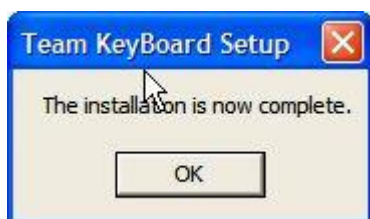
3. Select “Continue Anyway”.



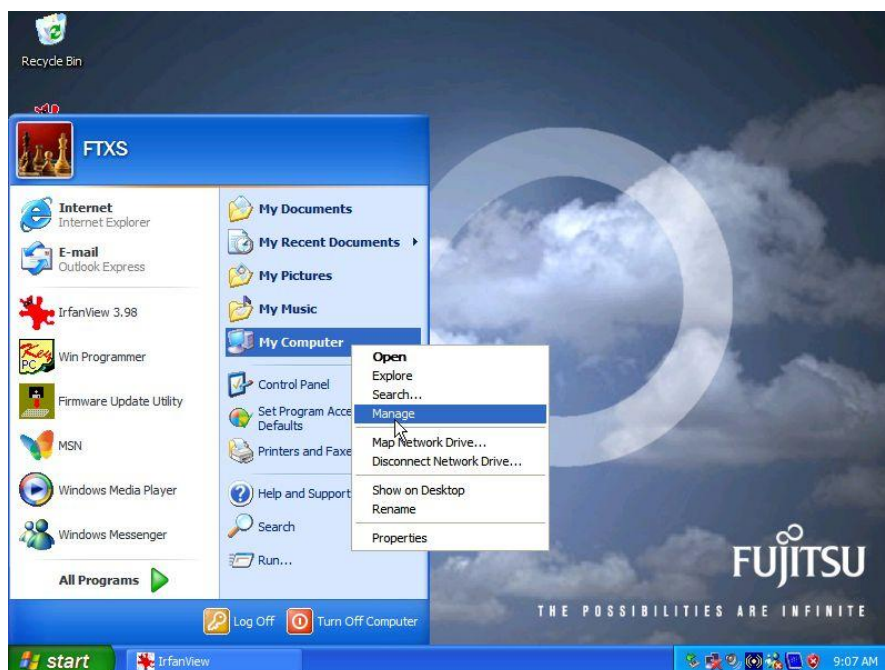
In Windows 7, you may see the following message. Click the “Install this driver software anyway”.



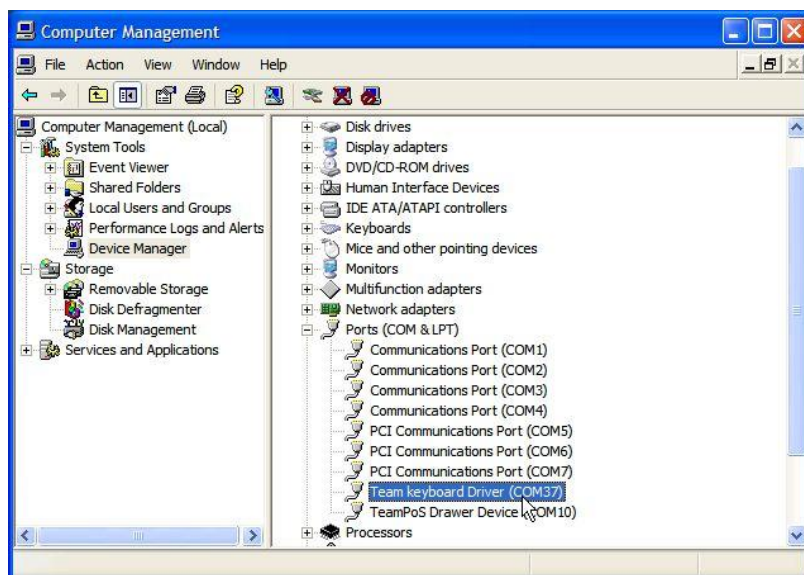
4. Select “Continue Anyway”.



5. Select “OK”.



6. Select “Start” then Right Click on “My Computer” and then select “Manage”.



7. Select “Device Manager” and then “Ports (COM & LPT)” to confirm the “Team Keyboard Driver (COM37)” is defined.

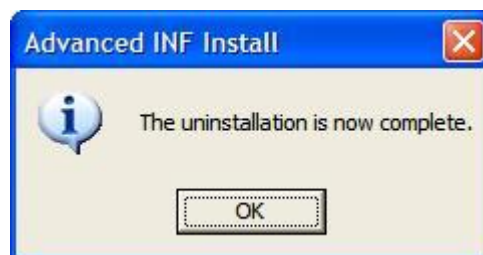
3. Uninstalling D22/D25 MSR and Key Lock Driver

Use the following procedure to uninstall the D22/25 MSR and Key Lock drivers.

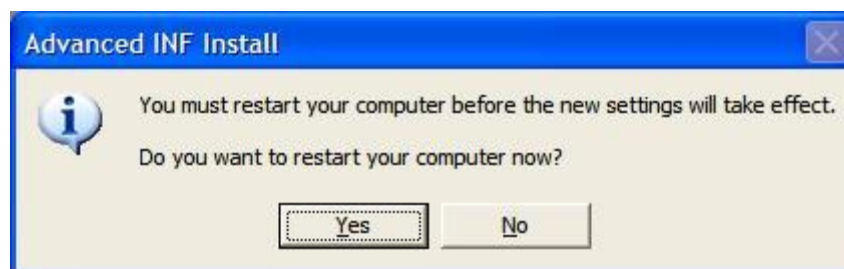
1. Navigate to the folder
“C:\TeamPoS3000_Software_Support\Drivers\Keyboards\D22 and D25 Keypad_MSR” for the *TeamPoS3000* XL and “C:\TeamPoS3000-XT_Software_Support\Drivers\Keyboards\D22 and D25 Keypad_MSR” for the *TeamPoS3000* XT and start **FKUinst.exe**.



2. Select “OK” to start the uninstall process.



3. Select “OK” to complete the uninstall process.
4. Disconnect the Keyboard’s USB cable from the TeamPoS unit.



5. Select “Yes” to restart Windows.