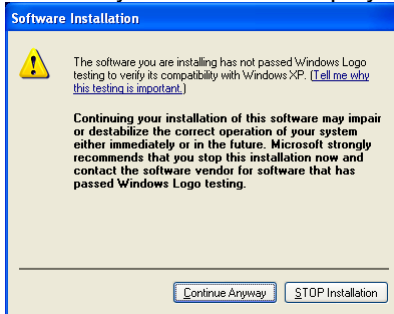


## Preh Firmware Update Utility – Step 1: Installing the application:

Eventually Windows will display the following warning during the installation process:



Please go on by pressing *Continue Anyway*.

## Preh Firmware Update Utility – Step 2: Driver Installation for MCI Firmware 605/3xxx:

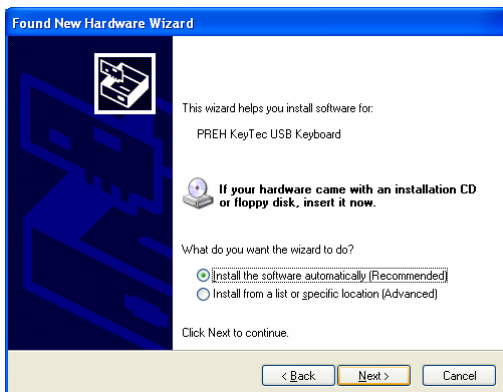
In order to update the firmware on keyboards having firmware 605/3xxx, you have to install a special hardware driver. This Step has to be done only once for each USB port.

Windows will pop up the *Found New Hardware Wizard*.

Please follow the instructions as described below:



Please select *No, not this time* and then *Next*.



Please select *Install the software automatically* and press *Next*.



If the above warning is displayed, please go on pressing *Continue Anyway*.



Press *Finish* to complete driver installation.

preh-keytec/2073/051201