

About This Manual

A Trap List Overview

This section explains how to read the trap list table and the screen display examples.

B Trap List

This section explains the trap list according to its various classifications.

■ Trademarks

Microsoft, Windows, MS, Windows Server are registered trademarks of the Microsoft Corporation in the USA and other countries.

Intel and Pentium are registered trademarks or trademarks of Intel Corporation or its subsidiaries in the USA and other countries.

Linux is a trademark or registered trademark of Linus Torvalds in the USA and other countries.

All other hardware and software names used are trademarks or registered trademarks of their respective manufacturers. Other product names are copyrights of their respective manufacturers.

All Rights Reserved, Copyright© FUJITSU LIMITED 2008

Contents

A Trap List Overview	3
A.1 Notes	3
A.2 How to Read the Trap List	3
A.3 Screen Display Examples	4
B Trap List	8
B.1 SNI-TRAP-MIB (trap.mib)	8
B.2 SNI-SERVER-CONTROL-MIB (sc.mib)	11
B.3 SNI-SERVERVIEW-MIB (serverview.mib)	19
B.4 SNI-HD-MIB (hd.mib)	20
B.5 SERVERVIEW-STATUS-MIB (status.mib)	20
B.6 FSC-SERVERCONTROL2-MIB (sc2.mib)	21
B.7 FSC-THRESHOLD-REPORT-MIB (Threshold.mib)	28
B.8 FSC-RAID-MIB (raid.mib)	28
B.9 SIEMENS-MULTIPATH-MIB (mp.mib)	28
B.10 SERVERVIEW-DUPLEXDATAMANAGER-MIB (ddm.mib)	29
B.11 SNI-MYLEX-MIB (mylex.mib)	30
B.12 BLADE-MIB (S31.mib)	34
B.13 AdaptecArrayController-MIB (aac.mib)	37
B.14 IOMMIB (iommb.mib)	41
B.15 DPT-SCSI-MIB (dptscsi.mib)	42
B.16 MYLEXRAID-MIB (Mlxraid.mib)	44
B.17 MYLEXRAID-FJ-MIB (Mlxraidfj.mib)	44
B.18 FASTTRAK-MIB (promisev1.mib)	45
B.19 PROMISE-UNIFIED-MIB (promiseraid.mib)	46
B.20 SW-MIB (fcswitch.mib)	49
B.21 INTEL-WFM-MIB (WFM.mib)	49
B.22 UPSMAN (Upsman.mib)	49
B.23 UPS-MIB (RFC1628.mib)	51
B.24 PowerNet-MIB (powernet.mib)	51
B.25 ROMPILOT-MIB (ROMPILOT.MIB)	73
B.26 RFC1157 (rfc1157.mib)	74
B.27 NET-SNMP-MIB (net-snmp.mib)	75
B.28 FUJITSU-SERVERVISOR-MIB (Servervi.mib)	75
B.29 Alert-Definition-Originator-MIB (F5emt2o.mib)	76
B.30 LDSM-MIB (ldsm.mib)	76
B.31 LDCM-MIB (Ldcm.mib)	77
B.32 ADAPTECDURALINK-MIB (duralink.mib)	77

A Trap List Overview

This section explains an overview of SNMP traps which the ServerView Alarm Monitor displays, and how to read the trap lists in this manual.

A.1 Notes

- In this manual, traps shown as "Not supported" or traps not listed are unsupported. (Including traps not shown as UNKNOWN and traps shown in the class "4" and "5" alarm list in "A.2 How to Read the Trap List" (→pg.3)).
- Because the Agents of I/O component traps vary, they are supplied by the various vendors. Depending on the version of the Agents, message content may change. Refer to the manual provided with the server for details about messages.
- When "ENTERPRISE OID" is a version other than "enterprises.231" the contact representative will vary depending on the vendor it is supplied by.

A.2 How to Read the Trap List

The displayed content of trap messages is classed in the following way.

1. Pop up messages
2. OS event logs
3. Alarm list
4. Alarm list of Assign Alarms on the [Alarm Configuration] window
5. MIB file Help alarm list alarm type

The trap list entries are displayed in the following way.

Table: Explanation of the trap list content

TRAP-TYPE/ Alarm type	Specific	Severity	Detailed Messages (%d: optional number %s: system variable)	Remarks
[Upper side]*1 [Lower side]*2	*3	*4	*5	*6

*1 : Name of the trap.
Corresponding to "5. MIB file Help alarm list alarm type".

*2 : Name of the trap.
Corresponding to "3. Alarm list" and "4. Alarm list of Assign Alarms on the [Alarm Configuration] window".

*3 : List number of the trap.

*4 : Level of importance (error class) of the trap.

Importance level displayed by the trap list	Importance level when log is done by OS		Interpretation concerning Importance level
	Windows	Linux	
INFORMATIONAL	Information	information	Notification of information
MINOR	Warning	warning	Warning
MAJOR	Error	error message	Error
CRITICAL	Error	critical message	Error

*5 : The content displayed by "1. Pop up messages" and "2. OS event logs" is described.
 In the log stored by Alarm Monitor, the following messages are added to the head of a detailed message.
 ServerView received the following alarm from server [Model name of server]:detailed message

Example of displaying syslog in Linux:

```
FSC ServerView Services[6964]:(critical message) ServerView received the following alarm from server TX150S5:
1      2      3      4
Fan 'FAN PSU' failed in cabinet 0 of server 'TX150S5'
5
```

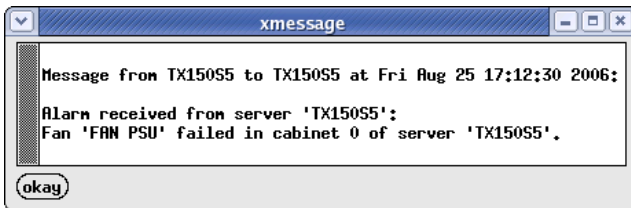
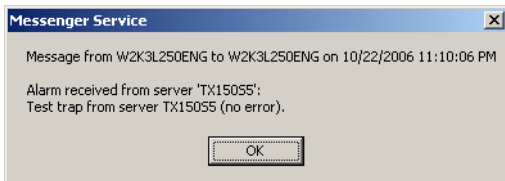
- 1: Decided message (= FSC ServerView Services)
It is shown that Alarm Monitor outputs the logs.
- 2: Importance level
- 3: Decided message (= ServerView received the following alarm from server)
It is shown to have received the message from the alarm sending origin.
- 4: Host name of alarm sending origin
- 5: Detailed message

*6 : Detailed explanation to the trap or an explanation of the action method to the trap.

A.3 Screen Display Examples

The screen display examples are as follows.

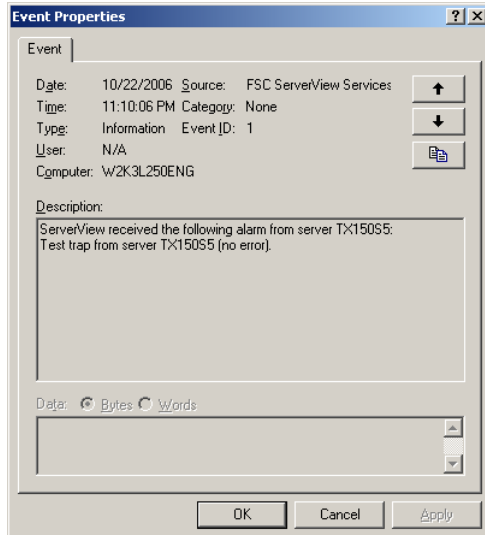
- **Popup**



- **OS event log / syslog**

- For Windows

The source is an event log of "Fujitsu ServerView Services". The example of the event log is shown as follows.

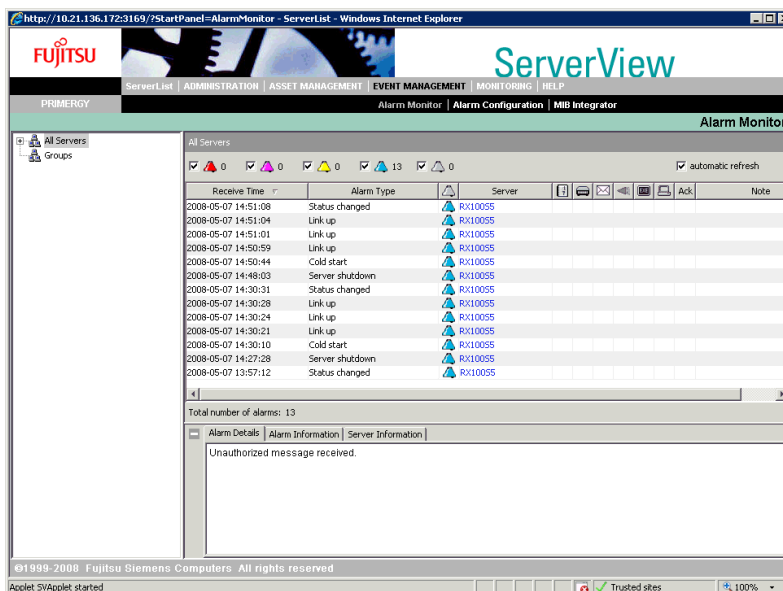


- For Linux

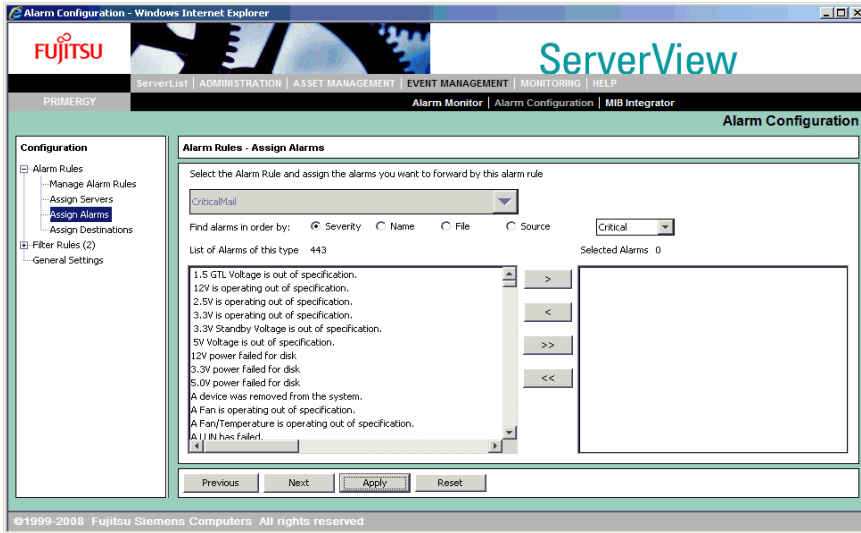
The syslog begins with "FSC ServerView Services". The example of the syslog is shown as follows.

```
FSC ServerView Services[6964]: (critical message) ServerView received the
following alarm from server TX150S5: Fan 'FAN PSU' failed in cabinet 0 of
server 'TX150S5'.
```

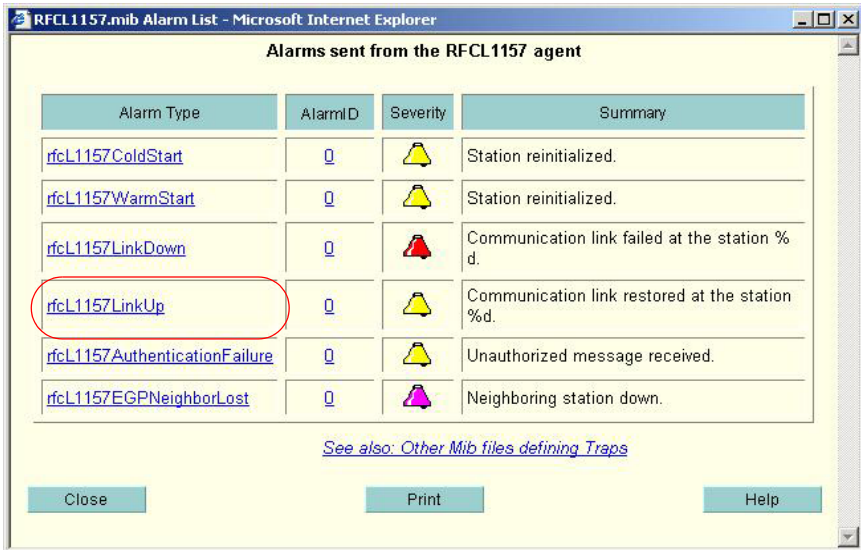
- **Alarm Monitor alarm list**



● Alarm Configuration alarm list



● MIB file Help alarm list



In order to use this display the above screens, perform the following operations:

1. Start the ServerView AlarmService.
2. Click AlarmService [Help].
3. Click [Agent alarm information] in the [Contents].
4. Click [RFC1157.mib] in "AlarmMib".

■ Description Examples that Appear in the MIB File

Description examples that appear in the mib file are shown below.

```
testTrap TRAP-TYPE
ENTERPRISE sniServerMgmt
VARIABLES {
  trapServerName,
  trapTime
}
DESCRIPTION
  "Test trap to verify trap connection."
--#TYPE          "Test trap"
--#SUMMARY       "Test trap from server %s (no error)."
```

```
--#ARGUMENTS     { 0 }
--#SEVERITY      INFORMATIONAL
--#TIMEINDEX     1
--#HELP          "Note: This is no error condition."
--#HELPTAG
--#STATE         OPERATIONAL
::= 600
```

B Trap List

B.1 SNI-TRAP-MIB (trap.mib)

Traps from the ServerView console.

Table: SNI-TRAP-MIB Trap (ENTERPRISE : enterprises.231)

TRAP-TYPE/ Alarm type	Specific	Severity	Detailed Messages (%d: optional number %s: system variable)	Remarks
sniNWVolSysMounted Volume SYS is mounted	0	INFORMAT IONAL	Volume SYS is mounted on server %s	A Netware monitor Trap. Not supported.
sniNWSysVolumeDismounted Volume SYS is dismounted	1	CRITICAL	Volume SYS is dismounted on server %s	↑
sniNWVolumeMounted Volume is mounted	2	INFORMAT IONAL	Volume %s is mounted on server %s	↑
sniNWVolumeDismounted Volume is dismounted	3	INFORMAT IONAL	Volume %s is dismounted on server %s	↑
sniNWDownServer Server is going down (NetWare)	4	CRITICAL	Server is going down: %s	↑
sniNWExitToDos Server exits to DOS	7	CRITICAL	Server exits to DOS : %s	↑
sniNWModuleUnloaded Module is unloaded	8	INFORMAT IONAL	Module %s is unloaded on server %s	↑
sniNWClearConnection Connection is cleared	9	INFORMAT IONAL	A connection is cleared on server %s	↑
sniNWLoginUser User logged into server	10	INFORMAT IONAL	A user logged into server %s	↑
sniNWCreateBinderyObj Bindery object created	11	INFORMAT IONAL	A bindery object is created on server %s	↑
sniNWDeleteBinderyObj Bindery object deleted	12	INFORMAT IONAL	A bindery object is deleted on server %s	↑
sniNWChangeSecurity Security changed (NetWare)	13	INFORMAT IONAL	Security change has occurred on server %s	↑
sniNWActivateScreen Screen activated	14	INFORMAT IONAL	A screen is activated on server %s	↑
sniNWUpdateScreen Screen updated	15	INFORMAT IONAL	A screen is updated on server %s	↑
sniNWUpdateCursor Cursor position updated	16	INFORMAT IONAL	The cursor position is updated on server %s	↑
sniNWKeyWasPressed Key pressed	17	INFORMAT IONAL	A key is pressed on server %s	↑
sniNWDeactivateScreen Screen deactivated	18	INFORMAT IONAL	A screen is deactivated on server %s	↑
sniNWTrusteeChange Trustee changed (NetWare)	19	INFORMAT IONAL	Trustee is changed on server %s	↑
sniNWOpenScreen Screen opened	20	INFORMAT IONAL	A Screen is opened on server %s	↑

Table: SNI-TRAP-MIB Trap (ENTERPRISE : enterprises.231)

TRAP-TYPE/ Alarm type	Specific	Severity	Detailed Messages (%d: optional number %s: system variable)	Remarks
sniNWCloseScreen Screen closed	21	INFORMAT IONAL	A Screen is closed on server %s	↑
sniNWModifyDirEntry Directory entry changed	22	INFORMAT IONAL	Directory entry is changed on server %s	↑
sniNWNoRelinquishControl NLM has not relinquished control	23	CRITICAL	The NLM %s has not relinquished control on server %s	↑
sniNWThreadSwitch Thread switch has occurred	25	INFORMAT IONAL	A thread switch has occurred on server %s	↑
sniNWModuleLoaded Module loaded	27	INFORMAT IONAL	Module %s is loaded on server %s	↑
sniNWCreateProcess Process created	28	INFORMAT IONAL	A Process is created on server %s	↑
sniNWDestroyProcess Process destroyed	29	INFORMAT IONAL	A Process is destroyed on server %s	↑
sniNWNewPublic New public symbol	32	INFORMAT IONAL	A new public symbol is registered on server %s	↑
sniNWProtocolBind Protocol bound	33	INFORMAT IONAL	A protocol is bound to a MLID on server %s	↑
sniNWProtocolUnbind Protocol unbound	34	MAJOR	A protocol is unbound from a MLID on server %s	↑
sniNWAllocateConnection Connection allocated	37	INFORMAT IONAL	A connection is allocated on server %s	↑
sniNWLogoutConnection User logged out	38	INFORMAT IONAL	A user has logged out of server %s	↑
sniNWMLIDRegister MLID registered	39	INFORMAT IONAL	A MLID is registered on server %s	↑
sniNWMLIDDeRegister MLID deregistered	40	INFORMAT IONAL	A MLID is deregistered on server %s	↑
sniNWDataMigration File data migrated	41	INFORMAT IONAL	A files data has been migrated on server %s	↑
sniNWDataDeMigration File data demigrated	42	INFORMAT IONAL	A files data has been demigrated on server %s	↑
sniNWQueueAction Queue status changed	43	INFORMAT IONAL	A queue is activated, deactivated, created or deleted on server %s	↑
sniNWAlert Alert written	44	INFORMAT IONAL	A Netware Alert message is written to the console on server %s. Module %s: %s	↑
sniNWCreateObject DS object created	46	INFORMAT IONAL	A Directory Service object is created on server %s	↑
sniNWDeleteObject DS object deleted	47	INFORMAT IONAL	A Directory Service object is deleted on server %s	↑
sniNWRenameObject DS object renamed	48	INFORMAT IONAL	A Directory Service object is renamed on server %s	↑
sniNWValueChanged DS object value changed	49	INFORMAT IONAL	A Directory Service object's value changed on server %s	↑
sniNWCloseFile File closed	50	INFORMAT IONAL	A file is closed on server %s	↑
sniNWChangeTime Time changed (NetWare)	51	INFORMAT IONAL	Time has changed or a nonuniform time adjustment has occurred on server %s	↑

Table: SNI-TRAP-MIB Trap (ENTERPRISE : enterprises.231)

TRAP-TYPE/ Alarm type	Specific	Severity	Detailed Messages (%d: optional number %s: system variable)	Remarks
sniInvPollTrapExceeded Threshold exceeded	128	INFORMAT IONAL	Threshold exceeded : %s, on Server %s	This message shows that the threshold exceeded the value set in the threshold manager.
sniInvPollTrapUnderflow Threshold underflow	129	INFORMAT IONAL	Threshold underflow : %s, on Server %s	↑
sniInvPollDeltaExceeded DELTA-Threshold exceeded	130	INFORMAT IONAL	DELTA-Threshold exceeded : %s, on Server %s	↑
sniInvDeltaTrapUnderflow DELTA-Threshold underflow	131	INFORMAT IONAL	DELTA-Threshold underflow : %s, on Server %s	↑
sniInvTrapInvalid Threshold invalid	132	INFORMAT IONAL	Threshold Invalid: %s, on Server %s	This message refers to the value set in the threshold manager.
sniInvTrapValid Threshold valid	133	INFORMAT IONAL	Threshold Valid: %s, on Server %s	↑
sniNTDownServer Server is going down (NT)	300	INFORMAT IONAL	Server is going down : %s	
sniNTLoginUser User logged in	301	INFORMAT IONAL	A user logged into server %s	
sniNTChangeSecurity Security changed (NT)	302	INFORMAT IONAL	Security change has occurred on server %s	
sniNTTrusteeChange Trustee changed (NT)	303	INFORMAT IONAL	A trustee is changed on server %s	
sniNTAlert NT Alert written	304	INFORMAT IONAL	An NT Alert message is written to the eventlog (Control String: %s) on server %s.	
sniNTChangeTime Time changed (NT)	305	INFORMAT IONAL	Time has changed or a nonuniform time adjustment has occurred on server %s	
sniNTRegChangeName Keyname changed	310	INFORMAT IONAL	Keyname in registry has been changed on server %s	
sniNTRegChangeAttr Registry key attributes changed	311	INFORMAT IONAL	Attributes for a key or its subtree in registry has been changed on server %s	
sniNTRegChangeLastWrite Registry last write time changed	312	INFORMAT IONAL	Last write time for a key or its subtree in registry has been changed on server %s	
sniNTRegChangeSecurity Registry key security changed	313	INFORMAT IONAL	Security for a key or its subtree in registry has been changed on server %s	
sniNTFileChangeName File name modified	320	INFORMAT IONAL	A file name has been changed, created or deleted on server %s	
sniNTFileChangeDirName Directory name modified	321	INFORMAT IONAL	A directory name has been changed, created or deleted on server %s	
sniNTFileChangeAttr File attributes changed	322	INFORMAT IONAL	File or directory attributes have been changed on server %s	
sniNTFileChangeSize File size changed	323	INFORMAT IONAL	File size has been changed on server %s	
sniNTFileChangeLastWrite File last write time changed	324	INFORMAT IONAL	Last write time on a file has been changed on server %s	
sniNTFileChangeSecurity File security changed	325	INFORMAT IONAL	Security on a file has been changed on server %s	

Table: SNI-TRAP-MIB Trap (ENTERPRISE : enterprises.231)

TRAP-TYPE/ Alarm type	Specific	Severity	Detailed Messages (%d: optional number %s: system variable)	Remarks
sniNTEventLogError Eventlog entry: error	330	INFORMAT IONAL	Error entry written to eventlog on server %s	
sniNTEventLogWarning Eventlog entry: warning	331	INFORMAT IONAL	Warning entry written to eventlog on server %s Warning entry written to eventlog on server %s	
sniNTEventLogInformation Eventlog entry: information	332	INFORMAT IONAL	Informational entry written to eventlog on server %s	
sniNTEventLogSuccess Eventlog entry: success audit	333	INFORMAT IONAL	Audit success entry written to eventlog on server %s	
sniNTEventLogFailure Eventlog entry: failure audit	334	INFORMAT IONAL	Failure audit entry written to eventlog on server %s	

B.2 SNI-SERVER-CONTROL-MIB (sc.mib)

Traps from the ServerView agent or RSB.

Table: SNI-SERVER-CONTROL-MIB Trap (ENTERPRISE : enterprises.231.2.10.2)

TRAP-TYPE/ Alarm type	Specific	Severity	Detailed Messages (%d: optional number %s: system variable)	Remarks
testTrap Test trap	600	INFORMAT IONAL	Test trap from server %s (no error).	No error.
fanError Fan failed	601	CRITICAL	Fan %d failed in cabinet %d of server %s.	A fan error occurred. Contact an office listed in the "Contact Information" of "Start Guide".
tempOk Temperature normal	602	INFORMAT IONAL	Temperature at sensor %d in cabinet %d of server %s is within normal range.	The internal temperature of the server is within the normal range. No error.
tempWarn Temperature warning	603	MAJOR	Temperature at sensor %d in cabinet %d of server %s has reached the warning level.	A device temperature error occurred. Check the room temperature.
tempCritical Temperature critical	604	CRITICAL	Temperature at sensor %d in cabinet %d of server %s has reached the critical level.	If room temperature is normal check whether the fan has failed. Other errors in hardware are possible. Contact an office listed in the "Contact Information" of "Start Guide".
trapOnBattery AC failed, on battery	606	CRITICAL	AC failure. Cabinet %d is running on battery power since %d seconds. In %d minutes server %s will shutdown.	Running on UPS battery power. Check that UPS power cables are not unplugged and there has been no power interruption.
trapOnMains AC OK	607	INFORMAT IONAL	Mains returned after power failure in cabinet %d at server %s.	Stopped running on the UPS battery.

Table: SNI-SERVER-CONTROL-MIB Trap (ENTERPRISE : enterprises.231.2.10.2)

TRAP-TYPE/ Alarm type	Specific	Severity	Detailed Messages (%d: optional number %s: system variable)	Remarks
selfestWarning Controller selfest warning	608	MINOR	The Server Management controller in cabinet %d has detected an minor problem during selfest of server %s.	No problem. If multiple messages are detected, it is possible that the Server Management controller has failed. Contact an office listed in the "Contact Information" of "Start Guide".
selfestError Controller selfest error	609	CRITICAL	The Server Management controller in cabinet %d of server %s failed.	Contact an office listed in the "Contact Information" of "Start Guide".
svCommunicationFailure Communication lost	610	MINOR	Communication with the Server Management controller in cabinet %d of server %s lost.	If recovered in event ID:10636, there is no problem. If not restored, contact an office listed in the "Contact Information" of "Start Guide".
scbUnconfiguredUPSDetected UPS not configured	611	INFORMAT IONAL	UPS detected by server %s, but no UPS is configured.	It is possible that there is an error in the settings. Recheck the settings. If there is no error in the settings it is possible that a UPS error occurred. Contact an office listed in the "Contact Information" of "Start Guide".
scbUPSNotdetected UPS not detected	612	MAJOR	A UPS is configured but no UPS detected by server %s.	
scbUnconfiguredBBUDetected BBU not configured	613	INFORMAT IONAL	BBU detected by server %s, but no BBU is configured.	
scbBBUNotdetected BBU not detected	614	INFORMAT IONAL	A BBU is configured but no BBU is detected by server %s.	
notEnoughCabinets SE's missing	615	MAJOR	The actual number of storage extensions at server %s is lower than the configured.	There is an error in the configuration of the external memory device. Recheck this.
tooManyCabinets Too many SE's	616	MINOR	The actual number of storage extensions at server %s is higher than the configured.	
cabinetSwitchedOff Cabinet switched off	617	INFORMAT IONAL	Cabinet %d was switched off because of %s (server %s).	Server%s has turned off.
cabinetSwitchedOn Cabinet switched on	618	INFORMAT IONAL	Cabinet %d was switched on because of %s (server %s).	Server%s has turned on.
internalError Internal error	620	INFORMAT IONAL	Internal error #%d in server management controller software. (module %s at server %s).	This is a software error. Specify the name of the module and contact an office listed in the "Contact Information" of "Start Guide".

Table: SNI-SERVER-CONTROL-MIB Trap (ENTERPRISE : enterprises.231.2.10.2)

TRAP-TYPE/ Alarm type	Specific	Severity	Detailed Messages (%d: optional number %s: system variable)	Remarks
serverShutdown Server shutdown	621	INFORMAT IONAL	The reason %s causes a shutdown at server %s.	Shutdown at the server is performed by ordering shutdown.ServerView Agent sends this trap only when ServerView Agent shuts the OS down.
fanCriticalError Fan will fail	622	MAJOR	Fan %d will fail in near future in cabinet %d of server %s.	This predicts a fan error. A failure will not occur soon. Contact an office listed in the "Contact Information" of "Start Guide".
cabinetNotConfigured Cabinet not configured	623	INFORMAT IONAL	Cabinet %d at server %s is not configured. Depending on the system type, run Server Configuration Utility (SCU) or Storage Extension Manager (SEMAN) and configure the cabinet!	The cabinet is not correctly configured. Set again.
powerSupplyRemoved Power supply removed	624	INFORMAT IONAL	Power supply %d in cabinet %d at server %s was removed.	The power supply unit was removed by the operator.
powerSupplyAdded Power supply added	625	INFORMAT IONAL	Power supply %d in cabinet %d at server %s was added.	The power supply unit was added by the operator.
powerSupplyFailed Power supply failed	626	MAJOR	Power supply %d in cabinet %d at server %s failed.	The Power supply unit has failed. Contact an office listed in the "Contact Information" of "Start Guide".
powerSupplyOk Power supply OK	627	INFORMAT IONAL	Power supply %d in cabinet %d at server %s is working again.	This message appears after the power supply unit has been attached.
powerSupplyStatusCritical Power supply critical	628	CRITICAL	Insufficient operating power supplies available in cabinet %d at server %s.	Install the power supply unit.
fanOk Fan OK	629	INFORMAT IONAL	Fan %d in cabinet %d of server %s is working again.	This message shows that the fan has returned to normal. This message appears when a fan is replaced.
tempSensorBroken Temperature sensor broken	630	MAJOR	Temperature sensor %d in cabinet %d of server %s is broken or not connected.	Temperature sensor may be faulty. Contact an office listed in the "Contact Information" of "Start Guide".
serverManagementDisabled Server management disabled	631	INFORMAT IONAL	Server management BIOS on server %s is disabled. Enable it to have full server management functionality!	In order to enable the server management, perform settings using the maintenance tools attached to the hardware.

Table: SNI-SERVER-CONTROL-MIB Trap (ENTERPRISE : enterprises.231.2.10.2)

TRAP-TYPE/ Alarm type	Specific	Severity	Detailed Messages (%d: optional number %s: system variable)	Remarks
trapAcFail AC failed	632	CRITICAL	AC failure in cabinet %d of server %s.	This message is stored when performing UPS scheduled operations. There is no problem in this case. When not performing UPS scheduled operations, there is a possibility of a power supply error. Contact an office listed in the "Contact Information" of "Start Guide".
trapDuplicateCabinetId Duplicate cabinet ID	633	MAJOR	Two or more cabinets have the same ID %d on server %s.	There is an error in the system configuration. Set the configuration again.
trapEventLog Error in event log	634	MAJOR	An error was recorded on server %s. See server management event / error log (Recovery) for detailed information.	An error occurred during POST. See the information stored in "Action" and "Error buffer" in ServerView.
tempSensorOk Temperature sensor OK	635	INFORMATIONAL	Temperature sensor %d in cabinet %d of server %s is working again.	This message appears when the temperature sensor recovers.
svCommunicationEstablished Communication established	636	INFORMATIONAL	Communication with the Server Management controller in cabinet %d of server %s established again.	This message appears when communication with the Server Management controller recovers.
correctableMemErrorAddr Correctable memory error	637	INFORMATIONAL	Correctable memory error at address %d in cabinet %d of server %s.	An SBE (memory single bit error) occurred. There is no effect because of the existence of ECC memory.
uncorrectableMemErrorAddr Uncorrectable memory error	638	CRITICAL	Uncorrectable memory error at address %d in cabinet %d of server %s.	An MBE (memory multibit error) occurred. Contact an office listed in the "Contact Information" of "Start Guide".
correctableMemErrorBank Correctable memory error #1	639	INFORMATIONAL	Correctable memory error at bank %d in cabinet %d of server %s.	An SBE (memory single bit) occurred. This error has no effect as ECC memory is being used.

Table: SNI-SERVER-CONTROL-MIB Trap (ENTERPRISE : enterprises.231.2.10.2)

TRAP-TYPE/ Alarm type	Specific	Severity	Detailed Messages (%d: optional number %s: system variable)	Remarks
uncorrectableMemErrorBank Uncorrectable memory error #1	640	CRITICAL	Uncorrectable memory error at bank %d in cabinet %d of server %s.	An MBE (memory multibit error occurred. Contact an office listed in the "Contact Information" of "Start Guide".
correctableMemErrorModule Correctable memory error #2	641	INFORMAT IONAL	Correctable memory error at module %d in cabinet %d of server %s.	An SBE (memory single bit error) occurred. This error has no effect as ECC memory is being used.
uncorrectableMemErrorModul e Uncorrectable memory error #2	642	CRITICAL	Uncorrectable memory error at module %d in cabinet %d of server %s.	An MBE (memory multibit error) occurred. Contact an office listed in the "Contact Information" of "Start Guide".
correctableMemError Correctable memory error #3	643	INFORMAT IONAL	Correctable memory error in cabinet %d of server %s.	An SBE (memory single bit error) occurred. This error has no effect as ECC memory is being used.
uncorrectableMemError Uncorrectable memory error #3	644	CRITICAL	Uncorrectable memory error in cabinet %d of server %s.	An MBE (memory multibit error) occurred. Contact an office listed in the "Contact Information" of "Start Guide".
powerOffTimeReached Power off time reached	645	INFORMAT IONAL	The power-off time is reached in cabinet %d on server %s! System shutdown in %d minutes.	Shut down is performed due to an order by the ServerView console or a power off scheduled in ServerView.
frontDoorStatusChanged Front door status changed	646	INFORMAT IONAL	The front door status of cabinet %d on server %s has changed.	The door has been opened or closed by the operator.
housingOpenStatusChanged Housing open status changed	647	INFORMAT IONAL	The housing open status of cabinet %d on server %s has changed.	The cover of the server has been opened or closed by the operator.
sniScRedundantFanFailed Redundant fan failed	648	MAJOR	The redundant fan %d failed in cabinet %d of server %s. System can become critical if another fan in this group fails.	A redundant fan failure has occurred. Contact an office listed in the "Contact Information" of "Start Guide".

Table: SNI-SERVER-CONTROL-MIB Trap (ENTERPRISE : enterprises.231.2.10.2)

TRAP-TYPE/ Alarm type	Specific	Severity	Detailed Messages (%d: optional number %s: system variable)	Remarks
sniScRedundantPowerSupply Failed Redundant power supply failed	649	MAJOR	Redundant power supply %d in cabinet %d at server %s failed. System can become critical if another power supply fails.	A redundant power supply failure has occurred. Contact an office listed in the "Contact Information" of "Start Guide".
sniScVoltageOk Voltage OK	650	INFORMATIONAL	Power supply voltage %d (%) in cabinet %d at server %s is within normal range again.	The server voltage has recovered. There is no problem.
sniScVoltageTooLow Voltage too low	651	CRITICAL	Power supply voltage %d (%) in cabinet %d at server %s is too low.	A problem may have occurred with the power supply unit, AC power supply or the base board etc. Contact an office listed in the "Contact Information" of "Start Guide".
sniScVoltageTooHigh Voltage too high	652	CRITICAL	Power supply voltage %d (%) in cabinet %d at server %s is too high.	A problem may have occurred with the power supply unit, AC power supply or the base board etc. Contact an office listed in the "Contact Information" of "Start Guide".
sniScFanAdded Fan added	653	INFORMATIONAL	The fan %d was added into cabinet %d of server %s.	The fan was added by the operator.
sniScFanRemoved Fan removed	654	INFORMATIONAL	The fan %d was removed from cabinet %d of server %s.	The fan was removed by the operator.
sniScShutdownCancelled Shutdown cancelled	655	INFORMATIONAL	Shutdown at server %s cancelled by the user.	This is an operation.
sniScCpuSpeedChanged CPU speed changed	656	INFORMATIONAL	CPU speed at server %s changed to %d percent of its maximum speed. The CPU speed can be changed by the server management because of temperature problems.	The speed of the CPU is lowered because of the high temperature of the CPU. Check CPU temperature. A broken fan may be causing the temperature of the CPU to rise.
sieScPowerOn Power on	657	INFORMATIONAL	The reason %s causes a power on at server %s.	This message appears when the power supply is turned on.
sieScNoBootCpu No boot cpu	658	INFORMATIONAL	System boot of the server %s failed, because no valid boot cpu available.	Check the system. A CPU error may have occurred.
sieScPostError Post error	659	INFORMATIONAL	The reason %s causes a power on at server %s.	If this occurs frequently, contact an office listed in the "Contact Information" of "Start Guide".

Table: SNI-SERVER-CONTROL-MIB Trap (ENTERPRISE : enterprises.231.2.10.2)

TRAP-TYPE/ Alarm type	Specific	Severity	Detailed Messages (%d: optional number %s: system variable)	Remarks
sieScSetupEntered Setup entered	660	INFORMATIONAL	The bios setup is entered at server %s.	Setup operations have been performed by the operator.
sieScBootError Boot error	661	INFORMATIONAL	No bootable operation system found at server %s.	Check the system.
sieScBootWatchdogExpired Boot watchdog expired	662	INFORMATIONAL	Boot watchdog of server %s expired.	Operations were performed for the amount of retry counters set. Set the retry counters again.
sieScSoftwareWatchdogExpired Software watchdog expired	663	INFORMATIONAL	Software watchdog of server %s expired.	Operations were performed for the amount of retry counters set. Set the retry counters again.
sieScUserAuthenticationFailure User authentication failure	664	MAJOR	User authentication failure detected at server %s, interface %d, performing protocol %s.	Check the authentication operations.
sieScDiagnosticBoot Diagnostic boot	665	INFORMATIONAL	Server %s is performing a diagnostic boot.	Diagnostic operations are performed by the operator.
sieScBootRetryCountZero Boot retry counter zero	666	MAJOR	Boot retry counter is zero on server %s. On next critical error shutdown the server will no longer try to reboot. System will run diagnostic system or switch off.	Operations were performed for the amount of retry counters set. Set the retry counters again.
sieScMessageLogFull Message log full	667	MINOR	The System Event Log on server %s in cabinet %d is full. No more messages can be logged. Please clear unneeded log entries as soon as possible!	Clear the unnecessary System Event Log using the maintenance tools attached to the hardware.
memErrorModulePrefailure Memory module prefailure	668	MAJOR	Memory module failure is predicted for module %d in cabinet %d of server %s.	This predicts a memory error. Contact an office listed in the "Contact Information" of "Start Guide".
memErrorModuleFailing Memory module failing	669	MAJOR	Memory module %d in cabinet %d of server %s is failing. Too many errors have occurred.	Warning predicting a memory error. Contact an office listed in the "Contact Information" of "Start Guide".
memErrorModuleReplaced Memory module replaced	670	MAJOR	Memory module %d in cabinet %d of server %s had failed and was replaced by a hot-spare module.	Memory error. Contact an office listed in the "Contact Information" of "Start Guide".

Table: SNI-SERVER-CONTROL-MIB Trap (ENTERPRISE : enterprises.231.2.10.2)

TRAP-TYPE/ Alarm type	Specific	Severity	Detailed Messages (%d: optional number %s: system variable)	Remarks
sniScPowerSupplyRedundancyLost Power supply redundancy lost	671	MINOR	Power supply redundancy in cabinet %d at server %s lost. System will become critical if a power supply fails.	Power supply unit error. Contact an office listed in the "Contact Information" of "Start Guide".
sieScMessageLogWarning Message log warning	672	MINOR	The System Event Log for cabinet %d at server %s has exceeded %d%% of its capacity.	A prediction of System Event Log. Clear the unnecessary System Event Log using the maintenance tools attached to the hardware.
sieScCpuPrefailure CPU prefailure	673	MAJOR	CPU failure is predicted for CPU %d in cabinet %d of server %s.	Warning predicting a CPU error. Contact an office listed in the "Contact Information" of "Start Guide".
sieScPowerFail Power failed	674	CRITICAL	DC power failure in cabinet %d of server %s.	Power supply unit error. Contact an office listed in the "Contact Information" of "Start Guide".
sieScBiosSelftestError Critical BIOS selftest error	675	CRITICAL	A critical error happened while BIOS selftest in cabinet %d of server %s. See server management message log (recovery log) for detailed information.	An error has been detected during BIOS selftest. See SEL for details and contact an office listed in the "Contact Information" of "Start Guide".
sieScBiosSelftestWatchdogExpired BIOS selftest watchdog expired	676	MAJOR	BIOS selftest watchdog of server %s expired.	An error has been detected during BIOS selftest. See SEL for details and Contact an office listed in the "Contact Information" of "Start Guide".
sniScVoltageFailure Voltage out of range	677	CRITICAL	Power supply voltage %d (%s) in cabinet %d at server %s is out of range.	Power supply unit error. Contact an office listed in the "Contact Information" of "Start Guide".
sniScBatteryVoltagePrefailure Battery failure predicted	678	MAJOR	Battery voltage %d (%s) in cabinet %d at server %s: Battery is predicted to fail in near future.	This predicts a power supply unit error. Contact an office listed in the "Contact Information" of "Start Guide".

Table: SNI-SERVER-CONTROL-MIB Trap (ENTERPRISE : enterprises.231.2.10.2)

TRAP-TYPE/ Alarm type	Specific	Severity	Detailed Messages (%d: optional number %s: system variable)	Remarks
sieScSevereSystemError The system was restarted after a severe problem	679	CRITICAL	The system was restarted after a severe problem at cabinet %d of server %s. See server management message log (recovery log) for detailed information.	A serious problem has occurred on your system. Contact an office listed in the "Contact Information" of "Start Guide".

B.3 SNI-SERVERVIEW-MIB (serverview.mib)

ServerView management console traps.

Table: SNI-SERVERVIEW-MIB Trap (ENTERPRISE : enterprises.231.2.10.2)

TRAP-TYPE/ Alarm type	Specific	Severity	Detailed Messages (%d: optional number %s: system variable)	Remarks
sniSvGenericTrapForward ServerView alarm received	700	INFORMAT IONAL	The server %s sent the trap <%s> to ServerView application at station %s	Trap sent from the alarm service.
sniSvPagerOff Pager turn off	701	INFORMAT IONAL	Pager number %d should be turned off.	
sniSvServerStateChanged Server changed state	702	INFORMAT IONAL	The server %s has changed its state to %s	
sniSvPassThroughTrapForwar d ServerView alarm passed through	703	INFORMAT IONAL	%s	Trap sent from the alarm service.
sieSvAlarmServiceCommand Alarm Service Command	704	INFORMAT IONAL	Command %d from server %s.	
fscSvServerAdded Server added	705	INFORMAT IONAL	Server %s was added.	
fscSvServerRemoved Server removed	706	INFORMAT IONAL	Server %s was removed.	
fscSvServerChanged Server changed	707	INFORMAT IONAL	Server %s was changed.	
fscSvServerStatusChanged Server status changed	708	INFORMAT IONAL	Server status %s was changed.	
fscSvGroupAdded Group added	709	INFORMAT IONAL	Group (%s, %d) was added.	
fscSvGroupRemoved Group removed	710	INFORMAT IONAL	Group (%s, %d) was removed.	
fscSvGroupChanged Group changed	711	INFORMAT IONAL	Group (%s, %d) was changed.	
fscSvExploreServer Explore server	712	INFORMAT IONAL	Explore server %s.	
fscAsTestMail Alarm Service Test Mail	747	INFORMAT IONAL	The Alarm Service on server %s sends a test mail.	
fscAsTestPager Alarm Service Test Pager	748	INFORMAT IONAL	The Alarm Service on server %s tests a pager.	

Table: SNI-SERVERVIEW-MIB Trap (ENTERPRISE : enterprises.231.2.10.2)

TRAP-TYPE/ Alarm type	Specific	Severity	Detailed Messages (%d: optional number %s: system variable)	Remarks
fscAsStopTrapListenService Alarm Service Stop Trap Listen Service	749	INFORMATIONAL	The ServerView Alarm Service Trap Listen Service on server %s stops.	

B.4 SNI-HD-MIB (hd.mib)

Traps from FSC HD SMARTMonitoring.

Table: SNI-HD-MIB Trap (ENTERPRISE : enterprises.231.2.10.2)

TRAP-TYPE/ Alarm type	Specific	Severity	Detailed Messages (%d: optional number %s: system variable)	Remarks
sniSMARTFailurePredicted SMART predicted disk failure	750	CRITICAL	SMART predicts failure on disk %d (%s), adapter %d (%s), on Server %s.	Warning predicting a disk error. Contact an office listed in the "Contact Information" of "Start Guide".
sniSMARTMonitoringDisabled SMART configuration changed	751	INFORMATIONAL	SMART configuration has been changed on hard disk %d (%s), adapter %d (%s), on Server %s.	This message appears when SMART mode has been changed.

B.5 SERVERVIEW-STATUS-MIB (status.mib)

Traps from the ServerView status agent.

Table: SERVERVIEW-STATUS-MIB Trap (ENTERPRISE : enterprises.231.2.10.2)

TRAP-TYPE/ Alarm type	Specific	Severity	Detailed Messages (%d: optional number %s: system variable)	Remarks
sieStTrapStatusChanged Status changed	1100	INFORMATIONAL	System status has changed at server %s.	For the cause of this Trap, check the previous or next Trap (AlarmService (Alarm Monitor)/OS Event log) (→pg.4). No response is required when there is no Trap.

B.6 FSC-SERVERCONTROL2-MIB (sc2.mib)

Traps from the ServerView agent.

Table: FSC-SERVERCONTROL2-MIB Trap (ENTERPRISE : enterprises.231.2.10.2.2.10.20)

TRAP-TYPE/ Alarm type	Specific	Severity	Detailed Messages (%d: optional number %s: system variable)	Remarks
sc2TrapTest Test trap	2000	INFORMAT IONAL	Test trap from server %s (no error).	No error.
sc2TrapCommunicationFailure Communication lost	2001	MINOR	Communication with the Server Management controller in cabinet %d of server %s lost.	If it is recovered in event ID:12002 there is no problem. If it is not restored, contact an office listed in the "Contact Information" of "Start Guide".
sc2TrapCommunicationEstabl ished Communication established	2002	INFORMAT IONAL	Communication with the Server Management controller in cabinet %d of server %s established again.	This message appears when communication with the Server Management controller has recovered.
sc2TrapControllerSelftestWar ning Controller selftest warning	2003	MINOR	The Server Management controller in cabinet %d has detected an minor problem during selftest of server %s.	No problem. If multiple messages are detected, it is possible that the Server Management controller has failed. Contact an office listed in the "Contact Information" of "Start Guide".
sc2TrapControllerSelftestError Controller selftest error	2004	CRITICAL	The Server Management controller in cabinet %d of server %s failed.	Contact an office listed in the "Contact Information" of "Start Guide".
sc2TrapBiosSelftestError Critical BIOS selftest error	2005	CRITICAL	A critical error happend while BIOS selftest in cabinet %d of server %s. See server management message log (recovery log) for detailed information.	Contact an office listed in the "Contact Information" of "Start Guide".
sc2TrapSevereSystemError The system was restarted after a severe problem	2006	CRITICAL	The system was restarted after a severe problem at cabinet %d of server %s. See server management message log (recovery log) for detailed information.	A serious problem has red on your system. and contact an office listed in the "Contact Information" of "Start Guide".
sc2TrapFanAdded Fan added	2010	INFORMAT IONAL	Fan '%s' was added into cabinet %d of server %s.	The fan was added by the operator.
sc2TrapFanRemoved Fan removed	2011	INFORMAT IONAL	Fan '%s' was removed from cabinet %d of server %s.	The fan was removed by the operator.
sc2TrapFanOk Fan OK	2012	INFORMAT IONAL	Fan '%s' in cabinet %d of server %s is working again.	This message shows that the fan has returned to normal. This message appears when a fan is replaced.

Table: FSC-SERVERCONTROL2-MIB Trap (ENTERPRISE : enterprises.231.2.10.2.2.10.20)

TRAP-TYPE/ Alarm type	Specific	Severity	Detailed Messages (%d: optional number %s: system variable)	Remarks
sc2TrapFanCritical Fan failure predicted	2013	MAJOR	Fan '%s' will fail in near future in cabinet %d of server %s.	This predicts a fan error. A failure will not occur soon. Contact an office listed in the "Contact Information" of "Start Guide".
sc2TrapFanFailed Fan failed	2014	CRITICAL	Fan '%s' failed in cabinet %d of server %s.	A fan error occurred. Contact an office listed in the "Contact Information" of "Start Guide".
sc2TrapRedundantFanFailed Redundant fan failed	2015	MAJOR	The redundant fan '%s' failed in cabinet %d of server %s. System can become critical if another fan in this group fails.	A redundant fan failure occurred. Contact an office listed in the "Contact Information" of "Start Guide".
sc2TrapTempOk Temperature normal	2020	INFORMATIONAL	Temperature at sensor '%s' in cabinet %d of server %s is within normal range.	The internal temperature of the server is within the normal range. No error.
sc2TrapTempWarning Temperature warning	2021	MAJOR	Temperature at sensor '%s' in cabinet %d of server '%s' has reached the warning level.	A device temperature error occurred. Check the room temperature.
sc2TrapTempCritical Temperature critical	2022	CRITICAL	Temperature at sensor '%s' in cabinet %d of server %s has reached the critical level.	If room temperature is normal check whether the fan has failed. Other errors in hardware are possible. Contact an office listed in the "Contact Information" of "Start Guide".
sc2TrapTempSensorOk Temperature sensor OK	2023	INFORMATIONAL	Temperature sensor '%s' in cabinet %d of server %s is working again.	This message appears when the temperature sensor recovers.
sc2TrapTempSensorBroken Temperature sensor broken	2024	MAJOR	Temperature sensor '%s' in cabinet %d of server %s is broken or not connected.	Temperature sensor may be faulty. Contact an office listed in the "Contact Information" of "Start Guide".
sc2TrapPowerSupplyAdded Power supply added	2030	INFORMATIONAL	Power supply '%s' in cabinet %d at server %s was added.	The power supply unit was added by the operator.
sc2TrapPowerSupplyRemoved Power supply removed	2031	INFORMATIONAL	Power supply '%s' in cabinet %d at server %s was removed	The power supply unit was removed by the operator.
sc2TrapPowerSupplyOk Power supply OK	2032	INFORMATIONAL	Power supply '%s' in cabinet %d at server %s is working again.	This message appears after the power supply unit has been attached.
sc2TrapPowerSupplyCritical Power supply critical	2033	CRITICAL	Insufficient operating power supplies available in cabinet %d at server %s.	Install the power supply unit.

Table: FSC-SERVERCONTROL2-MIB Trap (ENTERPRISE : enterprises.231.2.10.2.2.10.20)

TRAP-TYPE/ Alarm type	Specific	Severity	Detailed Messages (%d: optional number %s: system variable)	Remarks
sc2TrapPowerSupplyFailed Power supply failed	2034	MAJOR	Power supply '%s' in cabinet %d at server %s failed.	The Power supply unit has failed. Contact an office listed in the "Contact Information" of "Start Guide".
sc2TrapRedundantPowerSupplyFailed Redundant power supply failed	2035	MAJOR	Redundant power supply '%s' in cabinet %d at server %s failed. System can become critical if another power supply fails.	A redundant power supply failure has occurred. Contact an office listed in the "Contact Information" of "Start Guide".
sc2TrapPowerSupplyRedundancyLost Power supply redundancy lost	2036	MINOR	Power supply redundancy in cabinet %d at server %s lost. System will become critical if a power supply fails.	Power supply unit error. Contact an office listed in the "Contact Information" of "Start Guide".
sc2TrapAcFail AC failed	2040	CRITICAL	AC failure in cabinet %d of server %s.	This message is stored when performing UPS scheduled operations. There is no problem in this case. When not performing UPS scheduled operations, there is a possibility of a power supply error. Contact an office listed in the "Contact Information" of "Start Guide".
sc2TrapDcFail Power failed	2041	CRITICAL	DC power failure in cabinet %d of server %s.	Power supply unit error. Contact an office listed in the "Contact Information" of "Start Guide".
sc2TrapOnBattery AC failed, on battery	2042	CRITICAL	AC failure. Cabinet %d is running on battery power since %d seconds. In %d minutes server %s will shutdown.	Running on UPS battery power. Check that UPS power cables are not unplugged and there has been no power interruption.
sc2TrapOnMains AC OK	2043	INFORMATIONAL	Mains returned after power failure in cabinet %d at server %s.	Stopped running on the UPS battery.
sc2TrapVoltageOk Voltage OK	2050	INFORMATIONAL	Power supply voltage '%s' in cabinet %d at server %s is within normal range again.	The server voltage has recovered. There is no problem.

Table: FSC-SERVERCONTROL2-MIB Trap (ENTERPRISE : enterprises.231.2.10.2.2.10.20)

TRAP-TYPE/ Alarm type	Specific	Severity	Detailed Messages (%d: optional number %s: system variable)	Remarks
sc2TrapVoltageTooLow Voltage too low	2051	CRITICAL	Power supply voltage '%s' in cabinet %d at server %s is too low.	A problem may have occurred with the power supply unit, AC power supply or the base board etc. Contact an office listed in the "Contact Information" of "Start Guide".
sc2TrapVoltageTooHigh Voltage too high	2052	CRITICAL	Power supply voltage '%s' in cabinet %d at server %s is too high.	A problem may have occurred with the power supply unit, AC power supply or the base board etc. Contact an office listed in the "Contact Information" of "Start Guide".
sc2TrapVoltageFailed Voltage out of range	2053	CRITICAL	Power supply voltage '%s' in cabinet %d at server %s is out of range.	Power supply unit error. Contact an office listed in the "Contact Information" of "Start Guide".
sc2TrapBatteryVoltagePrefail Battery failure predicted	2054	MAJOR	Battery voltage '%s' in cabinet %d at server %s: Battery is predicted to fail in near future.	This predicts a power supply unit error. Contact an office listed in the "Contact Information" of "Start Guide".
sc2TrapCorrectableMemError Addr Correctable memory error	2060	INFORMAT IONAL	Correctable memory error at address %d in cabinet %d of server %s.	An SBE (memory single bit error) has occurred. This error has no effect as ECC memory is being used.
sc2TrapUncorrectableMemErr orAddr Uncorrectable memory error	2061	CRITICAL	Uncorrectable memory error at address %d in cabinet %d of server %s.	An MBE (memory multibit error) has occurred. Contact an office listed in the "Contact Information" of "Start Guide".
sc2TrapCorrectableMemError Bank Correctable memory error	2062	INFORMAT IONAL	Correctable memory error at bank '%s' in cabinet %d of server %s.	An SBE (memory single bit error) has occurred. This error has no effect as ECC memory is being used.
sc2TrapUncorrectableMemErr orBank Uncorrectable memory error	2063	CRITICAL	Uncorrectable memory error at bank '%s' in cabinet %d of server %s.	An MBE (memory multibit error) has occurred. Contact an office listed in the "Contact Information" of "Start Guide".
sc2TrapCorrectableMemError Module Correctable memory error	2064	INFORMAT IONAL	Correctable memory error at module '%s' in cabinet %d of server %s.	An SBE (memory single bit error) has occurred. This error has no effect as ECC memory is being used.

Table: FSC-SERVERCONTROL2-MIB Trap (ENTERPRISE : enterprises.231.2.10.2.2.10.20)

TRAP-TYPE/ Alarm type	Specific	Severity	Detailed Messages (%d: optional number %s: system variable)	Remarks
sc2TrapUncorrectableMemErrorModule Uncorrectable memory error	2065	CRITICAL	Uncorrectable memory error at module '%s' in cabinet %d of server %s.	An MBE (memory multibit error) has occurred. Contact an office listed in the "Contact Information" of "Start Guide".
sc2TrapCorrectableMemError Correctable memory error	2066	INFORMATIONAL	Correctable memory error in cabinet %d of server %s.	An SBE (memory single bit error) has occurred. This error has no effect as ECC memory is being used.
sc2TrapUncorrectableMemError Uncorrectable memory error	2067	CRITICAL	Uncorrectable memory error in cabinet %d of server %s.	An MBE (memory multibit error) has occurred. Contact an office listed in the "Contact Information" of "Start Guide".
sc2TrapMemErrorModulePrefail Memory module prefailure	2068	MAJOR	Memory module failure is predicted for module '%s' in cabinet %d of server %s.	This predicts a memory error. Contact an office listed in the "Contact Information" of "Start Guide".
sc2TrapMemErrorModuleFailing Memory module failing	2069	MAJOR	Memory module '%s' in cabinet %d of server %s is failing. Too many errors have occurred.	A warning predicting a memory error. Contact an office listed in the "Contact Information" of "Start Guide".
sc2TrapMemErrorModuleReplaced Memory module replaced	2070	MAJOR	Memory module '%s' in cabinet %d of server %s had failed and was replaced by a hot-spare module	Memory error. Contact an office listed in the "Contact Information" of "Start Guide".
sc2TrapMemErrorLoggingDisabled Memory error logging disabled	2071	MINOR	Too many correctable memory errors in cabinet %d at server %s. Error logging was disabled.\nIf logging was disabled and not automatically enabled again, you have to reboot your server to enable memory error logging again.\nIf logging is disabled, prefailure detection is also not active!	A warning predicting a memory error. Contact an office listed in the "Contact Information" of "Start Guide".
sc2TrapMemErrorLoggingEnabled Memory error logging enabled	2072	MINOR	Error logging was enabled again in cabinet %d at server %s (after being disabled because of too many errors)	A warning predicting a memory error. Contact an office listed in the "Contact Information" of "Start Guide".

Table: FSC-SERVERCONTROL2-MIB Trap (ENTERPRISE : enterprises.231.2.10.2.2.10.20)

TRAP-TYPE/ Alarm type	Specific	Severity	Detailed Messages (%d: optional number %s: system variable)	Remarks
sc2TrapMemErrorAnyModule Replaced Memory module replaced	2073	MAJOR	A memory module in cabinet %d of server %s had failed and was replaced by a hot-spare module	Memory error. Contact an office listed in the "Contact Information" of "Start Guide".
sc2TrapMemErrorRedundancyLost Memory redundancy lost	2074	MAJOR	Memory configuration in cabinet %d of server %s has lost redundancy	Memory error. Contact an office listed in the "Contact Information" of "Start Guide".
sc2TrapCpuSpeedChanged CPU speed changed	2080	INFORMATIONAL	CPU speed at server %s changed to %d percent of its maximum speed.	The speed of the CPU is lowered because of the high temperature of the CPU. Check CPU temperature. A broken fan may cause the temperature of the CPU to rise.
sc2TrapCpuPrefail CPU prefailure	2081	MAJOR	CPU failure is predicted for CPU '%s' in cabinet %d of server %s.	Warning predicting a CPU error. Contact an office listed in the "Contact Information" of "Start Guide".
sc2TrapCabinetSwitchedOff Cabinet switched off	2090	INFORMATIONAL	Cabinet %d was switched off because of %s (server %s).	Server %s has turned off.
sc2TrapCabinetSwitchedOn Cabinet switched on	2091	INFORMATIONAL	Cabinet %d was switched on because of %s (server %s).	Server %s has turned on.
sc2TrapPowerOffTimeReached Power off time reached	2092	INFORMATIONAL	The power-off time is reached in cabinet %d on server %s! System shutdown in %d minutes.	Shut down is performed due to an order by the ServerView console or a power off scheduled in ServerView.
sc2TrapServerShutdown Server shutdown	2093	INFORMATIONAL	The reason %s causes a shutdown at server %s.	Shutdown at the server is performed by ordering shutdown.
sc2TrapShutdownCancelled Shutdown cancelled	2094	INFORMATIONAL	Shutdown at server %s cancelled by the user.	Shutdown at the scheduled operation or ASR&R (etc.) is canceled by the operator.
sc2TrapBootRetryCountZero Boot retry counter zero	2095	MAJOR	Boot retry counter is zero on server %s.	Operations were performed for the amount of retry counters set. Set the retry counters again.
sc2TrapServerBoot Server booted	2096	INFORMATIONAL	Server %s was booted.	Not supported.
sc2TrapServerStandby Standby mode entered	2097	INFORMATIONAL	Server %s entered standby mode.	Not supported.

Table: FSC-SERVERCONTROL2-MIB Trap (ENTERPRISE : enterprises.231.2.10.2.2.10.20)

TRAP-TYPE/ Alarm type	Specific	Severity	Detailed Messages (%d: optional number %s: system variable)	Remarks
sc2TrapServerSuspend Suspend mode entered	2098	INFORMAT IONAL	Server %s entered suspend mode.	Not supported.
sc2TrapServerResumed Resume from standby or suspend mode	2099	INFORMAT IONAL	Server %s resumed from standby or suspend mode.	Not supported.
sc2TrapMessageLogFull Message log full	2100	MINOR	The System Event Log on server %s in cabinet %d is full. No more messages can be logged! Please clear unneeded log entries as soon as possible!	Clear the unnecessary System Event Log using the maintenance tools attached to the hardware.
sc2TrapMessageLogWarning Message log warning	2101	MINOR	The System Event Log for cabinet %d at server %s has exceeded %d%% of its capacity.	This predicts a System Event Log. Clear the unnecessary System Event Log using the maintenance tools attached to the hardware.
sc2TrapBootMessageLogEntry Error in message log	2102	MAJOR	An error was recorded on server %s before the management agents were started (boot phase). See server management message log (Recovery log) for detailed information.	Boot error. See SEL for details and contact an office listed in the "Contact Information" of "Start Guide".
sc2TrapIntrusionAssertion Front door or housing opened	2110	MAJOR	The front door or housing of cabinet %d was opened on server %s.	The front door or housing of cabinet was opened.
sc2TrapIntrusionDeassertion Front door or housing closed	2111	INFORMAT IONAL	The front door or housing of cabinet %d was closed on server %s.	The front door or housing of cabinet was closed.
sc2TrapIntrusionChanged Front door or housing opened/ closed	2112	MAJOR	The front door or housing of cabinet %d was opened or closed on server %s.	The front door or housing of cabinet was opened or closed.
sc2TrapPciBusError PCI bus system/parity error	2113	CRITICAL	A PCI bus system or parity error happened in cabinet %d on server %s.	Contact an office listed in the "Contact Information" of "Start Guide".
sc2TrapCssWarning Customer self service warning	2120	MAJOR	Warning status on component '%s' in cabinet %d of server '%s'. This component may be replaced by the customer.	Replace an affected component. This component may be replaced by the customer. Contact an office listed in the "Contact Information" of "Start Guide".
sc2TrapCssFail Customer self service fail	2121	MAJOR	Fail status on component '%s' in cabinet %d of server '%s'. This component may be replaced by the customer.	Replace an affected component. This component may be replaced by the customer. Contact an office listed in the "Contact Information" of "Start Guide".

B.7 FSC-THRESHOLD-REPORT-MIB (Threshold.mib)

Traps from the Performance manager.

Table: FSC-THRESHOLD-REPORT-MIB Trap (ENTERPRISE : enterprises.231.2.47.2)

TRAP-TYPE/ Alarm type	Specific	Severity	Detailed Messages (%d: optional number %s: system variable)	Remarks
threshTrapThresholdExceeded Critical Threshold exceeded (critical)	2200	CRITICAL	Threshold exceeded at server %s. The rule %s met condition with value %s. Rule user comment: %s	
threshTrapThresholdExceeded Major Threshold exceeded (major)	2201	MAJOR	Threshold exceeded at server %s. The rule %s met condition with value %s. Rule user comment: %s	
threshTrapThresholdExceeded Minor Threshold exceeded (minor)	2202	MINOR	Threshold exceeded at server %s. The rule %s met condition with value %s. Rule user comment: %s	
threshTrapThresholdExceeded Informational Threshold exceeded (informational)	2203	INFORMAT IONAL	Threshold exceeded at server %s. The rule %s met condition with value %s. Rule user comment: %s	
threshTrapThresholdResume Threshold resume	2204	INFORMAT IONAL	Threshold resume at server %s. The rule %s no longer meets condition with value %s. Rule user comment: %s	

B.8 FSC-RAID-MIB (raid.mib)

Traps from the ServerView RAID. Refer to the ServerView RAID manual for details.

B.9 SIEMENS-MULTIPATH-MIB (mp.mib)

Traps from FSC MultiPath SNMP agent's.

Table: SIEMENS-MULTIPATH-MIB Trap (ENTERPRISE : enterprises.231.2.10.2)

TRAP-TYPE/ Alarm type	Specific	Severity	Detailed Messages (%d: optional number %s: system variable)	Remarks
sieMPError MP: Last port failed	1200	CRITICAL	MultiPath group %d on server %s is down.	
sieMPRetry MP: Port failed	1201	MAJOR	Port %d of MultiPath group %d on server %s is down. Error on ID %d, Lun %d.	
sieMPActivePortChanged MP: Port activated	1202	INFORMAT IONAL	Active port for MultiPath group %d changed on server %s. Port %d is now active port.	
sieMPReconfigured MP: Port added/removed	1203	INFORMAT IONAL	MultiPath group %d reconfigured on server %s. Port %d was affected.	
sieMPStatusChanged MP: Behavior changed	1204	INFORMAT IONAL	MultiPath behavior for group %d was changed on server %s.	
sieMPAutoRecovered MP: Port alive again	1205	INFORMAT IONAL	MultiPath group %d on server %s: Port %d recovered from error.	
sieMPErrorCleared MP: Status cleared	1206	INFORMAT IONAL	MultiPath group %d on server %s: Error for MultiPath port %d was cleared.	

B.10 SERVERVIEW-DUPLEXDATAMANAGER-MIB (ddm.mib)

Traps from DuplexDataManage. Refer to the S60 manual for details.

Table: SERVERVIEW-DUPLEXDATAMANAGER-MIB Trap (ENTERPRISE : enterprises.231.2.10.2)

TRAP-TYPE/ Alarm type	Specific	Severity	Detailed Messages (%d: optional number %s: system variable)	Remarks
fscDdmNewConfig DDM: New DuplexWrite configuration	1400	INFORMATIONAL	Configuration for DuplexWrite group %d/%d/%d/%d was created or updated on server %s.	
fscDdmPieceRemoved DDM: DuplexWrite piece removed	1401	INFORMATIONAL	DuplexWrite piece %d/%d/%d/%d was removed from group on server %s.	
fscDdmConfigRemoved DDM: DuplexWrite configuration removed	1402	INFORMATIONAL	DuplexWrite group %d/%d/%d/%d was removed on server %s.	
fscDdmStatusSet DDM: DuplexWrite status changed	1403	MINOR	Status of DuplexWrite piece %d/%d/%d/%d on server %s has changed (user request).	
fscDdmUpdateStatus DDM: DuplexWrite status updated	1404	MINOR	Status of DuplexWrite piece %d/%d/%d/%d on server %s has changed (driver request).	
fscDdmPieceRecovered DDM: DuplexWrite piece recovered	1405	INFORMATIONAL	DuplexWrite piece %d/%d/%d/%d successfully recovered on server %s.	
fscDdmRecoverAborted DDM: Recover aborted	1406	MINOR	DuplexWrite piece %d/%d/%d/%d aborted Recover process on server %s.	
fscDdmReservationConflict DDM: reservation conflict	1407	INFORMATIONAL	Reservation conflict occurred on DuplexWrite group %d/%d/%d/%d on server %s - group is not accessible.	
fscDdmConfigChanged DDM: DuplexWrite configuration changed	1408	INFORMATIONAL	DuplexWrite has found a new configuration on server %s.	
fscDdmConfigInvalidated DDM: DuplexWrite configuration invalidated	1409	INFORMATIONAL	Configuration information was invalidated for DuplexWrite group %d/%d/%d/%d on server %s.	
fscDdmActiveLunChanged DDM: Active DuplexWrite piece changed	1410	INFORMATIONAL	DuplexWrite piece %d/%d/%d/%d is used for read commands on server %s.	
fscDdmPieceFailed DDM: DuplexWrite piece failed	1411	CRITICAL	DuplexWrite piece %d/%d/%d/%d failed on server %s.	
fscDdmRootFlagChanged DDM: RootDisk flag changed	1412	INFORMATIONAL	RootDisk flag changed on DuplexWrite group %d/%d/%d/%d on server %s.	
fscDdmForceActive DDM: DuplexWrite piece forced active	1413	INFORMATIONAL	DuplexWrite piece %d/%d/%d/%d marked forced active on server %s (Snapshot).	
fscDdmNameChanged DDM: DuplexWrite name changed	1414	INFORMATIONAL	Name of DuplexWrite group %d/%d/%d/%d has changed on server %s.	
fscDdmPathFailed DDM: MultiPath path failed	1415	CRITICAL	MultiPath path %d/%d/%d/%d failed on server %s.	

Table: SERVERVIEW-DUPLEXDATAMANAGER-MIB Trap (ENTERPRISE : enterprises.231.2.10.2)

TRAP-TYPE/ Alarm type	Specific	Severity	Detailed Messages (%d: optional number %s: system variable)	Remarks
fscDdmRetry DDM: MultiPath path retrieved	1416	MAJOR	MultiPath path %d/%d/%d/%d failed on server %s - retry successful on other port.	
fscDdmActivePortChanged DDM: Active MultiPath path changed	1417	INFORMAT IONAL	MultiPath path %d/%d/%d/%d is active on server %s.	
fscDdmReconfigured DDM: MultiPath reconfigured	1418	INFORMAT IONAL	MultiPath configuration changed on server %s.	
fscDdmStatusChanged DDM: MultiPath status changed	1419	INFORMAT IONAL	Status of MultiPath path %d/%d/%d/%d has changed on server %s.	
fscDdmAutoRecovered DDM: MultiPath path AutoRecovered	1420	INFORMAT IONAL	MultiPath path %d/%d/%d/%d automatically recovered on server %s.	
fscDdmErrorCleared DDM: MultiPath path error cleared	1421	INFORMAT IONAL	Error cleared on MultiPath path %d/%d/%d/%d on server %s.	
fscDdmPnPRemove DDM: PnP Removal	1422	INFORMAT IONAL	Plug and Play Removal occurred on server %s.	
fscDdmPnPNew DDM: PnP Add	1423	INFORMAT IONAL	Plug and Play Add occurred on server %s.	
fscDdmCluster DDM: Cluster configuration changed	1424	INFORMAT IONAL	Cluster configuration changed on server %s.	

B.11 SNI-MYLEX-MIB (mylex.mib)

Traps from the Mylex Disk Array Controller. Refer to the RAID controller (RAID Manager (GAM: Global Array Manager)) manual for details.

Table: SNI-MYLEX-MIB Trap (ENTERPRISE : enterprises.231.2.10.2)

TRAP-TYPE/ Alarm type	Specific	Severity	Detailed Messages (%d: optional number %s: system variable)	Remarks
mylexAutoRebuildStarted Automatic rebuild started	200	INFORMAT IONAL	Automatic rebuild of device %d on channel %d was started at disk array adapter in slot %d. The standby device %d at channel %d will be used (Server %s).	
mylexManualRebuildStarted Manual rebuild started	201	INFORMAT IONAL	Manual rebuild was started at disk array adapter in slot %d at server %s.	
mylexRebuildDone Rebuild done	202	INFORMAT IONAL	Rebuild was successfully completed at disk array adapter in slot %d (Server %s).	
mylexRebuildCanceled Rebuild cancelled	203	INFORMAT IONAL	Rebuild was cancelled at disk array adapter in slot %d (Server %s).	
mylexRebuildStatus Rebuild status	204	INFORMAT IONAL	Rebuild status at disk array adapter in slot %d: current drive=%d, drive size=%d MBytes; %d MBytes remaining (Server %s).	
mylexRebuildError Rebuild error	205	MAJOR	Rebuild error at disk array adapter in slot %d: %d bad blocks detected (Server %s).	

Table: SNI-MYLEX-MIB Trap (ENTERPRISE : enterprises.231.2.10.2)

TRAP-TYPE/ Alarm type	Specific	Severity	Detailed Messages (%d: optional number %s: system variable)	Remarks
mylexRebuildNewDeviceFailed Rebuild device failed	206	MAJOR	Rebuild finished at disk array adapter in slot %d: new device failed (Server %s).	
mylexRebuildLogicalDriveFailed Rebuild drive failed	207	MAJOR	Rebuild finished at disk array adapter in slot %d: logical drive failed, %d bad blocks detected (Server %s).	
mylexParityCheckStarted Parity check started	208	INFORMATIONAL	Parity check was started at disk array adapter in slot %d (Server %s).	
mylexParityCheckDone Parity check done	209	INFORMATIONAL	Parity check was successfully completed at disk array adapter in slot %d (Server %s).	
mylexParityCheckCanceled Parity check cancelled	210	INFORMATIONAL	Parity check was cancelled at disk array adapter in slot %d (Server %s).	
mylexParityCheckStatus Parity check status	211	INFORMATIONAL	Parity check status at disk array adapter in slot %d: current drive=%d, drive size=%d MB; %d MBytes remaining (Server %s).	
mylexParityCheckError Parity check error	212	MAJOR	Parity check error at disk array adapter in slot %d: %d bad blocks detected (Server %s).	
mylexParityCheckLogicalDriveFailed Parity check: drive failed	213	MAJOR	Parity check finished at disk array adapter in slot %d; logical drive failed: %d bad blocks detected (Server %s).	
mylexLogicalDriveOffline Logical drive offline	214	CRITICAL	Logical drive %d at disk array adapter in slot %d is offline (Server %s).	
mylexLogicalDriveCritical Logical drive critical	215	MAJOR	Logical drive %d at disk array adapter in slot %d is critical (Server %s).	
mylexLogicalDriveOnline Logical drive online	216	INFORMATIONAL	Logical drive %d at disk array adapter in slot %d is online (Server %s).	
mylexPhysicalDeviceDied Physical device dead	217	CRITICAL	Physical device %d on channel %d at disk array adapter in slot %d is DEAD (Server %s).	
mylexPhysicalDeviceAlive Physical device online	218	INFORMATIONAL	Physical device %d on channel %d at disk array adapter in slot %d is now ONLINE (Server %s).	
mylexWriteBackError Write back error	219	MAJOR	Controller cache write back error at disk array adapter in slot %d: %d bad blocks (Server %s).	
mylexStateChangeTableFull Cache change table full	220	MAJOR	Cache state-change table full at disk array adapter in slot %d (Server %s).	
mylexAdapterDied Disk controller died	221	CRITICAL	Connection to disk array controller in slot %d on server %s lost.	
mylexAutoRebuildStarted2 Automatic rebuild started	222	INFORMATIONAL	Automatic rebuild of system drive %d was started at disk array adapter in slot %d at server %s.	
mylexManualRebuildStarted2 Manual rebuild started	223	INFORMATIONAL	Manual rebuild of system drive %d was started at disk array adapter in slot %d at server %s.	
mylexRebuildDone2 Rebuild done	224	INFORMATIONAL	Rebuild of system drive %d was successfully completed at disk array adapter in slot %d at server %s.	

Table: SNI-MYLEX-MIB Trap (ENTERPRISE : enterprises.231.2.10.2)

TRAP-TYPE/ Alarm type	Specific	Severity	Detailed Messages (%d: optional number %s: system variable)	Remarks
mylexRebuildCanceled2 Rebuild cancelled	225	INFORMATIONAL	Rebuild of system drive %d was cancelled at disk array adapter in slot %d at server %s.	
mylexRebuildError2 Rebuild error	226	MAJOR	Rebuild error on system drive %d at disk array adapter in slot %d at server %s.	
mylexRebuildNewDeviceFailed2 Rebuild device failed	227	MAJOR	Rebuild of system drive %d finished at disk array adapter in slot %d: new device failed at server %s.	
mylexRebuildLogicalDriveFailed2 Rebuild drive failed	228	MAJOR	Rebuild of system drive %d finished at disk array adapter in slot %d: system drive failed at server %s.	
mylexInitializationStarted Initialization started	229	INFORMATIONAL	Initialization of system drive %d started at disk array adapter in slot %d at server %s.	
mylexInitializationDone Initialization done	230	INFORMATIONAL	Initialization of system drive %d successfully finished at disk array adapter in slot %d at server %s.	
mylexInitializationCanceled Initialization canceled	231	INFORMATIONAL	Initialization of system drive %d canceled at disk array adapter in slot %d at server %s.	
mylexInitializationFailed Initialization failed	232	MAJOR	Initialization of system drive %d failed at disk array adapter in slot %d at server %s.	
mylexSystemDriveCreated System drive created	233	INFORMATIONAL	New system drive %d created at disk array adapter in slot %d at server %s.	
mylexSystemDriveDeleted System drive deleted	234	INFORMATIONAL	System drive %d deleted at disk array adapter in slot %d at server %s.	
mylexRaidExpansionStarted RAID expansion started	235	INFORMATIONAL	RAID capacity expansion on system drive %d started at disk array adapter in slot %d at server %s.	
mylexRaidExpansionDone RAID expansion done	236	INFORMATIONAL	RAID capacity expansion on system drive %d successfully finished at disk array adapter in slot %d at server %s.	
mylexRaidExpansionFailed RAID expansion failed	237	MAJOR	RAID capacity expansion failed on system drive %d at disk array adapter in slot %d at server %s.	
mylexSystemDriveBadBlock Bad block	238	MINOR	Bad block(s) detected on system drive %d at disk array adapter in slot %d at server %s.	
mylexSystemDriveSizeChanged System drive size changed	239	INFORMATIONAL	Size of system drive %d was changed at disk array adapter in slot %d at server %s.	
mylexRaidTypeChanged RAID type changed	240	INFORMATIONAL	RAID type of system drive %d was changed at disk array adapter in slot %d at server %s.	
mylexPhysicalDeviceHotspare Physical device hotspare	250	INFORMATIONAL	Physical device %d on channel %d at disk array adapter in slot %d is now HOTSPARE (Server %s).	
mylexPhysicalDeviceHardError Physical device hard error	251	MINOR	Hard error occurred at physical device %d on channel %d at disk array adapter in slot %d (Server %s).	

Table: SNI-MYLEX-MIB Trap (ENTERPRISE : enterprises.231.2.10.2)

TRAP-TYPE/ Alarm type	Specific	Severity	Detailed Messages (%d: optional number %s: system variable)	Remarks
mylexPhysicalDeviceSoftError Physical device soft error	252	MINOR	Soft error occurred at physical device %d on channel %d at disk array adapter in slot %d (Server %s).	
mylexPhysicalDeviceParityError Physical device parity error	253	MINOR	Parity error occurred at physical device %d on channel %d at disk array adapter in slot %d (Server %s).	
mylexPhysicalDeviceMiscError Physical device miscellaneous error	254	MINOR	Miscellaneous error occurred at physical device %d on channel %d at disk array adapter in slot %d (Server %s).	
mylexPhysicalDevicePrefailure Physical device prefailure	255	MAJOR	Prefailure alert from physical device %d on channel %d at disk array adapter in slot %d (Server %s). Device will fail in near future!	
mylexPhysicalDeviceUnconfigured Physical device unconfigured	256	MAJOR	Physical device %d on channel %d at disk array adapter in slot %d is unconfigured (Server %s).	
mylexPhysicalDeviceAdded Physical device added	257	MAJOR	Physical device %d on channel %d at disk array adapter in slot %d was added (Server %s).	
mylexPhysicalDeviceRemoved Physical device removed	258	MAJOR	Physical device %d on channel %d at disk array adapter in slot %d was removed (Server %s).	
mylexWriteBackError2 Write back error	260	MAJOR	Controller cache write back error at disk array adapter in slot %d (Server %s).	
mylexGamDriverMissing Missing GAM driver	261	MINOR	GAM driver is either not installed or has failed to start; required version: %s (server %s).	
mylexGamDriverIncorrectVersion Incorrect GAM driver version	262	MINOR	Incorrect version of GAM driver installed (%s); required version: %s (server %s).	
mylexSMARTFailurePredicted SMART predicted disk failure	270	CRITICAL	SMART predicts failure for disk %d on channel %d at disk array adapter in slot %d (Server %s).	
mylexSMARTConfigurationChanged SMART configuration changed	271	INFORMATIONAL	SMART configuration has been changed for disk %d on channel %d at disk array adapter in slot %d (Server %s).	
mylexBBUFound BBU found	275	INFORMATIONAL	A Battery Backup Unit was found on SCSI controller in slot %d (Server %s).	
mylexBBUPowerLow BBU power low	276	CRITICAL	The Battery Backup Unit power on SCSI controller in slot %d is low (Server %s). If this messages happens without power failure, replace the BBU.	
mylexBBUPowerOK BBU power OK	277	INFORMATIONAL	The Battery Backup Unit power on SCSI controller in slot %d is OK (Server %s).	

B.12 BLADE-MIB (S31.mib)

Traps from blade server (BX300/BX600). Refer to the blade server manual for details.

Table: BLADE-MIB Trap (ENTERPRISE : enterprises.7244.1.1.1)

TRAP-TYPE/ Alarm type	Specific	Severity	Detailed Messages (%d: optional number %s: system variable)	Remarks
s31TestTrap Test trap	1600	INFORMAT IONAL	Test trap from blade chassis %s (no error).	
s31MgmtBladeAdded Management blade added	1601	INFORMAT IONAL	Management blade %d at blade chassis %s was added.	
s31MgmtBladeRemoved Management blade removed	1602	INFORMAT IONAL	Management blade %d at blade chassis %s was removed.	
s31MgmtBladeOk Status of management blade is OK	1603	INFORMAT IONAL	Management blade %d at blade chassis %s status is ok.	
s31MgmtBladeError Status of management blade is error	1604	MAJOR	Management blade %d at blade chassis %s status is error.	
s31MgmtBladeCriticalError Status of management blade is critical	1605	CRITICAL	Management blade %d at blade chassis %s status is critical.	
s31ServerBladeAdded Server blade added	1606	INFORMAT IONAL	Server blade %d at blade chassis %s was added.	
s31ServerBladeRemoved Server blade removed	1607	INFORMAT IONAL	Server blade %d at blade chassis %s was removed.	
s31ServerBladeOk Status of server blade is OK	1608	INFORMAT IONAL	Server blade %d at blade chassis %s status is OK.	
s31ServerBladeError Status of server blade is error	1609	MAJOR	Server blade %d at blade chassis %s status is error.	
s31ServerBladeCriticalError Status of server blade is critical	1610	CRITICAL	Server blade %d at blade chassis %s status is critical.	
s31SwitchBladeAdded Switch blade added	1611	INFORMAT IONAL	Switch blade %d at blade chassis %s was added.	
s31SwitchBladeRemoved Switch blade removed	1612	INFORMAT IONAL	Switch blade %d at blade chassis %s was removed.	
s31SwitchBladeOk Status of switch blade is OK	1613	INFORMAT IONAL	Switch blade %d at blade chassis %s status is OK.	
s31SwitchBladeError Status of switch blade is error	1614	MAJOR	Switch blade %d at blade chassis %s status is error.	
s31SwitchBladeCriticalError Status of switch blade is critical	1615	CRITICAL	Switch blade %d at blade chassis %s status is critical.	
s31SysFanAdded System fan added	1616	INFORMAT IONAL	System fan %d at blade chassis %s was added.	
s31SysFanRemoved System fan removed	1617	INFORMAT IONAL	System fan %d at blade chassis %s was removed.	
s31SysFanOk Status of system fan is OK	1618	INFORMAT IONAL	System fan %d at blade chassis %s status is OK.	
s31SysFanError Status of system fan is error	1619	MAJOR	System fan %d at blade chassis %s status is error.	
s31SysFanCriticalError Status of system fan is critical	1620	CRITICAL	System fan %d at blade chassis %s status is critical.	

Table: BLADE-MIB Trap (ENTERPRISE : enterprises.7244.1.1.1)

TRAP-TYPE/ Alarm type	Specific	Severity	Detailed Messages (%d: optional number %s: system variable)	Remarks
s31SysTempOk Temperature normal	1621	INFORMAT IONAL	Temperature at system temperature sensor %d of blade chassis %s is within normal range.	
s31SysTempError Temperature abnormal	1622	MAJOR	Temperature at system temperature sensor %d of blade chassis %s is out of normal range.	
s31SysTempCriticalError Temperature critical	1623	CRITICAL	Temperature at system temperature sensor %d of blade chassis %s has reached the critical level.	
s31SysTempSensorOk System temperature sensor OK	1624	INFORMAT IONAL	System temperature sensor %d of blade chassis %s is working again.	
s31SysTempSensorBroken System temperature sensor broken	1625	MAJOR	System temperature sensor %d of blade chassis %s is broken or not connected.	
s31SysPowerSupplyAdded Power supply added	1626	INFORMAT IONAL	Power supply unit %d at blade chassis %s was added.	
s31SysPowerSupplyRemoved Power supply removed	1627	INFORMAT IONAL	Power supply unit %d at blade chassis %s was removed.	
s31SysPowerSupplyOk Power supply OK	1628	INFORMAT IONAL	Power supply unit %d at blade chassis %s is working again.	
s31SysPowerSupplyError Power supply failed	1629	MAJOR	Power supply unit %d at blade chassis %s failed.	
s31SysPowerSupplyCriticalEr ror Power supply critical	1630	CRITICAL	Insufficient operating power supplies unit available in power supply unit %d at blade chassis %s.	
s31ServerPowerOn Power on	1631	INFORMAT IONAL	Server blade %d at blade chassis %s is powered on.	
s31ServerPostError Post error	1632	INFORMAT IONAL	Server blade %d at blade chassis %s is posted error.	
s31ServerBootError Boot error	1633	INFORMAT IONAL	No bootable operation system found at server blade %d of blade chassis %s.	
s31ServerShutdown Server shutdown	1634	INFORMAT IONAL	Server blade %d at blade chassis %s is shutdown.	
s31ServerSoftwareWatchdogE xpired Software watchdog expired	1635	INFORMAT IONAL	Software watchdog at server blade %d of blade chassis %s expired.	
s31ServerBootWatchdogExpir ed Boot watchdog expired	1636	INFORMAT IONAL	Boot watchdog at server blade %d of blade chassis %s expired.	
s31UserAuthenticationFailure User authentication failure	1637	MAJOR	User authentication failure detected at blade chassis %s, performing protocol %s.	
s31TrapEventLog Error in event log	1638	MAJOR	An error was recorded on blade chassis %s. See server management event error log (Recovery) for detailed information.	
s31ServerBladeNewAdd Server blade was added on a empty slot	1639	INFORMAT IONAL	Server blade %d at blade chassis %s is added on a empty slot.	

Table: BLADE-MIB Trap (ENTERPRISE : enterprises.7244.1.1.1)

TRAP-TYPE/ Alarm type	Specific	Severity	Detailed Messages (%d: optional number %s: system variable)	Remarks
s31ServerBladeHotReplace Server blade was added on a marked for hot replacement slot	1640	INFORMATIONAL	Server blade %d at blade chassis %s is added on a marked for hot replacement slot.	
s31ServerPowerOff Power off	1641	INFORMATIONAL	Server blade %d at blade chassis %s is powered off.	
s31SysTempSensorAdded System temperature sensor added	1642	INFORMATIONAL	System temperature sensor %d of blade chassis %s is added.	
s31SysTempSensorRemoved System temperature sensor removed	1643	INFORMATIONAL	System temperature sensor %d of blade chassis %s is removed.	
s31LivetimeError System live time has exceeded the limited count	1644	INFORMATIONAL	Server %s live time has exceeded the limited count.	
s31PowerOverBudget Server blade power on failed	1645	INFORMATIONAL	Server blade %d at blade chassis %s power on failed because of over power budget.	
s31NicDetectionFail Nic detection failed	1646	INFORMATIONAL	Management blade %d at blade chassis %s NIC detection failed.	
s31SysPowerSupplyOvpFail Power supply OVP fail	1647	INFORMATIONAL	Power supply unit %d OVP fail.	
s31SysPowerSupplyOcpFail Power supply OCP fail	1648	INFORMATIONAL	Power supply unit %d OCP fail.	
s31FiberChannelAdded Fiber channel pass through card added	1649	INFORMATIONAL	Fiber channel pass through card %d at blade chassis %s was added.	
s31FiberChannelRemoved Fiber channel pass through card removed	1650	INFORMATIONAL	Fiber channel pass through card %d at blade chassis %s was removed.	
s31SysPowerSupplyOverallStatusOk System power supply overall status	1651	INFORMATIONAL	System power supply overall status = OK	
s31SysPowerSupplyOverallStatusDegraded System power supply overall status	1652	INFORMATIONAL	System power supply overall status = degraded	
s31SysPowerSupplyOverallStatusCritical System power supply overall status	1653	INFORMATIONAL	System power supply overall status = critical	
s31SysFanOverallStatusOk System fan overall status	1654	INFORMATIONAL	System fan overall status = OK	
s31SysFanOverallStatusDegraded System fan overall status	1655	INFORMATIONAL	System fan overall status = degraded	
s31SysFanOverallStatusCritical System fan overall status	1656	INFORMATIONAL	system fan overall status = critical	

Table: BLADE-MIB Trap (ENTERPRISE : enterprises.7244.1.1.1)

TRAP-TYPE/ Alarm type	Specific	Severity	Detailed Messages (%d: optional number %s: system variable)	Remarks
s31SysTemperatureOverallSta tusOk System temperature overall status	1657	INFORMAT IONAL	System temperature overall status = OK	
s31SysTemperatureOverallSta tusDegraded System temperature overall status	1658	INFORMAT IONAL	System temperature overall status = degraded	
s31SysTemperatureOverallSta tusCritical System temperature overall status	1659	INFORMAT IONAL	System temperature overall status = critical	
s31LivetimeWarning System live time has pre- expired the limited count	1660	INFORMAT IONAL	Power/fan %s live time has pre-expired the limited count.	

B.13 AdaptecArrayController-MIB (aac.mib)

Traps from blade server (PRIMERGY BX600) HostRAID Adaptec Array Controller. Refer to the blade server manual for details.

Table: AdaptecArrayController-MIB Trap (ENTERPRISE : enterprises.795.10.1.1)

TRAP-TYPE/ Alarm type	Specific	Severity	Detailed Messages (%d: optional number %s: system variable)	Remarks
aacDriveLetterChange A Drive Letter Changed	1	INFORMAT IONAL	A Drive Letter Changed on controller %s for container %d.	
aacFailoverChange A change in failover assignments occurred	2	INFORMAT IONAL	A change in failover assignments occurred on controller %s.	
aacContainerStateChange A container changed its state	3	MINOR	A container changed its state on controller %s. Container : %d.	
aacFileSystemChange A file system change has occurred	4	INFORMAT IONAL	A file system change has occurred on container %d on controller %s.	
aacGeneralContainerFailure An unknown error occurred on container	6	MAJOR	An unknown error occurred on container %d on adapter %s.	
aacMirrorNotMirroring Container no longer mirroring	7	MAJOR	The container %d on controller %s is no longer in the mirroring state.	
aacMirrorFailureNoSpace Not enough failover space for mirror	8	CRITICAL	A failover operation for controller %s container %d failed because there was not enough space available on the failover device.	
aacMirrorFailureNoUnmirror Container could not be unmirrored	9	CRITICAL	The container %d on controller %s could not be unmirrored.	
aacMirrorFailoverStarted Mirror failover started	10	INFORMAT IONAL	A mirror failover operation started on controller %s for container %d.	
aacMirrorFailoverFailed Mirror failover failed	11	CRITICAL	A failover operation on controller %s failed for container %d.	

Table: AdaptecArrayController-MIB Trap (ENTERPRISE : enterprises.795.10.1.1)

TRAP-TYPE/ Alarm type	Specific	Severity	Detailed Messages (%d: optional number %s: system variable)	Remarks
aacMirrorNoFailoverAssigned No failover for mirror	12	MINOR	There is no failover device assigned to container %d on controller %s.	
aacMirrorDriveFailure Mirror drive failure	13	CRITICAL	A drive that was part of the mirror set (container) %d failed. This occurred on controller %d.	
aacRaidRebuildStart Rebuild started	14	INFORMATIONAL	A rebuild operation started on controller %s for container %d.	
aacRaidRebuildRestart Rebuild restarted	15	INFORMATIONAL	A rebuild operation restarted on controller %s for container %d.	
aacRaidDriveFailure RAID Drive Failure	16	CRITICAL	A drive that was part of the RAID set (container) %d failed. This occurred on controller %s.	
aacRaidNoFailover No failover for RAID	17	MINOR	There is no failover device assigned to container %d on controller %s.	
aacRaidNoSpace Not enough failover space for RAID	18	CRITICAL	A failover operation for controller %s container %d failed because there was not enough space available on the failover device.	
aacSnapshotContainerAlmost Full Snapshot almost full	19	MAJOR	The snapshot container %d on controller %s is almost full.	
aacSnapshotContainerFull Snapshot full	20	CRITICAL	The snapshot container %d on controller %s is full.	
aacRaidRebuildComplete Rebuild complete	21	INFORMATIONAL	The rebuild operation on controller %s for container %d has completed.	
aacDeviceFailure Device failure	22	CRITICAL	A device has failed. Controller %s. Bus %d. ID %d LUN %d.	
aacControllerResume Controller resume	23	INFORMATIONAL	The controller %s resumed normal I/O operations.	
aacInterfaceUp Interface up	24	INFORMATIONAL	The AAC management interface is up.	
aacBatteryReconditionRequired Battery reconditioning required	25	MAJOR	The controller %s requires battery reconditioning.	
aacEnclosureGeneralError Enclosure general error	26	MAJOR	An enclosure connected to controller %s has reported an error.	
aacEnclosureFanError Enclosure fan error	27	MAJOR	An enclosure connected to controller %s has reported a fan failure.	
aacEnclosurePowerSupplyError Enclosure power supply error	28	MAJOR	An enclosure connected to controller %s has reported a power supply failure.	
aacEnclosureTempAbnormal Enclosure temperature abnormal	29	MAJOR	An enclosure connected to controller %s has reported an abnormal temperature reading.	
aacEnclosureTempOver Enclosure temperature too high	30	CRITICAL	An enclosure connected to controller %s has reported a temperature reading above the user threshold.	
aacBatteryDead Battery dead	31	CRITICAL	The battery connected to controller %s is dead.	
aacBatteryImproving Battery improving	32	INFORMATIONAL	The battery connected to controller %s is improving.	
aacBatteryDegrading Battery degrading	33	MAJOR	The battery connected to controller %s has lost charge.	

Table: AdaptecArrayController-MIB Trap (ENTERPRISE : enterprises.795.10.1.1)

TRAP-TYPE/ Alarm type	Specific	Severity	Detailed Messages (%d: optional number %s: system variable)	Remarks
aacBatteryGood Battery good	34	INFORMAT IONAL	The controller %s reports that its battery is good.	
aacControllerPaused Controller paused	35	MINOR	The controller %s has been paused.	
aacContainerCreated Container created	36	INFORMAT IONAL	Container %d has been created on controller %s.	
aacContainerDeleted Container deleted	37	INFORMAT IONAL	Container %d has been deleted on controller %s.	
aacDeviceFailurePredictionTh resholdExceeded Device failure prediction threshold exceeded	38	MAJOR	A device reported that its Failure Prediction Threshold had been exceeded. Controller %s. Bus %d. ID %d LUN %d.	
aacDeviceFailurePredictionTe st Device failure prediction test	39	INFORMAT IONAL	A Failure Prediction Threshold test occurred. Controller %s. Bus %d. ID %d. LUN %d.	
aacDeviceWarning Device warning	40	MAJOR	A Device issued a warning. Controller %s. Bus %d. ID %d LUN %d.	
aacDeviceTemperatureWarning Device temperature warning	41	MAJOR	A Device issued a abnormal temperature warning. Controller %s. Bus %d. ID %d LUN %d.	
aacDeviceDegradedWarning Device degraded warning	42	MINOR	A device reported that its status is degraded. Controller %s. Bus %d. ID %d LUN %d.	
aacDeviceFailurePredictionCo nfigurationChanged Device failure prediction configuration changed	43	INFORMAT IONAL	The failure prediction configuration changed for a device. Controller %s. Bus %d. ID %d LUN %d.	
aacGlobalHotSpareReplacedS uccess Failover Replaced	44	INFORMAT IONAL	A failover device has been replaced on controller %s.	
aacDedicatedHotSpareReplac edSuccess Failover Replaced	45	INFORMAT IONAL	A failover device has been replaced on container %d, controller %s.	
aacGlobalHotSpareReplacedT ooSmall Failover Replaced	46	WARNING	The failover device that was replaced on controller %s is too small.	
aacDedicatedHotSpareReplac edTooSmall Failover Replaced	47	WARNING	The failover device that was replaced on container %d, controller %s is too small.	
aacDedicatedHotSpareReplac edArrayNotExist Failover Replaced	48	WARNING	The failover device has been replaced on container %d, controller %s. However, container %d does not exist.	
aacBatteryTemperatureWarning Battery Temperature Warning	49	WARNING	The battery connected to controller %s has reported an over temperature warning.	
aacBatteryTemperatureCritical Battery Temperature Critical	50	CRITICAL	The battery connected to controller %s, has reported that it is critically over temperature.	
aacBatteryTemperatureCritical Recover Battery Temperature Critical Recover	51	INFORMAT IONAL	The battery connected to controller %s, has reported that it has recovered from a critical over temperature.	

Table: AdaptecArrayController-MIB Trap (ENTERPRISE : enterprises.795.10.1.1)

TRAP-TYPE/ Alarm type	Specific	Severity	Detailed Messages (%d: optional number %s: system variable)	Remarks
aacBatteryTemperatureNormal Battery Temperature Warning Recover	52	INFORMAT IONAL	The battery connected to controller %s, has returned to normal.	
aacContainerMetadataUnkno wnError Container Metadata Unknown Error	53	CRITICAL	Container %d has experienced an unknown metadata error on controller %s.	
aacContainerMetadataReadErr or A metadata read error has occurred	54	CRITICAL	A metadata read error has occurred. Controller %s. Bus %d. ID %d LUN %d.	
aacContainerMetadataCRCFai lureError Container Metadata CRC Failure Error	55	CRITICAL	A metadata CRC failure has occurred. Controller %s. Bus %d. ID %d LUN %d.	
aacContainerMiscompareError Container Miscompare Error	56	CRITICAL	Container %d has experienced miscompare error(s) on controller %s.	
aacSCSIBusReset There has been a SCSI bus reset	57	INFORMAT IONAL	There has been a SCSI bus reset. Controller %s. Bus %d.	
aacSenseData Sense data event	58	INFORMAT IONAL	A sense data event has occurred. Controller %s. Bus %d. ID %d LUN %d. Key %s. ASC %s ASCQ %s.	
aacMediumError There has been a device medium error	59	MAJOR	There has been a device medium error. Controller %s. Bus %d. ID %d LUN %d. Begin LBA %s End LBA %s.	
aacBadBlockRecoveryStarting The bad block recovery has started.	60	INFORMAT IONAL	The bad block recovery has started. Controller %s. Bus %d. ID %d LUN %d.	
aacBadBlockRecoveryComple ting The bad block recovery has completed	61	INFORMAT IONAL	The bad block recovery has completed. Controller %s. Bus %d. ID %d LUN %d.	
aacInvalidIO An invalid I/O event has occurred	62	MAJOR	An invalid I/O event has occurred. Controller %s. Bus %d. ID %d LUN %d. Expected Bytes %d, Actual Bytes %d.	
aacDisablingChannel Disabling channel event	63	MINOR	A disabling channel event has occurred. Controller %s. Bus %d. Error Code %d	
aacCannotReadyDevice System can not ready the device	64	MAJOR	The system can not ready the device. Controller %s. Bus %d. ID %d LUN %d.	
aacChannelTimeout Channel Timeout	65	MAJOR	A channel timeout has occurred. Controller %s. Bus %d.	
aacSenseDataUnknown Sense data event	66	MAJOR	A sense data event has occurred. Controller %s. Bus %d. ID %d LUN %d. Key %s. ASC %s ASCQ %s.	
aacCommandTimeout A command timeout has occurred	67	MAJOR	A command timeout has occurred. Controller %s. Bus %d. ID %d LUN %d. OpCode %s.	

Table: AdaptecArrayController-MIB Trap (ENTERPRISE : enterprises.795.10.1.1)

TRAP-TYPE/ Alarm type	Specific	Severity	Detailed Messages (%d: optional number %s: system variable)	Remarks
aacContainerMediumErrorWarning A medium error was encountered while rebuilding a container	68	WARNING	A medium error was encountered while rebuilding a container on Controller %s. Container %d. Block Number %s.	

B.14 IOMMIB (iommbib.mib)

Traps from HostRAID Adaptec IOManager Storage Controllers for blade server (PRIMERGY BX600). Refer to manual of the blade server (PRIMERGY BX600) for details.

Table: IOMMIB Trap (ENTERPRISE : enterprises.795.12.2)

TRAP-TYPE/ Alarm type	Specific	Severity	Detailed Messages (%d: optional number %s: system variable)	Remarks
iomStorageControllerStateChangeI Informational Storage Controller State Change.	1010	INFORMATIONAL	The storage controller %d has changed state.	
iomStorageControllerStateChangeW Warning Storage Controller State Change.	1011	MAJOR	The storage controller %d has changed state.	
iomStorageControllerStateChangeC Critical Storage Controller State Change.	1012	CRITICAL	The storage controller %d has changed state.	
iomBusPortStateChangeI Informational Bus Port State Change.	1020	INFORMATIONAL	The bus port %d has changed state.	
iomBusPortStateChangeW Warning Bus Port State Change.	1021	MAJOR	The bus port %d has changed state.	
iomBusPortStateChangeC Critical Bus Port State Change.	1022	CRITICAL	The bus port %d has changed state.	
iomStorageDeviceStateChangeI Informational Storage Device State Change.	1030	INFORMATIONAL	The storage device %d has changed state.	
iomStorageDeviceStateChangeW Warning Storage Device State Change.	1031	MAJOR	The storage device %d has changed state.	
iomStorageDeviceStateChangeC Critical Storage Device State Change.	1032	CRITICAL	The storage device %d has changed state.	
iomVolumeSetStateChangeI Informational Volume Set State Change.	1040	INFORMATIONAL	The volume set %d has changed state.	

Table: IOMMIB Trap (ENTERPRISE : enterprises.795.12.2)

TRAP-TYPE/ Alarm type	Specific	Severity	Detailed Messages (%d: optional number %s: system variable)	Remarks
iomVolumeSetStateChangeW Warning Volume Set State Change.	1041	MAJOR	The volume set %d has changed state.	
iomVolumeSetStateChangeC Critical Volume Set State Change.	1042	CRITICAL	The volume set %d has changed state.	
iomVolumeSetActivityChangeI Informational Volume Set Activity Change.	1050	INFORMATIONAL	The volume set %d has changed activity.	
iomVolumeSetActivityChangeW Warning Volume Set Activity Change.	1051	MAJOR	The volume set %d has changed activity.	
iomVolumeSetActivityChangeC Critical Volume Set Activity Change.	1052	CRITICAL	The volume set %d has changed activity.	
iomSpareStateChangeI Informational Spare State Change.	1060	INFORMATIONAL	The spare %d has changed state.	
iomSpareStateChangeW Warning Spare State Change.	1061	MAJOR	The spare %d has changed state.	
iomSpareStateChangeC Critical Spare State Change.	1062	CRITICAL	The spare %d has changed state.	
iomEnclosureStateChangeI Informational Enclosure State Change.	1070	INFORMATIONAL	A component in IOManager enclosure %d has changed state.	
iomEnclosureStateChangeW Warning Enclosure State Change.	1071	MAJOR	A component in IOManager enclosure %d has changed state.	
iomEnclosureStateChangeC Critical Enclosure State Change.	1072	CRITICAL	A component in IOManager enclosure %d has changed state.	

B.15 DPT-SCSI-MIB (dptscsi.mib)

Traps from Adaptec's I2O-based RAID Card. Refer to the RAID controller manual for details.

Table: ADAPTECDURALINK-MIB Trap (ENTERPRISE : enterprises.1597)

TRAP-TYPE/ Alarm type	Specific	Severity	Detailed Messages (%d: optional number %s: system variable)	Remarks
dptHbaTemperatureVeryHigh Trap Very high temperature on controller	400	CRITICAL	Very high temperature on controller %d	
dptArrayStatusChangeFailedTrap Array failed	401	CRITICAL	Array failed on Controller %d Bus %d ID %d LUN %d.	

Table: ADAPTECDURALINK-MIB Trap (ENTERPRISE : enterprises.1597)

TRAP-TYPE/ Alarm type	Specific	Severity	Detailed Messages (%d: optional number %s: system variable)	Remarks
dptHbaVoltageChangeTrap 5V Voltage outside range on controller	300	MAJOR	5V Voltage status is now %d on controller %d	
dptHbaTemperatureHighTrap High temperature on controller	301	MINOR	High temperature on controller %d	
dptHbaEccRAMErrorUncorre ctableTrap Controller detected an ECC RAM error that could not be corrected	302	MAJOR	Uncorrectable ECC error found on controller %d	
dptArrayStatusChangeDegrad edTrap Array degraded	303	MAJOR	Array on Controller %d Bus %d ID %d LUN %d running degraded.	
dptDevReqSenseSeriousError Trap Serious: Request sense data received.	304	MAJOR	Serious: Request sense data for controller %d Bus %d ID %d LUN %d.	
dptDevArrayDataInconsistenc yTrap Array data inconsistency found.	305	MAJOR	Array Data Inconsistency: Controller %d Bus %d ID %d LUN %d.	
dptHbaErrorTrap controller error found.	306	MAJOR	controller %d reported a non-SCSI related error.	
dptDevFailedTrap Unprotected drive has failed.	307	MAJOR	Drive failure on controller %d Bus %d ID %d LUN %d.	
dptDevSmartFailedTrap SMART failure reported.	308	MAJOR	SMART failure on controller %d Bus %d ID %d LUN %d reported.	
dptHbaAuxVoltageChangeTrap Auxiliary voltage outside range on controller	309	MAJOR	An auxiliary voltage status is now %d on controller %d	
dptHbaVoltageChange2Trap 5V Voltage outside range on controller	310	MAJOR	5V Voltage status is now %s on controller %d	
dptHbaAuxVoltageChange2Tr ap Auxiliary voltage outside range on controller	311	MAJOR	An auxiliary voltage status is now %s on controller %d	
dptHbaEccRAMErrorCorrecte dTrap ECC RAM Error detected and corrected.	200	MINOR	Correctable ECC RAM Error detected on controller %d	
dptDevBlockReassignedTrap Disk block was reassigned	201	MINOR	Block %d reassigned: Controller %d Bus %d ID %d LUN %d	
dptDevReqSenseErrorTrap Warning: request sense data received.	202	MINOR	Warning: Request sense data for controller %d Bus %d ID %d LUN %d.	
dptHbaVoltageNormalTrap Normal 5V voltage on controller	100	INFORMAT IONAL	Normal 5V voltage restored on controller %d	
dptHbaTemperatureNormalTr ap Normal temperature on controller	101	INFORMAT IONAL	Normal temperature restored on controller %d	

Table: ADAPTECDURALINK-MIB Trap (ENTERPRISE : enterprises.1597)

TRAP-TYPE/ Alarm type	Specific	Severity	Detailed Messages (%d: optional number %s: system variable)	Remarks
dptHbaEccRAMErrrorNotFou ndTrap ECC RAM Error detected but not found on correction.	102	INFORMAT IONAL	ECC RAM Error detected at %d on controller %d, but not found.	
dptDevStatusChangedTrap Device status change	103	INFORMAT IONAL	Device status on Controller %d Bus %d ID %d LUN %d : %d.	
dptDevReqSenseTrap Request sense received from controller.	104	INFORMAT IONAL	Request sense data for controller %d Bus %d ID %d LUN %d.	
dptArrayChangeTrap Array change.	105	INFORMAT IONAL	Array change on controller %d Bus %d ID %d LUN %d.	
dptBatteryChangeTrap Battery status change.	106	INFORMAT IONAL	Battery status is now %d on controller %d.	
dptHbaAuxVoltageNormalTrap Normal auxiliary voltage on controller	107	INFORMAT IONAL	Normal auxiliary voltage restored on controller %d	
dptHbaNoSparesTrap No hot spares detected on controller	108	INFORMAT IONAL	No available hot spares were detected during a scan on controller %d	
dptDevStatusChanged2Trap Device status change	109	INFORMAT IONAL	Device status on Controller %d Bus %d ID %d LUN %d : %s.	
dptBatteryChange2Trap Battery status change.	110	INFORMAT IONAL	Battery status is now %s on controller %d.	
dptOtherTrap Controller generated an event	14	INFORMAT IONAL	Controller generated event: %s	

B.16 MYLEXRAID-MIB (Mlxraid.mib)

Traps from the Mylex Disk Array Controller. Refer to the RAID controller (RAID Manager (GAM: Global Array Manager)) manual for details.

B.17 MYLEXRAID-FJ-MIB (Mlxraidfj.mib)

Traps from the Mylex Disk Array Controller. Refer to the RAID controller (RAID Manager (GAM: Global Array Manager)) manual for details.

B.18 FASTTRAK-MIB (promisev1.mib)

Traps from the Promise IDE RAID Adapter. Refer to the RAID controller (RAID Manager (FastCheckMonitor)) manual for details.

Table: FASTTRAK-MIB Trap (ENTERPRISE : enterprises.7933)

TRAP-TYPE/ Alarm type	Specific	Severity	Detailed Messages (%d: optional number %s: system variable)	Remarks
trpUnknown Unknown - possibly new driver error code	1	INFORMAT IONAL	Unknown	
trpEccError ECC Error on Disk <name> LBA <lba>	2	CRITICAL	ECC Error on Disk	
trpDiskDown Disk Down <disk_name>	3	MAJOR	Disk Set Down by Driver	
trpDiskOffline Disk Offline <disk_name>	4	MAJOR	Disk %d of array %d set offline by driver. Description: %d	
trpDiskPlugin Disk Plugin <disk_name>	5	MINOR	New Disk Plugged In	
trpAryBadSector Array <num> had BadSector at LBA <lba>	6	INFORMAT IONAL	Bad sector encountered	
trpRebuildStart Rebuild Started Array <array> disk <disk>	7	INFORMAT IONAL	Rebuild started	
trpSyncStart Synchronization Started, Array <array>	8	INFORMAT IONAL	Synchronization Started	
trpRetryDisk Retry Disk Task, disk <disk> lba <lba>	9	MINOR	Retry Disk Task	
trpArrayOffline Array Offline <array>	10	MAJOR	Array Offline	
trpArrayCritical Array Critical <array>	11	CRITICAL	Array Critical	
trpArrayRebuildComplete Rebuild Completed, Array <array>, disk <disk>	12	INFORMAT IONAL	Rebuild Completed	
trpArraySyncComplete Sync Completed, array <array>	13	INFORMAT IONAL	Synchronization Completed	
trpMediaError Array <array>, disk <disk> has Media Error at LBA <lba>, cmd=<cmd>, status=<status>	14	CRITICAL	Media Error on Disk	
trpReserveSectorError Reserved Sector Error, Disk <disk> lba <lba>	15	MINOR	Reserved Sector Error	
trpRebuildAborted Rebuild Aborted, Array <array>, disk <disk>, percent <percent>	16	CRITICAL	Rebuild Aborted	

Table: FASTTRAK-MIB Trap (ENTERPRISE : enterprises.7933)

TRAP-TYPE/ Alarm type	Specific	Severity	Detailed Messages (%d: optional number %s: system variable)	Remarks
trpSyncAborted Synchronization Aborted, array <array>, percent <percent>	17	CRITICAL	Sync. Aborted	
trpECCFixFail ECC Fix Failed	18	CRITICAL	ECC Fix Failed	
trpSyncCompError Sync Compare Error, Array <array>, LBA= <lba>	19	MINOR	Sync. Compare Error	
trpSwapBoxPowerDown Swap Box Power Down, channel <ch>, msl <msl>	20	INFORMATIONAL	Swap Box Power Down	
trpSwapBoxPowerUp Swap Box Power Up, channel <ch>, msl <msl>	21	INFORMATIONAL	Swap Box Power Up	
trpSwapBoxBadSwap Swap Box, Bad Swap, channel <ch>, msl <msl>	22	MINOR	Swap Box, Bad Swap	
trpSwapBoxOverTemp Swap Box, Over Temp, channel <ch>, msl <msl>, Temp <fahr>, C <cent>	23	MINOR	Swap Box Over Temp	
trpSwapBoxFanStopped Swap Box Fan Stop, channel <ch>, msl <msl>, RPM= <rpm>	24	MINOR	Swap Box Fan Stop	
trpSwapBox12VOutOfRange Swap Box, 12V Out of Range, channel <ch>, msl <msl>, 12V=<volts>	25	MINOR	12V Out of Range	
trpSwapBox5VOutOfRange Swap Box, 5V Out of Range, channel <ch>, msl <msl>, 5V=<volts>	26	MINOR	5V Out of Range	

B.19 PROMISE-UNIFIED-MIB (promiseraid.mib)

Traps from the Promise FastTrak SATA RAID Adapter. Refer to the RAID controller (RAID Manager (PAM: Promise Array Management)) manual for details.

Table: PROMISE-UNIFIED-MIB Trap (ENTERPRISE : enterprises.7933.4.1.12)

TRAP-TYPE/ Alarm type	Specific	Severity	Detailed Messages (%d: optional number %s: system variable)	Remarks
trpDiskOffline Disk offline	1	CRITICAL	Disk Offline: %s	
trpDiskPlugin New disk plugged in	2	INFORMATIONAL	New Disk Plugged In: %s	
trpDiskMediaError Media error on disk	3	MAJOR	Disk Media Error: %s	
trpDiskSMARTFail SMART error on disk	4	MAJOR	Disk SMART Fail: %s	

Table: PROMISE-UNIFIED-MIB Trap (ENTERPRISE : enterprises.7933.4.1.12)

TRAP-TYPE/ Alarm type	Specific	Severity	Detailed Messages (%d: optional number %s: system variable)	Remarks
trpDiskAccessRetry Disk retry	5	INFORMAT IONAL	Retry Disk Access: %s	
trpDiskECCError Disk ECC Error	6	MAJOR	ECC Error on Disk: %s	
trpDiskTimeOut Disk timed out	7	MAJOR	Disk Time Out: %s	
trpDiskBadSector Bad sector on array	8	CRITICAL	Bad sector encountered on array:%s	
trpArrayMediaError Array Media Error	9	CRITICAL	Array has a read/write error: %s	
trpArrayOffline Array offline	10	CRITICAL	Array offline: %s	
trpArrayCritical Array critical	11	MAJOR	Array critical: %s	
trpArrayCreate Array creation	12	INFORMAT IONAL	Create array: %s	
trpArrayDelete Array deletion	13	MAJOR	Delete array: %s	
trpArrayRebuildStart Rebuild started	14	INFORMAT IONAL	Rebuild started on array: %s	
trpArrayAutoRebuildStart Automatic rebuild started	15	INFORMAT IONAL	Automatic Rebuild started on array: %s	
trpArrayRebuildAborted Rebuild aborted on array	16	MAJOR	Rebuild aborted on array: %s	
trpArrayRebuildPaused Rebuild paused on array	17	MAJOR	Rebuild paused on array: %s	
trpArrayRebuildResumed Rebuild resumed on array	18	INFORMAT IONAL	Rebuild resumed on array: %s	
trpArrayRebuildCompleted Rebuild successfully completed	19	INFORMAT IONAL	Rebuild completed on array: %s	
trpArrayRebuildFailed Rebuild failed	20	INFORMAT IONAL	Rebuild failed on array: %s	
trpArraySyncStarted Synchronization started on array	21	INFORMAT IONAL	Synchronization started on array: %s	
trpArraySyncAborted Synchronization aborted on array	22	INFORMAT IONAL	Synchronization aborted on array: %s	
trpArraySyncPaused Synchronization paused on array	23	INFORMAT IONAL	Synchronization paused on array: %s	
trpArraySyncResumed Synchronization resumed on array	24	INFORMAT IONAL	Synchronization resumed on array: %s	
trpArraySyncCompleted Synchronization successfully completed on array	25	INFORMAT IONAL	Synchronization completed on array: %s	
trpArraySyncFailed Synchronization failed on array	26	CRITICAL	Synchronization failed on array: %s	

Table: PROMISE-UNIFIED-MIB Trap (ENTERPRISE : enterprises.7933.4.1.12)

TRAP-TYPE/ Alarm type	Specific	Severity	Detailed Messages (%d: optional number %s: system variable)	Remarks
trpSyncComparisonError Synchronization comparison error on array	27	CRITICAL	Synchronization comparison error on array: %s	
trpSwapBoxOverTemp Temperature is too high for enclosure	28	MAJOR	Swap Box Over Temp on enclosure: %s	
trpSwapBoxFanStop Fan stopped for enclosure	29	MAJOR	Swap Box Fan Stop: %s	
trpSwapBox5VOutOfRange 5V over/under threshold for enclosure	30	MAJOR	5V Out of Range for array: %s	
trpSwapBox12VOutOfRange 12V over/under threshold for enclosure	31	MAJOR	12V Out of Range for array: %s	
trpSwapBoxPowerUp Enclosure power on	32	INFORMATIONAL	Swap Box Power On: %s	
trpSwapBoxPowerDown Enclosure power off	33	INFORMATIONAL	Swap Box Power Off: %s	
trpUnknown Unknown - possibly new driver error code	34	INFORMATIONAL	Unknown	
trpBatteryTempOutOfRange Battery Temperature Out of Range	35	MAJOR	The battery's temperature is out of range	
trpBatteryUnstableTemp Battery Temperature Unstable	36	MAJOR	The battery's temperature is unstable	
trpBatteryVoltOutOfRange Battery Voltage Out of Range	37	MAJOR	The battery's voltage is out of range	
trpBatteryUnstableVolt Battery Voltage Unstable	38	MAJOR	The battery's voltage is unstable	
trpBatteryCommError Battery Communication Error	39	MAJOR	There is a communication error in the battery	
trpBatteryBecomeNormal Battery Communication Error	40	INFORMATIONAL	The battery status becomes normal	
trpWriteModeChange Write Mode Change/Toggle	41	INFORMATIONAL	Write Mode state changed	
trpDiskErrorFix Disk error fixed	42	INFORMATIONAL	Disk error fixed by entity	
trpMediaPatrolStart Media Patrol	43	INFORMATIONAL	Media patrol started	
trpMediaPatrolStop Media Patrol	44	INFORMATIONAL	Media patrol stopped	
trpMediaPatrolAbort Media Patrol	45	CRITICAL	Media patrol aborted	
trpMediaPatrolComplete Media Patrol	46	INFORMATIONAL	Media patrol completed	
trpMediaPatrolPause Media Patrol	47	INFORMATIONAL	Media patrol paused	
trpMediaPatrolResume Media Patrol	48	INFORMATIONAL	Media patrol resumed	

B.20 SW-MIB (fcswitch.mib)

Traps from Fibre Channel Switch SN200. Refer to the SN200 manual for details.

Table: SW-MIB Trap (ENTERPRISE : enterprises.1588.2.1.1.1)

TRAP-TYPE/ Alarm type	Specific	Severity	Detailed Messages (%d: optional number %s: system variable)	Remarks
swFault Switch is faulty.	1	CRITICAL	Faulty reason: %d	
swSensorScn A sensor (temperature, fan, etc.) changed its operational state.	2	INFORMAT IONAL	%s: is currently in state %d	
swFCPortScn A Fibre Channel Port changed its operational state.	3	INFORMAT IONAL	Port Index %d changed state to %d	
swEventTrap A firmware event has been logged	4	INFORMAT IONAL	Event %d: %s (severity level %d) - %s	
swFabricWatchTrap Fabric Watch has generated an event	5	MINOR	Threshold %s in Class/Area %d at index %d has generated event %d with %d on %s. This event is %d	
swTrackChangesTrap Track changes has generated a trap	6	INFORMAT IONAL	%s	

B.21 INTEL-WFM-MIB (WFM.mib)

Traps (ENTERPRISE : enterprises.3183.1.1) from Wired for Management (RSB S2/iRMC).

Refer to "List of the alarm of Help of the MIB file" for the outline of each trap.

B.22 UPSMAN (Upsman.mib)

Traps from NetpowerView F. Refer to the NetpowerView F manual for details.

Table: UPSMAN trap (ENTERPRISE : enterprises.1356)

TRAP-TYPE/ Alarm type	Specific	Severity	Detailed Messages (%d: optional number %s: system variable)	Remarks
communicationLost UPS: Communication failure	1	CRITICAL	Communication with the UPS has been lost.	There is an error in communication between the agent and UPS.
upsOverload UPS: UPS overload	2	CRITICAL	The UPS has sensed a load greater than 100 percent of its rated capacity.	UPS output overload has occurred.
upsTurnedOff UPS: Switching off	3	MAJOR	The UPS is being switched off by a management station.	UPS output is switched off.
communicationEstablished UPS: Communication established	4	INFORMAT IONAL	Communication with the UPS has been established.	Communication between the agent and UPS has been re- established.

Table: UPSMAN trap (ENTERPRISE : enterprises.1356)

TRAP-TYPE/ Alarm type	Specific	Severity	Detailed Messages (%d: optional number %s: system variable)	Remarks
powerRestored UPS: power restored	5	INFORMATIONAL	Normal power has been restored to the UPS.	UPS power voltage has returned to within the specification range.
upsOnBattery UPS: On battery	6	MAJOR	The UPS system has switched to battery backup power.	UPS is running on backup power. This trap will be sent in the one minute period until the UPS has stopped or running on backup power is stopped.
testStarted UPS: Test started	7	INFORMATIONAL	UPS test has been started.	This signals the start of UPS test.
testCompleted UPS: Test completed	8	INFORMATIONAL	UPS test has been completed.	This signals the end of UPS test.
upsBatteryLow UPS: Battery Low	9	MAJOR	UPS Battery Low.	The battery capacity is low. See upsBatteryStatus. The repeat value depends on upsConfigIntervalTrapTime.
upsShutdownImminent UPS: Shutdown Imminent	10	INFORMATIONAL	UPS Shutdown Imminent.	Signals that there is one minute to server shutdown.
upsmanStarted UPS: UpsMan service started	11	INFORMATIONAL	UpsMan service started.	Start service.
upsmanTrapInputBad UPS: Abnormal input condition	12	MAJOR	Abnormal input condition	UPS power voltage is beyond the specification range.
upsmanTrapOutputOverloadRemoved UPS: Overload Removed	13	INFORMATIONAL	Overload Removed	UPS output overload has removed.
upsmanTrapBatteryBad UPS: Bad battery	14	MAJOR	Bad battery	Battery replacement necessary.
upsmanTrapTempBad UPS: Bad temperature	15	MAJOR	Bad temperature	Temperature is beyond the specification range. It is not necessary to identify the place where the temperature error occurred. See upsAlarmTempBadDetail for details about the content of temperature errors.
upsmanTrapTempBadRemoved UPS: Bad temperatureRemove	16	INFORMATIONAL	Bad temperatureRemove	Temperature has returned to within the specification range.

Table: UPSMAN trap (ENTERPRISE : enterprises.1356)

TRAP-TYPE/ Alarm type	Specific	Severity	Detailed Messages (%d: optional number %s: system variable)	Remarks
upsmanTrapFatalFault UPS: Fatal fault	17	CRITICAL	Fatal fault	UPS fatal fault occurred. This appears when a fatal fault that makes running on backup power impossible has occurred in the UPS.

B.23 UPS-MIB (RFC1628.mib)

Traps from NetpowerView F. Refer to the NetpowerView F manual for details.

Table: UPS-MIB Trap (ENTERPRISE : mib2.33.2)

TRAP-TYPE/ Alarm type	Specific	Severity	Detailed Messages (%d: optional number %s: system variable)	Remarks
upsTrapOnBattery UPS on Battery	1	CRITICAL	The UPS is on battery power since %d seconds	
upsTrapTestCompleted UPS Test Completed	2	INFORMAT IONAL	This trap is sent upon completion of a UPS diagnostic test.	
upsTrapAlarmEntryAdded UPS Alarm Entry Added	3	INFORMAT IONAL	This trap is sent each time an alarm is inserted into to the alarm table. It is sent on the insertion of all alarms except for upsAlarmOnBattery and upsAlarmTestInProgress.	
upsTrapAlarmEntryRemoved UPS Alarm Entry Removed	4	INFORMAT IONAL	This trap is sent each time an alarm is removed from the alarm table. It is sent on the removal of all alarms except for upsAlarmTestInProgress.	

B.24 PowerNet-MIB (powernet.mib)

Traps from APC UPS Web card. Refer to the APC UPS manual for details.

Table: PowerNet-MIB Trap (ENTERPRISE : enterprises.318)

TRAP-TYPE/ Alarm type	Specific	Severity	Detailed Messages (%d: optional number %s: system variable)	Remarks
communicationLost APC UPS: Communication lost	1	MAJOR	Communication lost between the agent and the UPS.	
upsOverload APC UPS: Overload	2	MAJOR	The UPS has sensed a load greater than 100 percent of its rated capacity.	
upsDiagnosticsFailed APC UPS: Failed self-test	3	MAJOR	The UPS has failed its internal self-test.	
upsDischarged APC UPS: batteries are discharged	4	MAJOR	The UPS batteries are discharged.	

Table: PowerNet-MIB Trap (ENTERPRISE : enterprises.318)

TRAP-TYPE/ Alarm type	Specific	Severity	Detailed Messages (%d: optional number %s: system variable)	Remarks
upsOnBattery APC UPS: On battery	5	WARNING	The UPS has switched to battery backup power.	
smartBoostOn APC UPS: SmartBoost(TM)	6	WARNING	The UPS has enabled SmartBoost(TM); low incoming line voltage.	
lowBattery APC UPS: Low battery	7	MAJOR	The UPS system's batteries are low and will soon be exhausted.	
communicationEstablished APC UPS: Communication established	8	INFORMATIONAL	UPS communication has been established.	
powerRestored APC UPS: Utility power restored	9	INFORMATIONAL	Returned from battery backup power; utility power restored.	
upsDiagnosticsPassed APC UPS: Passed self-test	10	INFORMATIONAL	The UPS passed internal self-test.	
returnFromLowBattery APC UPS: Returned from Low-Battery condition	11	INFORMATIONAL	The UPS has returned from a Low-Battery condition.	
upsTurnedOff APC UPS: Turned off	12	WARNING	The UPS has been switched off by a management station.	
upsSleeping APC UPS: Entered sleep mode	13	WARNING	The UPS entered sleep mode. Power to the load will be cut off.	
upsWokeUp APC UPS: Wake up	14	INFORMATIONAL	The UPS has returned from sleep mode. Power to the load has been restored.	
upsRebootStarted APC UPS: Starting reboot	15	WARNING	The UPS has started its reboot sequence.	
upsDipSwitchChanged APC UPS: DIP switch altered	16	WARNING	The DIP switch settings on the UPS have been changed.	
upsBatteryNeedsReplacement APC UPS: UPS batteries need replacement	17	MAJOR	The UPS batteries require immediate replacement.	
contactFault APC Environment: Contact fault	18	MAJOR	An Environment contact closure has faulted.	
contactFaultResolved APC Environment: Contact fault cleared.	19	INFORMATIONAL	A Environment contact closure has returned to it's default state.	
hardwareFailureBypass APC UPS: On bypass due to internal fault	20	MAJOR	The UPS is on bypass due to an internal fault.	
softwareBypass APC UPS: On bypass by user via software or panel	21	WARNING	UPS put on bypass by user via software or front UPS panel.	
switchedBypass APC UPS: On bypass initiated by user	22	WARNING	UPS put on bypass by user.	
returnFromBypass APC UPS: UPS has returned from bypass	23	INFORMATIONAL	The UPS has returned from bypass mode.	
bypassPowerSupplyFailure APC UPS: Base module bypass power supply needs repair	24	MAJOR	The base module bypass power supply needs repair.	

Table: PowerNet-MIB Trap (ENTERPRISE : enterprises.318)

TRAP-TYPE/ Alarm type	Specific	Severity	Detailed Messages (%d: optional number %s: system variable)	Remarks
baseFanFailure APC UPS: Base module fan needs repair	25	MAJOR	The base module fan needs repair.	
batteryPackCommLost APC UPS: Communication lost with battery packs	26	MAJOR	Communication lost with external battery packs, check battery signal cable.	
batteryPackCommEstablished APC UPS: Communication established with battery packs	27	INFORMAT IONAL	Communication established with external battery packs.	
calibrationStart APC UPS: Calibration initiated	28	INFORMAT IONAL	A battery run time calibration test has been initiated.	
restartAgent APC SNMP Agent: Agent restarting	29	INFORMAT IONAL	Agent restarting as commanded by manager.	
upsTurnedOn APC UPS: A UPS is turned on.	30	INFORMAT IONAL	A UPS is turned on.	
smartAvrReducing APC UPS: SmartTrim(TM) reducing	31	WARNING	The UPS has enabled SmartTrim(TM) voltage reduction.	
codeAuthenticationDone APC CODE: Authentication on agent code image is done.	32	INFORMAT IONAL	Authentication on agent code image is done.	
upsOverloadCleared APC UPS: Overload cleared.	33	INFORMAT IONAL	The overload condition has been cleared. .	
smartBoostOff APC UPS: SmartBoost(TM) off.	34	INFORMAT IONAL	The UPS has returned from SmartBoost(TM).	
smartAvrReducingOff APC UPS: SmartTrim(TM) reducing off	35	INFORMAT IONAL	The UPS has returned from SmartTrim(TM) voltage reduction.	
upsBatteryReplaced APC UPS: Bad battery replaced	36	INFORMAT IONAL	The UPS has returned from a bad battery fault.	
calibrationEnd APC UPS: Calibration end	37	INFORMAT IONAL	The UPS has finished calibrating	
dischargeCleared APC UPS: Discharge cleared.	38	INFORMAT IONAL	The UPS discharge condition has been cleared.	
gracefullShutdown APC UPS: A graceful shutdown has been initiated.	39	INFORMAT IONAL	A graceful shutdown has been initiated.	
outletOn APC PDU: Outlet has been turned on.	41	WARNING	Outlet has been turned on	
outletOff APC PDU: Outlet has turned off.	42	WARNING	Outlet has turned off.	
outletReboot APC PDU: Outlet has rebooted.	43	WARNING	Outlet has rebooted.	

Table: PowerNet-MIB Trap (ENTERPRISE : enterprises.318)

TRAP-TYPE/ Alarm type	Specific	Severity	Detailed Messages (%d: optional number %s: system variable)	Remarks
configChangeSNMP APC: The SNMP configuration has been changed.	44	WARNING	The SNMP configuration has been changed.	
configChangeOutlet APC PDU: Outlet configuration has been changed.	45	WARNING	Outlet configuration has been changed.	
accessViolationConsole APC: Access violation via the console.	46	WARNING	Three unsuccessful logins have been attempted via the console.	
accessViolationHTTP APC: Access violation via HTTP.	47	WARNING	An unsuccessful attempt to login via HTTP.	
passwordChange APC: Password change for the device.	48	WARNING	Someone has changed the password on the device.	
badVoltage APC UPS: Bad output voltage.	49	WARNING	The output voltage is not within acceptable range.	
badVoltageCleared APC UPS: The bad voltage output condition has been cleared.	50	INFORMATIONAL	The output voltage has returned to an acceptable level.	
chargerFailure APC UPS: The battery charger has failed.	51	WARNING	The battery charger has failed.	
chargerFailureCleared APC UPS: The battery charger failure condition cleared	52	INFORMATIONAL	The battery charger failure condition has been cleared.	
batteryOverTemperature APC UPS: The battery temperature threshold has been violated.	53	WARNING	The battery temperature threshold has been violated.	
batteryOverTemperatureCleared APC UPS: The battery over temperature has been cleared.	54	INFORMATIONAL	The battery over temperature has been cleared.	
smartRelayFault APC UPS: SmartBoost(TM) or SmartTrim(TM) relay fault.	55	WARNING	SmartBoost(TM) or SmartTrim(TM) relay fault.	
smartRelayFaultCleared APC UPS: SmartBoost(TM) or SmartTrim(TM) relay fault cleared.	56	INFORMATIONAL	SmartBoost(TM) or SmartTrim(TM) relay fault has been cleared.	
humidityThresholdViolation1 APC Environmental Monitor: Probe 1 humidity threshold violation	57	MAJOR	A humidity threshold has been violated on probe 1.	
humidityThresholdViolationCleared1 APC Environmental Monitor: Probe 1 humidity violation cleared	58	INFORMATIONAL	A humidity threshold violation has been cleared on probe 1.	

Table: PowerNet-MIB Trap (ENTERPRISE : enterprises.318)

TRAP-TYPE/ Alarm type	Specific	Severity	Detailed Messages (%d: optional number %s: system variable)	Remarks
temperatureThresholdViolation1 APC Environmental Monitor: Probe 1 temperature violation	59	MAJOR	A temperature threshold has been violated on probe 1.	
temperatureThresholdViolationCleared1 APC Environmental Monitor: Probe 1 temperature violation cleared	60	INFORMATIONAL	A temperature threshold violation has been cleared on probe 1.	
humidityThresholdViolation2 APC Environmental Monitor: Probe 2 humidity violation	61	MAJOR	A humidity threshold has been violated on probe 2.	
humidityThresholdViolationCleared2 APC Environmental Monitor: Probe 2 humidity violation cleared	62	INFORMATIONAL	A humidity threshold violation has been cleared on probe 2.	
temperatureThresholdViolation2 APC Environmental Monitor: Probe 2 temperature violation	63	MAJOR	A temperature threshold has been violated on probe 2.	
temperatureThresholdViolationCleared2 APC Environmental Monitor: Probe 2 temperature violation cleared	64	INFORMATIONAL	A temperature threshold violation has been cleared on probe 2.	
mupsCommunicationEstablished APC Environmental Monitor: Communication established	65	INFORMATIONAL	Communication established between the agent and the Environmental Monitor.	
mupsCommunicationLost APC Environmental Monitor: Communication failure	66	MAJOR	Communication lost between the agent and the Environmental Monitor.	
batteryIncrease APC UPS: The number of batteries has increased.	67	INFORMATIONAL	The number of batteries has increased.	
batteryDecrease APC UPS: The number of batteries has decreased.	68	INFORMATIONAL	The number of batteries has decreased.	
powerModuleIncrease APC UPS: The number of power modules has increased.	69	INFORMATIONAL	The number of power modules has increased.	
powerModuleDecrease APC UPS: The number of power modules has decreased.	70	INFORMATIONAL	The number of power modules has decreased.	
intelligenceModuleInserted APC UPS: An intelligence module has been inserted.	71	INFORMATIONAL	An intelligence module has been inserted.	
intelligenceModuleRemoved APC UPS: An intelligence module has been removed.	72	INFORMATIONAL	An intelligence module has been removed.	

Table: PowerNet-MIB Trap (ENTERPRISE : enterprises.318)

TRAP-TYPE/ Alarm type	Specific	Severity	Detailed Messages (%d: optional number %s: system variable)	Remarks
rintelligenceModuleInserted APC UPS: A redundant intelligence module has been inserted.	73	INFORMAT IONAL	A redundant intelligence module has been inserted.	
rintelligenceModuleRemoved APC UPS: A redundant intelligence module has been removed.	74	INFORMAT IONAL	A redundant intelligence module has been removed.	
extBatteryFrameIncease APC UPS: An external battery frame has been added.	75	INFORMAT IONAL	An external battery frame has been added.	
extBatteryFrameDecrease APC UPS: An external battery frame has been removed.	76	INFORMAT IONAL	An external battery frame has been removed.	
abnormalCondition APC: An abnormal condition has been detected.	77	MAJOR	An abnormal condition has been detected.	
abnormalConditionCleared APC: An abnormal condition has been cleared.	78	INFORMAT IONAL	An abnormal condition has been cleared.	
deviceStatusChange APC : The status of the device being monitored has changed.	79	INFORMAT IONAL	The status of the device being monitored has changed.	
noBatteries APC UPS: No batteries attached.	80	WARNING	The UPS has no batteries attached.	
noBatteriesCleared APC UPS: The no batteries attached condition has been cleared.	81	INFORMAT IONAL	The UPS's batteries have been attached.	
userAdded APC: A new user has been added.	82	INFORMAT IONAL	A new user has been added.	
userDeleted APC: A user has been deleted.	83	INFORMAT IONAL	A user has been deleted.	
userModified APC: A user has been modified.	84	INFORMAT IONAL	A user has been modified.	
msvmCommunicationEstablis hed APC: Communications established with the MasterSwitch VM.	85	INFORMAT IONAL	Communications with the MasterSwitch VM has been established.	
msvmCommunicationLost APC: Communications lost with the MasterSwitch VM.	86	MAJOR	Communications with the MasterSwitch VM has been lost.	
msvmOverload APC: The MasterSwitch VM is near or at an overload condition.	87	MAJOR	The MasterSwitch VM is near or at an overload condition.	

Table: PowerNet-MIB Trap (ENTERPRISE : enterprises.318)

TRAP-TYPE/ Alarm type	Specific	Severity	Detailed Messages (%d: optional number %s: system variable)	Remarks
msvmOverloadCleared APC: The overload condition cleared on the MasterSwitch VM.	88	INFORMAT IONAL	The overload condition on the MasterSwitch VM has been cleared.	
msvmOutletOn APC: An outlet on the MasterSwitch VM has turned on.	89	INFORMAT IONAL	An outlet on the MasterSwitch VM has turned on.	
msvmOutletOff APC: An outlet on the MasterSwitch VM has turned off.	90	INFORMAT IONAL	An outlet on the MasterSwitch VM has turned off.	
msvmDeviceConfigChange APC: A device configuration change on a MasterSwitch VM.	91	INFORMAT IONAL	A device configuration change has been made on a MasterSwitch VM.	
msvmOutletConfigChange APC: An outlet configuration change on a MasterSwitch VM.	92	INFORMAT IONAL	An outlet configuration change has been made on a MasterSwitch VM.	
msvmLowLoad APC: The MasterSwitch VM has violated the low load threshold.	93	INFORMAT IONAL	The MasterSwitch VM has violated the low load threshold.	
msvmLowLoadCleared APC: The low load condition cleared on the MasterSwitch VM.	94	INFORMAT IONAL	The low load condition on the MasterSwitch VM has been cleared.	
msvmNearOverload APC: The MasterSwitch VM is near or at an overload condition.	95	MAJOR	The MasterSwitch VM is near or at an overload condition.	
msvmNearOverloadCleared APC: The overload condition cleared on the MasterSwitch VM.	96	INFORMAT IONAL	The overload condition on the MasterSwitch VM has been cleared.	
msvmPowerSupplyStatusCha nge APC: The power supply status changed on MasterSwitch VM	97	WARNING	The power supply status of the MasterSwitch VM has changed.	
mspCommunicationEstablished APC: Communications established with the MasterSwitch plus.	98	INFORMAT IONAL	Communications with the MasterSwitch plus has been established.	
mspCommunicationLost APC: Communications lost with the MasterSwitch plus.	99	MAJOR	Communications with the MasterSwitch plus has been lost.	
mspOutletOn APC: An outlet on the MasterSwitch plus has turned on.	100	INFORMAT IONAL	An outlet on the MasterSwitch plus has turned on.	

Table: PowerNet-MIB Trap (ENTERPRISE : enterprises.318)

TRAP-TYPE/ Alarm type	Specific	Severity	Detailed Messages (%d: optional number %s: system variable)	Remarks
mSPOutletOff APC: An outlet on the MasterSwitch plus has turned off.	101	INFORMAT IONAL	An outlet on the MasterSwitch plus has turned off.	
mSPDeviceConfigChange APC: A device configuration change on a MasterSwitch plus.	102	INFORMAT IONAL	A device configuration change has been made on a MasterSwitch plus.	
mSPOutletConfigChange APC: An outlet configuration change on a MasterSwitch plus.	103	INFORMAT IONAL	An outlet configuration change has been made on a MasterSwitch plus.	
rsSourceSwitched APC Redundant Switch: The Redundant Switch has switched source	104	INFORMAT IONAL	The Redundant Switch has switched source.	
rsLostRedundancy APC Redundant Switch: The Redundant Switch has lost redundancy	105	MAJOR	The Redundant Switch has has lost redundancy.	
rsRedundancyRestored APC Redundant Switch: Redundancy has been restored.	106	INFORMAT IONAL	Redundancy has been restored to the Redundant Switch .	
rsConfigChange APC: A configuration change on a Redundant Switch.	107	INFORMAT IONAL	A configuration change has been made on a Redundant Switch.	
rsCommunicationEstablished APC: Communications established with the Redundant Switch.	108	INFORMAT IONAL	Communications with the Redundant Switch has been established.	
rsCommunicationLost APC: Communications lost with the Redundant Switch.	109	MAJOR	Communications with the Redundant Switch has been lost.	
dcCommunicationEstablished APC: Communications established with the DC power plant.	110	INFORMAT IONAL	Communications with the DC power plant has been established.	
dcCommunicationLost APC: Communications lost with the DC power plant.	111	MAJOR	Communications with the DC power plant has been lost.	
dcPINChanged APC: The active PIN on the DC controller has been changed.	112	INFORMAT IONAL	The active PIN on the DC controller has been changed.	
dcMajorAlarm APC: A Major alarm is active in the DC power plant.	113	MAJOR	A Major alarm is active in the DC power plant.	
dcMajorAlarmCleared APC: A Major alarm is no longer active in the DC power plant.	114	INFORMAT IONAL	A Major alarm is no longer active in the DC power plant.	

Table: PowerNet-MIB Trap (ENTERPRISE : enterprises.318)

TRAP-TYPE/ Alarm type	Specific	Severity	Detailed Messages (%d: optional number %s: system variable)	Remarks
dcMinorAlarm APC: A Minor alarm is active in the DC power plant.	115	WARNING	A Minor alarm is active in the DC power plant.	
dcMinorAlarmCleared APC: A Minor alarm is no longer active in the DC power plant.	116	INFORMATIONAL	A Minor alarm is no longer active in the DC power plant.	
dcOutputRelayOn APC: An output relay has gone on.	117	WARNING	An output relay has gone on in the DC power plant.	
dcOutputRelayOff APC: An output relay has gone off.	118	INFORMATIONAL	An output relay has gone off in the DC power plant.	
dcInputRelayOn APC: An input relay has gone on.	119	WARNING	An input relay has gone on in the DC power plant.	
dcInputRelayOff APC: An input relay has gone off.	120	INFORMATIONAL	An input relay has gone off in the DC power plant.	
logicPowerSuppliesIncreased APC UPS: The number of system power supplies has increased.	121	INFORMATIONAL	The number of system power supplies has increased.	
logicPowerSuppliesDecreased APC UPS: The number of system power supplies has decreased.	122	INFORMATIONAL	The number of system power supplies has decreased.	
externalSwitchGearClosed APC UPS: External Switch Gear closed.	123	INFORMATIONAL	External Switch Gear closed.	
externalSwitchGearOpened APC UPS: External Switch Gear opened.	124	INFORMATIONAL	External Switch Gear opened.	
generalDeviceEvent APC Device event	125	INFORMATIONAL	APC Device event.	
atsSourceSwitched APC Automatic Transfer Switch: The ATS has switched source	126	INFORMATIONAL	The Automatic Transfer Switch has switched source.	
atsLostRedundancy APC Automatic Transfer Switch: The ATS has lost redundancy.	127	MAJOR	The Automatic Transfer Switch has lost redundancy.	
atsRedundancyRestored APC Automatic Transfer Switch: Redundancy has been restored.	128	INFORMATIONAL	Redundancy has been restored to the Automatic Transfer Switch .	
atsConfigChange APC Automatic Transfer Switch: ATS configuration changed.	129	INFORMATIONAL	A configuration change has been made on a Automatic Transfer Switch.	

Table: PowerNet-MIB Trap (ENTERPRISE : enterprises.318)

TRAP-TYPE/ Alarm type	Specific	Severity	Detailed Messages (%d: optional number %s: system variable)	Remarks
atsCommunicationEstablished APC Automatic Transfer Switch: Communications established.	130	INFORMATIONAL	Communications with the Automatic Transfer Switch has been established.	
atsCommunicationLost APC Automatic Transfer Switch: Communications lost.	131	MAJOR	Communications with the Automatic Transfer Switch has been lost.	
atsOverCurrent APC Automatic Transfer Switch: Output Current exceeded threshold	132	MAJOR	Output Current has exceeded Threshold.	
atsOverCurrentCleared APC Automatic Transfer Switch: Output Current below threshold.	133	INFORMATIONAL	Output Current has returned below threshold.	
atsPowerSupplyFailure APC Automatic Transfer Switch: The ATS Power Supply has failed.	134	MAJOR	The Automatic Transfer Switch Power Supply has failed.	
atsPowerSupplyFailureCleared APC Automatic Transfer Switch: Power Supply Failure Cleared.	135	INFORMATIONAL	The Automatic Transfer Switch Power Supply Failure Cleared.	
dcMainsFailAlarm APC: A Mains Fail alarm is active in the DC power plant.	136	WARNING	A Mains Fail alarm is active in the DC power plant.	
dcMainsFailAlarmCleared APC: Mains Fail alarm is no longer active in the DC power plant.	137	INFORMATIONAL	Mains Fail alarm is no longer active in the DC power plant.	
dcFanFailAlarm APC: A Fan Fail alarm is active in the DC power plant.	138	WARNING	A Fan Fail alarm is active in the DC power plant.	
dcFanFailAlarmCleared APC: A Fan Fail alarm is no longer active in the DC power plant.	139	INFORMATIONAL	A Fan Fail alarm is no longer active in the DC power plant.	
dcRectifierOvertempAlarm APC: Rect. Overtemp alarm is active in the power plant.	140	WARNING	Rect. Overtemp alarm is active in the power plant.	
dcRectifierOvertempAlarmCleared APC: Rect. Overtemp alarm is no longer active in the power plant.	141	INFORMATIONAL	Rect. Overtemp alarm is no longer active in the power plant.	
dcCurrentLimitAlarm APC: A Current Limit alarm is active in the power plant.	142	WARNING	A Current Limit alarm is active in the power plant.	
dcCurrentLimitAlarmCleared APC: Current Limit alarm is no longer active in the power plant.	143	INFORMATIONAL	Current Limit alarm is no longer active in the power plant.	

Table: PowerNet-MIB Trap (ENTERPRISE : enterprises.318)

TRAP-TYPE/ Alarm type	Specific	Severity	Detailed Messages (%d: optional number %s: system variable)	Remarks
dcRectifierFailAlarm APC: A Rect. Fail alarm is active in the power plant.	144	WARNING	A Rect. Fail alarm is active in the power plant.	
dcRectifierFailAlarmCleared APC: Rect. Fail alarm is no longer active in the power plant.	145	INFORMATIONAL	Rect. Fail alarm is no longer active in the power plant.	
dcMultRectFailAlarm APC: Multiple Rect. Fail alarm is active in the powerplant.	146	WARNING	Multiple Rect. Fail alarm is active in the powerplant.	
dcMultRectFailAlarmCleared APC: Mult Rect Fail alarm is no longer active in the powerplant.	147	INFORMATIONAL	Mult Rect Fail alarm is no longer active in the powerplant.	
dcBatteryBreakerAlarm APC: Batt. Breaker alarm is active in the power plant.	148	WARNING	Batt. Breaker alarm is active in the power plant.	
dcBatteryBreakerAlarmCleared APC: Batt. Breaker alarm is no longer active in the power plant.	149	INFORMATIONAL	Batt. Breaker alarm is no longer active in the power plant.	
dcRectifierOVPAAlarm APC: A Rect. OVP alarm is active in the power plant.	150	WARNING	A Rect. OVP alarm is active in the power plant.	
dcRectifierOVPAAlarmCleared APC: A Rect. OVP alarm is no longer active in the power plant.	151	INFORMATIONAL	A Rect. OVP alarm is no longer active in the power plant.	
dcLVDImminentAlarm APC: A LVD Imminent alarm is active in the powerplant.	152	WARNING	A LVD Imminent alarm is active in the powerplant.	
dcLVDImminentAlarmCleared APC: A LVD Imminent alarm is no longer active in the powerplant.	153	INFORMATIONAL	A LVD Imminent alarm is no longer active in the powerplant.	
dcFuseCBAAlarm APC: A Fuse/CB alarm is active in the DC power plant.	154	WARNING	A Fuse/CB alarm is active in the DC power plant.	
dcFuseCBAAlarmCleared APC: A Fuse/CB alarm is no longer active in the DC power plant.	155	INFORMATIONAL	A Fuse/CB alarm is no longer active in the DC power plant.	
dcBatteryTestFail APC: A Battery Test failed in the DC power plant.	156	WARNING	A Battery Test failed in the DC power plant.	
dcTemperatureAlarm APC: A Temperature alarm is active in the power plant.	157	WARNING	A Temperature alarm is active in the power plant.	
dcTemperatureAlarmCleared APC: A Temperature alarm is no longer active in the power plant.	158	INFORMATIONAL	A Temperature alarm is no longer active in the power plant.	

Table: PowerNet-MIB Trap (ENTERPRISE : enterprises.318)

TRAP-TYPE/ Alarm type	Specific	Severity	Detailed Messages (%d: optional number %s: system variable)	Remarks
dcHumidityAlarm APC: A Humidity alarm is active in the DC power plant.	159	WARNING	A Humidity alarm is active in the DC power plant.	
dcHumidityAlarmCleared APC: A Humidity alarm is no longer active in the DC power plant.	160	INFORMATIONAL	A Humidity alarm is no longer active in the DC power plant.	
dcBBCommunicationEstablished APC: Power plant bridging board communications established.	161	INFORMATIONAL	Power plant bridging board communications established.	
dcBBCommunicationLost APC: Power plant bridging board communications lost.	162	MAJOR	Power plant bridging board communications lost.	
iemHighTempThresholdViolation APC IEM: High temperature threshold violation.	163	MAJOR	High temperature threshold violation.	
iemHighTempThresholdViolationCleared APC IEM: High temperature threshold violation cleared.	164	INFORMATIONAL	High temperature threshold violation has been cleared.	
iemLowTempThresholdViolation APC IEM: Low temperature threshold violation.	165	MAJOR	Low temperature threshold violation.	
iemLowTempThresholdViolationCleared APC IEM: Low temperature threshold violation cleared.	166	INFORMATIONAL	Low temperature threshold violation has been cleared.	
iemHighHumidThresholdViolation APC IEM: High humidity threshold violation.	167	MAJOR	High humidity threshold violation.	
iemHighHumidThresholdViolationCleared APC IEM: High humidity threshold violation cleared.	168	INFORMATIONAL	High humidity threshold violation has been cleared.	
iemLowHumidThresholdViolation APC IEM: Low humidity threshold violation.	169	MAJOR	Low humidity threshold violation.	
iemLowHumidThresholdViolationCleared APC IEM: Low humidity threshold violation cleared.	170	INFORMATIONAL	Low humidity threshold violation has been cleared.	
iemProbeDisconnected APC IEM: Probe disconnected.	171	WARNING	Probe has been disconnected.	
iemProbeConnected APC IEM: Probe Connected.	172	INFORMATIONAL	Probe has been connected.	
iemContactFault APC IEM: Contact fault.	173	MAJOR	Contact fault.	

Table: PowerNet-MIB Trap (ENTERPRISE : enterprises.318)

TRAP-TYPE/ Alarm type	Specific	Severity	Detailed Messages (%d: optional number %s: system variable)	Remarks
iemContactFaultCleared APC IEM: Contact fault.	174	INFORMAT IONAL	Contact fault cleared.	
iemRelayFault APC IEM: Output relay fault.	175	MAJOR	Output relay has faulted.	
iemRelayFaultCleared APC IEM: Output relay fault condition cleared.	176	INFORMAT IONAL	Output relay fault cleared.	
bmBatManCommEstab BatMan : Communications Established.	177	INFORMAT IONAL	Communications Established.	
bmBatManCommLost BatMan : Communications Lost.	178	MAJOR	Communications Lost.	
bmBatManKneeAlarm BatMan : Knee Alarm Detected.	179	MAJOR	Knee Alarm Detected.	
bmBatManKneeAlarmCleared BatMan : Knee Alarm Cleared.	180	INFORMAT IONAL	Knee Alarm Cleared.	
bmBatManChargerAlarm BatMan : Charger Alarm Detected.	181	WARNING	Charger Alarm Detected.	
bmBatManChargerAlarmClea red BatMan : Charger Alarm Cleared.	182	INFORMAT IONAL	Charger Alarm Cleared.	
bmBatManBatteryAlarm BatMan : Battery Alarm Detected.	183	WARNING	Battery Alarm Detected.	
bmBatManBatteryAlarmClear ed BatMan : Battery Alarm Cleared.	184	INFORMAT IONAL	Battery Alarm Cleared.	
bmBatManEnvironmentAlarm BatMan : Environment Alarm Detected.	185	WARNING	Environment Alarm Detected.	
bmBatManEnvironmentAlarm Cleared BatMan : Environment Alarm Cleared.	186	INFORMAT IONAL	Environment Alarm Cleared.	
bmBatManMaintenanceAlarm BatMan : Maintenance Due Alarm Detected.	187	INFORMAT IONAL	Maintenance Due Alarm Detected.	
bmBatManMaintenanceAlarm Cleared BatMan : Maintenance Due Alarm Cleared.	188	INFORMAT IONAL	Maintenance Due Alarm Cleared.	
pduCommunicationEstablished APC PDU: Communication Established.	189	INFORMAT IONAL	Communication Established.	
pduCommunicationLost APC PDU: Communication Lost.	190	MAJOR	Communication Lost.	

Table: PowerNet-MIB Trap (ENTERPRISE : enterprises.318)

TRAP-TYPE/ Alarm type	Specific	Severity	Detailed Messages (%d: optional number %s: system variable)	Remarks
pduUtilityLineUndervoltage APC PDU: Utility Line Undervoltage.	191	MAJOR	Utility Line Undervoltage.	
pduUtilityLineUndervoltageCleared APC PDU: Utility Line Undervoltage Cleared.	192	INFORMATIONAL	Utility Line Undervoltage Cleared.	
pduUtilityLineOvervoltage APC PDU: Utility Line Overvoltage.	193	MAJOR	Utility Line Overvoltage.	
pduUtilityLineOvervoltageCleared APC PDU: Utility Line Overvoltage Cleared.	194	INFORMATIONAL	Utility Line Overvoltage Cleared.	
pduGroundOvercurrent APC PDU: Ground Overcurrent.	195	MAJOR	Ground Overcurrent.	
pduGroundOvercurrentCleared APC PDU: Ground Overcurrent Cleared.	196	INFORMATIONAL	Ground Overcurrent Cleared.	
pduCircuitPanelInputUndervoltage APC PDU: Circuit Panel Input Undervoltage.	197	MAJOR	Circuit Panel Input Undervoltage.	
pduCircuitPanelInputUndervoltageCleared APC PDU: Circuit Panel Input Undervoltage Cleared.	198	INFORMATIONAL	Circuit Panel Input Undervoltage Cleared.	
pduCircuitPanelInputOvervoltage APC PDU: Circuit Panel Input Overvoltage.	199	MAJOR	Circuit Panel Input Overvoltage.	
pduCircuitPanelInputOvervoltageCleared APC PDU: Circuit Panel Input Overvoltage Cleared.	200	INFORMATIONAL	Circuit Panel Input Overvoltage Cleared.	
pduCircuitPanelInputUndercurrent APC PDU: Circuit Panel Input Undercurrent.	201	MAJOR	Circuit Panel Input Undercurrent.	
pduCircuitPanelInputUndercurrentCleared APC PDU: Circuit Panel Input Undercurrent Cleared.	202	INFORMATIONAL	Circuit Panel Input Undercurrent Cleared.	
pduCircuitPanelInputOvercurrent APC PDU: Circuit Panel Input Overcurrent.	203	MAJOR	Circuit Panel Input Overcurrent.	
pduCircuitPanelInputOvercurrentCleared APC PDU: Circuit Panel Input Overcurrent Cleared.	204	INFORMATIONAL	Circuit Panel Input Overcurrent Cleared.	

Table: PowerNet-MIB Trap (ENTERPRISE : enterprises.318)

TRAP-TYPE/ Alarm type	Specific	Severity	Detailed Messages (%d: optional number %s: system variable)	Remarks
pduCircuitPanelFrequencyOut OfRange APC PDU: Circuit Panel Input Frequency Out Of Range.	205	MAJOR	Circuit Panel Input Frequency Out Of Range.	
pduCircuitPanelFrequencyOut ofRangeCleared APC PDU: Circuit Panel Input Frequency No Longer Out Of Range.	206	INFORMAT IONAL	Circuit Panel Input Frequency No Longer Out Of Range.	
pduCircuitPanelNeutralOverc urrent APC PDU: Circuit Panel Input Neutral Overcurrent.	207	MAJOR	Circuit Panel Input Neutral Overcurrent.	
pduCircuitPanelNeutralOverc urrentCleared APC PDU: Circuit Panel Input Neutral Overcurrent Cleared.	208	INFORMAT IONAL	Circuit Panel Input Neutral Overcurrent Cleared.	
pduSystemOff APC PDU: System Off.	209	MAJOR	PDU System Off.	
pduOnBatteryMode APC PDU: On Battery Mode.	210	MAJOR	PDU is in On Battery Mode.	
pduMaintenanceBypassMode APC PDU: Maintenance Bypass Mode.	211	INFORMAT IONAL	PDU is in Maintenance Bypass Mode.	
pduAtypicalBypassMode APC PDU: Atypical Bypass Mode.	212	WARNING	PDU is in Atypical Bypass Mode.	
pduNoPanelFeedMode APC PDU: No Panel Feed Mode.	213	MAJOR	PDU is in No Panel Feed Mode.	
pduUpsOperationMode APC PDU: Ups Operation Mode.	214	INFORMAT IONAL	PDU is in Ups Operation Mode.	
pduForcedBypassMode APC PDU: Forced Bypass Mode.	215	WARNING	PDU is in Forced Bypass Mode.	
pduInputTransformerOverTem perature APC PDU: Input Transformer Over Temperature.	216	MAJOR	Input Transformer Over Temperature.	
pduInputTransformerOverTem peratureCleared APC PDU: Input Transformer Over Temperature Cleared.	217	INFORMAT IONAL	Input Transformer Over Temperature Cleared.	
pduUPSInputVoltageLost APC PDU: UPS Input Voltage phase-N Lost.	218	MAJOR	UPS Input Voltage phase-N Lost.	
pduUPSInputVoltageRestored APC PDU: UPS Input Voltage phase-N Restored.	219	INFORMAT IONAL	UPS Input Voltage phase-N Restored.	
pduContactFault APC PDU: Contact Abnormal.	220	MAJOR	Contact Abnormal.	

Table: PowerNet-MIB Trap (ENTERPRISE : enterprises.318)

TRAP-TYPE/ Alarm type	Specific	Severity	Detailed Messages (%d: optional number %s: system variable)	Remarks
pduContactFaultCleared APC PDU: Contact Normal.	221	INFORMAT IONAL	Contact Normal.	
rmPDUUndercurrent APC RM PDU: Undercurrent.	222	MAJOR	Undercurrent.	
rmPDUUndercurrentCleared APC RM PDU: Undercurrent Cleared.	223	INFORMAT IONAL	Undercurrent Cleared.	
rmPDUOvercurrent APC RM PDU: Overcurrent.	224	MAJOR	Overcurrent.	
rmPDUOvercurrentCleared APC RM PDU: Overcurrent Cleared.	225	INFORMAT IONAL	Overcurrent Cleared.	
rmPDUOverload APC RM PDU: Overload.	226	MAJOR	Overload.	
rmPDUOverloadCleared APC RM PDU: Overload Cleared.	227	INFORMAT IONAL	Overload Cleared.	
rmPDUCommunicationEstabli shed APC RM PDU: Communication Established.	228	INFORMAT IONAL	Communication Established.	
rmPDUCommunicationLost APC RM PDU: Communication Lost.	229	MAJOR	Communication Lost.	
emsCommunicationEstablishe dAPC EMS: Communication Established.	230	INFORMAT IONAL	Communication Established.	
emsCommunicationLost APC EMS: Communication Lost.	231	MAJOR	Communication Lost.	
emsProbeConnected APC EMS: Probe Connected.	232	INFORMAT IONAL	Probe Connected.	
emsProbeDisconnected APC EMS: Probe Disconnected.	233	MAJOR	Probe Disconnected.	
emsSensorConnected APC EMS: Sensor Connected.	234	INFORMAT IONAL	Sensor Connected.	
emsSensorDisconnected APC EMS: Sensor Disconnected.	235	MAJOR	Sensor Disconnected.	
emsSensorFault APC EMS: Sensor Fault.	236	MAJOR	Sensor Fault.	
emsSensorFaultCleared APC EMS: Sensor Fault Cleared.	237	INFORMAT IONAL	Sensor Fault Cleared.	
emsBeaconConnected APC EMS: Beacon Connected.	238	INFORMAT IONAL	Beacon Connected.	
emsBeaconDisconnected APC EMS: Beacon Disconnected.	239	MAJOR	Beacon Disconnected.	

Table: PowerNet-MIB Trap (ENTERPRISE : enterprises.318)

TRAP-TYPE/ Alarm type	Specific	Severity	Detailed Messages (%d: optional number %s: system variable)	Remarks
emsBeaconOn APC EMS: Beacon On.	240	INFORMAT IONAL	Beacon On.	
emsBeaconOff APC EMS: Beacon Off.	241	INFORMAT IONAL	Beacon Off.	
emsMajorAlarm APC EMS: Major Alarm.	242	MAJOR	Major Alarm.	
emsMajorAlarmCleared APC EMS: Major Alarm Cleared.	243	INFORMAT IONAL	Major Alarm Cleared.	
emsMinorAlarm APC EMS: Minor Alarm.	244	MAJOR	Minor Alarm.	
emsMinorAlarmCleared APC EMS: Minor Alarm Cleared.	245	INFORMAT IONAL	Minor Alarm Cleared.	
emsOutletStateAbnormal APC EMS: Outlet has changed to its abnormal state.	246	WARNING	Outlet has changed to its abnormal state.	
emsOutletStateNormal APC EMS: Outlet has changed to its normal state.	247	INFORMAT IONAL	Outlet has changed to its normal state.	
emsInputContactStateAbnorm al APC EMS: Input contact has changed to its abnormal state.	248	WARNING	Input contact has changed to its abnormal state.	
emsInputContactStateNormal APC EMS: Input contact has changed to its normal state.	249	INFORMAT IONAL	Input contact has changed to its normal state.	
emsOutputRelayStateAbnorm al APC EMS: Output Relay has changed to its abnormal state.	250	WARNING	Output Relay has changed to its abnormal state.	
emsOutputRelayStateNormal APC EMS: Output Relay has changed to its normal state.	251	INFORMAT IONAL	Output Relay has changed to its normal state.	
emsDeviceConfigChange APC: A device configuration change on a EMS.	252	INFORMAT IONAL	A device configuration change has been made on a EMS.	
envHighTempThresholdViolati on APC ENV: High temperature threshold violation.	253	MAJOR	High temperature threshold violation.	
envHighTempThresholdViolati onCleared APC ENV: High temperature threshold violation cleared.	254	INFORMAT IONAL	High temperature threshold violation cleared.	
envLowTempThresholdViolati on APC ENV: Low temperature threshold violation.	255	MAJOR	Low temperature threshold violation.	
envLowTempThresholdViolati onCleared APC ENV: Low temperature threshold violation cleared.	256	INFORMAT IONAL	Low temperature threshold violation cleared.	

Table: PowerNet-MIB Trap (ENTERPRISE : enterprises.318)

TRAP-TYPE/ Alarm type	Specific	Severity	Detailed Messages (%d: optional number %s: system variable)	Remarks
envHighHumidityThresholdViolation APC ENV: High humidity threshold violation.	257	MAJOR	High humidity threshold violation.	
envHighHumidityThresholdViolationCleared APC ENV: High humidity threshold violation cleared.	258	INFORMATIONAL	High humidity threshold violation cleared.	
envLowHumidityThresholdViolation APC ENV: Low humidity threshold violation.	259	MAJOR	Low humidity threshold violation.	
envLowHumidityThresholdViolationCleared APC ENV: Low humidity threshold violation cleared.	260	INFORMATIONAL	Low humidity threshold violation cleared.	
rPDUCommunicationEstablished APC Rack PDU: Communication established.	266	INFORMATIONAL	Communication with a Rack PDU established.	
rPDUCommunicationLost APC Rack PDU: Communication lost.	267	MAJOR	Communication with a Rack PDU has been lost.	
rPDUOutletOn APC Switched Rack PDU: An outlet has turned on.	268	INFORMATIONAL	An outlet on a Switched Rack PDU has turned on.	
rPDUOutletOff APC Switched Rack PDU: An outlet has turned off.	269	INFORMATIONAL	An outlet on a Switched Rack PDU has turned off.	
rPDUDeviceConfigChange APC Rack PDU: Device configuration change made.	270	INFORMATIONAL	Device configuration change has been made on a Rack PDU.	
rPDUOutletConfigChange APC Switched Rack PDU: Outlet configuration change made.	271	INFORMATIONAL	Outlet configuration change has been made on a Switched Rack PDU.	
rPDULowLoad APC Rack PDU: Violation of low load threshold.	272	WARNING	A Rack PDU has violated the low load threshold.	
rPDULowLoadCleared APC Rack PDU: Low load condition cleared.	273	INFORMATIONAL	The low load condition on a Rack PDU has been cleared.	
rPDUNearOverload APC Rack PDU: Near an overload condition.	274	WARNING	A Rack PDU is near an overload condition.	
rPDUNearOverloadCleared APC Rack PDU: Near overload condition has cleared.	275	INFORMATIONAL	Rack PDU near overload condition has cleared.	
rPDUOverload APC Rack PDU: Overload condition.	276	MAJOR	A Rack PDU is in an overload condition.	

Table: PowerNet-MIB Trap (ENTERPRISE : enterprises.318)

TRAP-TYPE/ Alarm type	Specific	Severity	Detailed Messages (%d: optional number %s: system variable)	Remarks
rPDUOverloadCleared APC Rack PDU: Overload condition has cleared.	277	INFORMAT IONAL	The overload condition on a Rack PDU has cleared.	
rPDUPowerSupply1Fail APC Rack PDU: Power Supply 1 is in FAIL state.	278	MAJOR	Power Supply 1 on Rack PDU is in FAIL state.	
rPDUPowerSupply1Ok APC Rack PDU: Power Supply 1 is operating normally.	279	INFORMAT IONAL	Power Supply 1 on Rack PDU is operating normally.	
rPDUPowerSupply2Fail APC Rack PDU: Power Supply 2 is in FAIL state.	280	MAJOR	Power Supply 2 on Rack PDU is in FAIL state.	
rPDUPowerSupply2Ok APC Rack PDU: Power Supply 2 is operating normally.	281	INFORMAT IONAL	Power Supply 2 on Rack PDU is operating normally.	
rPDUPhaseConfigChange APC Rack PDU: Phase configuration change made.	282	INFORMAT IONAL	Phase configuration change has been made on a Rack PDU.	
rPDUCancelPendingCommand APC Switched Rack PDU: Cancel Pending Command made.	283	INFORMAT IONAL	A Cancel Pending Command has been made on a Switched Rack PDU.	
aruAlinkCommunicationEstab lished APC ARU: Communication Established.	284	INFORMAT IONAL	Communication Established.	
aruAlinkCommunicationLost APC ARU: Communication Lost.	285	MAJOR	Communication Lost.	
aruFanFail APC ARU: Fan Fail.	286	MAJOR	Fan Fail.	
aruFanFailCleared APC ARU: Fan Fail Cleared.	287	INFORMAT IONAL	Fan Fail Cleared.	
aruSmokeAlarm APC ARU: Smoke Alarm.	288	MAJOR	Smoke Alarm.	
aruSmokeAlarmCleared APC ARU: Smoke Alarm Cleared.	289	INFORMAT IONAL	Smoke Alarm Cleared.	
aruHighTemperatureAlarm APC ARU: High Temperature Alarm.	290	MAJOR	High Temperature Alarm.	
aruHighTemperatureAlarmCle ared APC ARU: High Temperature Alarm Cleared.	291	INFORMAT IONAL	High Temperature Alarm Cleared.	
aruExhaustTemperatureAlarm APC ARU: Exhaust Temperature Alarm.	292	MAJOR	Exhaust Temperature Alarm.	

Table: PowerNet-MIB Trap (ENTERPRISE : enterprises.318)

TRAP-TYPE/ Alarm type	Specific	Severity	Detailed Messages (%d: optional number %s: system variable)	Remarks
aruExhaustTemperatureAlarm Cleared APC ARU: Exhaust Temperature Alarm Cleared.	293	INFORMAT IONAL	Exhaust Temperature Alarm Cleared.	
envAlinkCommunicationEsta blished APC ENV: Communication Established.	294	INFORMAT IONAL	Communication Established.	
envAlinkCommunicationLost APC ENV: Communication Lost.	295	MAJOR	Communication Lost.	
emsAlinkPowerOverload APC EMS: Alink Power Overload.	296	MAJOR	Alink Power Overload.	
emsAlinkPowerOverloadClear ed APC EMS: Alink Power Overload Cleared.	297	INFORMAT IONAL	Alink Power Overload Cleared.	
upsOutletGroupTurnedOn APC UPS: Outlet Group turned on.	298	INFORMAT IONAL	Outlet Group turned on	
upsOutletGroupTurnedOff APC UPS: Outlet Group turned off.	299	WARNING	Outlet Group turned off.	
smwCriticalCondition APC Symmetra MW UPS: A critical condition has been detected.	300	MAJOR	A critical condition has been detected.	
smwCriticalConditionCleared APC Symmetra MW UPS: A critical condition has been cleared.	301	INFORMAT IONAL	A critical condition has been cleared.	
smwWarningCondition APC Symmetra MW UPS: A warning condition has been detected.	302	WARNING	A warning condition has been detected.	
smwWarningConditionCleared APC Symmetra MW UPS: A warning condition has been cleared.	303	INFORMAT IONAL	A warning condition has been cleared.	
smwInformationalCondition APC Symmetra MW UPS: Informational condition detected.	304	INFORMAT IONAL	An informational condition has been detected.	
smwInformationalConditionCl eared APC Symmetra MW UPS: Informational condition cleared.	305	INFORMAT IONAL	An informational condition has been cleared.	
airCriticalCondition APC Air: A critical condition was detected.	306	MAJOR	A critical condition was detected.	

Table: PowerNet-MIB Trap (ENTERPRISE : enterprises.318)

TRAP-TYPE/ Alarm type	Specific	Severity	Detailed Messages (%d: optional number %s: system variable)	Remarks
airCriticalConditionCleared APC Air: A critical condition was cleared.	307	INFORMAT IONAL	A critical condition was cleared.	
airWarningCondition APC Air: A warning condition was detected.	308	WARNING	A warning condition was detected.	
airWarningConditionCleared APC Air: A warning condition was cleared.	309	INFORMAT IONAL	A warning condition was cleared.	
airInformationalCondition APC Air: Informational condition detected.	310	INFORMAT IONAL	An informational condition was detected.	
airInformationalConditionCle ared APC Air: Informational condition was cleared.	311	INFORMAT IONAL	An informational condition was cleared.	
xPDUThreePhaseInputVoltage Alarm APC PDU: Main input voltage out-of-range alarm.	312	MAJOR	Input voltage is out-of-range.	
xPDUThreePhaseInputVoltage Normal APC PDU: Main input voltage back in range.	313	INFORMAT IONAL	Input voltage in range.	
xPDUThreePhaseBypassVolta geAlarm APC PDU: Bypass input voltage out-of-range alarm.	314	MAJOR	Bypass input voltage is out-of-range.	
xPDUThreePhaseBypassVolta geNormal APC PDU: Bypass input voltage back in range.	315	INFORMAT IONAL	Bypass input voltage in range.	
xPDUThreePhaseOutputVolta geAlarm APC PDU: Output voltage out-of-range alarm.	316	MAJOR	Output voltage is out-of-range.	
xPDUThreePhaseOutputVolta geNormal APC PDU: Output voltage back in range.	317	INFORMAT IONAL	Output voltage in range.	
xPDUThreePhaseOutputCurre ntAlarm APC PDU: Output (load) current out-of-range alarm.	318	MAJOR	Output current is out-of-range.	
xPDUThreePhaseOutputCurre ntNormal APC PDU: Output (load) current back in range.	319	INFORMAT IONAL	Output current in range.	
xPDUOutputFrequencyAlarm APC PDU: Output frequency out-of-range alarm.	320	MAJOR	Output frequency is out-of-range.	

Table: PowerNet-MIB Trap (ENTERPRISE : enterprises.318)

TRAP-TYPE/ Alarm type	Specific	Severity	Detailed Messages (%d: optional number %s: system variable)	Remarks
xPDUOutputFrequencyNormal APC PDU: Output frequency back in range.	321	INFORMAT IONAL	Output frequency in range.	
xPDUSystemGroundCurrentA larm APC PDU: Earth ground current over range alarm.	322	MAJOR	Earth ground current is over limit.	
xPDUSystemGroundCurrentN ormal APC PDU: Earth ground current back in range.	323	INFORMAT IONAL	Earth ground current in range.	
xPDUInputContactStateAbnor mal APC PDU: Input contact has changed to its abnormal state.	324	WARNING	Input contact has changed to its abnormal state.	
xPDUInputContactStateNorm al APC PDU: Input contact has changed to its normal state.	325	INFORMAT IONAL	Input contact has changed to its normal state.	
xPDUOutputRelayStateAbnor mal APC PDU: Output Relay has changed to its abnormal state.	326	WARNING	Output Relay has changed to its abnormal state.	
xPDUOutputRelayStateNorm al APC PDU: Output Relay has changed to its normal state.	327	INFORMAT IONAL	Output Relay has changed to its normal state.	
xPDUCoolingFanAlarm APC PDU: Cooling fan failure alarm.	328	MAJOR	Cooling fan failure.	
xPDUCoolingFanAlarmClear ed APC PDU: Cooling fan alarm cleared.	329	INFORMAT IONAL	Cooling fan alarm cleared.	
xPDUTransformerTempAlarm APC PDU: Isolation transformer over temperature alarm.	330	MAJOR	Transformer temp alarm.	
xPDUTransformerTempAlarm Cleared APC PDU: Isolation transformer over temperature alarm cleared.	331	INFORMAT IONAL	Transformer temp alarm cleared.	
xPDUBranchCurrentAlarm APC PDU: Branch circuit current out-of-range alarm.	332	MAJOR	Branch circuit current is out-of-range.	
xPDUBranchCurrentNormal APC PDU: Branch circuit current back in range.	333	INFORMAT IONAL	Branch circuit current in range.	
xPDUBreakerChangeEvent APC PDU: Breaker/switch change event.	334	INFORMAT IONAL	Breaker/switch change event.	

Table: PowerNet-MIB Trap (ENTERPRISE : enterprises.318)

TRAP-TYPE/ Alarm type	Specific	Severity	Detailed Messages (%d: optional number %s: system variable)	Remarks
xPDUInternalCommError APC PDU: Internal communication error.	335	MAJOR	Internal communication error.	
xPDUInternalCommEstablished APC PDU: Internal Communication established.	336	INFORMAT IONAL	Communication established.	
xPDUSystemStateAlarm APC PDU: System state alarm.	337	WARNING	PDU state alarm.	
xPDUSystemStateNormal APC PDU: System state returned to normal.	338	INFORMAT IONAL	PDU state normal.	
xPDUEpoTestMode APC PDU: Emergency Power Off (EPO) in test mode.	339	WARNING	EPO disabled.	
xPDUEpoArmed APC PDU: Emergency Power Off (EPO) enabled.	340	INFORMAT IONAL	EPO armed.	
xPDUFuseBlownAlarm APC PDU: Check fuse alarm.	341	MAJOR	Fuse detected opened.	
xPDUFuseBlownAlarmCleared APC PDU: Check fuse alarm cleared.	342	INFORMAT IONAL	Fuse alarm cleared.	
xPDUBreakerPositionAlarm APC PDU: Breaker position alarm.	343	MAJOR	Breaker position alarm.	
xPDUBreakerPositionAlarmC leared APC PDU: Breaker position alarm cleared.	344	INFORMAT IONAL	Breaker alarm cleared.	

B.25 ROMPILOT-MIB (ROMPILOT.MIB)

Traps from ROM PILOT (phoenix BIOS).

Table: ROMPILOT-MIB Trap (ENTERPRISE : enterprises.2487)

TRAP-TYPE/ Alarm type	Specific	Severity	Detailed Messages (%d: optional number %s: system variable)	Remarks
rpWarmResetTrap RomPilot Warm Reset Trap.	257	INFORMAT IONAL	RomPilot machine %s with MAC address %m has performed a warm reset and is running the BIOS POST.	
rpColdResetTrap RomPilot Cold Reset Trap.	258	INFORMAT IONAL	RomPilot machine %s with MAC address %m has performed a cold reset and is running the BIOS POST.	
rpDiagResetTrap RomPilot Diagnostic Reset Trap.	259	MINOR	RomPilot machine %s with MAC address %m has performed a diagnostic reset and is running the BIOS POST.	
rpIDEResetTrap RomPilot IDE disk Reset Trap.	260	MINOR	RomPilot machine %s with MAC address %m has performed an IDE disk reset and is running the BIOS POST.	

Table: ROMPILOT-MIB Trap (ENTERPRISE : enterprises.2487)

TRAP-TYPE/ Alarm type	Specific	Severity	Detailed Messages (%d: optional number %s: system variable)	Remarks
rpBootTrap RomPilot OS Boot Trap.	512	INFORMAT IONAL	RomPilot machine %s with MAC address %m is starting to boot its Operating System.	
rpPostFtlErrorTrap RomPilot Fatal POST Error Trap.	769	MAJOR	RomPilot machine %s with MAC address %m has detected a fatal error during BIOS POST.	
rpPostConErrorTrap RomPilot Conditional POST Error Trap.	770	MINOR	RomPilot machine %s with MAC address %m has detected a conditional error during BIOS POST.	
rpPostWargTrap RomPilot Conditional POST Error Trap.	771	MINOR	RomPilot machine %s with MAC address %m has detected a conditional error during BIOS POST.	
rpSecurityTrap RomPilot Security Breach Trap.	1024	INFORMAT IONAL	RomPilot machine %s with MAC address %m has loaded its Operating System.	
rpNosUpTrap RomPilot OS Loaded Trap.	1280	INFORMAT IONAL	RomPilot machine %s with MAC address %m has loaded its Operating System.	
rpCriticalTrap RomPilot Critical Trap.	1536	MAJOR	RomPilot machine %s with MAC address %m has sent a critical trap.	
rpDisconnectTrap RomPilot Disconnect Trap.	1792	INFORMAT IONAL	RomPilot machine %s with MAC address %m has sent a disconnect trap and will end communications abruptly.	
rpReconnectTrap RomPilot Reconnect Trap.	2048	INFORMAT IONAL	RomPilot machine %s with MAC address %m has sent a reconnect trap. This means that the RomPilot enabled machine is able to resume communications.	
rpPostWarningTrap RomPilot POST Warning Trap.	16384	MINOR	RomPilot machine %s with MAC address %m has detected a warning during BIOS POST.	
rpPostConditionalTrap RomPilot Conditional POST Error Trap.	32768	MINOR	RomPilot machine %s with MAC address %m has detected a conditional error during BIOS POST.	
rpPostFatalTrap RomPilot Fatal POST Error Trap.	49152	MAJOR	RomPilot machine %s with MAC address %m has detected a fatal error during BIOS POST.	

B.26 RFC1157 (rfc1157.mib)

Traps from SNMP standard (RFC1157). They are sent by the SNMP master agent of the OS.
Refer to the RFC1157 manual for details.

Table: RFC1157 Trap (ENTERPRISE : The content is different depending on the kind of MasterAgent from which
Trap is issued.)

TRAP-TYPE/ Alarm type	Specific	Severity	Detailed Messages (%d: optional number %s: system variable)	Remarks
rfc1157ColdStart Cold start	0	INFORMA TIONAL	Station reinitialized.	Sent at the SNMP service start. This is not an error.

Table: RFC1157 Trap (ENTERPRISE : The content is different depending on the kind of MasterAgent from which Trap is issued.)

TRAP-TYPE/ Alarm type	Specific	Severity	Detailed Messages (%d: optional number %s: system variable)	Remarks
rfc1157WarmStart Warm start	0	INFORMA TIONAL	Station reinitialized.	Sent at the SNMP service restart. This is not an error.
rfc1157LinkDown Link down	0	CRITICAL	Communication link failed at the station %d.	Sent when the connection with the interface number %d is cut. Check the network environment.
rfc1157LinkUp Link up	0	INFORMA TIONAL	Communication link restored at the station %d.	Sent when the connection with the interface number %d is started. This is not an error.
rfc1157AuthenticationFailure Authentication failure	0	MINOR	Unauthorized message received.	Sent when receiving the SNMP request packet from invalid community or IP address. Check the network environment.
rfc1157EGPNeighborLost EGP neighbor lost	0	MAJOR	Neighboring station down.	The External gateway protocol (EGP) has been lost. Check the network environment.

B.27 NET-SNMP-MIB (net-snmp.mib)

Traps from Linux Net-SNMP.

Table: NET-SNMP-MIB Trap (ENTERPRISE : enterprises.8072.4)

TRAP-TYPE/ Alarm type	Specific	Severity	Detailed Messages (%d: optional number %s: system variable)	Remarks
nsNotifyStart The agent has started running.	1	INFORMAT IONAL	An indication that the agent has started running.	
nsNotifyShutdown The agent is in the process of being shut down.	2	INFORMAT IONAL	An indication that the agent is in the process of being shut down.	
nsNotifyRestart The agent has been restarted.	3	INFORMAT IONAL	An indication that the agent has been restarted.	

B.28 FUJITSU-SERVERVISOR-MIB (Servervi.mib)

Traps from Fujitsu Severvisor. Refer to the Servervisor manual for details.

Table: FUJITSU-SERVERVISOR-MIB Trap (ENTERPRISE : enterprises.211.4.36.1.1.1)

TRAP-TYPE/ Alarm type	Specific	Severity	Detailed Messages (%d: optional number %s: system variable)	Remarks
svisorTrapType Servervisor Event	32	INFORMAT IONAL	Servervisor has reported: %s	

B.29 Alert-Definition-Originator-MIB (F5emt2o.mib)

Traps from Fujitsu LDSM. Refer to the LDSM manual for details.

Table: Alert-Definition-Originator-MIB Trap (ENTERPRISE : enterprises.211.4.1.4.6)

TRAP-TYPE/ Alarm type	Specific	Severity	Detailed Messages (%d: optional number %s: system variable)	Remarks
ldsmTrap-Monitored LDSM Monitored Event	1	INFORMAT IONAL	LDSM has reported: %s %s %s %s	
ldsmTrap-Informational LDSM Informational Event	2	INFORMAT IONAL	LDSM has reported: %s %s %s %s	
ldsmTrap-Recovered LDSM Recovered Event	4	INFORMAT IONAL	LDSM has reported: %s %s %s %s	
ldsmTrap-NonCritical LDSM NonCritical Event	8	INFORMAT IONAL	LDSM has reported: %s %s %s %s	
ldsmTrap-Critical LDSM Critical Event	16	INFORMAT IONAL	LDSM has reported: %s %s %s %s	
ldsmTrap-NonRecoverable LDSM NonRecoverable Event	32	INFORMAT IONAL	LDSM has reported: %s %s %s %s	

B.30 LDSM-MIB (ldsm.mib)

Traps from Fujitsu LDSM. Refer to the LDSM manual for details.

Table: LDSM-MIB Trap (ENTERPRISE : enterprises343.2.5.1.3)

TRAP-TYPE/ Alarm type	Specific	Severity	Detailed Messages (%d: optional number %s: system variable)	Remarks
ldsmOKTrap Intel LANDesk® Server Manager has reported a status OK event.	1	INFORMAT IONAL	Intel LANDesk® Server Manager has reported: The computer's status is %s.	
ldsmInformationalTrap Intel LANDesk® Server Manager has reported a status Informational event.	2	INFORMAT IONAL	Intel LANDesk® Server Manager has reported: The computer's status is %s.	
ldsmWarningTrap Intel LANDesk® Server Manager has reported a status Warning event.	3	MINOR	Intel LANDesk® Server Manager has reported: The computer's status is %s.	
dsmCriticalTrap Intel LANDesk® Server Manager has reported a status Critical event.	4	CRITICAL	Intel LANDesk® Server Manager has reported: The computer's status is %s.	

B.31 LDCM-MIB (Ldcm.mib)

Traps from Fujitsu LDSM. Refer to the LDSM manual for details.

Table: LDCM-MIB Trap (ENTERPRISE : enterprises343.2.5.1.2)

TRAP-TYPE/ Alarm type	Specific	Severity	Detailed Messages (%d: optional number %s: system variable)	Remarks
ldcmUnknownTrap Intel LANDesk® Client Manager has reported an Unknown event.	1	INFORMAT IONAL	Client Manager has reported an event on the computer %s: %s	
ldcmInfoTrap Intel LANDesk® Client Manager has reported an Informational event.	2	INFORMAT IONAL	Client Manager has reported an event on the computer %s: %s	
ldcmOkTrap Intel LANDesk® Client Manager has reported a severity OK event.	3	INFORMAT IONAL	Client Manager has reported an event on the computer %s: %s	
ldcmWarningTrap Intel LANDesk® Client Manager has reported a severity Warning event.	4	MINOR	Client Manager has reported an event on the computer %s: %s	
ldcmCriticalTrap Intel LANDesk® Client Manager has reported a severity Critical event.	5	CRITICAL	Client Manager has reported an event on the computer %s: %s	
ldcmFatalTrap Intel LANDesk® Client Manager has reported a severity Fatal event.	6	CRITICAL	Client Manager has reported an event on the computer %s: %s	

B.32 ADAPTECDURALINK-MIB (duralink.mib)

Traps from Duralink (Adaptec multiport adapter: 10Mbps/100Mbps multiport fast Ethernet network interface card).

Table: ADAPTECDURALINK-MIB Trap (ENTERPRISE : enterprises.1588.2.1.1.1)

TRAP-TYPE/ Alarm type	Specific	Severity	Detailed Messages (%d: optional number %s: system variable)	Remarks
duralinkStatusTrap Port Status Changed	1	INFORMAT IONAL	Group %d Port %d port status is %d.	
duralinkPortUp Port Available	2	INFORMAT IONAL	Group %s Port %s is up.	
duralinkPortDown Port Unavailable	3	MAJOR	Group %s Port %s is down.	
duralinkPortStandby Port acting as failover backup	4	INFORMAT IONAL	Group %s Port %s is acting as a failover backup.	

ServerView Trap List

B7FH-5551-01ENZ0-00

Issued on June, 2008

Issued by FUJITSU LIMITED

- The contents of this manual may be revised without prior notice.
- Fujitsu assumes no liability for damages to third party copyrights or other rights arising from the use of any information in this manual.
- No part of this manual may be reproduced in any form without the prior written permission of Fujitsu.