

Application of Firmware Compatible with the Fibre Channel Card Drivers for PRIMEQUEST

Second edition
July 15, 2008

Preface

Purpose

This manual describes the work required for updating the Fibre Channel card firmware compatible with drivers for the Fibre Channel cards (MC-08FC11/31/41/51/61/71) supplied for PRIMEQUEST servers used in Windows environments.

Intended Readers

This manual is intended for system administrators.

Constitution

This manual is organized as follows.

Chapter and title	Description
Chapter 1: Fibre Channel Card Firmware	Describes the firmware compatible with the Fibre Channel card drivers for PRIMEQUEST.
Chapter 2: Application of Firmware	Describes the flow for setting the firmware that is compatible with a driver.
Chapter 3: Fibre Channel Card Firmware Update Procedures	Describes the preparations required for changing the firmware and explains the procedures for updating it.
Appendix : Lists of the Folder Hierarchy on the Firmware CD	Describes the directory paths to the corresponding firmware contained on the Firmware CD.
Exhibit : Directions for Fibre Channel Card Settings	Provides directions for the settings of Fibre Channel firmware compatible with various Fibre Channel drivers for Windows Server 2003 as a means for confirming compatibility.

•Revision History

Publisher : Fujitsu Limited
July, 2008 publication [2.0]

Edition	Page	Date	Description
1.0	All	Des. 10, 2007	First issued
2.0	43	Jul. 15. 2008	Add PRIMEQUEST 500A Series

Trademark

Windows and Windows Server are registered trademarks or trademarks of Microsoft Corporation or its subsidiaries in the United States and other countries.

All other product names mentioned herein the trademarks or registered trademarks of their respective owners.

Copyright(c) 1981-2008 Microsoft Corporation. All rights reserved.

Copyright(c) 2008 Emulex Corporation.

All Rights Reserved, Copyright(c) Fujitsu Limited 2008

Contents

Preface

Purpose

Intended Readers

Constitution

Revision History

Chapter 1 Fibre Channel Card Firmware

1.1 Firmware Compatible with the Fibre Channel Card Drivers for PRIMEQUEST

1.1.1 Firmware for the Fibre Channel cards supported by Windows Server 2003 drivers

1.1.2 Confirming the firmware version

Chapter 2 Application of Firmware

2.1 Flow for Setting Firmware Compatible with a Driver for Windows Server 2003

Chapter 3 Fibre Channel Card Firmware Update Procedures

3.1 Preliminary Information

3.2 Required Setup

3.3 Notes

3.4 Flow for Updating Fibre Channel Card Firmware

3.5 Fibre Channel Card Firmware Update Procedures

3.6 Fibre Channel Card Firmware Update Procedures in Detail

Appendix Lists of the Folder Hierarchy on the Firmware CD

Exhibit Directions for Fibre Channel Card Settings

Chapter 1 Fibre Channel Card Firmware

1.1 Firmware Compatible with the Fibre Channel Card Drivers for PRIMEQUEST

When an FC driver for Windows Server 2003 is installed, firmware for the Fibre Channel card supported by the driver must be updated.

This firmware update work is required at the time of PRIMEQUEST new installation, the Fibre Channel driver change time, and the Fibre Channel card replacement/addition time. For details of the work, see Section 2.1, "Flow for Setting Firmware Compatible with a Driver for Windows Server 2003."

1.1.1 Firmware for the Fibre Channel cards supported by Windows Server 2003 drivers

Note: Only the following pairs of drivers and cards can be used.

Model name	Number shown in brackets on label for Fibre Channel	Windows Server 2003 driver				
		1.11a3(V6.1.11.3) for Win SP1	1.30a6(V6.1.30.6) for Win SP2	1.30a9(V6.1.30.9) for Win SP1/2		
MC-08FC11	CA05950-0966	1.91a1/1.91a5	1.91a5			
MC-08FC71	CA05950-1020					
MC-08FC31	CA05951-9610	2.10a7	2.70a5			
MC-08FC41	CA05951-9611					
MC-08FC51	CA05951-9612	2.50a4				
MC-08FC61	CA05951-9613					

- Remarks -

MC-08FC11 : 2GFC PCI-X Single Port Channel (LP10000)
MC-08FC71 : 2GFC PCI-X Single Port Channel (LP10000)
MC-08FC31 : 4GFC PCI-X Single Port Channel (LP11000)
MC-08FC41 : 4GFC PCI-X Dual Port Channel (LP11002)
MC-08FC51 : 4GFC PCI-Express Single Port Channel (LPe11000)
MC-08FC61 : 4GFC PCI-Express Dual Port Channel (LPe11002)

- * The 2G Fibre Channel card (MC08FC11/71) firmware that is compatible with one of the above Windows Server 2003 drivers is set by default. This 2G Fibre Channel card firmware need not be updated as described here. (Products shipped after June 2007)

Note: For the Fibre Channel cards purchased before June 2007, only the firmware compatible with Windows Server 2003 1.11a3 (V6.1.11.3) can be set by default.

- * The 4G Fibre Channel card (MC08FC31/41/51/61) firmware that is compatible with Windows Server 2003 1.11a3 (V6.1.11.3) is set by default. To use Fibre Channel card firmware together with the Windows Server 2003 1.30a6 (V6.1.30.6) or 1.30a9 (V6.1.30.9) driver, update the firmware.

- * Firmware CD(C122-E018-XXC2) is version 16 or later for PRIMEQUEST 420, PRIMEQUEST 480/440, PRIMEQUEST 520 and PRIMEQUEST 580/540.

- * Firmware CD(C122-E018-XXC2) is version 18 or later for PRIMEQUEST 520A, PRIMEQUEST 580A/540A and PRIMEQUEST 510A.

* XX in "C122-E018-XXC2" represents an arbitrary value.
(For example, if XX is 18, it represents Version 18.)

1.1.2 Confirming the firmware version

Confirm the current firmware version by following one of the procedures below.

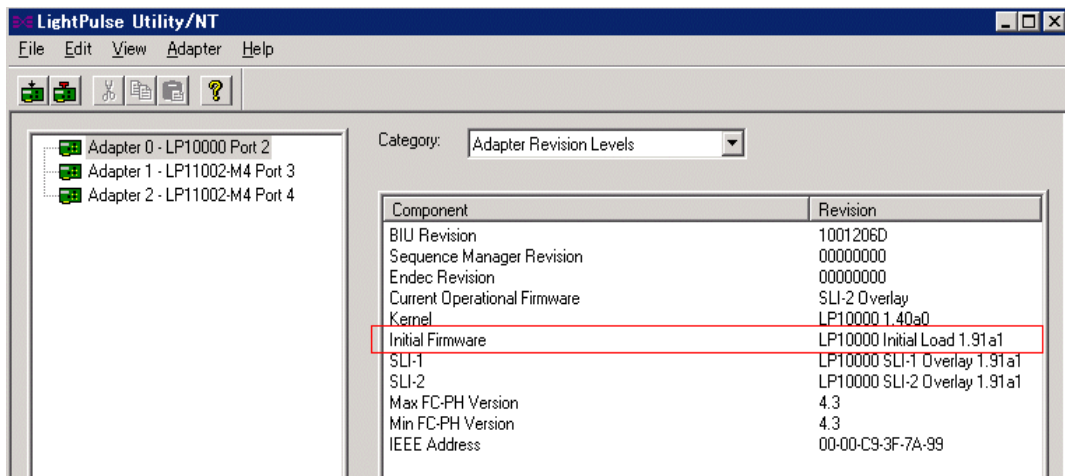
(1) Confirmation with a Windows tool (LightPulse Utility/NT)

1. Start LightPulse Utility/NT.

Click the [Start] button, and then click [Program] (or [All Programs]) - [Emulex] - [lputilnt]. LightPulse Utility/NT is started.

2. Select the corresponding Fibre Channel card (port). Select [Adapter Revision Levels] in [Category:].

3. Confirm the Revision number of the Initial Firmware component.



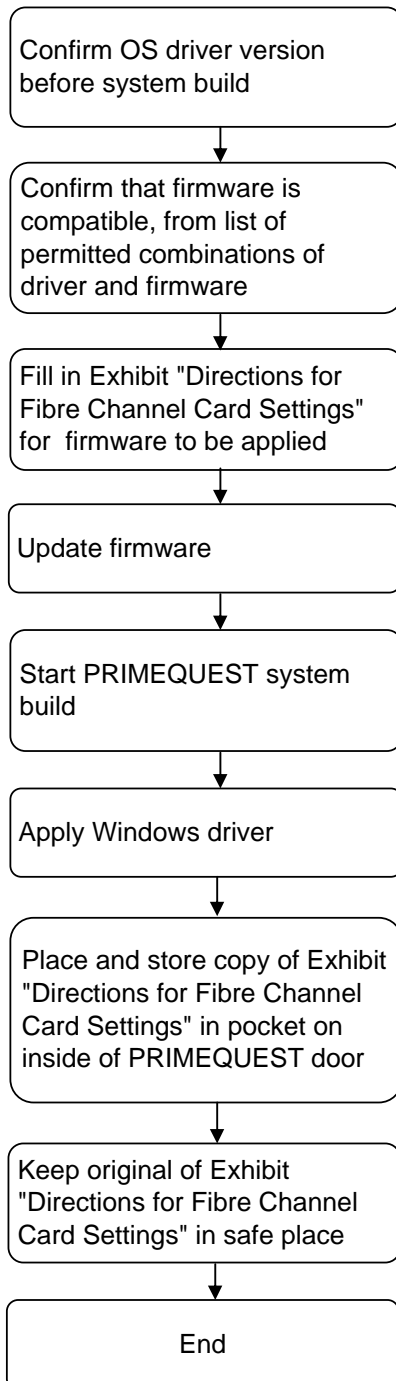
(2) Confirmation with an EFI tool (Emulex FC EFI-Bios Firmware Update Utility)

See Section 3.6.3-3 (or 3.6.9-3), "Confirm the version number before the update," in the section titled Fibre Channel Card Firmware Update Procedures in Detail."

Chapter 2 Application of Firmware

2.1 Flow for Setting Firmware Compatible with a Driver for Windows Server 2003

(1) PRIMEQUEST new installation



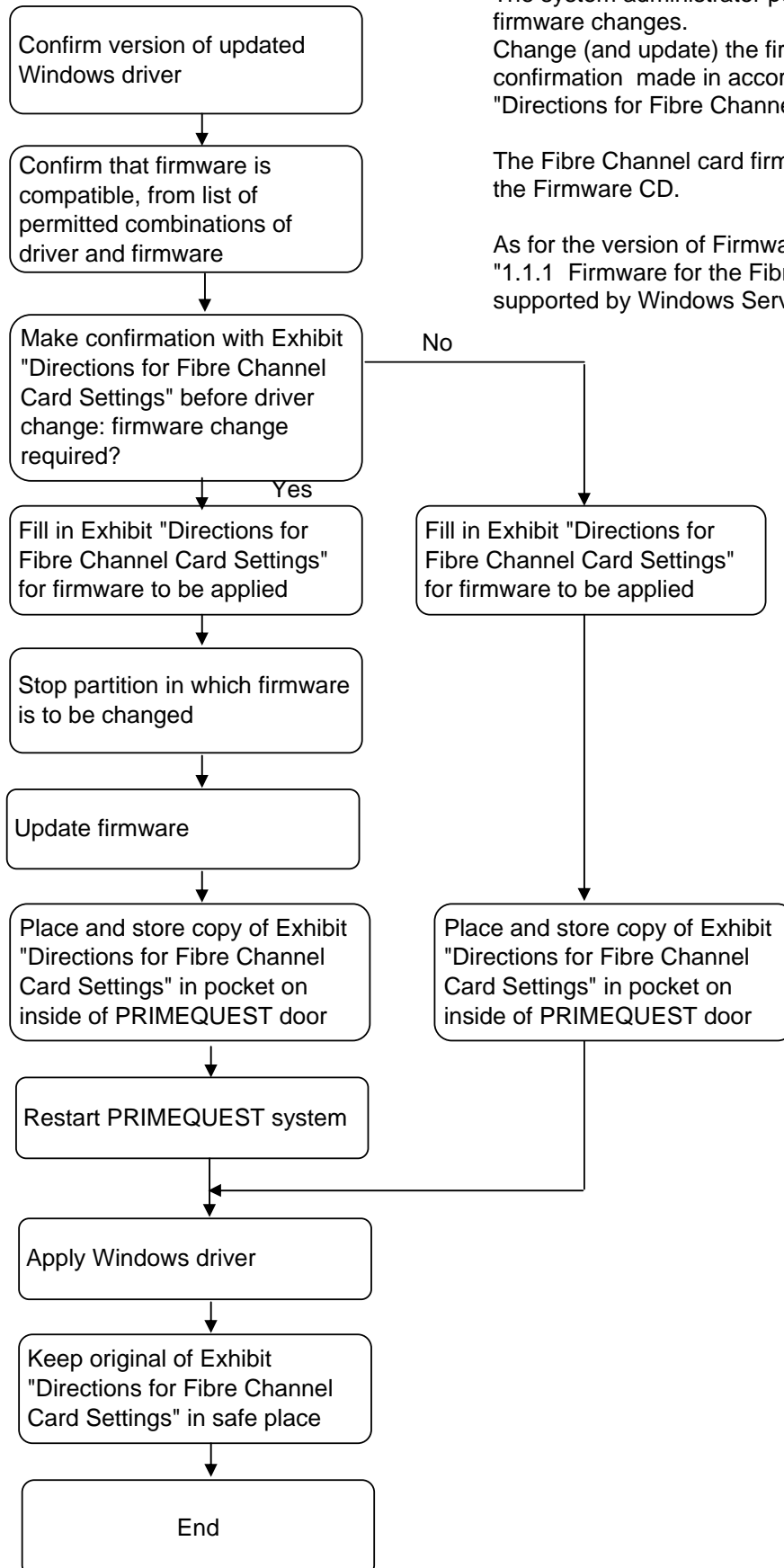
The system administrator performs the work for firmware changes.

Change (and update) the firmware, with confirmation made in accordance with Exhibit "Directions for Fibre Channel Card Settings".

The Fibre Channel card firmware is updated with the Firmware CD.

As for the version of Firmware CD, refer to "1.1.1 Firmware for the Fibre Channel cards supported by Windows Server 2003 drivers"

(2) Fibre Channel driver change

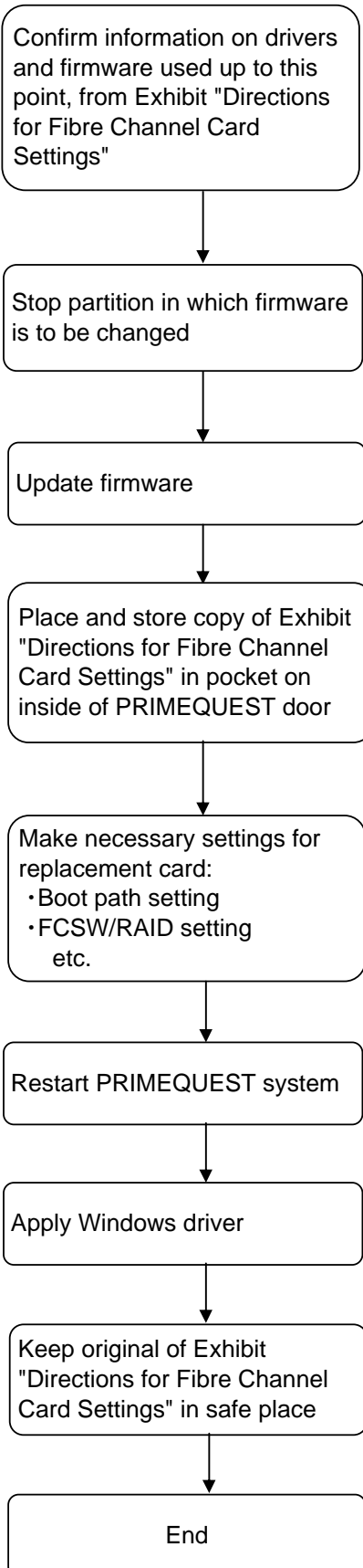


The system administrator performs the work for firmware changes.
Change (and update) the firmware, with confirmation made in accordance with Exhibit "Directions for Fibre Channel Card Settings".

The Fibre Channel card firmware is updated with the Firmware CD.

As for the version of Firmware CD, refer to "1.1.1 Firmware for the Fibre Channel cards supported by Windows Server 2003 drivers"

(3) Fibre Channel card



The system administrator performs the work for firmware changes.

Change (and update) the firmware, with confirmation made in accordance with Exhibit "Directions for Fibre Channel Card Settings".

The Fibre Channel card firmware is updated with the Firmware CD.

As for the version of Firmware CD, refer to "1.1.1 Firmware for the Fibre Channel cards supported by Windows Server 2003 drivers"

If the work for firmware changes is unnecessary in Fibre Channel card replacement (i.e., the card at the shipment time has firmware with the same revision number), this task is unnecessary.

Chapter 3 Fibre Channel Card Firmware Update Procedures

3.1 Preliminary Information

This chapter explains how to change the firmware for the Fibre Channel cards supplied for PRIMEQUEST servers.

The model names, purchasing numbers, and maintenance part numbers of the Fibre Channel cards are as follows:

- MC-08FC11 (CA06657-E301 / CA05950-0966) --- 2G FC PCI-X Single Port
- MC-08FC71 (CA06657-E311 / CA05950-1020) --- 2G FC PCI-X Dual Port
- MC-08FC31 (CA06657-E303 / CA05951-9610) --- 4G FC PCI-X Single Port
- MC-08FC41 (CA06657-E304 / CA05951-9611) --- 4G FC PCI-X Dual Port
- MC-08FC51 (CA06657-E305 / CA05951-9612) --- 4G FC PCI-Ex Single Port
- MC-08FC61 (CA06657-E306 / CA05951-9613) --- 4G FC PCI-Ex Dual Port

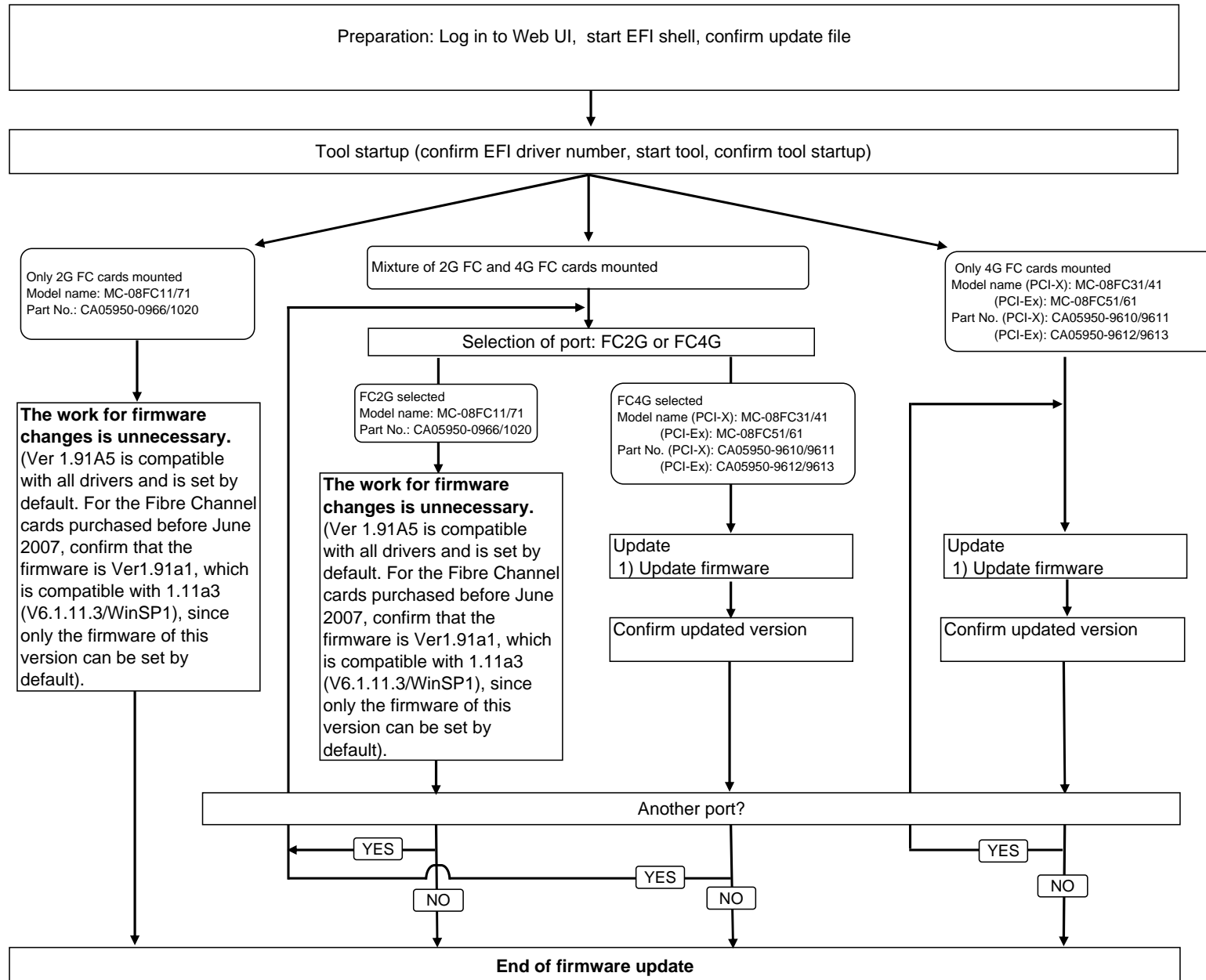
3.2 Required Setup

- (1) The control terminal must be able to perform Web-UI operations through terminal software or through the keyboard and monitor connected to the KVM interface of the PRIMEQUEST main unit.
- (2) Before beginning the work for firmware changes, confirm that the corresponding partition is in the standby state (in which its operation is stopped and only the power to its power supply circuit is still on).
- (3) Firmware is updated with the Firmware CD (C122-E018-XXC2).
 - * Firmware CD(C122-E018-XXC2) is version 16 or later for PRIMEQUEST 420, PRIMEQUEST 480/440, PRIMEQUEST 520 and PRIMEQUEST 580/540.
 - * Firmware CD(C122-E018-XXC2) is version 18 or later for PRIMEQUEST 520A, PRIMEQUEST 580A/540A and PRIMEQUEST 510A.
 - * XX in "C122-E018-XXC2" represents an arbitrary value.
(For example, if XX is 18, it represents Version 18.)

3.3 Notes

- (1) An update tool that can run under the EFI shell is used to change firmware for the Fibre Channel cards.
Confirm the methods for operations in the section titled "Fibre Channel Firmware Update Procedures" and the subsequent section.
- (2) Firmware must be updated for every channel of the mounted Fibre Channel card.
 - Single port channel: MC-08FC11/31/51/71
→ Channels to update: One per Fibre Channel card
 - Dual port channel: MC-08FC41/61
→ Channels to update: Two per Fibre Channel card
- (3) The device names, firmware versions, directory structures, and file names that are described and displayed in screenshots in this manual are examples.
When changing firmware, read and interpret this information appropriate to your environment.

3.4 Flow for Updating Fibre Channel Card Firmware



3.5 Fibre Channel Card Firmware Update Procedures

Select work procedure 1 or work procedure 2.

Item	Section No.	Work procedure 1	Section No.	Work procedure 2	Operations	Result and action
Preparation	Web-UI operations					
	3.6.1-1	Connect to the Web-UI			Connect to Web-UI and enter Power Control mode.	
	3.6.1-2	Boot Control / power-on / selection of [DVD]			Perform setting Boot Control, power-on and selecting DVD.	
	Confirmation of work terminal					
	Operation through KVM		Operation through terminal software			
			Console connection procedure		Prepare to start work from console screens.	
	3.6.1-3	Start the EFI shell	3.6.7-1	Start the EFI shell	Select "EFI Shell [Built-in]" on the EFI startup screen.	
	3.6.1-4	Confirm the file system (fs)	3.6.7-2	Confirm the file system (fs)	Confirm the fs number assigned to the DVD-ROM drive.	
Tool startup	3.6.1-5	Confirm the Firmware CD	3.6.7-3	Confirm the Firmware CD	Move to the assigned fs location. Confirm that the Firmware CD is read by the ls command.	
	3.6.2-1	Confirm the EFI driver number for the Fibre Channel device	3.6.8-1	Confirm the EFI driver number for the Fibre Channel device	Confirm this with the drivers command (-b is the page display option).	
	3.6.2-2	Enter the command for startup	3.6.8-2	Enter the command for startup	Start the tool with the drvcdg command.	
	3.6.2-3	Confirm startup	3.6.8-3	Confirm startup	Confirm startup on the screen.	
Update	3.6.3-1	Select the adapter to be updated	3.6.9-1	Select the adapter to be updated	Select a listed adapter with the arrow keys. Note: Select one for every port of a Dual Port card.	
	3.6.3-2	Select "Firmware Update"	3.6.9-2	Select "Firmware Update"	Select "2. Firmware Update" with the arrow keys, and press [Enter].	*3
	3.6.3-3	Confirm the version number before the update	3.6.9-3	Confirm the version number before the update	Confirm the version number at the beginning of the "Firmware" line on the screen.	
	3.6.3-4	Perform the update	3.6.9-4	Perform the update	Specify the directory path and file name of the update file.	*1
	3.6.3-5	Complete the update procedure	3.6.9-5	Complete the update procedure	Press any key to complete the update process (which is followed by a return to the step in Section 3.6.3-2 or 3.6.9-2).	
Confirmation	3.6.4-1	Select "Firmware Update"	3.6.10-1	Select "Firmware Update"	Select "2. Firmware Update" with the arrow keys, and press [Enter].	
	3.6.4-2	Confirm the version number after the update	3.6.10-2	Confirm the version number after the update	Confirm the version number at the beginning of the "Firmware" line on the screen.	*2
Work on another adapter	3.6.5	Updating another adapter	3.6.11	Updating another adapter	Repeat the update work for any associated adapter. Note: Perform an update for every port of a Dual Port card.	
	Go back in the procedure to Section 3.6.3-2 or 3.6.9-2 to update another adapter.					
Exiting EFI shell	3.6.6-1	Exit the tool	3.6.12-1	Exit the tool	Exit the tool after updating all corresponding adapters.	
	3.6.6-2	Enter "exit" in the EFI shell	3.6.12-2	Enter "exit" in the EFI shell		
	3.6.6-3	Eject the Firmware CD	3.6.12-3	Eject the Firmware CD	Eject the Firmware CD from the KVM DVD-ROM drive.	
Terminating Web-UI	Termination of Web-UI connection					
	3.6.13	Setting "Power Off" for the partition			Set "Power Off" for the partition.	
Notes	3.6.14	Starting the tool in an environment with various EFI drivers	Same as on left			

*1 Syntax error occurs: Repeat the steps starting from the step in Section 3.6.3-4 or 3.6.9-4.
 Execution error occurs: Repeat the steps starting from the step in Section 3.6.2-2 or 3.6.8-2.
 If the process takes more than one minute, treat it as an execution error since a normal process ends within several seconds.

*2 Unexpected value occurs: Repeat the steps starting from the step in Section 3.6.2-2 or 3.6.8-2.

*3 The file name entered at the step explained in Section 3.6.3-4 or 3.6.9-4 is automatically selected for the firmware update.

3.6 Fibre Channel Card Firmware Update Procedures in Detail

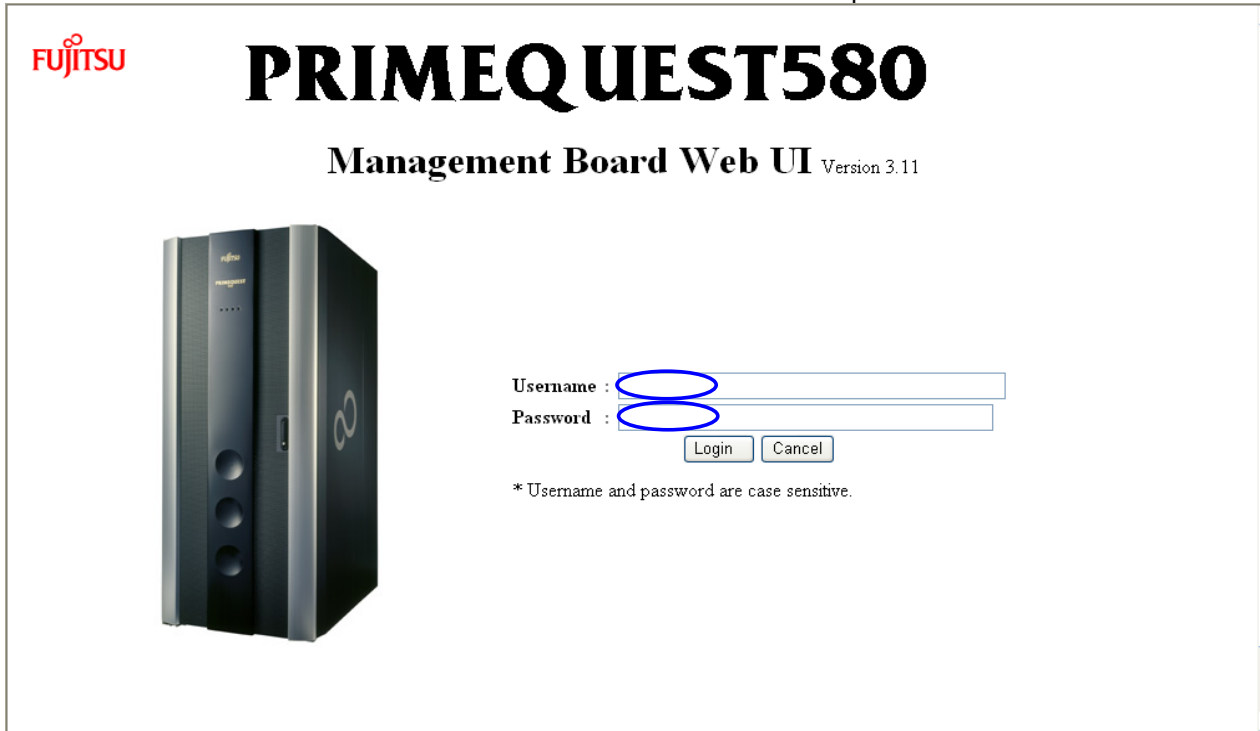
Preparation

3.6.1-1 Connect to the Web-UI

1) Connect to the Web-UI with the following Login URL:

http://<<MMB-IP>>:<<http-port-number>>

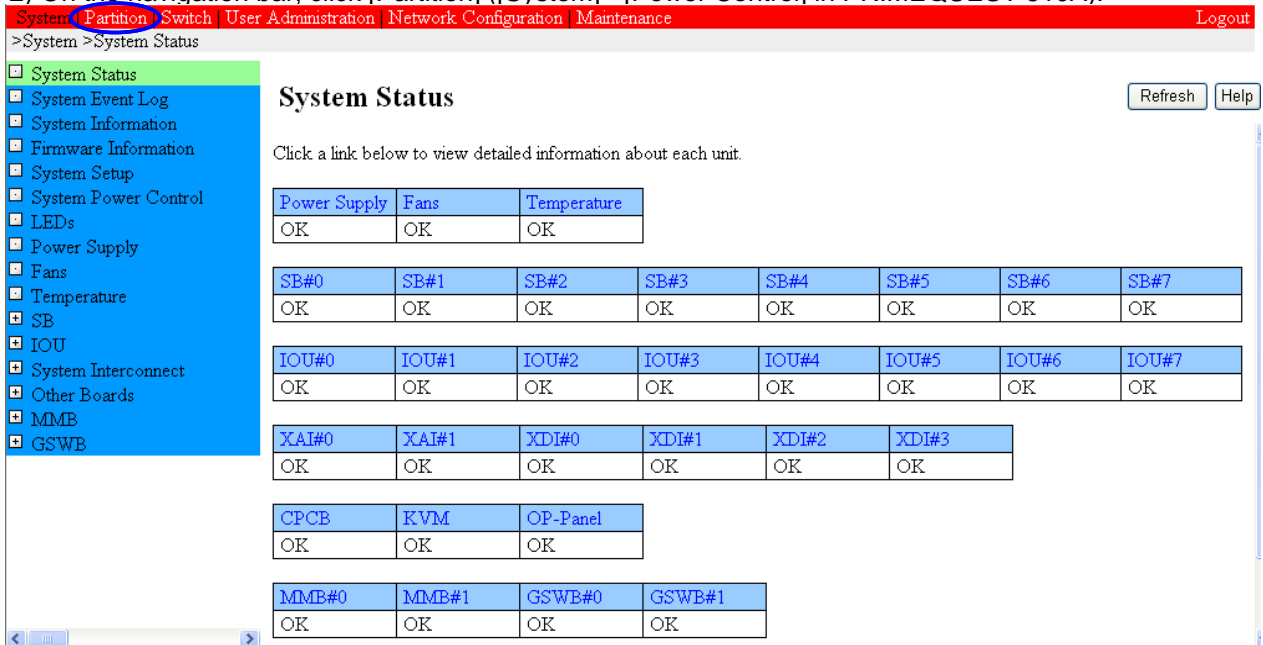
Username: Administrator account Password: Administrator account password



The image shows the login page of the PRIMEQUEST580 Management Board Web UI. At the top left is the Fujitsu logo. The main title is "PRIMEQUEST580" in large bold letters, followed by "Management Board Web UI Version 3.11". On the left is a 3D image of the server rack. On the right, there are input fields for "Username" and "Password", both circled in blue. Below these fields are "Login" and "Cancel" buttons. A note at the bottom states: "* Username and password are case sensitive."

Login page (for preparations)

2) On the navigation bar, click [Partition] ([System] - [Power Control] in PRIMEQUEST 510A).



The image shows the "System Status" page of the web UI. The top navigation bar includes links for System, Partition, Switch, User Administration, Network Configuration, Maintenance, and Logout. The left sidebar lists various system components like System Status, System Event Log, System Information, Firmware Information, System Setup, System Power Control, LEDs, Power Supply, Fans, Temperature, SB, IOU, System Interconnect, Other Boards, MMB, and GSWB. The main content area is titled "System Status" and includes a "Refresh" and "Help" button. Below the title, there is a link to view detailed information about each unit. The page displays several tables showing the status of various components, all of which are currently "OK".

Power Supply	Fans	Temperature
OK	OK	OK

SB#0	SB#1	SB#2	SB#3	SB#4	SB#5	SB#6	SB#7
OK	OK	OK	OK	OK	OK	OK	OK

IOU#0	IOU#1	IOU#2	IOU#3	IOU#4	IOU#5	IOU#6	IOU#7
OK	OK	OK	OK	OK	OK	OK	OK

XAI#0	XAI#1	XDI#0	XDI#1	XDI#2	XDI#3
OK	OK	OK	OK	OK	OK

CPCB	KVM	OP-Panel
OK	OK	OK

MMB#0	MMB#1	GSWB#0	GSWB#1
OK	OK	OK	OK

System Status page

3) Go to the Partition > Power Control page (System > Power Control page in PRIMEQUEST 510A), and confirm the information there.

System | Partition | Switch | User Administration | Network Configuration | Maintenance Logout

>Partition >Power Control

Power Control

Refresh Help

Select a Power Control option for one or more partitions, then click the Apply button to take effect.

#	Partition Name	Status	Power Status	System Progress	Power Control	Force Power Off Delay
0	Partition#0	OK	On	OS Running	(Not specified)	<input type="checkbox"/> <input type="checkbox"/> min
2	Partition#2	OK	Standby	Power Off	(Not specified)	<input type="checkbox"/> <input type="checkbox"/> min
3	Partition#3	OK	Standby	Power Off	(Not specified)	<input type="checkbox"/> <input type="checkbox"/> min
4	Partition#4	OK	Standby	Power Off	(Not specified)	<input type="checkbox"/> <input type="checkbox"/> min
6	Partition#6	OK	On	OS Running	(Not specified)	<input type="checkbox"/> <input type="checkbox"/> min
8	Partition#8	OK	On	OS Running	(Not specified)	<input type="checkbox"/> <input type="checkbox"/> min
10	Partition#10	OK	Standby	Power Off	(Not specified)	<input type="checkbox"/> <input type="checkbox"/> min
12	Partition#12	OK	Standby	Power Off	(Not specified)	<input type="checkbox"/> <input type="checkbox"/> min
14	Partition#14	OK	On	OS Running	(Not specified)	<input type="checkbox"/> <input type="checkbox"/> min

Apply Cancel

Partition > Power Control page

*PRIMEQUEST 510A

System | User Administration | Network Configuration | Maintenance Logout

>System >Power Control

Power Control

Refresh Help

Select a Power Control option, then click the Apply button to take effect.

Status	OK
Power Status	On
System Progress	Power Off
Power Control	(Not specified)
Force Power Off Delay	<input type="checkbox"/> <input type="checkbox"/> min
Boot Selector	No Override Note: The Boot Selector only applies for one system restart. After the system restart, this setting returns to "No Override" automatically.
POST(Power On Self Test)	Fast Boot

Apply Cancel

System > Power Control page

3.6.1-2 Change the boot control mode

- 1) Select the partition of the Fibre Channel card whose firmware is to be updated. Click [Boot Control].
(In PRIMEQUEST 510A, this procedure is unnecessary.)

System | Partition | Switch | User Administration | Network Configuration | Maintenance Logout

>Partition >Partition#12 >Boot Control

Power Control

Schedule

USB/Video/DVD Switch

Console Redirection Switch

Partition Configuration

Split Configuration

Reserved SB Configuration

Partition#0

Partition#2

Partition#3

Partition#4

Partition#6

Partition#8

Partition#10

Partition#12

Information

Boot Control

ASR Control

Console Redirection

Mode

PSA

Partition#14

Boot Control

Click the Apply Button to apply all changes.

Boot Selector	No Override Note: The boot Selector only applies for one partition restart. After the partition restart, this setting returns to 'No Override' automatically.
POST(Power On Self Test)	Standard Diagnosis

Apply Cancel

Help

Partition > Boot Control page

- 2) Select a Boot Selector mode.

Set "Force boot into EFI Boot Manager" as the Boot Selector mode, and click <Apply>.
(This prevents automatic startup with an arbitrary OS (the one selected by the cursor position) when the Wait Count time (default: 30 seconds) has elapsed on the EFI shell startup screen.)

Note: This "Force boot into EFI Boot Manager" setting for a partition is cleared when the partition is started. It must be set again each time that the Fibre Channel firmware is updated.

System | Partition | Switch | User Administration | Network Configuration | Maintenance Logout

>Partition >Partition#12 >Boot Control

Power Control

Schedule

USB/Video/DVD Switch

Console Redirection Switch

Partition Configuration

Split Configuration

Reserved SB Configuration

Partition#0

Partition#2

Partition#3

Partition#4

Partition#6

Partition#8

Partition#10

Partition#12

Information

Boot Control

ASR Control

Console Redirection

Mode

PSA

Partition#14

Boot Control

Click the Apply Button to apply all changes.

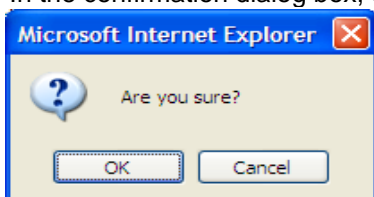
Boot Selector	Force boot into EFI Boot Manager Note: The boot Selector only applies for one partition restart. After the partition restart, this setting returns to 'No Override' automatically.
POST(Power On Self Test)	Standard Diagnosis

Apply Cancel

Help

Partition > Boot Control page (with the Boot Selector setting)

In the confirmation dialog box, click <OK>.



In the completion dialog box, click <OK>.



- 3) On the Partition > Power Control page (System > Power Control page in PRIMEQUEST 510A), turn on the power to the partition. [Part 1]
On the navigation bar, click [Partition].

System | **Partition** | Switch | User Administration | Network Configuration | Maintenance | Logout

>Partition >Power Control

☐ Power Control
☒ Schedule
☐ USB/Video/DVD Switch
☐ Console Redirection Switch
☐ Partition Configuration
☐ Split Configuration
☐ Reserved SB Configuration
☐ Partition#0
☐ Partition#2
☐ Partition#3
☐ Partition#4
☐ Partition#6
☐ Partition#8
☐ Partition#10
☐ Partition#12
☐ Partition#14

Power Control

Select a Power Control option for one or more partitions, then click the Apply button to take effect.

#	Partition Name	Status	Power Status	System Progress	Power Control	Force Power Off Delay
0	Partition#0	OK	On	OS Running	(Not specified)	<input type="checkbox"/> <input type="checkbox"/> min
2	Partition#2	OK	Standby	Power Off	(Not specified)	<input type="checkbox"/> <input type="checkbox"/> min
3	Partition#3	OK	Standby	Power Off	(Not specified)	<input type="checkbox"/> <input type="checkbox"/> min
4	Partition#4	OK	Standby	Power Off	(Not specified)	<input type="checkbox"/> <input type="checkbox"/> min
6	Partition#6	OK	On	OS Running	(Not specified)	<input type="checkbox"/> <input type="checkbox"/> min
8	Partition#8	OK	On	OS Running	(Not specified)	<input type="checkbox"/> <input type="checkbox"/> min
10	Partition#10	OK	Standby	Power Off	(Not specified)	<input type="checkbox"/> <input type="checkbox"/> min
12	Partition#12	OK	Standby	Power Off	(Not specified)	<input type="checkbox"/> <input type="checkbox"/> min
14	Partition#14	OK	On	OS Running	(Not specified)	<input type="checkbox"/> <input type="checkbox"/> min

Apply Cancel

Partition > Power Control page

- 4) On the Partition > Power Control page (System > Power Control page in PRIMEQUEST 510A), turn on the power to the partition. [Part 2]
Set [Power On] in the appropriate Power Control list box, and click <Apply>.

System | **Partition** | Switch | User Administration | Network Configuration | Maintenance | Logout

>Partition >Power Control

☐ Power Control
☒ Schedule
☐ USB/Video/DVD Switch
☐ Console Redirection Switch
☐ Partition Configuration
☐ Split Configuration
☐ Reserved SB Configuration
☐ Partition#0
☐ Partition#2
☐ Partition#3
☐ Partition#4
☐ Partition#6
☐ Partition#8
☐ Partition#10
☐ Partition#12
☐ Partition#14

Power Control

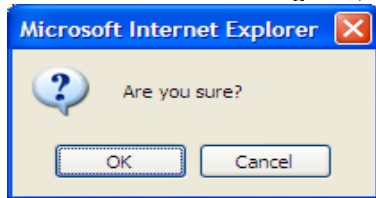
Select a Power Control option for one or more partitions, then click the Apply button to take effect.

#	Partition Name	Status	Power Status	System Progress	Power Control	Force Power Off Delay
0	Partition#0	OK	On	OS Running	(Not specified)	<input type="checkbox"/> <input type="checkbox"/> min
2	Partition#2	OK	Standby	Power Off	(Not specified)	<input type="checkbox"/> <input type="checkbox"/> min
3	Partition#3	OK	Standby	Power Off	(Not specified)	<input type="checkbox"/> <input type="checkbox"/> min
4	Partition#4	OK	Standby	Power Off	(Not specified)	<input type="checkbox"/> <input type="checkbox"/> min
6	Partition#6	OK	On	OS Running	(Not specified)	<input type="checkbox"/> <input type="checkbox"/> min
8	Partition#8	OK	On	OS Running	(Not specified)	<input type="checkbox"/> <input type="checkbox"/> min
10	Partition#10	OK	Standby	Power Off	(Not specified)	<input type="checkbox"/> <input type="checkbox"/> min
12	Partition#12	OK	Standby	Power Off	Power On	<input type="checkbox"/> <input type="checkbox"/> min
14	Partition#14	OK	On	OS Running	(Not specified)	<input type="checkbox"/> <input type="checkbox"/> min

Apply Cancel

Partition > Power Control page ("Power On" set)

In the confirmation dialog box, click <OK>.



- 5) On the Partition > Power Control page (System > Power Control page in PRIMEQUEST 510A), turn on the power to the partition. [Part 3]

Confirm that the partition has "Power On In Progress" displayed in the System Progress column after "Power On" is set.

System | Partition | Switch | User Administration | Network Configuration | Maintenance Logout

>Partition >Power Control

Power Control Refresh Help

Select a Power Control option for one or more partitions, then click the Apply button to take effect.

#	Partition Name	Status	Power Status	System Progress	Power Control	Force Power Off Delay
0	Partition#0	OK	On	OS Running	(Not specified)	<input type="checkbox"/> min
2	Partition#2	OK	Standby	Power Off	(Not specified)	<input type="checkbox"/> min
3	Partition#3	OK	Standby	Power Off	(Not specified)	<input type="checkbox"/> min
4	Partition#4	OK	Standby	Power Off	(Not specified)	<input type="checkbox"/> min
6	Partition#6	OK	On	OS Running	(Not specified)	<input type="checkbox"/> min
8	Partition#8	OK	On	OS Running	(Not specified)	<input type="checkbox"/> min
10	Partition#10	OK	Standby	Power Off	(Not specified)	<input type="checkbox"/> min
12	Partition#12	OK	Standby	Power On In Progress	(Not specified)	<input type="checkbox"/> min
14	Partition#14	OK	On	OS Running	(Not specified)	<input type="checkbox"/> min

Apply Cancel

Partition > Power Control page ("Power On" operation started)

- 6) On the Partition > Power Control page (System > Power Control page in PRIMEQUEST 510A), turn on the power to the partition. [Part 4]

Confirm that the partition has "POST 1094h" displayed finally in the System Progress column after "Power On" is set.

System | Partition | Switch | User Administration | Network Configuration | Maintenance Logout

>Partition >Power Control

Power Control Refresh Help

Select a Power Control option for one or more partitions, then click the Apply button to take effect.

#	Partition Name	Status	Power Status	System Progress	Power Control	Force Power Off Delay
0	Partition#0	OK	On	OS Running	(Not specified)	<input type="checkbox"/> min
2	Partition#2	OK	Standby	Power Off	(Not specified)	<input type="checkbox"/> min
3	Partition#3	OK	Standby	Power Off	(Not specified)	<input type="checkbox"/> min
4	Partition#4	OK	Standby	Power Off	(Not specified)	<input type="checkbox"/> min
6	Partition#6	OK	On	OS Running	(Not specified)	<input type="checkbox"/> min
8	Partition#8	OK	On	OS Running	(Not specified)	<input type="checkbox"/> min
10	Partition#10	OK	Standby	Power Off	(Not specified)	<input type="checkbox"/> min
12	Partition#12	OK	On	POST 1094h	(Not specified)	<input type="checkbox"/> min
14	Partition#14	OK	On	OS Running	(Not specified)	<input type="checkbox"/> min

Apply Cancel

Partition > Power Control page ("Power On" operation completed)

7) Select [DVD].

On the Partition > USB/Video/DVD Switch page, select the USB/Video/DVD switch for this partition, and click <Apply>.

Never make this change during firmware update processing.

Note: Write down the current setting in order to restore the setting after the firmware update.

(In PRIMEQUEST 510A, this procedure is unnecessary.)

System | Partition | Switch | User Administration | Network Configuration | Maintenance | Logout

>Partition >USB/Video/DVD Switch

USB/Video/DVD Switch

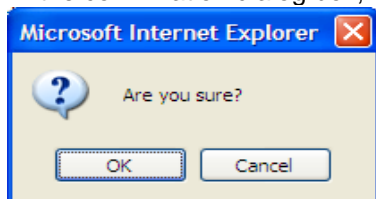
Select partition to connect USB, Video, or DVD respectively, then click the Apply button to take effect.

#	Partition Name	Status	Power Status	USB	Video	DVD
0	Partition#0	OK	On	<input type="radio"/>	<input type="radio"/>	<input type="radio"/>
2	Partition#2	OK	Standby	<input type="radio"/>	<input type="radio"/>	<input type="radio"/>
3	Partition#3	OK	Standby	<input type="radio"/>	<input type="radio"/>	<input type="radio"/>
4	Partition#4	OK	Standby	<input type="radio"/>	<input type="radio"/>	<input type="radio"/>
6	Partition#6	OK	On	<input type="radio"/>	<input type="radio"/>	<input type="radio"/>
8	Partition#8	OK	On	<input type="radio"/>	<input type="radio"/>	<input type="radio"/>
10	Partition#10	OK	Standby	<input type="radio"/>	<input type="radio"/>	<input type="radio"/>
12	Partition#12	OK	On	<input checked="" type="radio"/>	<input checked="" type="radio"/>	<input checked="" type="radio"/>
14	Partition#14	OK	On	<input type="radio"/>	<input type="radio"/>	<input type="radio"/>
Free				<input type="radio"/>	<input type="radio"/>	<input type="radio"/>

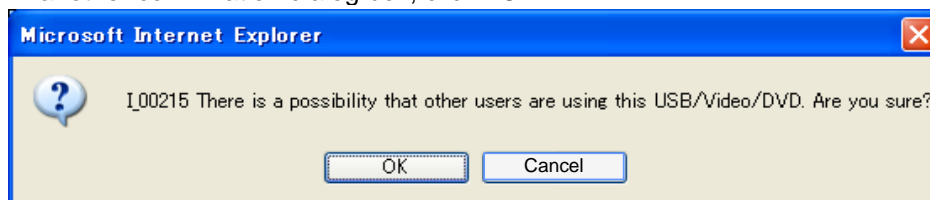
Apply Cancel

Partition > USB/Video/DVD Switch page (DVD switch selection)

In the confirmation dialog box, click <OK>.



In another confirmation dialog box, click <OK>.



In the completion dialog box, click <OK>.



8) Insert the Firmware CD into the DVD-ROM drive.

Preparation (Continued) ** Operation through KVM **

3.6.1-3 Start the EFI shell

From the Boot Option Maintenance menu for EFI displayed on the flat panel display screen, select "EFI Shell [Built-in]," and press the [Enter] key.

"EFI Shell [Built-in]" selected on the terminal software screen

```
EFI Boot Manager ver 1.10 [1.11]

Please select a boot option

Windows Server 2003, Datacenter
EFI Shell [Built-in]
DVD/ACPI (PNP0A03, 0) / Pci (1D|1) / Usb (0, 0) / Usb (1, 0)
Network/ACPI (PNP0A03, 0) / Pci (1E|0) / Pci (8|0) / Mac (000B5D6F801B)
Boot Option Maintenance
Setup Menu

Use ^ and v to change option(s). Use Enter to select an option
```

* Screenshot of the screen (The displayed menu varies depending on the user's settings.)

3.6.1-4 Confirm the file system (fs)

The next screen displayed is as shown below.

Confirm the fsN value assigned to the Firmware CD (here, it is fs0).

```
Loading.: EFI Shell [Built-in]
EFI Shell version 1.10 [1.11]
Device mapping table
fs0: ACPI (PNP0A03, 0) / Pci (1D|1) / Usb (0, 0) / Usb (0, 0) / CDR0M (Entry0) / HD (Part1, Sig00000000)
fs1 : ACPI (PNP0A03, 0) / Pci (1|1) / Pci (0|0) / Pci (1|0) / Scsi (Pun4, Lun0) / HD (Part1, Sig 41C4C48E-7253-4942-9F50-5547C7B1E6C4)
blk0 : ACPI (PNP0A03, 0) / Pci (1D|1) / Usb (0, 0) / Usb (0, 0)
blk1 : ACPI (PNP0A03, 0) / Pci (1D|1) / Usb (0, 0) / Usb (0, 0) / CDR0M (Entry0)
*** : *****
blk6 : ACPI (PNP0A03, 0) / Pci (1|1) / Pci (0|0) / Pci (1|0) / Scsi (Pun4, Lun0) / HD (Part3, Sig 715930EE-C30D-481F-BC83-83F17A640F30)

Shell>
```

If the fs number of the CD is not found:

Enter the following command from the EFI shell to reconnect the device.

shell> reconnect -r[Enter]

Upon the return to the EFI shell screen, enter the following command to display the device map again, and confirm the fs number assigned to the CD:

shell> map -r[Enter]

3.6.1-5 Confirm the Firmware CD

Move to the location indicated by the fs number assigned to the CD. Confirm that the CD is read normally by the ls command.

```
Shell>fs0:
fs0:\>ls
Directory of: fs0:¥

03/10/08  01:42a                4,224  README. ja_JP. EUC. txt
03/10/08  01:42a                4,350  README. ja_JP. SJIS. txt
03/10/08  01:42a                4,922  README. ja_JP. UTF-8. txt
03/10/08  01:42a                4,596  README. txt
03/24/08  03:54p <DIR>                2,048  PQ420
03/24/08  03:55p <DIR>                2,048  PQ480_440
03/24/08  03:55p <DIR>                2,048  PQ510A
03/24/08  03:56p <DIR>                2,048  PQ520
03/24/08  03:56p <DIR>                2,048  PQ520A_520X
03/24/08  03:57p <DIR>                2,048  PQ580_540
03/24/08  04:04p <DIR>                2,048  PQ580A_540A
          4 File(s)              18,092 bytes
          7 Dir(s)
```

Tool Startup

3.6.2-1 Confirm the EFI driver number for the Fibre Channel device

```
fs0:\> drivers -b
          T  D
D          Y C I
R          P F A
V  VERSION  E G G #D #C DRIVER NAME          IMAGE NAME
== ==
18 00000010 B - - 5 42 Pci Bus Driver
** *****
** *****
22 00031131 D X X 2 - Emulex SCSI Pass Thru Driver  PciRom Seg=000000
** ***** *
```

Confirm the numerical value NN at the beginning of the "Emulex SCSI Pass Thru Driver" line (here, it is 22).

Notes:

1. The value in the IMAGE NAME column varies depending on the EFI Driver version.
2. If "Emulex SCSI Pass Thru Driver" is displayed on multiple lines with different version numbers, see Section 3.6.14, "Starting the tool in an environment with various EFI drivers," and follow the steps in it.

3.6.2-2 Enter the command for startup

```
fs0:\> drvcfg -s 22
```

The number entered after "-s" is the numerical value (NN) confirmed in the step explained in Section 3.6.2-1.

3.6.2-3 Confirm startup

Based on the screen displayed for startup, such as shown below, confirm that the tool has started.

```
-----
Emulex Fibre Channel EFI-Bios Utility, Ver: 3.11x1
-----

Emulex Adapters in this System: 001 thru002

001: LP11000    PCI-X  133MHz Bus#: 0F Dev#: 01 Func#: 00
002: LP11000    PCI-X  133MHz Bus#: 10 Dev#: 01 Func#: 00
```

Note: In the above screenshot, the system is equipped with two 4G (Single Port) Fibre Channel adapter cards. Each adapter card is displayed with "Func#:00."
If the system is equipped with a 4G (Dual Port) Fibre Channel adapter card, the card is displayed on two lines, with "Func#00" on the first (top) line and "Func#:01" on the second (bottom) line.

Update

3.6.3-1 Select the adapter to be updated

If the card is a Dual Port card, apply the update to every port (Func#: xx) displayed. Select the adapter with the up (↑) and down (↓) arrow keys, and press [Enter].

```
-----
Emulex Fibre Channel EFI-Bios Utility, Ver: 3.11x1
-----

Emulex Adapters in this System: 001 thru002

001: LP11000    PCI-X  133MHz Bus#: 0F Dev#: 01 Func#: 00
002: LP11000    PCI-X  133MHz Bus#: 10 Dev#: 01 Func#: 00
```

Note: Each page of the screen displays lines for up to eight ports. To change the page for a system that has nine or more ports, use the right (<-->) and left (-->) arrow keys.

3.6.3-2 Select "Firmware Update"

```
-----
Emulex FC EFI-Bios Utility, Ver: 3.11x1
-----

1.Setup Utility
2.Firmware Update
```

Select "2. Firmware Update" with the up (↑) and down (↓) arrow keys, and press [Enter]. The following screen is displayed.

```
-----
Emulex FC EFI-Bios Firmware Update Utility, Ver: 3.11x1
-----

001: LP11000    PCI-X  133MHz Bus#: 0F Dev#: 01 Func#: 00
      EFI Boot : **3.11X1      SLI - 1   : B1D2.10A7
      Firmware : **2.10A7      SLI - 2   : B2D2.10A7
      Port Name : 10000000C945CA68 Kernel  : 1.40A3
-----

Directry Path : \
```

3.6.3-3 Confirm the version number before the update

Note: The first two characters in each version number vary depending on the adapter card. The characters are represented by "***" in the following explanation.

Confirm the version number on the "Firmware" line before the update.
Number displayed at "Firmware" for confirmation: **2.10A7 (in this example)

3.6.3-4 Perform the update

Specify the directory path (fs* is unnecessary), and press [Enter]. Specify the file name on the next line, and press [Enter].

If the specified path is incorrect, press [Enter] to go back to that line, and repeat this operation.

For the folder hierarchy of each adapter card, see Appendix, "Lists of the Folder Hierarchy on the Firmware CD".

```
-----
Emulex FC EFI-Bios Firmware Update Utility, Ver: 3.11x1
-----
001: LP11000    PCI-X 133MHz Bus#: 0F Dev#: 01 Func#: 00
      EFI Boot  : **3.11X1          SLI - 1   : B1D2.10A7
      Firmware  : **2.10A7          SLI - 2   : B2D2.10A7
      Port Name : 10000000C945CA68  Kernel   : 1.40A3
-----
Directry Path  : \PQ580A_540A\Emulex_FC\MC08FC31\Firm_2.70A5
Filename       : bd270a5.all
```

<Update the firmware>

The following screen is displayed. The update is completed.

```
Directry Path  : \PQ580A_540A\Emulex_FC\MC08FC31\Firm_2.70A5
Filename       : bd270a5.all
File Open      : Done
Validate Adapter: Done
Flash Erase    : Done
Flash Program  : Done
WakeUp Parameter: Updated
Press any Key to Return to Previous Menu ...
```

3.6.3-5 Complete the update procedure

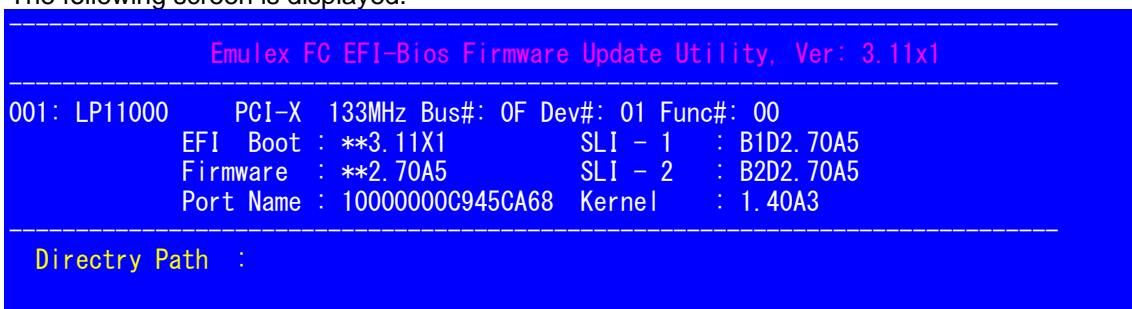
Press any key to return to the screen displayed for the step in Section 3.6.3-2.

Confirmation

3.6.4-1 Select "Firmware Update"



Select "2. Firmware Update" with the up (↑) and down (↓) arrow keys, and press [Enter]. The following screen is displayed.

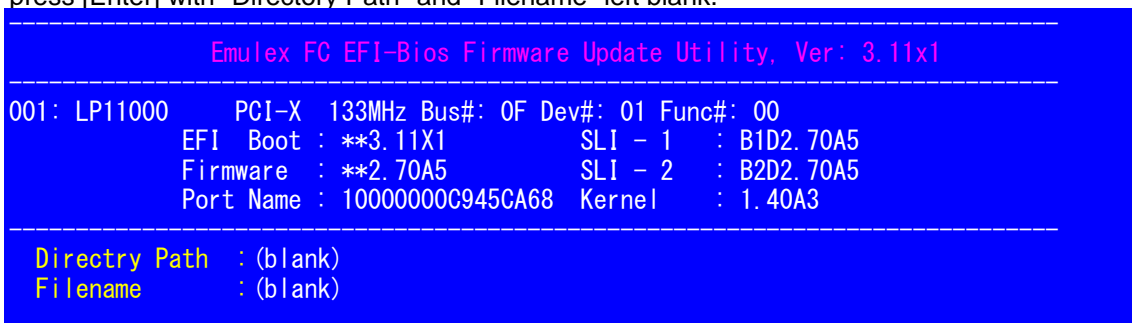


3.6.4-2 Confirm the version number after the update

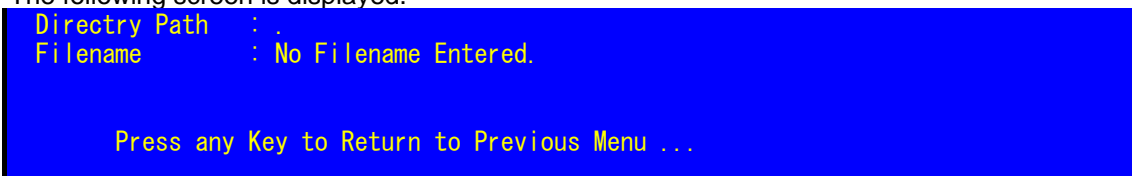
Note: The first two characters in each version number vary depending on the adapter card. The characters are represented by "***" in the following explanation. For details, see the rightmost column in the tables in Appendix, "Lists of the Folder Hierarchy on the Firmware CD".

Confirm the version number on the "Firmware" line.
Number displayed at "Firmware" for confirmation: **2.70A5 (in this example)

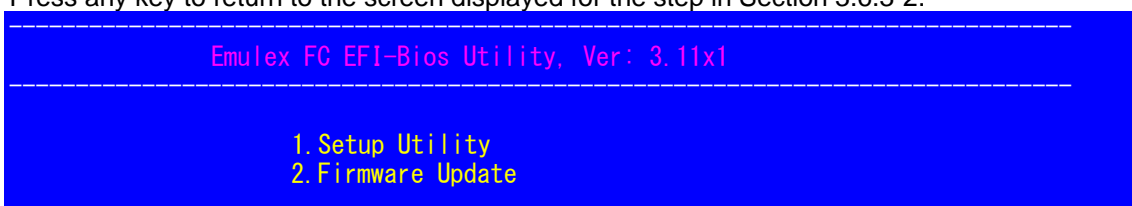
Upon completing confirmation of the final version number displayed for the update on the screen, press [Enter] with "Directory Path" and "Filename" left blank.



The following screen is displayed.



Press any key to return to the screen displayed for the step in Section 3.6.3-2.



Press the [Esc] key to return to the screen displayed in the step in Section 3.6.2-3.

```
-----
Emulex Fibre Channel EFI-Bios Utility, Ver: 3.11x1
-----

Emulex Adapters in this System: 001 thru002

001: LP11000      PCI-X  133MHz Bus#: 0F Dev#: 01 Func#: 00
002: LP11000      PCI-X  133MHz Bus#: 10 Dev#: 01 Func#: 00
```

Updating another adapter

Note: If the card is a Dual Port card, perform an update for the other port.

3.6.5 Updating another adapter

If adapters to be updated remain, select it with the up (↑) and down (↓) arrow keys, and press [Enter].

```
-----
Emulex Fibre Channel EFI-Bios Utility, Ver: 3.11x1
-----

Emulex Adapters in this System: 001 thru002

001: LP11000      PCI-X  133MHz Bus#: 0F Dev#: 01 Func#: 00
002: LP11000      PCI-X  133MHz Bus#: 10 Dev#: 01 Func#: 00
```

The screen returns to that shown in the step in Section 3.6.3-2.

Exiting the EFI Shell

3.6.6-1 Exit the tool

Press [Enter] with "Directory Path" and "Filename" left blank.

```
-----
Emulex Fibre Channel EFI-Bios Utility, Ver: 3.11x1
-----

Emulex Adapters in this System: 001 thru002

001: LP11000      PCI-X  133MHz Bus#: 0F Dev#: 01 Func#: 00
002: LP11000      PCI-X  133MHz Bus#: 10 Dev#: 01 Func#: 00
```

The following screen is displayed.

```
Directory Path   : .
Filename        : No Filename Entered.

Press any Key to Return to Previous Menu ...
```

Press any key to return to the screen displayed for the step in Section 3.6.3-2.

```
-----
Emulex FC EFI-Bios Utility, Ver: 3.11x1
-----

1.Setup Utility
2.Firmware Update
```

Press the [Esc] key to return to the screen displayed for the step in Section 3.6.3-1.

```
-----
Emulex Fibre Channel EFI-Bios Utility, Ver: 3.11x1
-----

Emulex Adapters in this System: 001 thru002

001: LP11000      PCI-X  133MHz Bus#: 0F Dev#: 01 Func#: 00
002: LP11000      PCI-X  133MHz Bus#: 10 Dev#: 01 Func#: 00
```

Press the [Esc] key again to return to the EFI shell (exiting the tool).

```
fs0:\>
```

3.6.6-2 Enter "exit" in the EFI shell

Enter "exit" in the EFI shell to return to the EFI Boot Manager screen (the following screen).

```
EFI Boot Manager ver 1.10 [1.11]

Please select a boot option

Windows Server 2003, Datacenter
EFI Shell [Built-in]
DVD/Acpi (PNP0A03, 0)/Pci (1D|1)/Usb (0, 0)/Usb (1, 0)
Network/Acpi (PNP0A03, 0)/Pci (1E|0)/Pci (8|0)/Mac (000B5D6F801B)
Boot Option Maintenance Menu
Setup Menu

Use ^ and v to change option(s). Use Enter to select an option
```

3.6.6-3 Eject the Firmware CD

**Eject the Firmware CD from the KVM DVD-ROM drive.
Exit from the terminal software screen.**

Preparation (Continued) ** Operation through Terminal Software **

<Connect to the console>

- 1) Set the Boot Selector mode with the Web-UI. (For details of this step, see "Preparation.")
- 2) <MMB operation> From the menu, select [Partition] --> [Console Redirection Switch]
(In PRIMEQUEST 510A, [System] --> [Console Redirection] --> [Console Redirection Switch])
to display the Console Redirection Switch page, and set [MMB] under "Connect to" for the partition.
(When you have changed it, click <Apply>.)

System **Partition** User Administration Network Configuration Maintenance Logout

>Partition >Console Redirection Switch

Console Redirection Switch

Select the destination of serial output, and then click the Apply button to take effect.

#	Partition Name	Status	Power Status	Connect to	Telnet/SSH	Port#
0	WinDev01	OK	Standby	<input checked="" type="radio"/> COM <input type="radio"/> MMB	<input type="radio"/> None <input type="radio"/> Telnet <input type="radio"/> SSH	7000
1		None		<input checked="" type="radio"/> COM <input type="radio"/> MMB	<input type="radio"/> None <input type="radio"/> Telnet <input type="radio"/> SSH	7001
2	NetCOBOL1	OK	On	<input checked="" type="radio"/> COM <input type="radio"/> MMB	<input type="radio"/> None <input type="radio"/> Telnet <input type="radio"/> SSH	7002
3	ACM	OK	On	<input checked="" type="radio"/> COM <input type="radio"/> MMB	<input type="radio"/> None <input type="radio"/> Telnet <input type="radio"/> SSH	7003
4	GDS-1	OK	On	<input checked="" type="radio"/> COM <input type="radio"/> MMB	<input type="radio"/> None <input type="radio"/> Telnet <input type="radio"/> SSH	7004
5		None		<input checked="" type="radio"/> COM <input type="radio"/> MMB	<input type="radio"/> None <input type="radio"/> Telnet <input type="radio"/> SSH	7005
6	IA3-SCSI	OK	Standby	<input checked="" type="radio"/> COM <input type="radio"/> MMB	<input type="radio"/> None <input type="radio"/> Telnet <input type="radio"/> SSH	7006
7		None		<input checked="" type="radio"/> COM <input type="radio"/> MMB	<input type="radio"/> None <input type="radio"/> Telnet <input type="radio"/> SSH	7007
8	MSCS1	OK	Standby	<input checked="" type="radio"/> COM <input type="radio"/> MMB	<input type="radio"/> None <input type="radio"/> Telnet <input type="radio"/> SSH	7008
9		None		<input checked="" type="radio"/> COM <input type="radio"/> MMB	<input type="radio"/> None <input type="radio"/> Telnet <input type="radio"/> SSH	7009
10	MSCS2	OK	Standby	<input checked="" type="radio"/> COM <input type="radio"/> MMB	<input type="radio"/> None <input type="radio"/> Telnet <input type="radio"/> SSH	7010
11		None		<input checked="" type="radio"/> COM <input type="radio"/> MMB	<input type="radio"/> None <input type="radio"/> Telnet <input type="radio"/> SSH	7011
12	IA3-Intel#0	OK	On	<input checked="" type="radio"/> COM <input type="radio"/> MMB	<input type="radio"/> None <input type="radio"/> Telnet <input type="radio"/> SSH	7012
13		None		<input checked="" type="radio"/> COM <input type="radio"/> MMB	<input type="radio"/> None <input type="radio"/> Telnet <input type="radio"/> SSH	7013
14	10GEth#1_131	OK	On	<input checked="" type="radio"/> COM <input type="radio"/> MMB	<input type="radio"/> None <input type="radio"/> Telnet <input type="radio"/> SSH	7014
15		None		<input checked="" type="radio"/> COM <input type="radio"/> MMB	<input type="radio"/> None <input type="radio"/> Telnet <input type="radio"/> SSH	7015

Apply Cancel

- 3) Start the terminal software.

When it connects with Telnet,

Set IP address : Set the virtual IP address of MMB

Set TCP port : Set the port number (7000~) for each partition

When it connects with SSH, specify SSH Version2 (SSH2).

Start a console by the above operation.

login: CE account

Password: CE account password

Terminal size: 80x24

3.6.7-1 Start the EFI shell

From the Boot Option Maintenance menu for EFI displayed in the terminal software window, select "EFI Shell [Built-in]," and press the [Enter] key.

"EFI Shell [Built-in]" selected in the terminal software window

```
EFI Boot Manager ver 1.10 [1.13]
Please select a boot option

Windows Server 2003, Datacenter
EFI Shell [Built-in]
DVD/ACPI(PNP0A03,0)/PCI(1D|1)/USB(0, 0)/USB(1, 0)
Network/ACPI(PNP0A03,0)/PCI(1E|0)/PCI(8|0)/MAC(000B5D6E01BF)
Boot Option Maintenance Menu
Setup Menu

Use ^ and v to change option(s). Use Enter to select an option.
```

* Screenshot of the window (The displayed menu varies depending on the user's settings.)

3.6.7-2 Confirm the file system (fs)

The next window displayed is as shown below.

Confirm the fsN value assigned to the Firmware CD (here, it is fs0).

```
Loading.: EFI Shell [Built-in]
EFI Shell version 1.10 [1.13]
Device mapping table
fs0 : ACPI(PNP0A03,0)/PCI(1D|1)/USB(0, 0)/USB(1, 0)/CDROM(Entry0)/HD(Part1,Signature00000000)
fs1 : ACPI(PNP0A03,0)/PCI(F|1)/PCI(0|2)/PCI(1|0)/Scsi(Pun0,Lun0)/HD(Part1,SignatureDEEFD388-C5E0-463F-BE91-14C2B48424BA)
blk0 : ACPI(PNP0A03,0)/PCI(1D|1)/USB(0, 0)/USB(1, 0)
blk1 : ACPI(PNP0A03,0)/PCI(1D|1)/USB(0, 0)/USB(1, 0)/CDROM(Entry0)
blk2 : ACPI(PNP0A03,0)/PCI(1D|1)/USB(0, 0)/USB(1, 0)/CDROM(Entry0)/HD(Part1,Signature00000000)
blk3 : ACPI(PNP0A03,0)/PCI(F|1)/PCI(0|2)/PCI(1|0)/Scsi(Pun0,Lun0)
blk4 : ACPI(PNP0A03,0)/PCI(F|1)/PCI(0|2)/PCI(1|0)/Scsi(Pun0,Lun0)/HD(Part1,SignatureDEEFD388-C5E0-463F-BE91-14C2B48424BA)
blk5 : ACPI(PNP0A03,0)/PCI(F|1)/PCI(0|2)/PCI(1|0)/Scsi(Pun0,Lun0)/HD(Part2,SignatureA0E787F6-F0AE-4EB7-8820-6A82F367C6D0)
blk6 : ACPI(PNP0A03,0)/PCI(F|1)/PCI(0|2)/PCI(1|0)/Scsi(Pun0,Lun0)/HD(Part3,SignatureDC040D9A-9AA1-48B4-88CB-5801C2146A65)
blk7 : ACPI(PNP0A03,0)/PCI(F|1)/PCI(0|2)/PCI(1|0)/Scsi(Pun0,Lun0)/HD(Part4,SignatureBD728977-81FA-42DF-811F-B67DBF89B9B2)
Shell>
Shell>
Shell>
Shell>
```

If the fs number of the CD is not found:

Enter the following command from the EFI shell to reconnect the device.

```
shell> reconnect -r[Enter]
```

Upon the return to the EFI shell screen, enter the following command to display the device map again, and confirm the fs number assigned to the CD:

```
shell> map -r[Enter]
```

3.6.7-3 Confirm the firmware CD

Move to the location indicated by the fs number assigned to the CD. Confirm that the CD is read normally by the ls command.

```
fs0:\> ls
Directory of: fs0:\#

03/10/08 01:42a      4,224 README.ja_JP.EUC.txt
03/10/08 01:42a      4,350 README.ja_JP.SJIS.txt
03/10/08 01:42a      4,922 README.ja_JP.UTF-8.txt
03/10/08 01:42a      4,596 README.txt
03/24/08 03:54p <DIR>          2,048 PQ420
03/24/08 03:55p <DIR>          2,048 PQ480_440
03/24/08 03:55p <DIR>          2,048 PQ510A
03/24/08 03:56p <DIR>          2,048 PQ520
03/24/08 03:56p <DIR>          2,048 PQ520A_520X
03/24/08 03:57p <DIR>          2,048 PQ580_540
03/24/08 04:04p <DIR>          2,048 PQ580A_540A
          4 File(s)          18,092 bytes
          7 Dir(s)
```

```
fs0:\>
fs0:\>
fs0:\>
fs0:\>
fs0:\>
fs0:\>
```

Tool Startup

3.6.8-1 Confirm the EFI driver number for the Fibre Channel device

Command: drivers -b

```
fs0:\> drivers -b
=====
D  Y C I
R  P F A
V  VERSION  E G G #D #C DRIVER NAME IMAGE NAME
=====
00D 00000010 B - - 2 38 PCI Bus Driver PciBus
00F 00000010 D - - 1 - PC-AT ISA Device Enumeration Driver PcatIsaAcpi
010 00000010 B - - 1 2 ISA Bus Driver IsaBus
011 00000010 B - - 1 1 ISA Serial Driver IsaSerial
013 00000119 D - - 1 - ATI Rage XL UGA Driver XL_IPF_119.efi
014 00000010 D - - 1 - UGA Console Driver GraphicsConsole
015 00000010 D - - 3 - Usb Uhci Driver UsbUhci
018 00000010 B - - 1 1 Serial Terminal Driver Terminal
017 00000010 D - - 2 - Platform Console Management Driver ConPlatform
018 00000010 D - - 2 - Platform Console Management Driver ConPlatform
019 00000010 B - - 2 2 Console Splitter Driver ConSplitter
01A 00000010 B - - 1 1 Console Splitter Driver ConSplitter
01B 00000010 B - - 2 2 Console Splitter Driver ConSplitter
01C 00000010 B - - 2 2 Console Splitter Driver ConSplitter
020 00000010 B - - 3 6 USB Bus Driver UsbBus
021 00000010 D - - 1 - Usb Keyboard Driver UsbKeyboard
022 00031131 D X X 2 - Emulex SCSI Pass Thru Driver PciRom Seg=000000
035 00000010 D - - 1 - Generic USB Mass Storage Driver UsbMassStorage
=====
```

Confirm the numerical value NN at the beginning of the "Emulex SCSI Pass Thru Driver" line (here, it is 22).

Notes:

1. The value in the IMAGE NAME column varies depending on the EFI Driver version.
2. If "Emulex SCSI Pass Thru Driver" is displayed on multiple lines with different version numbers, see Section 3.6.14, "Starting the tool in an environment with various EFI drivers," and follow the steps in it.

3.6.8-2 Enter the command for startup

Command: drvcfg -s 22

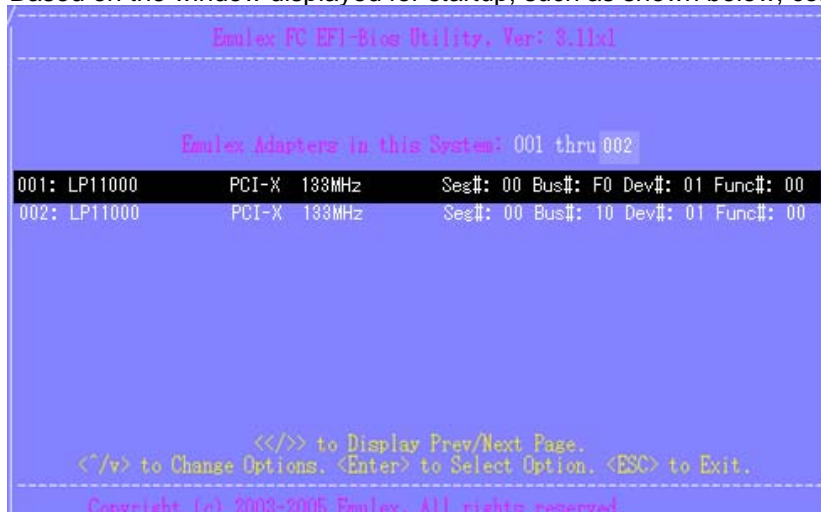
```
019 00000010 B - - 2 2 Console Splitter Driver ConSplitter
01A 00000010 B - - 1 1 Console Splitter Driver ConSplitter
01B 00000010 B - - 2 2 Console Splitter Driver ConSplitter
01C 00000010 B - - 2 2 Console Splitter Driver ConSplitter
020 00000010 B - - 3 6 USB Bus Driver UsbBus
021 00000010 D - - 1 - Usb Keyboard Driver UsbKeyboard
022 00031131 D X X 2 - Emulex SCSI Pass Thru Driver PciRom Seg=000000
035 00000010 D - - 1 - Generic USB Mass Storage Driver UsbMassStorage
Press ENTER to continue, 'q' to exit:
036 00000010 D - - 1 - Usb Bot Mass Storage Driver UsbBot
037 00000010 ? - - - - Usb Cbi1 Mass Storage Driver UsbCbi1
038 00000010 ? - - - - Usb Cbi0 Mass Storage Driver UsbCbi0
039 00000010 D - - 2 - Generic Disk I/O Driver DiskIo
03A 00000010 B - - 1 1 Partition Driver(MBR/GPT/El Torito) Partition
03B 00000010 D - - 1 - FAT File System Driver Fat
03C 00000010 B - - 2 2 Intel(R) PRO 100 UNDI Driver Undi
03D 00000010 D - - 4 - Simple Network Protocol Driver Snp3264
03E 00000010 D - - 4 - PXE Base Code Driver PxeBc
03F 00000010 D - - 4 - PXE DHCPv4 Driver PxeDhcp4
040 00000010 D - - 1 - Usb Mouse Driver UsbMouse
042 01050000 B X X 2 1 LSI Logic Fusion MPT Driver lsimptfw.efi
046 00070700 B X X 2 2 Broadcom Gigabit Ethernet Driver b57undi64.efi

fs0:\> drvcfg -s 22
```

The number entered after "-s" is the numerical value (NN) confirmed in the in the step explained in Section 3.6.8-1.

3.6.8-3 Confirm startup

Based on the window displayed for startup, such as shown below, confirm that the tool has started.



Note: In the above screenshot, the system is equipped with two 4G (Single Port) Fibre Channel adapter cards. Each adapter card is displayed with "Func#:00."

If the system is equipped with a 4G (Dual Port) Fibre Channel adapter card, the card is displayed on two lines, with "Func#00" on the first (top) line and "Func#:01" on the second (bottom) line.

Update

3.6.9-1 Select the adapter to be updated

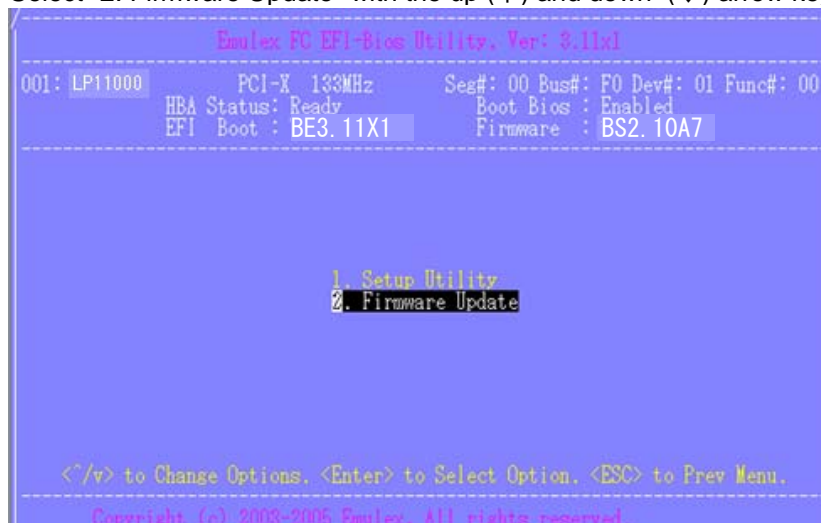
If the card is a Dual Port card, apply the update to every port (Func#: xx) displayed. Select the adapter with the up (↑) and down (↓) arrow keys, and press [Enter].



Note: Each page of the window displays lines for up to eight ports. To change the page for a system that has nine or more ports, use the right (<--) and left (-->) arrow keys.

3.6.9-2 Select "Firmware Update"

Select "2. Firmware Update" with the up (↑) and down (↓) arrow keys, and press [Enter].



The following window is displayed.

```
Emulex FC EFI-Bios Firmware Update Utility, Ver: 3.11x1
001: LP11000      PCI-X 133MHz      Seg#: 00 Bus#: F0 Dev#: 01 Func#: 00
      EFI Boot : **3.11X1      SLI - 1 : B1D2.10A7
      Firmware : **2.10A7      SLI - 2 : B2D2.10A7
      Port Name : 10000000C93F7A99 Kernel : 1.40A3

      Directory Path      :

Copyright (c) 2003-2005 Emulex. All rights reserved.
```

3.6.9-3 Confirm the version number before the update

Note: The first two characters in each version number vary depending on the adapter card. The characters are represented by "*" in the following explanation.

Confirm the version number on the "Firmware" line before the update.
Number displayed at "Firmware" for confirmation: **2.10A7 (in this example)

3.6.9-4 Perform the update

Specify the directory path (fs* is unnecessary), and press [Enter]. Specify the file name on the next line, and press [Enter].

If the specified path is incorrect, press [Enter] to go back to that line, and repeat this operation.

For the folder hierarchy of each adapter card, see Appendix, "Lists of the Folder Hierarchy on the Firmware CD".

<Firmware update>

```
Emulex FC EFI-Bios Firmware Update Utility, Ver: 3.11x1
001: LP11000      PCI-X 133MHz      Seg#: 00 Bus#: F0 Dev#: 01 Func#: 00
      EFI Boot : BE3.11X1      SLI - 1 : B1D2.10A7
      Firmware : BS2.10A7      SLI - 2 : B2D2.10A7
      Port Name : 10000000C93F7A99 Kernel : 1.40A3

      Directory Path      : \\PQ380A340A\Emulex_FCMC08\CD\Firm_2.70A3
      Filename           : b0270a3a1

Copyright (c) 2003-2005 Emulex. All rights reserved.
```

<Update the firmware>

The following window is displayed. The update is completed.

```
Emulex FC EFI-Bios Firmware Update Utility, Ver: 3.11x1
-----
001: LP11000      PCI-X 133MHz      Seg#: 00 Bus#: F0 Dev#: 01 Func#: 00
      EFI Boot : BE3.11X1      SLI - 1 : B1D2.10A7
      Firmware : BS2.10A7      SLI - 2 : B2D2.10A7
      Port Name : 10000000C93F7A99 Kernel : 1.40A3
-----

Directory Path : \POS80A_540A\Emulex_FC\MCD08FC31\Firm_2_70A5
Filename       : bd270a5.a11
File Open      : Done.
Validate Adapter : Done.
Flash Erase    : Done.
Flash Program  : Done.
WakeUp Parameter : Updated.

Press any Key to Return to Previous Menu ...

Copyright (c) 2002-2005 Emulex. All rights reserved.
```

3.6.9-5 Complete the update procedure

Press any key to return to the window displayed for the step in Section 3.6.9-2.

Confirmation

3.6.10-1 Select "Firmware Update"

Select "2. Firmware Update" with the up (↑) and down (↓) arrow keys, and press [Enter].

```
Emulex FC EFI-Bios Utility, Ver: 3.11x1
-----
001: LP11000      PCI-X 133MHz      Seg#: 00 Bus#: F0 Dev#: 01 Func#: 00
      HBA Status: Ready      Boot Bios : Enabled
      EFI Boot : BE3.11X1      Firmware  : BS2.70A5
-----

1. Setup Utility
2. Firmware Update

<^/v> to Change Options. <Enter> to Select Option. <ESC> to Prev Menu.
Copyright (c) 2003-2005 Emulex. All rights reserved.
```

The following window is displayed.

```
Emulex FC EFI-Bios Firmware Update Utility, Ver: 3.11x1
-----
001: LP11000      PCI-X 133MHz      Seg#: 00 Bus#: F0 Dev#: 01 Func#: 00
      EFI Boot : **3.11X1      SLI - 1 : B1D2.70A5
      Firmware : **2.70A5      SLI - 2 : B2D2.70A5
      Port Name : 10000000C93F7A99 Kernel : 1.40A3
-----

Directory Path      :

Copyright (c) 2003-2005 Emulex. All rights reserved.
```

3.6.10-2 Confirm the version number after the update

Note: The first two characters in each version number vary depending on the adapter card. The characters are represented by "*" in the following explanation. For details, see the rightmost column in the tables in Appendix, "Lists of the Folder Hierarchy on the Firmware CD".

Confirm the version number on the "Firmware" line.
Number displayed at "Firmware" for confirmation: **2.70A5 (in this example)

Upon completing confirmation of the final version number displayed for the update in the window, press [Enter] with "Directory Path" and "Filename" left blank. The following window is displayed.

```
Emulex FC EFI-Bios Firmware Update Utility, Ver: 3.11x1
-----
001: LP11000      PCI-X 133MHz      Seg#: 00 Bus#: F0 Dev#: 01 Func#: 00
      EFI Boot : **3.11X1      SLI - 1 : B1D2.70A5
      Firmware : **2.70A5      SLI - 2 : B1D2.70A5
      Port Name : 10000000C93F7A99 Kernel : 1.40A3
-----

Directory Path :
Filename       : No Filename Entered.

Press any Key to Return to Previous Menu ...
-----
Copyright (c) 2003-2006 Emulex. All rights reserved.
```

Press any key to return to the window displayed for the step in Section 3.6.9-2.

```
Emulex FC EFI-Bios Utility, Ver: 3.11x1
-----
001: LP11000      PCI-X 133MHz      Seg#: 00 Bus#: F0 Dev#: 01 Func#: 00
      HBA Status: Ready      Boot Bios : Enabled
      EFI Boot : BE3.11X1      Firmware : BS2.70A5
-----

1. Setup Utility
2. Firmware Update

<^/v> to Change Options. <Enter> to Select Option. <ESC> to Prev Menu.
-----
Copyright (c) 2003-2006 Emulex. All rights reserved.
```

Updating another adapter

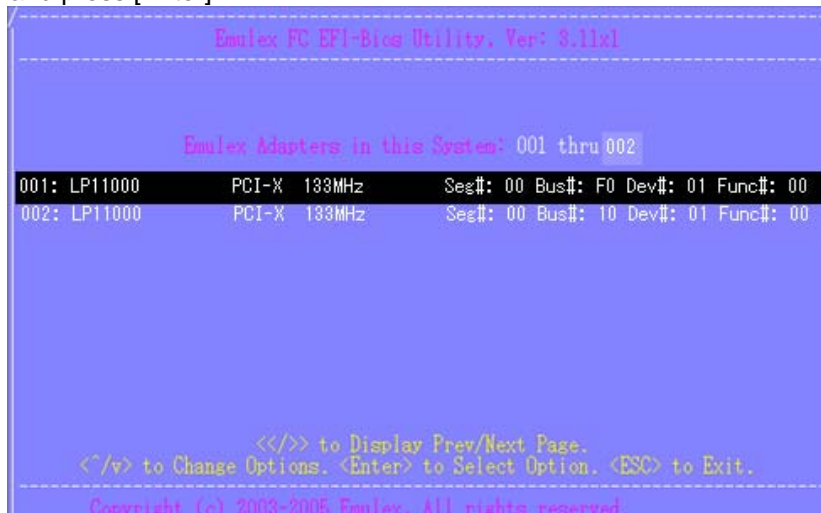
Note: If the card is a Dual Port card, perform an update for the other port.

3.6.11 Updating another adapter

Press the [Esc] key to return to the window displayed for the step in Section 3.6.9-1.



If adapters to be updated remain, select it with the up (↑) and down (↓) arrow keys, and press [Enter].



The window returns to that displayed for the step in Section 3.6.9-2.

Exiting the EFI Shell

3.6.12-1 Exit the tool

Press [Enter] with "Directory Path" and "Filename" left blank.
The following window is displayed.

```
Emulex FC EFI-Bios Firmware Update Utility, Ver: 3.11x1
-----
001: LP11000    PCI-X 133MHz    Seg#: 00 Bus#: F0 Dev#: 01 Func#: 00
      EFI Boot : ***3.11X1    SLI - 1 : B1D2.70A5
      Firmware : ***2.70A5    SLI - 2 : B1D2.70A5
      Port Name : 10000000C93F7A99 Kernel : 1.40A3
-----

Directory Path : .
Filename       : No Filename Entered.

Press any Key to Return to Previous Menu ...

Copyright (c) 2003-2005 Emulex. All rights reserved.
```

Press any key to return to the window displayed for the step in Section 3.6.9-2.

```
Emulex FC EFI-Bios Utility, Ver: 3.11x1
-----
001: LP11000    PCI-X 133MHz    Seg#: 00 Bus#: F0 Dev#: 01 Func#: 00
      HBA Status: Ready      Boot Bios : Enabled
      EFI Boot : BE3.11X1    Firmware : BS2.70A5
-----

1. Setup Utility
2. Firmware Update

<^/v> to Change Options. <Enter> to Select Option. <ESC> to Prev Menu.

Copyright (c) 2003-2005 Emulex. All rights reserved.
```

Press the [Esc] key to return to the window displayed for the step in Section 3.6.9-1.

```
Emulex FC EFI-Bios Utility, Ver: 3.11x1
-----

Emulex Adapters in this System: 001 thru 002
-----
001: LP11000    PCI-X 133MHz    Seg#: 00 Bus#: F0 Dev#: 01 Func#: 00
002: LP11000    PCI-X 133MHz    Seg#: 00 Bus#: 10 Dev#: 01 Func#: 00
-----

<</>> to Display Prev/Next Page.
<^/v> to Change Options. <Enter> to Select Option. <ESC> to Exit.

Copyright (c) 2003-2005 Emulex. All rights reserved.
```

Press the [Esc] key again to return to the EFI shell (exiting the tool).

```
Drv[22] Ctrl[ALL] Lang[eng] ~ Options set. Action Required is None
None
f10:~>
```

3.6.12-2 Enter "exit" in the EFI shell

Enter "exit" in the EFI shell to return to the EFI Boot Manager window (the following window).

```
EFI Boot Manager ver 1.10 [1.13]

Please select a boot option

Windows Server 2003, Datacenter
EFI Shell [Built-in]
DVD/Acpi(PNP0A03,0)/Pci(1D|1)/Usb(0, 0)/Usb(1, 0)
Network/Acpi(PNP0A03,0)/Pci(1E|0)/Pci(8|0)/Mac(000B5D6E01BF)
Boot Option Maintenance Menu
Setup Menu

Use ^ and v to change option(s). Use Enter to select an option
```

3.6.12-3 Eject the Firmware CD

Eject the Firmware CD from the KVM DVD-ROM drive.
Exit the terminal software, closing its window.

Terminating the Web-UI Connection

3.6.13 Setting "Power Off" for the partition

1) For the partition that was set to "Power On" for the Fibre Channel card firmware update, set "Power Off".
[Part 1]

On the Partition > Power Control page (System > Power Control page in PRIMEQUEST 510A), set [Power Off] under "Power Control" for the partition, and click <Apply>.

System Partition Switch User Administration Network Configuration Maintenance Logout

>Partition >Power Control

Power Control

Refresh Help

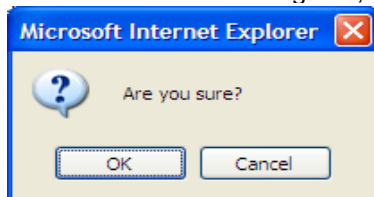
Select a Power Control option for one or more partitions, then click the Apply button to take effect.

#	Partition Name	Status	Power Status	System Progress	Power Control	Force Power Off Delay
0	Partition#0	OK	On	OS Running	(Not specified)	<input type="checkbox"/> <input type="checkbox"/> min
2	Partition#2	OK	Standby	Power Off	(Not specified)	<input type="checkbox"/> <input type="checkbox"/> min
3	Partition#3	OK	Standby	Power Off	(Not specified)	<input type="checkbox"/> <input type="checkbox"/> min
4	Partition#4	OK	Standby	Power Off	(Not specified)	<input type="checkbox"/> <input type="checkbox"/> min
6	Partition#6	OK	On	OS Running	(Not specified)	<input type="checkbox"/> <input type="checkbox"/> min
8	Partition#8	OK	On	OS Running	(Not specified)	<input type="checkbox"/> <input type="checkbox"/> min
10	Partition#10	OK	Standby	Power Off	(Not specified)	<input type="checkbox"/> <input type="checkbox"/> min
12	Partition#12	OK	On	POST 1094h	Power Off	<input type="checkbox"/> <input type="checkbox"/> min
14	Partition#14	OK	On	OS Running	(Not specified)	<input type="checkbox"/> <input type="checkbox"/> min

Apply Cancel

Partition > Power Control page ("Power Off" set)

In the confirmation dialog box, click <OK>.



- 2) For the partition that was set to "Power On" for the Fibre Channel card firmware update, set "Power Off".
[Part 2]
Confirm that the partition has "Power Off In Progress" displayed in the System Progress column after "Power Off" is set.

System | Partition | Switch | User Administration | Network Configuration | Maintenance Logout

>Partition >Power Control

Power Control Refresh Help

Select a Power Control option for one or more partitions, then click the Apply button to take effect.

#	Partition Name	Status	Power Status	System Progress	Power Control	Force Power Off Delay
0	Partition#0	OK	On	OS Running	(Not specified)	<input type="checkbox"/> min
2	Partition#2	OK	Standby	Power Off	(Not specified)	<input type="checkbox"/> min
3	Partition#3	OK	Standby	Power Off	(Not specified)	<input type="checkbox"/> min
4	Partition#4	OK	Standby	Power Off	(Not specified)	<input type="checkbox"/> min
6	Partition#6	OK	On	OS Running	(Not specified)	<input type="checkbox"/> min
8	Partition#8	OK	On	OS Running	(Not specified)	<input type="checkbox"/> min
10	Partition#10	OK	Standby	Power Off	(Not specified)	<input type="checkbox"/> min
12	Partition#12	OK	On	Power Off In Progress	(Not specified)	<input type="checkbox"/> min
14	Partition#14	OK	On	OS Running	(Not specified)	<input type="checkbox"/> min

Apply Cancel

Partition > Power Control page ("Power Off" operation started)

- 3) For the partition that was set to "Power On" for the Fibre Channel card firmware update, set "Power Off".
[Part 3]
Confirm that the partition has "Power Off" displayed finally in the System Progress column after "Power Off" is set.

System | Partition | Switch | User Administration | Network Configuration | Maintenance Logout

>Partition >Power Control

Power Control Refresh Help

Select a Power Control option for one or more partitions, then click the Apply button to take effect.

#	Partition Name	Status	Power Status	System Progress	Power Control	Force Power Off Delay
0	Partition#0	OK	On	OS Running	(Not specified)	<input type="checkbox"/> min
2	Partition#2	OK	Standby	Power Off	(Not specified)	<input type="checkbox"/> min
3	Partition#3	OK	Standby	Power Off	(Not specified)	<input type="checkbox"/> min
4	Partition#4	OK	Standby	Power Off	(Not specified)	<input type="checkbox"/> min
6	Partition#6	OK	On	OS Running	(Not specified)	<input type="checkbox"/> min
8	Partition#8	OK	On	OS Running	(Not specified)	<input type="checkbox"/> min
10	Partition#10	OK	Standby	Power Off	(Not specified)	<input type="checkbox"/> min
12	Partition#12	OK	Standby	Power Off	(Not specified)	<input type="checkbox"/> min
14	Partition#14	OK	On	OS Running	(Not specified)	<input type="checkbox"/> min

Apply Cancel

Partition > Power Control page ("Power Off" operation completed)

4) Restore the DVD setting.

On the Partition > USB/Video/DVD Switch page, restore the USB/Video/DVD Switch setting, and click <Apply>.

(In PRIMEQUEST 510A, this procedure is unnecessary.)

System | Partition | Switch | User Administration | Network Configuration | Maintenance Logout

>Partition >USB/Video/DVD Switch

- Power Control
- Schedule
- USB/Video/DVD Switch**
- Console Redirection Switch
- Partition Configuration
- Split Configuration
- Reserved SB Configuration
- Partition#0
- Partition#2
- Partition#3
- Partition#4
- Partition#6
- Partition#8
- Partition#10
- Partition#12
- Partition#14

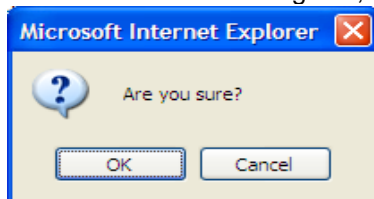
USB/Video/DVD Switch

Select partition to connect USB, Video, or DVD respectively, then click the Apply button to take effect.

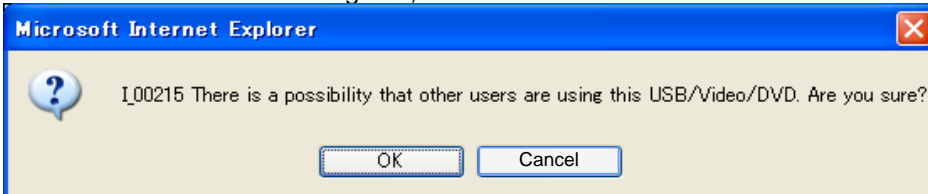
#	Partition Name	Status	Power Status	USB	Video	DVD
0	Partition#0	OK	On	<input type="radio"/>	<input type="radio"/>	<input type="radio"/>
2	Partition#2	OK	Standby	<input type="radio"/>	<input type="radio"/>	<input type="radio"/>
3	Partition#3	OK	Standby	<input type="radio"/>	<input type="radio"/>	<input type="radio"/>
4	Partition#4	OK	Standby	<input type="radio"/>	<input type="radio"/>	<input type="radio"/>
6	Partition#6	OK	On	<input type="radio"/>	<input type="radio"/>	<input type="radio"/>
8	Partition#8	OK	On	<input type="radio"/>	<input type="radio"/>	<input type="radio"/>
10	Partition#10	OK	Standby	<input type="radio"/>	<input type="radio"/>	<input type="radio"/>
12	Partition#12	OK	Standby	<input type="radio"/>	<input type="radio"/>	<input type="radio"/>
14	Partition#14	OK	On	<input type="radio"/>	<input type="radio"/>	<input type="radio"/>
Free				<input checked="" type="radio"/>	<input checked="" type="radio"/>	<input checked="" type="radio"/>

Partition > USB/Video/DVD Switch page (DVD switch selection)

In the confirmation dialog box, click <OK>.



In another confirmation dialog box, click <OK>.



In the completion dialog box, click <OK>.



3.6.14 Starting the tool in an environment with various EFI drivers

If there is a mixture of Fibre Channel adapters with different EFI driver version numbers, start the EFI tool by following the procedure below.

3.6.14-1 Confirm the EFI driver number for each Fibre Channel device

```
fs1:\> drivers -b
          T   D
D         Y C I
R         P F A
V  VERSION  E G G #D #C DRIVER NAME          IMAGE NAME
== ==
18 00000010 B - - 5 42 Pci Bus Driver          PciBus
** *****
** *****
22 00031114 D X X 2 - Emulex SCSI Pass Thru Driver 3.11A4
** *****
** *****
34 00031016 D X X - Emulex SCSI Pass Thru Driver 3.10A6
** ***** *
```

For two different Emulex version numbers, confirm the numerical value NN at the beginning of the line of the EFI driver that is the newer version (the one with the higher number, which is 0031114). (Here, NN is 22.)

3.6.14-2 Enter the command for startup

```
fs1:\> drvcfg -s 22
```

The number entered after "-s" is the numerical value (NN) confirmed in the step explained in Section 3.6.14-1.

3.6.14-3 Confirm startup

Based on the screen displayed for startup, such as shown below, confirm that the tool has started.

```
-----
Emulex Fibre Channel EFI-Bios Utility, Ver: 3.11a4
-----

Emulex Adapters in this System: 001 thru002

001: LP10000    PCI-X 133MHz Bus#: 0F Dev#: 01 Func#: 00
```

3.6.14-4 Notes

If an old version number is specified by mistake (here, that would be 34), the Fibre Channel adapter with the older version number may be incorrectly displayed with "PCI 33MHz," as shown below on line 002. In this state with the selected device having the old version number and being incorrectly displayed, the update cannot be performed.

In this state, exit the EFI tool once by pressing the [Esc] key, and go back to the step in Section 3.6.14-1.

```
-----
Emulex Fibre Channel EFI-Bios Utility, Ver: 3.10a6
-----

Emulex Adapters in this System: 001 thru002

001: LP10k      PCI-X 133MHz Bus#: 0F Dev#: 01 Func#: 00
002: PCI 33MHz  Bus#: 00 Dev#: 00 Func#: 00
```

Appendix Lists of the Folder Hierarchy on the Firmware CD

[PQ420]

Model name	Specification	Number displayed on screen	Firmware	Directory path	File name	Confirmation of version number
MC-08FC11	Delivery No.: CA06657-E301 Maintenance No.: CA05950-0966	LP10000	1.91A5	IPQ420\Emulex_FC\MC08FC11\Firm_1.91A5	td191a5.all	TS1.91A5
			1.91A1	IPQ420\Emulex_FC\MC08FC11\Firm_1.91A1	td191a1.all	TS1.91A1
MC-08FC71	Delivery No.: CA06657-E311 Maintenance No.: CA05950-1020	LP10000	1.91A5	IPQ420\Emulex_FC\MC08FC71\Firm_1.91A5	td191a5.all	TS1.91A5
			1.91A1	IPQ420\Emulex_FC\MC08FC71\Firm_1.91A1	td191a1.all	TS1.91A1
MC-08FC31	Delivery No.: CA06657-E303 Maintenance No.: CA05951-9610	LP11000	2.70A5	IPQ420\Emulex_FC\MC08FC31\Firm_2.70A5	bd270a5.all	BS2.70A5
			2.10A7	IPQ420\Emulex_FC\MC08FC31\Firm_2.10A7	bd210a7.all	BS2.10A7
MC-08FC41	Delivery No.: CA06657-E304 Maintenance No.: CA05951-9611	LP11002	2.70A5	IPQ420\Emulex_FC\MC08FC41\Firm_2.70A5	bf270a5.all	BS2.70A5
			2.10A7	IPQ420\Emulex_FC\MC08FC41\Firm_2.10A7	bf210a7.all	BS2.10A7
MC-08FC51	Delivery No.: CA06657-E305 Maintenance No.: CA05951-9612	LPe11000	2.70A5	IPQ420\Emulex_FC\MC08FC51\Firm_2.70A5	zd270a5.all	ZS2.70A5
			2.50A4	IPQ420\Emulex_FC\MC08FC51\Firm_2.50A4	zd250a4.all	ZS2.50A4
MC-08FC61	Delivery No.: CA06657-E306 Maintenance No.: CA05951-9613	LPe11002	2.70A5	IPQ420\Emulex_FC\MC08FC61\Firm_2.70A5	zf270a5.all	ZS2.70A5
			2.50A4	IPQ420\Emulex_FC\MC08FC61\Firm_2.50A4	zf250a4.all	ZS2.50A4

[PQ480/440]

Model name	Specification	Number displayed on screen	Firmware	Directory path	File name	Confirmation of version number
MC-08FC11	Delivery No.: CA06657-E301 Maintenance No.: CA05950-0966	LP10000	1.91A5	IPQ480_440\Emulex_FC\MC08FC11\Firm_1.91A5	td191a5.all	TS1.91A5
			1.91A1	IPQ480_440\Emulex_FC\MC08FC11\Firm_1.91A1	td191a1.all	TS1.91A1
MC-08FC71	Delivery No.: CA06657-E311 Maintenance No.: CA05950-1020	LP10000	1.91A5	IPQ480_440\Emulex_FC\MC08FC71\Firm_1.91A5	td191a5.all	TS1.91A5
			1.91A1	IPQ480_440\Emulex_FC\MC08FC71\Firm_1.91A1	td191a1.all	TS1.91A1
MC-08FC31	Delivery No.: CA06657-E303 Maintenance No.: CA05951-9610	LP11000	2.70A5	IPQ480_440\Emulex_FC\MC08FC31\Firm_2.70A5	bd270a5.all	BS2.70A5
			2.10A7	IPQ480_440\Emulex_FC\MC08FC31\Firm_2.10A7	bd210a7.all	BS2.10A7
MC-08FC41	Delivery No.: CA06657-E304 Maintenance No.: CA05951-9611	LP11002	2.70A5	IPQ480_440\Emulex_FC\MC08FC41\Firm_2.70A5	bf270a5.all	BS2.70A5
			2.10A7	IPQ480_440\Emulex_FC\MC08FC41\Firm_2.10A7	bf210a7.all	BS2.10A7

[PQ520]

Model name	Specification	Number displayed on screen	Firmware	Directory path	File name	Confirmation of version number
MC-08FC71	Delivery No.: CA06657-E311 Maintenance No.: CA05950-1020	LP10000	1.91A5	IPQ520\Emulex_FC\MC08FC71\Firm_1.91A5	td191a5.all	TS1.91A5
			1.91A1	IPQ520\Emulex_FC\MC08FC71\Firm_1.91A1	td191a1.all	TS1.91A1
MC-08FC31	Delivery No.: CA06657-E303 Maintenance No.: CA05951-9610	LP11000	2.70A5	IPQ520\Emulex_FC\MC08FC31\Firm_2.70A5	bd270a5.all	BS2.70A5
			2.10A7	IPQ520\Emulex_FC\MC08FC31\Firm_2.10A7	bd210a7.all	BS2.10A7
MC-08FC41	Delivery No.: CA06657-E304 Maintenance No.: CA05951-9611	LP11002	2.70A5	IPQ520\Emulex_FC\MC08FC41\Firm_2.70A5	bf270a5.all	BS2.70A5
			2.10A7	IPQ520\Emulex_FC\MC08FC41\Firm_2.10A7	bf210a7.all	BS2.10A7
MC-08FC51	Delivery No.: CA06657-E305 Maintenance No.: CA05951-9612	LPe11000	2.70A5	IPQ520\Emulex_FC\MC08FC51\Firm_2.70A5	zd270a5.all	ZS2.70A5
			2.50A4	IPQ520\Emulex_FC\MC08FC51\Firm_2.50A4	zd250a4.all	ZS2.50A4
MC-08FC61	Delivery No.: CA06657-E306 Maintenance No.: CA05951-9613	LPe11002	2.70A5	IPQ520\Emulex_FC\MC08FC61\Firm_2.70A5	zf270a5.all	ZS2.70A5
			2.50A4	IPQ520\Emulex_FC\MC08FC61\Firm_2.50A4	zf250a4.all	ZS2.50A4

[PQ580/540]

Model name	Specification	Number displayed on screen	Firmware	Directory path	File name	Confirmation of version number
MC-08FC71	Delivery No.: CA06657-E311 Maintenance No.: CA05950-1020	LP10000	1.91A5	IPQ580_540\Emulex_FC\MC08FC71\Firm_1.91A5	td191a5.all	TS1.91A5
			1.91A1	IPQ580_540\Emulex_FC\MC08FC71\Firm_1.91A1	td191a1.all	TS1.91A1
MC-08FC31	Delivery No.: CA06657-E303 Maintenance No.: CA05951-9610	LP11000	2.70A5	IPQ580_540\Emulex_FC\MC08FC31\Firm_2.70A5	bd270a5.all	BS2.70A5
			2.10A7	IPQ580_540\Emulex_FC\MC08FC31\Firm_2.10A7	bd210a7.all	BS2.10A7
MC-08FC41	Delivery No.: CA06657-E304 Maintenance No.: CA05951-9611	LP11002	2.70A5	IPQ580_540\Emulex_FC\MC08FC41\Firm_2.70A5	bf270a5.all	BS2.70A5
			2.10A7	IPQ580_540\Emulex_FC\MC08FC41\Firm_2.10A7	bf210a7.all	BS2.10A7
MC-08FC51	Delivery No.: CA06657-E305 Maintenance No.: CA05951-9612	LPe11000	2.70A5	IPQ580_540\Emulex_FC\MC08FC51\Firm_2.70A5	bd270a5.all	BS2.70A5
			2.10A7	IPQ580_540\Emulex_FC\MC08FC51\Firm_2.10A7	bd210a7.all	BS2.10A7
MC-08FC61	Delivery No.: CA06657-E306 Maintenance No.: CA05951-9613	LPe11002	2.70A5	IPQ580_540\Emulex_FC\MC08FC61\Firm_2.70A5	bf270a5.all	BS2.70A5
			2.10A7	IPQ580_540\Emulex_FC\MC08FC61\Firm_2.10A7	bf210a7.all	BS2.10A7

[PQ520A/520X]

Model name	Specification	Number displayed on screen	Firmware	Directory path	File name	Confirmation of version number
MC-08FC71	Delivery No.: CA06657-E311 Maintenance No.: CA05950-1020	LP10000	1.91A5	IPQ520A_520X\Emulex_FC\MC08FC71\Firm_1.91	td191a5.all	TS1.91A5
			1.91A1	IPQ520A_520X\Emulex_FC\MC08FC71\Firm_1.91	td191a1.all	TS1.91A1
MC-08FC31	Delivery No.: CA06657-E303 Maintenance No.: CA05951-9610	LP11000	2.70A5	IPQ520A_520X\Emulex_FC\MC08FC31\Firm_2.70	bd270a5.all	BS2.70A5
			2.10A7	IPQ520A_520X\Emulex_FC\MC08FC31\Firm_2.10	bd210a7.all	BS2.10A7
MC-08FC41	Delivery No.: CA06657-E304 Maintenance No.: CA05951-9611	LP11002	2.70A5	IPQ520A_520X\Emulex_FC\MC08FC41\Firm_2.70	bf270a5.all	BS2.70A5
			2.10A7	IPQ520A_520X\Emulex_FC\MC08FC41\Firm_2.10	bf210a7.all	BS2.10A7
MC-08FC51	Delivery No.: CA06657-E305 Maintenance No.: CA05951-9612	LPe11000	2.70A5	IPQ520A_520X\Emulex_FC\MC08FC51\Firm_2.70	zd270a5.all	ZS2.70A5
			2.50A4	IPQ520A_520X\Emulex_FC\MC08FC51\Firm_2.50	zd250a4.all	ZS2.50A4
MC-08FC61	Delivery No.: CA06657-E306 Maintenance No.: CA05951-9613	LPe11002	2.70A5	IPQ520A_520X\Emulex_FC\MC08FC61\Firm_2.70	zf270a5.all	ZS2.70A5
			2.50A4	IPQ520A_520X\Emulex_FC\MC08FC61\Firm_2.50	zf250a4.all	ZS2.50A4

[PQ580A/540A]

Model name	Specification	Number displayed on screen	Firmware	Directory path	File name	Confirmation of version number
MC-08FC71	Delivery No.: CA06657-E311	LP10000	1.91A5	\\PQ580A_540A\Emulex_FC\MC08FC71\Firm_1.91	td191a5.all	TS1.91A5
	Maintenance No.: CA05950-1020		1.91A1	\\PQ580A_540A\Emulex_FC\MC08FC71\Firm_1.91	td191a1.all	TS1.91A1
MC-08FC31	Delivery No.: CA06657-E303	LP11000	2.70A5	\\PQ580A_540A\Emulex_FC\MC08FC31\Firm_2.70	bd270a5.all	BS2.70A5
	Maintenance No.: CA05951-9610		2.10A7	\\PQ580A_540A\Emulex_FC\MC08FC31\Firm_2.10	bd210a7.all	BS2.10A7
MC-08FC41	Delivery No.: CA06657-E304	LP11002	2.70A5	\\PQ580A_540A\Emulex_FC\MC08FC41\Firm_2.70	bf270a5.all	BS2.70A5
	Maintenance No.: CA05951-9611		2.10A7	\\PQ580A_540A\Emulex_FC\MC08FC41\Firm_2.10	bf210a7.all	BS2.10A7
MC-08FC51	Delivery No.: CA06657-E305	LPe11000	2.70A5	\\PQ580A_540A\Emulex_FC\MC08FC51\Firm_2.70	zd270a5.all	ZS2.70A5
	Maintenance No.: CA05951-9612		2.50A4	\\PQ580A_540A\Emulex_FC\MC08FC51\Firm_2.50	zd250a4.all	ZS2.50A4
MC-08FC61	Delivery No.: CA06657-E306	LPe11002	2.70A5	\\PQ580A_540A\Emulex_FC\MC08FC61\Firm_2.70	zf270a5.all	ZS2.70A5
	Maintenance No.: CA05951-9613		2.50A4	\\PQ580A_540A\Emulex_FC\MC08FC61\Firm_2.50	zf250a4.all	ZS2.50A4

[PQ510A]

Model name	Specification	Number displayed on screen	Firmware	Directory path	File name	Confirmation of version number
MC-08FC51	Delivery No.: CA06657-E305	LPe11000	2.70A5	\\PQ510A\Emulex_FC\MC08FC51\Firm_2.70A5	zd270a5.all	ZS2.70A5
	Maintenance No.: CA05951-9612		2.50A4	\\PQ510A\Emulex_FC\MC08FC51\Firm_2.50A4	zd250a4.all	ZS2.50A4
MC-08FC61	Delivery No.: CA06657-E306	LPe11002	2.70A5	\\PQ510A\Emulex_FC\MC08FC61\Firm_2.70A5	zf270a5.all	ZS2.70A5
	Maintenance No.: CA05951-9613		2.50A4	\\PQ510A\Emulex_FC\MC08FC61\Firm_2.50A4	zf250a4.all	ZS2.50A4

Corrective actions for error messages

Error message	Cause	Corrective action
Unable to Open the file.	The folder path is incorrect. The file name is incorrect.	Enter the correct folder path. Enter the correct file name.
Incompatible Image.	Incompatible firmware has been selected.	Confirm that the firmware of this version number is compatible with the corresponding adapter card.

FUJITSU