

Document Scanners

ScanSnap S300

office



ScanSnap
Color Image Scanner
S300



EUROPEAN
ISV
PARTNER

AP ASSURANCE
PROGRAMME

- Compact document scanner for office or mobile use
- Scan single or double sided documents at up to 16 images per minute
- Process business cards up to A4 size documents
- Be assisted by "Quick Menu" target application selection
- Optionally USB bus powered

FUJITSU

THE POSSIBILITIES ARE INFINITE

Accelerated scanned data use with S300's new Microsoft® Office linkage function **NEW**

Benefits include:

- Easy to use "Quick Menu" function
- S300 users can easily attach scanned images to e-mail messages and use this scanner in place of a photocopier to duplicate paper documents.
- Editable PDF images can be created by scanning documents into ScanSnap Organizer. This application will initiate background text recognition processes on the document anytime the computer's CPU is idling.

"One touch" operability

Use the organiser function with your preferred document settings



Scan2Folder



Scan2E-mail



Scan2Print



Top-class OCR engine
ABBYY FineReader for ScanSnap™ 3.0

ScanSnap S300

Easily digitises various document types.
"Total support" from digitisation through to application.



10 Sheets



150 to 600 dpi



Duplex 16 ipm



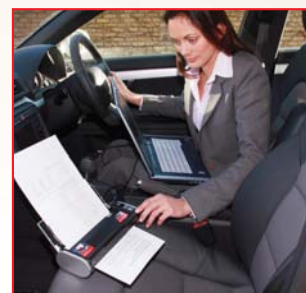
Simplex 8 ppm



Mains optional



Feed paper in

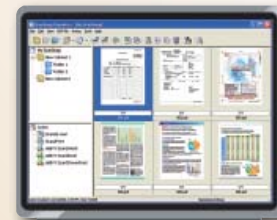


Press button to scan documents



View scanned documents and email wirelessly

Efficiently manages digitized data



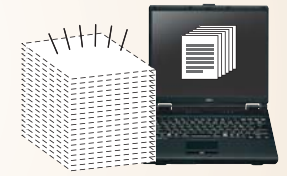
- S300 users can easily locate the ScanSnap generated PDF files that they are looking for by viewing displayed thumbnail images.
- The S300 creates searchable PDF files by performing OCR functions when the linked computer is not being used. Using desktop search utilities (not included) or Windows operating system provided search modules, paper documents now become electronically retrievable almost instantly.

PDF management & searchability software
ScanSnap Organizer

Simple one button approach and Compact!

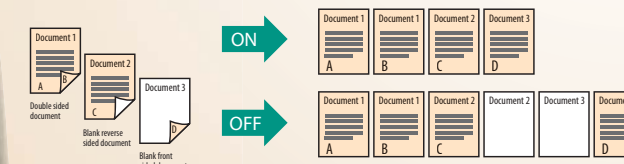
Digitises large volumes of office documents

The S300 enables users to easily reduce paper storage space, locate important documents and create data that can be used for multiple applications by storing scanned data in a computer. It allows you to carry along your paper documents electronically stored in your notebook, rather than physically by the pile.



Shows images as they are meant to be seen. The S300 automatically eliminates blank pages while deskewing and showing images in their proper orientation.

Blank page detection



A S300 sitting next to a notebook



Auto deskew and auto orientation



Scans everything from business cards to A3 sized documents

Auto-size detection

Users can simultaneously scan multi-page documents containing paper of different sizes.

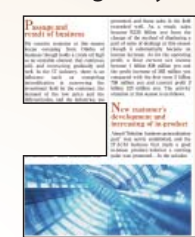
A3



A4



Irregularly shaped documents



Business cards



Receipts



Efficiently organizes business card information

- Scans large volumes of business cards into digital business card holders.
- Enables users to enter scanned business card data into Excel, Outlook, Outlook Express and other databases for future reference.

Business card scanning software
CardMinder™



ScanSnap S300 Specifications



ENERGY STAR® compliant

"Adobe", "Acrobat" and the Adobe PDF logo are either registered trademarks or trademarks of Adobe Systems Incorporated in the United States and/or other countries.

Product name	ScanSnap S300	
Scanner type	ADF (automatic document feeder), colour duplex scanner	
Imaging sensor type	CIS (Color Image Sensor) X2	
File formats	PDF (as standard), High Compression PDF, JPEG	
Document Formats	A4, B5, A5, B6, A6, business cards. US Letter, US Legal	
Light source	3 colour LED (Red / Green / Blue)	
Paper weight (thickness)	64 to 105 g/m ²	
Scanning speed (A4 portrait)		
Scanning Speed ¹ (A4 portrait / AC adapter)	Normal Mode	Color 150 dpi, B&W 300 dpi: 8 pages per minute / 16 images per minute
	Better Mode	Color 200 dpi, B&W 400 dpi: 6 pages per minute / 12 images per minute
	Best Mode	Color 300 dpi, B&W 600 dpi: 4 pages per minute / 8 images per minute
	Excellent Mode	Color 600 dpi, B&W 1,200 dpi: 0.5 pages per minute / 1 image per minute
Scanning Speed ² (A4 portrait / USB bus power)	Normal Mode	Color 150 dpi, B&W 300 dpi: 4 pages per minute / 8 images per minute
	Better Mode	Color 200 dpi, B&W 400 dpi: 3 pages per minute / 6 images per minute
	Best Mode	Color 300 dpi, B&W 600 dpi: 2 pages per minute / 4 images per minute
	Excellent Mode	Color 600 dpi, B&W 1,200 dpi: 0.5 pages per minute / 1 image per minute
Paper chute capacity	10 sheets ADF (A4, 80 g/m ²)	
Optical resolution	600 dpi x 600 dpi	
Output format	Color 24 bit (RGB 8 bit / Pixel each); b/w (1 bit / Pixel)	
Interface	USB 2.0 (compatible with USB 1.1)	
Power consumption	Operating: ≤9 W, Standby: ≤5 W	
Power requirements	AC Adapter: AC 100 to 240 VAC ±10%, 50/60 Hz / USB Bus Power: 5V / 1A (0.5A X 2 Port)	
Operational environment	Temperature 5°C - 35°C / Relative humidity 20% - 80% (non-condensing)	
Dimensions (W x D x H)	284 x 95 x 77 mm	
Weight	1.4 kg without power adapter	
Bundled software	ScanSnap Manager [®] , ScanSnap Organizer, CardMinder	
Environmental compatibility	ENERGY STAR [®] and RoHS	
Supported operating systems	Windows 2000 Professional, XP, Windows Vista	

¹ Scanning speeds may vary due to the system environment used. ² Requires simultaneous connection to two active powered USB ports on computer. ³ TWAIN or ISIS[®] applications cannot be used directly. ⁴ When hopper is closed.

System requirements	Windows [®] 2000 Professional	Windows [®] XP	Windows [®] Vista [™]
Compatible Operating System	ScanSnap Manager V4.2	Supported	Supported ¹
	ScanSnap Organizer V3.2	Supported	Supported ¹
	CardMinder [™] V3.2	Supported	Supported ¹
Hardware Requirements	CPU	Intel [®] Pentium [®] III processor 1.2GHz or higher (Intel [®] Celeron [®] M 430 1.73GHz or higher is recommended)	
	Memory Capacity	512MB or higher (1 GB or higher is recommended)	
	Disk Capacity	Spare capacity of a least 920MB is necessary to install the software that is included in this table.	
	CD-ROM Drive	Required for installation	
	USB Port	USB 2.0 / USB 1.1	

¹ Compatible with Windows[®] 2000 Professional and Windows[®] XP Professional / Home Edition (Service Pack 1 or higher). ² Operates most effectively with Windows Vista[™] compatible versions of Adobe Acrobat. Use with non-Windows Vista[™] compatible versions of Adobe Acrobat might result in the generation of PDF files that cannot be searched. ³ Memory capacity of 1GB or higher is recommended when scanning in "Excellent mode". ⁴ Scanning speeds may drop if recommended CPU, memory capacity and USB 2.0 requirements are not met.

Consumables and Options	Part number	Remarks
ScanSnap S300 Consumable Kit	CON-3541-010A	Lifetime: Up to 100,000 Documents or 1 year; contents: 1 x Pick Roller, 2 x Separation Pad
Desktop Scanner Cleaning Kit	SC-CLE-KIT1	Includes F1 pump spray cleaner fluid, cleaning sheets with adhesive surface and cleaning paper

*ScanSnap Manager is a unique driver that can serve any application capable of opening PDF or JPEG file formats. This solution purposely does not support TWAIN or ISIS protocols in order to empower easy and convenient every day use. (TWAIN and ISIS[™] are not supported by ScanSnap).

All names, manufacturer names, brand and product designations are subject to special trademark rights and are manufacturer's trademarks and/or registered brands of their respective owners. All indications are non-binding. Technical data is subject to change without prior notification.

Fujitsu Europe Limited

Hayes Park Central
Hayes End Road, Hayes
Middlesex UB4 8FE
England
Tel: (+44-(0)20) 8573 4444
Fax: (+44-(0)20) 8573 2643

Fujitsu Deutschland GmbH

Frankfurter Ring 211
80807 Munich
Germany
Tel: (+49-(0)89) 32378-0
Fax: (+49-(0)89) 32378-100

Fujitsu Italia S.p.A.

Via Nazario Sauro, 38
20099 Sesto San Giovanni (MI)
Italy
Tel: (+39) 0226294.1
Fax: (+39) 0226294.201

<http://emea.fujitsu.com/scanners>

THE POSSIBILITIES ARE INFINITE