

Secure and reliable network scanning

Hassle-free document sharing

FUJITSU Image Scanner fi-6010N

- **Efficient.** Scan to email, printer, fax, PC or workgroup server anywhere on the network instantaneously
- **Seamless.** Remove the barriers to working more efficiently with colleagues in multi-site organisations
- **Verify.** Confirm captured image on large touch screen before sending
- **Reliable.** Equipped with intuitive and automated scanning mechanisms and image enhancement tools



shaping tomorrow with you

FUJITSU

Collaborate throughout the organisation with seamless and instantaneous efficiency



The FUJITSU Image Scanner fi-6010N network scanner removes the barriers to seamless business interactions across a multi-location organisation by improving workflows and uniting remote workgroups.

Easy-to-use functionality makes it the ideal business tool for high pressure environments enabling users to fulfil document management tasks quickly and reliably, to collaborate more effectively, archive more easily and manage complex documents and workloads more efficiently.

Empowering the user

The highly automated fi-6010N is a powerful efficiency improvement tool for individuals needing to capture and distribute ad hoc or large volumes of documents. As a stand-alone network device it removes the delays and tedium often associated with scanning documents to a personal computer and subsequently manipulating them for distribution to colleagues. Now, users simply scan their documents, enhance their digitised image and send them to other network devices throughout the enterprise. Scanned images can be verified on the colour LCD screen before sending and the integrated keyboard (optional language keyboard overlays available) enables email cover notes and other communications to be entered at the same time to achieve discreet turnkey document capture and distribution operations.

Sophisticated performance made simple

After loading documents into the scanner and logging in the user simply selects transmission mode and destination and presses the scan button. This is all that is required to scan documents to your company's unique workflow processes, network printers or to a network fax server system. Many process functions require no user intervention. Simple touch screen procedures accessed from the large colour display enable non-expert operators to capture high quality images first time - every time.



Integrated LCD operating panel



fi-6010N – A4 Portrait at 200 dpi 25 ppm / 50 ipm
Scan mixed batches through the 50 sheet ADF

Faster document turnaround

The fi-6010N will scan single or double sided A4 sheets at 25 pages per minute (ppm) or 50 images per minute (ipm) at 200 dpi in colour or black and white. When handling larger document workloads, users can process several hundred documents every day knowing they can rely on sheet-feeding reliability that is second to none.

The 50-sheet automatic document feeder (ADF) allows uninterrupted scanning of multi-page documents ranging in size from A8 to A4 whilst diverse changes in document thickness from between 52 to 127 g/m² will not hinder the scanning process. Users can process mixed documents from photographs, press releases, receipts, licences and forms to hand-written letters free from document feeding problems or stacking errors.

Reliability adds to business efficiency

Image enhancing features such as Automatic Colour Detection, Automatic Orientation, Blank Page Removal, Advanced Paper Detection and Multifeed Detection contribute to more efficient document processing day after day helping to save time and minimise storage requirements. Detection of colour and document size with automated cropping and page orientation detection are part of a powerful array of functions that deliver paper-to-digital conversion with ease.

Production capability from smaller desktop footprint

Compact size and quiet operation make the fi-6010N ideal for any location where space is at a premium. The intelligent functionality makes the fi-6010N a stand-alone device and deployed to rationalise device distribution - reducing capital and maintenance costs across the network.

Management from single location

Scanner Central Admin software enable Fujitsu scanners to be managed and maintained from a single location to minimise scanner downtime anywhere on the global system.

Addresses security concerns

Server interactions and transmissions are made more secure through layers of encryption and authentication technologies. The embedded system helps protect the business from data theft and malware threats.

Optional extras

Software Development Kit

This software development kit (SDK) assists with the development of fi-6010N control related applications for seamless integration into a wide range of business systems.

Details available on our website at <http://emea.fujitsu.com/scanners>

Carrier sheets

Carrier sheets allow you to scan documents, larger than A4 up to A3 or photos and clippings that are at risk of being damaged when processed through an ADF.

{Part Number – PA03360-0013}

Multiple Language Keyboard Covers

Available in English, French, German, Italian, Portuguese, Russian, Spanish and Turkish.

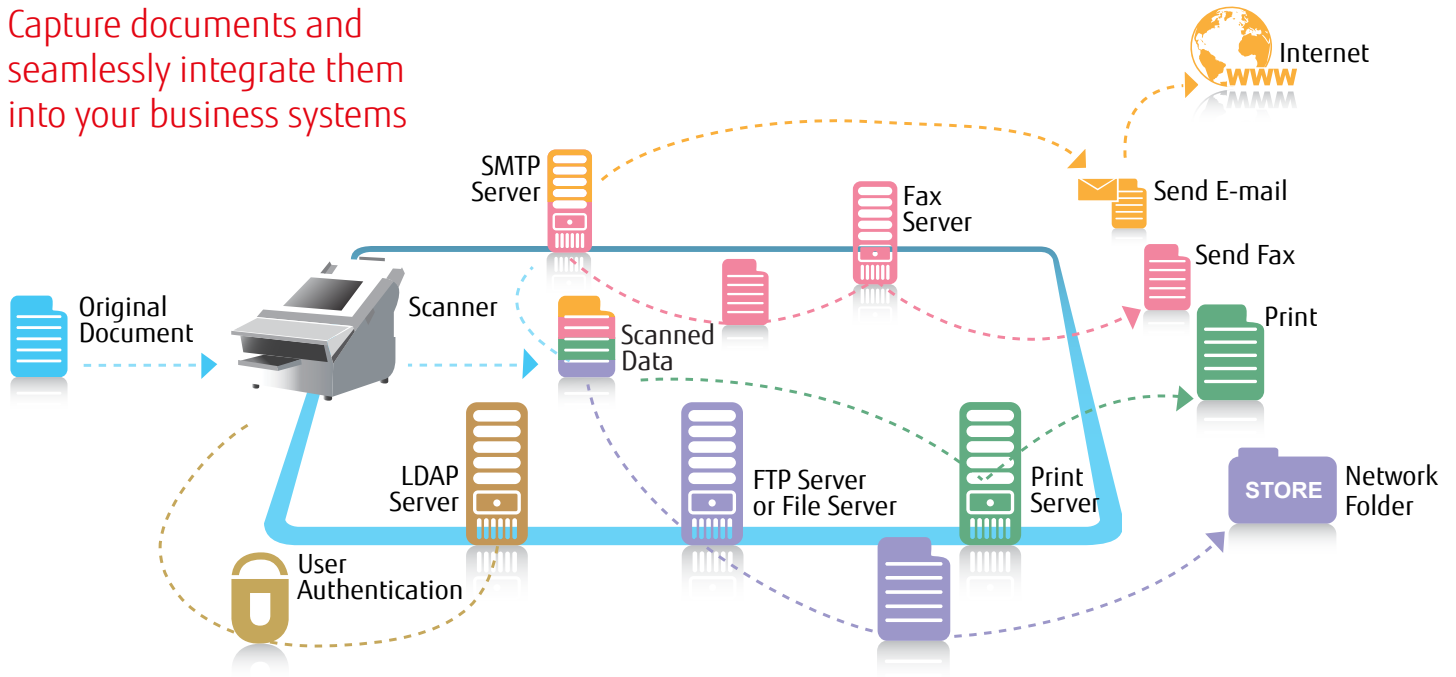
McAfee Anti Virus Packages

Available in single, 10 or 100 licensing packs.



Workflow diagram

Capture documents and seamlessly integrate them into your business systems



Specifications

Model	fi-6010N
Supported operating systems	LDAP, LDAPS, Windows® 2012 Server Active Directory, Windows Server™ 2008 Active Directory, Windows Server™ 2003 Active Directory, Windows Server™ 2000 Active Directory
Scanner type	ADF (automatic document feeder)
Scanning modes	Simplex / Duplex, Colour / Greyscale / Mono
Image sensor type	Colour CCD (charge coupled device) x 2
Light source	White cold cathode discharge lamp x 2
Document size	Minimum: A8 Portrait (52 mm x 74 mm) / Maximum: Legal (216 mm x 356 mm) Long paper scanning: 863 mm ¹
Recommended paper weight	52 to 127g/m ²
Scanning speed (A4 Portrait) ² Colour ³ / Greyscale ³ / Mono	Simplex: 25 ppm (200 dpi), Duplex: 50 ipm (200 dpi)
Paper chute capacity ⁴	50 sheets (A4, 80g/m ²) (Active loadable ADF)
Optical resolution	600 dpi
Output resolution ⁵ Colour / Greyscale / Mono	150 / 200 / 300 / 600 dpi
Output methods	E-mail attachments, send as faxes, Network folder, Print
Output file formats	TIFF, MTIFF, JPEG, PDF, Searchable PDFs, Password protected PDFs
Network interface	10BASE-T, 100BASE-TX
Network protocols	TCP/IP, DHCP, SMTP, SMB, LDAP, NTP, FTP, HTTP
Power requirements	AC 100 to 240 V, ± 10%
Power consumption	Operating: 88W or less (Sleep mode: 10W or less)
Operating environment	Temperature: 5° to 35°C, Relative humidity (non-condensing) 20% to 80%
Dimensions (W x D x H) ⁶ / Weight	315 x 415 x 281 mm / 13 kg
Environmental compliance	RoHS ⁷
Display	LCD: 8.4inch XGA (1,024 x 768 pixel) TFT colour monitor, Touch panel: Analogue resistive touch display
Keyboard	US 101 keyboard
Others	Double-feed detection Ultrasonic double-feed detection sensor

¹ The fi-6010N is capable of scanning documents that exceed A3 in length.

² Actual scanning speeds are affected by data transmission and software processing times.

³ JPEG compressed figures.

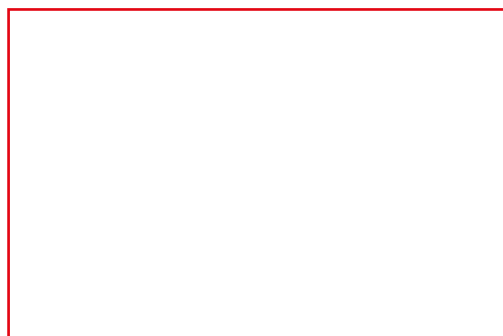
⁴ Maximum capacity varies, depending upon paper weight.

⁵ Maximum output resolution may vary upon scanning range. In addition, Carrier Sheet scanning supports scanning at resolutions of up to 300 dpi.

⁶ Excluding the ADF paper chute and stacker.

⁷ PFU LIMITED, a Fujitsu company, has determined that this product meets RoHS requirements (2011/65/EU)

All names, manufacturer names, brand and product designations are subject to special trademark rights and are manufacturer's trademarks and/or registered brands of their respective owners. All indications are non-binding. Technical data is subject to change without prior notification.



PFU (EMEA) Limited
Hayes Park Central
Hayes End Road, Hayes
Middlesex UB4 8FE
United Kingdom

Tel: +44 (0)20 8573 4444

PFU (EMEA) Limited
Frankfurter Ring 211
80807 Munich
Germany

Tel: +49 (0)89 32378 0

PFU (EMEA) Limited
Via Nazario Sauro, 38
20099 Sesto San Giovanni (MI)
Italy

Tel: +39 02 26294 1

PFU (EMEA) Limited
Camino Cerro de los Gamos, 1
28224 Pozuelo de Alarcón
Madrid
Spain

Tel: +34 91 784 90 00

<http://emea.fujitsu.com/scanners>