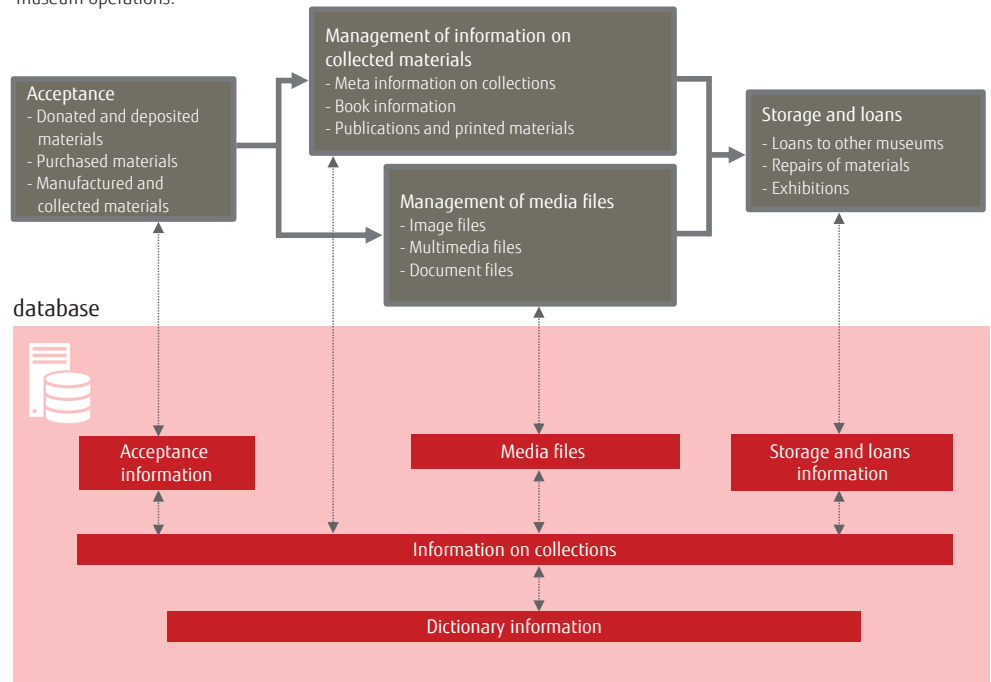


Specification

Fujitsu's museum solution provides tools for facilitating integrated management of various types of information on museum collections using databases and creates linkage among pieces of accumulated information to fully support a variety of museum operations.



Minimum System Requirements

	Server	Client
OS	Red Hat Enterprise Linux 6 or Windows Server 2008R2/2012	Windows 8/7/Vista or Mac OS X
CPU	Xeon 2GHz(2 core)	Pentium Celeron 500MHz
Memory	2GB	512MB
Requirement Software	Oracle or PostgreSQL FUJITSU Software Interstage Shunsaku Data Manager (Search Engine)	Internet Explorer 7 or Firefox 10 or later

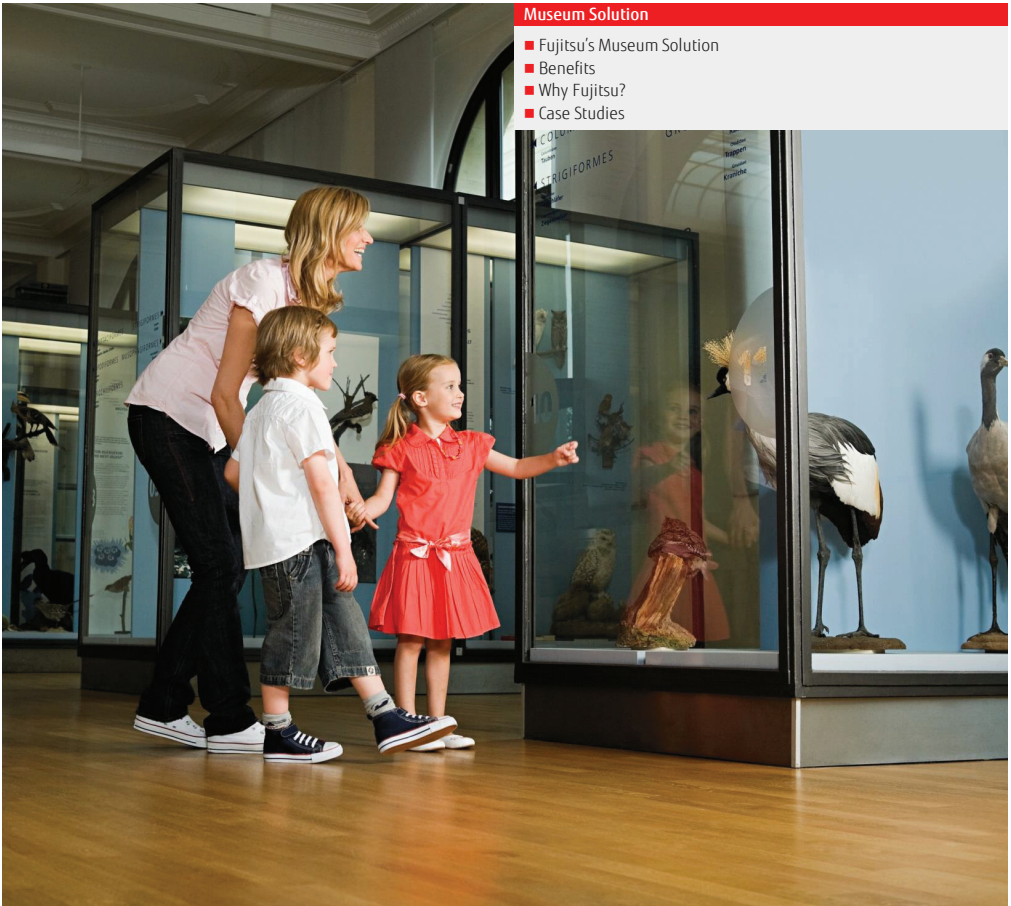
- Windows is a registered trademark of Microsoft Corporation in the United States and other countries.
- Other product names are trademarks or registered trademarks of their respective trademark holders.

Contact
FUJITSU LIMITED
Address: Shiodome City Center,
5-2, Higashi-shimbashi1-chome, Minato-ku,
Tokyo 105-7123, Japan
E-mail: contact-edu_solution@cs.jp.fujitsu.com



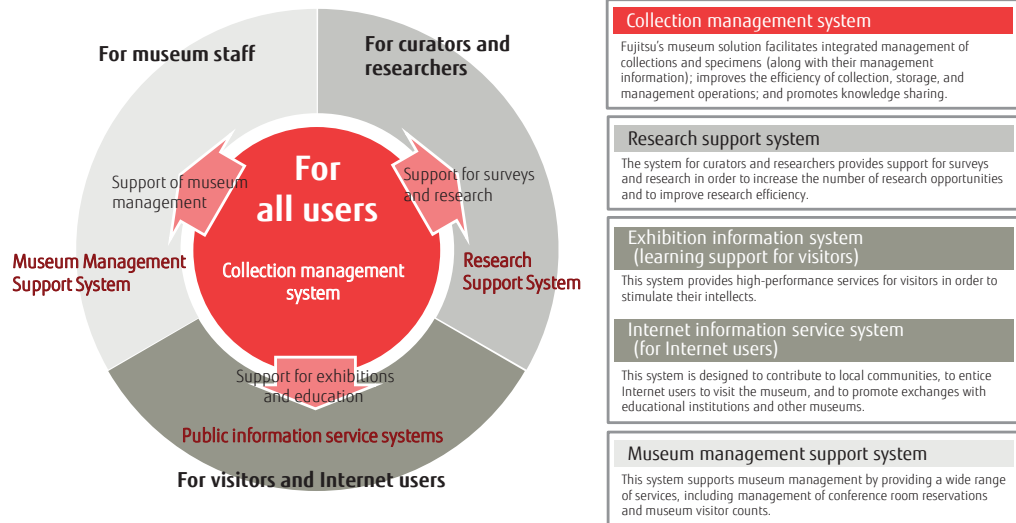
Overview of Service / Solution

FUJITSU Education Solution Museum Solution



Fujitsu's Museum Solution

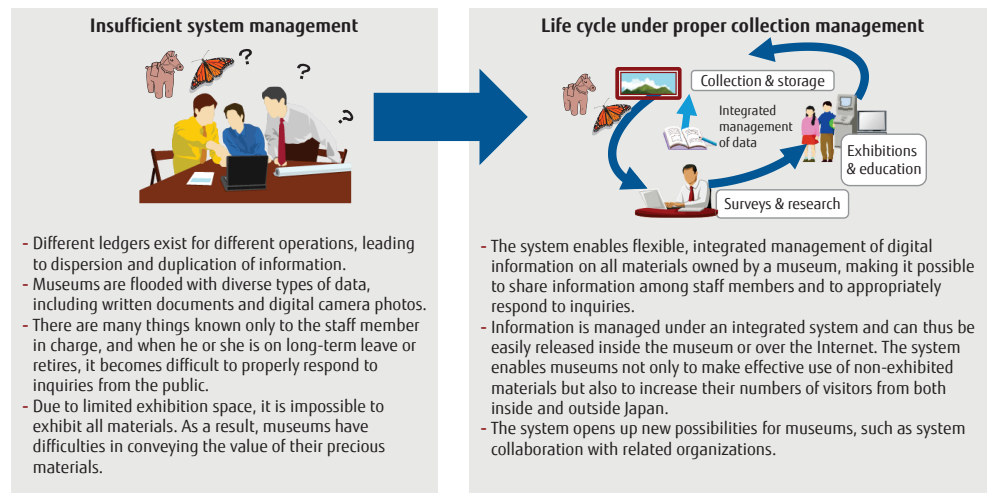
Collection Management System as a center, this solution can provide the cooperation with publication and education, support of researches, support of museum management.



Benefits

Fujitsu's solution is widely used in Japan for museum collection management. This solution enables flexible management of digital information on various materials, including cultural properties, specimens, and works of art. It helps museums collect and preserve materials, provides support for curators in conducting surveys and research, and greatly contributes to exhibitions and education for museum visitors.

Many museums are unable to effectively use their valuable collections of materials due to a lack of proper management systems. As a result, they often face difficulties in carrying out their educational missions.



Fujitsu's collection management system increases the value of collected materials and helps distribute information to the general public, thus supporting museums in carrying out their missions and helping increase the numbers of visitors from both inside and outside Japan.

Why Fujitsu?

1. System developed using all of our know-how acquired through museum system implementation

- Fujitsu's system provides tools for facilitating integrated management of all operations, including acceptance of materials, management of documents and photographs, and handling of loans, repairs, and exhibitions. Settings for input items can be freely adjusted to accommodate changes after system implementation.
- The system is operated via a web browser using Unicode as the character encoding. Therefore, a wide range of languages are supported, including old-style Chinese characters. Scientific names, nomenclator names, author names, document titles, and book titles can be registered, searched, and accessed via their source language.
- Beyond still images, various types of data are supported, including video data, Microsoft Office documents, and PDF files. Therefore, reference materials and related papers can be linked to photographs of the original materials and managed together with such materials.
- The system has a variety of features that support inputting data efficiently without error.
- Data access rights can be specified in detail per user to ensure safety and security of system operation.

2. Search system designed for massive collections of materials

- The system includes a high-speed search engine, Interstage Shunsaku Data Manager*, as a standard feature and maintains responsiveness even when searching large amounts of materials or performing complex searches. (*Japanese Patent No.: 2002-222194).
- Flexible searches can be performed, including searches across different categories of materials, as well as free-word full-text searches, hierarchical searches, and searches with complex conditions.



3. Security measures and effective displays for public exhibitions

- Digital watermarks (museum names, control IDs, etc.) are embedded in images displayed to the public to prevent unauthorized use of data.
- Museums can develop their own original designs or screen flows.
- Materials can be displayed in different ways based on their characteristics (digital data, high-resolution, 3D, etc.)
- Settings for publicly exhibited materials can be configured per material or per display medium.



Case Studies

A. National museum (No. of materials: 1.3 million)

1. High-speed search of **Japan's largest number of museum materials and categories**
2. Per-item settings for every item in 60 categories configured **in accordance with curators' requests**
3. **Strict control of users' data access rights** to ensure data security

B. Prefectural museums (No. of materials: 0.4 million)

1. **Integrated management** of all materials from multiple museums in the prefecture
2. Improved user convenience through a feature that allows for **easy global search** of information on all cultural properties in the prefecture

C. District museum (No. of materials: 50,000)

1. Implementation of systems for management and public display of folk-cultural materials (everyday goods, etc.) and historical materials
2. Use of a high-resolution display system for enlarged display of old maps and other materials in order to support research
3. An exhibition system that includes quizzes and reasoning games