

Modules



(Note) A server license is required to run Clientcore, Client Options, or Server Options.
A Clientcore license is required to run Client Options.

System Requirements

Operating system requirements and other information

- Application Server : 32bit/64bit Windows Server 2008 R2, Oracle Client 10g R1/R2, or Oracle Client 11g R1/R2
- Database Server : 32bit/64bit Windows Server 2008 R2, Oracle Server 10g R1/R2, or Oracle Server 11g R1/R2
- Bulk Server : 32bit/64bit Windows Server 2008 R2
- License Server : 32bit/64bit Windows Server 2008 R2
- Clients : 32bit/64bit Microsoft Windows 7 SP1, (Windows XP Professional SP3 :-4/9/2014)
- Add-on Program Development Environment : 32bit/64bit Microsoft Windows 7 SP1
(Windows XP Professional SP3 :-4/9/2014)
Microsoft Visual Studio 2005 or later
- Bulk Server : 32bit/64bit Windows Server 2008 R2
- Compliant CAx version : FJICAD/MX V7, FJVPS V15

Hardware System Requirements

Recommended system configuration

- Application Server : CPU: Xeon 2 GHz or higher; RAM: 2 GB or higher
 - Data base Server : CPU: Xeon 2 GHz or higher; RAM: 4 GB or higher
- OS and hardware requirements will be updated in the future.

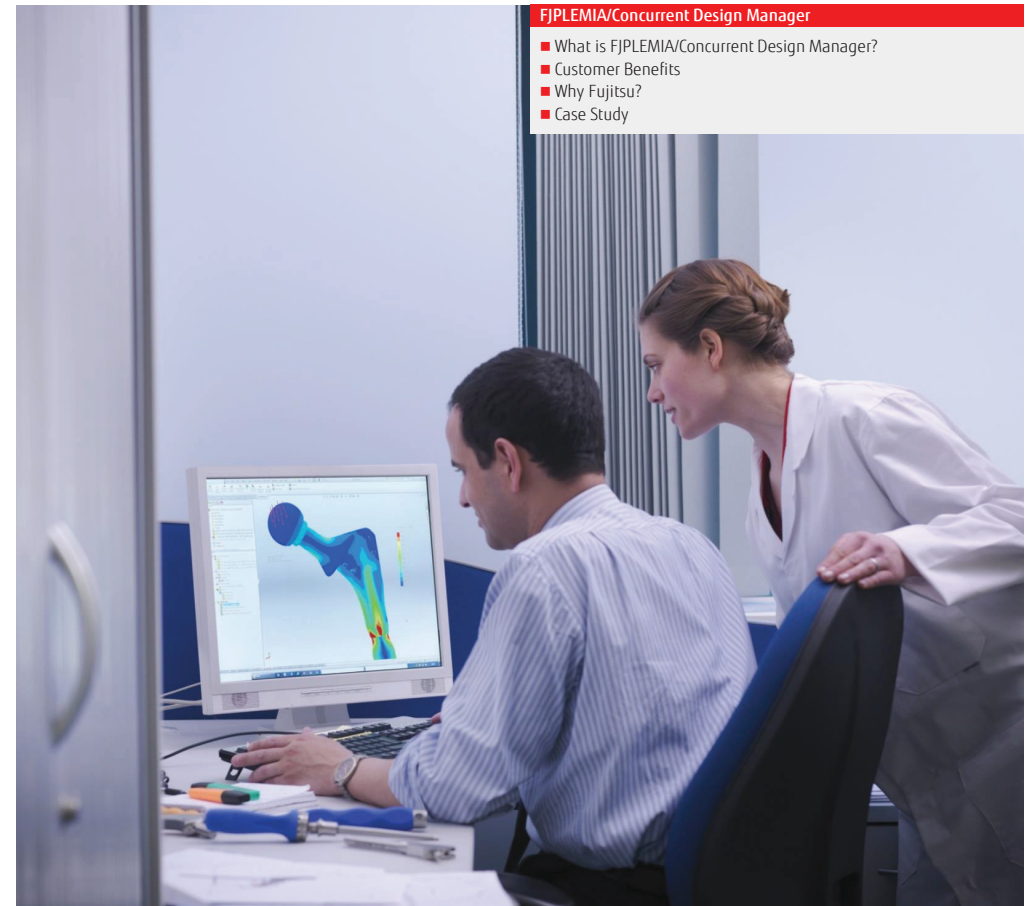
Contact
FUJITSU LIMITED
Address: 1-17-25 Shin-kamata, Ohta-ku, Tokyo
144-8588, Japan
E-mail: plm-global@ml.css.fujitsu.com



Overview of Service / Solution

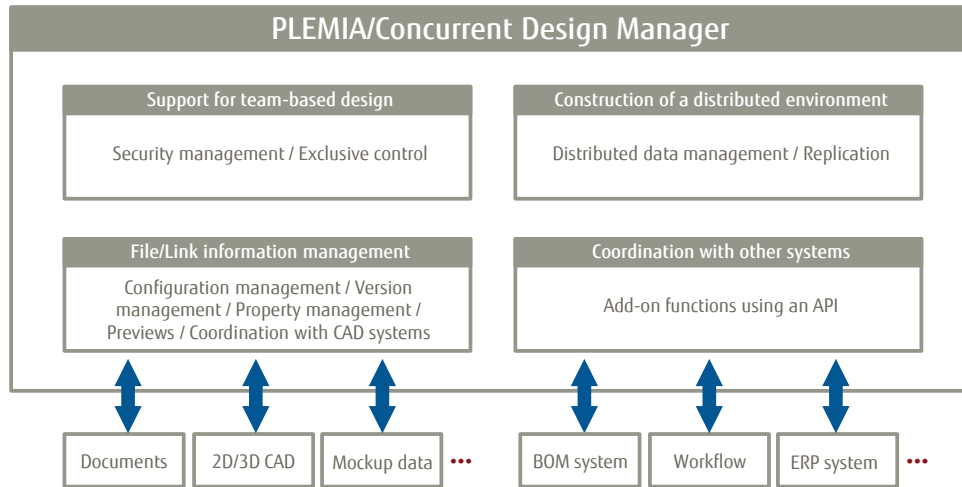
FUJITSU Manufacturing Industry Solution FJPLEMIA/Concurrent Design Manager

3D CAD & Mock-up Data management software package
PLEMIA realizes a global distributed design environment for effective collaborative design
PLEMIA creates time for creative work by achieving dynamic linkage management of 3D models
Achieve integrated management of prominent types of 3D CAD data via a unified interface



What is FJPLEMIA/Concurrent Design Manager?

- Fujitsu's Concurrent Design Manager is a tool for managing design data for product lifecycle management (PLM).
- Concurrent Design Manager provides a seamless team-based design environment regardless of design environment size or design tool type.
- Concurrent Design Manager improves overall business efficiency when used in combination with BOMs and mockup tools.



Customer Benefits

Fujitsu's Design Manager enables construction of an information platform using tools with a proven track record.

- Fujitsu's Design Manager provides access to solutions supported by our experiences with major advanced manufacturers. Fujitsu also uses Concurrent Design Manager internally.

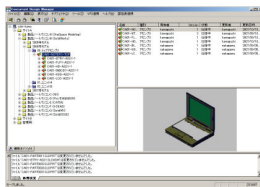
Fujitsu's Design Manager creates time to focus on design work.

- Fujitsu's Design Manager is designed to be easy to use so as to help users learn how to operate it within a short period of time.
- The tools manage data link information, allowing designers to focus on creative design work.
- Design Manager automatically generates VPS data to reduce designers' workloads.

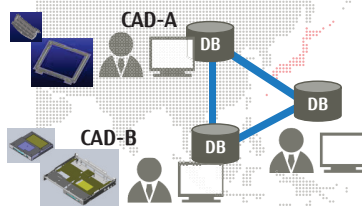
Design Manager's flexible expandability supports company-wide and global development.

- Fujitsu's Design Manager supports multiple CAD systems, thus allowing users to manage different CAD programs in different departments using the same system.
- Designed to support multi-site systems, Fujitsu's Design Manager enables design to be coordinated across different sites.
- Develop add-ons using the API to achieve easy coordination with upstream and downstream systems.
- One can start out small and then gradually expand the system to achieve large-scale management.

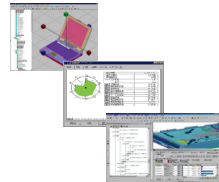
Simple and instinctive GUI



Multi-Site Cooperation Design

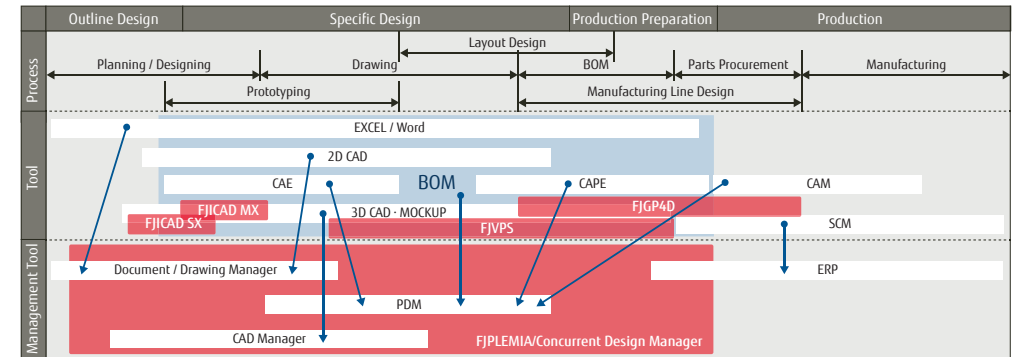


Digital Mockup & Simulation



Why Fujitsu?

- Fujitsu is a manufacturer that designs and manufactures products on its own, including supercomputers, servers, telecommunications equipment, and mobile devices. Based on its experience in manufacturing, Fujitsu provides PLM package software solutions.
 - CAD: FJICAD SX and FJICAD MX
 - MOCKUP: FJVPS
 - PDM: FJPLEMIA/Concurrent Design Manager
 - Virtual Product Line Simulator: FJGP4D
- Based on 30 years of experience in the industry, Fujitsu provides package software that caters to customers' needs.
- By developing its own package software, Fujitsu maintains high product quality to meet customers' needs.
- Fujitsu is capable of providing customers with a full range of services, including hardware (e.g., PCs and servers) as well as networks, telecommunications equipment, and software.
- As an SI vendor, Fujitsu has helped many customers construct business operation systems for many years.



Case Study

User company	Usage and characteristics
Fujitsu Ltd.	Used at 10 branches in Japan in coordination with company BOM systems (configuration information)
Konica Minolta Inc.	Used at 2 branches in Japan and 1 branch in China in coordination with company BOM systems (configuration information)
Cateye Co., Ltd.	Used at 1 branch in Japan Data delivery to production through the P/S Editor option (simple assembly configuration list)
Fujitsu Ten Ltd. (Automotive supplier)	Used at 2 branches in Japan and 1 branch in China The company plans to expand the system to its overseas branches (in Southeast Asia)
Precision instrument company C	Used at 2 branches in Japan and 1 branch in China in coordination with existing BOM systems (generation of drawing frames, TIFF conversion, etc.)
Machine manufacturing company M	Used at 2 branches in Japan and 1 branch in South Korea in coordination with company BOM systems (configuration information)

Example: Fujitsu Ltd.

Goals

- Centralized management of design assets across multiple business sites
- Centralized management of data from multiple types of CAD software
- Coordination with the core PDM system

Results

- Promotion of coordinated design and improvement in work efficiency
- Immediate retrieval of information and reduction in the number of maintenance man-hours
- Company-wide information sharing and improvement in work efficiency

Retrieving configuration tree information from Concurrent Design Manager data; editing the information using a BOM editing tool and then registering it in the core PDM system

