

Fujitsu recommends Windows 11 Pro.

Data Sheet

Fujitsu Notebook LIFEBOOK E5413

Your Powerful and Modern Business Device

The Fujitsu LIFEBOOK E5413 is designed for office workers needing a powerful and fully equipped notebook. Thanks to the 13th generation Intel® Core™ processor you can work efficiently wherever you are. Advanced security features like PalmSecure™ are protecting your business data against unauthorized access. Modern Standby provides you an instantly ready and always connected notebook.

Ultra-slim and lightweight design

Reliable mobility, ease of use and modern good looks for everyday business demands

- Ultra-slim 19.9 mm entry notebook starting at 1.35 kg with magnesium LCD lid
- Enjoy an ergonomic viewing experience with a 14.0-inch outdoor friendly anti-glare FHD display with touch option

Reliable and secure performance

Protect your business data from unauthorized access at all times

- Integrated PalmSecure™ or fingerprint sensor
- Infrared Camera: Allows face recognition with Windows Hello
- Intel® Iris® Xe Graphics
- Built-in Privacy Camera Shutter: Protecting your privacy
- SmartCard reader

Best in class connectivity

Be flexible and stay productive anywhere, anytime

- Compact and versatile Intel® Thunderbolt™ 4 USB Type-C connector to charge your laptop, transfer files at fast speeds, connect external monitors and other peripherals
- Full set of ports with a full-sized HDMI and LAN connector and USB Type-C
- Based on the latest 13th Gen Intel® Core™ processors, enabling data to be processed faster

Convenient serviceability and upgradeability

Easy access to key components reduces upgrade time and costs

- Battery, memory, internal storage and connectivity components can be changed with ease

Long-term stable platform

Protect your investments and be ready for shared desk concepts

- This LIFEBOOK E5 Series provides an extraordinary guaranteed product lifecycle of 24 months



Components

Base unit	LIFEBOOK E5413
Operating systems	
Operating system pre-installed	Windows 11 Pro. Fujitsu recommends Windows 11 Pro for business. Windows 11 Home Windows 10 Pro. Fujitsu recommends Windows 11 Pro for business.
Microsoft OS support information	Windows 11 requires for first device setup: - Internet connectivity - Microsoft account for Home editions or organizational account (e.g. ADD) for Pro editions After product end of life, Fujitsu continues to test and support new Windows releases for max. 5 years, depending on extension of hardware services through warranty top ups. For more details please visit our Fujitsu Service Statement under https://support.ts.fujitsu.com/IndexProdSupport.asp?lng=com&OpenTab=
Operating system notes	The use of Windows Operating System is subject to acceptance of the End User License Agreement of Microsoft as applicable under the relevant Microsoft program.
Processor	
	Intel® Core™ i7-1355U processor (10 Cores, up to 5.0 GHz) *
	Intel® Core™ i5-1345U processor (10 Cores, up to 4.7 GHz) *
	Intel® Core™ i5-1335U processor (10 Cores, up to 4.6 GHz) *
	Intel® Core™ i3-1315U processor (6 Cores, up to 4.5 GHz) *
	*Processor only for retail, SMB, education and government
Memory modules	
	8 GB (1 module(s) 8 GB) DDR4, 3,200 MT/s, SO DIMM
	16 GB (1 module(s) 16 GB) DDR4, 3,200 MT/s, SO DIMM
	32 GB (1 module(s) 32 GB) DDR4, 3,200 MT/s, SO DIMM
Hard disk drives (internal)	
	PCIe-SSD, 512 GB M.2 NVMe module, SED
	PCIe-SSD, 256 GB M.2 NVMe module, SED
	PCIe-SSD, 2 TB M.2 NVMe module, SED
	PCIe-SSD, 1 TB M.2 NVMe module, SED
Hard disk notes	Accessible capacity may vary, also depending on used software.
Interface add on cards/components (optional)	
4G/ LTE (optional)	Quectel EM05-G (4G Cat.4) (Downlink speed 150 MB/s, Uplink speed 50 MB/s)
Display	
	35.6 cm (14.0-inch), IPS, FHD, 1,920 x 1,080 pixel, Anti-glare multi-touch, 300 cd/m ² (Touch), 700:1 (Touch)
	35.6 cm (14.0-inch), FHD, 1,920 x 1,080 pixel, Anti-glare IPS display, 400 cd/m ² (FHD), 800:1 (FHD)
	35.6 cm (14.0-inch), FHD, 1,920 x 1,080 pixel, Anti-glare IPS display, 250 cd/m ² (FHD), 700:1 (FHD)
Multimedia	
Camera	Built-in webcam (HD) with Status LED Built-in Infrared webcam (HD) with Status LED
Camera notes	720p, 1 megapixels, 1280 x 720, with Privacy Camera Shutter
Microphone	dual digital array microphone

Base unit

Base unit	LIFEBOOK E5413
General system information	
Chipset	Integrated in CPU

General system information

Supported capacity RAM (min.)	8 GB
Supported capacity RAM (max.)	64 GB
Memory slots	2 SO DIMM (DDR4, 3200 MHz)
Memory notes	Dual channel support
LAN	10/100/1,000 MBit/s Intel® I219LM
Integrated WLAN	Intel WiFi 6E AX211 - WLAN, BT, SRD cat. 2
BIOS version	UEFI Specification 2.8
BIOS features	InsydeH2O BIOS
Audio type	On board
Audio codec	Realtek ALC257
Audio features	2x built-in speakers (stereo)

Graphics

Base unit	LIFEBOOK E5413
Graphics brand name	Intel® UHD Graphics (with Single channel memory), Intel® Iris® Xe Graphics (with Dual channel memory)
Graphics notes	Shared memory depending on main memory size and operating system

Interfaces

Audio: line-in / line-out	1
Internal microphones	2x digital array microphones (optional)
USB 3.2 Gen1 (5 Gbps) total	2x Type-A (1 with Anytime USB charge functionality)
Thunderbolt™ 4 total	2x Type-C with USB4 (40 Gbps, Power Delivery (15W), DP 1.4 out)
HDMI	1 Supports 4k@60Hz as specified in HDMI 2.0b
Ethernet (RJ-45)	1 (with status LED)
Memory card slots	1 microSD 3.0 Standard microSD card: 2GB microSDHC card: 32GB microSDXC card: 2TB Speed Class: up to UHS-I (104MB/s)
SmartCard slot	1 (optional)
SIM card slot	1 (Nano-SIM, only for models with configuration WWAN ready or with 4G LTE modules)
eSIM card	eSIM integrated in 4G LTE module
Docking connector for Port Replicator	1 - PR Model: NPR50
Kensington Lock support	1 - Recommendation: Kensington's Micro Security Saver

Port Replicator interfaces (optional)

	USB Type-C PR	Thunderbolt™ 4 PR	Mechanical PR Model: NPR50
DC-in	1 (19V/90W required)	1 (20V/170W required)	1 (19V/90W required)
Power on switch	1	1	1
Audio: line-in / line-out	---	---	1
Audio: comments	1 Combo jack for headset usage	1 Combo jack for headset usage	Combo-Port
USB 3.2 Gen1 (5 Gbps) total	---	---	4x Type-A 2x Type-C
DisplayPort	1x V1.2	2x V1.4++	2 (up to 2x 3840x2160 60Hz)
VGA	1	---	1 (up to 1920x1200 6Hz)
HDMI text	1	V 2.0b	1 (up to 4096x2160 60Hz)
Interface Notes	3x Type-A - 5V/0.9A, 4.5W 1x Type-C - 15W 1x Type-C - Up to 60 W (PD v2.0-1.1) power output to client or 4.5W input	2x Type-A - 5V/0.9A, 4.5W 1x Type-A - 5V/2.4A, 12W 2x Type-C - 5V, 1.5A/4.5W charging port 1x Type-C - TBT4 up to 60 W (PD v2.0-1.1), 5-20V/3.0A upstream (PC), Intel AMT support (vPRO) 1x Type-C - TBT4 up to 15 W (PD v2.0-1.1), 5V/3.0A downstream, power output to client	The shown up to resolutions are maximum values each port and will be different depending on Multi-Display combinations.

Port Replicator interfaces (optional)

Kensington Lock support	no	1	1 (lock Portrep only)
Ethernet (RJ-45)	1	1 (10/100/1000 Mbit/s, 2,5 Gbps)	1
Notes	Number of simultaneous used displays and its possible resolutions and frequencies depend on mobile system and display interface type. Please consult always also the manual of the connected client.		1 RJ45 (10/100/1000)

Keyboard and pointing devices

Spill-resistant keyboard, Available with standard keyboard or backlit keyboard
 Number of keyboard keys: 85, Keyboard pitch: 19 mm, Keyboard stroke: 1.7 mm
 Multi gesture touchpad with two mouse buttons

Wireless technologies

Antennas	2 Dual band WLAN antennas, +2 4G LTE antennas optional
Bluetooth	v5.1 (OS limitation) - hardware is v5.2 ready
Integrated WLAN	Intel WiFi 6E AX211 - WLAN, BT, SRD cat. 2
WLAN encryption	WPA/WPA2/WPA3 (Wi-Fi Protected Access)
WLAN notes	WiFi 6E is supported by Windows 11 OS only - Windows 10 OS supports WiFi 6 only. Import and usage according to country-specific regulations.
LTE/UMTS/GPS notes	Optional
Integrated WWAN	(4G) LTE Quectel EM05-G (Cat.4) - eSIM integrated - UMTS,LTE
NFC	No
GPS	Embedded in 4G module if configured with WWAN
AC Adapter	20 V / 65 W (3.25 A), 100 V - 240 V, 50 Hz - 60 Hz, 3-pin (grounded) Type-C AC-Adapter slim&light
AC Adapter	20 V / 65 W (3.25 A), 100 V - 240 V, 50 Hz - 60 Hz, 3-pin (grounded) Type-C AC-Adapter standard
1st battery options	Li-Ion battery 4-cell, 3,915 mAh, 60 Wh
1st battery	Lithium polymer battery 4-cell, 60 Wh, 3915 mAh
Battery features	Quick Charge: 80% in 1h
Runtime 1st battery	11h (up to)
Battery notes	Battery runtime information is based on worldwide acknowledged BAPCo® MobileMark® 2018. Refer to www.bapco.com for additional details. The BAPCo® MobileMark® Benchmark provides results that enable direct product comparisons between manufacturers. It does not guarantee any specific battery runtime which actually can be lower and may vary depending on product model, configuration, application and power management settings. The battery capacity decreases slightly with every re-charge and over its lifetime.

Noise emission

Noise emission Please refer to the Eco Declaration

Dimensions / Weight / Environmental

Dimensions (W x D x H)	322 x 211 x 19.9 mm 12.68 x 8.31 x 0.78 inch
Weight	1.35 kg (starting from)
Weight (lbs)	starting from 2.98 lbs
Weight notes	Weight may vary depending on actual configuration
Operating ambient temperature	5 - 35 °C (41 - 95 °F)
Operating relative humidity	20 - 80 %

Compliance

Product	LIFEBOOK E5413
Model	5E14A3
Germany	GS
Europe	CE CB
USA/Canada	FCC (depending on configuration)

Compliance

Global	ENERGY STAR® 8.0 TCO Certification in progress EPEAT® Gold (dedicated regions) in progress MIL-STD-810H tested
China	CCC (planned)
Compliance link	https://sp.ts.fujitsu.com/sites/certificates

Additional Software

Additional software (preinstalled)	Microsoft Office (1 month trial for new Microsoft® Office 365 customers. Buy Microsoft Office.) McAfee® LiveSafe™ (provides award-winning antivirus protection for your PC and much more. 30 days trial pre-installed) Fujitsu Plugfree Network (network management utility) Fujitsu Anytime USB Charge Utility Fujitsu Function Manager Fujitsu Battery Utility Fujitsu DeskUpdate (driver and utility tool)
Additional software (optional)	Drivers & Utilities DVD (DUDVD) Recovery DVD for Windows® Nero Essentials XL Microsoft® Office Professional 2021 Microsoft® Office Home and Business 2021 (Need to buy license to activate the pre-installed Microsoft Office. Purchase and activation only in the region in which it was acquired.)
Additional software (notes)	Use of accompanying and/or additional Software is subject to proactive acceptance of the respective License Agreements /EULAs/ Subscription and support terms of the Software manufacturer as applicable for the relevant Software whether preinstalled or optional. The software may only be available bundled with a software support subscription which – depending on the Software - may be subject to separate remuneration.
Manageability technology	Intel® vPro™ technology/iAMT (depending on processor) PXE Boot code Wake-on-LAN
Manageability software	DeskView Client DeskView Instant BIOS Management
Supported standards	WMI (Windows Management Instrumentation) PXE (Preboot Execution Environment) DMI (Desktop Management Interface) SMBIOS (System Management BIOS) CIM (Common Information Model) BootP (made4you)
Manageability link	https://www.fujitsu.com/global/products/computing/pc/manageability/
Physical Security	Kensington Lock support
System and BIOS Security	User and supervisor BIOS password
User Security	Embedded fingerprint sensor (optional) Embedded PalmSecure® sensor (optional) Smartcard reader (optional) TPM 2.0 Hard disk password
Security Notes	The properties of the product provide a baseline for product security and therefore end-customer IT security. However, these properties are not sufficient on their own to protect the product from all existing threats, such as intrusion attempts, data exfiltration and other forms of cyberattacks. To customize security settings, please use the configuration options as available for the respective product. During operation, the IT security of this product is within the responsibility of the respective administrator/end-user of the product. Please note, that Fujitsu as a manufacturer does not make any policy prescriptions or advocacy statements regarding IT security best practices and/or general product operation.

Warranty

Warranty period	3 years
Warranty type	Next Business Day Onsite Service (Metro areas only)
Warranty Terms & Conditions	http://www.fujitsu.com/warranty

Warranty

Digital bug fixes

Subject to availability and following their generic release for the product, bug fixes and function-preserving patches for product-related software (firmware) can be downloaded from the technical support at: <https://support.ts.fujitsu.com/> free of charge by entering the respective product serial number. For application software supplied together with the product, please directly refer to the support websites of the respective software manufacturer.

Product Support - the perfect extension

Recommended Service

9x5, Onsite Response Time: Next Business Day

Spare Parts availability

at least 5 years after shipment, for details see <https://support.ts.fujitsu.com/>

Service Weblink

<http://www.fujitsu.com/emeia/products/product-support-services/>

Recommended Accessories

Thunderbolt™ 4 Port Replicator



First Thunderbolt™ Port Replicator on the market providing enhanced security and full support of Intel® AMT (vPro®). The universal port can easily connect almost everything with a single cable and high speed-data transfer. This smart workspace solution keeps your desk clean and tidy.

Order Code:
FPCPR401BP

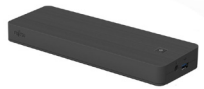
Port Replicator for LIFEBOOK
U7x13, U7x12, E5x13, E5x12,
U7411 and U7511



Flexibility, expandability, desktop replacement, investment protection – to name just a few benefits of Fujitsu's docking options.

Order Code:
FPCPR402BP

USB Type-C Port Replicator 2



Connect to your peripherals. Adapt to the task on demand. The universal USB Type-C interface supports you to get your peripheral devices connected easily. Multiply your USB ports to connect your peripherals as well as your external display via HDMI, DisplayPort or VGA. You also can charge your external USB devices without the need of any additional charger.

Order Code:
S26391-F3327-L100

More information

Fujitsu products, solutions & services

In addition to Fujitsu Notebook LIFEBOOK E5413, Fujitsu provides a range of platform solutions. They combine reliable Fujitsu products with the best in services, know-how and worldwide partnerships.

Fujitsu Portfolio

Build on industry standards, Fujitsu offers a full portfolio of IT hardware and software products, services, solutions and cloud offering, ranging from clients to datacenter solutions and includes the broad stack of Business Solutions, as well as the full stack of Cloud offering. This allows customers to leverage from alternative sourcing and delivery models to increase their business agility and to improve their IT operation's reliability.

Computing Products

www.fujitsu.com/global/products/computing/

Software

www.fujitsu.com/software/

More information

Learn more about Fujitsu Notebook LIFEBOOK E5413, please contact your Fujitsu sales representative or Fujitsu Business partner, or visit our website.
www.fujitsu.com/emeia/products/computing/pc/notebooks/index.html

Fujitsu green policy innovation

Fujitsu Green Policy Innovation is our worldwide project for reducing burdens on the environment.

Using our global know-how, we aim to contribute to the creation of a sustainable environment for future generations through IT.

Please find further information at <http://www.fujitsu.com/global/about/environment/>



Copyrights

All rights reserved, including intellectual property rights. Changes to technical data reserved. Delivery subject to availability. Designations may be trademarks and/or copyrights of the respective manufacturer, the use of which by third parties for their own purposes may infringe the rights of such owner. For further information see <http://www.fujitsu.com/emeia/resources/navigation/terms-of-use.html>
Copyright 2023 Fujitsu Technology Solutions GmbH

Disclaimer

Please note that the data sheet reflects the technical specification with the maximum selection of components for the named system and not the detailed scope of delivery. The scope of delivery is defined by the selection of components at the time of ordering. Technical data is subject to modification and delivery subject to availability. Any liability that the data and illustrations are complete, actual or correct is excluded. Designations may be trademarks and/or copyrights of the respective owner, the use of which by third parties for their own purposes may infringe the rights of such owner. The overall product has been designed and manufactured for general office use, regular personal use and ordinary industrial use.

CONTACT

Fujitsu Technology Solutions GmbH
Website: www.fujitsu.com
2023-04-25 EM-EN

All rights reserved, including intellectual property rights. Changes to technical data reserved. Delivery subject to availability. Designations may be trademarks and/or copyrights of the respective manufacturer, the use of which by third parties for their own purposes may infringe the rights of such owner. For further information see <http://www.fujitsu.com/emeia/resources/navigation/terms-of-use.html>
Copyright 2023 Fujitsu Technology Solutions GmbH