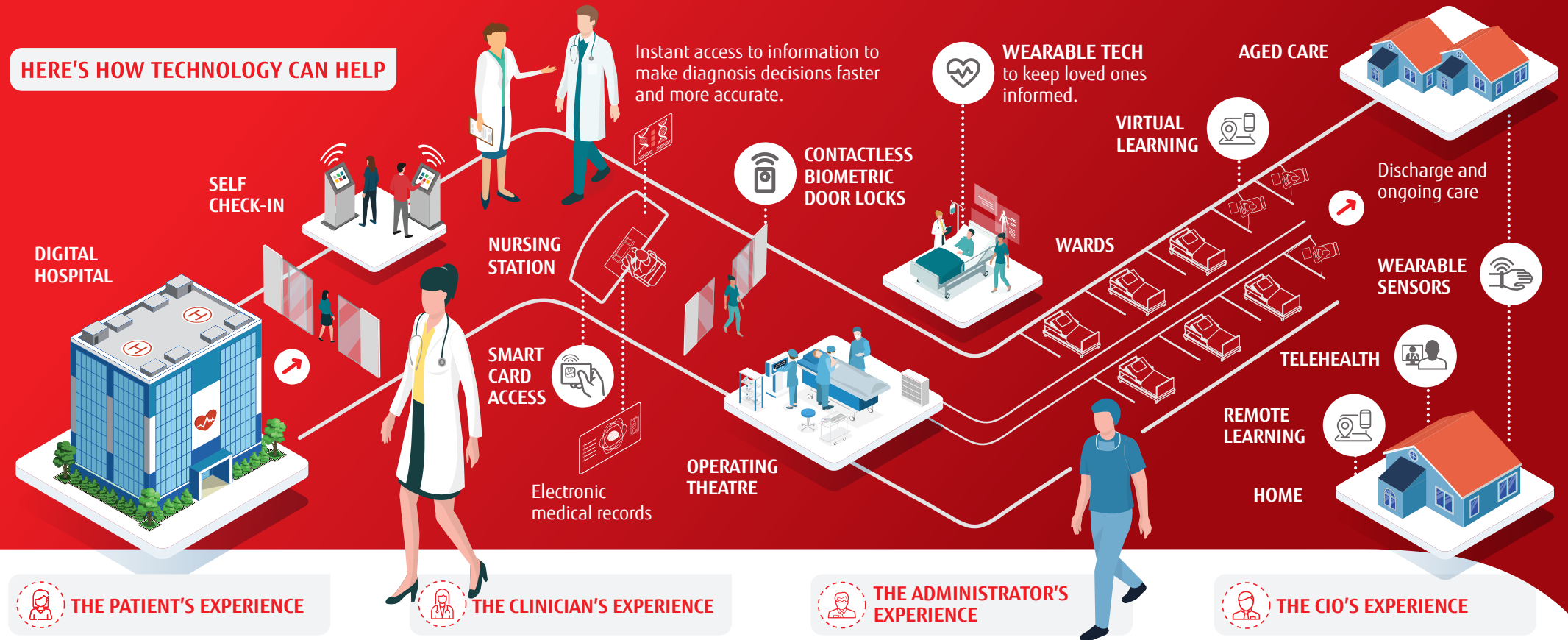


# A human-centric vision for the future of healthcare

Technology is delivering better health outcomes for patients and providers alike. A rapidly changing landscape is putting pressure on decision-makers to find fast solutions for emerging challenges ranging from patient privacy and growing patient expectations to rising demands on existing systems and unexpected events such as the COVID-19 pandemic.

## HERE'S HOW TECHNOLOGY CAN HELP



**FIRST CONTACT:** smart technologies streamline patient intake. Patients are directed to the right facility to speed access to treatment. Diagnosis and treatment are augmented by online, integrated health records.

**DURING TREATMENT:** wearable technologies allow remote diagnosis and increased monitoring.

**DISCHARGE AND ONGOING CARE:** wearable sensors monitor discharged patients, prompting them if medical intervention is needed. Elderly patients are less vulnerable with real-time monitoring.

**CARE DELIVERY:** instant information access and AI make diagnoses and decisions faster and more accurate in all patients.

**WORKING ENVIRONMENT:** smart buildings, locks, storage, and more make the working environment more comfortable and safer. Patient care can be individualised easily.

**CORPORATE SERVICES:** automation reduces the cost of care. Data analytics power decision-making. Risk of post-discharge complications and readmission is reduced. Increased data security drives compliance.

**RESEARCH AND TRAINING:** increased innovation through design thinking. Skills growth through virtual learning across all disciplines.

**SECURITY AND DISASTER RECOVERY:** secure solutions with strong business continuity capabilities protect patient data.

**REMOTE WORKING:** smart, agile solutions let staff members work effectively from anywhere.

**FLEXIBILITY:** scalable solutions cater for demand in an epidemic or pandemic, while complying with all regulations.

**Putting the patient at the heart of every conversation will deliver better outcomes. Meanwhile, everyone involved in the patient's care needs the right tools to empower patient-centred operations.**

**FUJITSU**

Contact Fujitsu today to find out how we can help you bring your human-centric vision to life