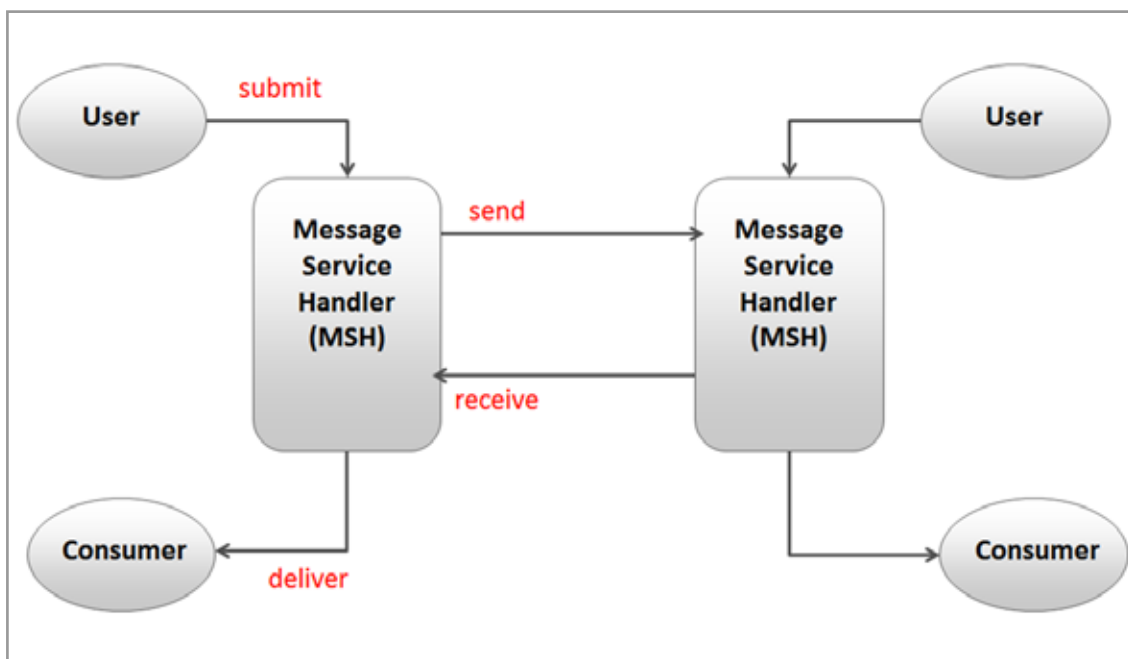
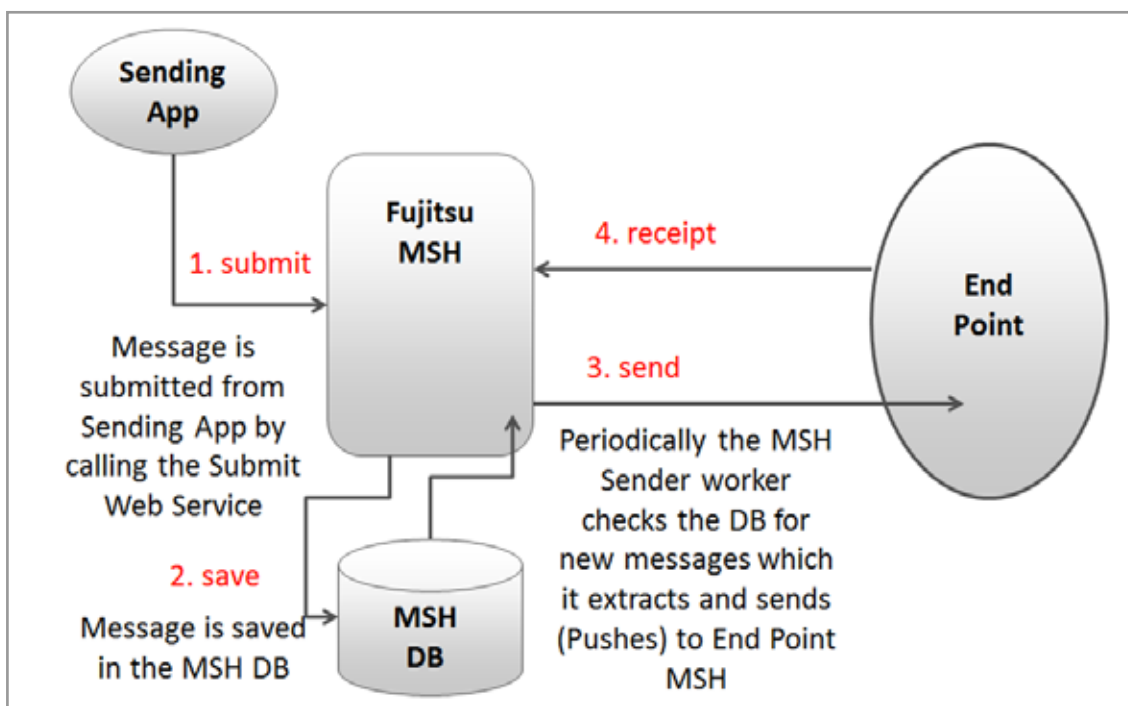


ebMS3 Messenger MSH flow diagrams

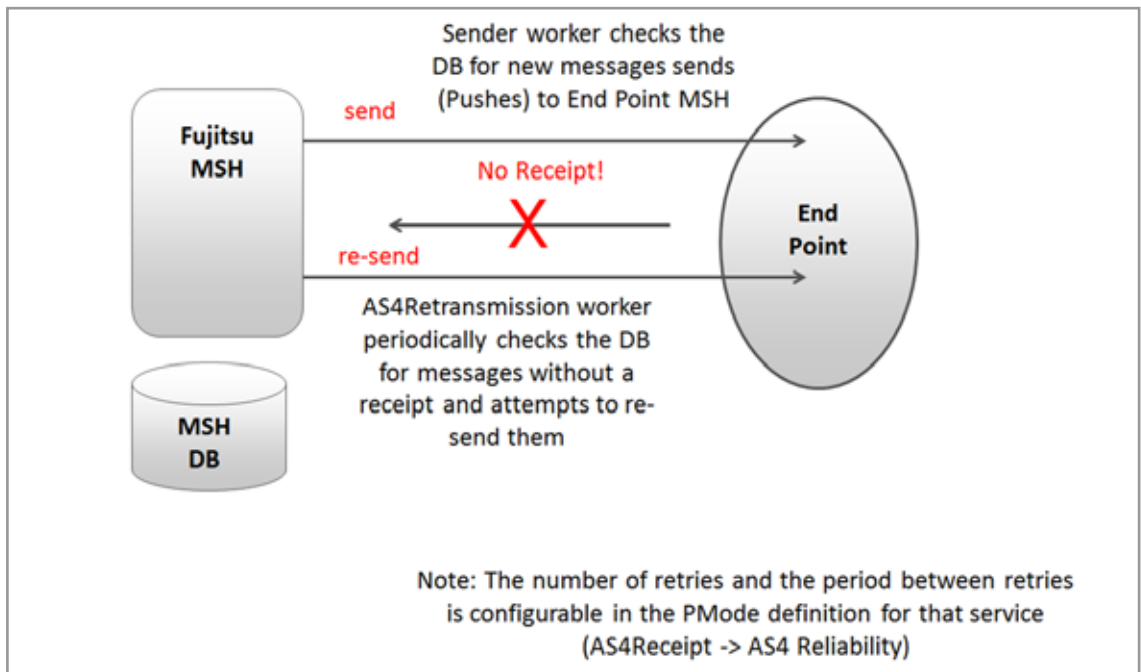
ebMS3 - Basic Flow Terminology



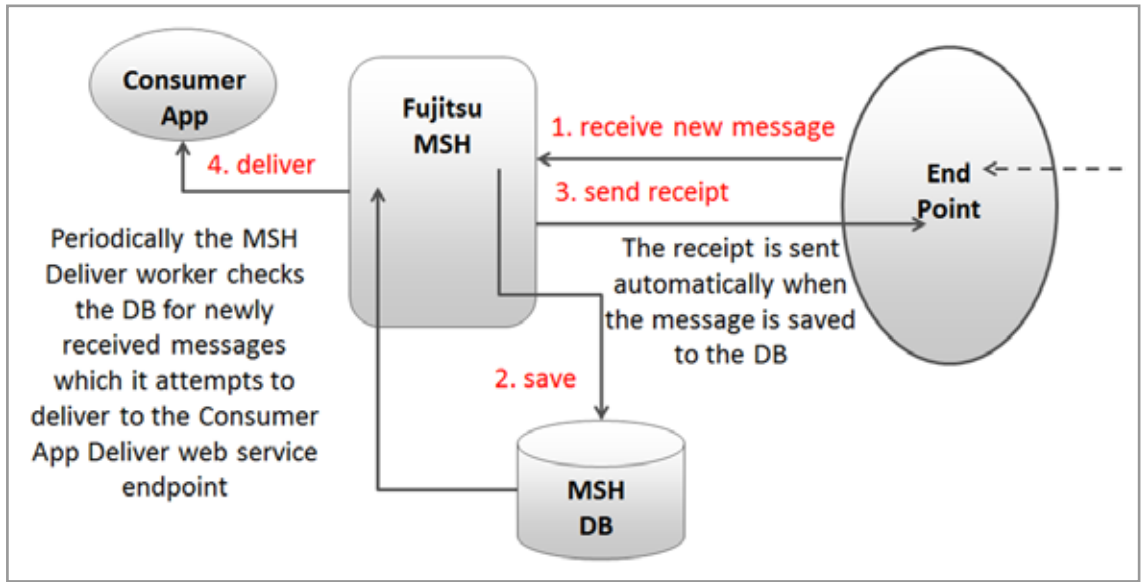
ebMS3 - Outgoing Message



ebMS3 - Outgoing Receipt Handling



ebMS3 - Incoming Message



Contact

Australia Head Office
 Phone: +61 (0)2 9113 9200
 E-mail: askus@au.fujitsu.com
 Website: au.fujitsu.com

New Zealand Head Office
 Phone: +64 (0)4 495 0700
 E-mail: askus-nz@nz.fujitsu.com
 Website: nz.fujitsu.com

Subject to contract.
 Accuracy: Fujitsu endeavours to ensure that the information contained in this document is correct but, whilst every effort is made to ensure the accuracy of such information, it accepts no liability for any loss (however caused) sustained as a result of any error or omission in the same.
 © Fujitsu Australia 2014. All rights reserved. No part of this document may be reproduced, stored or transmitted in any form without the prior written permission of Fujitsu Australia Ltd.