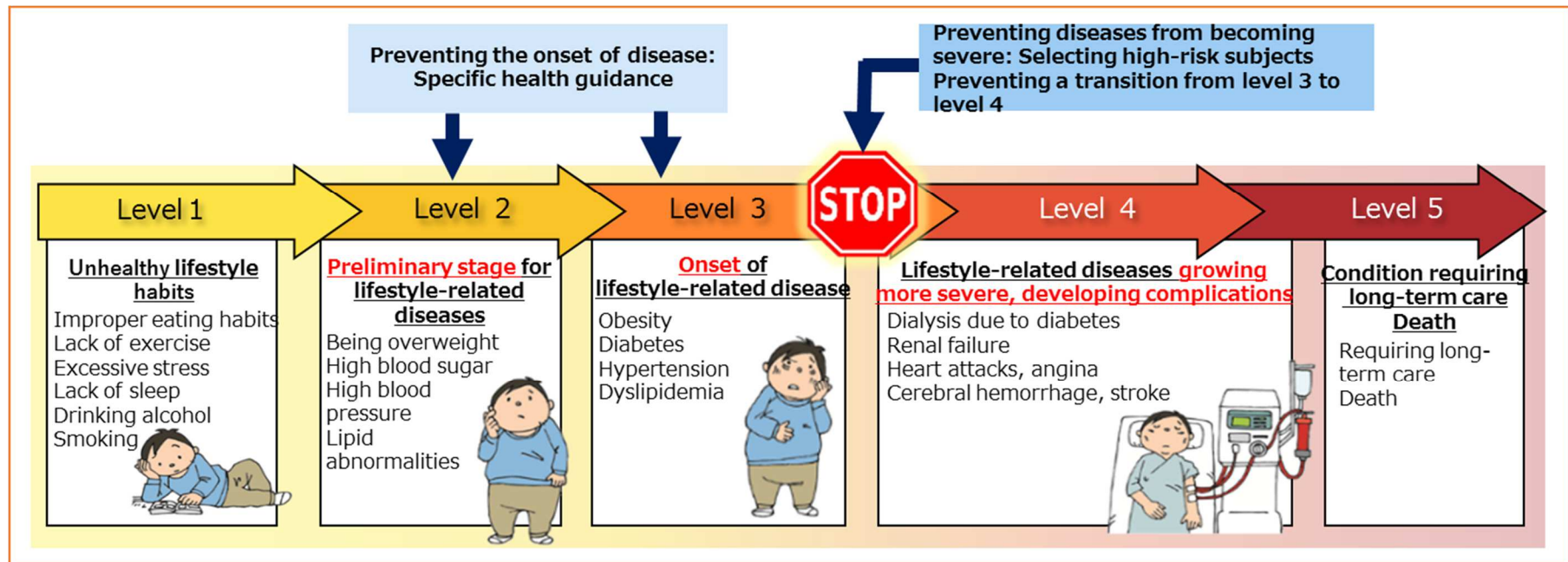


Project to Prevent Diseases from Becoming Severe

We are engaged in a project to prevent diseases from becoming severe by utilizing health checkup data and medical prescription data to recommend medical examinations and provide health guidance for employees who are at high risk for suffering from a serious disease, and who have not had consultations at a medical institution, leading to medical care.



Conditions for selecting high-risk subjects

Disease	Health checkup data	Medical prescription data					
1) Diabetes	HbA1c level 8.0% or higher, 160 mg/dl or higher for blood sugar on an empty stomach for those not implementing HbA1c	Whether or not the subject is receiving diabetes-related treatment					
2) High blood pressure	160/100 mmHg or higher	Whether or not the subject is receiving high blood pressure-related treatment					
3) CKD	CKD classifications by severity, 3 and 4						
		Albuminuria stage *Urinalysis test strip					
		eGFR ↓	(-)(±)	(1+)	(2+)	(3+)	
	Renal function stage	G 1	≥90	0	1	2	4
		G 2	60-89	0	1	2	4
		G 3 a	45-59	1	2	3	4
G 3 b		30-44	2	3	3	4	
G 4		14-29	3	3	3	4	
G 5	>15	4	4	4	4		
		Whether or not the subject is receiving lifestyle disease-related treatment					

Disease not included: kidney dialysis, type 1 diabetes, cystic kidney disease, end-stage renal disease

Flow of the project to prevent diseases from becoming more severe

