

# Data Sheet

## FUJITSU Storage ETERNUS CS200c Professional Services: Deployment Service

---

### INTRODUCTION

The Fujitsu Storage ETERNUS CS200c Integrated Backup Appliance was developed, based on Fujitsu hardware and CommVault Simpana data protection software.

With the approach "Simplicity is the key", main focus of the ETERNUS CS200c functionality is on:

- ✓ Reduced deployment efforts like time, skills and customer involvement
- ✓ Simplification and tight integration within customer's environment
- ✓ Seamless incorporation of server, storage, operating system and the data protection software
- ✓ Easy configuration and administration
- ✓ Easy scalability and maintenance

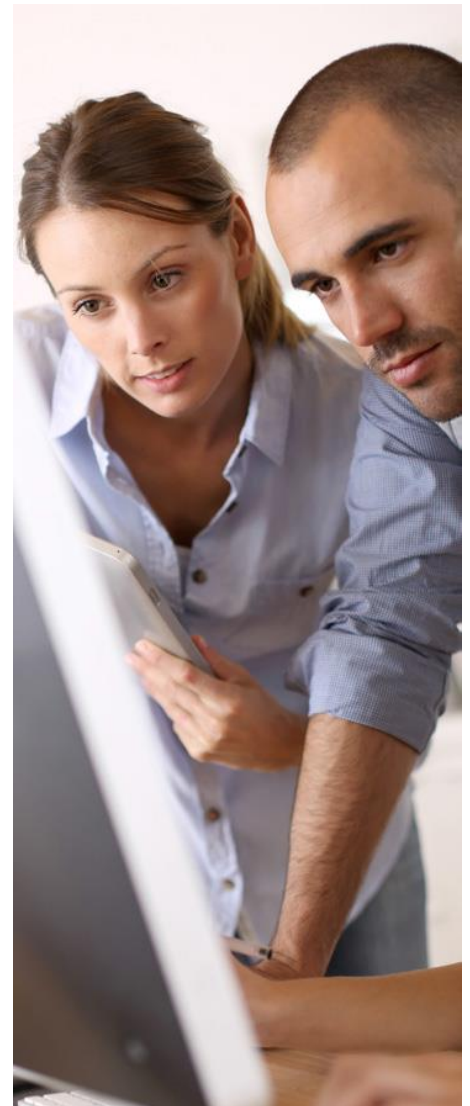
### BENEFITS

Fujitsu Professional Services, a 'one stop shop' consultancy practice within Fujitsu UK's Products Group, will provide an installation and configuration service for the backup appliance and its clients.

Under the Deployment Service the CS200c will be configured to serve file based data protection from Windows, Linux or UNIX clients. In addition the configuration can also be extended to a small Virtual Machine environment with consistent backups from VMware or Hyper-V hosts to the internal disk based backup storage.

Deduplication and compression will be included to prevent unnecessary data consumption on the back end storage.

As part of a final assessment you will receive reasonable suggestions for follow up activities, e.g. to integrate applications like databases or email systems into the data protection concept. These shall form the basis of an ETERNUS CS200c Advanced Deployment Service.



## Service in Detail

The Deployment Service can commence once the ETERNUS CS200c is available at the customer site with the necessary power and network connectors and rack space. A contact who is able to clarify questions needs to be available.

The Deployment Service ensures operational readiness of the ETERNUS CS200c appliance. Therefore an initial discovery meeting is needed which can be done remotely or in person, the output of which is a completed questionnaire.

The Deployment Service covers the following:-

- Physical installation of the ETERNUS CS200c hardware into the rack.
  - Ensure correct cabling is present for power, LAN and SAN
  - If available, run firmware or BIOS updates.
  - Configure iRMC for the remote system access.
  - Basic configuration of the Windows operating system.
- Main tasks are:

- Check the active directory integration.
  - Create Simpana backup user account.
  - Check network configuration e.g. DNS name resolution and reachability of the clients.
  - RAID configuration of the ETERNUS JX40.
- Simpana administrator access.
  - Creation of CommCell.
  - Single sign on configuration.
  - License administration.
  - Email alerting.
  - Index and disaster recovery backup settings.
  - Application server integration:
    - Rollout and configuration includes up to five file based clients.
    - Operating system, Windows, Linux or UNIX are supported; details on OS and version are checked before, see questionnaire.
  - A virtualization environment with up to three clustered physical hosts can be added, Hypervisor must be VMware or Hyper-V.
  - Backup of the virtualized environment is limited to complete virtual machines. Nevertheless granular recovery is possible.
  - After the client roll out and configuration, a basic customer specific backup schedule with individual retention periods will be implemented.

- The Deployment Service will be finished with functionality tests to verify that the solution works as agreed.

### Solution handover

Comprises of a short briefing regarding the implemented functions. Operating staff will be given instructions and hints for best practice in daily work, manageability and monitoring.

In order to understand and handle the software fully, the Simpana Administrator training course is strongly advised.

A "Ready to Service" document with the installation and configuration details will be created. It is the interface to the Fujitsu Service and Maintenance group.

The ETERNUS CS200c Deployment Service is completed with a brief assessment of reasonable further optional configuration steps. If applicable, the customer will get a proposal for application integration into the Simpana solution or using integrated advanced features.

### Service Conditions

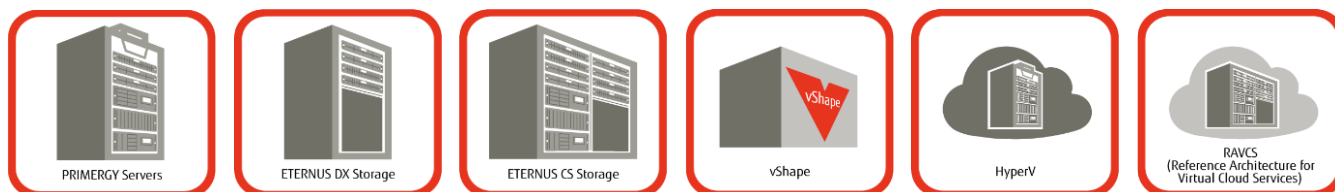
The customer agrees to the following conditions as pursuant to the delivery of the service defined:

- Access to the data centre and required systems.
- The ETERNUS CS200c questionnaire is finalised.
- Provision of all information necessary for the installation on or before the delivery date.
- LAN/SAN connectivity and physical infrastructure (e.g. electricity, facilities, cabling etc.) are available.
- A customer contact available for the duration of the service to clarify questions and provide information, access and passwords when required.

## How to Order

FSP:G-IN05700GBSV2 ETERNUS CS200c SCC

FSP:G-IN05700GBST1 ETERNUS CS200c SCP



If you want to see how Fujitsu Professional Services could transform your organisation's IT, contact us at [ukrofsservices@uk.fujitsu.com](mailto:ukrofsservices@uk.fujitsu.com) or call 0843 3541815

## Fujitsu products, solutions & services

### Products

[www.fujitsu.com/global/products/](http://www.fujitsu.com/global/products/)

In addition to the Fujitsu Support services, Fujitsu offers a full portfolio of other computing products.

### Computing products

- Storage systems: ETERNUS®
- Server: PRIMERGY®, PRIMEQUEST®, Fujitsu SPARC® M10, BS2000®/OSD Mainframe
- Client Computing Devices: LIFEBOOK®, STYLISTIC®, ESPRIMO®, FUTRO®, CELSIUS®
- Peripherals: Fujitsu Displays, Accessories
- Software
- Network

Product Support Services with different service levels agreements are recommended to safeguard each product and ensure smooth IT operation.

### Solutions

<http://www.fujitsu.com/global/solutions>

The Fujitsu solutions combine reliable Fujitsu products with the best in services, know-how and worldwide partnerships. Fujitsu's Solutions include parts of one or more activity groups (e.g., planning, implementation, support, management, and training services) and are designed to solve a specific business need.

**Infrastructure Solutions** are customer offerings created by bringing Fujitsu's best products, services and technologies together with those from partners to deliver benefit to our customers' businesses.

**Industry Solutions** are tailored to meet the needs of specific verticals.

**Business and Technology Solutions** provide a variety of technologies developed to tackle specific business issues such as security and sustainability, across many verticals.

### Services

[www.fujitsu.com/global/services/](http://www.fujitsu.com/global/services/)

Several customizable Fujitsu Service offerings ensure that IT makes a real difference and delivers true business value. We do this by leveraging our extensive experience in managing large, complex, transformational IT programs to help clients in planning, delivering and operating IT services in a challenging and changing business environment.

**Application Services** support the development, integration, testing, deployment and on-going management of both custom developed and packaged applications. The services focus on delivering business and productivity improvements for organizations.

**Business Services** respond to the challenge of planning, delivering and operating IT in a complex and changing IT environment.

**Managed Infrastructure Services** enable customers to deliver the optimal IT environment to meet their needs; achieving high levels of IT service quality and performance for data centre and end user environments.

## Fujitsu green policy innovation

[www.fujitsu.com/global/about/environment/](http://www.fujitsu.com/global/about/environment/)

Fujitsu Green Policy Innovation is our worldwide project for reducing burdens on the environment. Using our global knowhow, we aim to resolve issues of environmental energy efficiency through IT.



### More Information

Learn more about Fujitsu, please contact your Fujitsu sales representative, Fujitsu business partner, or visit our website <http://www.fujitsu.com/fts/services/support/>

### Copyright

© 2017, Fujitsu Services Limited. Fujitsu and the Fujitsu logo are trademarks or registered trademarks of Fujitsu Limited in Japan and other countries.

ETERNUS®, PRIMERGY®, PRIMEQUEST®, BS2000®/OSD Mainframe, LIFEBOOK®, STYLISTIC®, ESPRIMO®, FUTRO®, CELSIUS® are registered trademarks of FUJITSU Limited or its affiliates in the US, Japan and/or other countries. SPARC® is a trademark of SPARC International Inc. in the US and in other countries and is used under license.

### Disclaimer

Technical data subject to modification and delivery subject to availability. Any liability that the data and illustrations are complete, actual or correct is excluded. Designations may be trademarks and/or copyrights of the respective manufacturer, the use of which by third parties for their own purposes may infringe the rights of such owner.

### Published by:

Fujitsu Services Limited  
22 Baker Street, London, W1U 3BW