

Digital Workplace

Fujitsu World Tour 2017

FUJITSU
shaping tomorrow with you

Human Centric Innovation

Digital Co-creation



Digital is enabling

- Disruptive new business models
- The introduction of new value-driven services that reduce costs
- Smarter decision-making based on empirical data
- Co-creation and new types of partnerships
- Exciting new experiences that boost growth



Market Drivers & Trends impacting the workplace

How do you manage this complexity and balance demands?



Business drivers

- Business value
- Data security
- Legacy modernization
- Property consolidation
- Digitization
- Speed to market
- Generational fusion



Technology enablers

- Wearables
- IOT
- Commodity IT
- Artificial intelligence
- Augmented reality
- Big Data and analytics
- Biometrics and security



User needs

- Always-on
- Right data at the right time
- Collaborate
- Personalized and contextual
- Flexible working

Moving away from a One Size Fits all IT

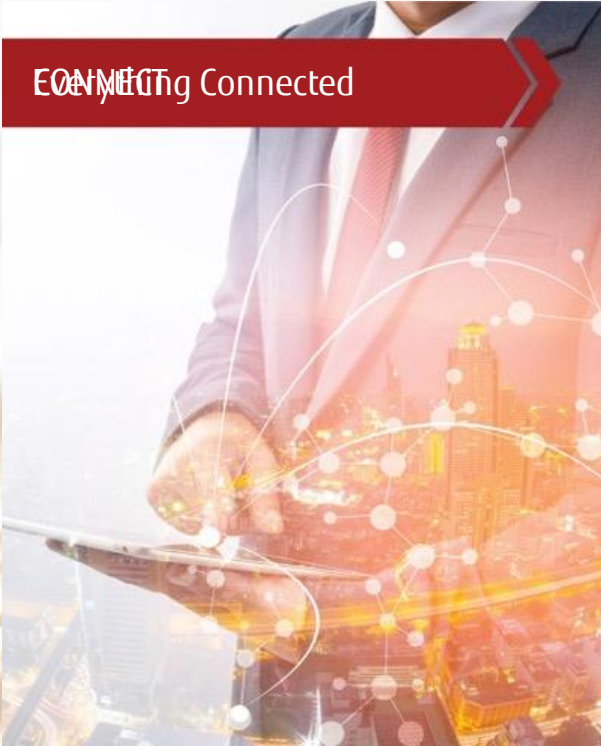


To survive, your business needs to...



Today's users demand more...

CONNECTING
Economic Connected



COLLABORATE
Empowered and Personalized



INNOVATE
Data-Driven Intelligence





Empowered and Personalized

Apps

Users

Data



All connected to enable Creativity

Fujitsu Workplace Anywhere



Delivering a connected, agile, intelligent and personalised workplace for all your users digital needs

Hybrid Workplace Services. The right blend of traditional managed desktop and cloud services to give you increased agility within complex, mission critical environments.



Cloud Workplace Services. Work from any device, communicate and collaborate securely. Use the evergreen apps and services that make you most effective.



Virtual Workplace Services that accelerate your business priorities. Bridging business apps to the Cloud, and enabling access to the global labour market.

Fujitsu Workplace Anywhere in the real world



ROBECO The Investment Engineers

» Fujitsu came out on top with its 'small enough to care; big enough to deliver' message and its clear ability to support our global operations while giving us the attention we needed at head office.«

Ton Ligtoet
Executive Director IT
Sourcing Architecture and
Portfolio Management,
Robeco



Challenges

- Attracting the best talent available
- Business agility
- Predicable costs
- Finding a global partner that felt local



Solution

- Deployed an integrated, Microsoft technology based Digital Workplace
- Introduced integrated Windows10, Skype for Business, Office365 and OneDrive for Business globally
- Allowed employees to choose own devices. Data is secure
- Provided IT Connect bar for onsite support combined with a 24/7 global service desk



Benefits

- Increased productivity in the field
- Empowered users through self-service
- Increased employee satisfaction and advocacy
- Evergreen: Latest technologies available now

Fujitsu Workplace Anywhere: key takeaways



Workplace Anywhere is the foundation of your digital workplace. Enabling you to...



...reduce the costs of your managed desktop environment through cloud managed services



...to securely use the apps, services and partner to make you more productive



...choose your own workplace

Our approach

You can choose from two approaches to support your workplace transformation.



Arrange a workplace assessment

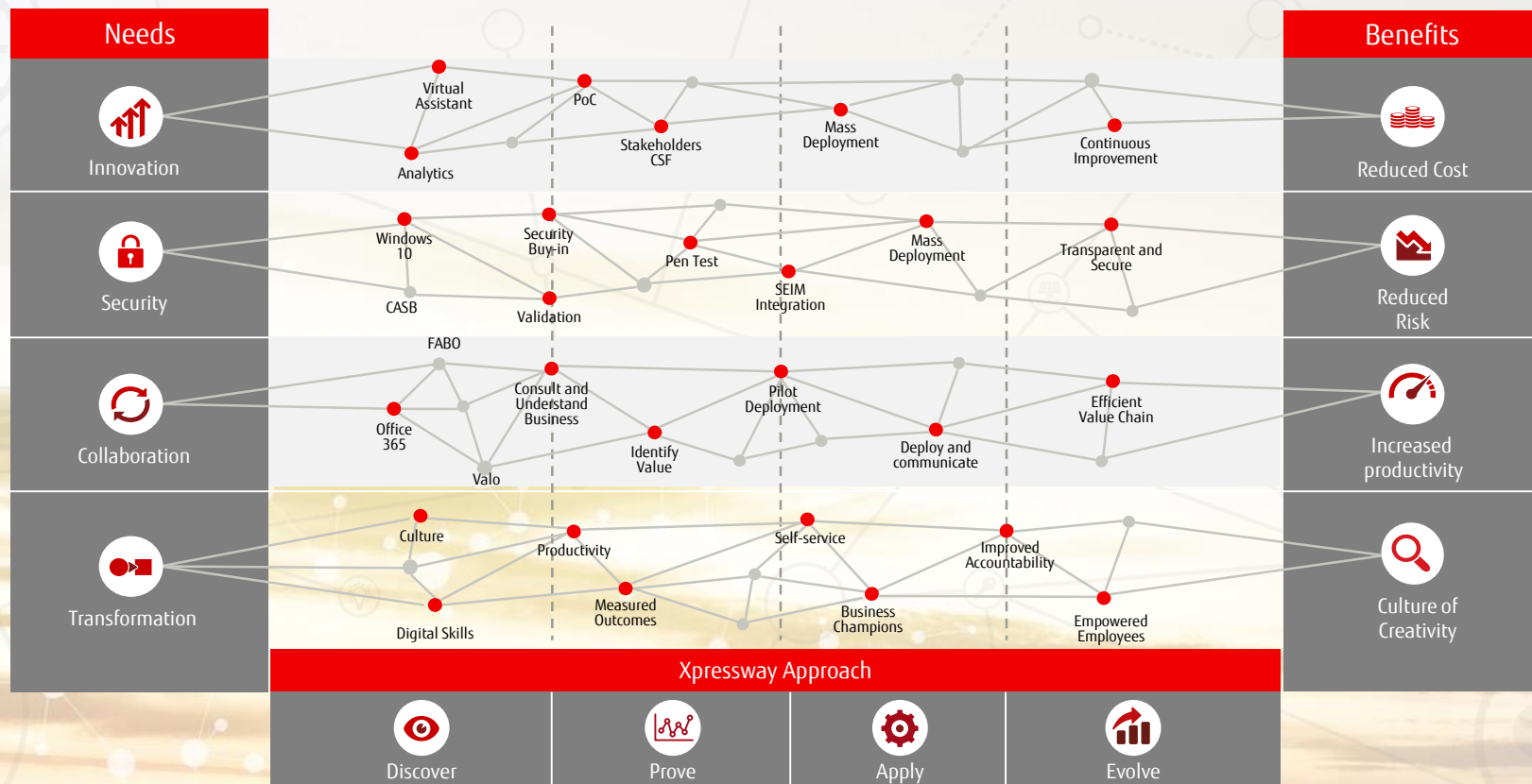
- Gives you a consultative approach based on a proven methodology
- Provides in-depth analysis of your current environment
- Takes your specific business needs into account



Use our analytics platform

- Gives you insight into your workplace requirements
- Provides proof of value based on data
- Helps you plan your workplace transformation

Transformation based on a personalized roadmap



Why Fujitsu?



We manage over 5 million desktop devices worldwide.



Our mobility solutions are device, carrier and date-source agnostic.



We're a leader in the Gartner Magic Quadrant for Managed Workplace Services.



We have global capabilities available both onshore and offshore, five global delivery centers, and local service desks in more than 30 countries.



We can offer an end-to-end service, from service to product.

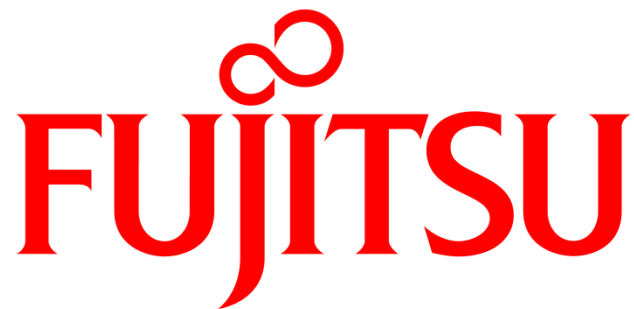


We're secure. Our clients include military, security, central government, and major financial services organizations.



Our consultative approach helps customers find the most cost-effective ways to increase productivity.

Visit <https://digitalworkplace.global.fujitsu.com>



shaping tomorrow with you

digitalworkplace.global.fujitsu.com