

PR-LN4 Software Guide

Fujitsu Dot Matrix Printer
DL7600Pro / DL7400Pro

ABBREVIATIONS USED IN THIS MANUAL

Windows® 11 Education Windows® 11 Enterprise Windows® 11 Pro Windows® 11 Home	referred to as Windows 11
Microsoft® Windows Server® 2022 Datacenter Microsoft® Windows Server® 2022 Standard Microsoft® Windows Server® 2022 Essentials	referred to as Server 2022
Microsoft® Windows Server® 2019 Datacenter Microsoft® Windows Server® 2019 Standard Microsoft® Windows Server® 2019 Essentials	referred to as Server 2019
Microsoft® Windows Server® 2016 Datacenter Microsoft® Windows Server® 2016 Standard Microsoft® Windows Server® 2016 Essentials	referred to as Server 2016
Windows® 10 Education Windows® 10 Enterprise Windows® 10 Pro Windows® 10 Home	referred to as Windows 10
Microsoft® Windows Server® 2012 R2 Datacenter Microsoft® Windows Server® 2012 R2 Standard Microsoft® Windows Server® 2012 R2 Essentials	referred to as Server 2012 R2
Windows® 8.1 Enterprise Windows® 8.1 Pro Windows® 8.1	referred to as Windows 8.1
Microsoft® Windows Server® 2012 Datacenter Microsoft® Windows Server® 2012 Standard Microsoft® Windows Server® 2012 Essentials	referred to as Server 2012
Windows® 8 Enterprise Windows® 8 Pro Windows® 8	referred to as Windows 8
Microsoft® Windows Server® 2008 R2 Enterprise Microsoft® Windows Server® 2008 R2 Standard	referred to as Server 2008 R2
Windows® 7 Ultimate Windows® 7 Enterprise Windows® 7 Professional Windows® 7 Home Premium Windows® 7 Starter	referred to as Windows 7

ABOUT THE TRADEMARK

Company names and product names given in this document are registered trademarks or trademarks of their respective companies.

TABLE OF CONTENTS

ABBREVIATIONS USED IN THIS MANUAL.....	2
ABOUT THE TRADEMARK	2
TABLE OF CONTENTS	3
CHAPTER 1 INTRODUCTION	4
1.1 OVERVIEW	4
1.2 RELATED DOCUMENTS	4
1.3 SYSTEM REQUIREMENTS	4
1.4 DESCRIPTION of EQUIPMENT	5
1.4.1 NAMES AND OPERATION OF EACH COMPONENT	5
1.4.2 CONNECTIONG TO A NETWORK.....	6
1.5 HOW TO USE THIS MANUAL	7
CHAPTER 2 USING THE PR-LN4 IN A WINDOWS ENVIRONMENT	8
2.1 CHECK THAT THE INTERNET PROTOCOL	9
2.1.1 ON WINDOWS 7 AND LATER	9
CHAPTER 3 CONFIGURATION USING THE LAN SETTING TOOL.....	11
3.1 INSTALLATION.....	11
3.2 OPERATING PROCEDURE.....	14
3.2.1 STARTING	14
3.2.2 PR-LN4 SETTINGS	15
3.2.3 ADDING AN ORIGINAL TCP/IP PORT	18
3.2.4 CHANGE OF PORT	19
CHAPTER 4 PRINTING USING THE REGULAR OPERATING SYSTEM PRINT CLIENT.....	20
4.1 ON WINDOWS 7 AND LATER.....	20
CHAPTER 5 CONFIGURING USING A WEB BROWSER.....	23
5.1 DISPLAYING THE PR-LN4 WEB PAGE	23
5.2 CONFIGURATION SETTINGS FROM THE PR-LN4 WEB PAGE ...	24
5.3 PR-LN4 WEB PAGE MENU STRUCTURE	24
5.4 PRINT SERVER FUNCTIONS	25
CHAPTER 6 TROUBLESHOOTING	27
6.1 PROBLEMS DURING INSTALLATION	27
6.2 PROBLEMS DURING PRINTING	29
6.3 PROBLEMS IN THE WINDOWS TCP/IP ENVIRONMENT	30
CHAPTER 7 USAGE WARNINGS	32

CHAPTER 1 INTRODUCTION

1.1 OVERVIEW

This manual describes how to configure and how to use the PR-LN4 used by the printer.

Read this manual thoroughly to ensure you use the product correctly and safely.

When using a Windows printer driver via the LAN, you need to configure the LAN information and create an original TCP/IP ports for this printer. You can configure these settings easily by using the "LAN Settings Tool".

1.2 RELATED DOCUMENTS

Related documents are shown in the following table. Refer to them as necessary.

Document Name	Reference Folder / File Name
User's Manual	\Documents\User's Manual\Printer Name\Language\Cxxx-Exxx-01xx.PDF
Printer Driver Installation Guide	\Documents\Install Guides\Installguide_xx.PDF
Status Monitor User's Manual	\Documents>Status Monitor User's Manual>StatusMonitorUser'sManual_xx.PDF

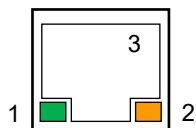
1.3 SYSTEM REQUIREMENTS

- (1) Personal computers equipped with the following interfaces and running a supported operating systems.
- (2) The ".NET Framework 3.5 SP1" or higher is required in order to use this tool.
If it is not installed, obtain and install the ".NET Framework 3.5 SP1" from the Microsoft website.
- (3) Administrator privileges are required in order to run this tool.
Log into the Administrators account to run.

1.4 DESCRIPTION of EQUIPMENT

1.4.1 NAMES AND OPERATION OF EACH COMPONENT

Panel Unit



DIP SW



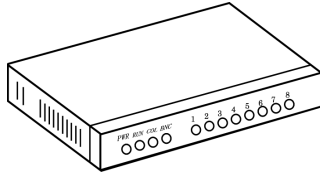
Panel Unit	Function
(1) S (Speed) LED (Green)	Turns on when the connection is detected as 100BASE-TX. Turns off when not connected or when the connection is detected as 10BASE-T.
(2) L/A (Link/Act) LED (Orange)	Turns on when a link is established as 100BASE-TX or 10BASE-T. Flashes when receiving a packet.
(3) Network port (auto detects 10BASE-T/100BASE-TX)	Connects to the network cable. (Category 5 or higher for a 100BASE-TX network)

DIP SW	Function	
	OFF	ON
SW 1	DHCP Enabled	DHCP Disabled (*1)
SW 2	-	Initialize the LAN card settings.
SW 3	-	Print the list of present setting value.
SW 4 (Reserve)	-	-

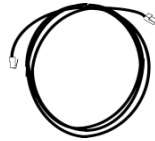
*1) When DHCP disabled, IP Address is 192.168.192.168.

1.4.2 CONNECTIONG TO A NETWORK

In order to connect the PR-LN4 to a network, prepare the following items.



Ethernet Hub



Network Cable

*1) If you are using the printer in a 100BASE-TX network, prepare an Ethernet hub and network cable (category 5 or higher) that support 100BASE.

< How to connect to the network >




- (1) Check that the printer is turned off.
- (2) Connect the network cable to the PR-LN4 network port (10BASE-T/100BASE-TX).
- (3) Connect another network cable to the Ethernet hub.
- (4) Turn the printer on, and check the S LED on the PR-LN4.

1.5 HOW TO USE THIS MANUAL

The FUJITSU DL7400Pro printer is used as an example for the explanations in this document.

Since the operating procedures (explanations) may vary depending on the Operating System, read these expressions as the Operating System you are using by referring to the following.

[All Programs]

Operating System	Procedure
Windows 11	Click the Windows logo button, and click [All Apps] .
Server 2022 Server 2019 Server 2016 Windows 10	Click the  Windows logo button in the lower-left corner of the desktop screen.
Server 2012 R2 Windows 8.1	Move the mouse cursor in the Start screen, and click  .
Server 2012 Windows 8	Right-click the Start Screen, and click [All Apps].
Windows 7	Click the  Windows logo button in the lower-left corner of the desktop screen and then click [All Programs].
Server 2008 R2	Select [Start] → [All Programs].

[Add a printer]

Operating System	Procedure
Windows 11 Server 2022 Server 2019 Server 2016 Windows 10	(1) Select the "All Programs", and then select [Windows System] or [Windows Tool]. (2) Click [Control Panel] - [View devices and printers] - [Add a printer].
Server 2012 Server 2012 R2 Windows 8.1 Windows 8	(1) Press the Windows logo key + X key, shortcut menu is displayed bottom left of the screen. (2) Click [Control Panel] - [Hardware and Sound] ^{(*)1} - [Devices and Printers] - [Add a printer].
Server 2008 R2 Windows 7	Click [Start] ^{(*)2} - [Devices and Printers] - [Add a printer].

*1) For Server Operating system: [Hardware].

*2) Displays as a Windows logo in the bottom left of the screen.

CHAPTER 2 USING THE PR-LN4 IN A WINDOWS ENVIRONMENT

This section describes how to connect to the PR-LN4 and print using TCP/IP in a Windows environment. The procedure for printing using the PR-LN4 over the TCP/IP protocol is as follows.

- STEP1:** Check the network settings on the computer
- STEP2:** Configure the IP address using the LAN Settings Tool
- STEP3:** Configure the printer port using the LAN Settings Tool
- STEP4:** Print

- *1) Install the printer driver on the computer you are using in advance.
- *2) Administrator privileges are required to configure the settings.
- *3) If you are using Windows 7 and later and the [User Account Control] screen appears, select [Yes].
- *4) If you are printing using the regular print client on Windows operating system, refer to "Printing Using the Regular operating system Print Client".

2.1 CHECK THAT THE INTERNET PROTOCOL

2.1.1 ON WINDOWS 7 AND LATER

Check that the [Internet Protocol Version 4 (TCP/IPv4)] has been added to Windows 7 and later.

(1) Select [Start] ^{(*)1} - [Control Panel] - [Network and Internet] - [Network and Sharing Center] - [Manage network connections] ^{(*)2} - [Local Area Connection] ^{(*)3}.

*1) For Windows 7/Server 2008 R2

Displays as a Windows logo in the bottom left of the screen.

For Windows 8/8.1/Server 2012/Server 2012 R2

1) Press the Windows logo key + X key, shortcut menu is displayed bottom left of the screen.

2) Click [Control Panel].

For Windows 10/Server 2016 and later

1) Select the “All Programs”, and then select Windows System or Windows Tools.

2) Click [Control Panel].

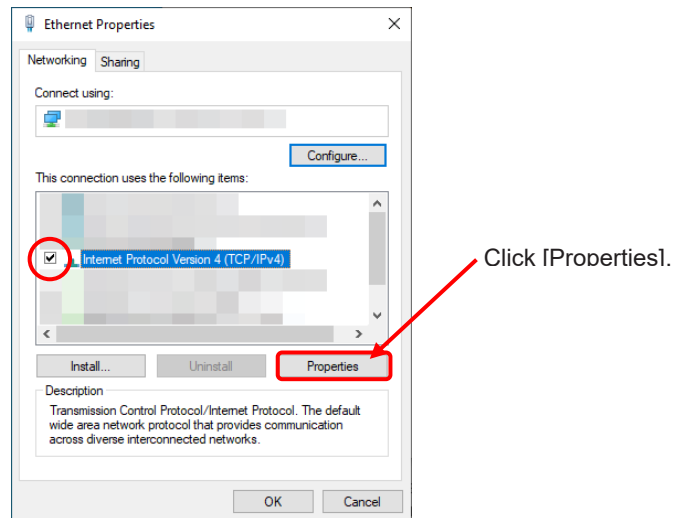
*2) On Windows 7 and later, [Change adapter settings].

*3) On Windows 8 and later, [Ethernet].

(2) Open the [Local Area Connection] properties.

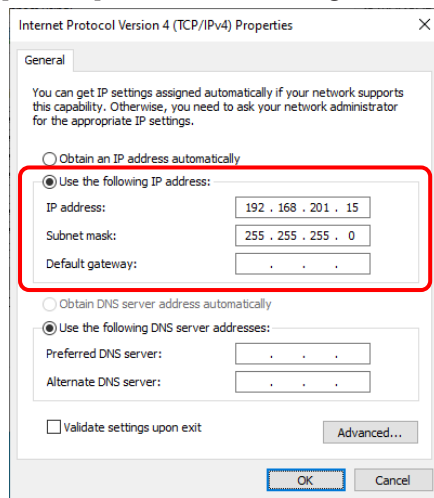
If the [User Account Control] screen appears, select [Continue] or [Yes].

(3) Check that the [Internet Protocol Version 4 (TCP/IPv4)] has been added.



*1) If [Internet Protocol Version 4 (TCP/IPv4)] is not in the list, click [Install] and select [Select Network Component Type] - [Protocol] - [Internet Protocol Version 4 (TCP/IPv4)] to add it.

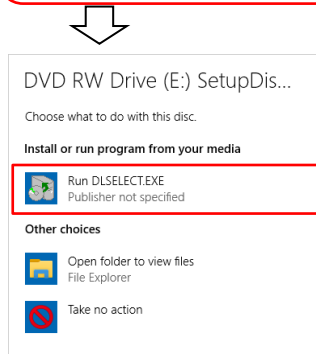
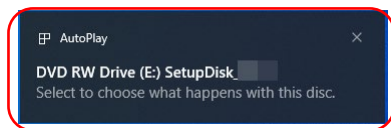
(4) In [General], check that the settings have been configured to match your network environment.



CHAPTER 3 CONFIGURATION USING THE LAN SETTING TOOL

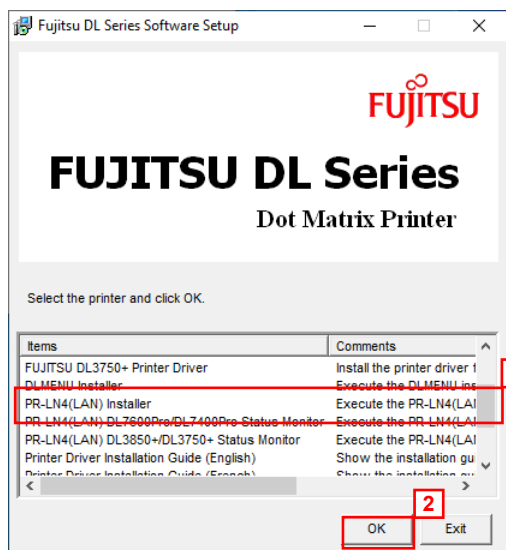
3.1 INSTALLATION

In this section, Windows 10 is used as an example of how to install the "LAN Settings Tool" on a PC. If the [User Account Control] dialog box is displayed, click [Allow] or [Yes].



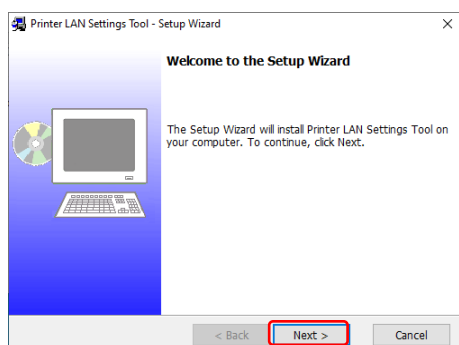
1. Log on as an administrator of the computer.
2. Insert the Setup Disk into your PC's CD-ROM or DVD drive.
The Auto Play window will be displayed.
Click the Toast Notification, and click [Run DLSELECT.EXE]

If the Auto Play window is not displayed, use Explorer or another application to open CD-ROM.
And double click the DLSELECT.EXE file.

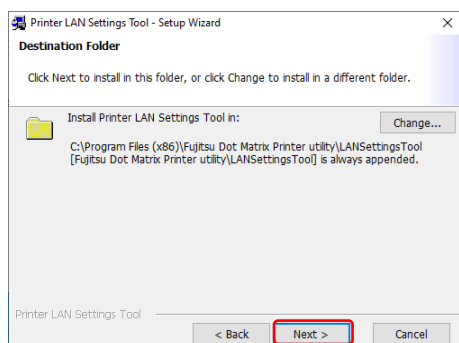


3. The FUJITSU DL Series Software Setup window is displayed.
From the printer driver list, select **PR-LN4(LAN) Installer** and click the [OK] button.

*1) If the menu screen does not appear, run "DLSELECT.EXE " on this CD.

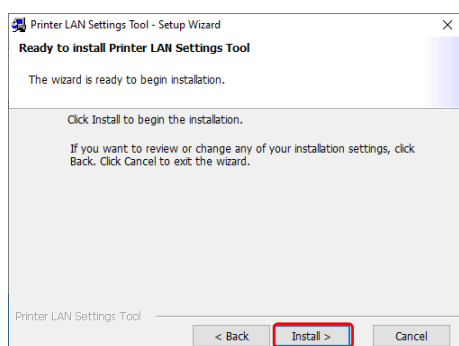


4. The Printer LAN Settings Tool window is displayed.
Click [Next].

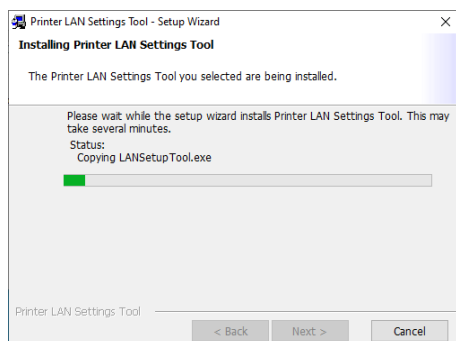


5. Specify the installation folder.
Click [Next].

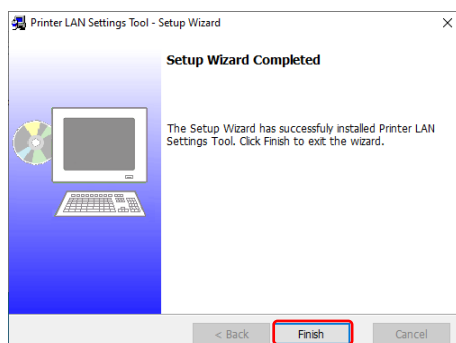
*1) Click Change to select the installation folder.



5. Start installation.
Click [Install].



6. A screen appears indicating that the installation is in progress. Please wait for the installation to complete.

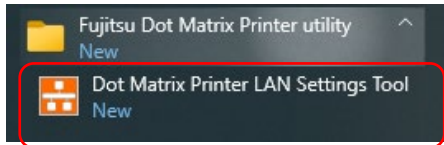


7. This window is displayed after the "LAN Settings Tool" installation completes. Follow the on-screen instructions and click [Finish].

3.2 OPERATING PROCEDURE

3.2.1 STARTING

Start the LAN Settings Tool once the installation is complete. The following describes how to start the tool.
If the [User Account Control] dialog box is displayed, click [Allow] or [Yes].



1. Click the PR-LN4 setting tool.

For Windows 10, Server 2016 and later :

Click [Fujitsu Dot Matrix Printer Utility]
-> [Dot Matrix Printer LAN Settings Tool]
from All apps ^(*) in the Windows Start menu.

For Windows 8 and later :

Click the [Dot Matrix Printer LAN Settings Tool] tile in the Apps view ^(*).

For Windows 7 and earlier:

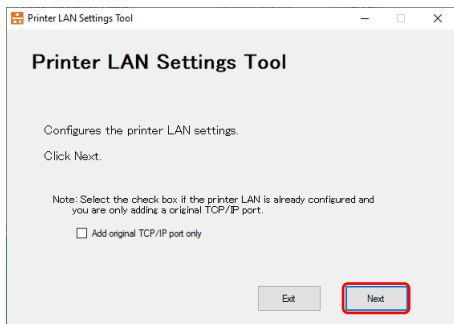
Click [Fujitsu Dot Matrix Printer Utility]
-> [LANSettingsTool]
-> [Dot Matrix Printer LAN Settings Tool]
from All Programs ^(*) in the Windows Start menu.

*1) Refer to [All Programs] in "1.5 HOW TO USE THIS MANUAL" for details on how to display this screen in each operating system.

*2) In the case of Windows 8, software can be started from the start screen.

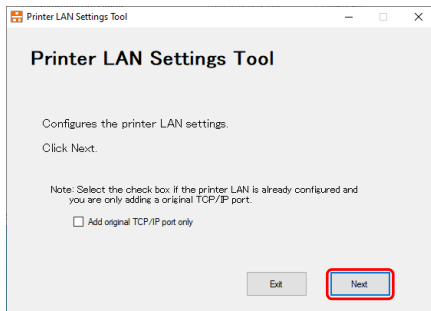
2. The main screen of the tool is displayed.

*1) Refer to "3.2.2 PR-LN4 SETTINGS" and "3.2.3 ADDING AN ORIGINAL TCP/IP PORT " for details on how to perform each of the operations.



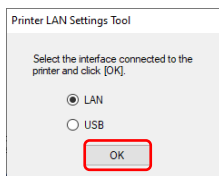
3.2.2 PR-LN4 SETTINGS

This section describes how to configure the simple IP address in the PR-LN4 by using this tool.

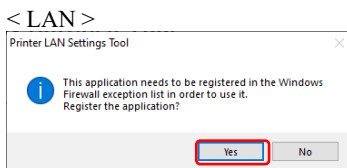


1. Configure the PR-LN4 settings.
Click [Next].

*1) If you are only adding an Original TCP/IP port, select the [Add Original TCP/IP port only] check box and then click [Next]. Refer to section 3.2.3.

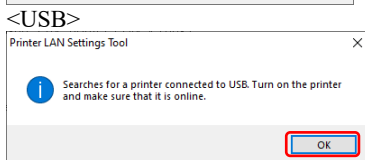


2. Select the interface that is connected and click [OK].



3. When this screen is displayed.
For the LAN, click [Yes]
For the USB, click [OK]

*1) For the USB connection, make sure that the printer is ONLINE.



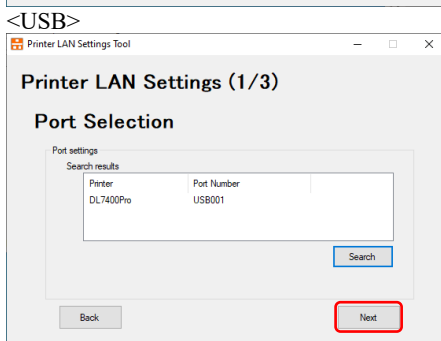
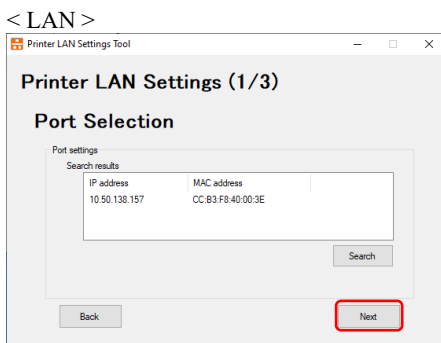
4. Select the printer to configure from among the search result and click [Next].

*1) If a list of search results is not displayed, click [Search].

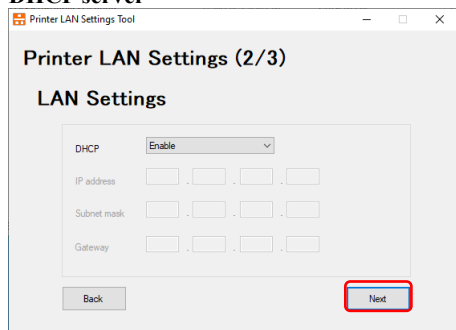
*2) For the LAN, check the labels displayed on the printer for the MAC address.

*3) For the LAN, if you search printer set as "Enable" of DHCP under network environments which do not have DHCP server, the printer's IP address displays "0.0.0.0".

*4) For the USB, the printer firmware must support LAN settings. If the firmware is not supported, make settings via LAN connection.



To acquire the IP address automatically from a DHCP server



Printer LAN Settings Tool

Printer LAN Settings (2/3)

LAN Settings

DHCP: Enable

IP address: . . .

Subnet mask: . . .

Gateway: . . .

Back Next

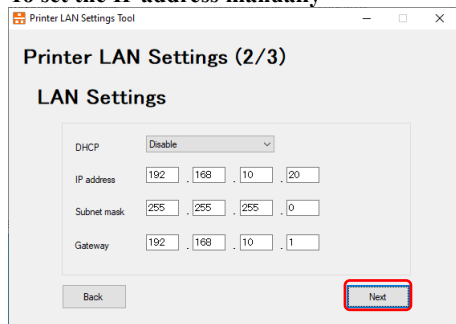
5. Configure the IP address.

To acquire the IP address automatically from a DHCP server
-> Set DHCP to "Enable".

To set the IP address manually
-> Set DHCP to "Disable", and set the "IP address", "Subnet mask", and "Gateway" as needed.

After configuring the settings, click [Next].

To set the IP address manually



Printer LAN Settings Tool

Printer LAN Settings (2/3)

LAN Settings

DHCP: Disable

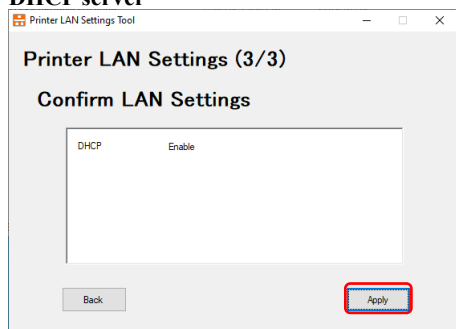
IP address: 192 . 168 . 10 . 20

Subnet mask: 255 . 255 . 255 . 0

Gateway: 192 . 168 . 10 . 1

Back Next

To acquire the IP address automatically from a DHCP server



Printer LAN Settings Tool

Printer LAN Settings (3/3)

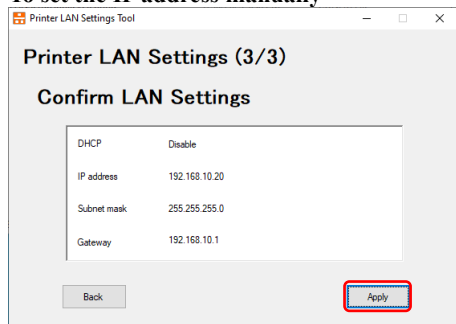
Confirm LAN Settings

DHCP: Enable

Back Apply

6. Confirm the settings and click [Apply].

To set the IP address manually



Printer LAN Settings Tool

Printer LAN Settings (3/3)

Confirm LAN Settings

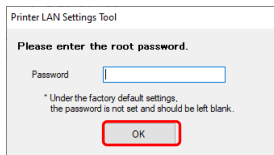
DHCP: Disable

IP address: 192.168.10.20

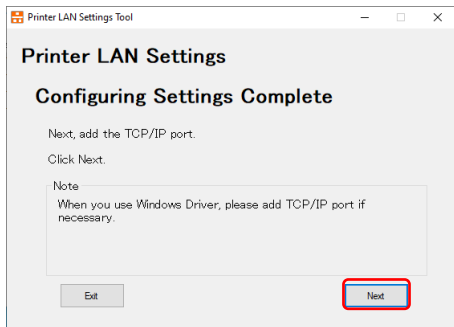
Subnet mask: 255.255.255.0

Gateway: 192.168.10.1

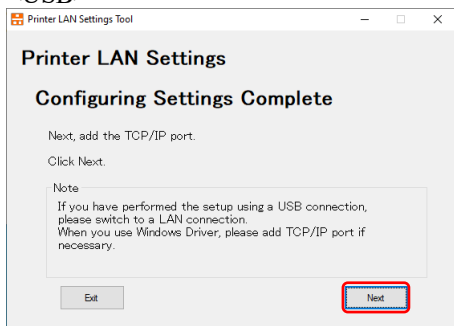
Back Apply



<LAN>



<USB>



7. For the LAN, enter the "root password" set in the printer server and click [OK].

*1) Under the factory default settings, the password is not set and you should leave it blank.

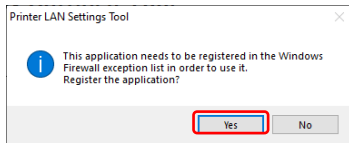
8. This completes the settings.
To also create an "Original TCP/IP Port", click [Next].

*1) If the USB connection is used, switch to LAN connection before click [Next].

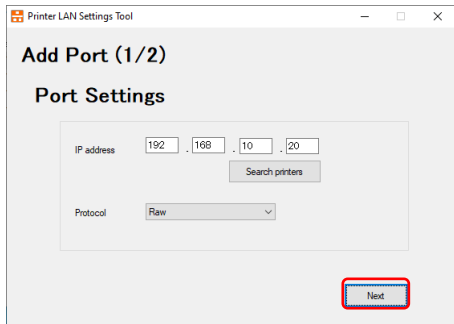
*2) If you want to change any other detailed settings, you can change them by using a web browser.
For details, refer to "5. CONFIGURATION USING A WEB BROWSER".

3.2.3 ADDING AN ORIGINAL TCP/IP PORT

This section describes how use this tool to add the "Original TCP/IP Port" needed when using the Windows driver with the LAN interface.

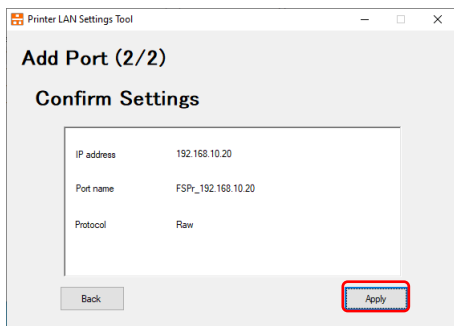


1. When this screen is displayed, click [Yes].

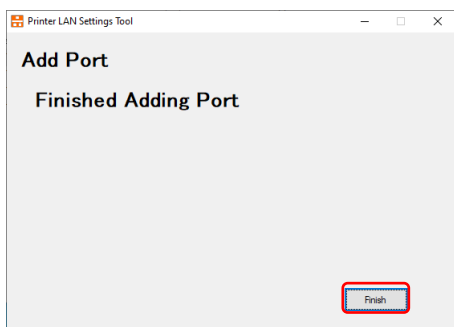


2. Set the IP address, port name, and protocol. Click [Next].

*1) You can also specify the IP address by searching for the printer using [Search printers].



3. Confirm the settings and click [Apply].



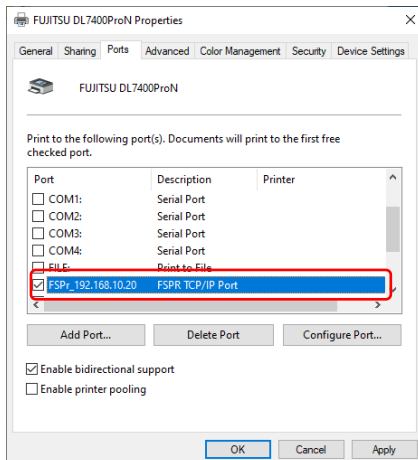
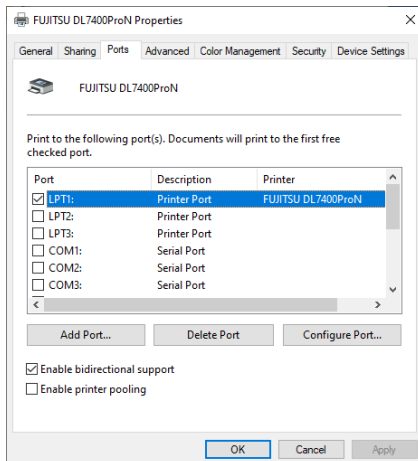
4. This completes adding the port.

*1) In case you add port with this tool, Windows driver's port change is necessary. Please change the port, according to "3.2.4 CHANGE OF PORT".

3.2.4 CHANGE OF PORT

Here we explain procedures for changing port to be printed.

1. Open the [Printer Folder].
2. Open the "FUJITSU DL7400ProN " properties.
3. Click the [Ports] tab.
4. The following property screen is displayed.



5. Select the Port created.
6. Click [Apply]

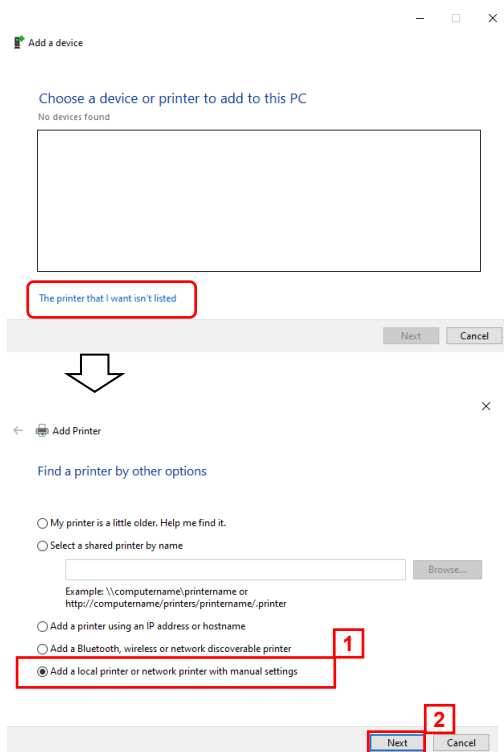
CHAPTER 4 PRINTING USING THE REGULAR OPERATING SYSTEM PRINT CLIENT

This section describes how to print using the regular operating system print client function.

- *1) Install the printer driver in advance on the computer you are using.
- *2) Printing by IPP port with operating system standard is not supported.

4.1 ON WINDOWS 7 AND LATER

Since the following description is given using the screens from Windows 10, the screens may differ if you are using other Windows operating system.



1. Open [Add a printer].
Then, select "The printer that I want isn't listed" and select [Add a local printer or network printer with manual settings] check box.

- *1) Refer to [Add a printer] in "1.5 HOW TO USE THIS MANUAL" for details on how to display this screen in each operating system.
- *2) If you are using Windows 7 / Server 2008 R2, after click [Add a printer], select the [Add a local printer].

← Add Printer

Choose a printer port

A printer port is a type of connection that allows your computer to exchange information with a printer.

☐ Use an existing port: LPT1: (Printer Port)

☒ Create a new port:
Type of port: Standard TCP/IP Port

Next Cancel

2. Select the [Create a new port] option, and select [Standard TCP/IP Port] as the type. Click [Next].

← Add Printer

Type a printer hostname or IP address

Device type: TCP/IP Device

Hostname or IP address: 192.168.10.20

Port name: 192.168.10.20

☒ Query the printer and automatically select the driver to use

Autodetect detects WSD and TCP/IP printers.
To search for IPP printers, please select IPP from the drop down box

Next Cancel

3. Enter the IP address configured in the PR-LN4 in [Hostname or IP address].
If you are using the standard value for the port name, [IP_] is not added.
Set [Device type] to [AutoDetect], and clear the [Query the printer and automatically select the driver to use] check box. Click [Next].

← Add Printer

Additional port information required

The device is not found on the network. Be sure that:

1. The device is turned on.
2. The network is connected.
3. The device is properly configured.
4. The address on the previous page is correct.

If you think the address is not correct, click Back to return to the previous page. Then correct the address and perform another search on the network. If you are sure the address is correct, select the device type below.

Device Type

☐ Standard Generic Network Card

☒ Custom Settings...

Next Cancel

4. Select the [Custom] option and click [Settings].

Configure Standard TCP/IP Port Monitor

Port Settings

Port Name: 192.168.10.20

Printer Name or IP Address: 192.168.10.20

Protocol: Raw LPR

Raw Settings

Port Number: 9100

LPR Settings

Queue Name: lp

☒ LPR Byte Counting Enabled

☐ SNMP Status Enabled

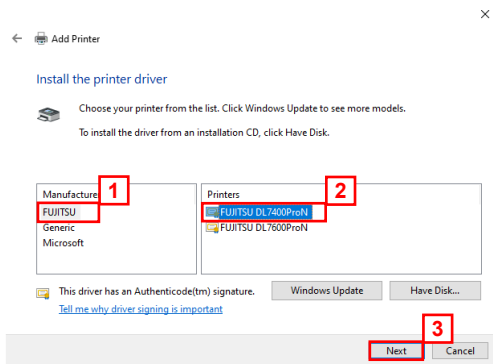
Community Name: public

SNMP Device Index: 1

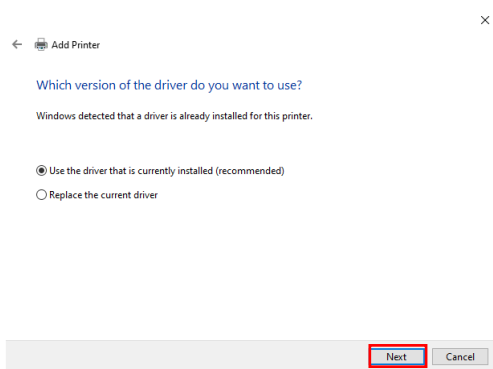
OK Cancel

5. Select the [LPR] option.
Enter [lp] in the Queue Name, and select the [LPR Byte Counting Enabled] check box. Click [OK].

*1) Click [OK] to return to the screen from Step 4, and then click [Next].

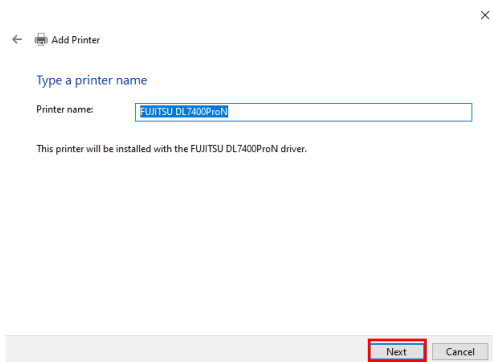


6. Select the driver for the printer you are using. Click [Next].



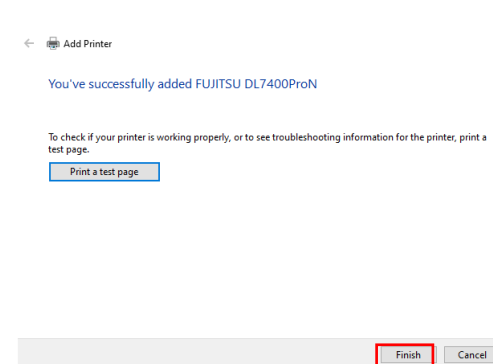
7. Select from [Use the driver that is currently installed] and [Replace the current driver]. Click [Next].

*1) If you have installed the latest driver separately, select [Replace the current driver].



8. Registers the printer name. Click [Next].

*1) After click Next, if the printer shared screen is displayed, please share settings as needed. Then, please click on the [Next]. If you will also be using this printer from other computers in the same network, select [Share].



9. If necessary, please print the test page and to set the default printer. Then please click on the [Finish].

10. Setting is complete.

CHAPTER 5 CONFIGURING USING A WEB BROWSER

This section describes how to configure detailed settings using a web browser.

Since the PR-LN4 is equipped with the HTTP protocol, you can configure detailed settings and change settings by using a web browser.

Furthermore, this can also be used to restart the PR-LN4 remotely.

*1) In order to use a web browser, the TCP/IP protocol settings need to be enabled and the IP address needs to be configured in the PR-LN4.

Microsoft Edge is recommended for the web browser.

Furthermore, the display may vary slightly depending on the web browser you are using.

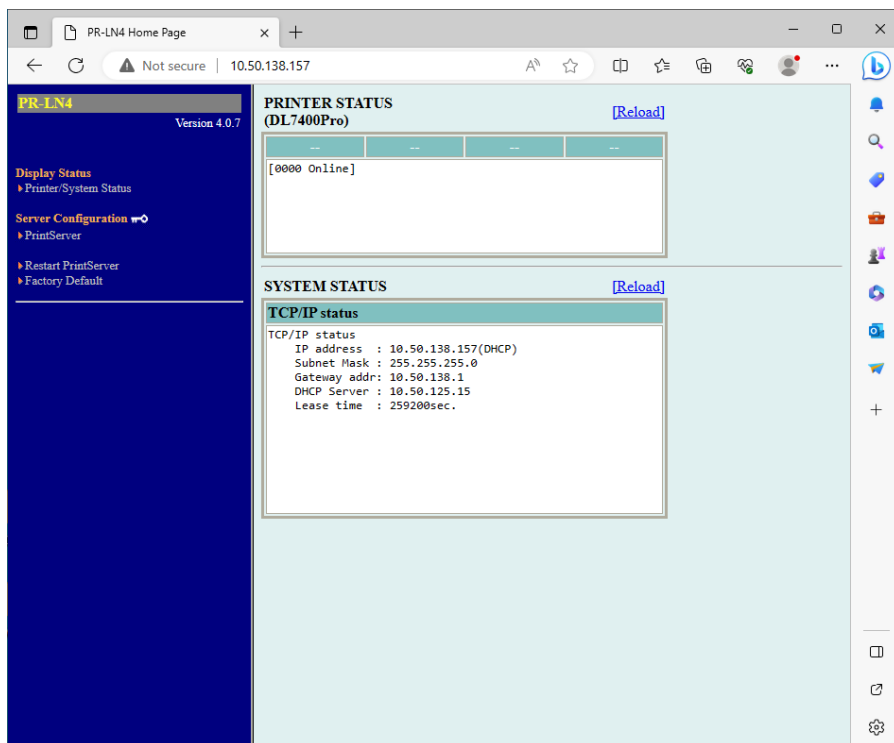
If you change any settings using a web browser, always execute [Restart PrintServer].

5.1 DISPLAYING THE PR-LN4 WEB PAGE

The PR-LN4 web page for configuring settings is displayed as follows.

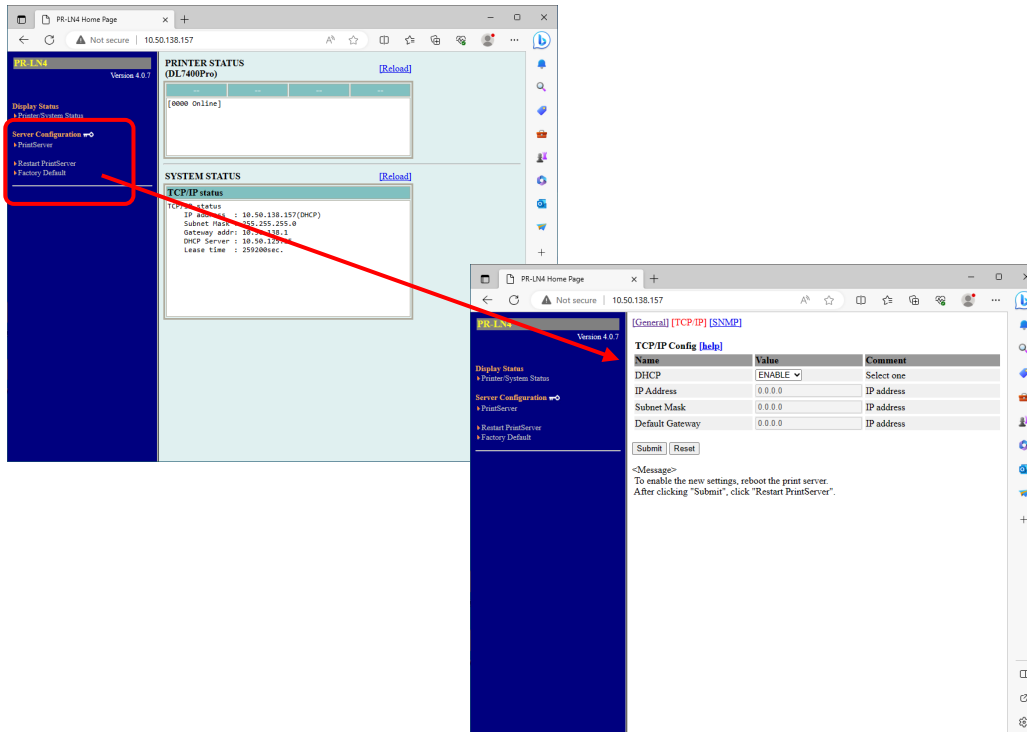
Enter the IP address configured in the PR-LN4.

Example: `http://10.50.138.157`



5.2 CONFIGURATION SETTINGS FROM THE PR-LN4 WEB PAGE

Click the item that you want to configure from the setting items displayed in the web browser to display the settings web page. Enter the setting values for the required items.



5.3 PR-LN4 WEB PAGE MENU STRUCTURE

Click the item that you want to configure from the setting items displayed in the web browser to display the settings web page. Enter the setting values for the required items.

Display Status	Printer/System Status	Displays the printer/system status Displaying the printer state and PR-LN4 setting information
	PrintServer	Configures the settings
	Restart PrintServer	Restarts the PR-LN4
	Factory default	Restores the factory default settings

- *1) If the screen for entering the user name is displayed when navigating to an item to change the setting, enter "root".
- *2) If you have updated settings using [Submit] for the updated settings, perform [Restart PrintServer] for the updated settings to restart the PR-LN4.
- *3) Initialization
Click [Factory default] to restore the device to the factory default settings.
After executing the initialization, perform [Restart PrintServer] to restart the PR-LN4.

5.4 PRINT SERVER FUNCTIONS

[General]

Configures general network settings.

Item		Settings details	Factory default Setting
General	Change root Password	Sets the password for managing the PR-LN4 using an ASCII string (7 characters or less). This password is used as the authentication password when configuring settings on the web.	None
	Printer Name	Sets the printer name. (Maximum 31 single-byte characters)	None

[TCP/IP]

Configures settings such as the IP address for using the TCP/IP protocol.

Item		Settings details	Factory default Setting
TCP/IP	DHCP	Sets the DHCP protocol to enabled (ENABLE) or disabled (DISABLE). (*1)	ENABLE
	IP Address	Sets the IP address of the PR-LN4 using the decimal format "xxx.xxx.xxx.xxx".	192.168.1.1
	Subnet Mask	Sets the subnet mask of the PR-LN4 using the decimal format "xxx.xxx.xxx.xxx". "0.0.0.0" is invalid, and automatically uses the subnet mask corresponding to the IP address.	255.255.255.0
	Default Gateway	Sets the default gateway of the PR-LN4 using the decimal format "xxx.xxx.xxx.xxx". "0.0.0.0" is invalid.	0.0.0.0
	IPv6 Function	Sets the IPv6 Function to enabled (ENABLE) or disabled (DISABLE).	DISABLE

*1) When DHCP disabled, IP Address is 192.168.192.168.

[SNMP]

Make the LAN card configuration settings to enable management via the network.

Item		Settings details	Factory default Setting
SNMP	Authentic Community	Specify the authentication community name of SNMP. This community name will be authenticated when receiving an SNMP Set Request. (Use up to 15 characters.)	public
	Trap Community	Specify the trap community name of SNMP. The LAN card will use this community name when issuing a trap. (Use up to 15 characters.)	public
	Trap Address(IP)	Specify the IP Address of the SNMP trap destination using the decimal format of xxx.xxx.xxx.xxx.xxx. The specification of 0.0.0.0 invalidates any SNMP trap destination address and disable the LAN card from issuing traps.	0.0.0.0
	SysContact	Specify the SysContact parameter, which is usually the administrator's mail address. (Use up to 255 characters.)	None
	SysName	Specify the SysName parameter, which is usually the host name or domain name of the LAN card. (Use up to 255 characters.)	None
	SysLocation	Specify the SysLocation parameter, which is usually the location of the LAN card. (Use up to 255 characters.)	None
	EnableAuthenTrap	Specify whether to ENABLE(1) or DISABLE(2) EnableAuthenTrap. Setting this parameter to ENABLE causes an SNMP trap to be issuing to the IP address (specified as the trap destination address) at the occurrence of an SNMP community violation.	2

CHAPTER 6 TROUBLESHOOTING

This section describes problems that may arise when installing the PR-LN4 and how to resolve these problems.
Notation used in the text

[Check]: The first things to check if the problem occurs.

[Solution]: The specific method for resolving the problem.

6.1 PROBLEMS DURING INSTALLATION

(1) Configuring the IP address gives a communication error.

[Check 1]

Check that the L/A LED on the PR-LN4 is correctly lit up.

- Is the printer turned on?
- Check that the network cable is connected correctly.
- Check that the port on the Ethernet hub is not faulty.

[Check 2]

Check that an IP address is assigned to the computer where the settings tool is running.

- In order to check whether communication can be established between the computer you are using and other computers on the network, execute the ping command from the MS-DOS prompt.

*1) For details on how to use the ping command, refer to [Check 1] in "Problems in the Windows TCP/IP Environment".

[Check 3]

Check whether the PR-LN4 has been initialized.

- For details on how to restore the PR-LN4 to the factory default settings, refer to "5.3 PR-LN4 WEB PAGE MENU STRUCTURE " - "Factory default" in "5 CONFIGURING USING A WEB BROWSER".

[Check 4]

The PR-LN4 may be configured with an invalid IP address.

- Check that the router and server are not configured with an invalid IP address.
- For a PR-LN4 configured with an invalid IP address, create a network that does not have any routers or servers (a local network consisting of 1 computer, 1 hub, and the PR-LN4 connected to 1 printer), configure the computer to have an IP address within the same segment as the PR-LN4, then run the tool to change to [Specify an IP address] in the TCP/IP settings and configure a correct IP address. After this, restore the original network.

*2) If you have any routers or servers configured with an invalid IP address and the TCP/IP setting in the PR-LN4 is set to [Automatically acquire an IP address], the PR-LN4 will automatically be set to an invalid IP address, and you will not be able to change or initialize the IP address.

[Check 5]

The PR-LN4 might not be in the same segment as the computer for configuring the settings.

- Check that the computer for configuring the settings is in the same segment as the PR-LN4.

[Check 6]

Has the printer that the PR-LN4 is attached to been moved to another network?

The printer may have been moved from a network that has DHCP on the network to another network that does not have DHCP on the network without performing the operation to restore factory defaults.

- Connect from the network before the move and perform the operation to restore factory defaults from the web page.

*1) When you are connecting the printer where the PR-LN4 is attached to another network, always perform the operation to restore factory defaults.

6.2 PROBLEMS DURING PRINTING

(1) Unable to print

[Check 1]

Check the following details, and then perform the setup procedure again.

- Is the printer turned on?
- Is the L/A LED alight on the PR-LN4 and connected Ethernet hub?
- Is the network cable connected correctly.
- Is the network cable broken?
- Is the port on the Ethernet hub faulty?

(2) I want to cancel printing

[Solution]

To perform reprinting correctly, cancel printing using the following procedure.

- Open the printer used for printing from the printers folder.
- Delete currently printing documents from the spooler.
- Turn the printer off and then on.

(3) The printer that I want to print to stays idle and the printing goes to another printer

[Check 1]

- Has the printer you want to print to been configured with the same IP address as another printer?
- Check the IP address settings, and configure the settings again.

(4) Printing stops in process

[Check 1]

- Has the printer that is printing been configured with the same IP address as another printer?

[Check 2]

- Are you sending a large amount of print data?
- If you send a large amount of print data, the printing may stop temporarily. Once some period of time has passed, printing will resume. Please wait.

6.3 PROBLEMS IN THE WINDOWS TCP/IP ENVIRONMENT

(1) Unable to print

[Check 1]

If you are using the TCP/IP protocol, use the ping command to check whether there is a response from the IP address allocated to the PR-LN4.

If there is no response to the ping command, the IP address might not be configured correctly.

Initialize the PR-LN4 to restore the factory default settings. Next, configure the IP address again.

Example: If ping is executed in Command Prompt in Windows 10

When ping xxx.xxx.xxx.xxx is executed using  (Windows Logo) - [Windows System] - [Command Prompt] (Execute with "Administrator"), the following is displayed.

xxx.xxx.xxx.xxx is the IP address of the PR-LN4.

(If there is a response to ping)

Reply from xxx.xxx.xxx.xxx:bytes=32 time<1ms TTL=255

Reply from xxx.xxx.xxx.xxx:bytes=32 time<1ms TTL=255

Reply from xxx.xxx.xxx.xxx:bytes=32 time<1ms TTL=255

Reply from xxx.xxx.xxx.xxx:bytes=32 time<1ms TTL=255

(If there is no response to ping)

Request timed out.

Request timed out.

Request timed out.

Request timed out.

*1) For details on how to restore the PR-LN4 to the factory default settings, refer to "5.3 PR-LN4 WEB PAGE MENU STRUCTURE" - "Factory default" in "5 CONFIGURING USING A WEB BROWSER".

[Check 2]

The printing destination port of the printer driver you are using might not have been configured.

Check the [Ports] in the [Printer properties].

[Solution 1]

If the computer you are using and the PR-LN4 are not in the same segment, the subnet mask and gateway address settings need to be configured in the PR-LN4.

Check that the subnet mask and gateway address are configured correctly in the PR-LN4 web page.

[Solution 2]

If there is a DHCP server on the network, then since the IP address is allocated automatically, the IP address configured in the PR-LN4 may be overwritten by each of the servers.

Please set the DHCP as "Disable", and set IP address again.

(2) An error occurs during printing

[Check]

If you perform printing while another person is doing a large amount of printing or is printing large size data, you cannot print until the other person has finished printing.

If you have waited for a long time, a timeout error may have occurred.

If this happens, perform the printing again.

If the LAN cable is disconnected during printing and the following message is displayed, reconnect the LAN cable and turn the printer off and then on again.

CHAPTER 7 USAGE WARNINGS

This section describes the warnings to take note of when using the printer in a LAN Environment.

- (1) When printing to multiple printers from a single PC, the printing might not operate correctly depending on the Windows standard TCP/IP port.
If this happens, open the printer properties, clear the "Enable bidirectional support" checkbox in the "Ports" tab, and then click [OK] or [Apply].
- (2) When you use the PR-LN4, do not "Print directly to the printer" is to not select.

