

PR-LN4 SETUP GUIDE

PR-LN4 SETUP GUIDE

1

Getting started

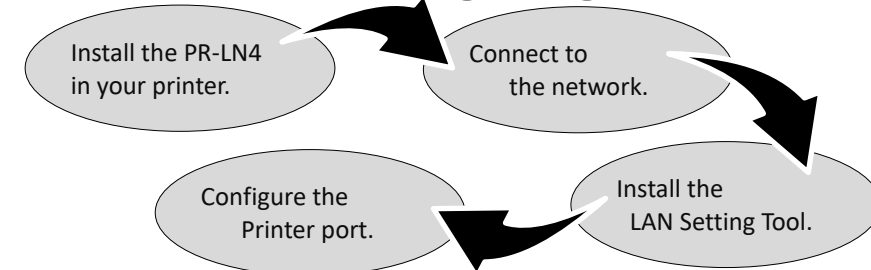
- Thank you for purchasing Fujitsu's printer LAN card PR-LN4.
- Installing this LAN card in your printer allows you to print in a network environment.
- This setup guide explains the steps for configuring the PR-LN4 in a Windows environment.
- For further information about the configuration method, refer to the online manual included in the CD-ROM supplied with this product.
- Please note: When you install the LAN card, you will need to remove screws and the option interface cover. Keep these items on hand.
- This setup guide applies only to computers running Windows.

CAUTION

- INJURY
- Before starting installation, be sure to turn off the power switch and disconnect the power plug from the outlet.
- Otherwise, you may receive an electric shock.

2

Procedure for configuring the LAN card



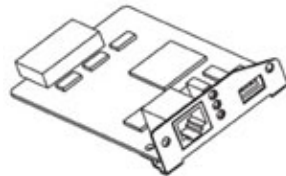
3

Checking the package contents and the items that you will need to prepare

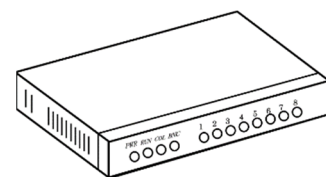
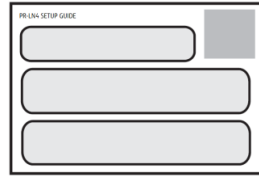
- Before installing the LAN card, verify that the package contains the items below. If some item is faulty or missing, contact the store or dealer where you purchased this product.

- Obtain the following.

PR-LN4



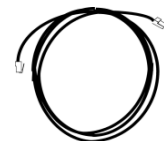
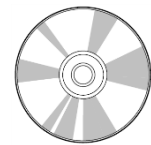
Setup Guide (this Document)



Ethernet hub

User Software CD-ROM

(containing the configuration tools and manual)

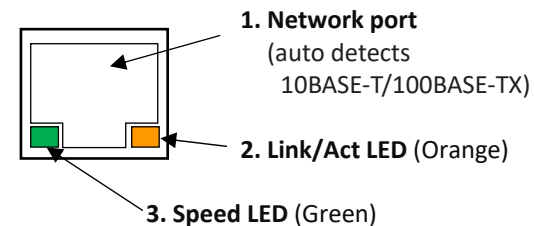


Network cable

** Use a Category 5 or higher network cable if you are using the PR-LN4 in a 100BASE-TX environment.

4

Components on the panel



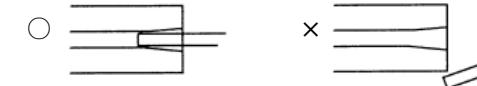
- 1. Network port**
Connects to the network cable.
(Category 5 or higher for a 100BASE-TX network)
- 2. Link/Act LED (Orange)**
Turns on when a link is established as 100BASE-TX or 10BASE-T. Blink when receiving a packet.
- 3. Speed LED (Green)**
Turns on when the connection is detected as 100BASE-TX.
Turns off when not connected or when the connection is detected as 10BASE-T.

5

Installing the PR-LN4

For DL7400Pro/DL7600Pro

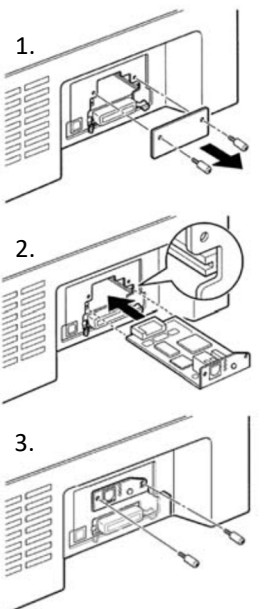
1. Turn off the power to the printer, disconnect the power cord, and remove the option interface cover from the printer.
2. Verify that the LAN card can be inserted into the guides. Then install the LAN card by inserting it into the guides and sliding it in until it stops.



3. Confirm that the power to the printer is off, and then insert the power card.

CAUTION

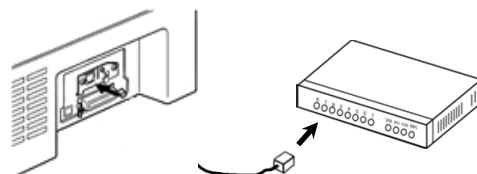
1. If this product is to be connected to another printer, be sure to reset PR-LN4 setting tool to the factory default settings before starting the connection work.
2. **Burn:** Be sure not to touch the printer board during operation or after turning it off because a part of the printer board may be very hot. Touching the board under such circumstances may lead to injury or may even damage the board itself.



6

Connecting to the network

1. Verify that the power to the printer is off.
2. Connect the network cable to the network port (10BASE-T or 100BASE-TX) on the PR-LN4.
3. Connect the other end of the network cable to the Ethernet hub.
4. Turn on the power to the printer and verify that the Link/Act LED on the LAN card goes on.



7

Starting User Software

1. Insert the attached CD-ROM into the CD drive of your computer running Windows.
2. The main menu starts automatically.
Double click "PR-LN4 Installer" or select a "PR-LN4(LAN) Installer" and OK Button.

- The explanation that follows assumes the following environment:
 - A DHCP server is included.
 - A printer driver is already installed on your PC.
- In the case of Windows 8/Server 2012 and later, please start on a desktop screen.
- If you need to make detailed configuration settings or to change the existing configuration, refer to PR-LN4 Software Guide.



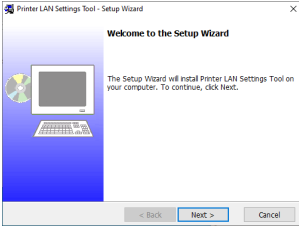
- * If the [User Account Control] dialog box is displayed, click [Allow] or [Yes].
- * The Auto Play window will be displayed, click Run DLSELECT.EXE.
- * The displayed screens may vary with the environment in which you configure the PR-LN4.
- * If the main menu does not start automatically, directly run DLSELECT.EXE on the CD-ROM drive (the D drive if the CD-ROM drive letter is D).

8

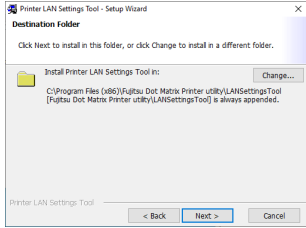
Installing Printer LAN Setting Tool

*If the [User Account Control] dialog box is displayed, click [Allow] or [Yes].

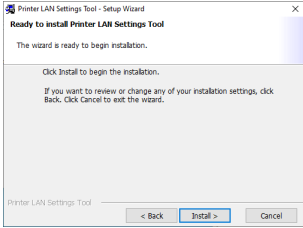
1. The Printer LAN Settings Tool window is displayed. Click [Next].



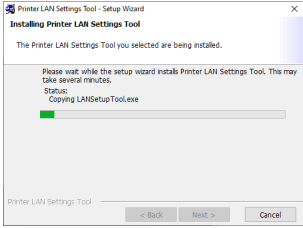
2. Specify the installation folder. Click [Next].
* Click Change to select the installation folder.



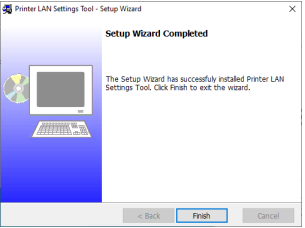
3. Start installation. Click [Install].



4. A screen appears indicating that the installation is in progress.
Please wait for the installation to complete.



5. This window is displayed after the "LAN Settings Tool" installation completes.
Follow the on-screen instructions and click [Finish].



9

PR-LN4 Settings

*If the [User Account Control] dialog box is displayed, click [Allow] or [Yes].

1. Click the PR-LN4 setting tool. (*1)
For Windows 10 and later:
Click [Fujitsu Dot Matrix Printer Utility]
-> [Dot Matrix Printer LAN Settings Tool]
from All apps in the Windows Start menu.

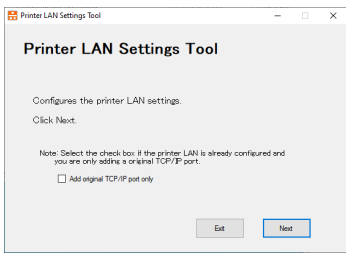


For Windows 8 and later :
Click the [Dot Matrix Printer LAN Settings Tool] tile in the Apps view.

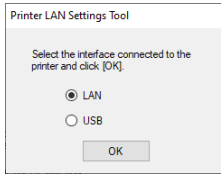
For Windows 7 and earlier:
Click [Fujitsu Dot Matrix Printer Utility]
-> [Printer LAN Tool] -> [Dot Matrix Printer LAN Settings Tool]
from All Programs in the Windows Start menu.

*1) Refer to PR-LN4 Software Guide.

2. The main screen of the tool is displayed. Click [Next].

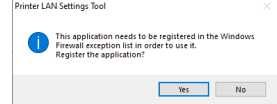


3. Select the interface that is connected and click [OK].



4. When this screen is displayed.

LAN: click [Yes].

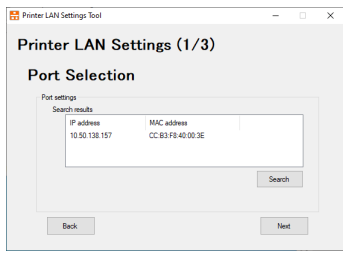


USB: click [OK].



- *1) For the USB connection, make sure that the printer is ONLINE.
*2) For the USB, the printer firmware must support LAN settings. If the firmware is not supported, make settings via LAN connection.

5. Select the printer to configure from among the search result and click [Next].

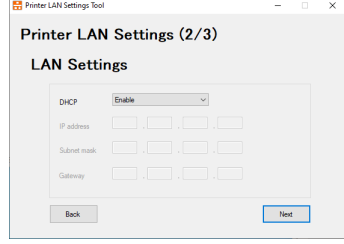


e.g.) LAN Search display

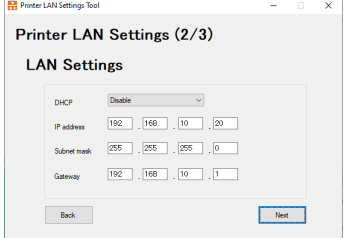
- *1) If a list of search results is not displayed, click [Search].
*2) Check the labels displayed on the printer for the MAC address.
*3) If you search printer set as "Enable" of DHCP under network environments which do not have DHCP server, the printer's IP address displays "0.0.0.0".

6. Configure the IP address.
After configuring the settings, click [Next].

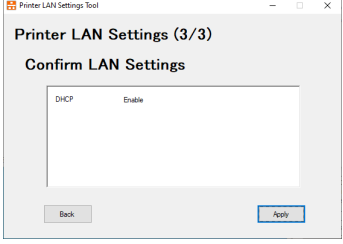
DHCP Enable: To acquire the IP address automatically from a DHCP server



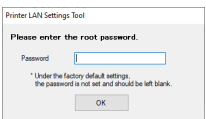
DHCP Disable: To set the IP address manually



7. Confirm the settings and click [Apply].



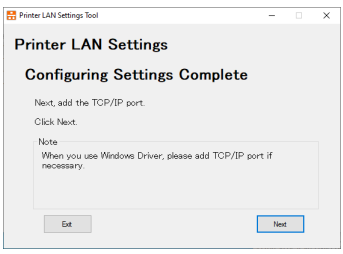
8. Enter the "root password" set in the printer server and click [OK].



*1) Under the factory default settings, the password is not set and you should leave it blank.

*2) For the USB, this dialog is not displayed.

9. This completes the settings.
To also create a "Original TCP/IP Port", click [Next].



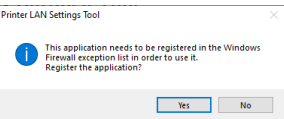
*1) If the USB connection is used, switch to LAN connection before click [Next].

10

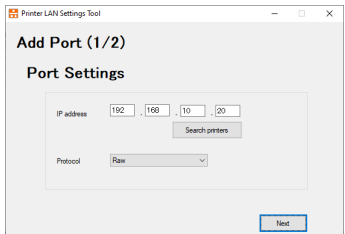
Adding an original TCP/IP port

*If the [User Account Control] dialog box is displayed, click [Allow] or [Yes].

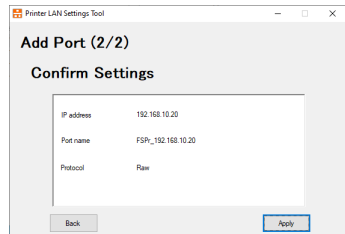
1. When this screen is displayed, click [Yes].



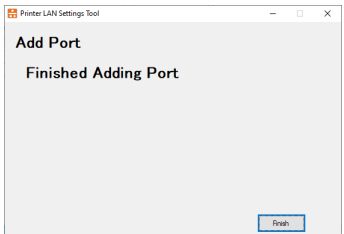
2. Set the IP address, port name, and protocol.
Click [Next].
*1) You can also specify the IP address by searching for the printer using [Search printers].



3. Confirm the settings and click [Apply].



4. This completes adding the port, click [Finish].



- This document describes the installation and usage of the PR-LN4 when it is used on FUJITSU DL7600Pro/DL7400Pro printer.
PR-LN4 is Windows-specific software to display the status of the printer.

- The location and name of the documents in the CD-ROM are as follows.
- PR-LN4 Software Guide
\\Documents\PR-LN4 Software Guide\PR-LN4_SoftwareGuide.pdf

- The ".NET Framework 3.5 SP1" or higher is required in order to use this tool.
If it is not installed, obtain and install the ".NET Framework 3.5 SP1" from the Microsoft website.

- Administrator privileges are required in order to run this tool.
Log into the Administrators account to run.