

# FUJITSU Software

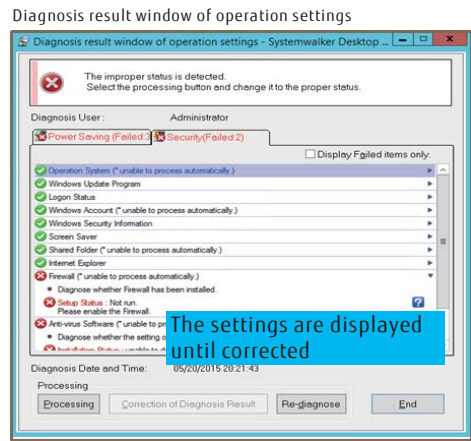
## Systemwalker Desktop Patrol V15

### Manage PC Assets, and Understand and Address Security Risks

Maintain PC security and manage hardware/software with ease.  
Smart device (Android, iOS) assets can also be managed.

**Maintaining security of PCs**  
**Auditing and automatic application of security patches ensures security**  
Simple operations can be used to check PCs with security issues for which the latest security patches and virus patterns have not been applied.  
The acquisition, distribution, and application of security patches, as well as the list of their application status can be automated for PCs company-wide. Software not required for business purposes (games, file transfer software, etc.) and software prohibited for use can be detected automatically and prevented from being executed, and the administrator can be notified.

**Auditing and control of power saving and security settings**  
**Security setting information can be audited**  
You can understand the actual state by checking if the security level meets a set standard, such as checking if the BIOS password, screensaver password and automatic logon settings have been configured. A message is sent to users of PCs that have issues with the security settings, and when the issues are addressed, the administrator is automatically notified through e-mail.



**Understand security settings of smart devices**  
The lock setting when devices are not in use and the unlock setting can be collected to check the security settings of each smart device.

**Cost reductions through power savings and understanding the status**  
When the operating rules of power saving are violated, the setting contents are automatically recognized, and a power saving setting warning is displayed on the screen of the violating PC to prompt the user to make improvements.

**ICT control is achieved using reliable Asset Management**  
**Understand hardware/software configuration information**  
**Software Asset Management that is compliant with standards<sup>(\*)</sup>**  
Software information is automatically collected from PCs, so that the installation/usage status can be understood, making it possible to discover software that is not in use. Costs can be reduced through managing redundant licenses and batch-purchasing licenses.  
By identifying or disposing of PCs with an expired lease agreement or PCs with low CPU performance for which the disposal period may have been reached, this allows planned asset management, such as the reuse of licenses no longer required.

<sup>\*</sup>1: International standard ISO/IEC 19770-1:2006, Japanese industrial standard JIS X0164-1:2010

**Create an Asset Management Ledger, output reports, and save labor for stocktake**  
ICT devices connected to the network are detected automatically, and an Asset Management Ledger is created and maintained based on the actual status of the PC assets, using the inventory information that was collected. Asset protection required for internal controls can also be performed through reporting of Asset Management information.  
Assets managed using the Asset Management Ledger are deployed to a layout map showing the floor, and detailed information, contract information, and security auditing results of assets can be browsed from the map.

(Linkage with Microsoft Office Visio)

**Asset Management by Smart Device**  
Inventory information can be collected from smart devices (Android, iOS), and the devices can be managed in the same manner as PCs. Moreover, even individually-owned devices for business use can be managed in the same manner within an enterprise, while your privacy is protected.

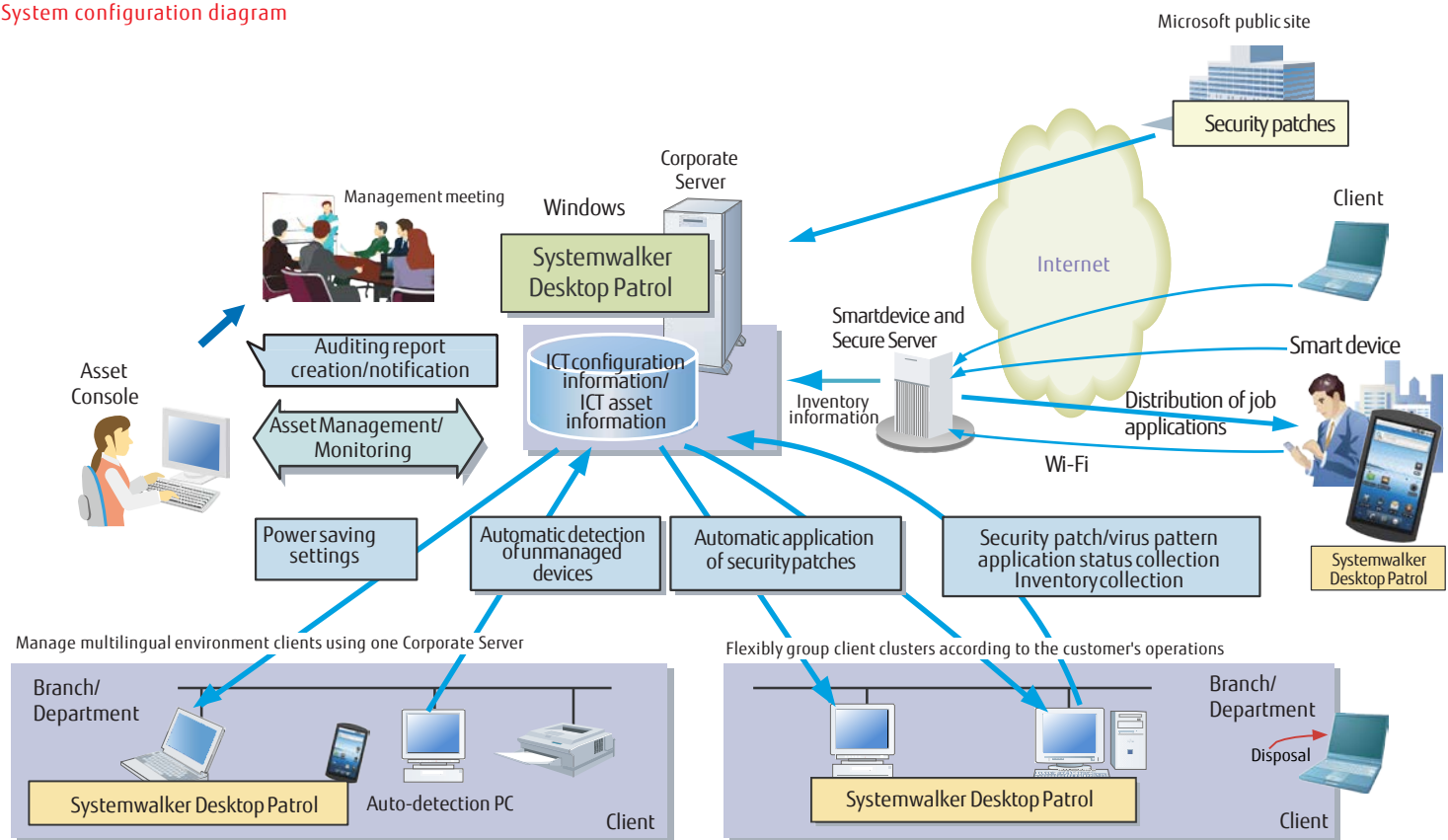
**Using the auditing report to understand the status of measures, and understand and evaluate departments and PCs that have risks**  
Output reports that allow you to audit/verify if the security measures have been implemented correctly, so that methods for implementing security measures can be reviewed, and risks are addressed at an early stage.



**System administrator support**  
**Task workload is reduced through batch management of software**  
Software that you want to deploy company-wide can be automatically downloaded to PCs and applied.

**Help desk tasks are made more efficient through using remote operations**  
Even issues that occur on PCs at a remote location can be resolved quickly and efficiently from an administrator's PC while checking the status of the user at the other end.

System configuration diagram



Note: The latest security patch information or virus pattern information is delivered via the Internet. This requires a separate SupportDesk service (paid) agreement.

Operating environment

\*1: Refer to the website for this product for details on the operating environment.

Product name	Server operating system	Client operating system
Systemwalker Desktop Patrol V15 (15.2)	Microsoft(R) Windows Server(R) 2016 Microsoft(R) Windows Server(R) 2012 Microsoft(R) Windows Server(R) 2008	Asset Console Windows(R) 10, Windows(R) 8.1, Windows(R) 7 Client Terminal (multilingual support)/ Auto Detection Terminal Windows(R) 10, Windows(R) 8.1, Windows(R) 7, Microsoft(R) Windows Server(R) 2016, Microsoft(R) Windows Server(R) 2012, Microsoft(R) Windows Server(R) 2008, Android 4.4 - 8.0, iOS 6.0 - 11.0

\*Microsoft and Windows are registered trademarks of Microsoft Corporation in the USA and other countries.  
\*Systemwalker is a trademark registered by Fujitsu Limited.  
\*All other proper names, such as product names, may be trademarks or registered trademarks of their respective owners.  
\*System names, product names and other proprietary names used in this document are not always accompanied by trademark symbols (TM) or (R).  
\*The contents of this catalog are subject to change, such as for improvements, without prior notice.  
\*This catalog is printed on recycled paper using vegetable ink.

Product information can be found on the Internet <http://www.fujitsu.com/systemwalker/>

FUJITSU LIMITED  
Shiodome City Center, 1-5-2, Higashi-shimbashi,  
Minato-ku, Tokyo 105-7123, Japan