

September, 2010

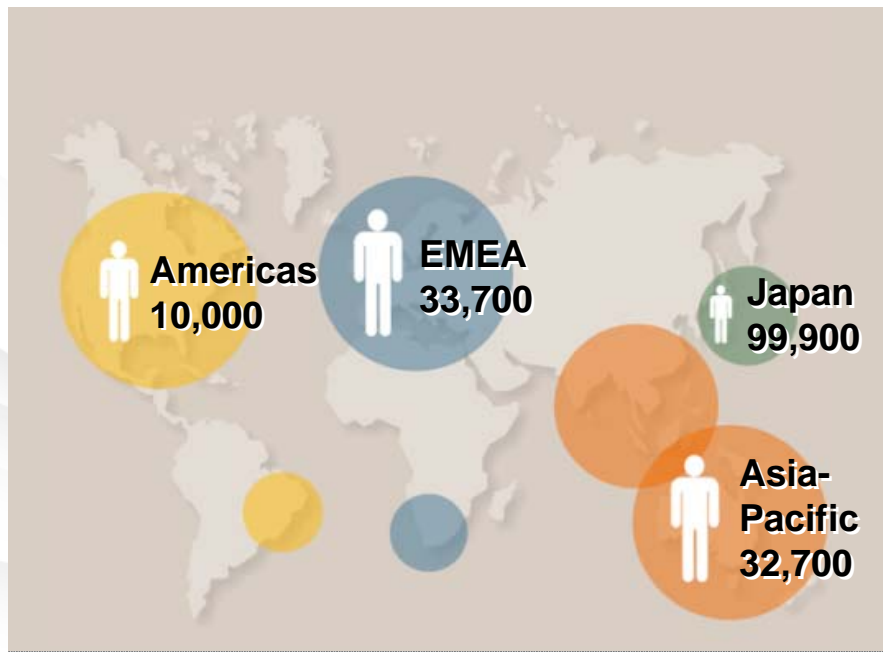


shaping tomorrow with you

Corporate Senior Vice President
Fujitsu Limited

Noriyuki Toyoki

FUJITSU



Established : June 1935

Employees : 176,000

Business Segments :

Technology Solutions

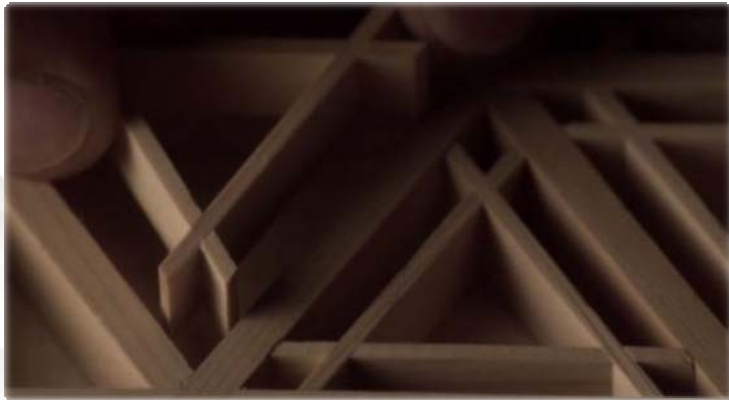
Ubiquitous Product Solutions

Device Solutions

Revenue : US\$ 50B

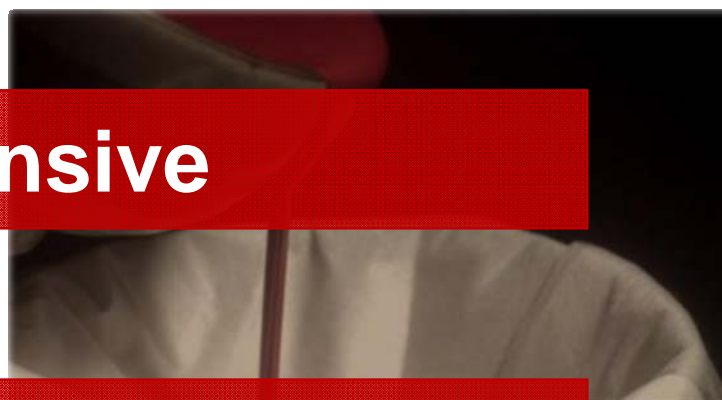
consolidated financials FY2009

shaping tomorrow with you

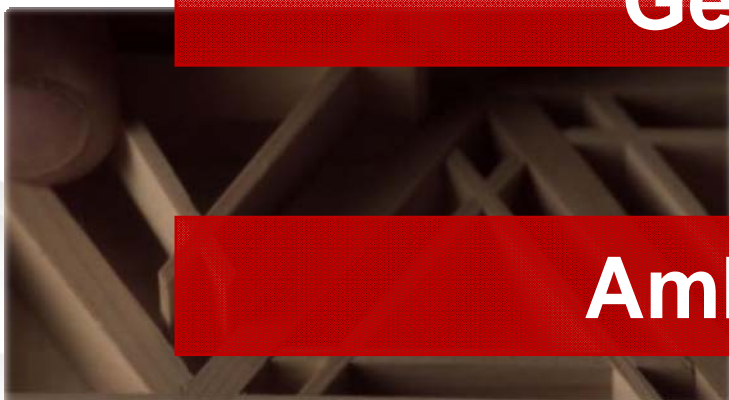




Responsive



Genuine



Ambitious





Human Centric Intelligent Society

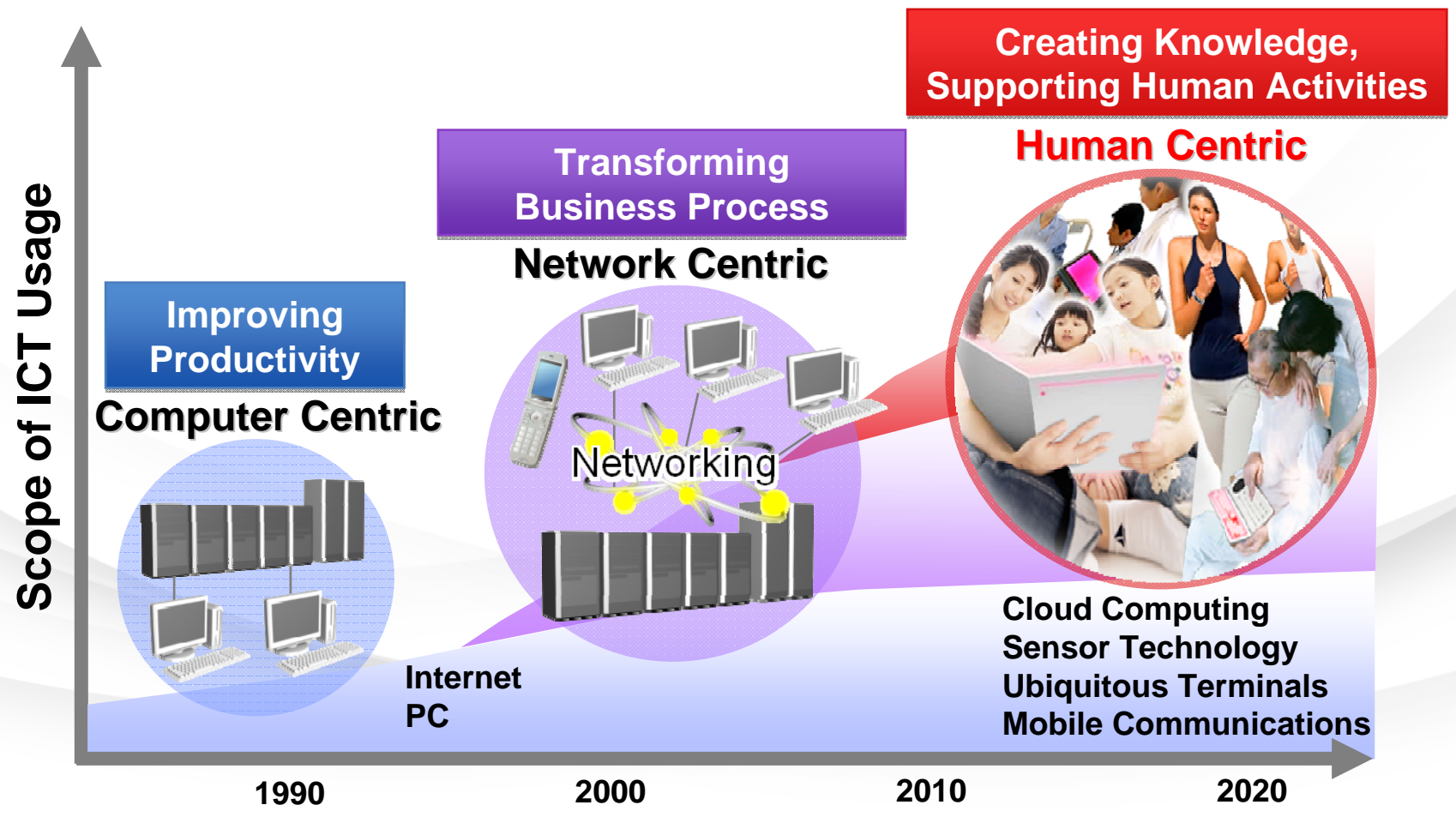




Intelligent Society



Pursuing Essential Human Values, Enhancing the Quality of Life



Food Health Energy Transport Logistics Environment



Real World

Data from many devices (sensors, mobile phones, terminals)

Practical Wisdom

Situation Appropriate services

Network

Virtual World

- ...
- ...
- IaaS
- PaaS
- SaaS
- Data Analysis
- Situation Awareness
- ...



High-Touch Services



Safety, Security



Entertainment



Low-Carbon Society





Transport



Food



Human Centric Intelligent Society

Smart Grids



Logistics/Retail



A red rectangular graphic with a black shadow and a white wavy background. The text "Fujitsu's DNA" is centered on the red rectangle.

**Fujitsu's
DNA**

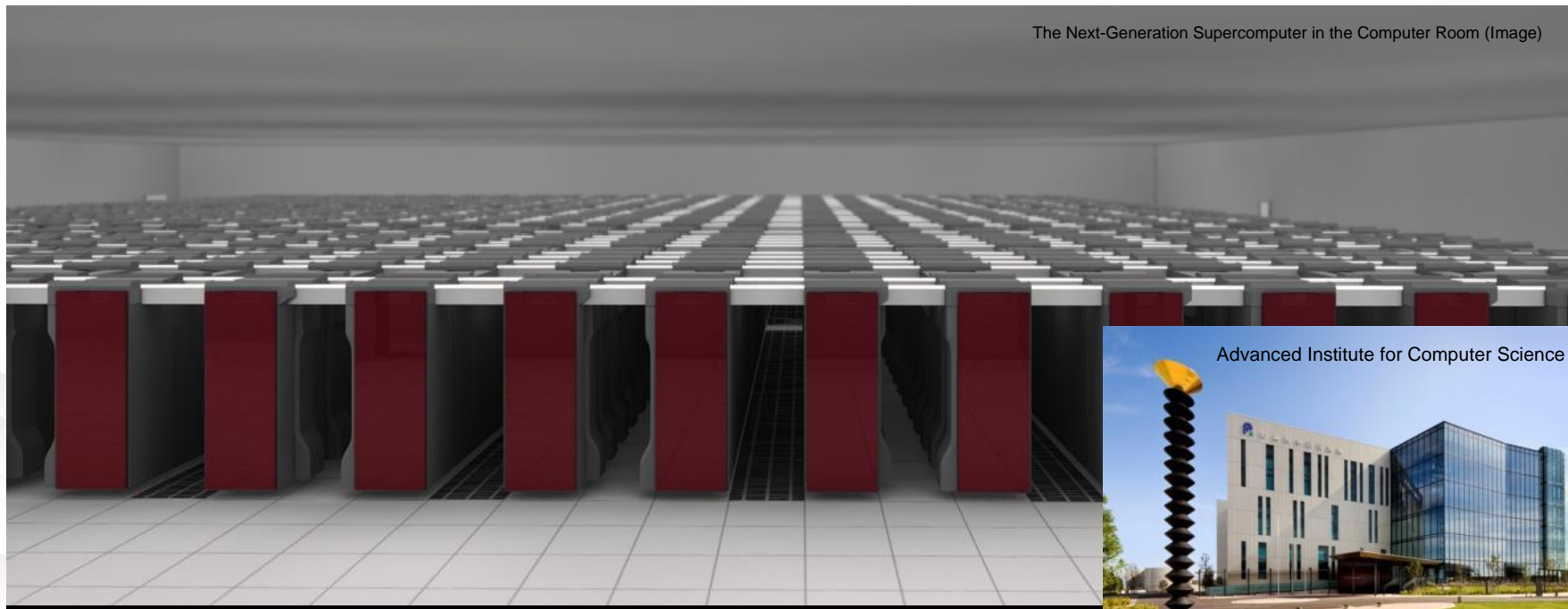


**Fujitsu's
Latest Activities**

Japan's Next-Generation Supercomputer

FUJITSU

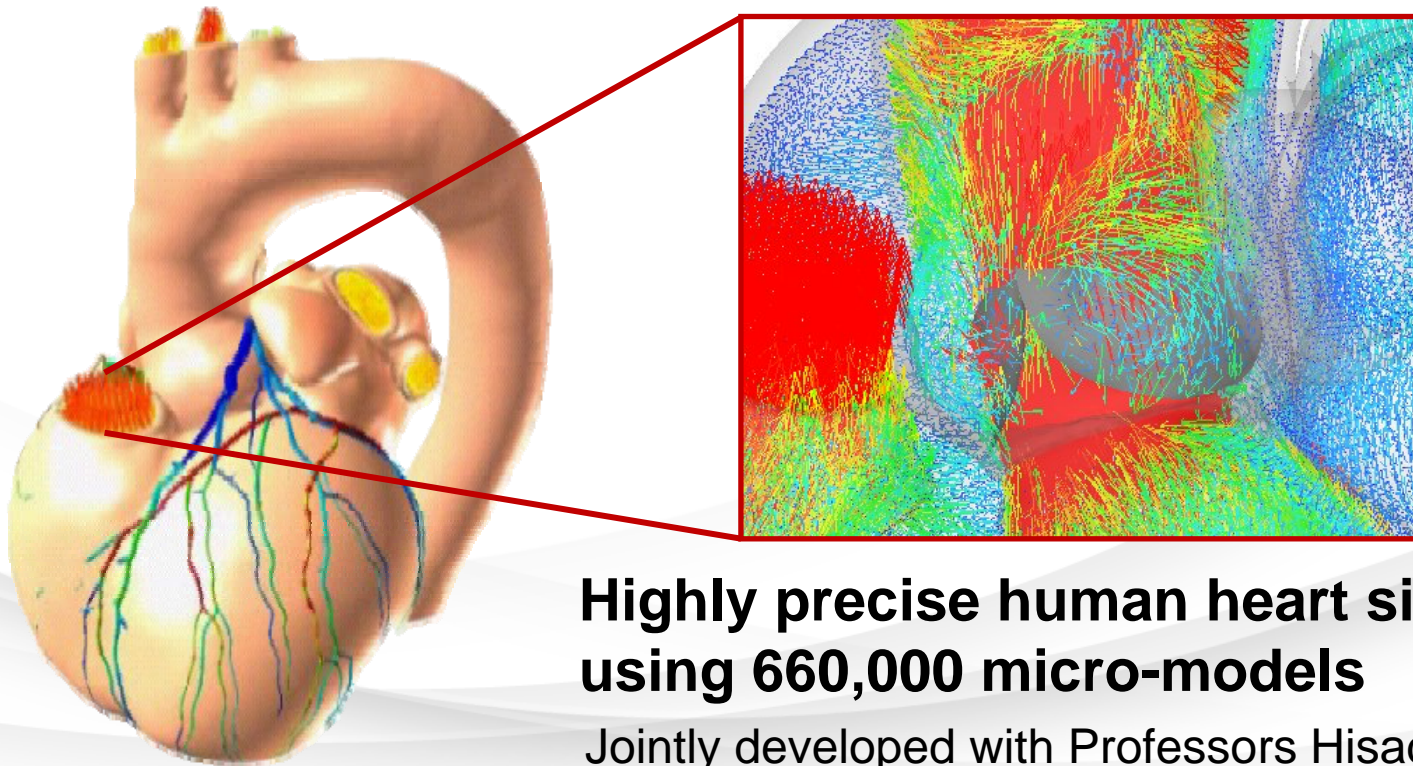
“K computer” – operational 2012



Performance target: 10 petaflops

Heart Simulation

FUJITSU

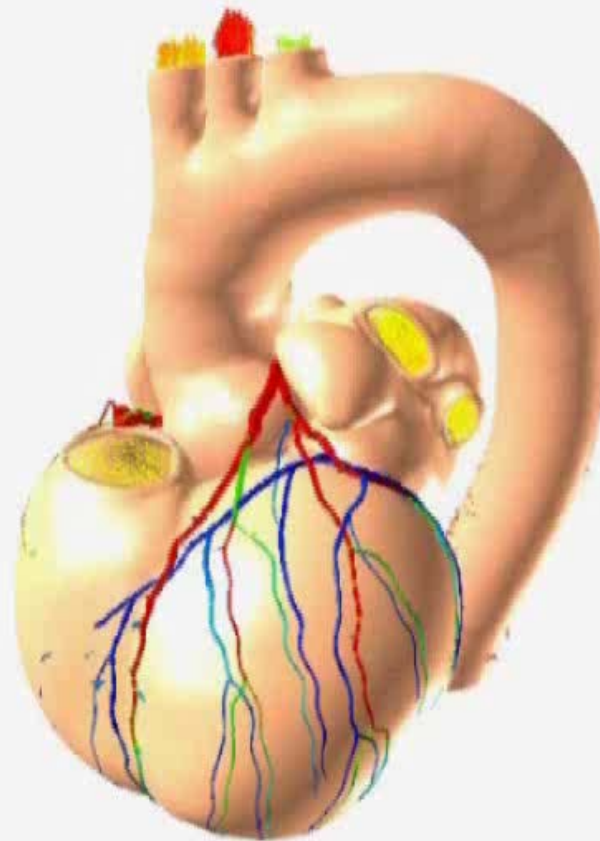


**Highly precise human heart simulation
using 660,000 micro-models**

Jointly developed with Professors Hisada
and Sugiura at the University of Tokyo

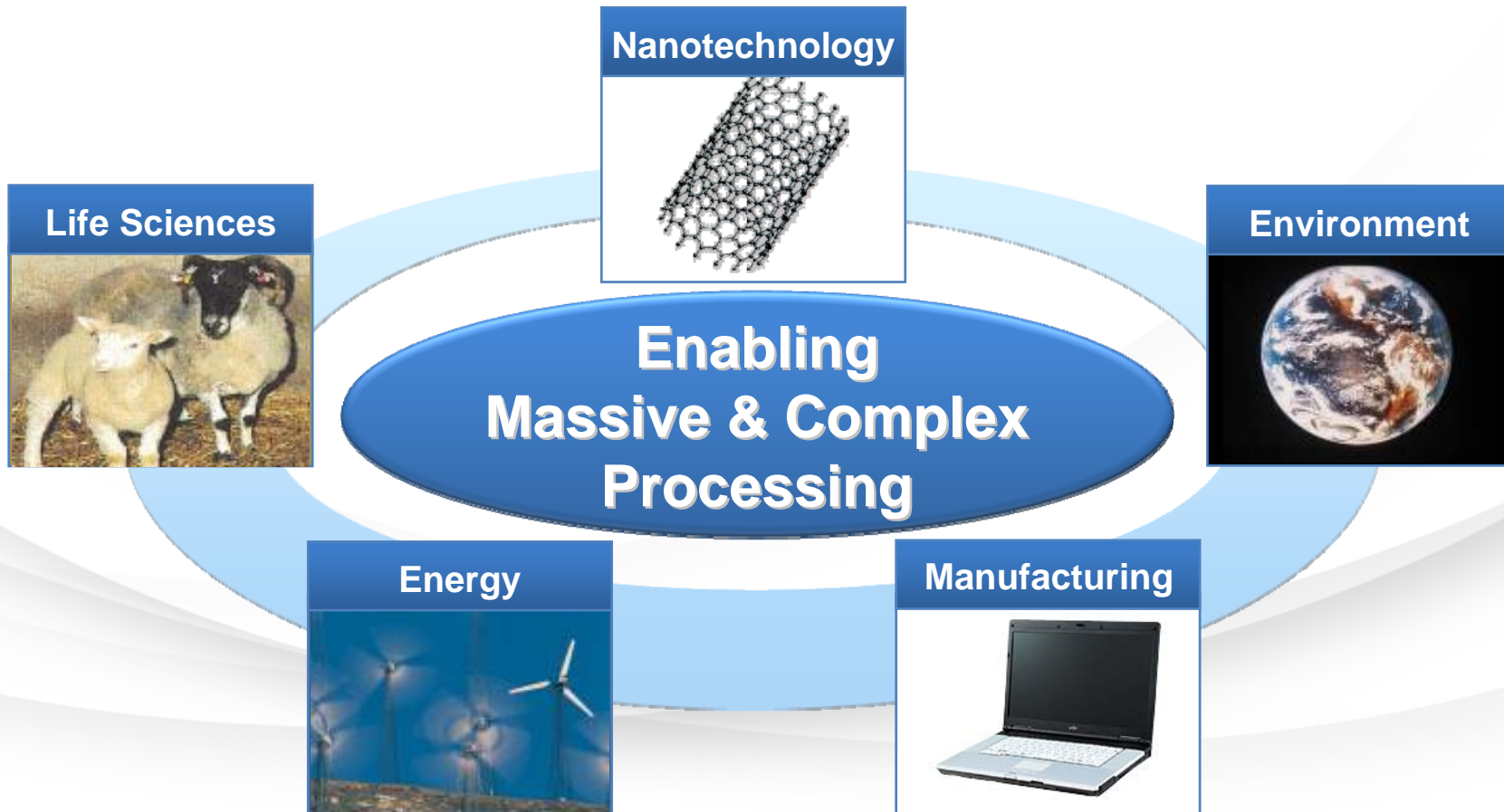
Heart Simulation

FUJITSU



Super Computer Enhanced Activities

FUJITSU



Cloud in Agriculture

FUJITSU



Delivering Wisdom to Young Farmers

FUJITSU

Operation check lists



Work plans

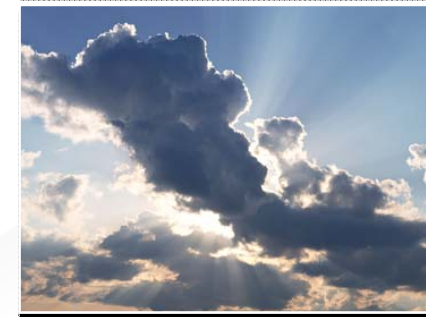
Productive working
(GPS)



Accumulation & Analysis



Weather



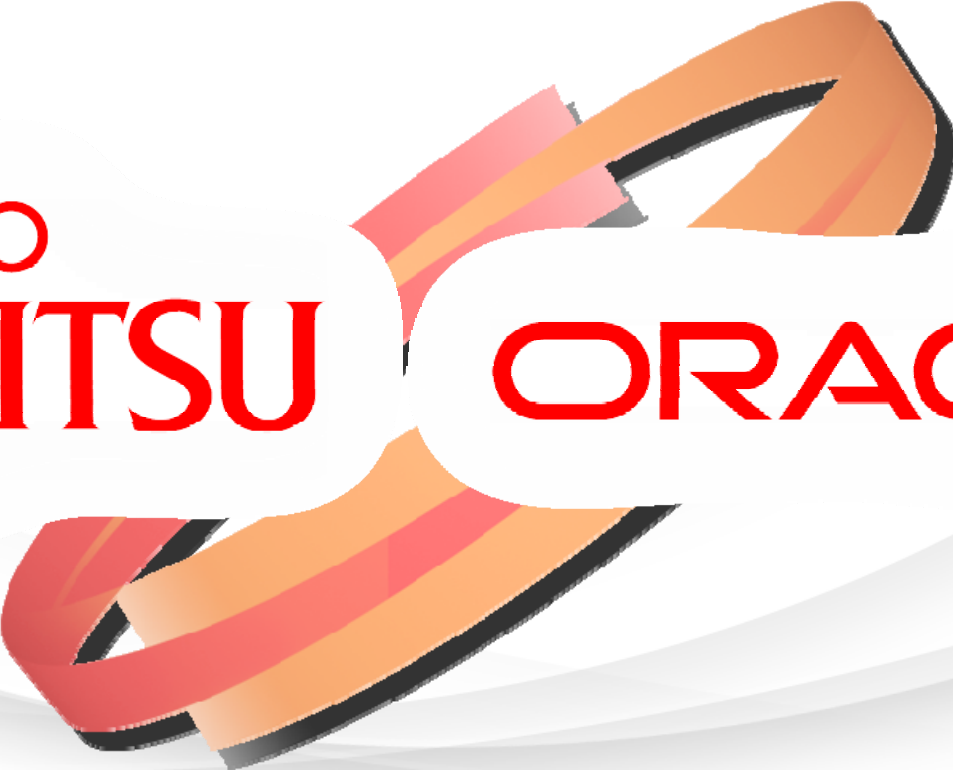
Best practice discovery


Determine
best Action

Recommendations and Advice



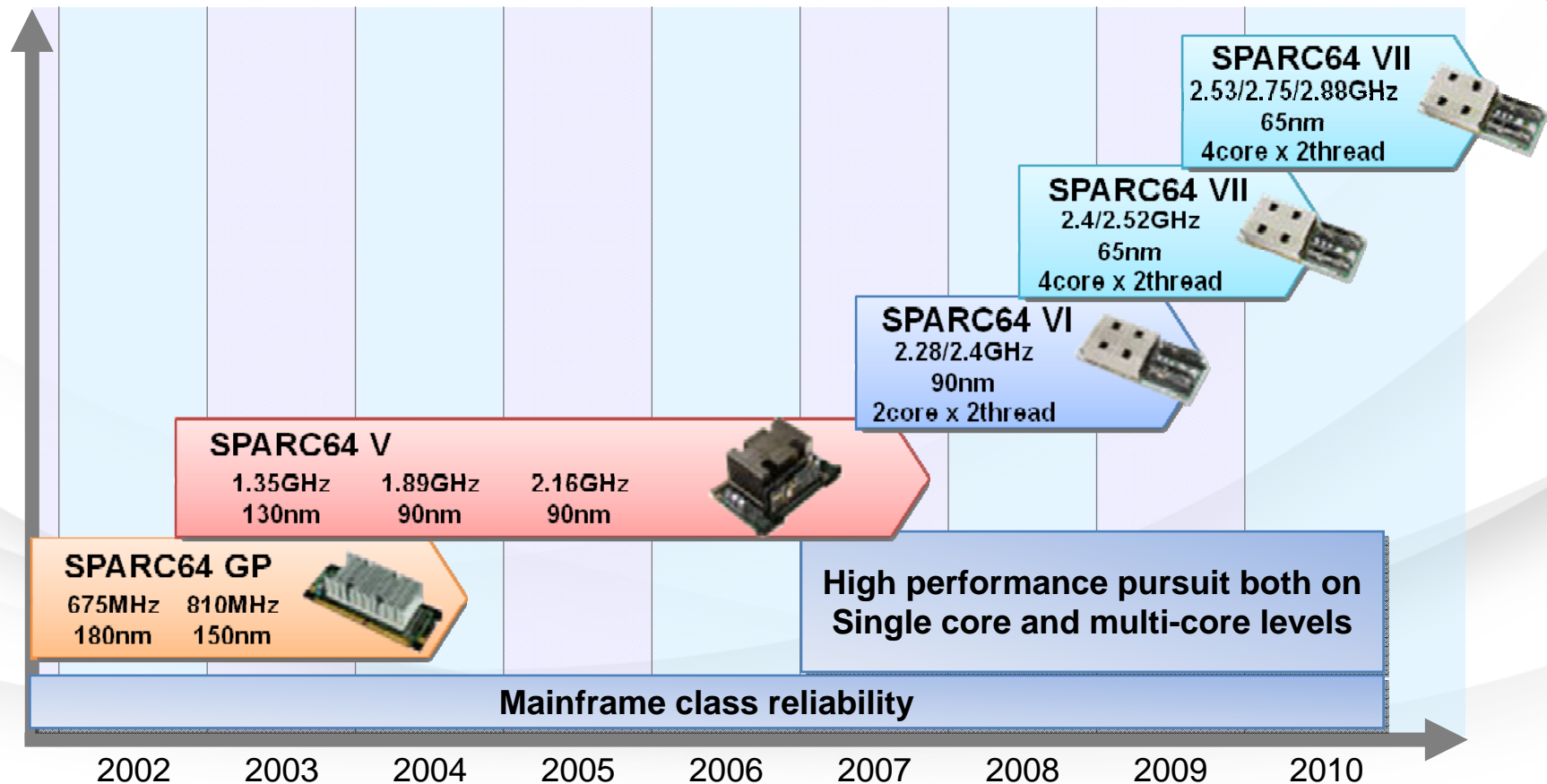
Soil conditions




FUJITSU

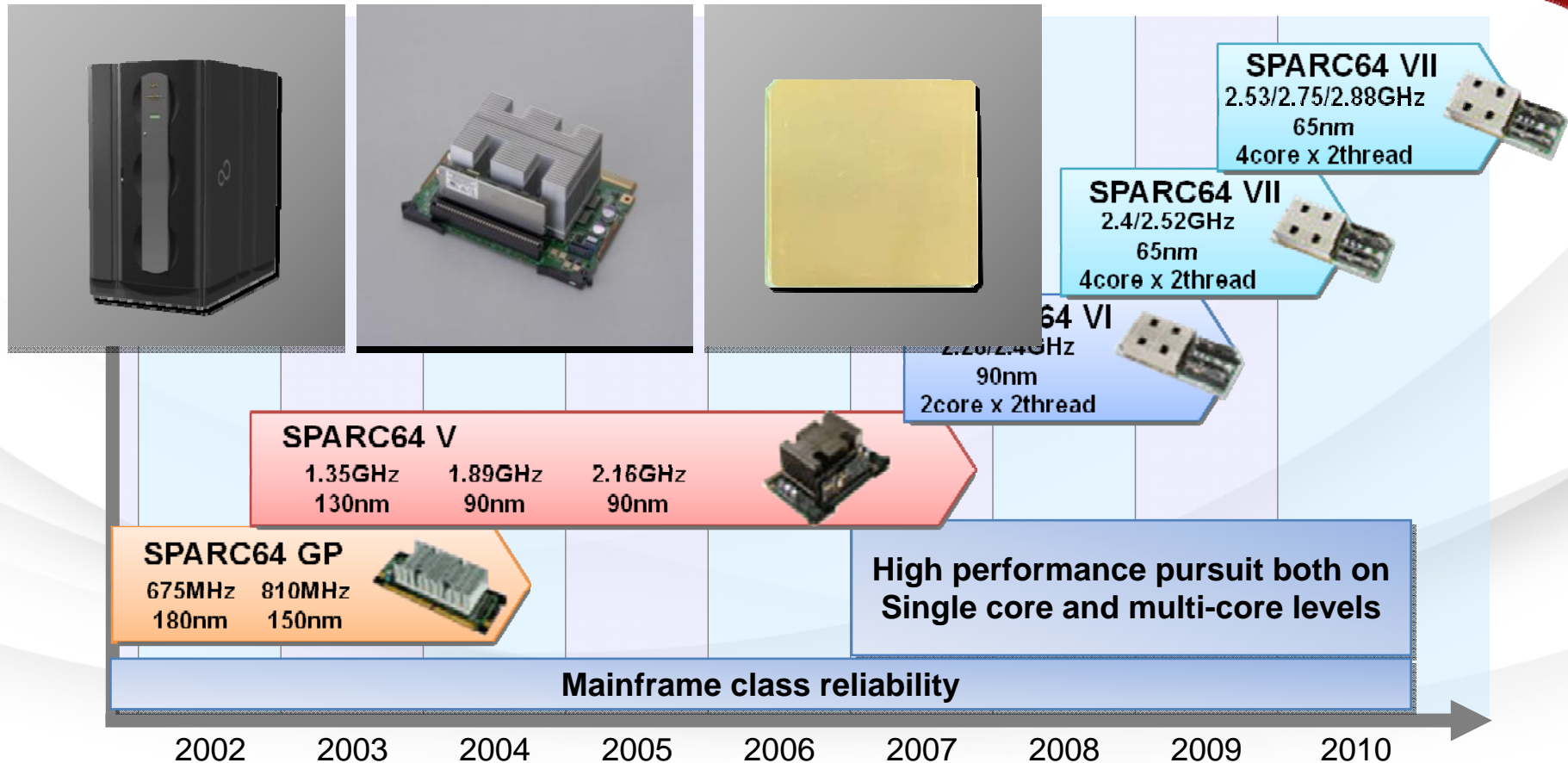
ORACLE®

Fujitsu Processor Development



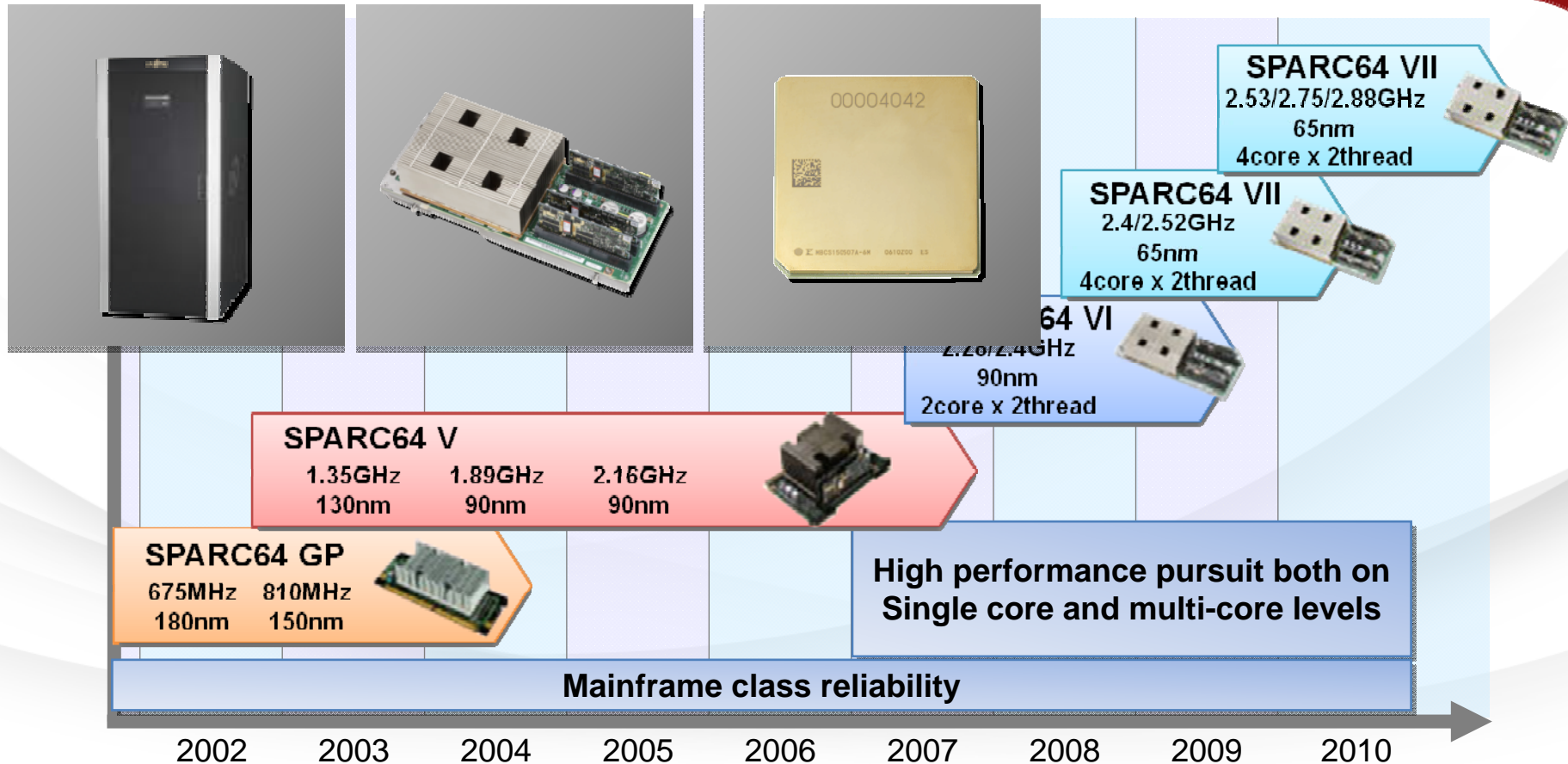
Note : This information may be changed without notice.

Fujitsu Processor Development



Note : This information may be changed without notice.

Fujitsu Processor Development



Note : This information may be changed without notice.

Optimized Scalability, Robustness and Virtualization

FUJITSU



**Technology Innovation and
Best Enterprise OS**

**Mission-Critical
Technology**

Fujitsu Server Direction

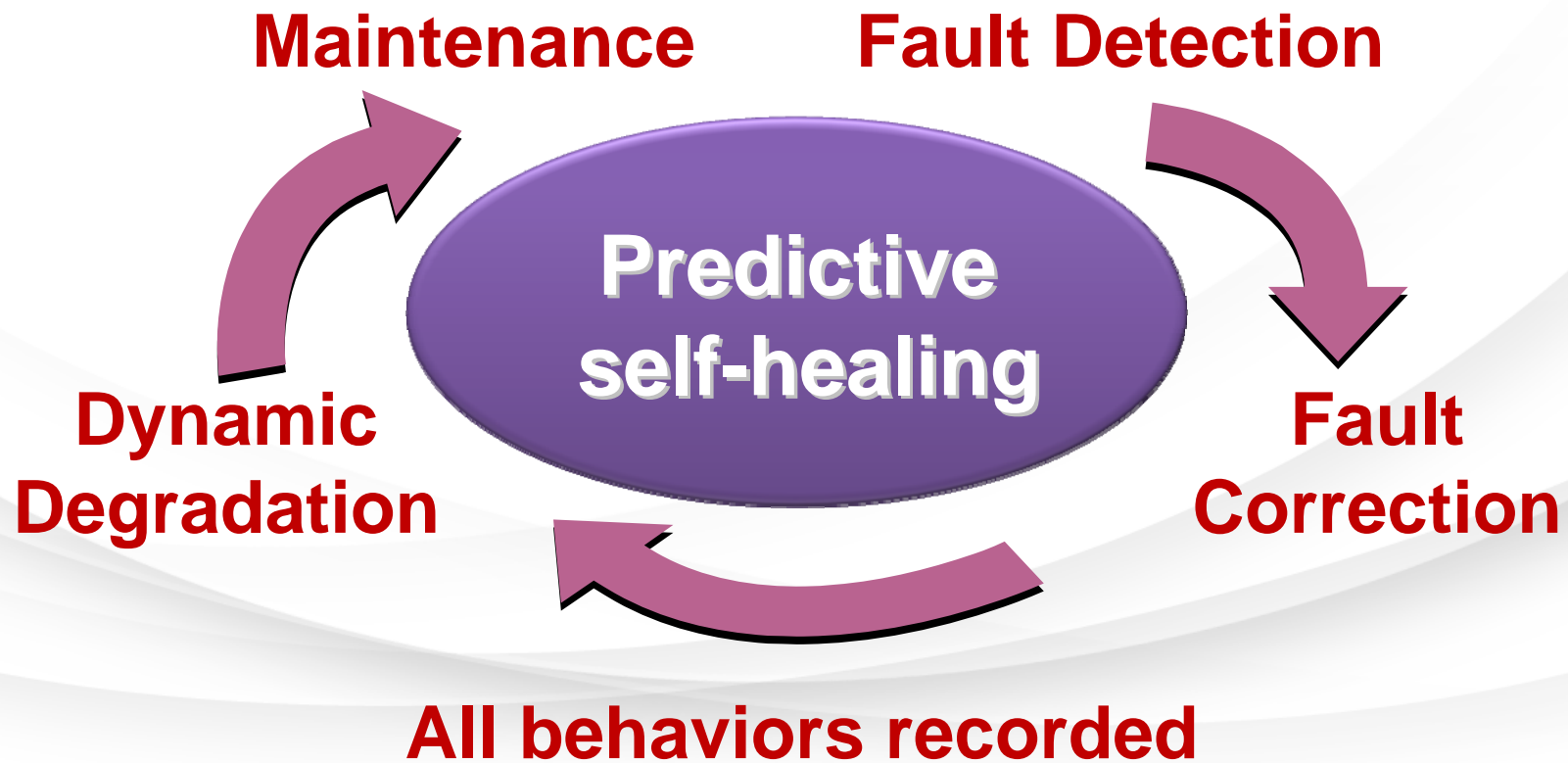
FUJITSU



- **Business Continuity**
- **Flexibility**
- **Easy Expansion**

The Perfect Blend of SPARC Enterprise & Solaris

FUJITSU



The Perfect Blend of SPARC Enterprise & Solaris



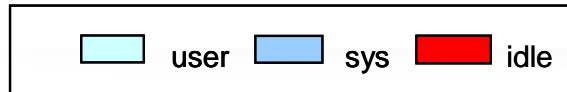
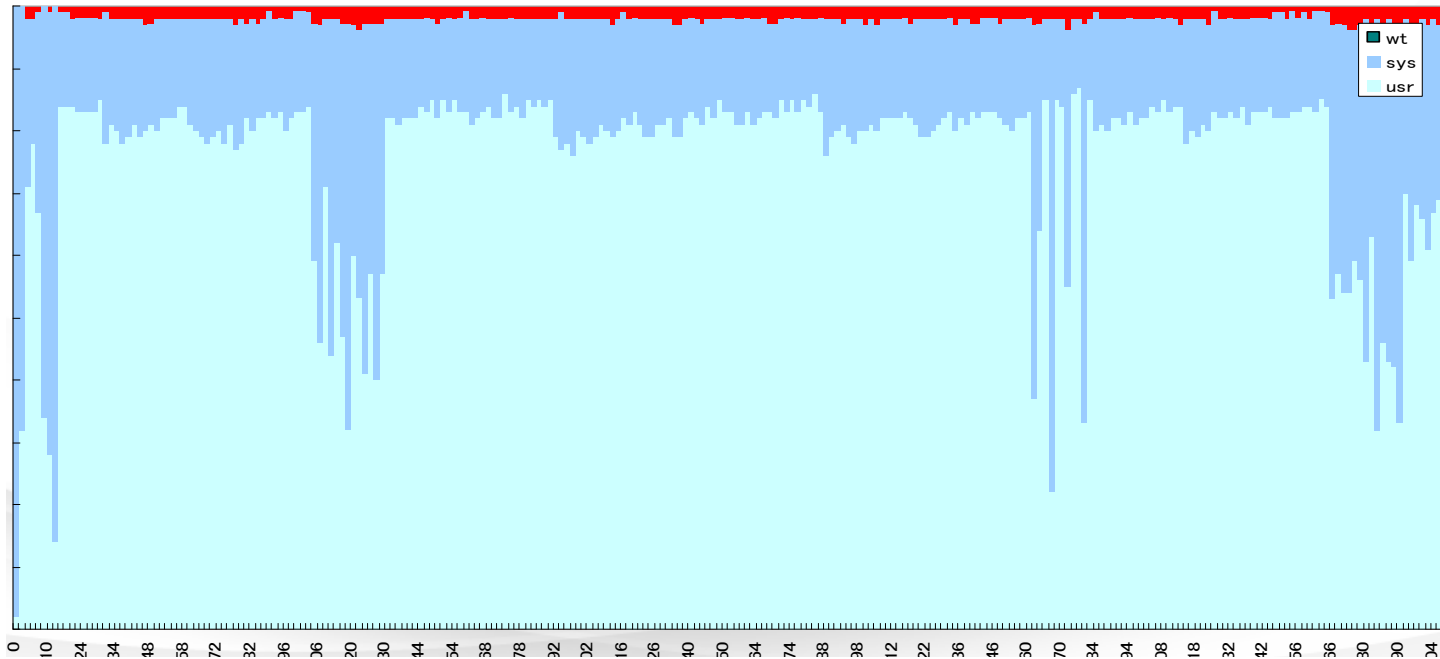
CPU Utilization Graph

User/sys (%)

100

50

0



Number of threads

SPARC Enterprise

Effective Error Minimization

Effective Hardware Fault minimization

Error Prevention at EVERY Level

Cloud Computing

Private

Public

Flexible

Highly Trusted

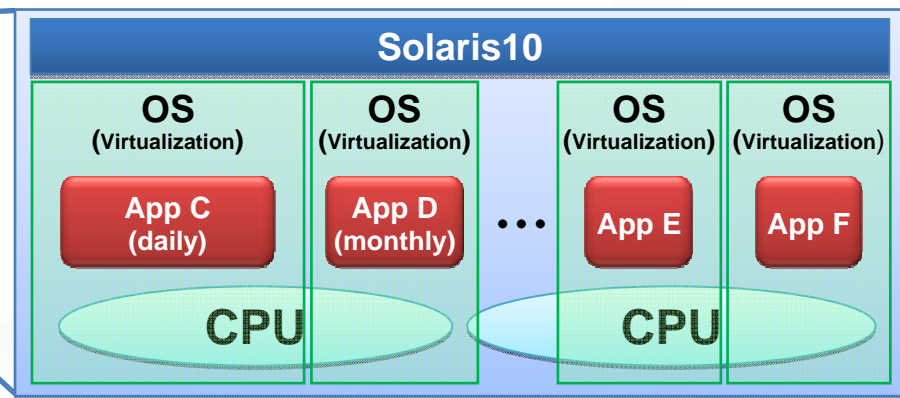
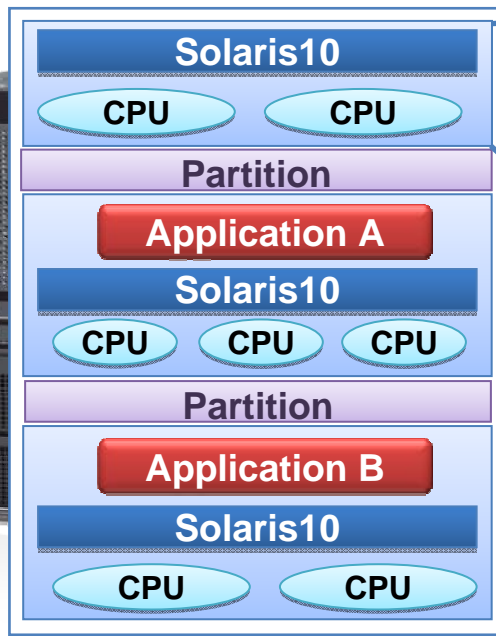
Trustable Virtualization

**Hardware Partitioning
(M4000/M5000/M8000/M9000)**

Total Partition Separation

**SOLARIS Containers
(Solaris10)**

Total Flexibility (max, 8,191 containers)



Consolidation of Varying Workloads

Aggressive Growth Through Partnerships



“Think Global, Act Local”



New service creation

**Cloud based Models, New Customer Value,
Human centric services**

SPARC Enterprise M-Series



- **Best platform for mission-critical workloads**
- **Agility to adapt to business change**
- **Customer investment Protection**

Virtualization

Solaris Containers

Solaris ZFS

**Dynamic
Reconfiguration
(XSCF-DR)**

Scalability

SMP Inter-connect

Oracle Solaris

**Memory Placement
Optimization**

Availability

**System RAS
(Robustness)**

Hardware Partitioning

Solaris FMA

ORACLE & Fujitsu Partnership

FUJITSU



ORACLE & Fujitsu Partnership

FUJITSU



UK OUG
PARTNER OF THE YEAR
AWARD WINNER 2009/2010



ORACLE & Fujitsu Global Partnership

FUJITSU



A red rectangular graphic with a black shadow and a white wavy background. The text "Case Study" is centered in white.

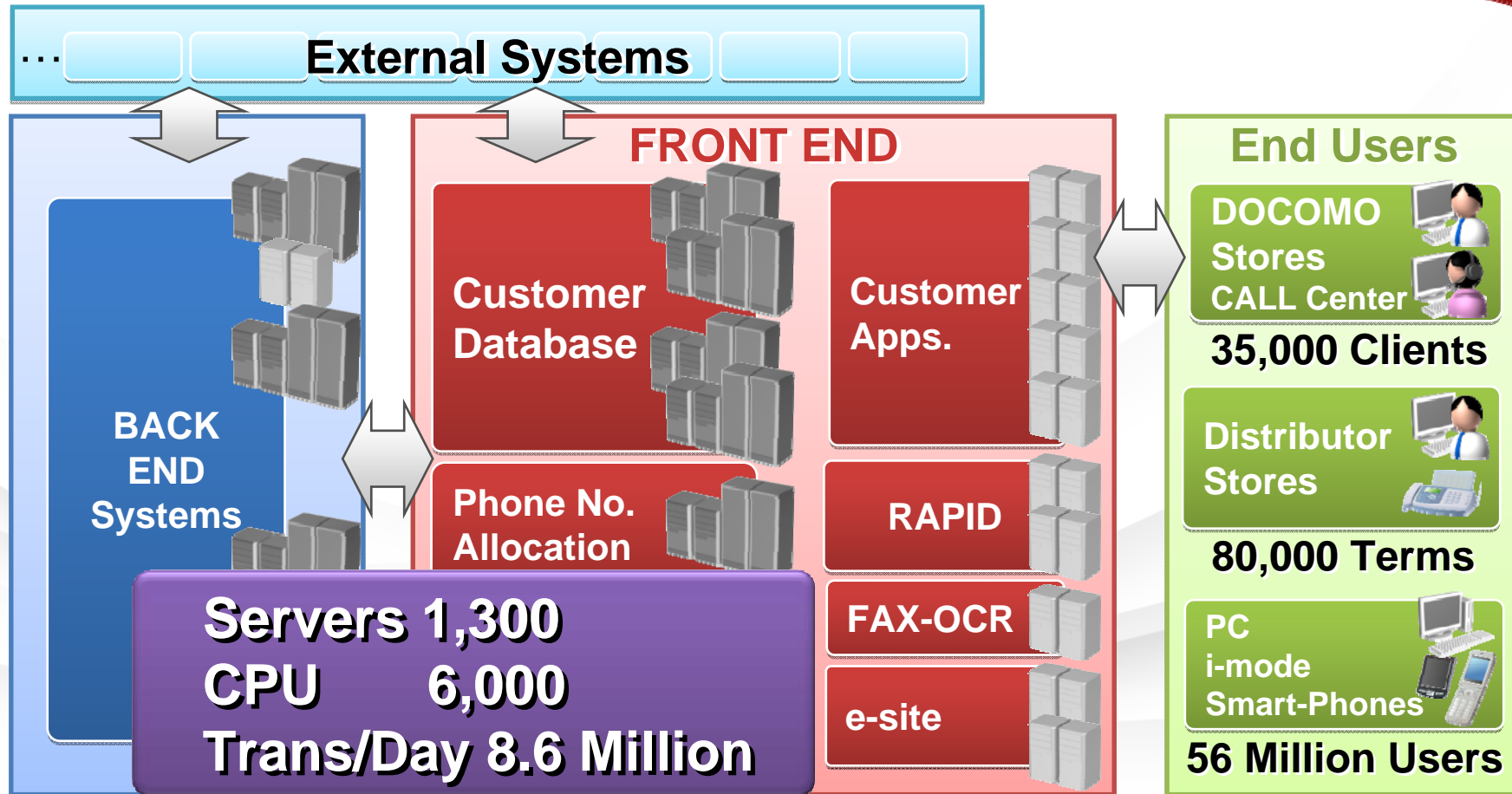
Case Study

Case study

FUJITSU



ALADIN Overview



Case study

FUJITSU



SPARC Enterprise Servers

FUJITSU

Maximizing Results



5 Year Trajectory	
Cores	4x
Threads	32x
Memory Capacity	16x
Database TPM	40x
Java Ops Per Second	10x

T-Series
1-4 Socket
+ 2x Throughput

Solaris 10
Update

M-Series
1-64 Socket
+ 20%

Solaris 10
Update

T-Series
1-4 Sockets
+3x Single Strand

Solaris 11

M-Series
8-64 Sockets
+6x Throughput
+1.5x Single Strand

Solaris 11
Update

T-Series
1-8 Sockets
+3x Throughput

Solaris 11
Update

M-Series
8-64 Sockets
+2x Throughput

Solaris 11
Update

SPARC
1-64 Sockets
+2x Throughput
+1.5x Single Strand

2010

2011

2012

2013

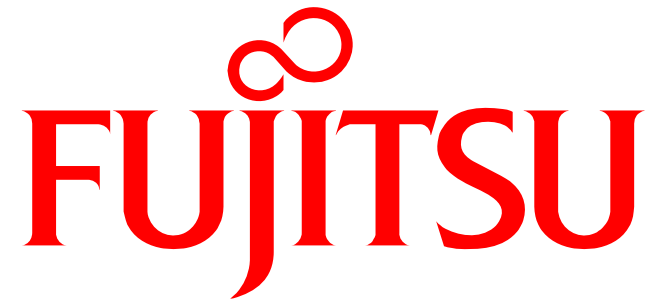
2014

2015

SPARC Enterprise Servers M9000

FUJITSU



The Fujitsu logo consists of a red infinity symbol positioned above the word "FUJITSU". The word "FUJITSU" is rendered in a bold, red, serif typeface. The infinity symbol is a simple, continuous red line forming two interlocking loops.

FUJITSU

shaping tomorrow with you