

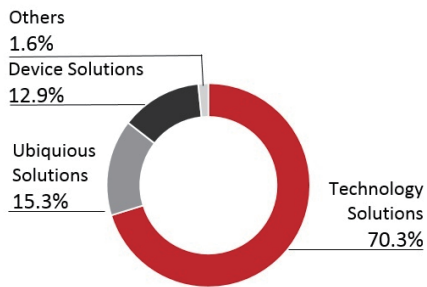
Fujitsu Group Profile (as of March 31, 2018)

Company Name	Fujitsu Limited	Capital	¥324.6 billion
Addresses	<ul style="list-style-type: none"> ● Kawasaki Main Office 4-1-1 Kamikodanaka, Nakahara-ku, Kawasaki-shi, Kanagawa 211-8588, Japan ● Headquarters Shiodome City Center 1-5-2 Higashi-Shimbashi, Minato-ku, Tokyo 105-7123, Japan 	Total Assets	¥3,121.5 billion (Liabilities: ¥1,916.6 billion, Net assets: ¥1,204.9 billion)
Representative Director President	Tatsuya Tanaka	Fiscal Year-end	March 31
Established	June 20, 1935	Employees Consolidated	140,365/ Unconsolidated: 32,969
Main Business Activities	Manufacture and sale of communications systems, information processing systems, and electronic devices, and the provision of services related to those products	Directors	10 (incl. 2 female directors and 4 outside directors, as of June 25, 2018)
		Consolidated Subsidiaries	462 companies
		Equity-method Affiliates	23 companies
		Stock Exchange Listings	Tokyo, Nagoya

Regarding Our Business Segments

The Fujitsu Group provides a wide range of services and products with the advanced technology, high performance and high quality essential for the future of the ICT sector, and operates an integrated total solutions business, from the development, manufacture and sale of those products and electronic devices to the provision of maintenance services.

Break down of Revenue by Business Segment



Note: Revenue include intersegment sales

Technology Solutions

The Technology Solutions segment provides corporate customers around the globe with IT-driven business solutions based on our advanced technology and high-quality system platforms and services.



Data center (Tatebayashi)

Ubiquitous Solutions

The Ubiquitous Solutions segment provides corporate PCs and mobile phones.



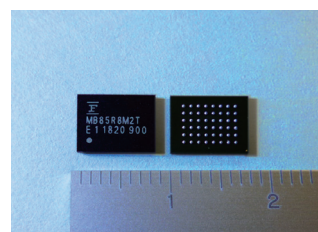
[arrows NX F-01K]



[arrows Be F-04K]

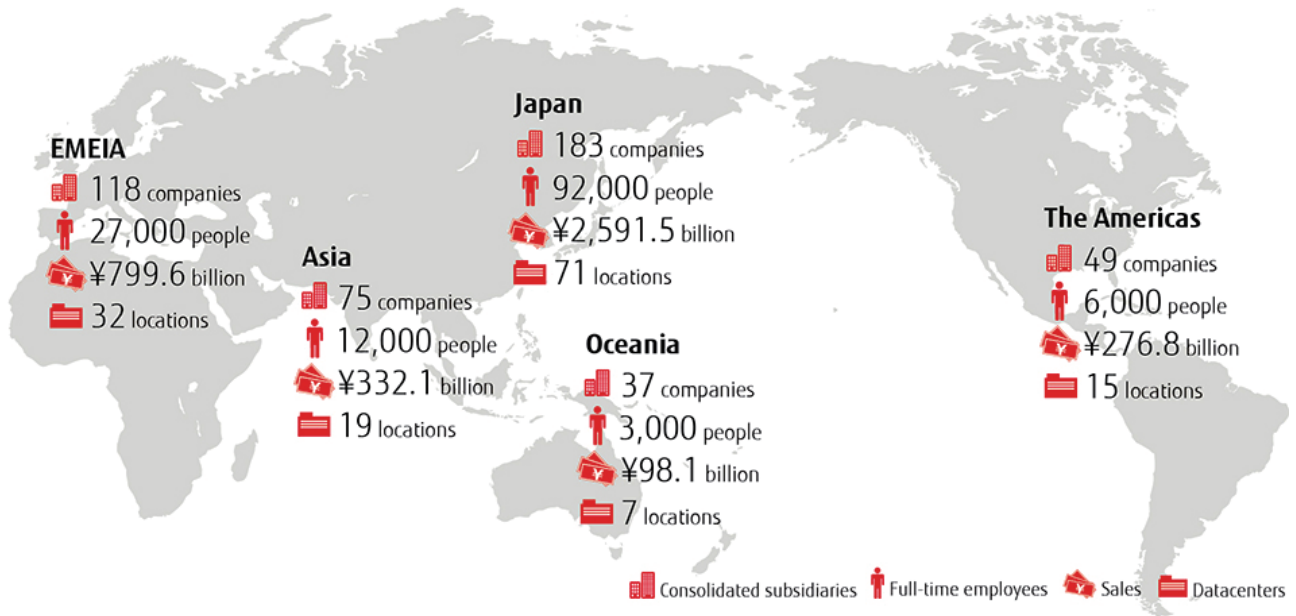
Device Solutions

The Device Solutions segment provides LSI devices for digital consumer electronics, automobiles, mobile phones and servers, as well as semiconductor packages and other electronic components. The segment also offers electronic components, such as batteries, relays and connectors.



8M bit FR [MB85R8M2T]

Global Business System



*As of March 31, 2018.