

Introduction to Systemwalker Desktop Patrol V13.2

FUJITSU LIMITED

July 2008

- I. Desktop management challenges
- II. Our solutions
- III. Summary of features
- IV. Sample System Structure

Difficult to:

- ◆ Know where and how PCs are installed and used due to frequent organizational changes
- ◆ Know if proper security measures are implemented on all PCs
- ◆ Manage software licenses efficiently and at lowest cost
- ◆ Upgrade business applications installed on clients company wide.
- ◆ Respond quickly to remote PC problems.

II. Our solutions

- Simplify asset management of end user PCs
- Minimize information leakage by PC security status monitoring and automatic application of security patches
- Optimize the number of license purchases
- Reduce time and cost of distributing & installing software on multiple PCs.
- Reduce time and cost of troubleshooting end user PCs.

III. Summary of features

- 1. Current status information collection from PCs**
- 2. Improved PC Security**
- 3. Automated Security Patch Application**
- 4. Software License Management**
- 5. Resource Distribution**
- 6. Remote PC Operation**
- 7. Linkage with Active Directory**

1. Current information collection from PCs

- Easy to know who is using what kind of PC
- Easy to view patch application & virus pattern file status on each PC
- Central collection of PC H/W & S/W configuration, status, usage, etc.

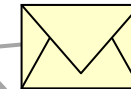
Administrator



Management Server



Distribute software dictionary by Email



Fujitsu Support Center

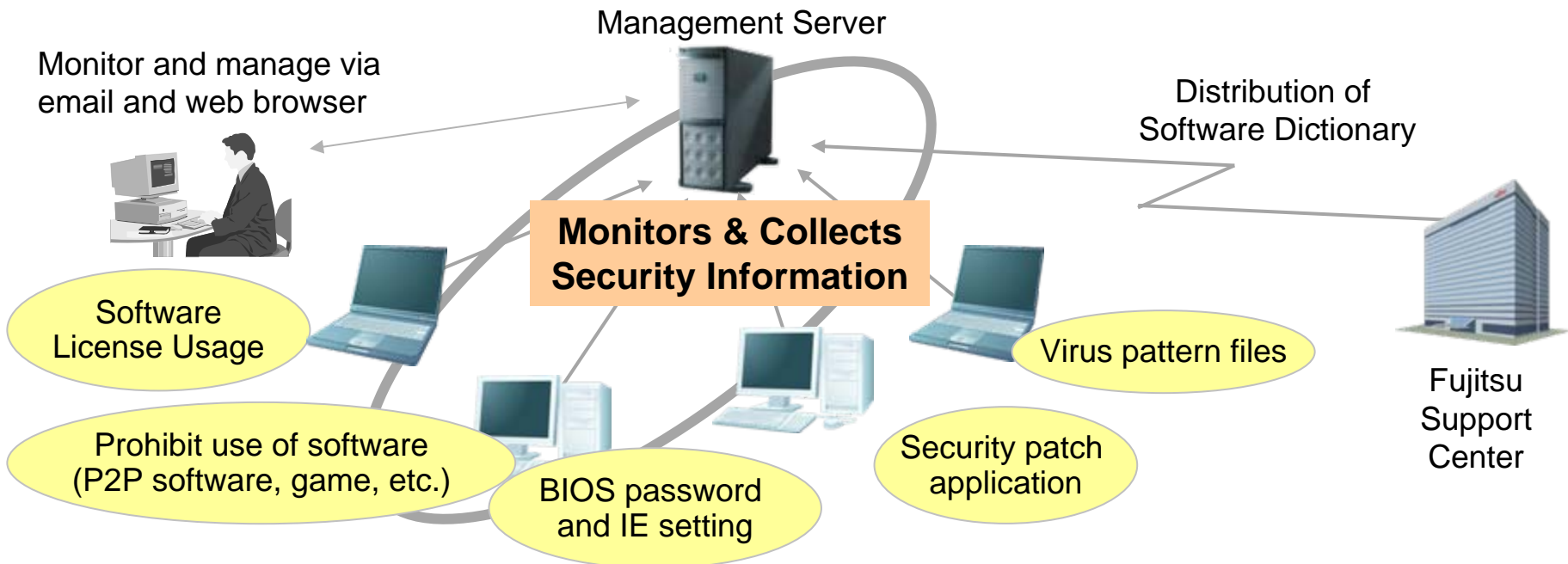
Automatic batch collection

- 1) Quickly and easily collection of hardware information at any time
- 2) Remote PC power on/off



2. Improved PC Security

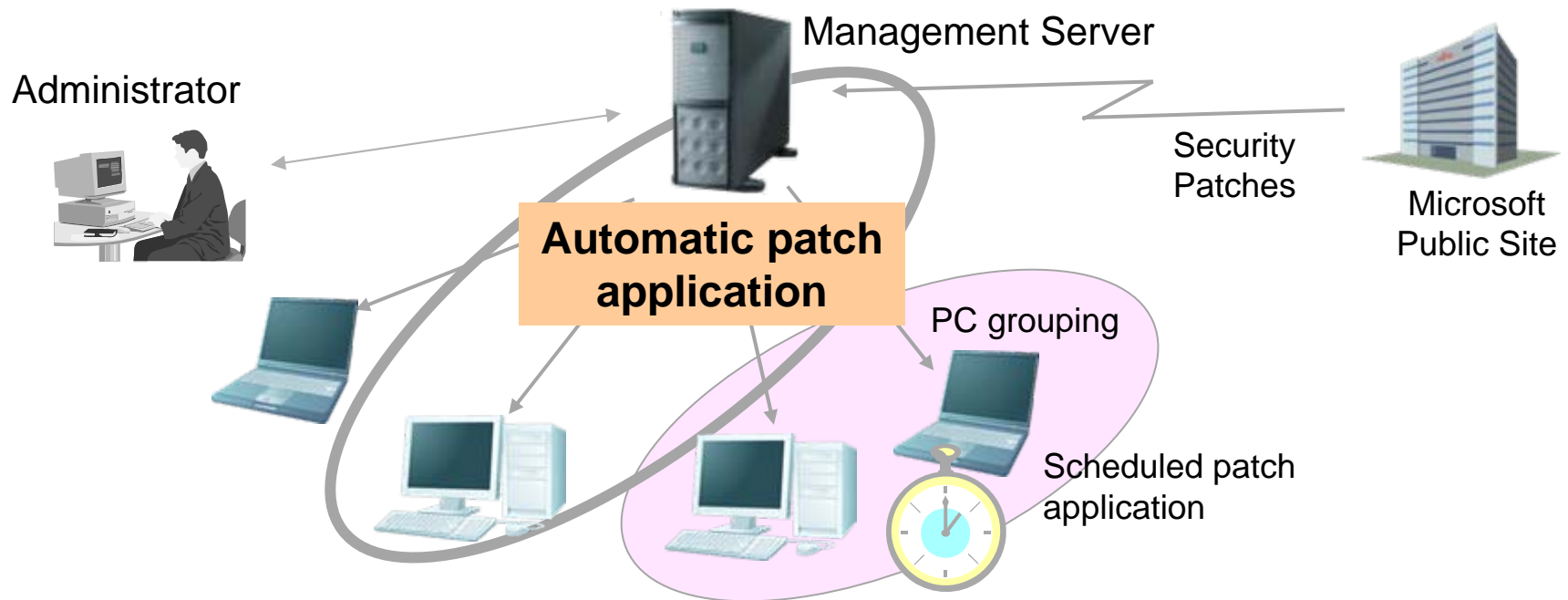
- Automatic detection of PCs with out-of-date security patches, and application of latest patches
- Automatic detection of PCs with out-of-date virus patterns
- Automatic detection of PCs with low-level security including:
 - ◆ No BIOS password
 - ◆ Automatic log-in set
 - ◆ Low Internet Explorer security settings



3. Automated Security Patch Application

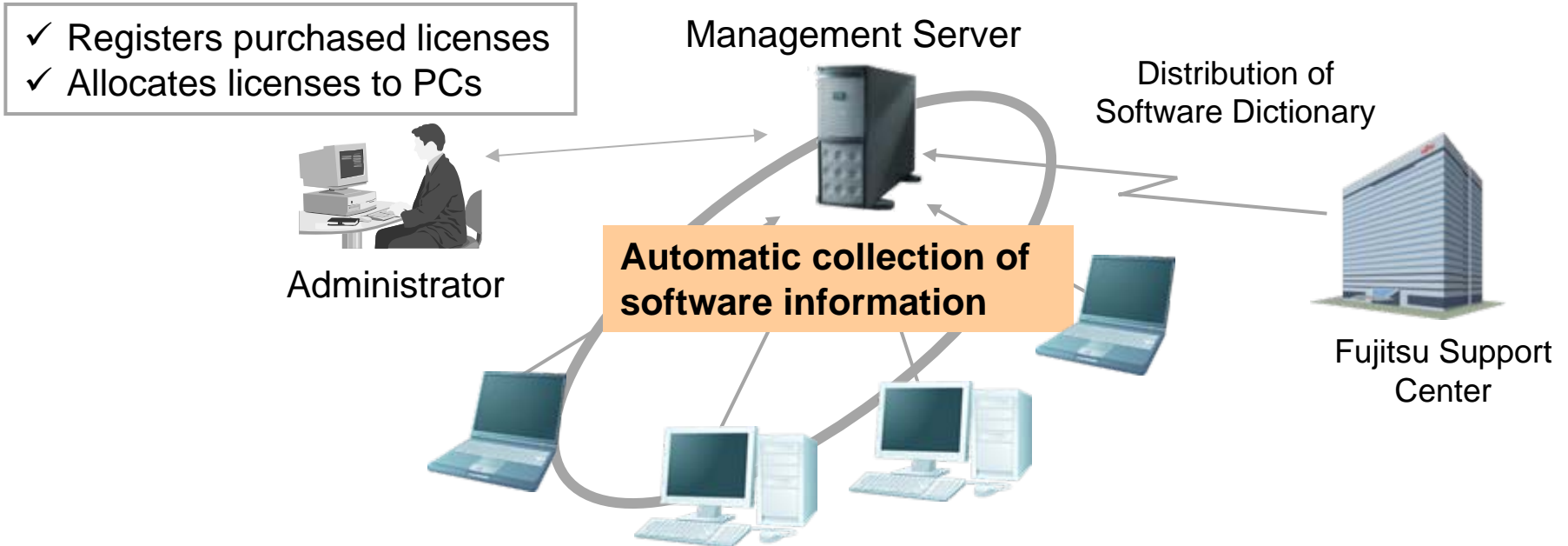
Multi-PC security patch application reduces administrator load
 PC user independent security patch application removes complexity

- Automatic application of latest security patches.
- S/W patch application can be scheduled to groups of PCs. Able to complete application even outside business hours
- Only essential patches are applied



4. Software License Management

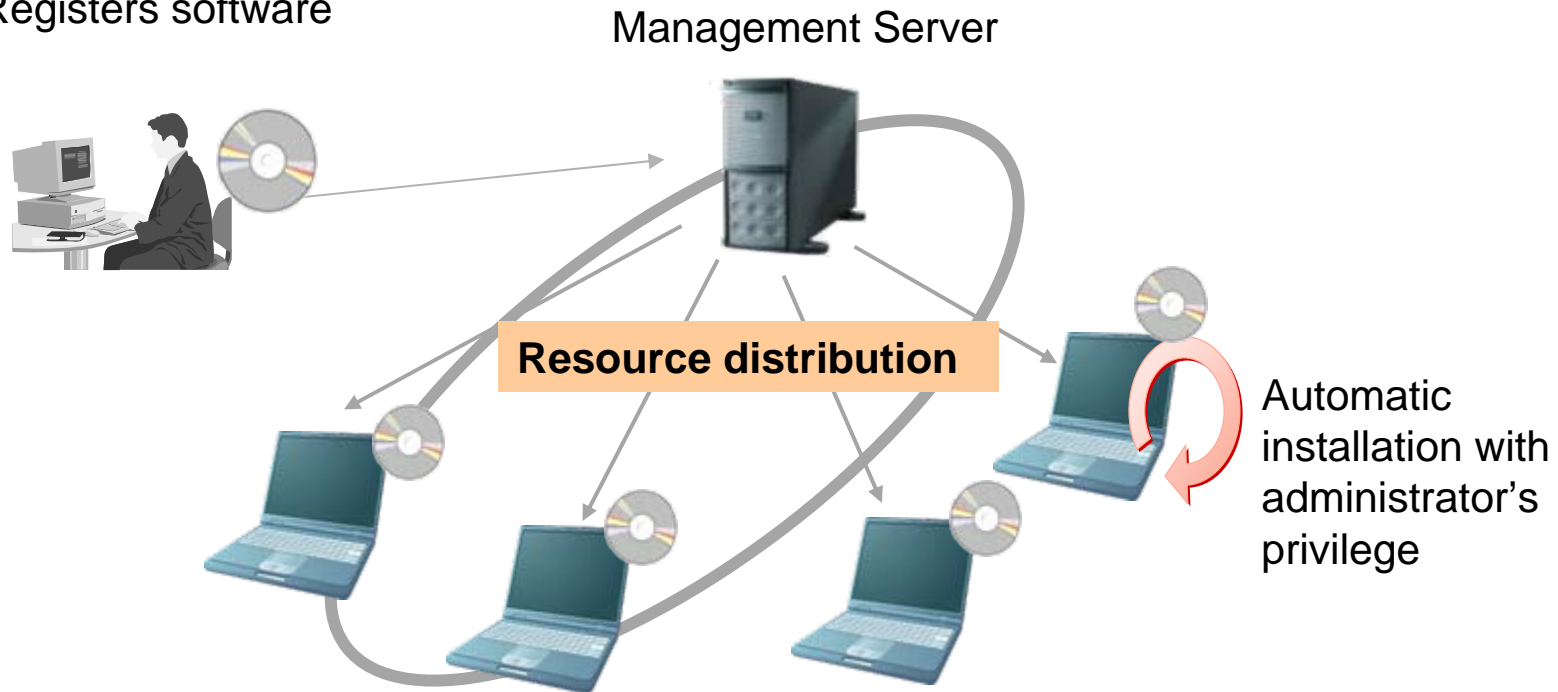
- Grants PC users licenses to use specific software, and monitors if they use that software or not
 - enables more efficient use of available licenses.
 - detects illegal use of software
- Compares total number of purchased licenses with actual use
- Simple addition or deletion of software in the Software Dictionary allows customization of the scope of software license management



5. Resource Distribution

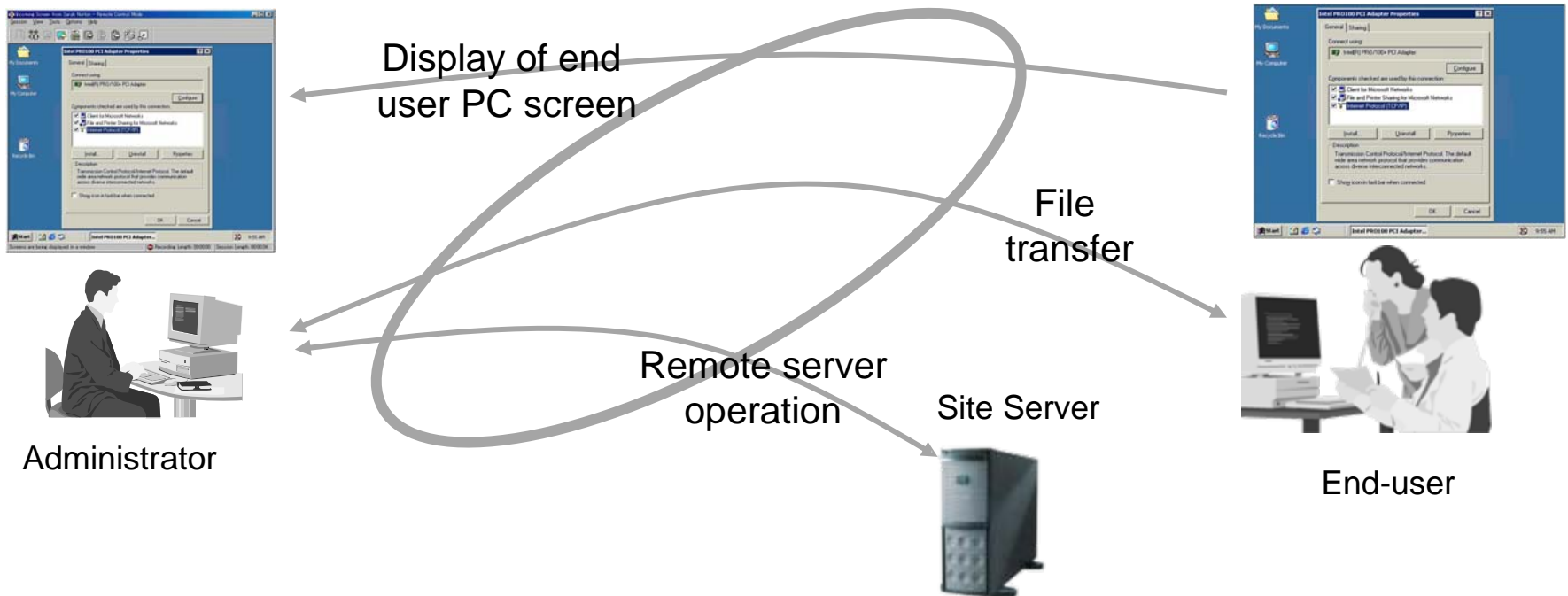
- Automatic distribution and installation of software to all company PCs at once
- Scheduled resource distribution

- ✓ Sets resource policy
- ✓ Registers software



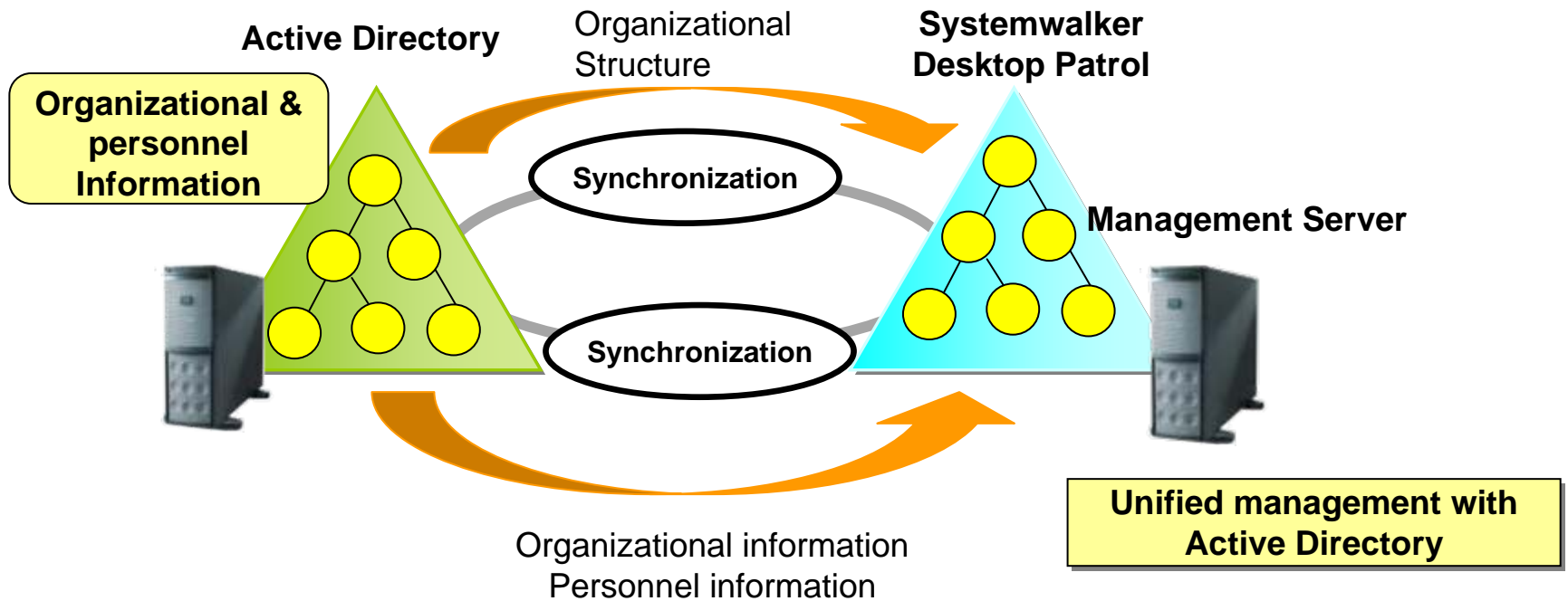
6. Remote PC Operation

- Fast recovery of software problems without needing to visit the problem location
- Easy to exchange necessary files and display end user PC screens, simplifying administrator resolution of remote PC problems
- Easy management of server at remote sites



7. Linkage with Active Directory

- Unified organizational and personnel information management using Microsoft Active Directory
- Can import Active Directory information into Systemwalker Desktop Patrol, and display end user PC and S/W information in the same tree-structured view as Active Directory



IV. Sample System Structure

(Components of Systemwalker Desktop Patrol)

■ **CS (Corporate Server)**

This server is responsible for the services that

1. define operation policy for distributing content,
2. define policy for collecting inventory information,
3. distribute those policies to each agent

■ **MC (Management Console)**

This is the console used to perform tasks such as managing distributed content and defining operational policy.

■ **DS (Domain Server)**

This server provides services for

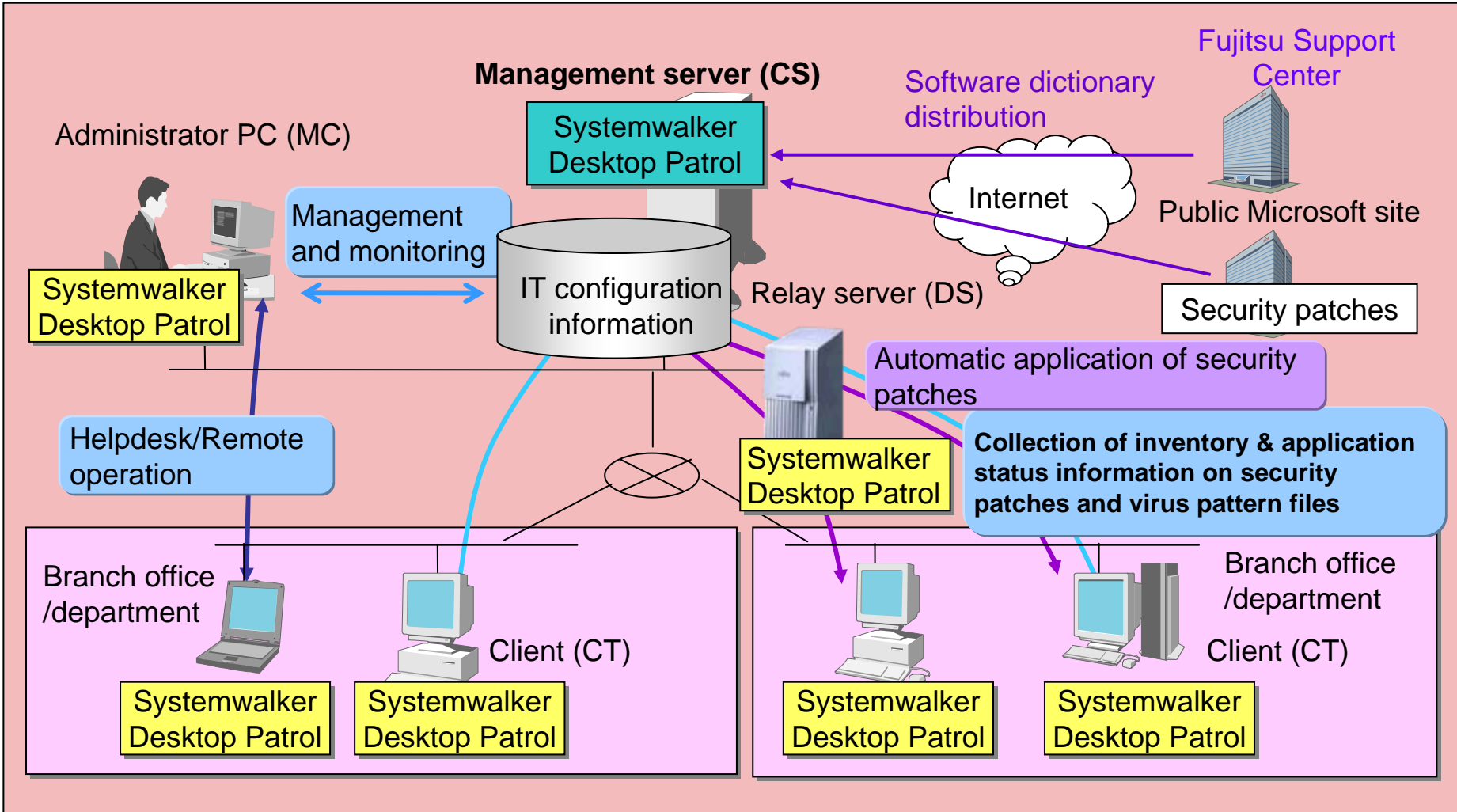
1. relaying and storing operational policies,
2. inventory information,
3. content distribution
4. other data collection and delivery

A relay server can be installed when relaying is necessary for load distribution

■ **CT (Client Terminal)**

This is a PC managed client. The client is installed on each PC whose assets are managed by inventory collection

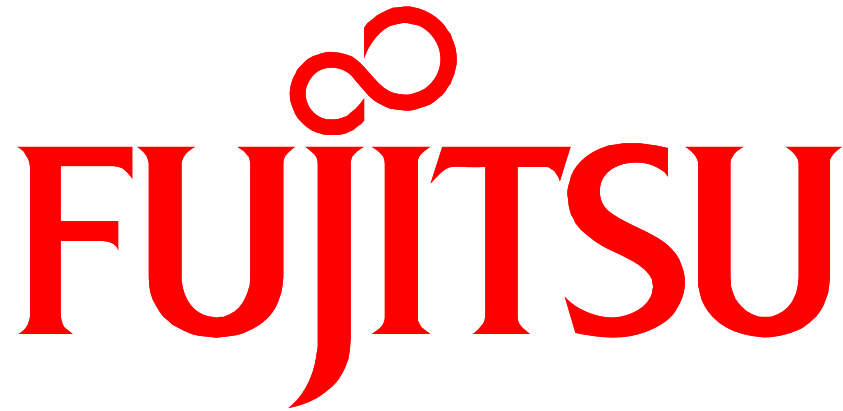
Sample System Structure



CS : Corporate Server MC : Management Console
 DS : Domain Server CT : Client Terminal

Registered Trademarks

- Systemwalker is a registered trademark of Fujitsu Limited.
- Windows, Windows95, Windows98, WindowsMe, WindowsXP, WindowsNT, and Windows2000 are registered trademarks of Microsoft Corporation in the United States and other countries.
- UNIX is a registered trademark of Open Group in the United States and other countries.
- Java and all Java-related trademarks and logos are trademarks or registered trademarks of Sun Microsystems, Inc., in the United States and other countries.
- ORACLE is a registered trademark of Oracle Corporation in the United States.
- Other company names and product names described in this document are trade names, trademarks, or registered trademarks of their respective holders.
- The trademark notices (™,©) are not necessarily appended to company, system, and product names described in this material.



THE POSSIBILITIES ARE INFINITE