

ETERNUS

Disk storage systems

ETERNUSmgr

Install Guide

for Windows®

ETERNUS

This page is intentionally left blank.

Preface

This installation guide explains how to install the "ETERNUSmgr for Windows" storage system management software on an ETERNUS DX400 series, ETERNUS DX8000 series, ETERNUS2000, ETERNUS4000, ETERNUS8000, ETERNUS3000, ETERNUS6000, (hereafter referred to as an "ETERNUS Disk storage system" or "device").

Follow the instructions in this guide to install "ETERNUSmgr for Windows".

Fourth Edition
October 2009

Content and Structure

This guide consists of the following two chapters and an appendix.

- Chapter 1 Installing ETERNUSmgr
This chapter describes how to install ETERNUSmgr.
- Chapter 2 Uninstalling ETERNUSmgr
This chapter describes how to uninstall ETERNUSmgr.

An appendix describes the "How to Set Up the Web Server", using the "Microsoft Internet Information Server" Web server as a typical example.

Abbreviations and Product Names used in this Manual

Microsoft® Windows® 2000 Server, and Microsoft® Windows® 2000 Advanced Server are collectively referred to as Windows® 2000.

Microsoft® Windows Server® 2003, Standard Edition, and Microsoft® Windows Server® 2003, Enterprise Edition are collectively referred to as Windows Server® 2003.

Microsoft® Windows Server® 2003 R2, Standard Edition, and Microsoft® Windows Server® 2003 R2, Enterprise Edition are collectively referred to as Windows Server® 2003 R2.

Furthermore, when no distinction is made, all of the above are collectively referred to as Windows®.

Java and all Java-related trademarks, and logos are trademarks and registered trademarks of Sun Microsystems, Inc. the United States and other countries.

Microsoft, Windows, and Windows Server are either registered trademarks or trademarks of Microsoft Corporation in the United States and/or other countries.

Netscape and Netscape Communicator are trademarks of Netscape Communications Corporation in the USA and other countries.

The company names, product names and service names mentioned in this document are registered trademarks or trademarks of their respective companies.

Screen shot(s) reprinted with permission from Microsoft Corporation.

Copyright 2009 FUJITSU LIMITED

Chapter 1	Installing ETERNUSmgr.....	6
1.1	ETERNUSmgr CD-ROM	6
1.2	Installation Outline	9
1.3	Supported Environment	9
1.4	Required Hardware/Software	10
1.5	Installation Notes	11
1.5.1	Web Server Installation and Setup	11
1.5.2	Web Directory and Web Directory Files	11
1.5.3	Editing the Top Menu File	12
1.5.4	Mail Server Installation and Setup	12
1.5.5	Re-installation of ETERNUSmgr	12
1.5.6	Installation of ETERNUSmgr on a Windows Server 2003 x64 Edition Server	12
1.6	Procedure	13
Chapter 2	Uninstalling ETERNUSmgr.....	22
Appendix A	How to Set Up the Web Server.....	23
Index	26

Chapter 1 Installing ETERNUSmgr

This chapter describes how to install ETERNUSmgr.

1.1 ETERNUSmgr CD-ROM

The files distributed on the ETERNUSmgr CD-ROM are listed below.

- \README_ja.TXT
- \README_en.TXT
- \bin\win\
- \bin\iso\ETERNUSV20L30.PKG
- \bin\hp\ETERNUSV20L30.HP
- \bin\aix\ETERNUSV20L30.AIX
- \bin\linux\FJSVgrmgr-V20L30-1.i386.rpm
- \doc\install\win\
- \doc\install\sol\
- \doc\install\hp\
- \doc\install\aix\
- \doc\install\linux\
- \doc\share\
- \doc\DX8000\
- \doc\E2000\
- \doc\E3000\
- \doc\E3000M50\
- \doc\E4000M80\
- \doc\E6000\
- \doc\E8000M700\
- \doc\E8000M800\

Each file and directory is briefly described below:

\README_ja.TXT

This file contains the CD-ROM list. (Japanese version)

\README_en.TXT

This file contains the CD-ROM list. (English version)

\bin\win

This folder contains the files needed to install ETERNUSmgr for Windows. Use the "SETUP.EXE" found in this folder to install these files.

\bin\sol\ETERNUSV20L30.PKG

This is the main ETERNUSmgr program for Solaris. It is the installation package for the "pkgadd" format.

\bin\hp\ETERNUSV20L30.HP

This is the main ETERNUSmgr program for HP-UX. This file is a compressed archive of the various files needed to run ETERNUSmgr. Unpack this file and use the "stxinst" installer to install these files.

\bin\aix\ETERNUSV20L30.AIX

This is the main ETERNUSmgr program for AIX. This file is a compressed archive of the various files needed to run ETERNUSmgr. Unpack this file and use the "stxinst" installer to install these files.

\bin\linux\FJSVgrmgr-V20L30-1.i386.rpm

This is the main ETERNUSmgr program for Linux. It is the installation package for the "rpm" format.

\doc

This directory contains various manuals. Files with "EN" in their name are English version manuals, while files without "EN" in their name are Japanese version manuals.

\doc\install\win

This directory contains the "ETERNUS Disk storage systems ETERNUSmgr Install Guide for Windows®" pdf files. These pdf files describe how to install ETERNUSmgr for Windows.

\doc\install\sol

This directory contains the "ETERNUS Disk storage systems ETERNUSmgr Install Guide for Solaris™ Operating System" pdf files. These pdf files describe how to install ETERNUSmgr for Solaris.

\doc\install\hp

This directory contains the "ETERNUS Disk storage systems ETERNUSmgr Install Guide for HP-UX" pdf files. These pdf files describe how to install ETERNUSmgr for HP-UX.

\doc\install\aix

This directory contains the "ETERNUS Disk storage systems ETERNUSmgr Install Guide for AIX" pdf files. These pdf files describe how to install ETERNUSmgr for AIX.

\doc\install\linux

This directory contains the "ETERNUS Disk storage systems ETERNUSmgr Install Guide for Linux" pdf files. These pdf files describe how to install ETERNUSmgr for Linux.

\doc\share

This directory contains the "ETERNUSmgr User Guide -Introduction-" pdf files. These pdf files describe ETERNUSmgr's monitoring and e-mail notification functions.

\doc\DX8000

This directory contains the "ETERNUS DX400/DX8000 series ETERNUSmgr User Guide - Settings/Maintenance-" pdf files. These pdf files show how to set up an ETERNUS DX400 series or ETERNUS DX8000 series configuration, and describe how to modify its settings and perform maintenance.

\doc\E2000

This directory contains the "ETERNUS2000 ETERNUSmgr User Guide -Settings/Maintenance- for models 100 and 200" pdf files. These pdf files show how to set up an ETERNUS2000 model 100 or 200 configuration, and describe how to modify settings and perform maintenance.

\doc\E3000

This directory contains the "ETERNUS3000 ETERNUSmgr User Guide -Settings/Maintenance- for models 80, 100, 200, 200M, 300, 300M, 400, 400M, 500, 500M, 600, 600M, 700, and 700M" pdf files. These pdf files show how to set up an ETERNUS3000 model 80, 100, 200, 200M, 300, 300M, 400, 400M, 500, 500M, 600, 600M, 700, or 700M configuration, and describe how to modify settings and perform maintenance.

\doc\E3000M50

This directory contains the "ETERNUS3000 ETERNUSmgr User Guide -Settings/Maintenance- for model 50" pdf files. These pdf files show how to set up an ETERNUS3000 model 50 configuration, and describe how to modify settings and perform maintenance.

\doc\E4000M80

This directory contains the "ETERNUS4000 ETERNUSmgr User Guide -Settings/Maintenance- for models 80 and 100" pdf files. These pdf files show how to set up an ETERNUS4000 model 80 or 100 configuration, and describe how to modify settings and perform maintenance.

\doc\E6000

This directory contains the "ETERNUS6000 ETERNUSmgr User Guide -Settings/Maintenance-" pdf files. These pdf files show how to set up an ETERNUS6000 configuration, and describe how to modify settings and perform maintenance.

\doc\E8000M700

This directory contains the "ETERNUS8000, ETERNUS4000 ETERNUSmgr User Guide -Settings/Maintenance-" pdf files. These pdf files show how to set up an ETERNUS8000 model 700, 900, 1100, or 2100, and ETERNUS4000 model 300 or 500 configuration, and describe how to modify settings and perform maintenance.

\doc\E8000M800

This directory contains the "ETERNUS8000, ETERNUS4000 ETERNUSmgr User Guide -Settings/Maintenance-" pdf files. These pdf files show how to set up an ETERNUS8000 model 800, 1200, or 2200, and ETERNUS4000 model 400 or 600 configuration, and describe how to modify settings and perform maintenance.

ETERNUSmgr software, "ETERNUSmgr Install Guide", and/or "ETERNUSmgr User Guide" may have been revised. The latest edition of each is available from the following site, and may be downloaded as necessary.

- ETERNUSmgr software
<http://www.fujitsu.com/global/support/computing/storage/system/>
- "ETERNUSmgr Install Guide" and "ETERNUSmgr User Guide"
<http://www.fujitsu.com/global/support/computing/storage/system/>

1.2 Installation Outline

Be sure to use the attached ETERNUSmgr installer ("SETUP.EXE") to install the ETERNUSmgr. This software cannot be installed by simple copying. Furthermore, "ETERNUSmgr" is registered as a service program, thus, you must have an "Administrator" account, or "Administrator" rights to perform the installation.

Check the following before installation.

- IP address (provided by customer) of the ETERNUS Disk storage system
- The e-mail address of the system administrator (when using the e-mail notification function)
- The folder name on the Web server for the ETERNUSmgr menu file
- The URL for viewing the folder name on the above server using a Web browser

After installation, refer to the "ETERNUSmgr User Guide -Introduction-" to perform the necessary settings.

For details about monitoring multiple target devices, refer to the "ETERNUSmgr User Guide -Introduction-".

1.3 Supported Environment

- Supported Operating Systems
 - Windows® 2000 Server
 - Windows® 2000 Advanced Server (Service Pack 3 or later)
 - Windows Server® 2003, Standard Edition
 - Windows Server® 2003, Enterprise Edition
 - Windows Server® 2003, Standard x64 Edition
 - Windows Server® 2003, Enterprise x64 Edition
 - Windows Server® 2003 R2, Standard Edition
 - Windows Server® 2003 R2, Enterprise Edition
 - Windows Server® 2003 R2, Standard x64 Edition
 - Windows Server® 2003 R2, Enterprise x64 Edition



Windows Server® 2003, Enterprise Edition for Itanium-based Systems is not supported.

- Supported Models
Refer to the specifications of each ETERNUS Disk storage system.

1.4 Required Hardware/Software

The following hardware/software is required in order to use "ETERNUSmgr".

- An Industry standard server with a Web server installed
 - The Web server must be installed before installing ETERNUSmgr.
 - Not restricted to any specific Web server. However, the Web server must have the capability to display the HTML format log file list. Therefore, the Web server that will be used must have the capacity to display the appropriate directories list.
- A client machine with the following software:
 - For ETERNUS2000, use:

Software type	Software name	Remarks
Web Browser	<ul style="list-style-type: none"> • Microsoft® Internet Explorer 6.0 or later • Mozilla Firefox™ 1.5.0.10 or later • Netscape 7.1 or later (Windows® environment) 	Any of these web browser may be used.
Java Runtime Environment	<ul style="list-style-type: none"> • Java Runtime Environment 5.0 Update 11 or later • Java Runtime Environment 6.0 Update 3 or later 	Either version may be used.

- For ETERNUS GR series and ETERNUS3000 model 50, use:

Software type	Software name	Remarks
Web Browser	<ul style="list-style-type: none"> • Microsoft® Internet Explorer 5.5 + Service Pack2 or later • Netscape Communicator 4.5 or later 	Either web browsers may be used.

- For ETERNUS3000 (except model 50), and ETERNUS4000 models 80 and 100, use:

Software type	Software name	Remarks
Web Browser	<ul style="list-style-type: none"> • Microsoft® Internet Explorer 6.0 + Service Pack1 or later • Netscape 6.0 or later (Windows® environment) 	Either web browsers may be used.

- For ETERNUS DX400 series, ETERNUS DX8000 series, ETERNUS4000 models 300, 400, 500, and 600, and ETERNUS8000, use:

Software type	Software name	Remarks
Web Browser	<ul style="list-style-type: none"> • Microsoft® Internet Explorer 6.0 + Service Pack2 • Microsoft® Internet Explorer 7.0 • Netscape 6.0 or later (Windows® environment) 	Any of these web browser may be used.

- For ETERNUS6000, use:

Software type	Software name	Remarks
Web Browser	<ul style="list-style-type: none">• Microsoft® Internet Explorer 6.0 or later• Netscape 6.0 or later (Windows® environment)	Either web browsers may be used.

When a Web browser other than the ones listed above or an older version Web browser is used, the screen display may be abnormal.

- Mail server

Mail Server	<ul style="list-style-type: none">• A UNIX server supporting SMTP protocol, with "Sendmail" installed (including Linux server)• A Windows® supporting a standard SMTP service
-------------	--

A mail server is not required if you do not use the ETERNUSmgr e-mail notification function.

It is presumed that the LAN route between the ETERNUSmgr-installed server and the mail server can communicate by SMTP. Note that if a router, firewall, etc. along the LAN route blocks the SMTP port, the ETERNUSmgr e-mail notification function may not operate normally.

1.5 Installation Notes

1.5.1 Web Server Installation and Setup

To install the Web server, follow the procedures appropriate to the given software. For the Web server, setup the following two public directories.

- ETERNUSmgr Top Menu Directory
- ETERNUSmgr Alarm History Files Directory

The Web server must be set to allow the contents of the Alarm History Files Directory to be displayed. Note also that in the setup file (default filename "STXPOLL_1.INI") the HTML_ALARMFILE_PATH parameter must be set to the Alarm History Files Directory.



The alarm history files must be saved in a folder immediately under the folder in which the ETERNUSmgr Top Menu is installed.

See "ETERNUSmgr User Guide -Introduction-" for the details of the setup file.

1.5.2 Web Directory and Web Directory Files

Files in the Web folder (may be changed at installation) created in the installation folder are ETERNUSmgr screen files (top menu files). Copy the edited top menu ("menu.htm") and other related files to an appropriate folder on the Web server containing the menu.

Note that the files need not be copied when the folder specified at installation is used and changed as the location for the top menu, however if the menu is to be edited the top menu should be saved under another name.

1.5.3 Editing the Top Menu File

As the ETERNUSmgr changes the content of the top menu ("menu.htm") in accordance with the device's status at ETERNUSmgr start-up, do not overwrite or open the top menu with an editor during ETERNUSmgr start-up. Always terminate ETERNUSmgr before making any changes to the top menu.

1.5.4 Mail Server Installation and Setup

When using the ETERNUSmgr e-mail notification function, a server must be provided separately as the server to run a mail server such as Sendmail, and the settings required for mail transmission must be made in advance. Install Sendmail, or other mail server, and perform the required settings according to the respective hardware and software procedures.

The ETERNUSmgr e-mail notification function is executed by standard SMTP protocol. SMTP authentication (SMTP AUTH), SMTP over TLS, etc. are not supported.

1.5.5 Re-installation of ETERNUSmgr

If ETERNUSmgr or GRmgr is already installed in a server where you want to install ETERNUSmgr, uninstall the previous ETERNUSmgr or GRmgr before installing ETERNUSmgr. ETERNUSmgr is compatible with GRmgr V10L30 or later regarding logical operation, data files, log files, etc. (it is not compatible with GRmgr V10L20 or earlier). ETERNUSmgr can use setting file of GRmgr V10L30 or later. Before uninstalling GRmgr, make a backup of any setting or log files, if necessary. For details, refer to "ETERNUSmgr compatibility with GRmgr" in "Chapter 5 Cautions" in "ETERNUSmgr User Guide -Introduction-".

1.5.6 Installation of ETERNUSmgr on a Windows Server 2003 x64 Edition Server

When ETERNUSmgr is installed on a Windows Server® 2003 x64 or Windows Server® 2003 R2 x64 server, do not change the default installation directory "C:/Program Files(x86)/Fujitsu/ETERNUSmgr" (program folder for 32-bit application) to "C:/Program Files/Fujitsu/ETERNUSmgr" (program folder for 64-bit application). If changed, ETERNUSmgr will not be installed correctly.

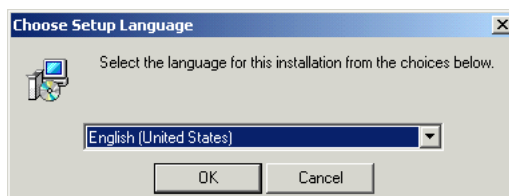
If another directory is specified, no problems will occur.

1.6 Procedure

This describes how to install ETERNUSmgr.

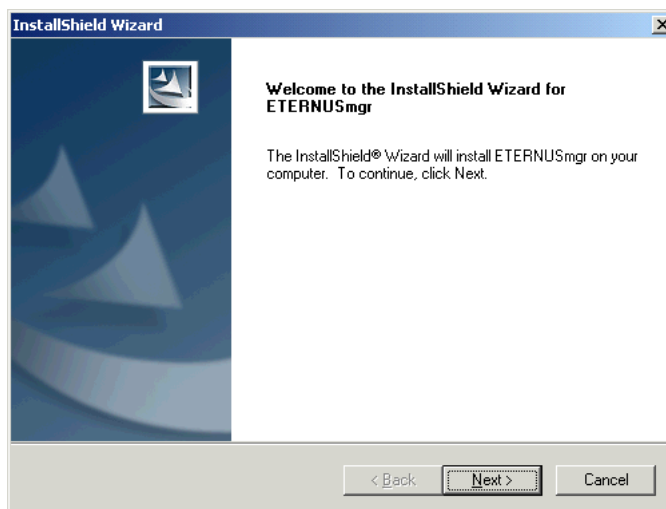
Procedure

- 1 Using "Explorer" etc., double-click the "\bin\win\SETUP.EXE" (ETERNUSmgr installer) included on the CD-ROM, to start installation.
→ A screen to choose the setup language will appear.
- 2 Select the language (Japanese or English) to be used at installation and click on [OK].



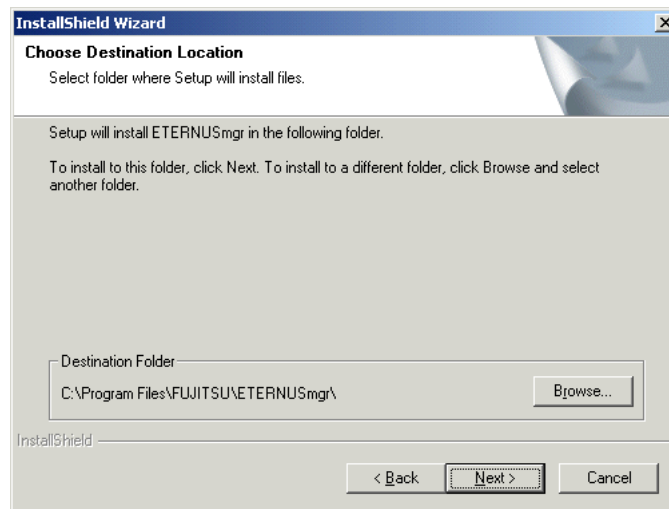
→ The [InstallShield Wizard] screen will appear.

- 3 Read the displayed message and click the [Next] button.

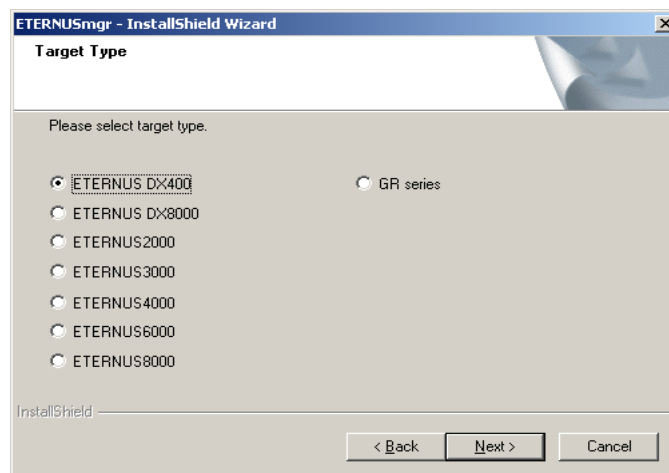


→ A folder name will be displayed as destination folder.

- Click the [Next] button to use the displayed destination folder.
To install to a different folder, click the [Browse] button and select another folder.

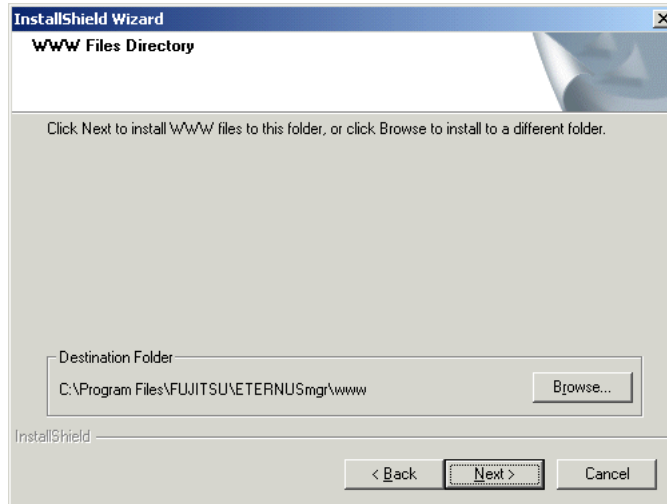


- Select the type of target device and click the [Next] button.
The character string for the selected device is assigned to the "TARGET_TYPE" parameter in the setup file ("STXPOLL_1.INI"), while a device type flag (1=ETERNUS3000/GR710/GR720/GR730, 2=ETERNUS6000/GR740/GR820/GR840, 4=ETERNUS DX400 series/ETERNUS DX8000 series/ETERNUS2000/ETERNUS4000/ETERNUS8000) is assigned to the "TARGET_FLAG" parameter.
For an ETERNUS DX410/DX440, select "1" (=ETERNUS DX400 series). For an ETERNUS DX8100/DX8400/DX8700, select "2" (=ETERNUS DX8000 series).

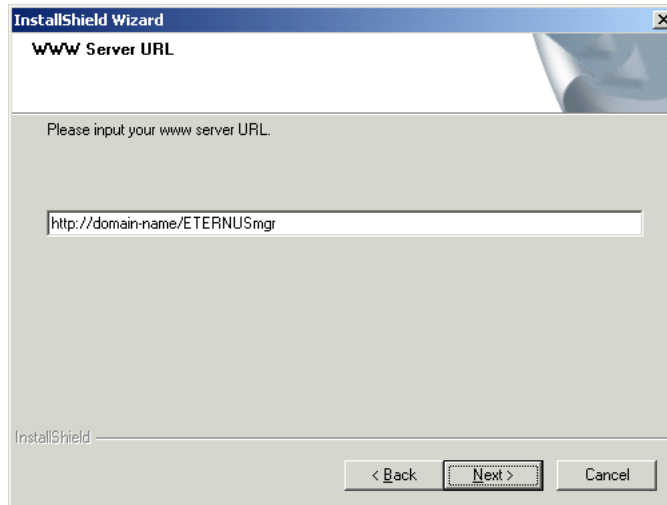


- Enter the name of the folder in which ETERNUSmgr Top Menu is to be installed, and click the [Next] button.
 - To use the default folder
Click the [Next] button.
(The default folder is the "www" folder under the ETERNUSmgr installation folder.)

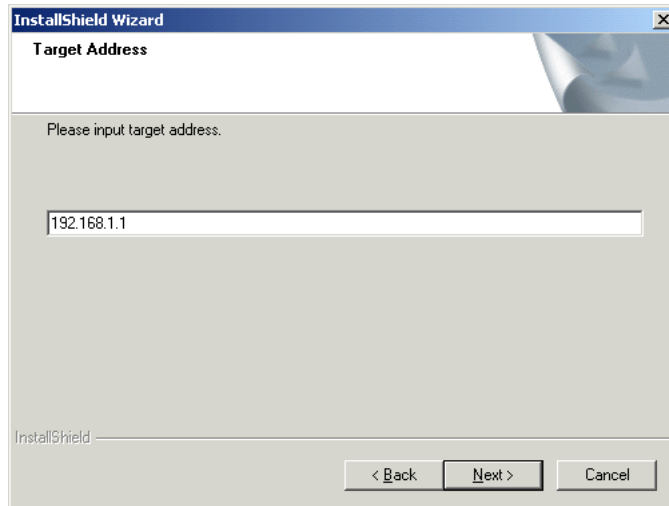
- To change the installation folder
Click the [Browse] button and specify a folder from which access to the Web is possible.
Note that the drive name must be included in the top menu's installation folder.



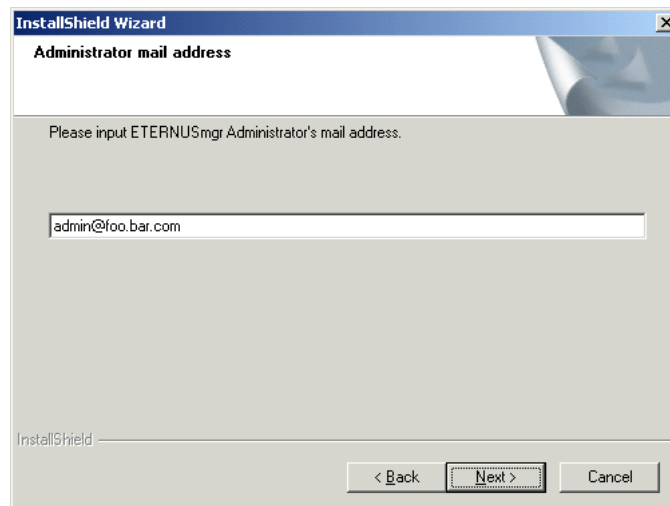
- 7 Specify URL and click the [Next] button.
Enter the URL for the folder in which ETERNUSmgr Top Menu is located. (This URL is assigned to the ETERNUSmgr Top Menu directory by the Web server settings.)
Enter the URL starting with "http://" and finishing with the alias name.



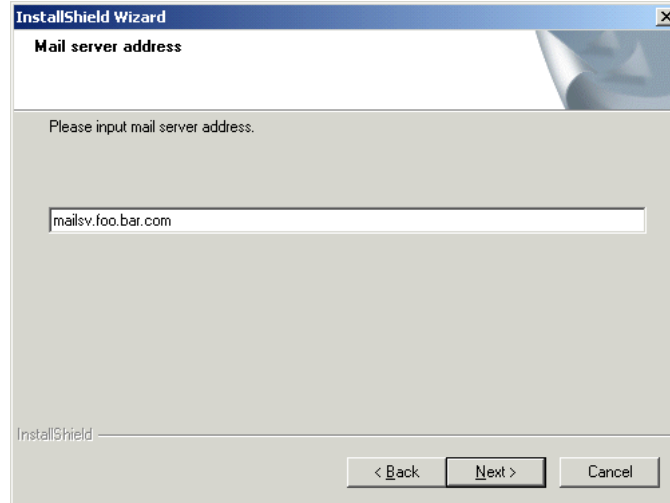
- 8 Enter the Target Address allocated to the device, and click the [Next] button.
The value entered here is set to the "TARGET_ADDR" parameter of the "STXPOLL_1.INI" file. Specify the IP address of the SVP when using SVP with the ETERNUS6000.



- 9 Set the ETERNUSmgr e-mail notification function.
When the e-mail notification function is not to be used, do not enter anything and click the [Next] button.
When the ETERNUSmgr e-mail notification function is to be used, set as follows:
 - a Enter the ETERNUSmgr Admin Mail Address and click the [Next] button.
ETERNUSmgr will send messages to the mail address entered here when a change of status occurs in the device.
The value entered here is set to the "ADMIN_MAIL" parameter in the "STXPOLL_1.INI" file.



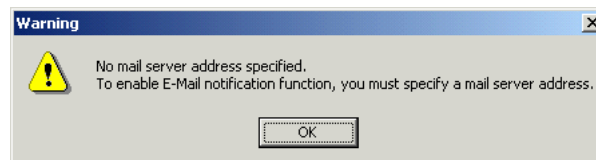
- b Enter the Mail Server Address that is to receive the notification mail sent by ETERNUSmgr and click the [Next] button. ETERNUSmgr will send the notification mail to the mail server entered here. The value entered here is set to the "ADMIN_MAILSV" parameter in the "STXPOLL_1.INI" file.



→ The information entered in the previous steps is displayed.

Caution

When using the ETERNUSmgr e-mail notification function, you must specify the Mail Server Address here. If you omit the Mail Server Address and click the [Next] button, the following message will appear and the Mail Server Address entry screen is returned to. The information entered in the previous steps is displayed.



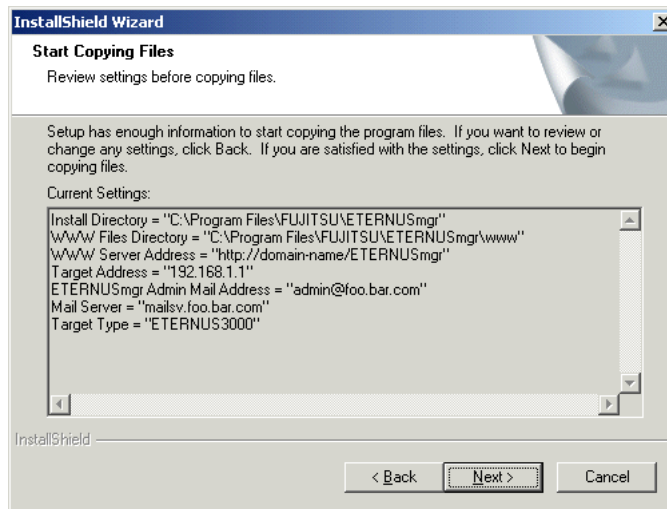
When not using the ETERNUSmgr e-mail notification function, click the [Back] button to return to the Mail Server Address entry screen, delete the mail address already entered, and click the [Next] button.

If the mail settings are correct, ETERNUSmgr sends an e-mail which includes the following message to the administrator when ETERNUSmgr is started.

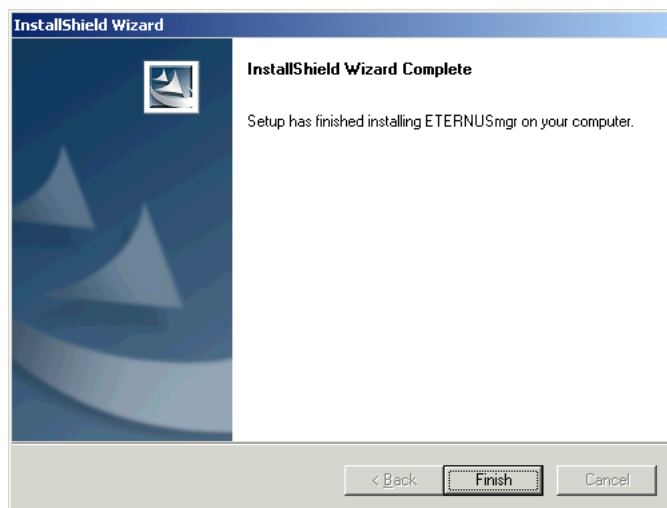
```
"ETERNUSmgr VxxLxx - HTTP Polling engine was started."  
*VxxLxx refers to the version/level number.
```

If no e-mail is sent to the administrator when ETERNUSmgr is started, the mail settings are incorrect. Check whether the contents of the setup file are correct, and if there are any problems in the transmission link. Refer to "Chapter 3 Startup and Shutdown" in "ETERNUSmgr User Guide -Introduction-" for details of starting ETERNUSmgr.

10 Check that the settings are correct and click the [Next] button.



11 When a message appears indicating that installation is complete, click the [Finish] button.



→ This completes the installation.

End of procedure

The ETERNUSmgr installer copies the necessary files to the specified installation folder. See the "ETERNUSmgr User Guide -Introduction-" for details on how to setup ETERNUSmgr for operation.

The installer enters the following parameters from the information entered in the steps above in the setup file ("STXPOLL_1.INI").

- Target Type
 - # Polling Server Type
 - TARGET_TYPE = Target Type as specified in [Step 5](#) (Name)

- Target Flag
 - # Polling Server Flag
 - TARGET_FLAG = Device type flag specified in [Step 5](#)
 - (1=ETERNUS3000, GR710, GR720, GR730, 2=ETERNUS6000, GR740, GR820, GR840, 4=ETERNUS DX400 series, ETERNUS DX8000 series, ETERNUS2000, ETERNUS4000, ETERNUS8000)
 - If "1=ETERNUS DX400" was selected in [Step 5](#), then "TARGET_TYPE=ETERNUS DX400".
 - If "2=ETERNUS DX8000" was selected in [Step 5](#), then "TARGET_TYPE=ETERNUS DX8000".
 - The target type name can be modified post-installation.
- Target Address
 - # Polling Server Address
 - TARGET_ADDR = Target Address specified in [Step 8](#)
- Alarm History Files Directory
 - # HTML File Save PATH
 - HTML_ALARMFILE_PATH = Folder name specified in [Step 6](#) followed by "/html_1"
- Alarm History Index URL
 - # HTTP Server Address
 - HTML_ALARMFILE_URL = URL specified in [Step 7](#) followed by "/html_1"
- Log Files Directory
 - # Log File Saved PATH
 - LOGFILE_PATH = Folder name specified in [Step 4](#) followed by "log_1"
- Admin Mail Address
 - # Admin Mail Address
 - ADMIN_MAIL = Mail address specified in "[a](#)" of [Step 9](#)
- Mail Server Address
 - # Mail Server
 - ADMIN_MAILSV = Mail Server Address specified in "[b](#)" of [Step 9](#)

The parameters of the setup file can be edited after installation.

Upload the ETERNUSmgr Top Menu installation folder specified in [Step 6](#) to the Web server. For information on how to perform these settings, refer to the Web server manual for further details. The URL (specified in [Step 7](#)) for the folder in [Step 8](#) appears in the top menu ("menu.htm") and the Alarm History Index URL is automatically embedded.

For further details about the menu file, read the section below, or refer to "4.1 Top Menu" of the "ETERNUSmgr User Guide -Introduction-".

The following files are installed to the specified installation folder.

- stxpoll.exe
- _stxpoll.ini
- STXPOLL_1.INI
- STXPOLL.exe
- www\index.htm (NOTE)
- www\menu.htm (NOTE)
- www\fujitsu.gif, www\eternus.gif (NOTE)
- stxsmail.exe

NOTE) The above files are installed to the ETERNUSmgr Top Menu installation folder, specified in [Step 6](#).

The following explains each file:

stxpoll.exe

This contains the main contents of the "ETERNUSmgr" program.

_stxpoll.ini, STXPOLL_1.INI

STXPOLL_1.INI is a setup file of ETERNUSmgr.

These setup files are created during installation. If necessary, a text editor such as Notepad, etc. can be used to edit these settings.

_stxpoll.ini file is a template file.

Caution

Refer to the "ETERNUSmgr User Guide -Introduction-" when editing these setup files. Edit only parameters described in the guide. Do not delete comments or blank lines in the setup files during installation, and do not add anything other than parameters. Failure to follow these instructions may hinder performance and cause problems during future upgrades.

The following format should be used for the file names of the Windows® setup files.

Format :	STX~.INI
----------	----------

If a file name is in a format other than specified above, ETERNUSmgr will not be able to find the file. The only place the setup file can be saved is the installation folder. If saved to another folder, the STXPOLL service cannot recognize where the setup files are saved.

Caution

The "STX~.INI" file name format must never be given to non-setup files in the installation directory since, whether they are setup files or not, ETERNUSmgr will attempt to read all such "STX~.INI" files, with unforeseeable and potentially fatal results. If you want to make backup files, save them with a different file name format, or save them outside of the installation directory to prevent ETERNUSmgr from attempting to use them.

ETERNUSmgr allows multiple setup files to be stored in the installation folder, so error monitoring can be carried out for the specified devices using the respective files. However, multiple monitoring settings cannot be made for one device.

If multiple setup files for the same device are detected, a warning message will appear and ETERNUSmgr will not start up.

For further details, refer to "2.5 Monitoring Multiple Target Devices" in the "ETERNUSmgr User Guide -Introduction-".

STXPOLL.exe

Service program for starting/stopping ETERNUSmgr. This program runs as a service, and starts up and shuts down the "stxpoll.exe" program as required.

www\index.htm

This file contains the initial screen. After 5 seconds, it automatically jumps to the ETERNUSmgr Top Menu.

To use this file, copy it to a folder under the Web server where the top menu is stored.

During installation, there is no need to copy this file to the specified folder under the top menu if the default folder is used.

www\menu.htm

This file contains ETERNUSmgr Top Menu.

To use this file, copy it to a folder under the Web server where the top menu is stored.

During installation, there is no need to copy this file to the specified folder under the top menu if the default folder is used. In this case, make a backup of this file ("menu.htm") and save it under a different name.

www\fujitsu.gif, www\eternus.gif

These are the images used by the ETERNUSmgr screens.

To use them, copy them to a folder under the Web server where the top menu is stored.

During installation, there is no need to copy these files to the specified folder under the top menu if the default folder is used.

stxsmail.exe

This file contains the program for sending mail to the administrator(s) from ETERNUSmgr. Do not alter, move or delete this program.

Caution

- The "www\index.htm," "www\menu.htm," "www\fujitsu.gif," and "www\eternus.gif" files must be copied to the same folder under the Web server where ETERNUSmgr Top Menu is stored.
 - Always perform the copy operation stated above when ETERNUSmgr is in a stopped state. In addition, if the copy destination of the "www\index.htm," "www\menu.htm," "www\fujitsu.gif," and "www\eternus.gif" files is different from installation folder, make sure to copy them to the same folder, edit all setup files ("STX~.INI"), and specify the copy destination for "HTML_ALARMFILE_PATH". Also, set the link to the alarm file for each device described under "Show hardware error detect log list" in the top menu ("menu.htm") to be the same as the setup file's "HTML_ALARMFILE_PATH".
-

See "ETERNUSmgr User Guide -Introduction-" for the procedures for editing individual files.

Chapter 2 Uninstalling ETERNUSmgr

This chapter describes how to uninstall ETERNUSmgr.

Procedure

1 Uninstall ETERNUSmgr.

Select an OS listed below and perform the following:

- For Windows® 2000
For Windows® 2000, display the [Control Panel], click [Add/Remove Programs], select [ETERNUSmgr], and click the [Change or Remove] button.
- For Windows Server® 2003 and Windows Server® 2003 R2
For Windows Server® 2003 and Windows Server® 2003 R2, display the [Control Panel], click [Add/Remove Programs], select [ETERNUSmgr], and click the [Change or Remove] button.

→ The message "Do you want to remove "ETERNUSmgr" and all components?" will appear.

2 Click [OK].

→ This will uninstall ETERNUSmgr.

End of procedure

Appendix A How to Set Up the Web Server

In addition to installing ETERNUSmgr, your Web server may need to be appropriately set up to enable faults to be monitored and the device status displayed using a Web browser.

Note

- The example introduced here is for "Microsoft® Internet Information Server" provided with Windows® 2000 Server, Windows Server® 2003, and Windows Server® 2003 R2 (hereafter collectively called "IIS"), which can be used as the Web server. The folder configuration to be installed and how to setup the IIS sometimes vary according to the version of IIS. If you are using an OS that is different from that shown in this example, interpret the relevant items as appropriate.
- ETERNUSmgr is not dependent on Web server type. However, the Web server should have the capability to display an appropriate directory list for an HTML format log file list. Also, ETERNUSmgr does not recommend or guarantee use of IIS as the Web server.
- For details on how to install the Web server or the setup method, refer to the relevant documents (User's Manual of the Web server you are using, etc.).

Example 1

Setting up the ETERNUSmgr Top Menu folder as the Web server top public directory (root) when installing ETERNUSmgr using the default settings.

[Assumptions]

- IIS is already installed under the following directory configuration
 Root path for IIS HTML document : "C:\inetpub\wwwroot"
- ETERNUSmgr is installed under the following settings
 Directory of top menu : "C:\Program Files\FUJITSU\ETERNUSmgr\www"
 URL for above directory : "http://(Web server name. domain name)"/"

[Web server setup procedure]

Procedure

- 1 As an administrator, login to the Windows® on which ETERNUSmgr and IIS are already installed.
- 2 From the [Start] menu, click [Settings] - [Control Panel] - [Administrative Tools] - [Internet Services Manager].
- 3 Right click [Default Website] and the [Properties] screen will appear.

- 4 Select the [Home Directory] tab, click [Browse], and specify the ETERNUSmgr Top Menu directory ("C:\Program Files\FUJITSU\ETERNUSmgr\www") in the [Local Path] column.
- 5 Mark the [Directory Browsing] checkbox.
- 6 Select the [Documents] tab, click [Add], and enter "index.htm".
- 7 Close all windows.

End of procedure



Note

The above settings are enabled immediately after they are changed. So, there is no need to reboot the IIS.

■ Example 2

Setting up the ETERNUSmgr Top Menu folder as a Web server public directory ("/ETERNUSmgr") when installing ETERNUSmgr using the default settings.

[Assumptions]

- IIS is already installed under the following directory configuration
Root path for IIS HTML document : "C:\inetpub\wwwroot"
- ETERNUSmgr is installed under the following settings
Directory of top menu : "C:\Program Files\FUJITSU\ETERNUSmgr\www"
URL for above directory : "http://(Web server name. domain name)/ETERNUSmgr"

[Web server setup procedure]

Procedure

- 1 As an administrator, login to the Windows® on which ETERNUSmgr and IIS are already installed.
- 2 From the [Start] menu, click [Settings] - [Control Panel] - [Administrative Tools] - [Internet Services Manager].
- 3 Right click [Default Website] and click [New] - [Virtual Directory].
- 4 Click the [Next] button and specify the path included in the URL ("ETERNUSmgr") in the [Alias] column.
- 5 Click [Next] - [Browse], and specify the ETERNUSmgr Top Menu directory ("C:\Program Files\FUJITSU\ETERNUSmgr\www") in the [Directory] column.
- 6 Click the [Next] button.
- 7 Click the [Next] button to complete the alias setting.

- 8 Right click the created alias ("ETERNUSmgr") to display the [Properties] screen, click the [Virtual Directory] tab, and mark the [Directory Browsing] checkbox.
- 9 Select the [Documents] tab, click [Add], and enter "index.htm".
- 10 Close all windows.

End of procedure



Note

The above settings are enabled immediately after they are changed. So, there is no need to reboot the IIS.

■ Example 3

Setting up the ETERNUSmgr Top Menu in the previously used Web server public directory when installing ETERNUSmgr.

[Assumptions]

- IIS is already installed under the following directory configuration
Root path for IIS HTML document : "C:\inetpub\wwwroot"
- ETERNUSmgr is installed under the following settings
Directory of top menu : "C:\inetpub\wwwroot\ETERNUSmgr"
URL for above directory : "http://(Web server name. domain name)/
ETERNUSmgr"

[Web server setup procedure]

Procedure

- 1 As an administrator, login to the Windows® on which ETERNUSmgr and IIS are already installed.
- 2 From the [Start] menu, click [Settings] - [Control Panel] - [Administrative Tools] - [Internet Services Manager].
- 3 Right click [Default Website] to display the [Properties] screen, select the [Home Directory] tab, then mark the [Directory Browsing] checkbox.
- 4 Select the [Documents] tab, click [Add], and enter "index.htm".
- 5 Close all windows.

End of procedure



Note

The above settings are enabled immediately after they are changed. So, there is no need to reboot the IIS.

A

Admin Mail Address	19
Alarm History Files	11
Alarm History Files Directory	19
Alarm History Index URL	19

C

CD-ROM Contents	6
-----------------------	---

I

Initial Screen	21
Installation Notes	11
Installation Outline	9
Installation Procedure	13
Installing ETERNUSmgr	13

L

Log Files Directory	19
---------------------------	----

M

Mail Server	11
-------------------	----

R

Required Hardware/Software	10
----------------------------------	----

S

Service Program	20
Setup File	18, 20
STXPOLL.exe	20
stxsmail.exe	21
Supported Environment	9
Supported Models	9
Supported Operating Systems	9

T

Target Address	19
Target Flag	19
Target Type	18
Top Menu Directory	11

U

Uninstalling ETERNUSmgr	22
-------------------------------	----

W

Web Browser	10, 11
www\eternus.gif	21
www\fujitsu.gif	21
www\index.htm	21
www\menu.htm	21


ETERNUS Disk storage systems ETERNUSmgr Install Guide
for Windows®

P2WW-1632-04ENZO

Date of issuance: October 2009

Issuance responsibility: FUJITSU LIMITED

-
- The contents of this manual are liable to being updated without notice.
 - While the contents of this manual are the product of all due care and diligence, no responsibility can be accepted for operational problems arising from any errors or missing information, or other use of the information contained in this manual.
 - Fujitsu assumes no liability for damages to third party copyrights or other rights arising from the use of any information in this manual.
 - Contents of this manual are not to be reproduced without permission from Fujitsu.


FUJITSU