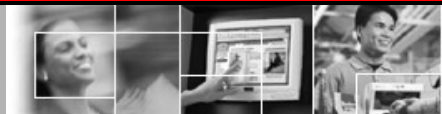


Retail Platform Software Support



***TeamPoS3000* XL Cash Drawer and POS Power
Software Load Instructions**

Issue 1.00
May 1, 2006
Status: Release
Channels: ALL
Author: TAH



***TeamPoS® 3000* XL
Cash Drawer and POS Power
Software Load Instructions**

This document and the information contained herein are distributed by Fujitsu Transaction Solutions Inc. ("Fujitsu") to the recipient for the purpose of facilitating business transactions with Fujitsu.

Fujitsu endeavors to ensure that the information in this document is accurate and complete at the time of printing, but does not accept liability for any error or omission.

Table of Contents

1. Overview	3
2. Installing the Cash Drawer Driver (COM10)	4
3. Installing the POS Power Device Driver (COM30)	10
4. Installing the Cash Drawer and Power I/O Device Driver	16
5. Uninstalling the Cash Drawer and POS Power Drivers	20

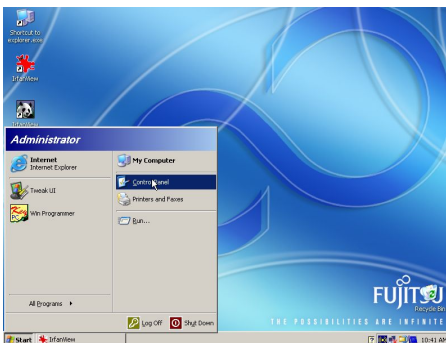
1. Overview

This document guides the installation of the software needed to access the *TeamPoS3000* XL Cash Drawer and POS Power functionality. The Cash Drawer and POS Power are accessed via the GPIO chip on the motherboard. These devices are not automatically identified by the operating system by “Found New Hardware”. Software installation and COM port setup must be initiated via “Add Hardware” in the “Control Panel”.

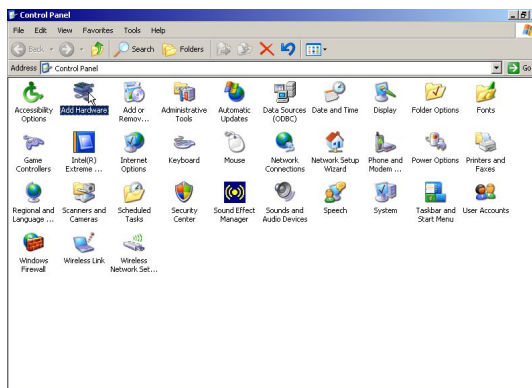
The process is as follows:

1. Use the “Add Hardware” icon in the “Control Panel” to define the “Fujitsu Cash Drawer Port (COM10)”. This process will need the .INF and .SYS files provided for the cash drawer.
2. Use the “Add Hardware” icon in the “Control Panel” to define the “Fujitsu POS Power Port (COM30)”. This process will need the .INF and .SYS files provided for the POS power.
3. Run the Cash Drawer and POS Power “Setup” program to install the device service that manages access to the *TeamPoS3000* XL Cash Drawer and POS Power hardware via COM10 and COM30 virtual com ports.

2. Installing the Cash Drawer Driver (COM10)



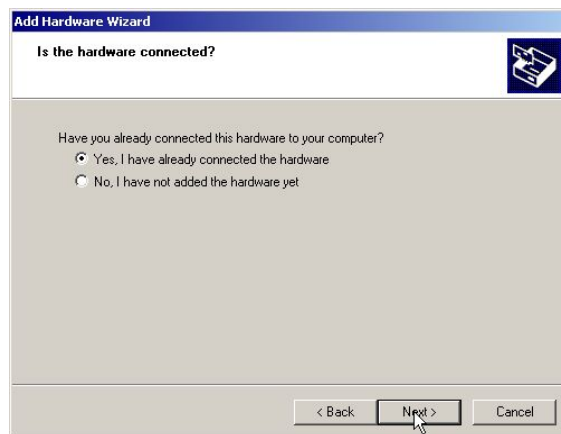
- Select the “*Start*” icon on the task bar and then select the “*Control Panel*”.



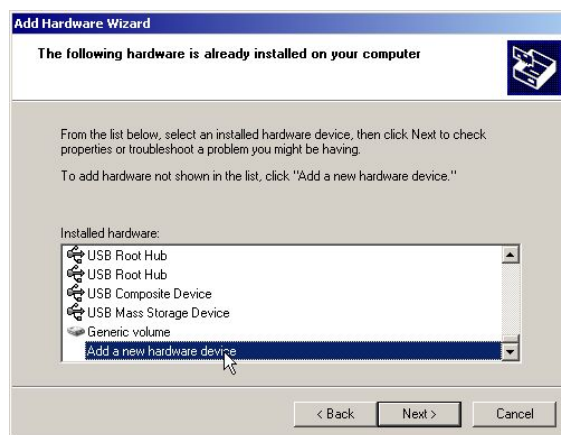
- Select the “*Add Hardware*” icon.



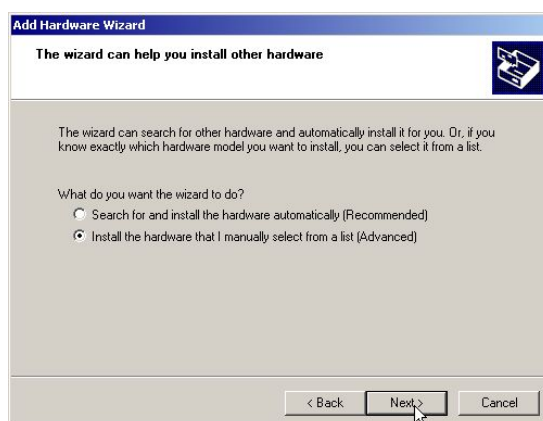
- Select “*Next*”



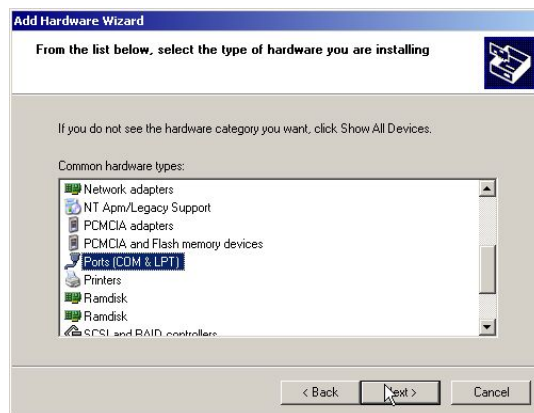
- Select “Yes, I have already connected the hardware” and then select “Next”



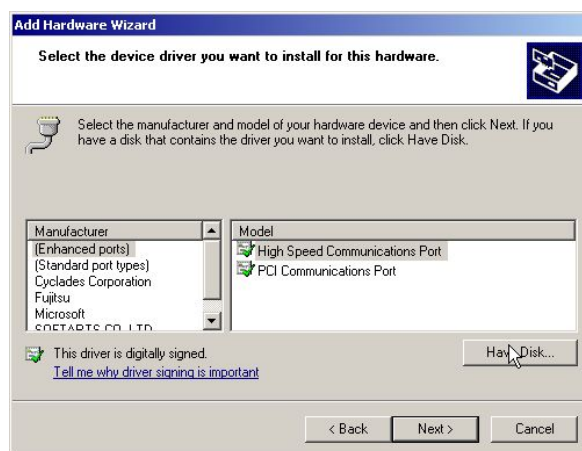
- Scroll down and select “Add a new hardware device” and select it. Then select “Next”



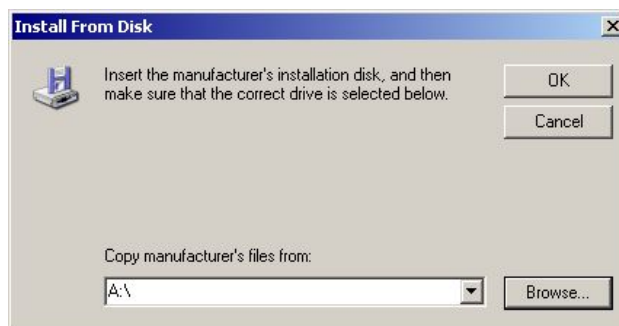
- Select “Install the hardware that I manually select from a list (Advanced)” and then select “Next”.



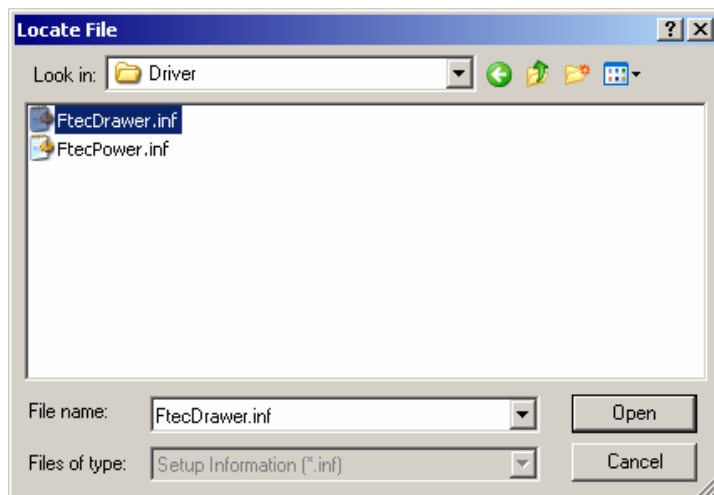
- Scroll down and select “*Ports (COM & LPT)*” and then select “*Next*”.



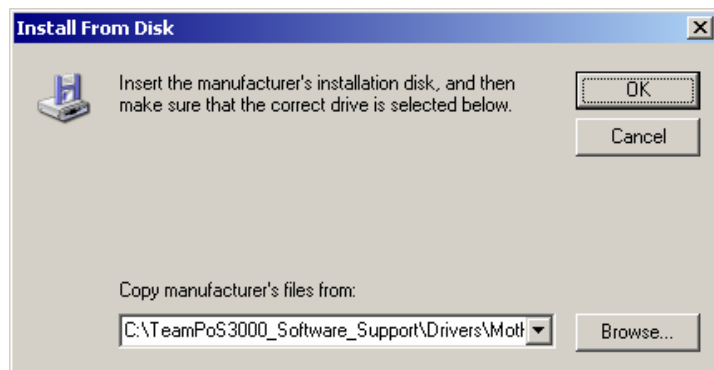
- Select “*Have Disk*”.



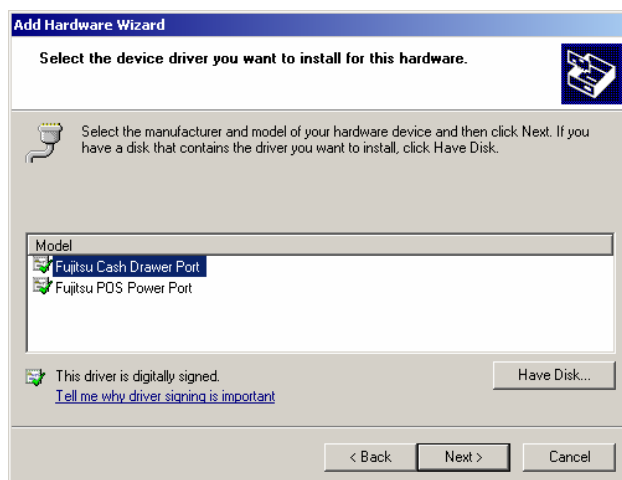
- Browse to the folder that contains the *TeamPoS3000 XL Cash Drawer Virtual COM driver* and then select “*OK*”.



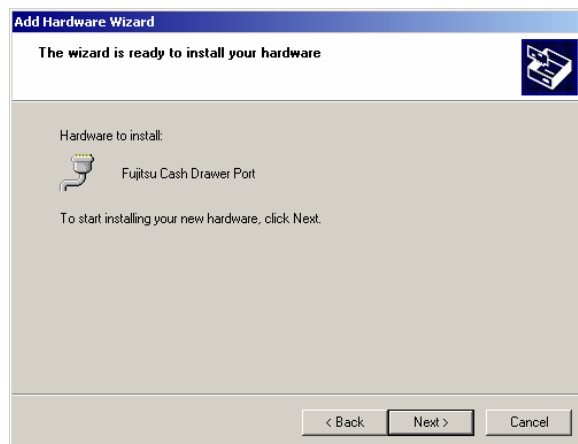
- Select "*FtecDrawer.inf*" and then select "Open".



- Select "OK".



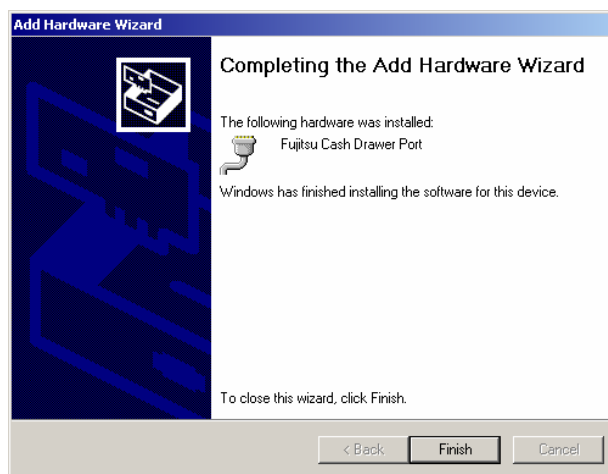
- Select "*Fujitsu Cash Drawer Port*" and then "Next".



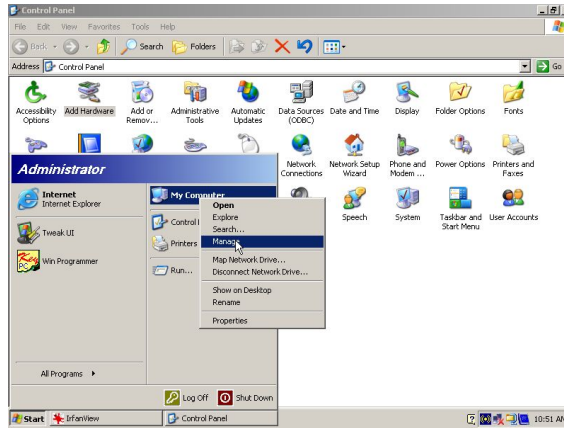
- Select “Next” to begin loading the software.



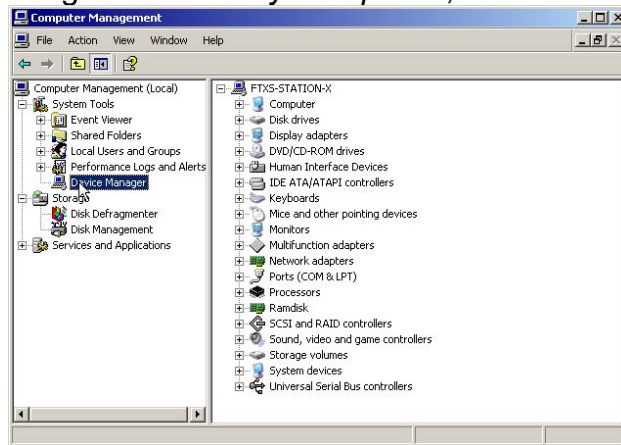
- Select “Continue Anyway”.



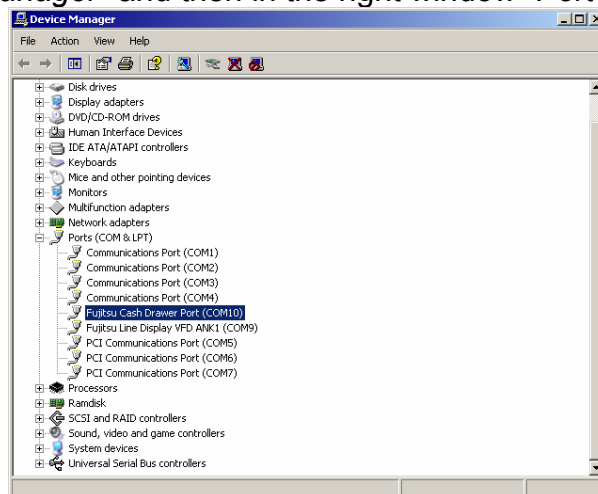
- Select “Finish” to complete the COM10 driver installation.



- Select “Start”, then right-click on “My Computer”, and then select “Manage”.

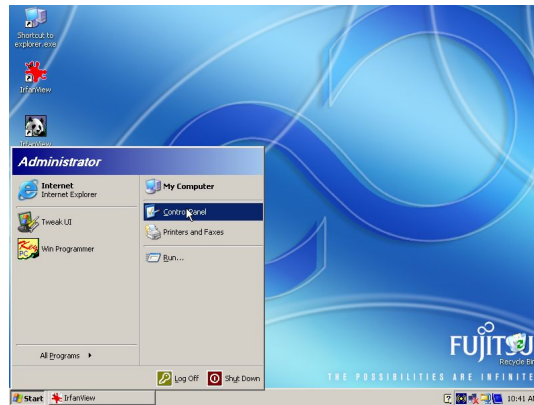


- Select “Device Manager” and then in the right window “Ports (COM & LPT)”.

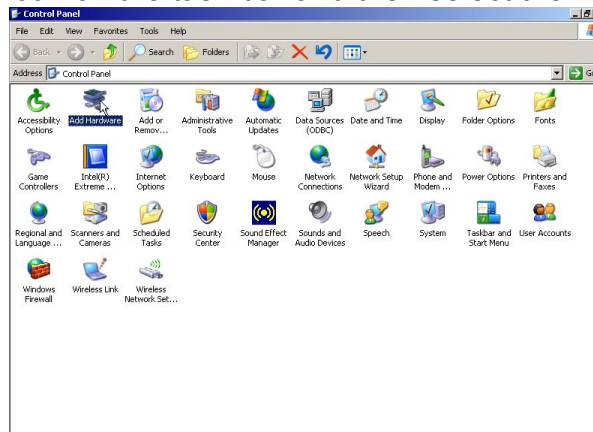


- Confirm "Fujitsu Cash Drawer Port" (COM10) has been defined.

3. Installing the POS Power Device Driver (COM30)



- Select the “Start” icon on the task bar and then select the “Control Panel”.



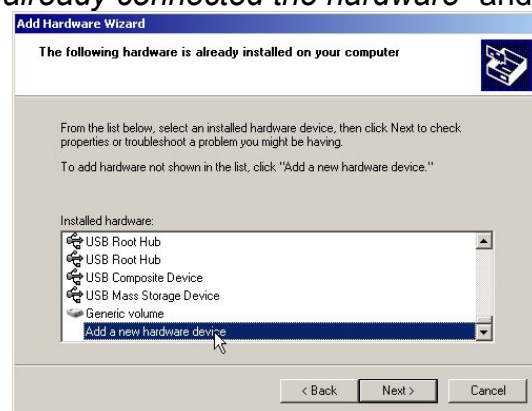
- Select the “Add Hardware” icon.



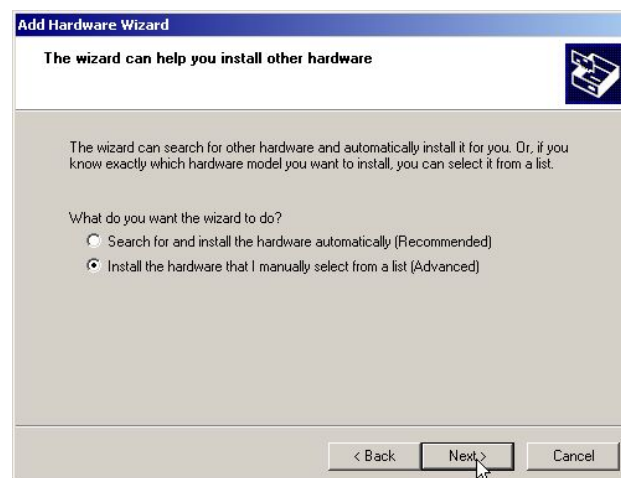
- Select “Next”



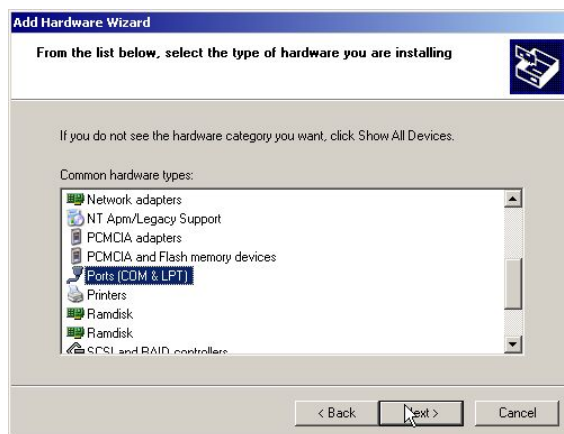
- Select “Yes, I have already connected the hardware” and then select “Next”



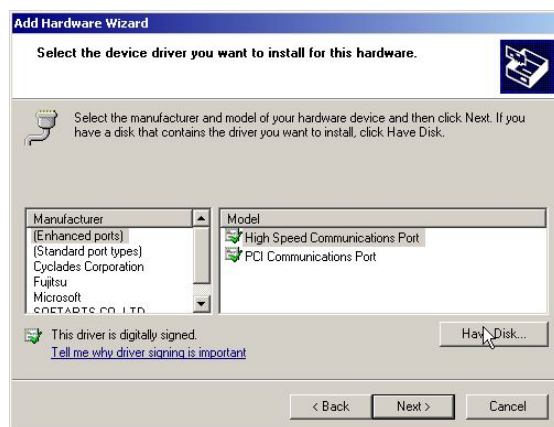
- Scroll down and select “Add a new hardware device” and select it. Then select “Next”



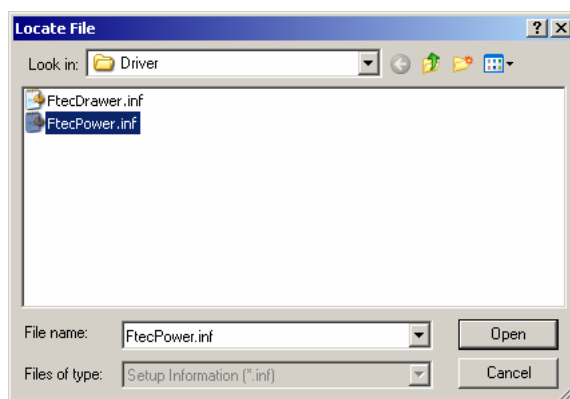
- Select “Install the hardware that I manually select from a list (Advanced)” and then select “Next”.



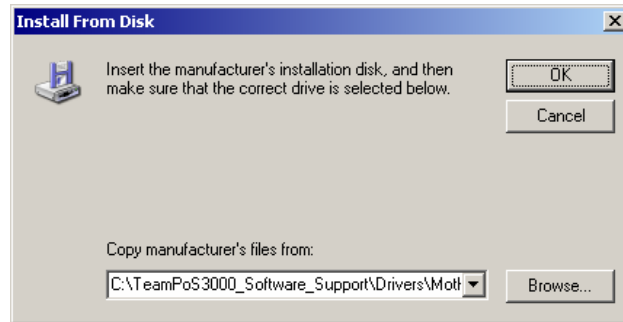
- Scroll down and select “*Ports (COM & LPT)*” and then select “*Next*”.



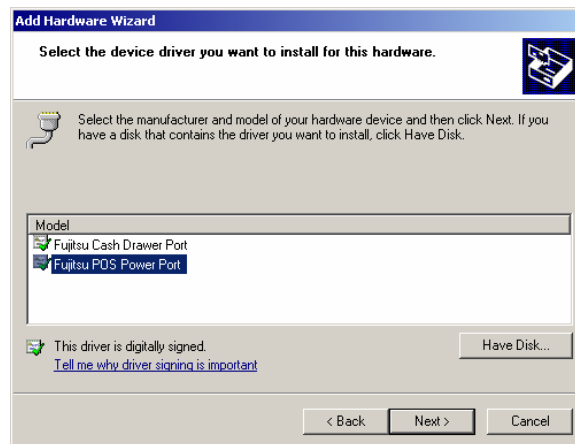
- Select “*Have Disk*”.
- Browse to the folder that contains the *TeamPoS3000 XL POS Power Virtual COM* driver and then select “*OK*”.



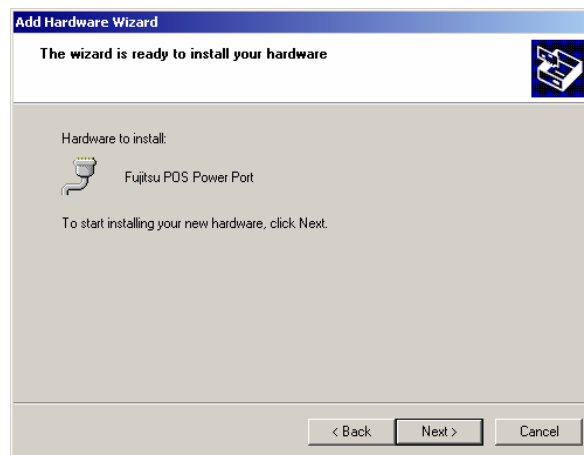
- Select “*FtecPower.inf*” and then select “*Open*”.



- Select “OK”.



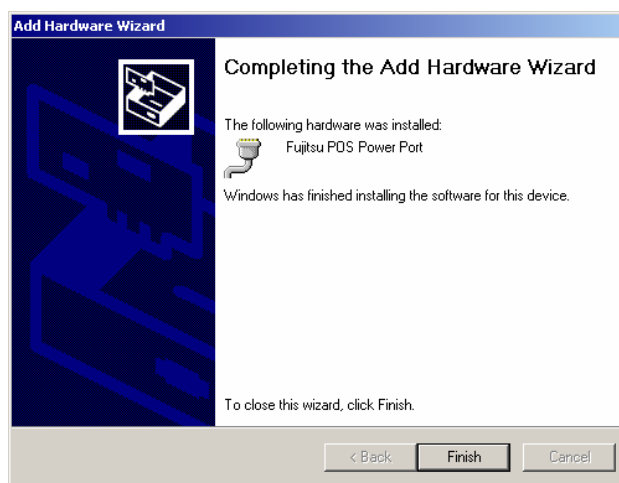
- Select “*Fujitsu PSU Port*” and then “*Next*”.



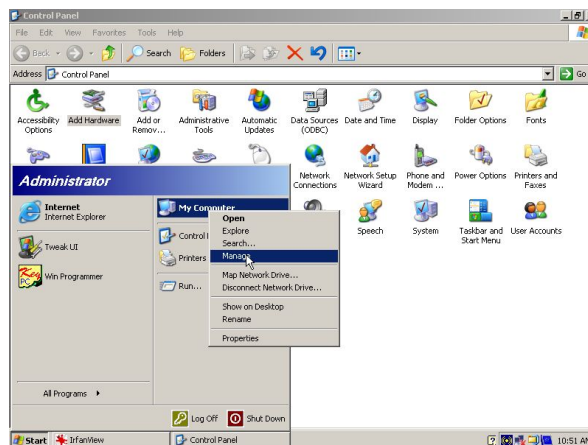
- Select “*Next*” to begin loading the software.



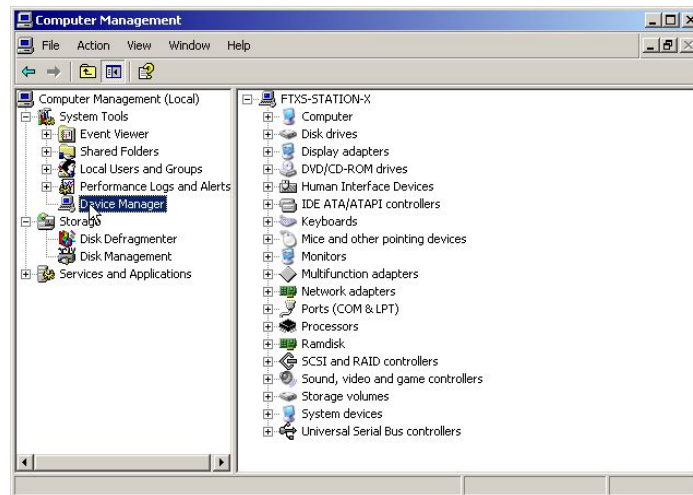
- Select *“Continue Anyway”*.



- Select *“Finish”* to complete the COM30 driver installation.



- Select *“Start”*, then right-click on *“My Computer”*, and then select *“Manage”*.



- Select “*Device Manager*” and then “*Ports (COM & LPT)*”.

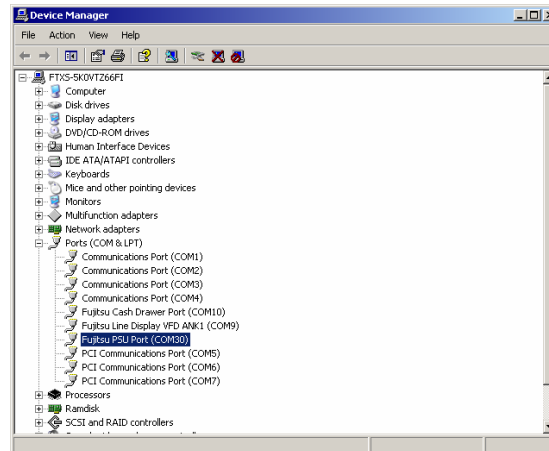


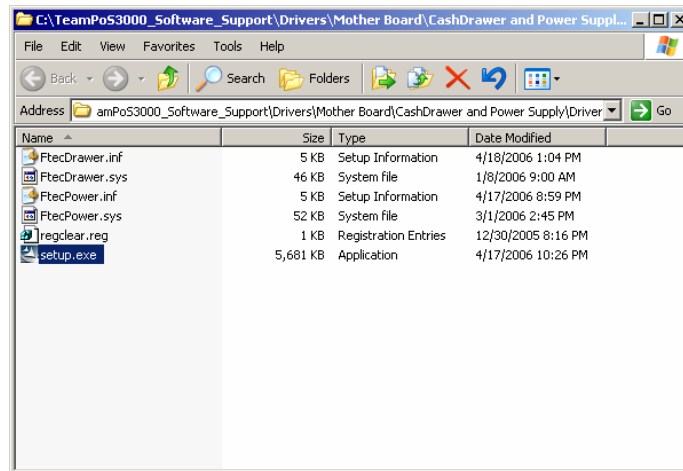
Figure 1

- Confirm "Fujitsu POS Power Port" (COM30) has been defined.

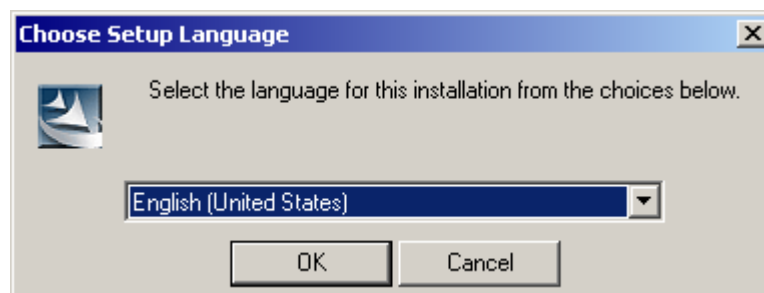
4. Installing the Cash Drawer and Power I/O Device Driver

The cash drawer and POS Power devices share the system GPIO port. A device driver service needs to be installed that manages shared access to the GPIO. Follow the steps below to install this service.

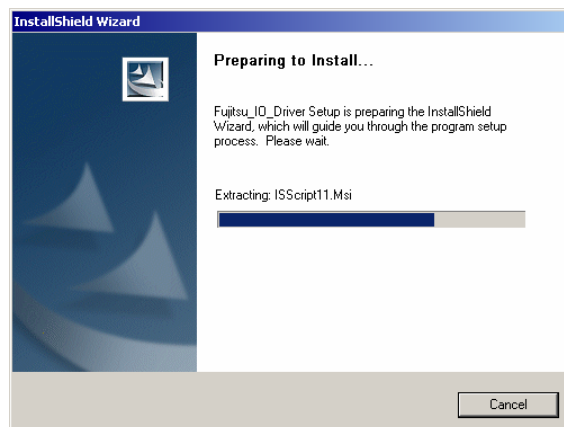
- Load the device driver that communicates with the COM10 and COM30 virtual ports.



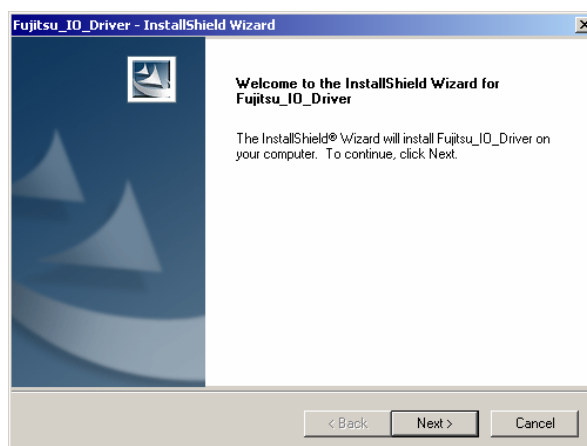
- Use windows explorer to locate and start the “Setup.exe” program provided for the Cash Drawer and Power Supply.



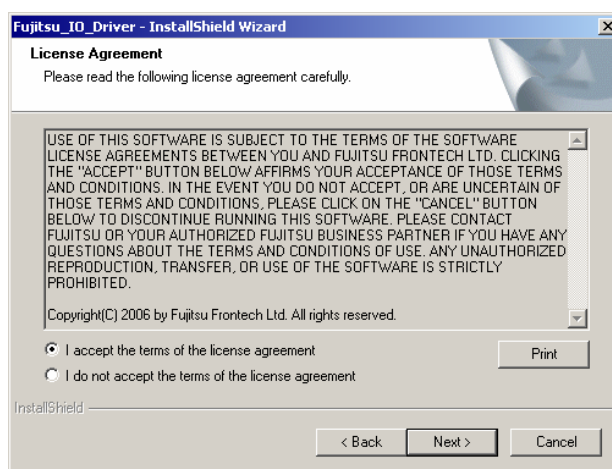
- Select "*English (United States)*". Note: the alternative option is Japanese.



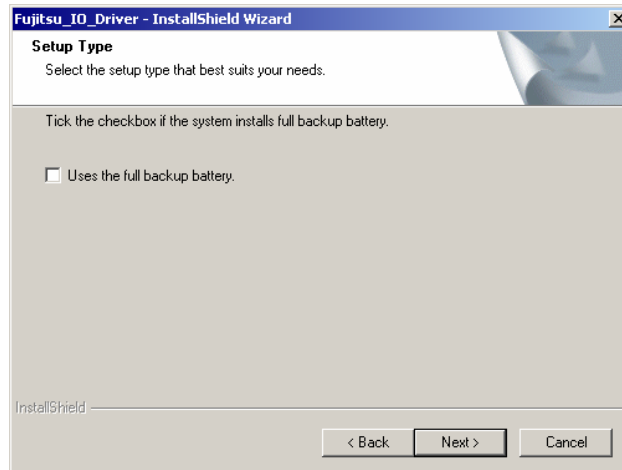
- The installation is initiated.



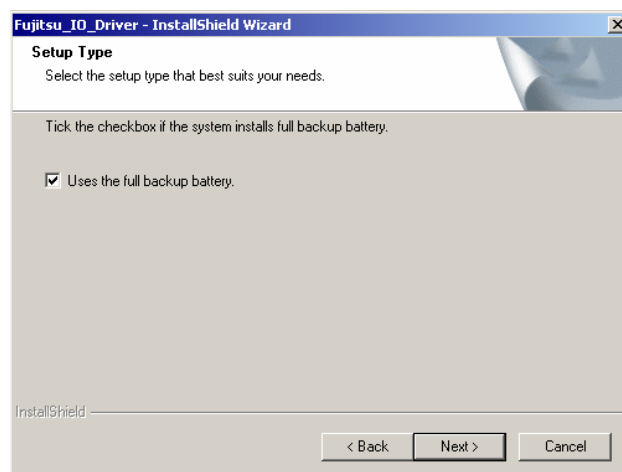
- At the Welcome screen, select "Next".



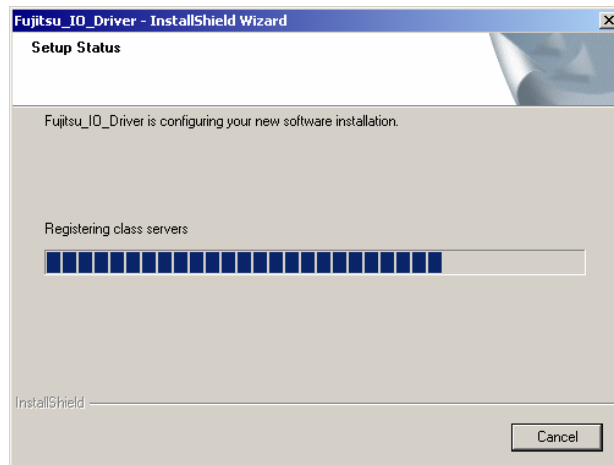
- At the License screen, check "Accept" and click "Next" to proceed.



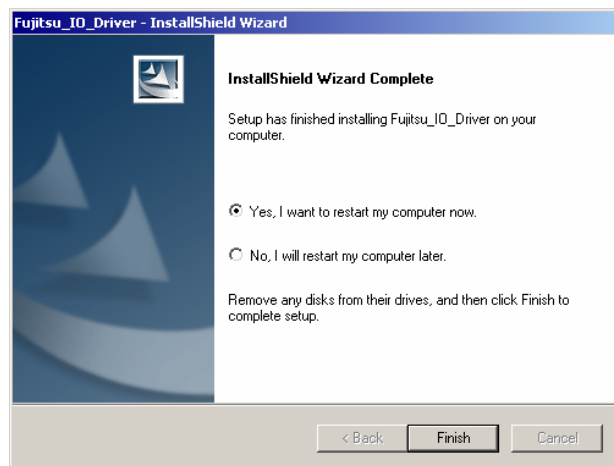
- The Setup Type screen determines the type of battery backup used. The default type is the smaller, *TeamPoS3000 XL Integrated Battery Backup*, physically located on the left hand side of the *TeamPoS3000 XL* chassis. If the Integrated Battery Backup is used, simply click "Next" on this screen to proceed.



- The second POS Power scheme involves the *TeamPoS3000 XL Integrated UPS* device. This device is a much larger battery and is only available on systems configured with the full-width Standard *TeamPoS3000 XL* chassis. The UPS is physically located on the right hand side of the Standard *TeamPoS3000 XL* chassis. If the Integrated UPS Backup is used, check the "*Uses the full backup battery*" check-box and click "Next" to proceed.



- Installation continues.

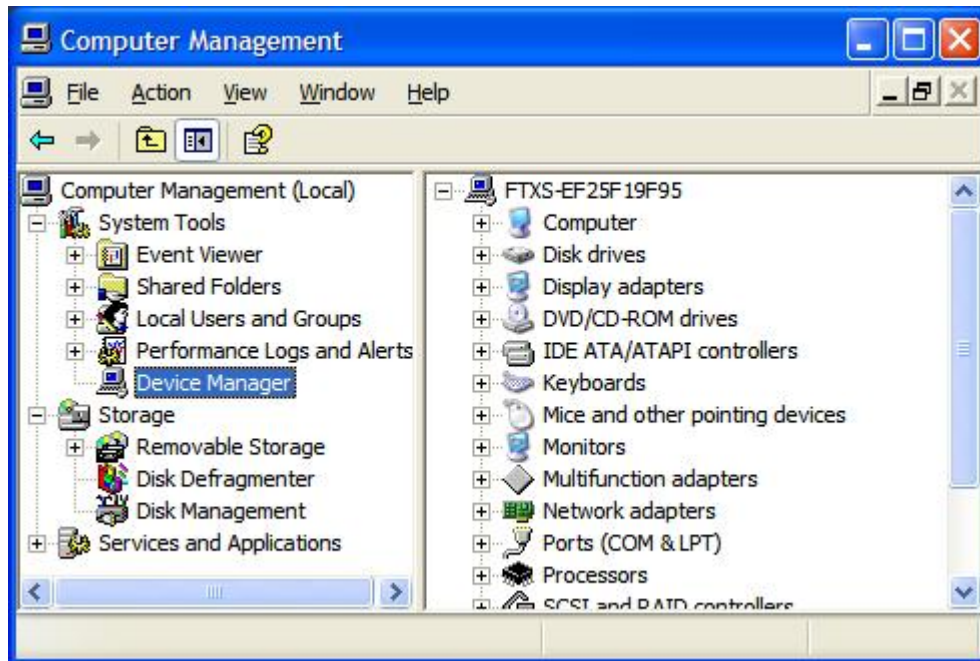


- When installation is complete, check "*Yes, I want to restart my computer now*" and click "*Finish*" to exit the installation.

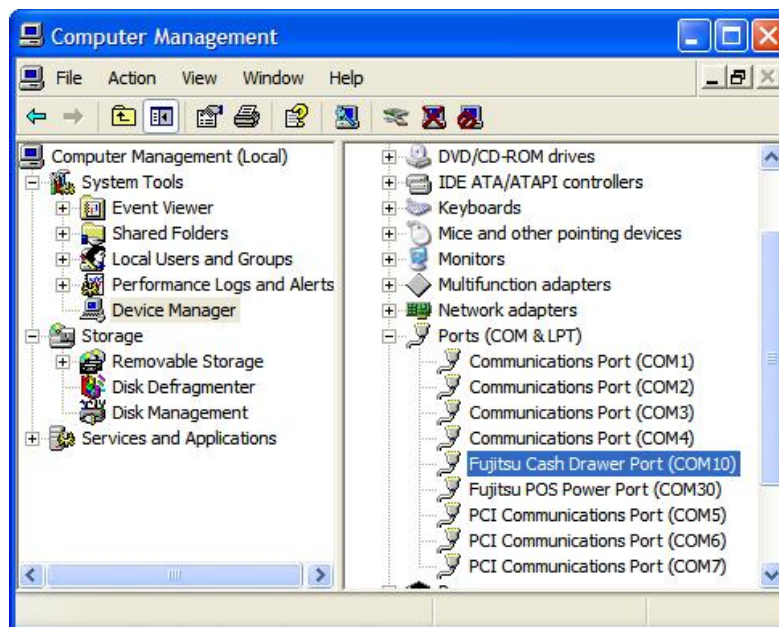
5. Uninstalling the Cash Drawer and POS Power Drivers

Use the following procedure to uninstall the COM10, COM30 and the I/O Driver.

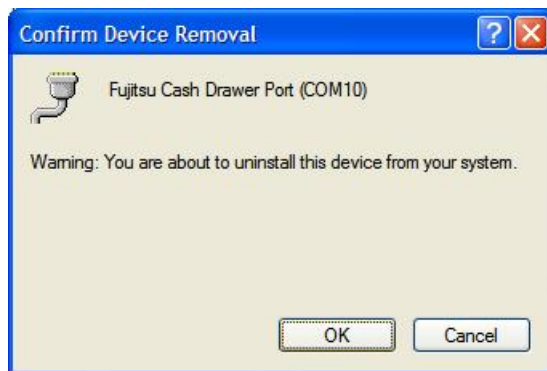
- Select “Start and then right click “My Computer”; Click “Manage”



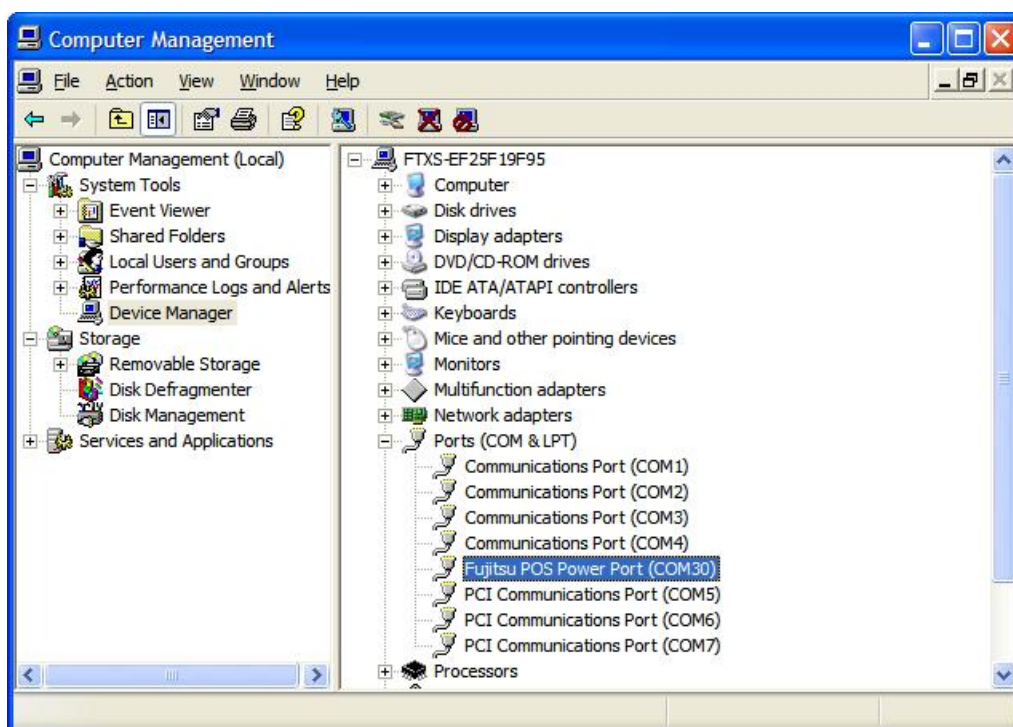
- Select “Device manager



- Expand “Ports” then Select “COM10”. Right click and select “Uninstall”



- Select "OK" to confirm uninstall

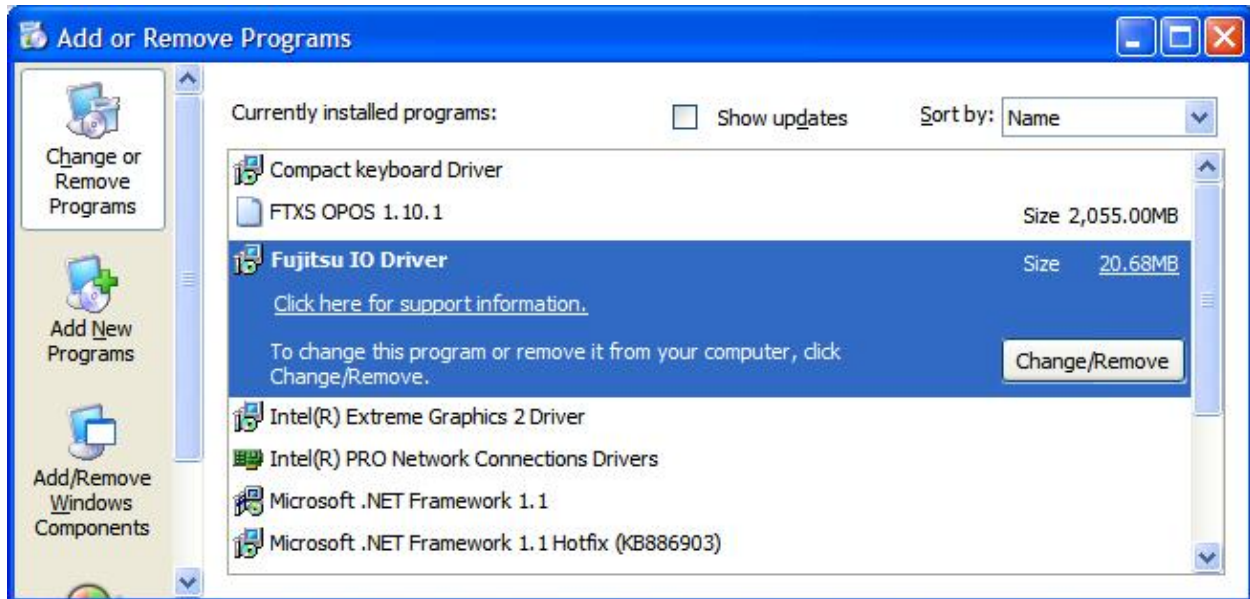


- Select "COM30". Right click and select "Uninstall"

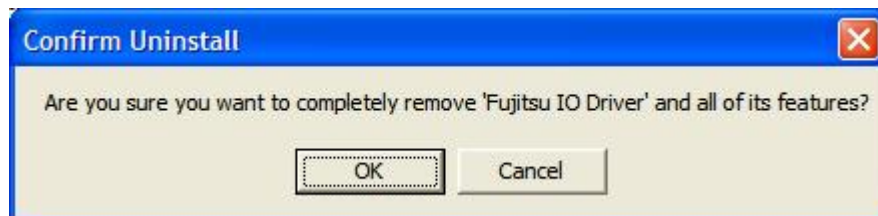


- Select "OK" to confirm Uninstall

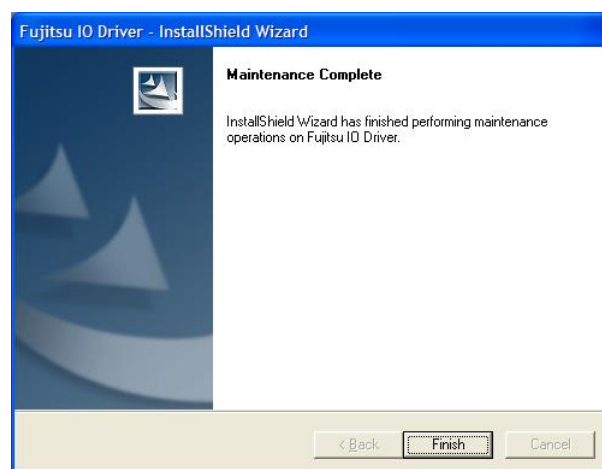
- Select “Start” then “Control Panel” then “Add/Remove Programs”



- Select “Fujitsu I/O Driver”
- Select “Change/Remove”



- Select “OK” to Remove the I/O Driver



- Select “Finish” to Complete the uninstall
- **Restart Windows**