



Retail Platform Software Support



TeamPoS® 36xx **ATI Video Card Installation**

*Issue 1.02
June 14, 2010
Status: Release
Channels: ALL
Author: DJ*



TeamPoS® 36xx **ATI R70PCI Video Card Installation**

Copyright © 2010 Fujitsu Frontech North America, Inc.

This document and the information contained herein are distributed by Fujitsu Frontech North America, Inc. ("Fujitsu") to the recipient for the purpose of facilitating business transactions with Fujitsu. Fujitsu endeavors to ensure that the information in this document is accurate and complete at the time of printing, but does not accept liability for any error or omission.

Table of Contents

1. Overview	3
2. ATI Adapter Installation and Initial Setup	3
3. VGA & DVI Dual Displays	6
4. Dual VGA Displays.....	7
5. Uninstalling Driver	8
6. Troubleshooting Tips.....	8



1. Overview

This document addresses the steps necessary to install and setup the *TeamPoS36xx* add-in ATI Video Adapter Card, which is necessary if multi-display use is desired.

Note: This card cannot be used with Windows 7 – there are no drivers available.

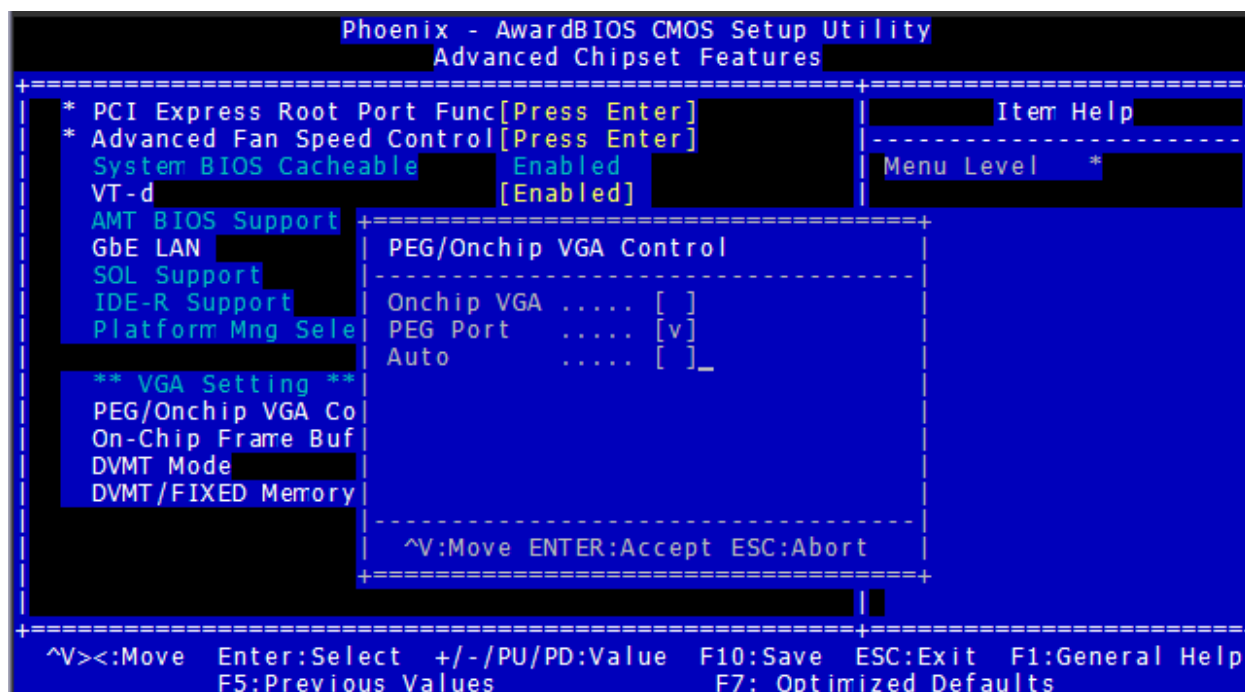
2. ATI Adapter Installation and Initial Setup

Install the ATI Video Adapter in the available *TeamPoS36xx* PCI slot.

Connect display (s) to the ATI Adapter connectors. The ATI Adapter supplies VGA and DVI connectors.

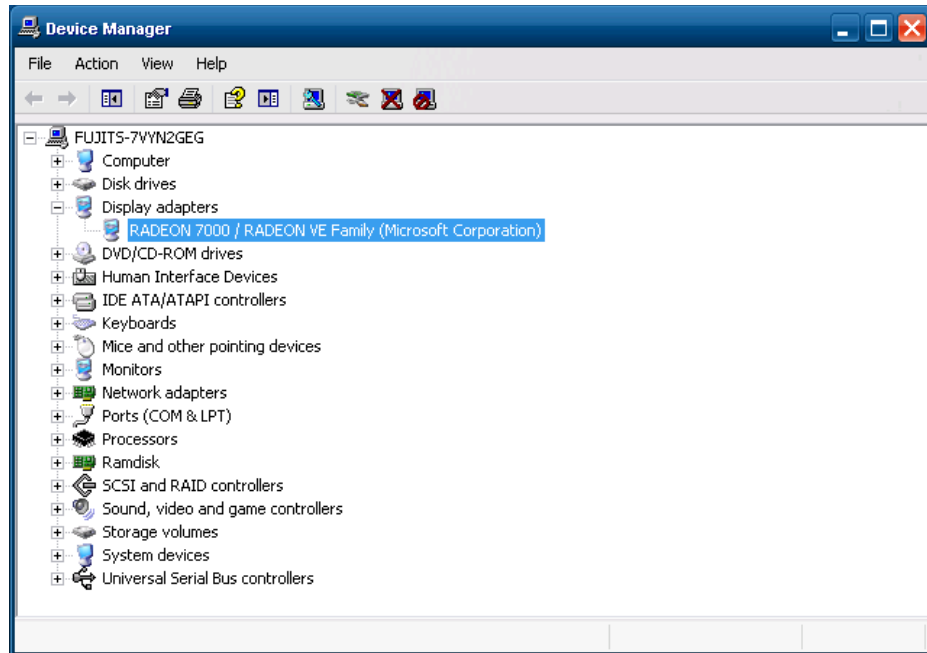
Start the system and enter BIOS Setup pressing the **DEL** key when prompted during power-up POST sequence.

On the **Advanced Chipset Features** screen, set the **PEG/Onchip VGA** Control setting to **PEG Port**.



Save BIOS settings and exit BIOS setup.

After starting Windows, the ATI Display Adapter may appear properly configured in Device Manager.



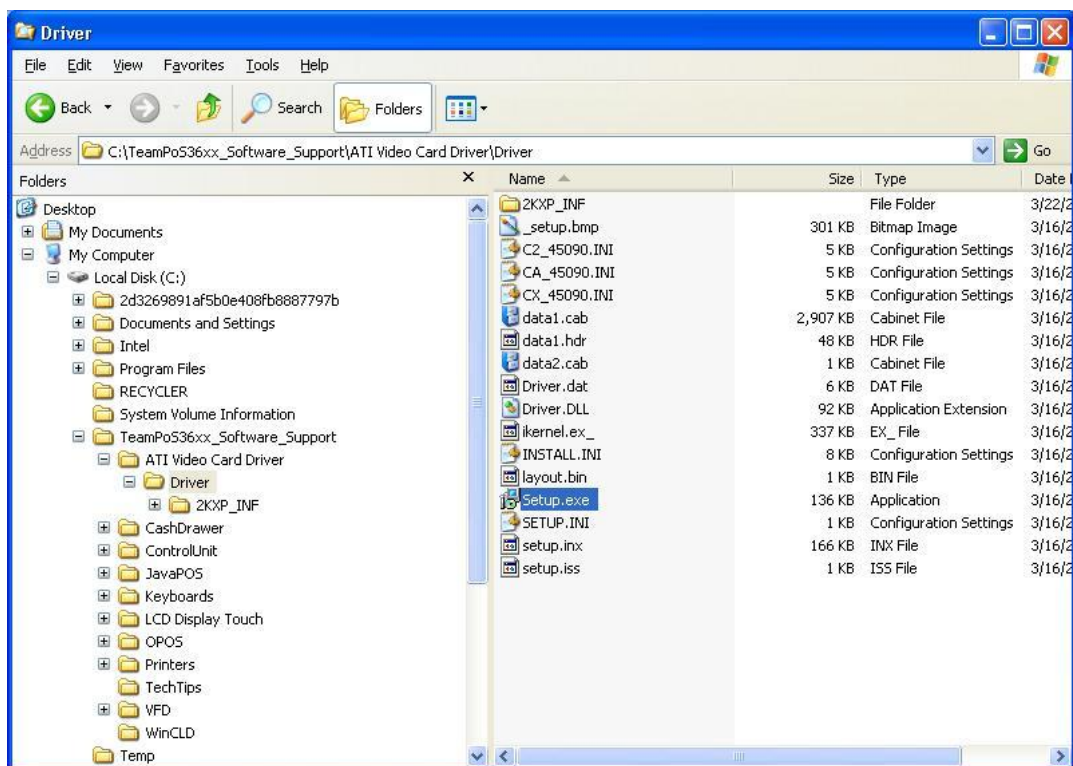
However, a special driver version is required. Install the special driver by running setup.exe found in the support folder (see below).

Note: The driver must be installed before restarting Windows after installing the video card, or restoring the system from a recovery DVD with the video card already installed.



Run **Setup.exe** in the following folder:

C:\TeamPoS36xx_Software_Support\ATI Video Card Driver\ \Driver



Now Windows can be restarted.

Note: that during start-up the screens may flash as the hardware is being detected. If the system hangs during the initial boot-up press the reset button and continue.

Run “**AtiCimUn.exe**” from the

“\Software_Support\TeamPoS36xx_Software_Support\ATI Video Card Driver” folder.

Restart the system and let the terminal discover new hardware.

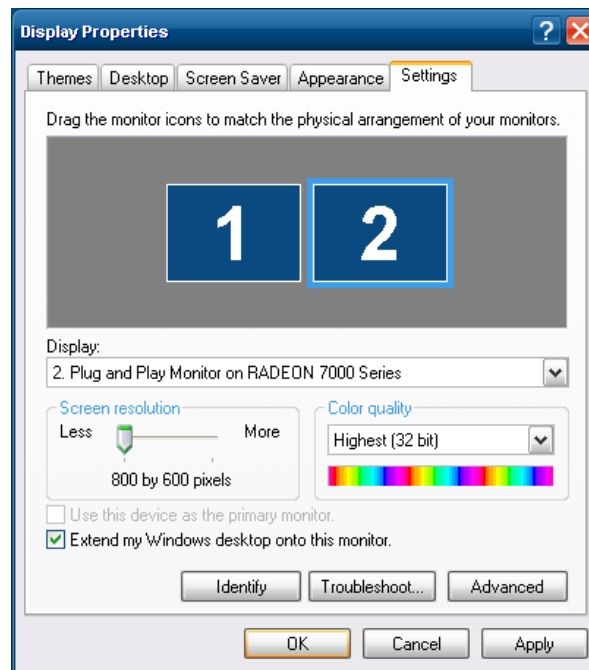
Cancel the “Found New Hardware” pop-up for the “Video Controller (VGA Compatible)” card.

From the “\Software_Support\TeamPoS36xx_Software_Support\ATI Video Card Driver\Driver” folder run “setup.exe” (again).

Restart the system.

3. VGA & DVI Dual Displays

The system will start in Clone-Mode. To change the mode to Extended, use the Windows Display/Settings applet to enable monitor 2 for extended Windows desktop.



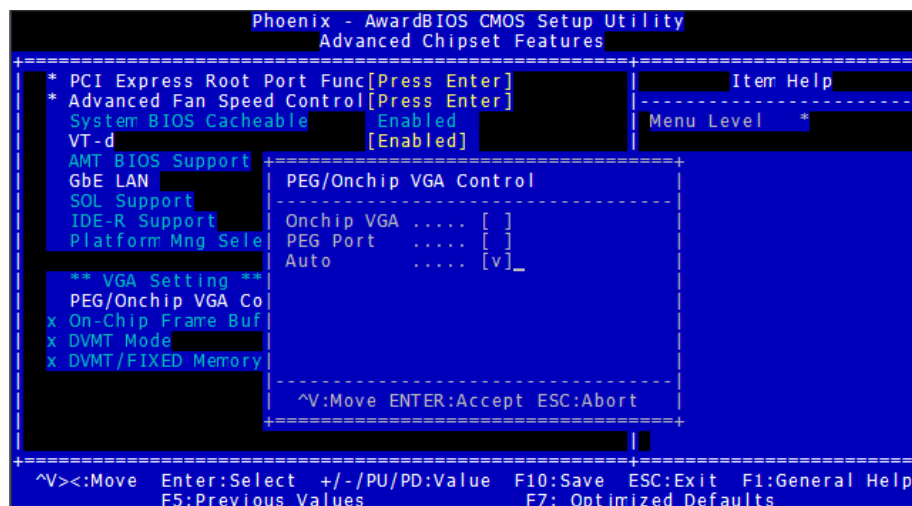
Note: The ATI Video Adapter will always use the DVI monitor as the primary device.

4. Dual VGA Displays

If two VGA displays are desired, one must be connected to the *TeamPoS36xx* on-board VGA connection, and the second to the ATI Display Adapter.

For this configuration, BIOS must be changed to:

On the **Advanced Chipset Features** screen, set the **PEG/Onchip VGA** Control setting to **Auto**.

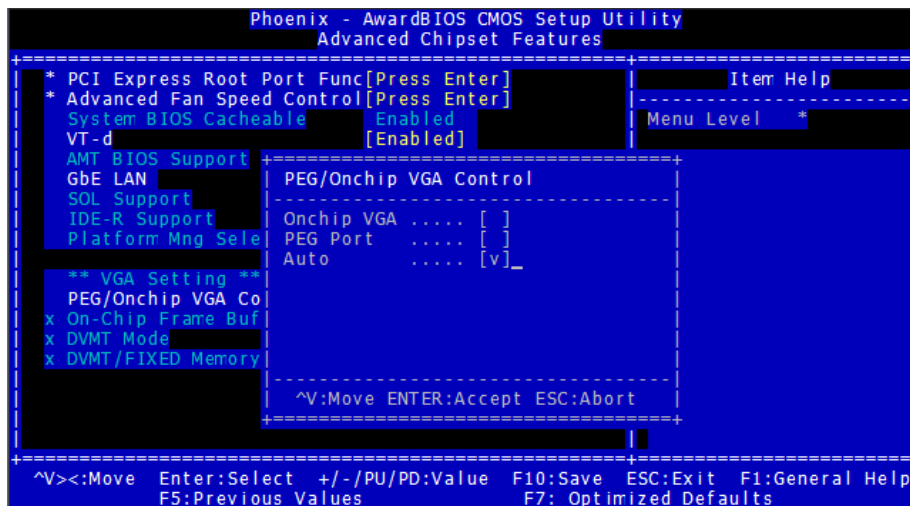


Configure the dual-displays as desired with the Windows Display/Settings applet.

5. Uninstalling Driver

Note: Before removing the ATI video card, you must insure that the BIOS PEG/Onchip setting is “Auto”. Otherwise you will not be able to use the onboard VGA video port, and will have no display device.

On the **Advanced Chipset Features** screen, set the **PEG/Onchip VGA** Control setting to **Auto**.



From the “\Software_Support\TeamPoS36xx_Software_Support\ATI Video Card Driver”, run “**AtiCimUn.exe**”.

Shutdown the system and remove the video card (**Important: see BIOS note above**).

Restart the system.

6. Troubleshooting Tips

If problems are encountered after following this install procedure –Run “**AtiCimUn.exe**” from the “\Software_Support\TeamPoS36xx_Software_Support\ATI Video Card Driver” folder. Restart Windows and **repeat the complete install procedure**.