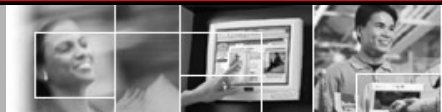


Retail Platform Software Support



**TeamPoS® 3000 XL, XT, and XE Intel Pro Ethernet Driver Installation Instructions**

Issue 1.01  
Nov 30, 2006  
Status: Release  
Channels: ALL  
Author: TAH



**TeamPoS® 3000 XL, XT, and XE  
Intel Pro Ethernet Driver  
Installation Instructions**

This document and the information contained herein are distributed by Fujitsu Transaction Solutions Inc. ("Fujitsu") to the recipient for the purpose of facilitating business transactions with Fujitsu.

Fujitsu endeavors to ensure that the information in this document is accurate and complete at the time of printing, but does not accept liability for any error or omission.

## Table Contents

1. Overview .....	3
2. Installing Intel Pro Ethernet Driver.....	4
3. Uninstalling the Intel Pro Ethernet Driver .....	7

## 1. Overview

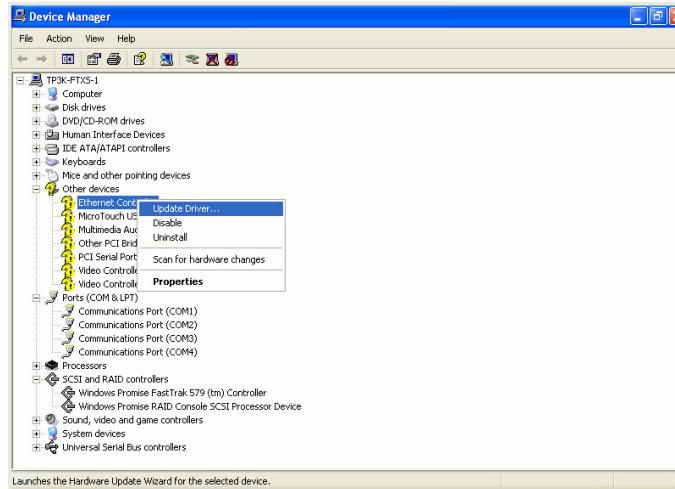
This document guides the installation of the software needed to access the *TeamPoS3000* XL, XT, and XE Intel PRO/100 Ethernet chip embedded on the motherboard.

The Intel PRO/100 Ethernet chip is enabled by default in the BIOS and will appear as an entry in the “Other Devices” section of the “Device Manager” on the completion of the installation of the Microsoft Windows XP release media.

The Intel PRO/100 Ethernet chip can be disabled in the BIOS if Ethernet support is not desired.

## 2. Installing Intel Pro Ethernet Driver

The *TeamPoS3000* XT on-motherboard supplied network adapter is an Intel 82562 chip.



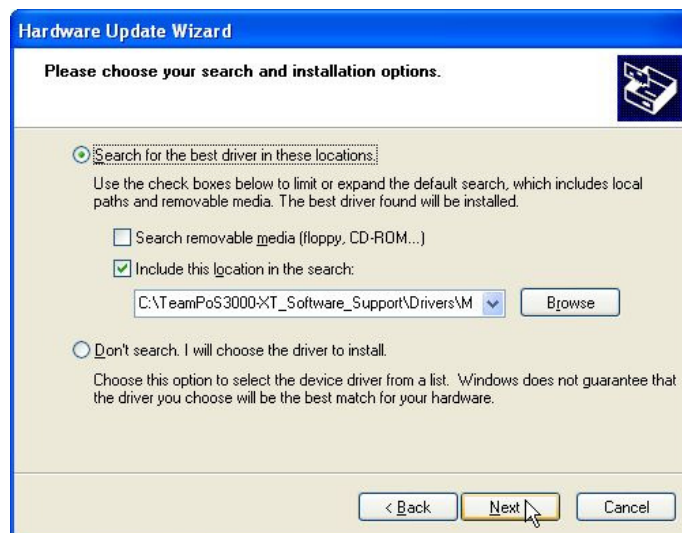
1. In Device Manager/Other Devices, right-click the entry for *Ethernet Controller* and select *Update Driver* from the context menu.



2. Select “No, not this time” and then “Next”.



3. Check *Install from a list or.....* and click *Next*



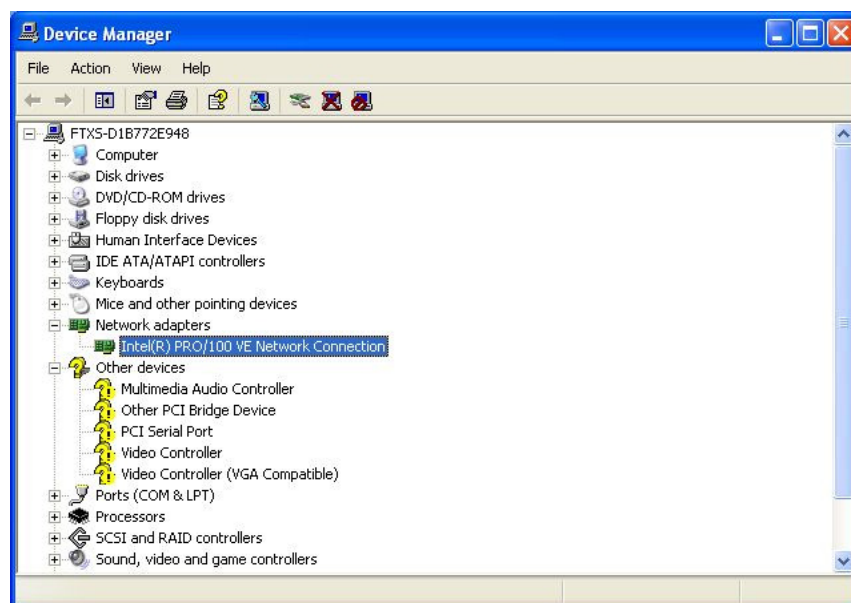
4. Check "Include this location in the search:" and browse to the folder that contains the Intel LAN driver. Using the FTXS folder layout the LAN driver is located in:

- "C:\TeamPoS3000\_Software\_Support\Drivers\Mother Board\LAN\Driver" for the TeamPoS3000 XL.
- "C:\TeamPoS3000-XT\_Software\_Support\Drivers\Mother Board\LAN\Driver" for the TeamPoS3000 XT.
- "C:\TeamPoS3000-XE\_Software\_Support\Drivers\Mother Board\LAN\Driver" for the TeamPoS3000 XE.

Uncheck "Search removable media (floppy, CD-ROM...)" and then select "Next"



5. Selecting "Finish" will finalize the Intel LAN driver installation.

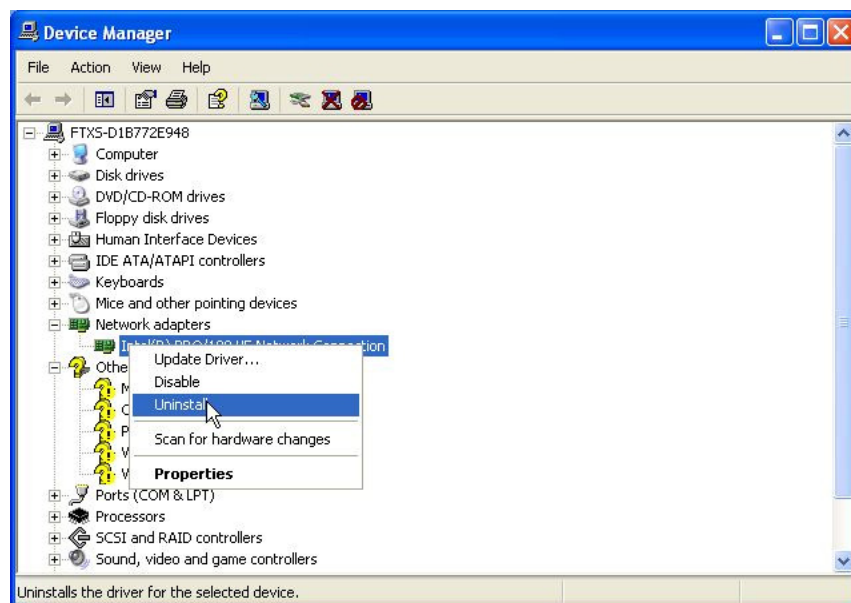


6. The Device Manager will now display the above information for the Network Adapter.

### 3. Uninstalling the Intel Pro Ethernet Driver

The uninstall process will uninstall the Intel Pro Ethernet Driver, however once the Ethernet driver has been installed the information exists to automatically reinstall the Intel Pro Ethernet Driver. The OEMX.INF file must be found in the "C:\Windows\SYSTEM32\INF" folder containing the information defining the Intel Pro Ethernet CHIP. The OEMX.INF is often OEM1.INF but is dependent on the order in which the drivers are loaded.

A second choice is to uninstall the Intel Pro Ethernet Driver and then disable the onboard Ethernet controller in the BIOS.



1. In Device Manager/Other Devices, right-click the entry for *Ethernet Controller* and select *Uninstall* from the context menu.



2. Select "OK" to complete the Uninstall.