



Retail Platform Software Support



TeamPoS 3000 Platform Software **VF60 Character Table Selection**

Issue 0.01
June 7, 2010
Status: WIP
Channels: ALL
Author: DJ



TeamPoS 3000 VF60 Character Table Selection

Copyright © Fujitsu Frontech North America Inc. 2010

This document and the information contained herein are distributed by Fujitsu Frontech North America, Inc. ("Fujitsu") to the recipient for the purpose of facilitating business transactions with Fujitsu. Fujitsu endeavors to ensure that the information in this document is accurate and complete at the time of printing, but does not accept liability for any error or omission.



OPOS/JavaPOS Character Set vs. Character Table

The Fujitsu OPOS/JavaPOS Services support character table selection in several ways. Configuration values (in the registry or jpos.xml) are used to enable the upper page selection (characters in the 128 to 255 range) and to define the default settings. The application can override these settings simply by changing the "CharacterSet" property. If neither of these procedures is desired, the enable parameter is left set to false and the Fujitsu Line Display Utility used to set the displays character table.

The international characters can only be set by configuration parameters or the utility. There are no Unified POS properties that are used to define replacement characters in the 32 to 127 range according to country and thus no way for an application to control this setting for this device.

The table below gives the mapping of the character set (code page) values and the selected character table. The Character Tables can be found at the end of this document.

Character Set	Character Table (hex)
101	6
850	2
858	19
860	3
863	4
865	5
932	7
1252	6
All other	0

Procedure to enable the service to configure the VF60 character set:

1. If needed, add the code page you want to the list parameter "CharacterSetList".
2. Select the character set by setting parameter "CharacterSet" (default is 101).
3. Select the international character set desired (default is 0 - USA)
4. Set the enable parameter (see below) to true. This is needed for the service to actually change the VF60 Character Page setting. Otherwise the service will use the settings that are currently selected in the device.



OPOS Specific Settings:

OPOS uses the Windows registry to define parameters for the device service. The registry paths for the VF60 line displays are. **Note: “SetSBCS” default setting is “false”.**

HKLM/Software/OleForRetail/ServiceOPOS/LineDisplay/VF60-1

HKLM/Software/OleForRetail/ServiceOPOS/LineDisplay/VF60-2

OPOS Registry Settings:

"SetSBCS"="T" {true to enable}
"CharacterSet"=101 {from list}
"SetInternational"="0" {Use value 0 – 10}
"CharacterSetList"
=101,102,437,850,858,860,863,865,932,936,949,950,998,1252

OPOS for the VF60 can be found at the following link:

<http://www.fujitsu.com/us/services/retailing/support/drivers/opos/>

JavaPOS Specific Settings:

JavaPOS uses an XML file (usually jpos.xml) to define parameters for the device service. **Note: “EnableCharTables” default setting is “true”.**

JavaPOS jpos.xml Settings:

```
<prop name="EnableCharTables" type="String" value="true"/> {true to enable}  
<prop name="InternationalTable" type="String" value="0"/> {Use value 0 – 10}  
<prop name="CharacterSet" type="String" value="101" /> {from list}  
<prop name="CharacterSetList" type="String"  
value="101,102,437,850,858,860,863,865,932,936,949,950,998,1252" />
```

JavaPOS for Windows can be found at the following link:

<http://www.fujitsu.com/us/services/retailing/support/drivers/teamposdevices/>
Download FJWinJavaPOS.ZIP.

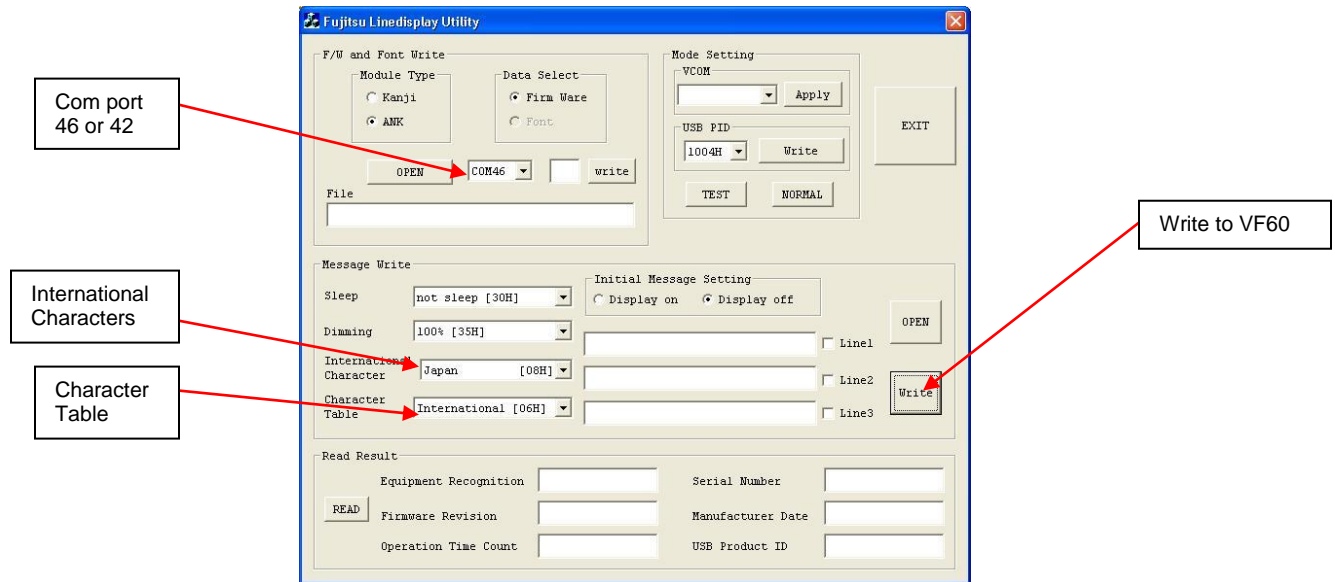


Fujitsu Line Display Utility:

The line display utility can also be used to select the VF60 character table international character set and can be found at the following link:

<http://www.fujitsu.com/us/services/retailing/support/drivers/teamposdevices/>

Download the VF60.ZIP file.



Procedure to use the utility to configure the VF60 character set:

1. Select COM Port (COM46 [VF60-1] : COM42 [VF60-2])
2. Select International Characters
3. Select Character Table
4. Click "Write" button to send to the display

VF60 International Characters and Character Tables:

Common:

	0	1	2	3	4	5	6	7	8	9	A	B	C	D	E	F
2																
3																
4																
5																
6																
7																

International Character Set:

	23	24	40	5B	5C	5D	5E	60	7B	7C	7D	7E	Country
0													America
1													France
2													Germany
3													England G.B.
4													Denmark I
5													Sweden
6													Italy
7													Spain
8													Japan
9													Norway
A													Denmark II

Pn = 00H

	0	1	2	3	4	5	6	7	8	9	A	B	C	D	E	F
8																
9																
A																
B																
C																
D																
E																
F																

Pn = 01H

	0	1	2	3	4	5	6	7	8	9	A	B	C	D	E	F
8																
9																
A																
B																
C																
D																
E																
F																

Pn = 02H

	0	1	2	3	4	5	6	7	8	9	A	B	C	D	E	F
8																
9																
A																
B																
C																
D																
E																
F																

Pn = 03H

	0	1	2	3	4	5	6	7	8	9	A	B	C	D	E	F
8																
9																
A																
B																
C																
D																
E																
F																

Pn = 04H

	0	1	2	3	4	5	6	7	8	9	A	B	C	D	E	F
8																
9																
A																
B																
C																
D																
E																
F																

Pn = 05H

	0	1	2	3	4	5	6	7	8	9	A	B	C	D	E	F
8																
9																
A																
B																
C																
D																
E																
F																

Pn = 06H

	0	1	2	3	4	5	6	7	8	9	A	B	C	D	E	F
8																
9																
A																
B																
C																
D																
E																
F																

Pn = 07H

	0	1	2	3	4	5	6	7	8	9	A	B	C	D	E	F
8																
9																
A																
B																
C																
D																
E																
F																

Pn = 19H

	0	1	2	3	4	5	6	7	8	9	A	B	C	D	E	F
8																
9																
A																
B																
C																
D																
E																
F																