

## Note on using PRIMERGY TX300 S4

Thank you for purchasing our product. Before you start using your server, please carefully read the additional notes described below.

March 2008  
FUJITSU LIMITED

### 1. Setting for onboard LAN controller on Windows Server 2003 or Windows Server 2003 x64

#### [IMPORTANT]

When the server runs on Windows Server 2003 or Windows Server 2003 x64, the onboard LAN controller may not work properly (\*) with some applications. To avoid the symptom, make sure to disable the TCP Chimney Offload setting by following the instruction below.

1. Start Windows Server 2003 or Windows Server 2003 x64.
2. Select [Start] - [Run] and type in "cmd" to activate the command prompt.
3. Enter the following command on the command prompt and press <ENTER>

C:> Netsh int ip set chimney DISABLED

4. Dialog box [OK] displays when the change is completed.  
(You do not need to restart the server after this command.)

\* Example of the cases where the LAN controller does not work properly.

1) When the data transfer is performed through FTP.

1-1 "426 Connection Closed; transfer aborted" is displayed.

1-2 The FTP connection is disconnected and the data cannot be transferred through FTP.

2) When an application that connects to SQL Server by using TCP/IP is used, you may intermittently receive one of the following error messages when the application connects to SQL Server.

2-1 [Microsoft] [ODBC SQL Server Driver] [DBNETLIB] General Network error  
Refer to the network manuals in this case.

2-2 [Microsoft] [SQL Native Client] Communication link failure

2-3 System.Data.SqlClient.SqlException: A transport-level error has occurred when sending the request to the server.

### 2. Warning Messages of ServerView Remote Connector upon OS startup

#### [Symptom]

When all the connection described later are met, the warning message below may be recorded on the Application Event Log upon the startup of the server.

Type: **Warning**  
 Source: **ServerView Remote Connector**  
 Event ID: **0**  
 Description:  
**Initialization not completed timely (0 seconds)**

#### [Conditions]

- 1) ServerView Agent for Windows is installed, and
- 2) The system is highly-loaded during startup.

#### [Cause]

The heavy load during the system startup causes the delay in the processing to initialize ServerView Remote Connector. This warning message is to report that the service startup is not completed within the certain period of time, and not that the service startup has failed.

[Remedy]

Even if the message is recorded due to the delay in the processing to initialize the ServerView Remote Connector service, the processing continues. The service is automatically started after the completion of the initialization, so no special action is required.

ServerView Remote Connector service is used with the following ServerView functions. Even if this service is not active, no other functions are affected.

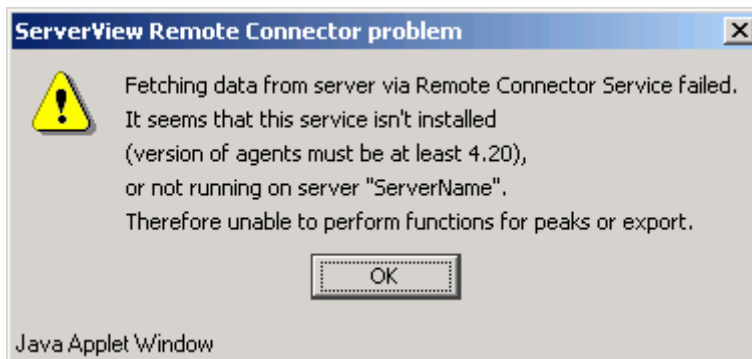
- Performance Manager
- Power Monitor

**Supplementary Information: How to Confirm**

Follow either of the procedures below to confirm whether the ServerView Remote Connector service is running normally.

- 1) When Performance Manager is used
  - Start the Performance Manager from the ServerView S2.
  - Select the server for which you want to confirm the ServerView Remote Connector service operation from the left side frame.
  - Select the [Report View] tab.
  - Select any report, and click on the [Show >>] button.

If the graphic is displayed, the ServerView Remote Connector service is running normally and no change is required. When the service is not running normally, the following dialog is displayed.

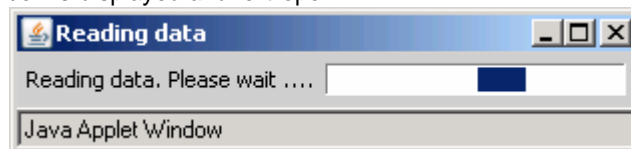


Note: It is necessary to make the report setting beforehand.  
For the usage of Performance Manager, refer to "ServerView User's Guide".

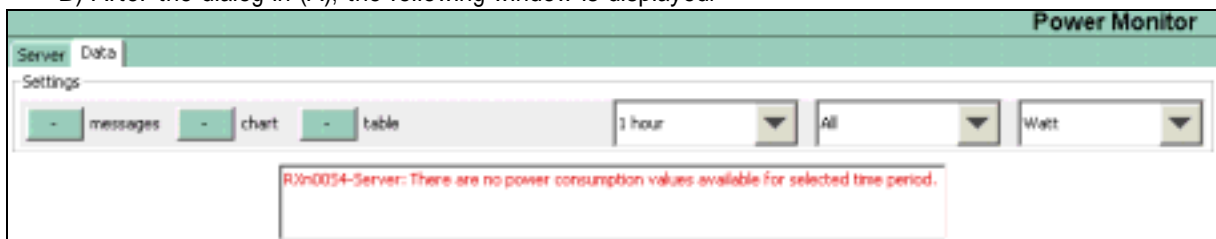
- 2) When Power Monitor is used
  - Start the Power Monitor from the ServerView S2.
  - Select the server for which you want to confirm the ServerView Remote Connector service operation from the left side frame.
  - Select the [Data] tab.

If the graphic is displayed, ServerView Remote Connector service is running normally and no change is required. When the service is not running normally, the following dialogs are displayed.

A) The following dialog box is displayed and left open.



B) After the dialog in (A), the following window is displayed.



Note: For the usage of Power Monitor, refer to "ServerView User's Guide".

When the ServerView Remote Connector is not running normally, restart the service by following the procedure below. (There is no need to reboot the system.)

[Control Panel] - [Administrative Tools] - [Services] - [ServerView Remote Connector]  
 Select <Restart Service>

### 3. Updates on "PRIMERGY TX300 S4 User's Guide" (B7FH-5161-01EN)

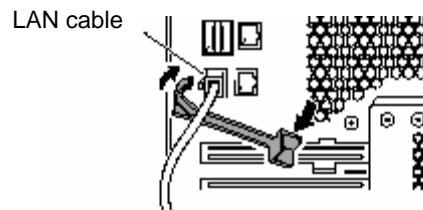
#### Chapter 1 "1.3.2 Server (rear view)" (Page 27)

##### Deletion

LAN cable removal lever is not mounted on this server, so the following description is deleted.

- LAN cable removal lever

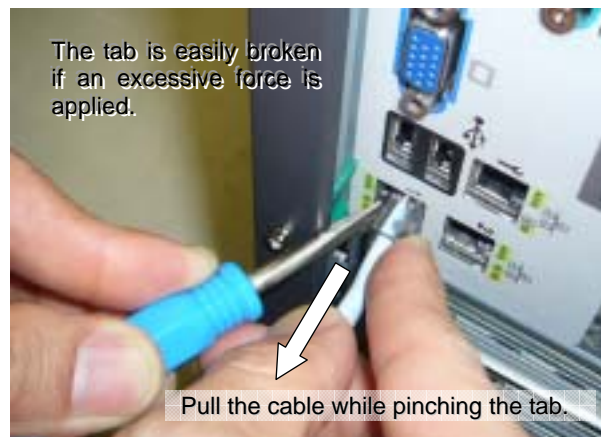
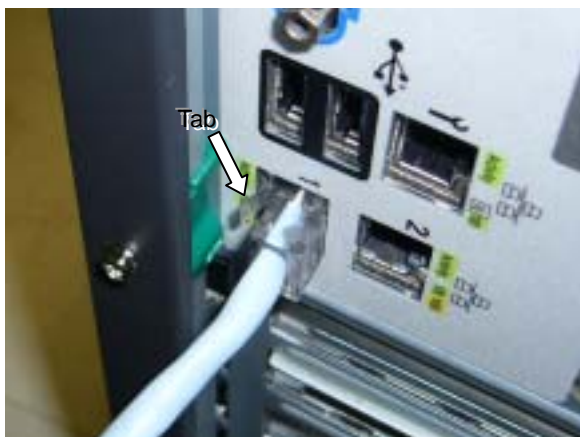
To disconnect the LAN cable attached to the LAN port 1, release the lock of the lever by pulling down the lever and pull out the cable.



##### Addition

The following description is added.

If there is difficulty to pull out the LAN cable which is connected to LAN port 1, use a flathead driver to pinch the tab while pulling out the cable as figures below.



#### Chapter 7 "7.2.10 IPMI Submenu" (Page 189)

##### LAN Settings submenu

##### Correction

The error on the table of LAN Setting submenu is corrected.

Incorrect:

Item	Setting
Service LAN	Enabled (Unchangeable)

Correct:

Item	Setting
Service LAN	<ul style="list-style-type: none"> <li>· Disabled</li> <li>· Enabled (Initial value)</li> </ul>

## **Chapter 7 "7.2 BIOS Setup Utility" (Page 194 - 195)**

### **Addition**

The following submenu is added between "7.2.14 Memory Status Submenu" and "7.2.15 Console Redirection Submenu".

### **PCI Status Submenu**

This submenu appears when you select [PCI Status] at the [Server] menu.

Use this submenu to set whether or not to allow the use of the loaded expansion cards.

Table: PCI Status submenu

Item	Setting	Description
Slot 1	OK(Unchangeable)	Sets whether to allow the use of the expansion cards on PCI slots 1 to 7. If [Failed] is displayed, replace the expansion card and change the setting to [OK].
Slot 2		
Slot 3		
Slot 4		
Slot 5		
Slot 6		
Slot 7		

## **4 . Correction of "PRIMERGY TX300 S4 Contents List"(CA92276-8048-01)**

### **Attachment items:**

#### **Deletion**

The following item is deleted from the list.

Tag Label