

How to update PRIMEQUEST Fibre Channel Card Firmware/EFI driver (For Windows Server 2008)

4th edition
Jun 12, 2009

Preface

Purpose

This manual describes the work required for updating the Fibre Channel card firmware/EFI driver compatible with drivers for the Fibre Channel cards (MC-08FC31/41/51/61/71/81/91) supplied for PRIMEQUEST servers used in Windows Server 2008 environments.

Intended Readers

This manual is intended for system administrators.

Constitution

This manual is organized as follows.

| Chapter and title | Description |
|---|---|
| Chapter 1: Fibre Channel Card Firmware/EFI driver | Describe the firmware/EFI driver compatible with the Fibre Channel card driver for PRIMEQUEST. |
| Chapter 2: Application of Firmware/EFI driver | Describe the flow for setting the firmware/EFI driver that is compatible with a driver. |
| Chapter 3: Fibre Channel Card Firmware/EFI driver Update Procedures | Describe the preparations required for changing the firmware/EFI driver and explain the procedures for updating it. |
| Appendix A: Lists of the Folder Hierarchy on the Firmware CD | Describe the directory paths to the corresponding firmware/EFI driver contained on the Firmware CD |
| Appendix B: Directions for Fibre Channel Card Settings | Provides directions for the confirmation and the setting of Fibre Channel card firmware/EFI driver compatible with each Fibre Channel driver for Windows Server 2008. |

Revision History

Publisher : Fujitsu Limited
Jun, 2009 publication [4.0]

| Edition | Page | Date | Description |
|---------|------|---------------|---------------------|
| 1.0 | All | Jun. 2, 2008 | First issued |
| 2.0 | All | Apr. 20, 2009 | Add driver 2.10a7 |
| 3.0 | All | May. 20, 2009 | Add 8GFC card |
| 4.0 | 4 | Jun. 12, 2009 | Add Windows2008 SP2 |
| | | | |

Trademark

Windows and Windows Server are registered trademarks or trademarks of Microsoft Corporation or its subsidiaries in the United States and other countries.

All other product names mentioned herein the trademarks or registered trademarks of their respective owners.

Copyright(c) 1981-2009 Microsoft Corporation. All rights reserved.

Copyright(c) 2008, 2009 Emulex Corporation.

All Rights Reserved, Copyright(c) Fujitsu Limited 2008, 2009

Contents

Chapter 1 Fibre Channel Card Firmware/EFI driver

- 1.1 Firmware/EFI driver Compatible with the Fibre Channel Card Drivers for PRIMEQUEST
 - 1.1.1 Firmware/EFI driver for the Fibre Channel cards supported by Windows Server 2008 drivers
 - 1.1.2 Confirming the firmware/EFI driver version

Chapter 2 Application of Firmware/EFI driver

- 2.1 Flow for Setting Firmware/EFI driver Compatible with a Driver for Windows Server 2008

Chapter 3 Fibre Channel Card Firmware/EFI driver Update Procedures

- 3.1 Preliminary Information
- 3.2 Required Setup
- 3.3 Notes
- 3.4 Flow for Updating Fibre Channel Card Firmware/EFI driver
- 3.5 Fibre Channel Card Firmware/EFI driver Update Procedures
- 3.6 Fibre Channel Card Firmware/EFI driver Update Procedures in Detail

Appendix A Lists of the Folder Hierarchy on the Firmware CD

Appendix B Directions for Fibre Channel Card Settings

Chapter 1 Fibre Channel Card Firmware/EFI driver

1.1 Firmware/EFI driver Compatible with the Fibre Channel Card Drivers for PRIMEQUEST

When an FC driver for Windows Server 2008 is installed, firmware/EFI driver for the Fibre Channel card supported by the driver must be updated.

This firmware/EFI driver update work is required at the time of PRIMEQUEST new installation, the Fibre Channel driver change time, and the Fibre Channel card replacement/addition time.

For details of the work, see Section 2.1, "Flow for Setting Firmware Compatible with a Driver for Windows Server 2008."

1.1.1 Firmware/EFI driver for the Fibre Channel cards supported by Windows Server 2008 drivers

Note: Only the following pairs of drivers and cards can be used.

| Model name | Number shown in brackets on label for Fibre Channel card | Windows Server 2008 driver | |
|------------|--|--|---|
| | | 2.00a12(V6.2.00.12) for Windows2008 | 2.10a7(V6.2.10.7) for Windows2008/ Windows2008 SP2 |
| MC-08FC71 | CA05950-1020 | Firmware : 1.92a1 EFI driver : 3.21a5 | Firmware : 1.92a1 EFI driver : 4.00a1 |
| MC-08FC31 | CA05951-9610 | Firmware : 2.72a2 EFI driver : 3.21a5 | Firmware : 2.80a4 EFI driver : 4.00a1 |
| MC-08FC41 | CA05951-9611 | | |
| MC-08FC51 | CA05951-9612 | | |
| MC-08FC61 | CA05951-9613 | | |
| MC-08FC81 | CA05954-1010 | Disable | Firmware : 1.11a5 EFI driver : 4.00a1 |
| MC-08FC91 | CA05954-1011 | | |

- Remarks -

MC-08FC71 : 2GFC PCI-X Single Port Channel (LP10000)
 MC-08FC31 : 4GFC PCI-X Single Port Channel (LP11000)
 MC-08FC41 : 4GFC PCI-X Dual Port Channel (LP11002)
 MC-08FC51 : 4GFC PCI-Express Single Port Channel (LPe11000)
 MC-08FC61 : 4GFC PCI-Express Dual Port Channel (LPe11002)
 MC-08FC81 : 8GFC PCI-Express Single Port Channel (LPe1250)
 MC-08FC91 : 8GFC PCI-Express Dual Port Channel (LPe12002)

*We recommend the latest Windows Server 2008 driver.

(The driver that the numerical value of the version is the biggest is the latest.)

*Apply the same version Windows Server 2008 driver to all FC cards.

(When 8GFC is added newly on already using 2GFC/4GFC in the state that Windows Server 2008 driver is the version 2.00a12, apply Windows Server 2008 driver version 2.10a7 and the pertinence firmware/EFI driver to all FC cards.)

* Firmware CD(C122-E018-XXC2) is version 26 or later.

As for "Firmware CD", the version 26 or later CD is pertinent.

* XX in "C122-E018-XXC2" represents an arbitrary value.

(For example, if XX is 26, it represents Version 26.)

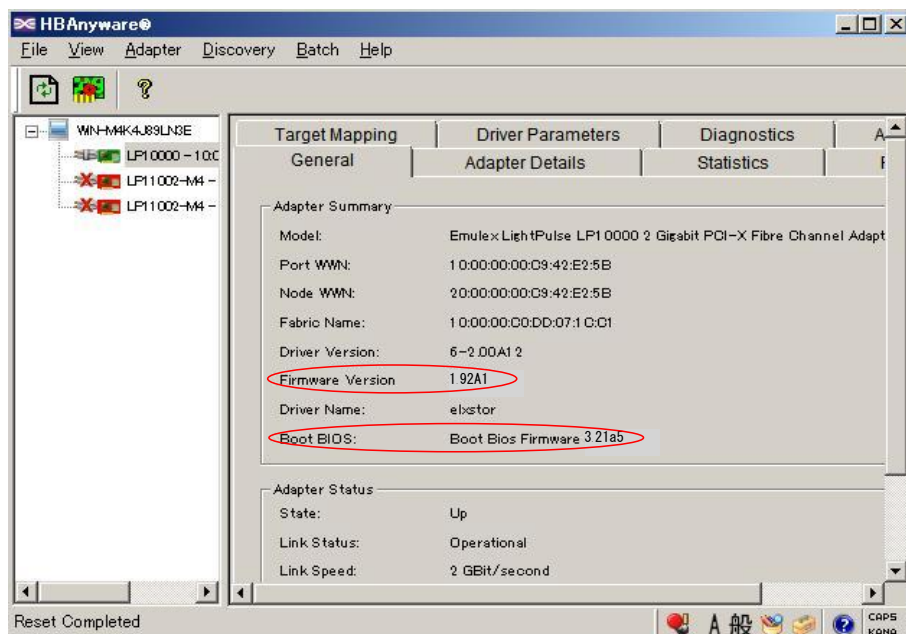
1.1.2 Confirming the firmware/EFI driver version

Confirm the current firmware/EFI driver version by one of the following procedures below.

(1) Confirmation with a Windows tool (HBAnyware)

< Windows Server 2008 driver is version 2.00a12 >

1. Start HBAnyware.
Click the [Start] button, and then click [All Programs] - [Emulex] - [HBAnyware].
HBAnyware is started.
2. Select the corresponding Fibre Channel card (port). Select the tab [General].
3. Confirm the Firmware version in "Firmware Version", and the EFI driver version in "Boot BIOS".



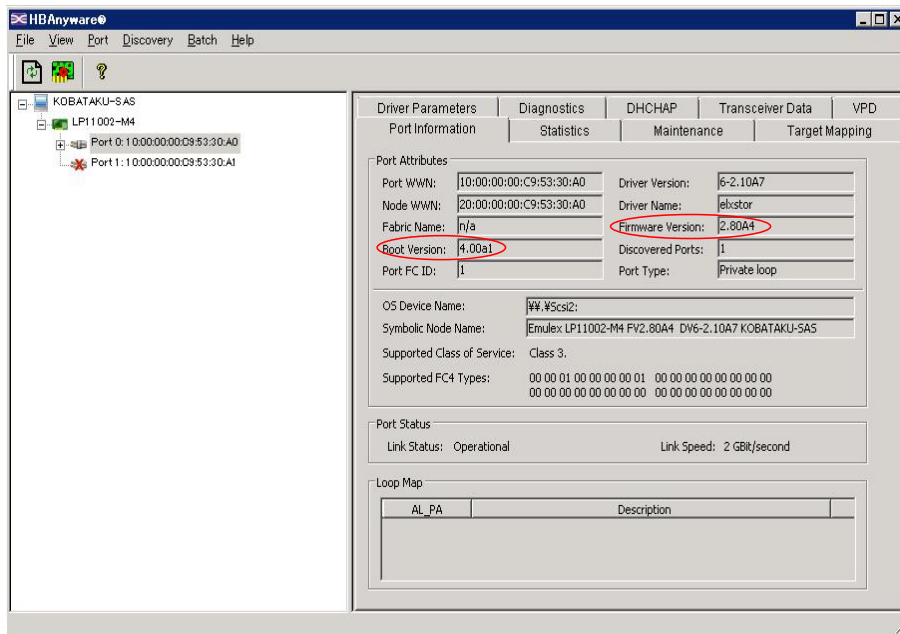
< Windows Server 2008 driver is version 2.10a7 >

1. Start HBAAnyware.

Click the [Start] button, and then click [All Programs] - [Emulex] - [HBAAnyware].
HBAAnyware is started.

2. Select the corresponding Fibre Channel card (port). Select the tab [Port Information].

3. Confirm the Firmware version in "Firmware Version". Confirm the EFI driver version in "Boot Version".



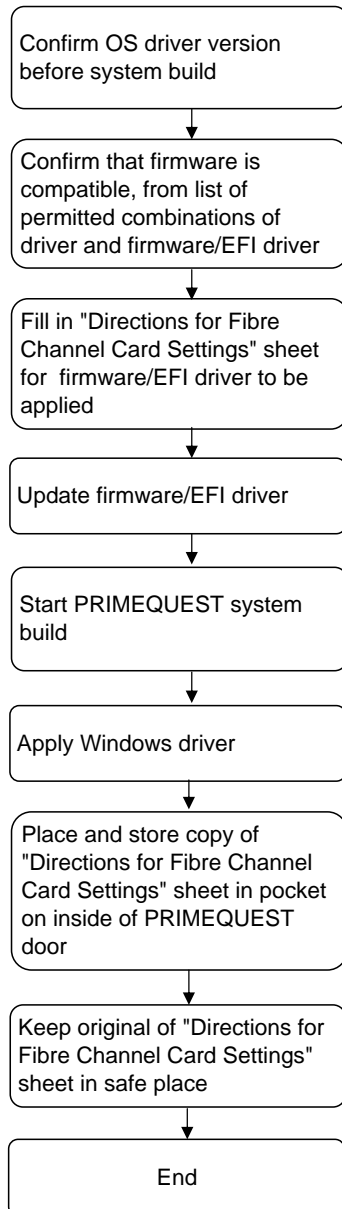
(2) Confirmation with an EFI tool (Emulex FC EFI-Bios Firmware Update Utility)

See Section 3.6.3-3 (or 3.6.9-3), "Confirm the version number before the update," in the section titled Fibre Channel Card Firmware/EFI driver Update Procedures in Detail."

Chapter 2 Application of Firmware/EFI driver

2.1 Flow for Setting Firmware/EFI driver Compatible with a Driver for Windows Server 2008

(1) PRIMEQUEST new installation

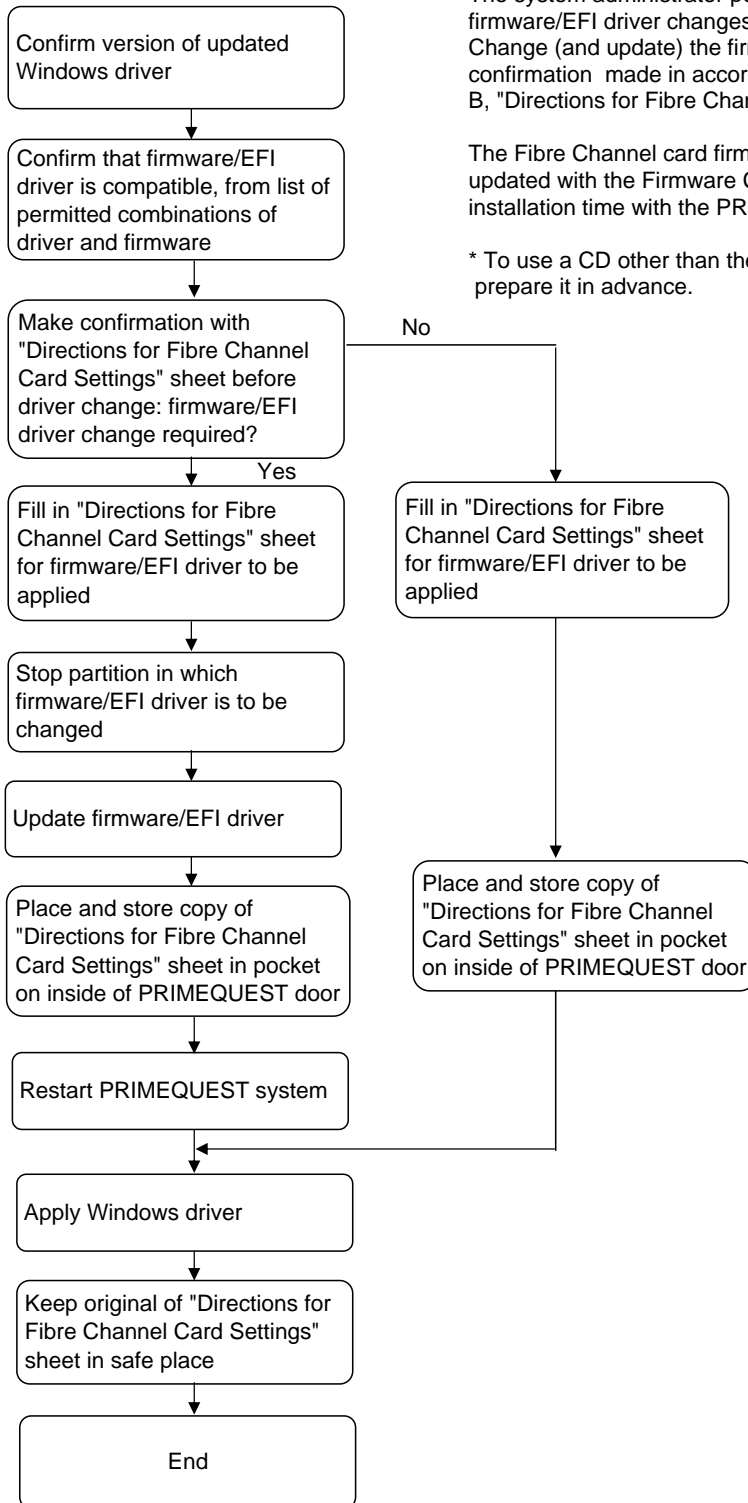


The system administrator performs the work for firmware/EFI driver changes.

Change (and update) the firmware/EFI driver, with confirmation made in accordance with Appendix B, "Directions for Fibre Channel Card Settings."

The Fibre Channel card firmware/EFI driver is updated with the Firmware CD supplied at the installation time with the PRIMEQUEST product.

(2) Fibre Channel driver change

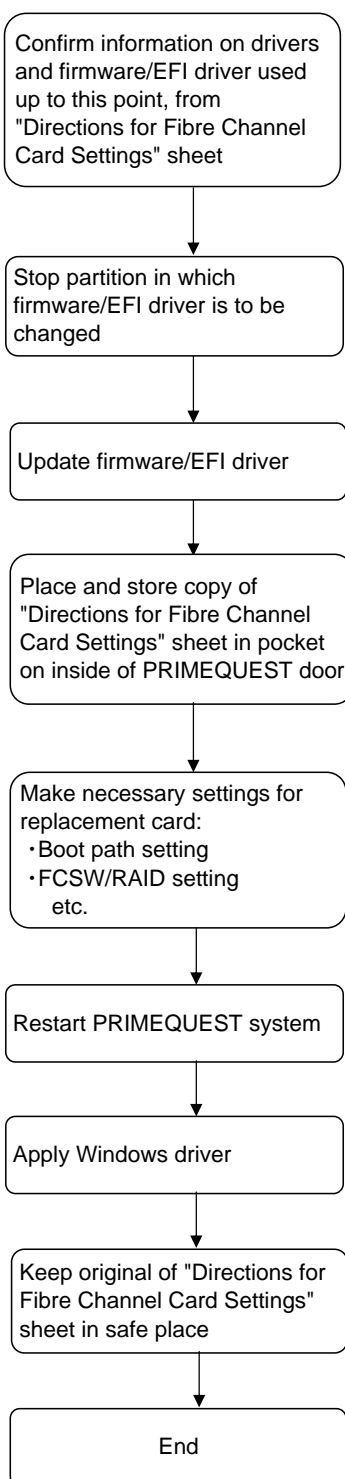


The system administrator performs the work for firmware/EFI driver changes.
Change (and update) the firmware/EFI driver, with confirmation made in accordance with Appendix B, "Directions for Fibre Channel Card Settings."

The Fibre Channel card firmware/EFI driver is updated with the Firmware CD supplied at the installation time with the PRIMEQUEST product.

* To use a CD other than the above Firmware CD, prepare it in advance.

(3) Fibre Channel card



The system administrator performs the work for firmware/EFI driver changes.
Change (and update) the firmware/EFI driver, with confirmation made in accordance with Appendix B, "Directions for Fibre Channel Card Settings."

The Fibre Channel card firmware/EFI driver is updated with the Firmware CD supplied at the installation time with the PRIMEQUEST product.
* To use a CD other than the above Firmware CD, prepare it in advance.

If the work for firmware/EFI driver changes is unnecessary in Fibre Channel card replacement (i.e., the card at the shipment time has firmware with the same revision number), this task is unnecessary.

Chapter 3 Fibre Channel Card Firmware/EFI driver Update Procedures

3.1 Preliminary Information

This chapter explains how to change the firmware/EFI driver for the Fibre Channel cards supplied for PRIMEQUEST servers.

The model names, purchasing numbers, and maintenance part numbers of the Fibre Channel cards are as follows:

- MC-08FC71 (CA06657-E311 / CA05950-1020) --- 2G FC PCI-X Dual Port
- MC-08FC31 (CA06657-E303 / CA05951-9610) --- 4G FC PCI-X Single Port
- MC-08FC41 (CA06657-E304 / CA05951-9611) --- 4G FC PCI-X Dual Port
- MC-08FC51 (CA06657-E305 / CA05951-9612) --- 4G FC PCI-Ex Single Port
- MC-08FC61 (CA06657-E306 / CA05951-9613) --- 4G FC PCI-Ex Dual Port
- MC-08FC81 (CA06657-E321 / CA05954-1010) --- 8G FC PCI-Ex SinglePort
- MC-08FC91 (CA06657-E322 / CA05954-1011) --- 8G FC PCI-Ex DualPort

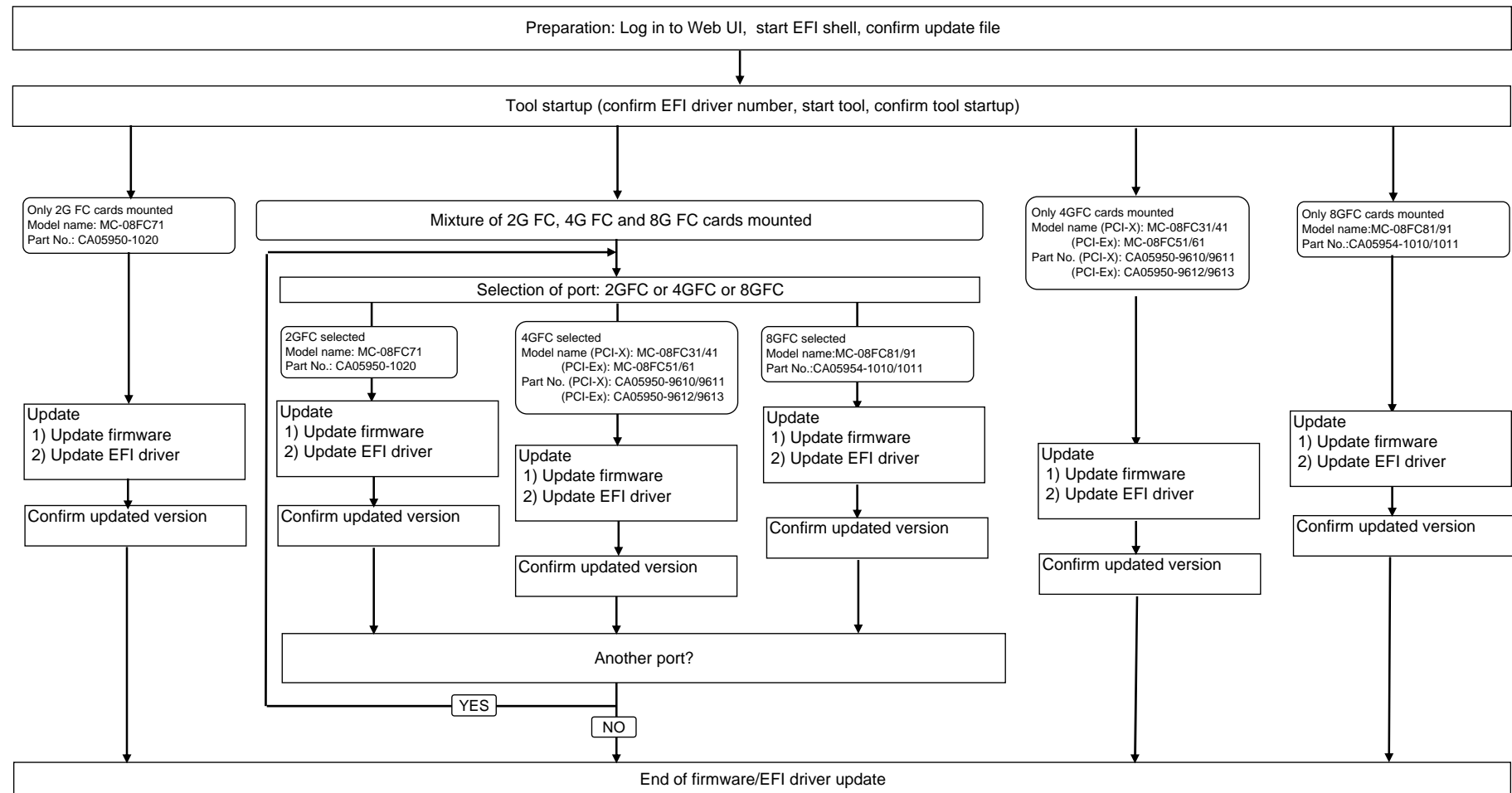
3.2 Required Setup

- (1) The control terminal must be able to perform Web-UI operations through terminal software or through the keyboard and monitor connected to the KVM interface of the PRIMEQUEST main unit.
- (2) Before beginning the work for firmware/EFI driver changes, confirm that the corresponding partition is in the standby state (in which its operation is stopped and only the power to its power supply circuit is still on).
- (3) Firmware/EFI driver is updated with the Firmware CD (C122-E018-XXC2).
 - * XX in "C122-E018-XXC2" represents an arbitrary value.
 - (For example, if XX is 26, it represents Version 26.)

3.3 Notes

- (1) An update tool that can run under the EFI shell is used to change firmware for the Fibre Channel cards.
Confirm the methods for operations in the section titled "Fibre Channel Firmware/EFI driver Update Procedures" and the subsequent section.
- (2) Firmware/EFI driver must be updated for every channel of the mounted Fibre Channel card.
 - Single port channel: MC-08FC31/51/71/81
→ Channels to update: One per Fibre Channel card
 - Dual port channel: MC-08FC41/61/91
→ Channels to update: Two per Fibre Channel card
- (3) The device names, firmware versions, EFI driver versions, directory structures, and file names that are described and displayed in screenshots in this manual are examples.
When changing firmware/EFI driver, read and interpret this information appropriate to your environment.

3.4 Flow for Updating Fibre Channel Card Firmware/EFI driver



3.5 Fibre Channel Card Firmware/EFI driver Update Procedures

Select work procedure 1 or work procedure 2.

| Item | Section | Work procedure 1 | Section | Work procedure 2 | Operations | Result |
|-------------------------|--|--|------------------------------|--|---|--------|
| Preparation | | Web-UI operations | | | | |
| | 3.6.1-1 | Connect to the Web-UI | | | Connect to Web-UI and enter Power Control mode. | |
| | 3.6.1-2 | Boot Control / power-on / selection of [DVD] | | | Perform setting Boot Control, power-on and selecting DVD. | |
| | | Confirmation of work terminal | | | | |
| | | Operation through KVM | | Operation through terminal software | | |
| | | | Console connection procedure | | Prepare to start work from console screens. | |
| | 3.6.1-3 | Start the EFI shell | 3.6.7-1 | Start the EFI shell | Select "EFI Shell [Built-in]" on the EFI startup screen. | |
| | 3.6.1-4 | Confirm the file system (fs) | 3.6.7-2 | Confirm the file system (fs) | Confirm the fs number assigned to the DVD-ROM drive. | |
| Tool startup | 3.6.1-5 | Confirm the Firmware CD | 3.6.7-3 | Confirm the Firmware CD | Move to the assigned fs location. Confirm that the Firmware CD is read by the ls command. | |
| | 3.6.2-1 | Confirm the EFI driver number for the Fibre Channel device | 3.6.8-1 | Confirm the EFI driver number for the Fibre Channel device | Confirm this with the drivers command (-b is the page display option). | |
| | 3.6.2-2 | Delete the EFI driver | 3.6.8-2 | Delete the EFI driver | Delete the EFI driver with unload command. | |
| | 3.6.2-3 | Confirm after the EFI driver delete | 3.6.8-3 | Confirm after the EFI driver delete | Confirm the unloaded EFI driver is deleted. | |
| | 3.6.2-4 | Add the EFI driver | 3.6.8-4 | Add the EFI driver | Load the newly updated EFI driver with load command | |
| | 3.6.2-5 | Confirm after the EFI driver load | 3.6.8-5 | Confirm after the EFI driver load | Confirm the loaded EFI driver is loaded. | |
| | 3.6.2-6 | Enter the command for startup | 3.6.8-6 | Enter the command for startup | Start the tool with the drvcfg command. | |
| | 3.6.2-7 | Confirm startup | 3.6.8-7 | Confirm startup | Confirm startup on the screen. | |
| Update | 3.6.3-1 | Select the adapter to be updated | 3.6.9-1 | Select the adapter to be updated | Select a listed adapter with the arrow keys. Note: Select one for every port of a Dual Port card. | |
| | 3.6.3-2 | Select "Firmware Update" | 3.6.9-2 | Select "Firmware Update" | Select "2. Firmware Update" with the arrow keys, and press [Enter] | *3 |
| | 3.6.3-3 | Confirm the version number before the update | 3.6.9-3 | Confirm the version number before the update | Confirm the version number at the beginning of the "Firmware" / "EFIBoot" line on the screen. | |
| | 3.6.3-4 | Perform the update | 3.6.9-4 | Perform the update | Specify the directory path and file name of the update file | *1 |
| | 3.6.3-5 | Complete the update procedure | 3.6.9-5 | Complete the update procedure | Press any key to complete the update process (which is followed by a return to the step in Section 3.6.3-2 or 3.6.9-2). | |
| Confirmation | 3.6.4-1 | Select "Firmware Update" | 3.6.10-1 | Select "Firmware Update" | Select "2. Firmware Update" with the arrow keys, and press [Enter] | |
| | 3.6.4-2 | Confirm the version number after the update | 3.6.10-2 | Confirm the version number after the update | Confirm the version number at the beginning of the "Firmware" / "EFIBoot" line on the screen. | *2 |
| Work on another adapter | 3.6.5 | Updating another adapter | 3.6.11 | Updating another adapter | Repeat the update work for any associated adapter. Note: Perform an update for every port of a Dual Port card. | |
| | Go back in the procedure to Section 3.6.3-2 or 3.6.9-2 to update another adapter | | | | | |
| Exiting EFI shell | 3.6.6-1 | Exit the tool | 3.6.12-1 | Exit the tool | Exit the tool after updating all corresponding adapters. | |
| | 3.6.6-2 | Enter "exit" in the EFI shell | 3.6.12-2 | Enter "exit" in the EFI shell | | |
| | 3.6.6-3 | Eject the Firmware CD | 3.6.12-3 | Eject the Firmware CD | Eject the Firmware CD from the KVM DVD-ROM drive. | |
| Terminating Web-UI | | Termination of Web-UI connection | | | | |
| | 3.6.13 | Setting "Power Off" for the partition | | | Set "Power Off" for the partition. | |

*1 Syntax error occurs: Repeat the steps starting from the step in Section 3.6.3-4 or 3.6.9-4.
 Execution error occurs: Repeat the steps starting from the step in Section 3.6.2-2 or 3.6.8-2.
 If the process takes more than one minute, treat it as an execution error since a normal process ends within several seconds

*2 Unexpected value occurs: Repeat the steps starting from the step in Section 3.6.2-2 or 3.6.8-2.

*3 The file name entered at the step explained in Section 3.6.3-4 or 3.6.9-4 is automatically selected for the firmware/EFI driver update.

3.6 Fibre Channel Card Firmware/EFI driver Update Procedures in Detail

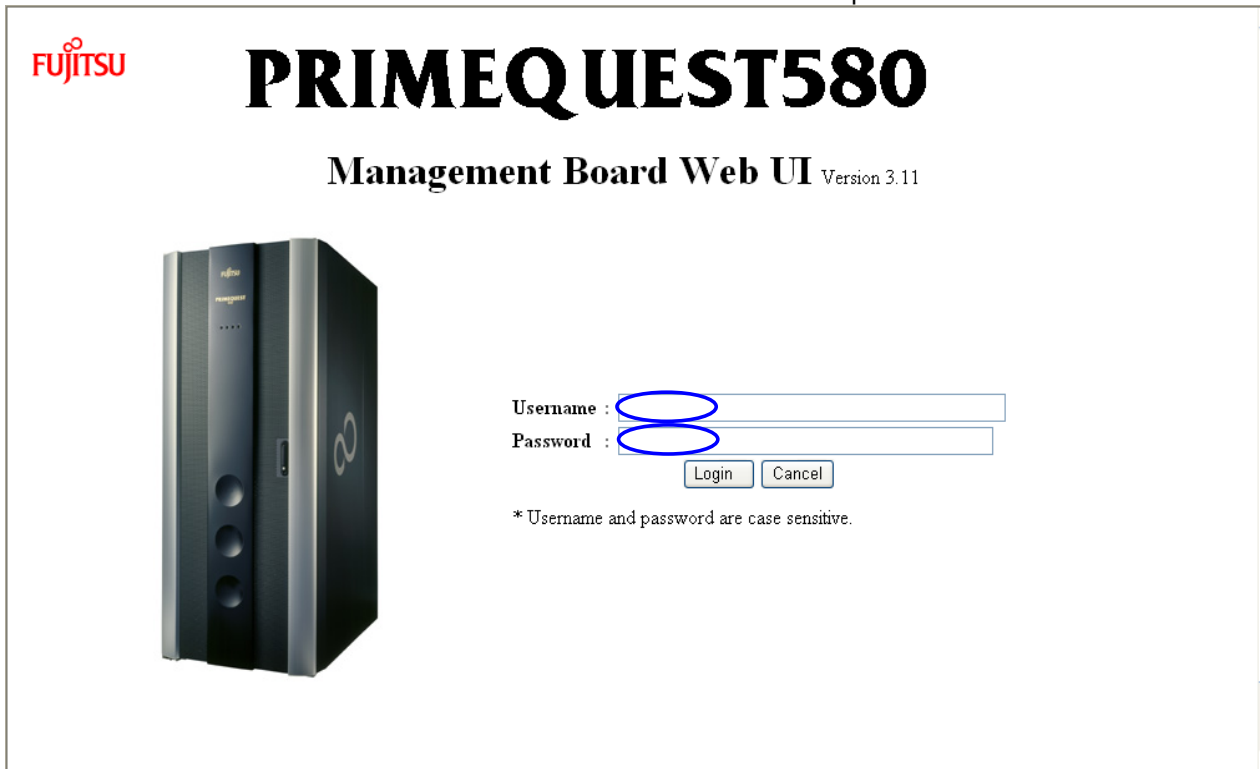
Preparation

3.6.1-1 Connect to the Web-UI

1) Connect to the Web-UI with the following Login URL:

http://<<MMB-IP>>:<<http-port-number>>

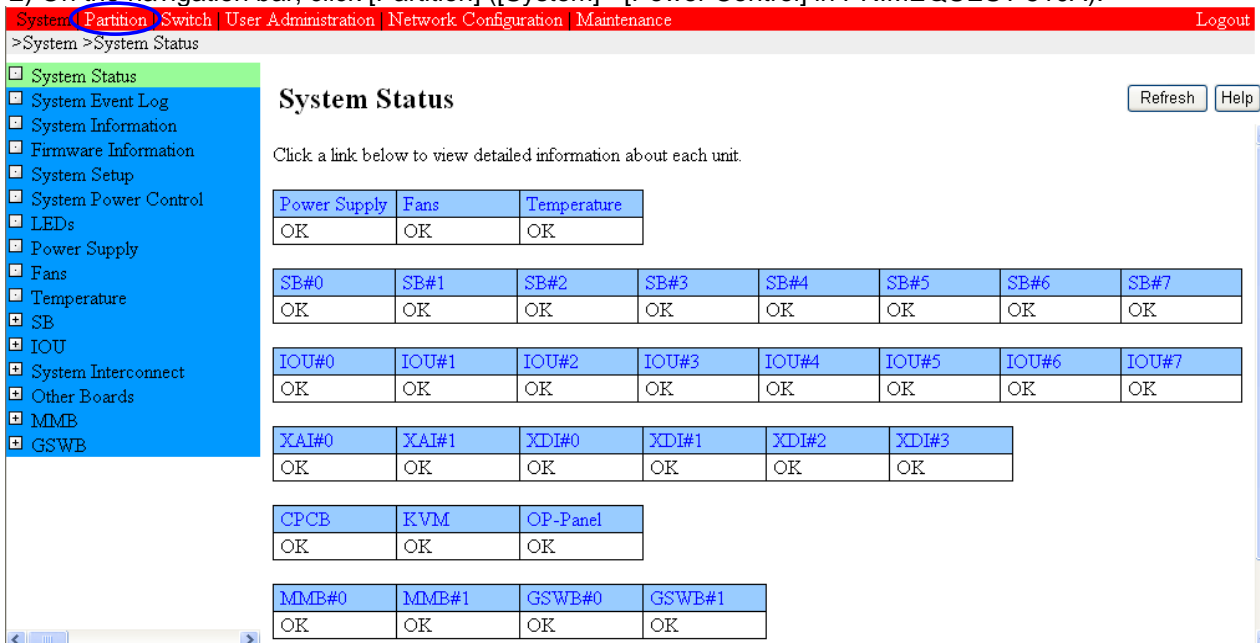
Username: Administrator account Password: Administrator account password



The image shows the login page of the PRIMEQUEST580 Management Board Web UI. At the top left is the Fujitsu logo. The title "PRIMEQUEST580" is in large, bold, black letters. Below it, "Management Board Web UI" is written in a smaller font, followed by "Version 3.11". On the left side, there is a 3D rendering of the server unit. On the right side, there are two input fields for "Username" and "Password". Both fields have a blue oval drawn around them. Below the password field are "Login" and "Cancel" buttons. A note at the bottom states: "* Username and password are case sensitive."

Login page (for preparations)

2) On the navigation bar, click [Partition] ([System] - [Power Control] in PRIMEQUEST 510A).



The image is a screenshot of the "System Status" page in the web UI. At the top, there is a red navigation bar with links: "System", "Partition" (which is circled in red), "Switch", "User Administration", "Network Configuration", and "Maintenance". A "Logout" link is on the far right. Below the navigation bar, the breadcrumb path ">System >System Status" is shown. On the left, there is a blue sidebar menu with various system components listed, including "System Status", "System Event Log", "System Information", "Firmware Information", "System Setup", "System Power Control", "LEDs", "Power Supply", "Fans", "Temperature", "SB", "IOU", "System Interconnect", "Other Boards", "MMB", and "GSWB". The main content area is titled "System Status" and includes a "Refresh" and "Help" button. Below the title, there is a text prompt: "Click a link below to view detailed information about each unit." This is followed by several tables showing the status of various components, all of which are "OK".

| Power Supply | Fans | Temperature |
|--------------|------|-------------|
| OK | OK | OK |

| SB#0 | SB#1 | SB#2 | SB#3 | SB#4 | SB#5 | SB#6 | SB#7 |
|------|------|------|------|------|------|------|------|
| OK | OK | OK | OK | OK | OK | OK | OK |

| IOU#0 | IOU#1 | IOU#2 | IOU#3 | IOU#4 | IOU#5 | IOU#6 | IOU#7 |
|-------|-------|-------|-------|-------|-------|-------|-------|
| OK | OK | OK | OK | OK | OK | OK | OK |

| XAI#0 | XAI#1 | XDI#0 | XDI#1 | XDI#2 | XDI#3 |
|-------|-------|-------|-------|-------|-------|
| OK | OK | OK | OK | OK | OK |

| CPCB | KVM | OP-Panel |
|------|-----|----------|
| OK | OK | OK |

| MMB#0 | MMB#1 | GSWB#0 | GSWB#1 |
|-------|-------|--------|--------|
| OK | OK | OK | OK |

System Status page

- 3) Go to the Partition > Power Control page (System > Power Control page in PRIMEQUEST 510A), and confirm the information there.

System | Partition | Switch | User Administration | Network Configuration | Maintenance Logout

>Partition >Power Control

Power Control

Refresh Help

Select a Power Control option for one or more partitions, then click the Apply button to take effect.

| # | Partition Name | Status | Power Status | System Progress | Power Control | Force Power Off Delay |
|----|----------------|--------|--------------|-----------------|-----------------|---|
| 0 | Partition#0 | OK | On | OS Running | (Not specified) | <input type="checkbox"/> <input type="checkbox"/> min |
| 2 | Partition#2 | OK | Standby | Power Off | (Not specified) | <input type="checkbox"/> <input type="checkbox"/> min |
| 3 | Partition#3 | OK | Standby | Power Off | (Not specified) | <input type="checkbox"/> <input type="checkbox"/> min |
| 4 | Partition#4 | OK | Standby | Power Off | (Not specified) | <input type="checkbox"/> <input type="checkbox"/> min |
| 6 | Partition#6 | OK | On | OS Running | (Not specified) | <input type="checkbox"/> <input type="checkbox"/> min |
| 8 | Partition#8 | OK | On | OS Running | (Not specified) | <input type="checkbox"/> <input type="checkbox"/> min |
| 10 | Partition#10 | OK | Standby | Power Off | (Not specified) | <input type="checkbox"/> <input type="checkbox"/> min |
| 12 | Partition#12 | OK | Standby | Power Off | (Not specified) | <input type="checkbox"/> <input type="checkbox"/> min |
| 14 | Partition#14 | OK | On | OS Running | (Not specified) | <input type="checkbox"/> <input type="checkbox"/> min |

Apply Cancel

Partition > Power Control page

*PRIMEQUEST 510A

System | User Administration | Network Configuration | Maintenance Logout

>System >Power Control

Power Control

Refresh Help

Select a Power Control option, then click the Apply button to take effect.

| | |
|--------------------------|--|
| Status | OK |
| Power Status | On |
| System Progress | OS Running |
| Power Control | Power Off (Not specified) |
| Force Power Off Delay | <input type="checkbox"/> <input type="checkbox"/> min |
| Boot Selector | No Override Note: The Boot Selector only applies for one system restart. After the system restart, this setting returns to "No Override" automatically. |
| POST(Power On Self Test) | Fast Boot |

Apply Cancel

System > Power Control page

3.6.1-2 Change the boot control mode

- 1) Select the partition of the Fibre Channel card whose firmware is to be updated. Click [Boot Control].
(In PRIMEQUEST 510A, this procedure is unnecessary.)

System | Partition | Switch | User Administration | Network Configuration | Maintenance | Logout

>Partition >Partition#12 >Boot Control

Power Control
Schedule
USB/Video/DVD Switch
Console Redirection Switch
Partition Configuration
Split Configuration
Reserved SB Configuration
Partition#0
Partition#2
Partition#3
Partition#4
Partition#6
Partition#8
Partition#10
Partition#12
 Information
 Boot Control
 ASR Control
 Console Redirection
 Mode
 PSA
Partition#14

Boot Control

Click the Apply Button to apply all changes.

| | |
|--------------------------|---|
| Boot Selector | No Override Note: The boot Selector only applies for one partition restart. After the partition restart, this setting returns to 'No Override' automatically. |
| POST(Power On Self Test) | Standard Diagnosis |

Apply Cancel

Partition > Boot Control page

- 2) Select a Boot Selector mode.

Set "Force boot into EFI Boot Manager" as the Boot Selector mode, and click <Apply>.
(This prevents automatic startup with an arbitrary OS (the one selected by the cursor position) when the Wait Count time (default: 30 seconds) has elapsed on the EFI shell startup screen.)

Note: This "Force boot into EFI Boot Manager" setting for a partition is cleared when the partition is started. It must be set again each time that the Fibre Channel firmware/EFI driver is updated.

System | Partition | Switch | User Administration | Network Configuration | Maintenance | Logout

>Partition >Partition#12 >Boot Control

Power Control
Schedule
USB/Video/DVD Switch
Console Redirection Switch
Partition Configuration
Split Configuration
Reserved SB Configuration
Partition#0
Partition#2
Partition#3
Partition#4
Partition#6
Partition#8
Partition#10
Partition#12
 Information
 Boot Control
 ASR Control
 Console Redirection
 Mode
 PSA
Partition#14

Boot Control

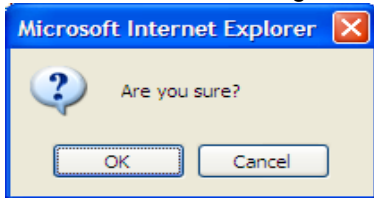
Click the Apply Button to apply all changes.

| | |
|--------------------------|--|
| Boot Selector | Force boot into EFI Boot Manager Note: The boot Selector only applies for one partition restart. After the partition restart, this setting returns to 'No Override' automatically. |
| POST(Power On Self Test) | Standard Diagnosis |

Apply Cancel

Partition > Boot Control page (with the Boot Selector setting)

In the confirmation dialog box, click <OK>.



In the completion dialog box, click <OK>.



- 3) On the Partition > Power Control page (System > Power Control page in PRIMEQUEST 510A), turn on the power to the partition. [Part 1]
On the navigation bar, click [Partition].

[System](#) | [Partition](#) | [Switch](#) | [User Administration](#) | [Network Configuration](#) | [Maintenance](#) [Logout](#)

>Partition >Power Control

☐ Power Control

☐ Schedule

☐ USB/Video/DVD Switch

☐ Console Redirection Switch

☐ Partition Configuration

☐ Split Configuration

☐ Reserved SB Configuration

☐ Partition#0

☐ Partition#2

☐ Partition#3

☐ Partition#4

☐ Partition#6

☐ Partition#8

☐ Partition#10

☐ Partition#12

☐ Partition#14

Power Control

Select a Power Control option for one or more partitions, then click the Apply button to take effect.

| # | Partition Name | Status | Power Status | System Progress | Power Control | Force Power Off Delay |
|----|----------------|--------|--------------|-----------------|-------------------|---|
| 0 | Partition#0 | OK | On | OS Running | (Not specified) ▾ | <input type="checkbox"/> <input type="checkbox"/> min |
| 2 | Partition#2 | OK | Standby | Power Off | (Not specified) ▾ | <input type="checkbox"/> <input type="checkbox"/> min |
| 3 | Partition#3 | OK | Standby | Power Off | (Not specified) ▾ | <input type="checkbox"/> <input type="checkbox"/> min |
| 4 | Partition#4 | OK | Standby | Power Off | (Not specified) ▾ | <input type="checkbox"/> <input type="checkbox"/> min |
| 6 | Partition#6 | OK | On | OS Running | (Not specified) ▾ | <input type="checkbox"/> <input type="checkbox"/> min |
| 8 | Partition#8 | OK | On | OS Running | (Not specified) ▾ | <input type="checkbox"/> <input type="checkbox"/> min |
| 10 | Partition#10 | OK | Standby | Power Off | (Not specified) ▾ | <input type="checkbox"/> <input type="checkbox"/> min |
| 12 | Partition#12 | OK | Standby | Power Off | (Not specified) ▾ | <input type="checkbox"/> <input type="checkbox"/> min |
| 14 | Partition#14 | OK | On | OS Running | (Not specified) ▾ | <input type="checkbox"/> <input type="checkbox"/> min |

Partition > Power Control page

- 4) On the Partition > Power Control page (System > Power Control page in PRIMEQUEST 510A), turn on the power to the partition. [Part 2]
Set [Power On] in the appropriate Power Control list box, and click <Apply>.

System | Partition | Switch | User Administration | Network Configuration | Maintenance Logout

>Partition >Power Control

Power Control

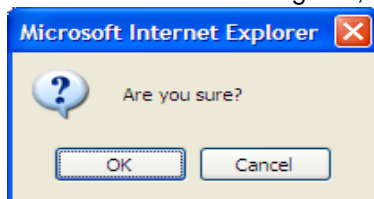
Select a Power Control option for one or more partitions, then click the Apply button to take effect.

| # | Partition Name | Status | Power Status | System Progress | Power Control | Force Power Off Delay |
|----|----------------|--------|--------------|-----------------|-----------------|-----------------------|
| 0 | Partition#0 | OK | On | OS Running | (Not specified) | min |
| 2 | Partition#2 | OK | Standby | Power Off | (Not specified) | min |
| 3 | Partition#3 | OK | Standby | Power Off | (Not specified) | min |
| 4 | Partition#4 | OK | Standby | Power Off | (Not specified) | min |
| 6 | Partition#6 | OK | On | OS Running | (Not specified) | min |
| 8 | Partition#8 | OK | On | OS Running | (Not specified) | min |
| 10 | Partition#10 | OK | Standby | Power Off | (Not specified) | min |
| 12 | Partition#12 | OK | Standby | Power Off | Power On | min |
| 14 | Partition#14 | OK | On | OS Running | (Not specified) | min |

Apply Cancel

Partition > Power Control page ("Power On" set)

In the confirmation dialog box, click <OK>.



- 5) On the Partition > Power Control page (System > Power Control page in PRIMEQUEST 510A), turn on the power to the partition. [Part 3]
Confirm that the partition has "Power On In Progress" displayed in the System Progress column after "Power On" is set.

System | Partition | Switch | User Administration | Network Configuration | Maintenance Logout

>Partition >Power Control

Power Control

Select a Power Control option for one or more partitions, then click the Apply button to take effect.

| # | Partition Name | Status | Power Status | System Progress | Power Control | Force Power Off Delay |
|----|----------------|--------|--------------|----------------------|-----------------|-----------------------|
| 0 | Partition#0 | OK | On | OS Running | (Not specified) | min |
| 2 | Partition#2 | OK | Standby | Power Off | (Not specified) | min |
| 3 | Partition#3 | OK | Standby | Power Off | (Not specified) | min |
| 4 | Partition#4 | OK | Standby | Power Off | (Not specified) | min |
| 6 | Partition#6 | OK | On | OS Running | (Not specified) | min |
| 8 | Partition#8 | OK | On | OS Running | (Not specified) | min |
| 10 | Partition#10 | OK | Standby | Power Off | (Not specified) | min |
| 12 | Partition#12 | OK | Standby | Power On In Progress | (Not specified) | min |
| 14 | Partition#14 | OK | On | OS Running | (Not specified) | min |

Apply Cancel

Partition > Power Control page ("Power On" operation started)

- 6) On the Partition > Power Control page (System > Power Control page in PRIMEQUEST 510A), turn on the power to the partition. [Part 4]
Confirm that the partition has "POST 1094h" displayed finally in the System Progress column after "Power On" is set.

System | Partition | Switch | User Administration | Network Configuration | Maintenance | Logout

>Partition >Power Control

Power Control Refresh Help

Select a Power Control option for one or more partitions, then click the Apply button to take effect.

| # | Partition Name | Status | Power Status | System Progress | Power Control | Force Power Off Delay |
|----|----------------|--------|--------------|-----------------|-----------------|------------------------------|
| 0 | Partition#0 | OK | On | OS Running | (Not specified) | <input type="checkbox"/> min |
| 2 | Partition#2 | OK | Standby | Power Off | (Not specified) | <input type="checkbox"/> min |
| 3 | Partition#3 | OK | Standby | Power Off | (Not specified) | <input type="checkbox"/> min |
| 4 | Partition#4 | OK | Standby | Power Off | (Not specified) | <input type="checkbox"/> min |
| 6 | Partition#6 | OK | On | OS Running | (Not specified) | <input type="checkbox"/> min |
| 8 | Partition#8 | OK | On | OS Running | (Not specified) | <input type="checkbox"/> min |
| 10 | Partition#10 | OK | Standby | Power Off | (Not specified) | <input type="checkbox"/> min |
| 12 | Partition#12 | OK | On | POST 1094h | (Not specified) | <input type="checkbox"/> min |
| 14 | Partition#14 | OK | On | OS Running | (Not specified) | <input type="checkbox"/> min |

Apply Cancel

Partition > Power Control page ("Power On" operation completed)

- 7) Select [DVD].
On the Partition > USB/Video/DVD Switch page, select the USB/Video/DVD switch for this partition, and click <Apply>.
Never make this change during firmware/EFI driver update processing.
Note: Write down the current setting in order to restore the setting after the firmware/EFI driver update.
(In PRIMEQUEST 510A, this procedure is unnecessary.)

System | Partition | Switch | User Administration | Network Configuration | Maintenance | Logout

>Partition >USB/Video/DVD Switch

USB/Video/DVD Switch Help

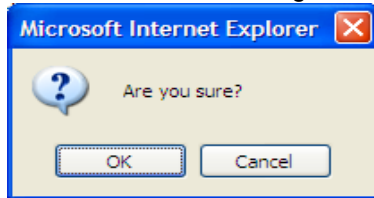
Select partition to connect USB, Video, or DVD respectively, then click the Apply button to take effect.

| # | Partition Name | Status | Power Status | USB | Video | DVD |
|------|----------------|--------|--------------|----------------------------------|----------------------------------|----------------------------------|
| 0 | Partition#0 | OK | On | <input type="radio"/> | <input type="radio"/> | <input type="radio"/> |
| 2 | Partition#2 | OK | Standby | <input type="radio"/> | <input type="radio"/> | <input type="radio"/> |
| 3 | Partition#3 | OK | Standby | <input type="radio"/> | <input type="radio"/> | <input type="radio"/> |
| 4 | Partition#4 | OK | Standby | <input type="radio"/> | <input type="radio"/> | <input type="radio"/> |
| 6 | Partition#6 | OK | On | <input type="radio"/> | <input type="radio"/> | <input type="radio"/> |
| 8 | Partition#8 | OK | On | <input type="radio"/> | <input type="radio"/> | <input type="radio"/> |
| 10 | Partition#10 | OK | Standby | <input type="radio"/> | <input type="radio"/> | <input type="radio"/> |
| 12 | Partition#12 | OK | On | <input checked="" type="radio"/> | <input checked="" type="radio"/> | <input checked="" type="radio"/> |
| 14 | Partition#14 | OK | On | <input type="radio"/> | <input type="radio"/> | <input type="radio"/> |
| Free | | | | <input type="radio"/> | <input type="radio"/> | <input type="radio"/> |

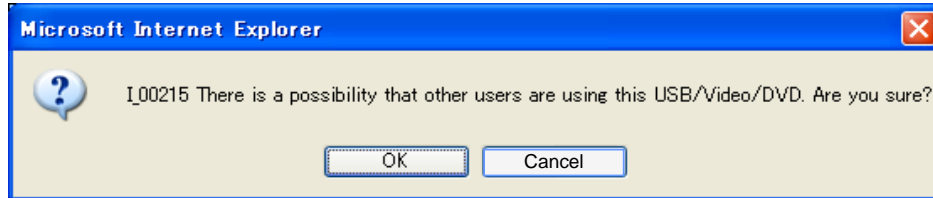
Apply Cancel

Partition > USB/Video/DVD Switch page (DVD switch selection)

In the confirmation dialog box, click <OK>.



In another confirmation dialog box, click <OK>.



In the completion dialog box, click <OK>.



8) Insert the Firmware CD into the DVD-ROM drive.

Preparation (Continued) ** Operation through KVM **

3.6.1-3 Start the EFI shell

From the Boot Option Maintenance menu for EFI displayed on the flat panel display screen, select "EFI Shell [Built-in]," and press the [Enter] key.

"EFI Shell [Built-in]" selected on the terminal software screen

```
EFI Boot Manager ver 1.10 [1.13]

Please select a boot option

Windows Server 2003, Datacenter
EFI Shell [Built-in]
DVD/Acpi (PNP0A03, 0)/Pci (1D|1)/Usb (0, 0)/Usb (1, 0)
Network/Acpi (PNP0A03, 0)/Pci (1E|0)/Pci (8|0)/Mac (000B5D6F801B)
Boot Option Maintenance
Setup Menu

Use ^ and v to change option(s). Use Enter to select an option
```

* Screenshot of the screen (The displayed menu varies depending on the user's settings.)

3.6.1-4 Confirm the file system (fs)

The next screen displayed is as shown below.

Confirm the fsN value assigned to the Firmware CD (here, it is fs0).

```
Loading.: EFI Shell [Built-in]
EFI Shell version 1.10 [1.13]
Device mapping table
fs0 : Acpi (PNP0A03, 0)/Pci (1D|1)/Usb (0, 0)/Usb (0, 0)/CDROM (Entry0)/HD (Part1, Sig00000000)
fs1 : Acpi (PNP0A03, 0)/Pci (1|1)/Pci (0|0)/Pci (1|0)/Scsi (Pun4, Lun0)/HD (Part1, Sig
41C4C48E-7253-4942-9F50-5547C7B1E6C4)
blk0 : Acpi (PNP0A03, 0)/Pci (1D|1)/Usb (0, 0)/Usb (0, 0)
blk1 : Acpi (PNP0A03, 0)/Pci (1D|1)/Usb (0, 0)/Usb (0, 0)/CDROM (Entry0)
*** : *****
blk6 : Acpi (PNP0A03, 0)/Pci (1|1)/Pci (0|0)/Pci (1|0)/Scsi (Pun4, Lun0)/HD (Part3, Sig
715930EE-C30D-481F-BC83-83F17A640F30)

Shell>
```

If the fs number of the CD is not found:

Enter the following command from the EFI shell to reconnect the device.

shell> reconnect -r[Enter]

Upon the return to the EFI shell screen, enter the following command to display the device map again, and confirm the fs number assigned to the CD:

shell> map -r[Enter]

3.6.1-5 Confirm the Firmware CD

Move to the location indicated by the fs number assigned to the CD. Confirm that the CD is read normally by the ls command.

```
Shell>fs0:
fs0:>ls
Directory of: fs0:\

03/10/08 01:42a          4,224 README. ja_JP. EUC. txt
03/10/08 01:42a          4,350 README. ja_JP. SJIS. txt
03/10/08 01:42a          4,922 README. ja_JP. UTF-8. txt
03/10/08 01:42a          4,596 README. txt
03/24/08 03:54p <DIR>          2,048 PQ420
03/24/08 03:55p <DIR>          2,048 PQ480_440
03/24/08 03:55p <DIR>          2,048 PQ510A
03/24/08 03:56p <DIR>          2,048 PQ520
03/24/08 03:56p <DIR>          2,048 PQ520A_520X
03/24/08 03:57p <DIR>          2,048 PQ580_540
03/24/08 04:04p <DIR>          2,048 PQ580A_540A
          4 File(s)          18,092 bytes
          7 Dir(s)
```

Tool Startup

3.6.2-1 Confirm the EFI driver number for the Fibre Channel device

```
fs0:\> drivers -b
          T      D
D          Y C I
R          P F A
V VERSION E G G #D #C DRIVER NAME          IMAGE NAME
== ===== = = = == == =====
18 00000010 B - - 5 42 Pci Bus Driver
** *****
** *****
22 00031131 D X X 2 - Emulex SCSI Pass Thru Driver  PciRom Seg=000000
** ***** *
```

Confirm the numerical value NN at the beginning of the "Emulex SCSI Pass Thru Driver" line (here, it is 22).

Notes:

1. The value in the IMAGE NAME column varies depending on the EFI Driver version.
2. Even if "Emulex SCSI Pass Thru Driver" is displayed on multiple lines with different version numbers, confirm all of the numerical values NN at the beginning.

3.6.2-2 Delete the EFI driver

Delete all of the target EFI drivers with unload command.

```
fs0:\> unload 22
```

The number entered after "unload" is the numerical value confirmed in the step explained in Section 3.6.2-1.

```
fs0:\> unload 22
22: Image(PciRom Seg=00000000 Bus=29 Dev=01 Func=01 Image=0000) DriverBinding C
omponentName Configuration Diagnostics
Unload protocol image (y/n)? y
```

It asks "Unload protocol image (y/n)?". Delete it by inputting y and pushing Enter.
If there are plural target EFI drivers, delete all of them with unload command.

3.6.2-3 Confirm after the EFI driver delete

Confirm the unloaded EFI driver is deleted.

```
fs0:\> drivers -b
          T   D
D         Y C I
R         P F A
V  VERSION E G G #D #C DRIVER NAME          IMAGE NAME
== ===== = = = == == =====
18 00000010 B - - 5 42 Pci Bus Driver
** *****
** *****
22 02000600 D X X 2 - LSI Logic Fusion MPT SAS Driver PciRom Seg=000000
** ***** *
```

3.6.2-4 Add the EFI driver

Load the newly updated EFI driver with load command.

```
fs0:\> load \PQ580A_540A\Emulex_FC\EFI_tool\Elxcli400A1.efi
```

As for the directory of the EFI driver, refer to "Appendix A Lists of the Folder Hierarchy on the Firmware CD".

*An EFI driver is loaded as TOOL on PRIMEQUEST system, it is not set to FC card.
Setting to FC card is performed in Section 3.6.3-1.

Confirm the EFI driver is loaded correctly by the following message being displayed.

```
fs0:\> load \PQ580A_540A\Emulex_FC\EFI_tool\Elxcli400A1.efi
load: Image fs0: \PQ580A_540A\Emulex_FC\EFI_tool\Elxcli400A1.efi loaded at
0x7EFB4000 - Success
```

"0x7EFB4000" on the screen is a numerical value of an example.

3.6.2-5 Confirm after the EFI driver load

```
fs0:\> drivers -b
          T   D
D         Y C I
R         P F A
V  VERSION E G G #D #C DRIVER NAME          IMAGE NAME
== ===== = = = == == =====
18 00000010 B - - 5 42 Pci Bus Driver
** *****
** *****
9A 00040011 B X X 2 1 Emulex SCSI Pass Thru Driver  elxcli400a1.efi
```

Confirm the EFI driver(here, it is elxcli400a1.efi) which is loaded in Section 3.6.2-4 is added in "IMAGE NAME".

Confirm the numerical value NN at the beginning of the "Emulex SCSI Pass Thru Driver" line (here, it is 9A).

*Perform the following update operation after performing above EFI driver additional operation.
If it is not performed, FC card may not run normally.

3.6.2-6 Enter the command for startup

```
fs0:\> drvcfg -s 9A
```

The number entered after "-s" is the numerical value (NN) confirmed in the step explained in Section 3.6.2-5.

3.6.2-7 Confirm startup

Based on the screen displayed for startup, such as shown below, confirm that the tool has started.

```
-----  
Emulex Fibre Channel EFI-Bios Utility, Ver: 4.00A1  
-----  
  
Emulex Adapters in this System: 001 thru 002  
  
001: LP11002-M4      PCI-X  133MHz      Seg#: 00 Bus#: CB Dev#: 01 Func#: 00  
002: LP11002-M4      PCI-X  133MHz      Seg#: 00 Bus#: CB Dev#: 01 Func#: 01
```

In the above screenshot, the system is equipped with one 4G (Dual Port) Fibre Channel adapter card.
Depending on the Fibre Channel adapter card equipped with, the card is displayed on two lines, with "Func#00" on the first (top) line and "Func#:01" on the second (bottom) line.

Update

3.6.3-1 Select the adapter to be updated

If the card is a Dual Port card, apply the update to every port (Func#: xx) displayed.
Select the adapter with the up (↑) and down (↓) arrow keys, and press [Enter].

```
-----
Emulex Fibre Channel EFI-Bios Utility, Ver: 4.00A1
-----

Emulex Adapters in this System: 001 thru 002

001: LP11002-M4      PCI-X  133MHz      Seg#: 00 Bus#: CB Dev#: 01 Func#: 00
002: LP11002-M4      PCI-X  133MHz      Seg#: 00 Bus#: CB Dev#: 01 Func#: 01
```

Note: Each page of the screen displays lines for up to eight ports. To change the page for a system that has nine or more ports, use the right (<-->) and left (-->) arrow keys.

3.6.3-2 Select "Firmware Update"

```
-----
Emulex Fibre Channel EFI-Bios Utility, Ver: 4.00A1
-----

001: LP11002-M4      PCI-X  133MHz      Seg#: 00 Bus#: CB Dev#: 01 Func#: 00
      HBA Status: Ready      Boot Bios : Enabled
      EFI Boot : BE3.11X1      Firmware  : BS2.70A5
-----

1. Setup Utility
2. Firmware Update
```

Select "2. Firmware Update" with the up (↑) and down (↓) arrow keys, and press [Enter].
The following screen is displayed.

```
-----
Emulex Fibre Channel EFI-Bios Utility, Ver: 4.00A1
-----

001: LP11002-M4      PCI-X  133MHz      Seg#: 00 Bus#: CB Dev#: 01 Func#: 00
      HBA Status: Ready      Boot Bios : Enabled
      EFI Boot : BE3.11X1      Firmware  : BS2.70A5
-----

1. Update Selected Adapter
2. Batch Mode Update
```

Select "1. Update Selected Adapter" with the up (↑) and down (↓) arrow keys, and press [Enter].
The following screen is displayed.

```
-----
Emulex Fibre Channel EFI-Bios Utility, Ver: 4.00A1
-----

001: LP11002-M4      PCI-X  133MHz      Seg#: 00 Bus#: CB Dev#: 01 Func#: 00
      EFI Boot : **3.11X1      SLI - 2 : B2F2.70A5
      Firmware : **2.70A5      SLI - 3 : B3F2.70A5
      Port Name : 10000000C9537FB2 Kernel   : 1.20A1
-----

Directry Path      :
```

3.6.3-3 Confirm the version number before the update

Note: The first two characters in each version number vary depending on the adapter card. The characters are represented by "***" in the following explanation.

Confirm the version number on the "Firmware" or "EFI Boot" line before the update.

Number displayed at "Firmware" for confirmation: **2.70A5 (in this example)

Number displayed at "EFI Boot" for confirmation: **3.11X1 (in this example)

3.6.3-4 Perform EFI/Firmware Update

Specify the directory path (fs* is unnecessary), and press [Enter]. Specify the file name on the next line, and press [Enter].

If the specified path is incorrect, press [Enter] to go back to that line, and repeat this operation.

For the folder hierarchy of each adapter card, see Appendix A, "Lists of the Folder Hierarchy on the Firmware CD."

```
-----
Emulex Fibre Channel EFI-Bios Utility, Ver: 4.00A1
-----
001: LP11002-M4      PCI-X 133MHz      Seg#: 00 Bus#: CB Dev#: 01 Func#: 00
      EFI Boot : **3.11X1      SLI - 2 : B2F2.70A5
      Firmware : **2.70A5      SLI - 3 : B3F2.70A5
      Port Name : 10000000C9537FB2 Kernel : 1.20A1
-----
      Directry Path      : \PQ580A_540A\Emulex_FC\MC08FC31\EFI_4.00A1
      Filename           : BE400A1.PRG
```

<Update the EFI driver>

The following screen is displayed. The update is completed.

```
      Directry Path      : \PQ580A_540A\Emulex_FC\MC08FC31\EFI_4.00A1
      Filename           : BE400A1.PRG
      File Open          : Done
      Validate Adapter   : Done
      Flash Erase        : Done
      Flash Program      : Done
      WakeUp Parameter   : Updated
      Press any Key to Return to Previous Menu ...
```

* Firmware update and EFI driver update are the same procedures.

Firmware and EFI driver are decided by the appointed "Directry Path" and "Filename".

<Update the firmware>

The following screen is displayed. The update is completed.

```
      Directry Path      : \PQ580A_540A\Emulex_FC\MC08FC31\Firm_2.80A4
      Filename           : bd280a4.all
      File Open          : Done
      Validate Adapter   : Done
      Flash Erase        : Done
      Flash Program      : Done
      WakeUp Parameter   : Updated
      Press any Key to Return to Previous Menu ...
```

3.6.3-5 Complete the update procedure

Press any key to return to the screen displayed for the step in Section 3.6.3-2.

```
-----
Emulex Fibre Channel EFI-Bios Utility, Ver: 4.00A1
-----
001: LP11002-M4      PCI-X  133MHz      Seg#: 00 Bus#: CB Dev#: 01 Func#: 00
      HBA Status: Ready      Boot Bios : Enabled
      EFI  Boot : BE4.00A1      Firmware  : BS2.80A4
-----

1. Update Selected Adapter
2. Batch Mode Update
```

Press Esc key twice to return to the screen displayed for the step in Section 3.6.3-1.

```
-----
Emulex Fibre Channel EFI-Bios Utility, Ver: 4.00A1
-----

Emulex Adapters in this System: 001 thru 002

001: LP11002-M4      PCI-X  133MHz      Seg#: 00 Bus#: CB Dev#: 01 Func#: 00
002: LP11002-M4      PCI-X  133MHz      Seg#: 00 Bus#: CB Dev#: 01 Func#: 01
```

Confirmation

3.6.4-1 Select "Firmware Update"

```
-----
Emulex Fibre Channel EFI-Bios Utility, Ver: 4.00A1
-----
001: LP11002-M4      PCI-X  133MHz      Seg#: 00 Bus#: CB Dev#: 01 Func#: 00
      HBA Status: Ready      Boot Bios : Enabled
      EFI  Boot : BE4.00A1      Firmware  : BS2.80A4
-----

1. Setup Utility
2. Firmware Update
```

Select "2. Firmware Update" with the up (↑) and down (↓) arrow keys, and press [Enter]. The following screen is displayed.

```
-----
Emulex Fibre Channel EFI-Bios Utility, Ver: 4.00A1
-----
001: LP11002-M4      PCI-X  133MHz      Seg#: 00 Bus#: CB Dev#: 01 Func#: 00
      HBA Status: Ready      Boot Bios : Enabled
      EFI  Boot : BE4.00A1      Firmware  : BS2.80A4
-----

1. Update Selected Adapter
2. Batch Mode Update
```

Select "1. Update Selected Adapter" with the up (↑) and down (↓) arrow keys, and press [Enter]. The following screen is displayed.

```
-----
Emulex Fibre Channel EFI-Bios Utility, Ver: 4.00A1
-----
001: LP11002-M4      PCI-X  133MHz      Seg#: 00 Bus#: CB Dev#: 01 Func#: 00
      EFI  Boot : **4.00A1      SLI - 2  : B2F2.80A4
      Firmware : **2.80A4      SLI - 3  : B3F2.80A4
      Port Name : 10000000C9537FB2  Kernel   : 1.20A1
-----

Directry Path      :
```

3.6.4-2 Confirm the version number after the update

Note: The first two characters in each version number vary depending on the adapter card. The characters are represented by "***" in the following explanation. For details, see the rightmost column in the tables in Appendix A, "Lists of the Folder Hierarchy on the Firmware CD."

Confirm the version number on the "Firmware" or "EFI Boot" line before the update.

Number displayed at "Firmware" for confirmation: **2.80A4 (in this example)

Number displayed at "EFI Boot" for confirmation: **4.00A1 (in this example)

Upon completing confirmation of the final version number displayed for the update on the screen, press [Enter] with "Directory Path" and "Filename" left blank.

```
-----
Emulex Fibre Channel EFI-Bios Utility, Ver: 4.00A1
-----
001: LP11002-M4      PCI-X  133MHz      Seg#: 00 Bus#: CB Dev#: 01 Func#: 00
      EFI Boot : **4.00A1      SLI - 2  : B2F2.80A4
      Firmware : **2.80A4      SLI - 3  : B3F2.80A4
      Port Name : 10000000C9537FB2  Kernel : 1.20A1
-----
      Directory Path      : (blank)
      Filename            : (blank)
```

*Confirm the Firmware version is displayed on SLI2 and SLI3.
If it is not displayed, the system may not run normally.

The following screen is displayed.

```
Directory Path      : .
Filename            : No Filename Entered.

Press any Key to Return to Previous Menu ...
```

Press any key to return to the screen displayed for the step in Section 3.6.3-2.

```
-----
Emulex Fibre Channel EFI-Bios Utility, Ver: 4.00A1
-----
001: LP11002-M4      PCI-X  133MHz      Seg#: 00 Bus#: CB Dev#: 01 Func#: 00
      HBA Status: Ready      Boot Bios : Enabled
      EFI Boot : BE4.00A1      Firmware : BS2.80A4
-----

      1. Update Selected Adapter
      2. Batch Mode Update
```

Press Esc key twice to return to the screen displayed in the step in Section 3.6.3-1.

```
-----  
Emulex Fibre Channel EFI-Bios Utility, Ver: 4.00A1  
-----  
  
Emulex Adapters in this System: 001 thru 002  
  
001: LP11002-M4      PCI-X  133MHz      Seg#: 00 Bus#: CB Dev#: 01 Func#: 00  
002: LP11002-M4      PCI-X  133MHz      Seg#: 00 Bus#: CB Dev#: 01 Func#: 01
```

Updating another adapter

Note: If the card is a Dual Port card, perform an update for the other port.

3.6.5 Updating another adapter

If adapters to be updated remain, select it with the up (↑) and down (↓) arrow keys, and press [Enter].

```
-----  
Emulex Fibre Channel EFI-Bios Utility, Ver: 4.00A1  
-----  
  
Emulex Adapters in this System: 001 thru 002  
  
001: LP11002-M4      PCI-X  133MHz      Seg#: 00 Bus#: CB Dev#: 01 Func#: 00  
002: LP11002-M4      PCI-X  133MHz      Seg#: 00 Bus#: CB Dev#: 01 Func#: 01
```

The screen returns to that shown in the step in Section 3.6.3-2.

Exiting the EFI Shell

3.6.6-1 Exit the tool

Press [Enter] with "Directory Path" and "Filename" left blank.

```
-----
Emulex Fibre Channel EFI-Bios Utility, Ver: 4.00A1
-----
001: LP11002-M4      PCI-X  133MHz      Seg#: 00 Bus#: CB Dev#: 01 Func#: 00
      EFI Boot : **4.00A1      SLI - 2  : B2F2.80A4
      Firmware : **2.80A4      SLI - 3  : B3F2.80A4
      Port Name : 10000000C9537FB2 Kernel : 1.20A1
-----

Directory Path      : (blank)
Filename            : (blank)
```

The following screen is displayed.

```
Directory Path      : .
Filename            : No Filename Entered.

Press any Key to Return to Previous Menu ...
```

Press any key to return to the screen displayed for the step in Section 3.6.3-2.

```
-----
Emulex Fibre Channel EFI-Bios Utility, Ver: 4.00A1
-----
001: LP11002-M4      PCI-X  133MHz      Seg#: 00 Bus#: CB Dev#: 01 Func#: 00
      HBA Status: Ready      Boot Bios : Enabled
      EFI Boot : BE4.00A1      Firmware : BS2.80A4
-----

1. Update Selected Adapter
2. Batch Mode Update
```

Press Esc key twice to return to the screen displayed for the step in Section 3.6.3-1.

```
-----
Emulex Fibre Channel EFI-Bios Utility, Ver: 4.00A1
-----

Emulex Adapters in this System: 001 thru 002

001: LP11002-M4      PCI-X  133MHz      Seg#: 00 Bus#: CB Dev#: 01 Func#: 00
002: LP11002-M4      PCI-X  133MHz      Seg#: 00 Bus#: CB Dev#: 01 Func#: 01
```

Press the [Esc] key again to return to the EFI shell (exiting the tool).

```
fs0:\>
```

3.6.6-2 Enter "exit" in the EFI shell

Enter "exit" in the EFI shell to return to the EFI Boot Manager screen (the following screen).

```
EFI Boot Manager ver 1.10 [1.13]

Please select a boot option

Windows Server 2003, Datacenter
EFI Shell [Built-in]
DVD/Acpi (PNP0A03, 0)/Pci (1D|1)/Usb (0, 0)/Usb (1, 0)
Network/Acpi (PNP0A03, 0)/Pci (1E|0)/Pci (8|0)/Mac (000B5D6F801B)
Boot Option Maintenance Menu
Setup Menu

Use ^ and v to change option(s). Use Enter to select an option
```

3.6.6-3 Eject the Firmware CD

Eject the Firmware CD from the KVM DVD-ROM drive.

Exit from the terminal software screen.

Preparation (Continued) ** Operation through Terminal Software **

<Connect to the console>

- 1) Set the Boot Selector mode with the Web-UI. (For details of this step, see "Preparation.")
- 2) <MMB operation> From the menu, select [Partition] --> [Console Redirection Switch]
(In PRIMEQUEST 510A, [System] --> [Console Redirection] --> [Console Redirection Switch])
to display the Console Redirection Switch page, and set [MMB] under "Connect to" for the partition.
(When you have changed it, click <Apply>.)

System **Partition** User Administration Network Configuration Maintenance Logout

>Partition > Console Redirection Switch

Power Control
Schedule
USB/5.1/4/2/1 Switch
Console Redirection Switch
Partition Configuration
Split Configuration
Reserved SB Configuration
Partition#0
Partition#2
Partition#3
Partition#4
Partition#6
Partition#8
Partition#10
Partition#12
Partition#14

Console Redirection Switch

Select the destination of serial output, and then click the Apply button to take effect.

| # | Partition Name | Status | Power Status | Connect to | Telnet/SSH | Port# |
|----|----------------|--------|--------------|---|---|-------|
| 0 | WmDev01 | OK | Standby | <input checked="" type="radio"/> COM <input checked="" type="radio"/> MMB | <input type="radio"/> None <input type="radio"/> Telnet <input type="radio"/> SSH | 7000 |
| 1 | | None | | <input checked="" type="radio"/> COM <input checked="" type="radio"/> MMB | <input type="radio"/> None <input type="radio"/> Telnet <input type="radio"/> SSH | 7001 |
| 2 | NetCOBOL1 | OK | On | <input checked="" type="radio"/> COM <input checked="" type="radio"/> MMB | <input type="radio"/> None <input type="radio"/> Telnet <input type="radio"/> SSH | 7002 |
| 3 | ACM | OK | On | <input checked="" type="radio"/> COM <input checked="" type="radio"/> MMB | <input type="radio"/> None <input type="radio"/> Telnet <input type="radio"/> SSH | 7003 |
| 4 | GDS-1 | OK | On | <input checked="" type="radio"/> COM <input checked="" type="radio"/> MMB | <input type="radio"/> None <input type="radio"/> Telnet <input type="radio"/> SSH | 7004 |
| 5 | | None | | <input checked="" type="radio"/> COM <input checked="" type="radio"/> MMB | <input type="radio"/> None <input type="radio"/> Telnet <input type="radio"/> SSH | 7005 |
| 6 | IA3-SCSI | OK | Standby | <input checked="" type="radio"/> COM <input checked="" type="radio"/> MMB | <input type="radio"/> None <input type="radio"/> Telnet <input type="radio"/> SSH | 7006 |
| 7 | | None | | <input checked="" type="radio"/> COM <input checked="" type="radio"/> MMB | <input type="radio"/> None <input type="radio"/> Telnet <input type="radio"/> SSH | 7007 |
| 8 | MSCS1 | OK | Standby | <input checked="" type="radio"/> COM <input checked="" type="radio"/> MMB | <input type="radio"/> None <input type="radio"/> Telnet <input type="radio"/> SSH | 7008 |
| 9 | | None | | <input checked="" type="radio"/> COM <input checked="" type="radio"/> MMB | <input type="radio"/> None <input type="radio"/> Telnet <input type="radio"/> SSH | 7009 |
| 10 | MSCS2 | OK | Standby | <input checked="" type="radio"/> COM <input checked="" type="radio"/> MMB | <input type="radio"/> None <input type="radio"/> Telnet <input type="radio"/> SSH | 7010 |
| 11 | | None | | <input checked="" type="radio"/> COM <input checked="" type="radio"/> MMB | <input type="radio"/> None <input type="radio"/> Telnet <input type="radio"/> SSH | 7011 |
| 12 | IA3-Intel#0 | OK | On | <input checked="" type="radio"/> COM <input checked="" type="radio"/> MMB | <input type="radio"/> None <input type="radio"/> Telnet <input type="radio"/> SSH | 7012 |
| 13 | | None | | <input checked="" type="radio"/> COM <input checked="" type="radio"/> MMB | <input type="radio"/> None <input type="radio"/> Telnet <input type="radio"/> SSH | 7013 |
| 14 | 10GEth#1_181 | OK | On | <input checked="" type="radio"/> COM <input checked="" type="radio"/> MMB | <input type="radio"/> None <input type="radio"/> Telnet <input type="radio"/> SSH | 7014 |
| 15 | | None | | <input checked="" type="radio"/> COM <input checked="" type="radio"/> MMB | <input type="radio"/> None <input type="radio"/> Telnet <input type="radio"/> SSH | 7015 |

Apply Cancel

- 3) Start the terminal software.

When it connects with Telnet,

Set IP address : Set the virtual IP address of MMB

Set TCP port : Set the port number (7000~) for each partition

When it connects with SSH, specify SSH Version2 (SSH2).

Start a console by the above operation.

login: CE account

Password: CE account password

Terminal size: 80x24

3.6.7-1 Start the EFI shell

From the Boot Option Maintenance menu for EFI displayed in the terminal software window, select "EFI Shell [Built-in]," and press the [Enter] key.

"EFI Shell [Built-in]" selected in the terminal software window

```
EFI Boot Manager ver 1.10 [1.13]
```

```
Please select a boot option
```

```
Windows Server 2003, Datacenter
EFI Shell [Built-in]
DVD/Acpi(PNP0A03,0)/Pci(1D|1)/Usb(0, 0)/Usb(1, 0)
Network/Acpi(PNP0A03,0)/Pci(1E|0)/Pci(8|0)/Mac(000B5D6E01BF)
Boot Option Maintenance Menu
Setup Menu
```

```
Use ^ and v to change option(s). Use Enter to select an option
```

* Screenshot of the window (The displayed menu varies depending on the user's settings.)

3.6.7-2 Confirm the file system (fs)

The next window displayed is as shown below.

Confirm the fsN value assigned to the Firmware CD (here, it is fs0).

```
Loading.: EFI Shell [Built-in]
```

```
EFI Shell version 1.10 [1.13]
```

```
Device mapping table
```

```
fs0 : Acpi(PNP0A03,0)/Pci(1D|1)/Usb(0, 0)/Usb(1, 0)/CDROM(Entry0)/HD(Part1,Signature00000000)
fs1 : Acpi(PNP0A03,0)/Pci(F|1)/Pci(0|2)/Pci(1|0)/Scsi(Pun0,Lun0)/HD(Part1,SignatureDEEFD988-C5E0-463F-BE91-14C2B48424BA)
blk0 : Acpi(PNP0A03,0)/Pci(1D|1)/Usb(0, 0)/Usb(1, 0)
blk1 : Acpi(PNP0A03,0)/Pci(1D|1)/Usb(0, 0)/Usb(1, 0)/CDROM(Entry0)
blk2 : Acpi(PNP0A03,0)/Pci(1D|1)/Usb(0, 0)/Usb(1, 0)/CDROM(Entry0)/HD(Part1,Signature00000000)
blk3 : Acpi(PNP0A03,0)/Pci(F|1)/Pci(0|2)/Pci(1|0)/Scsi(Pun0,Lun0)
blk4 : Acpi(PNP0A03,0)/Pci(F|1)/Pci(0|2)/Pci(1|0)/Scsi(Pun0,Lun0)/HD(Part1,SignatureDEEFD988-C5E0-463F-BE91-14C2B48424BA)
blk5 : Acpi(PNP0A03,0)/Pci(F|1)/Pci(0|2)/Pci(1|0)/Scsi(Pun0,Lun0)/HD(Part2,SignatureA8E787F6-F0AE-4EB7-9820-6A92F867C6D0)
blk6 : Acpi(PNP0A03,0)/Pci(F|1)/Pci(0|2)/Pci(1|0)/Scsi(Pun0,Lun0)/HD(Part3,SignatureDC040D9A-9AA1-48B4-93CB-5801C2146A65)
blk7 : Acpi(PNP0A03,0)/Pci(F|1)/Pci(0|2)/Pci(1|0)/Scsi(Pun0,Lun0)/HD(Part4,SignatureB0728977-81FA-42DF-811F-B67DBF89B9B2)
```

```
Shell>
```

```
Shell>
```

```
Shell>
```

```
Shell>
```

If the fs number of the CD is not found:

Enter the following command from the EFI shell to reconnect the device.

```
shell> reconnect -r[Enter]
```

Upon the return to the EFI shell screen, enter the following command to display the device map again, and confirm the fs number assigned to the CD:

```
shell> map -r[Enter]
```

3.6.7-3 Confirm the firmware CD

Move to the location indicated by the fs number assigned to the CD. Confirm that the CD is read normally by the ls command.

```
fs0:\> ls
Directory of: fs0:\

03/10/08 01:42a      4,224 README.ja_JP.EUC.txt
03/10/08 01:42a      4,350 README.ja_JP.SJIS.txt
03/10/08 01:42a      4,922 README.ja_JP.UTF-8.txt
03/10/08 01:42a      4,596 README.txt
03/24/08 03:54p <DIR>      2,048 PQ420
03/24/08 03:55p <DIR>      2,048 PQ480_440
03/24/08 03:55p <DIR>      2,048 PQ510A
03/24/08 03:56p <DIR>      2,048 PQ520
03/24/08 03:56p <DIR>      2,048 PQ520A_520M
03/24/08 03:57p <DIR>      2,048 PQ580_540
03/24/08 04:04p <DIR>      2,048 PQ580A_540A
         4 File(s)      18,092 bytes
         7 Dir(s)
```

```
fs0:\>
fs0:\>
fs0:\>
fs0:\>
fs0:\>
fs0:\>
```

Tool Startup

3.6.8-1 Confirm the EFI driver number for the Fibre Channel device

```
fs0:\> drivers -b
=====
D  T  D
R  Y  C  I
V  P  F  A
V  VERSION  E  G  G  #D  #C  DRIVER NAME  IMAGE NAME
=====
00D 00000010 B - - 2 36 PCI Bus Driver PciBus
00F 00000010 D - - 1 - PC-AT ISA Device Enumeration Driver PcatIsaAcpi
010 00000010 B - - 1 2 ISA Bus Driver IsaBus
011 00000010 B - - 1 1 ISA Serial Driver IsaSerial
013 00000119 D - - 1 - ATI Rage XL UGA Driver XL_IPF_119.efi
014 00000010 D - - 1 - UGA Console Driver GraphicsConsole
015 00000010 D - - 3 - Usb Uhci Driver UsbUhci
016 00000010 B - - 1 1 Serial Terminal Driver Terminal
017 00000010 D - - 2 - Platform Console Management Driver ConPlatform
018 00000010 D - - 2 - Platform Console Management Driver ConPlatform
019 00000010 B - - 2 2 Console Splitter Driver ConSplitter
01A 00000010 B - - 1 1 Console Splitter Driver ConSplitter
01B 00000010 B - - 2 2 Console Splitter Driver ConSplitter
01C 00000010 B - - 2 2 Console Splitter Driver ConSplitter
020 00000010 B - - 3 6 USB Bus Driver UsbBus
021 00000010 D - - 1 - Usb Keyboard Driver UsbKeyboard
022 00031131 D X X 2 - Emulex SCSI Pass Thru Driver PciRom Seg=000000
035 00000010 D - - 1 - Generic USB Mass Storage Driver UsbMassStorage
=====
```

Confirm the numerical value NN at the beginning of the "Emulex SCSI Pass Thru Driver" line (here, it is 22).

Notes:

1. The value in the IMAGE NAME column varies depending on the EFI Driver version.
2. Even if "Emulex SCSI Pass Thru Driver" is displayed on multiple lines with different version numbers, confirm all of the numerical values NN at the beginning.

3.6.8-2 Delete the EFI driver

Delete all of the target EFI drivers with unload command.

```
fs0:\> unload 22
```

The number entered after "unload" is the numerical value confirmed in the step explained in Section 3.6.8-1.

```
fs0:\> unload 22
22: Image(PciRom Seg=00000000 Bus=CB Dev=01 Func=01 Image=0000) DriverBinding C
omponentName Configuration Diagnostics
Unload protocol image (y/n)? y
```

It asks "Unload protocol image (y/n)?". Delete it by inputting y and pushing Enter.
If there are plural target EFI drivers, delete all of them with unload command.

3.6.8-3 Confirm after the EFI driver delete

Confirm the unloaded EFI driver is deleted.

```
019 00000010 B - - 2 2 Console Splitter Driver ConSplitter
01A 00000010 B - - 1 1 Console Splitter Driver ConSplitter
01B 00000010 B - - 2 2 Console Splitter Driver ConSplitter
01C 00000010 B - - 2 2 Console Splitter Driver ConSplitter
020 00000010 B - - 3 4 USB Bus Driver UsbBus
021 00000010 D - - 1 - Usb Keyboard Driver UsbKeyboard
022 02000600 D X X 2 - LSI Logic Fusion MPT SAS Driver PciRom Seg=000000
02D 00000010 D - - 1 - Generic USB Mass Storage Driver UsbMassStorage
Press ENTER to continue, 'q' to exit:
02E 00000010 D - - 1 - Usb Bot Mass Storage Driver UsbBot
02F 00000010 ? - - - - Usb Cbi1 Mass Storage Driver UsbCbi1
030 00000010 ? - - - - Usb Cbi0 Mass Storage Driver UsbCbi0
031 00000010 D - - 1 - Generic Disk I/O Driver DiskIo
032 00000010 ? - - - - Partition Driver(MBR/GPT/El Torito) Partition
033 00000010 ? - - - - FAT File System Driver Fat
034 00000010 B - - 1 1 Intel(R) PRO 100 UNDI Driver Undi
035 00000010 D - - 5 - Simple Network Protocol Driver Snp3264
036 00000010 D - - 5 - PXE Base Code Driver PxeBc
037 00000010 D - - 5 - PXE DHCPv4 Driver PxeDhcp4
038 00000010 D - - 1 - Usb Mouse Driver UsbMouse
03A 01050000 ? X X - - LSI Logic Fusion MPT Driver lsimptfw.efi
03E 00070700 B X X 4 4 Broadcom Gigabit Ethernet Driver b57undi64.efi
```

3.6.8-4 Add the EFI driver

Load the newly updated EFI driver with load command.

```
fs0:\> load \PQ580A 540A\Emulex_FC\EFI_tool\Elxcli400A1.efi
```

As for the directory of the EFI driver, refer to " Appendix A Lists of the Folder Hierarchy on the Firmware CD".

*An EFI driver is loaded as TOOL on PRIMEQUEST system, it is not set to FC card.
Setting to FC card is performed in Section 3.6.9-1.

Confirm the EFI driver is loaded correctly by the following message being displayed.

```
fs0:\> load \PQ580A 540A\Emulex_FC\EFI_tool\Elxcli400A1.efi
load: Image fs0:\PQ580A 540A\Emulex_FC\EFI_tool\Elxcli400A1.efi loaded at 0x7F03
2000 - Success
fs0:\>
```

"0x7F032000" on the screen is a numerical value of an example.

3.6.8-5 Confirm after the EFI driver load

```
01A 00000010 B - - 1 1 Console Splitter Driver ConSplitter
01B 00000010 B - - 2 2 Console Splitter Driver ConSplitter
01C 00000010 B - - 2 2 Console Splitter Driver ConSplitter
020 00000010 B - - 3 5 USB Bus Driver UsbBus
021 00000010 D - - 1 - Usb Keyboard Driver UsbKeyboard
022 02000600 D X X 2 - LSI Logic Fusion MPT SAS Driver PeiRom Seg=000000
02D 00000010 D - - 2 - Generic USB Mass Storage Driver UsbMassStorage
Press ENTER to continue, 'q' to exit:
02E 00000010 D - - 2 - Usb Bot Mass Storage Driver UsbBot
02F 00000010 ? - - - Usb Cbi1 Mass Storage Driver UsbCbi1
030 00000010 ? - - - Usb Cbi0 Mass Storage Driver UsbCbi0
031 00000010 D - - 3 - Generic Disk I/O Driver DiskIo
032 00000010 B - - 1 1 Partition Driver(MBR/GPT/El Torito) Partition
033 00000010 D - - 1 - FAT File System Driver Fat
034 00000010 B - - 1 1 Intel(R) PRO 100 UNDI Driver Undi
035 00000010 D - - 5 - Simple Network Protocol Driver Snp3264
036 00000010 D - - 5 - PXE Base Code Driver PxeBc
037 00000010 D - - 5 - PXE DHCPv4 Driver PxeDhcp4
038 00000010 D - - 1 - Usb Mouse Driver UsbMouse
03A 01050000 ? X X - - LSI Logic Fusion MPT Driver lsimptfw.efi
03E 00070700 B X X 4 4 Broadcom Gigabit Ethernet Driver b57undi64.efi
041 00040011 D X X 2 - Emulex SCSI Pass Thru Driver elxcli400a1
```

Confirm the EFI driver(here, it is elxcli400a1.efi) which is loaded in Section 3.6.2-4 is added in "IMAGE NAME".

Confirm the numerical value NN at the beginning of the "Emulex SCSI Pass Thru Driver" line (here, it is A1).

*Perform the following update operation after performing above EFI driver additional operation.
If it is not performed, FC card may not run normally.

3.6.8-6 Enter the command for startup

```
fs0:\> drvcfg -S A1
```

The number entered after "-s" is the numerical value (NN) confirmed in the step explained in Section 3.6.8-5.

3.6.8-7 Confirm startup

Based on the window displayed for startup, such as shown below, confirm that the tool has started.

```
Emulex FC EFI-Bios Utility, Ver: 4.00A1

Emulex Adapters in this System: 001 thru 002
001: LPe11002-M4    PCIe  2.5Gb/s, x4  Seg#: 00 Bus#: 0C Dev#: 00 Func#: 00
002: LPe11002-M4    PCIe  2.5Gb/s, x4  Seg#: 00 Bus#: 0C Dev#: 00 Func#: 01

<<-/->> to Display Prev/Next Page.
<~/v> to Select Options, <Enter> to Select Option, <ESC> to Exit.

Copyright (c) 2003-2007 Emulex. All rights reserved.
```

In the above screenshot, the system is equipped with one 4G (Dual Port) Fibre Channel adapter card.

Depending on the Fibre Channel adapter card equipped with, the card is displayed on two lines, with "Func#00" on the first (top) line and "Func#01" on the second (bottom) line.

Update

3.6.9-1 Select the adapter to be updated

If the card is a Dual Port card, apply the update to every port (Func#: xx) displayed. Select the adapter with the up (↑) and down (↓) arrow keys, and press [Enter].

```
Emulex FC EFI-Bios Utility, Ver: 4.00A1

Emulex Adapters in this System: 001 thru 002
001: LPe11002-M4    PCIe  2.5Gb/s, x4  Seg#: 00 Bus#: 0C Dev#: 00 Func#: 00
002: LPe11002-M4    PCIe  2.5Gb/s, x4  Seg#: 00 Bus#: 0C Dev#: 00 Func#: 01

<<-/->> to Display Prev/Next Page.
<~/v> to Select Options, <Enter> to Select Option, <ESC> to Exit.

Copyright (c) 2003-2007 Emulex. All rights reserved.
```

Note: Each page of the window displays lines for up to eight ports. To change the page for a system that has nine or more ports, use the right (<-->) and left (<-->) arrow keys.

3.6.9-2 Select "Firmware Update"

```
-----
Emulex FC EFI-Bios Utility, Ver: 4.00A1
-----
001: LPe11002-M4    PCIe  2.5Gb/s, x4  Seg#: 00 Bus#: 0C Dev#: 00 Func#: 00
      HBA Status: Ready      Boot Bios : Enabled
      EFI  Boot  : ZE3.11X1    Firmware  : ZS2.70A5
-----

      1. Setup Utility
      2. Firmware Update

-----
</v> to Select Options. <Enter> to Select Option. <ESC> to Prev Menu.
-----
Copyright (c) 2003-2007 Emulex. All rights reserved.
```

Select "2. Firmware Update" with the up (↑) and down (↓) arrow keys, and press [Enter]. The following screen is displayed.

```
-----
Emulex FC EFI-Bios Firmware Update Utility, Ver: 4.00A1
-----
001: LPe11002-M4    PCIe  2.5Gb/s, x4  Seg#: 00 Bus#: 0C Dev#: 00 Func#: 00
      HBA Status: Ready      Boot Bios : Enabled
      EFI  Boot  : ZE3.11X1    Firmware  : ZS2.70A5
-----

      1. Update Selected Adapter
      2. Batch Mode Update

-----
</v> to Select Options. <Enter> to Select Option. <ESC> to Prev Menu.
-----
Copyright (c) 2003-2007 Emulex. All rights reserved.
```

Select "1. Update Selected Adapter" with the up (↑) and down (↓) arrow keys, and press [Enter]. The following screen is displayed.

```
-----
Emulex FC EFI-Bios Firmware Update Utility, Ver: 4.00A1
-----
001: LPe11002-M4    PCIe  2.5Gb/s, x4  Seg#: 00 Bus#: 0C Dev#: 00 Func#: 00
      EFI  Boot  : **3.11X1    SLI - 2  : Z2F2.70A5
      Firmware : **2.70A5      SLI - 3  : Z3F2.70A5
      Port Name : 10000000C953BF96  Kernel : 1.20A2
-----

      Directory Path      :

-----
Copyright (c) 2003-2007 Emulex. All rights reserved.
```

3.6.9-3 Confirm the version number before the update

Note: The first two characters in each version number vary depending on the adapter card. The characters are represented by "*" in the following explanation.

Confirm the version number on the "Firmware" or "EFI Boot" line before the update.

Number displayed at "Firmware" for confirmation: **2.70A5 (in this example)

Number displayed at "EFI Boot" for confirmation: **3.11X1 (in this example)

3.6.9-4 Perform the update

Specify the directory path (fs* is unnecessary), and press [Enter]. Specify the file name on the next line, and press [Enter].

If the specified path is incorrect, press [Enter] to go back to that line, and repeat this operation.

For the folder hierarchy of each adapter card, see Appendix A, "Lists of the Folder Hierarchy on the Firmware CD."

```
Emulex FC EFI-Bios Firmware Update Utility, Ver: 4.00A1
-----
001: LPe11002-M4    PCIe  2.5Gb/s, x4  Seg#: 00 Bus#: 0C Dev#: 00 Func#: 00
      EFI Boot  : ZE3.11X1      SLI - 2   : Z2F2.70A5
      Firmware  : ZS2.70A5      SLI - 3   : Z3F2.70A5
      Port Name : 10000000C953BF96  Kernel   : 1.20A2
-----

Directory Path      : \PQ580A_540A\Emulex_FC\MC08FC61\EFI_4.00A1
Filename            : ZE400A1.PRG

-----
Copyright (c) 2003-2007 Emulex. All rights reserved.
```

<Update the EFI driver>

The following screen is displayed. The update is completed.

```
Emulex FC EFI-Bios Firmware Update Utility, Ver: 4.00A1
-----
001: LPe11002-M4    PCIe  2.5Gb/s, x4  Seg#: 00 Bus#: 0C Dev#: 00 Func#: 00
      EFI Boot  : ZE3.11X1      SLI - 2   : Z2F2.70A5
      Firmware  : ZS2.70A5      SLI - 3   : Z3F2.70A5
      Port Name : 10000000C953BF96  Kernel   : 1.20A2
-----

Directory Path      : \PQ580A_540A\Emulex_FC\MC08FC61\EFI_4.00A1
Filename            : ZE400A1.PRG
File Open           : Done.
Validate Adapter    : Done.
Flash Erase         : Done.
Flash Program       : Done.
WakeUp Parameter    : Updated.

-----
Press any Key to Return to Previous Menu ...

-----
Copyright (c) 2003-2007 Emulex. All rights reserved.
```

* Firmware update and EFI driver update are the same procedures.

Firmware and EFI driver are decided by the appointed "Directory Path" and "Filename".

<Update the firmware>

The following window is displayed. The update is completed.

```
Emulex FC EFI-Bios Firmware Update Utility, Ver: 4.00A1
-----
001: LPe11002-M4      PCIe  2.5Gb/s, x4  Seg#: 00 Bus#: 0C Dev#: 00 Func#: 00
      EFI Boot : ZE3.11K1      SLI - 2  : Z2F2.70A5
      Firmware : ZS2.70A5      SLI - 3  : Z3F2.70A5
      Port Name : 10000000C953BF96  Kernel : 1.20A2
-----

      Directory Path      : \PQ580A_540A\Emulex_FCWC08FG61\Firm_2.80A4
      Filename            : zf380a4.all
      File Open           : Done.
      Validate Adapter    : Done.
      Flash Erase         : Done.
      Flash Program       : Done.
      WakeUp Parameter    : Updated.

      Press any Key to Return to Previous Menu ...

Copyright (c) 2003-2007 Emulex. All rights reserved.
```

3.6.9-5 Complete the update procedure

Press any key to return to the window displayed for the step in Section 3.6.9-2.

```
Emulex FC EFI-Bios Firmware Update Utility, Ver: 4.00A1
-----
001: LPe11002-M4      PCIe  2.5Gb/s, x4  Seg#: 00 Bus#: 0C Dev#: 00 Func#: 00
      HBA Status: Ready      Boot Bios : Enabled
      EFI Boot : ZE4.00A1    Firmware  : ZS2.80A4
-----

      1. Update Selected Adapter
      2. Batch Mode Update

      <~/v> to Select Options. <Enter> to Select Option. <ESC> to Prev Menu.

Copyright (c) 2003-2007 Emulex. All rights reserved.
```

Press Esc key twice to return to the screen displayed for the step in Section 3.6.9-1.

```
Emulex FC EFI-Bios Utility, Ver: 4.00A1
-----

      Emulex Adapters in this System: 001 thru 002

001: LPe11002-M4      PCIe  2.5Gb/s, x4  Seg#: 00 Bus#: 0C Dev#: 00 Func#: 00
002: LPe11002-M4      PCIe  2.5Gb/s, x4  Seg#: 00 Bus#: 0C Dev#: 00 Func#: 01

      <<~/> to Display Prev/Next Page.
      <~/v> to Select Options. <Enter> to Select Option. <ESC> to Exit.

Copyright (c) 2003-2007 Emulex. All rights reserved.
```


Confirmation

3.6.10-1 Select "Firmware Update"

```
Emulex FC EFI-Bios Utility, Ver: 4.00A1
-----
001: LPe11002-M4    PCIe  2.5Gb/s, x4  Seg#: 00 Bus#: 0C Dev#: 00 Func#: 00
      HBA Status: Ready      Boot Bios : Enabled
      EFI  Boot : ZE4.00A1    Firmware  : ZS2.80A4
-----

1. Setup Utility
2. Firmware Update

<~/v> to Select Options, <Enter> to Select Option, <ESC> to Prev Menu.
Copyright (c) 2003-2007 Emulex. All rights reserved.
```

Select "2. Firmware Update" with the up (↑) and down (↓) arrow keys, and press [Enter]. The following screen is displayed.

```
Emulex FC EFI-Bios Firmware Update Utility, Ver: 4.00A1
-----
001: LPe11002-M4    PCIe  2.5Gb/s, x4  Seg#: 00 Bus#: 0C Dev#: 00 Func#: 00
      HBA Status: Ready      Boot Bios : Enabled
      EFI  Boot : ZE4.00A1    Firmware  : ZS2.80A4
-----

1. Update Selected Adapter
2. Batch Mode Update

<~/v> to Select Options, <Enter> to Select Option, <ESC> to Prev Menu.
Copyright (c) 2003-2007 Emulex. All rights reserved.
```

Select "1. Update Selected Adapter" with the up (↑) and down (↓) arrow keys, and press [Enter]. The following screen is displayed.

```
Emulex FC EFI-Bios Firmware Update Utility, Ver: 4.00A1
-----
001: LPe11002-M4    PCIe  2.5Gb/s, x4  Seg#: 00 Bus#: 0C Dev#: 00 Func#: 00
      EFI  Boot : **4.00A1    SLI - 2 : Z2F2.80A4
      Firmware : **2.80A4     SLI - 3 : Z3F2.80A4
      Port Name : 10000000C953BF96  Kernel : 1.20A9
-----

Directory Path      : █

Copyright (c) 2003-2007 Emulex. All rights reserved.
```

3.6.10-2 Confirm the version number after the update

Note: The first two characters in each version number vary depending on the adapter card. The characters are represented by "***" in the following explanation. For details, see the rightmost column in the tables in Appendix A, "Lists of the Folder Hierarchy on the Firmware CD."

Confirm the version number on the "Firmware" or "EFI Boot" line before the update.

Number displayed at "Firmware" for confirmation: **2.80A4 (in this example)

Number displayed at "EFI Boot" for confirmation: **4.00A1 (in this example)

Upon completing confirmation of the final version number displayed for the update in the window, press [Enter] with "Directory Path" and "Filename" left blank. The following window is displayed.

```
Emulex FC EFI-Bios Firmware Update Utility, Ver: 4.00A1
-----
001: LPe11002-M4    PCIe  2.5Gb/s, x4  Seg#: 00 Bus#: 0C Dev#: 00 Func#: 00
      EFI Boot : ZE4.00A1      SLI - 2 : Z3F2.80A4
      Firmware : ZS2.80A4      SLI - 3 : Z3F2.80A4
      Port Name : 10000000C953BF96  Kernel : 1.20A9
-----

Directory Path      :
Filename            : No Filename Entered.

Press any Key to Return to Previous Menu ...

Copyright (c) 2003-2007 Emulex. All rights reserved.
```

*Confirm the Firmware version is displayed on SLI2 and SLI3.
If it is not displayed, the system may not run normally.

Press any key to return to the window displayed for the following it.

```
Emulex FC EFI-Bios Firmware Update Utility, Ver: 4.00A1
-----
001: LPe11002-M4    PCIe  2.5Gb/s, x4  Seg#: 00 Bus#: 0C Dev#: 00 Func#: 00
      HBA Status: Ready      Boot Bios : Enabled
      EFI Boot : ZE4.00A1      Firmware : ZS2.80A4
-----

1. Update Selected Adapter
2. Batch Mode Update

</v> to Select Options. <Enter> to Select Option. <ESC> to Prev Menu.

Copyright (c) 2003-2007 Emulex. All rights reserved.
```

Press Esc key twice to return to the screen displayed for the step in Section 3.6.9-1.

```
Emulex FC EFI-Bios Utility, Ver: 4.00A1

-----

Emulex Adapters in this System: 001 thru 002

001: LPe11002-M4    PCIe  2.5Gb/s, x4  Seg#: 00 Bus#: 0C Dev#: 00 Func#: 00
002: LPe11002-M4    PCIe  2.5Gb/s, x4  Seg#: 00 Bus#: 0C Dev#: 00 Func#: 01

<<-/->> to Display Prev/Next Page.
</v> to Select Options, <Enter> to Select Option, <ESC> to Exit.

-----

Copyright (c) 2003-2007 Emulex. All rights reserved.
```

Updating another adapter

Note: If the card is a Dual Port card, perform an update for the other port.

3.6.11 Updating another adapter

Press the [Esc] key to return to the window displayed for the step in Section 3.6.9-1.

```
Emulex FC EFI-Bios Utility, Ver: 4.00A1

-----

Emulex Adapters in this System: 001 thru 002

001: LPe11002-M4    PCIe  2.5Gb/s, x4  Seg#: 00 Bus#: 0C Dev#: 00 Func#: 00
002: LPe11002-M4    PCIe  2.5Gb/s, x4  Seg#: 00 Bus#: 0C Dev#: 00 Func#: 01

<<-/->> to Display Prev/Next Page.
</v> to Select Options, <Enter> to Select Option, <ESC> to Exit.

-----

Copyright (c) 2003-2007 Emulex. All rights reserved.
```

If adapters to be updated remain, select it with the up (↑) and down (↓) arrow keys, and press [Enter].

```
Emulex FC EFI-Bios Utility, Ver: 4.00A1

-----

Emulex Adapters in this System: 001 thru 002

001: LPe11002-M4    PCIe  2.5Gb/s, x4  Seg#: 00 Bus#: 0C Dev#: 00 Func#: 00
002: LPe11002-M4    PCIe  2.5Gb/s, x4  Seg#: 00 Bus#: 0C Dev#: 00 Func#: 01

<<-/->> to Display Prev/Next Page.
</v> to Select Options, <Enter> to Select Option, <ESC> to Exit.

-----

Copyright (c) 2003-2007 Emulex. All rights reserved.
```

The window returns to that displayed for the step in Section 3.6.9-2.

Exiting the EFI Shell

3.6.12-1 Exit the tool

Press [Enter] with "Directory Path" and "Filename" left blank.
The following window is displayed.

```
-----
Emulex FC EFI-Bios Firmware Update Utility, Ver: 4.00A1
-----
001: LPe11002-M4    PCIe   2.5Gb/s, x4  Seg#: 00 Bus#: 0C Dev#: 00 Func#: 00
      EFI Boot : ZE4.00A1      SLI - 2  : Z3F2.80A4
      Firmware : ZS2.80A4      SLI - 3  : Z3F2.80A4
      Port Name : 10000000C953BF96  Kernel : 1.20A9
-----

Directory Path      :
Filename           : No Filename Entered.

Press any Key to Return to Previous Menu ...

-----
Copyright (c) 2003-2007 Emulex. All rights reserved.
-----
```

Press any key to return to the window displayed for the following it.

```
-----
Emulex FC EFI-Bios Firmware Update Utility, Ver: 4.00A1
-----
001: LPe11002-M4    PCIe   2.5Gb/s, x4  Seg#: 00 Bus#: 0C Dev#: 00 Func#: 00
      HBA Status: Ready        Boot Bios : Enabled
      EFI Boot  : ZE4.00A1      Firmware  : ZS2.80A4
-----

1. Update Selected Adapter
2. Batch Mode Update

<~/v> to Select Options. <Enter> to Select Option. <ESC> to Prev Menu.

-----
Copyright (c) 2003-2007 Emulex. All rights reserved.
-----
```

Press Esc key twice to return to the screen displayed for the step in Section 3.6.9-1.

```
-----
Emulex FC EFI-Bios Utility, Ver: 4.00A1
-----

Emulex Adapters in this System: 001 thru 002

001: LPe11002-M4    PCIe   2.5Gb/s, x4  Seg#: 00 Bus#: 0C Dev#: 00 Func#: 00
002: LPe11002-M4    PCIe   2.5Gb/s, x4  Seg#: 00 Bus#: 0C Dev#: 00 Func#: 01

<<-/->> to Display Prev/Next Page.
<~/v> to Select Options. <Enter> to Select Option. <ESC> to Exit.

-----
Copyright (c) 2003-2007 Emulex. All rights reserved.
-----
```

Press the [Esc] key again to return to the EFI shell (exiting the tool).

```
Drv[9A] Ctrl[ALL] Lang[eng] - Options set. Action Required is None
None
fs0:\>
```

3.6.12-2 Enter "exit" in the EFI shell

Enter "exit" in the EFI shell to return to the EFI Boot Manager window (the following window).

EFI Boot Manager ver 1.10 [1.13]

Please select a boot option

```
Windows Server 2003, Datacenter
EFI Shell [Built-in]
DVD/Acpi(PNP0A03,0)/Pci(1D|1)/Usb(0, 0)/Usb(1, 0)
Network/Acpi(PNP0A03,0)/Pci(1E|0)/Pci(8|0)/Mac(000B5D6E01BF)
Boot Option Maintenance Menu
Setup Menu
```

Use ^ and v to change option(s). Use Enter to select an option.

3.6.12-3 Eject the Firmware CD

Eject the Firmware CD from the KVM DVD-ROM drive.

Exit the terminal software, closing its window.

Terminating the Web-UI Connection

3.6.13 Setting "Power Off" for the partition

1) For the partition that was set to "Power On" for the Fibre Channel card firmware update, set "Power Off." [Part 1]

On the Partition > Power Control page (System > Power Control page in PRIMEQUEST 510A), set [Power Off] under "Power Control" for the partition, and click <Apply>.

System **Partition** Switch User Administration Network Configuration Maintenance Logout

>Partition >Power Control

☒ Power Control
+ Schedule
+ USB/Video/DVD Switch
+ Console Redirection Switch
+ Partition Configuration
+ Split Configuration
+ Reserved SB Configuration
+ Partition#0
+ Partition#2
+ Partition#3
+ Partition#4
+ Partition#6
+ Partition#8
+ Partition#10
+ Partition#12
+ Partition#14

Power Control

Refresh Help

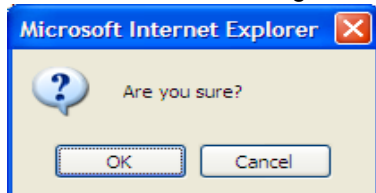
Select a Power Control option for one or more partitions, then click the Apply button to take effect.

| # | Partition Name | Status | Power Status | System Progress | Power Control | Force Power Off Delay |
|----|----------------|--------|--------------|-----------------|-----------------|------------------------------|
| 0 | Partition#0 | OK | On | OS Running | (Not specified) | <input type="checkbox"/> min |
| 2 | Partition#2 | OK | Standby | Power Off | (Not specified) | <input type="checkbox"/> min |
| 3 | Partition#3 | OK | Standby | Power Off | (Not specified) | <input type="checkbox"/> min |
| 4 | Partition#4 | OK | Standby | Power Off | (Not specified) | <input type="checkbox"/> min |
| 6 | Partition#6 | OK | On | OS Running | (Not specified) | <input type="checkbox"/> min |
| 8 | Partition#8 | OK | On | OS Running | (Not specified) | <input type="checkbox"/> min |
| 10 | Partition#10 | OK | Standby | Power Off | (Not specified) | <input type="checkbox"/> min |
| 12 | Partition#12 | OK | On | POST 1094h | Power Off | <input type="checkbox"/> min |
| 14 | Partition#14 | OK | On | OS Running | (Not specified) | <input type="checkbox"/> min |

Apply Cancel

Partition > Power Control page ("Power Off" set)

In the confirmation dialog box, click <OK>.



- 2) For the partition that was set to "Power On" for the Fibre Channel card firmware update, set "Power Off." [Part 2]
Confirm that the partition has "Power Off In Progress" displayed in the System Progress column after "Power Off" is set.

System | Partition | Switch | User Administration | Network Configuration | Maintenance Logout
>Partition >Power Control

Power Control Refresh Help

Select a Power Control option for one or more partitions, then click the Apply button to take effect.

| # | Partition Name | Status | Power Status | System Progress | Power Control | Force Power Off Delay |
|----|----------------|--------|--------------|-----------------------|-----------------|-----------------------|
| 0 | Partition#0 | OK | On | OS Running | (Not specified) | min |
| 2 | Partition#2 | OK | Standby | Power Off | (Not specified) | min |
| 3 | Partition#3 | OK | Standby | Power Off | (Not specified) | min |
| 4 | Partition#4 | OK | Standby | Power Off | (Not specified) | min |
| 6 | Partition#6 | OK | On | OS Running | (Not specified) | min |
| 8 | Partition#8 | OK | On | OS Running | (Not specified) | min |
| 10 | Partition#10 | OK | Standby | Power Off | (Not specified) | min |
| 12 | Partition#12 | OK | On | Power Off In Progress | (Not specified) | min |
| 14 | Partition#14 | OK | On | OS Running | (Not specified) | min |

Apply Cancel

Partition > Power Control page ("Power Off" operation started)

- 3) For the partition that was set to "Power On" for the Fibre Channel card firmware update, set "Power Off." [Part 3]
Confirm that the partition has "Power Off" displayed finally in the System Progress column after "Power Off" is set.

System | Partition | Switch | User Administration | Network Configuration | Maintenance Logout
>Partition >Power Control

Power Control Refresh Help

Select a Power Control option for one or more partitions, then click the Apply button to take effect.

| # | Partition Name | Status | Power Status | System Progress | Power Control | Force Power Off Delay |
|----|----------------|--------|--------------|-----------------|-----------------|-----------------------|
| 0 | Partition#0 | OK | On | OS Running | (Not specified) | min |
| 2 | Partition#2 | OK | Standby | Power Off | (Not specified) | min |
| 3 | Partition#3 | OK | Standby | Power Off | (Not specified) | min |
| 4 | Partition#4 | OK | Standby | Power Off | (Not specified) | min |
| 6 | Partition#6 | OK | On | OS Running | (Not specified) | min |
| 8 | Partition#8 | OK | On | OS Running | (Not specified) | min |
| 10 | Partition#10 | OK | Standby | Power Off | (Not specified) | min |
| 12 | Partition#12 | OK | Standby | Power Off | (Not specified) | min |
| 14 | Partition#14 | OK | On | OS Running | (Not specified) | min |

Apply Cancel

Partition > Power Control page ("Power Off" operation completed)

4) Restore the DVD setting.

On the Partition > USB/Video/DVD Switch page, restore the USB/Video/DVD Switch setting, and click <Apply>.

(In PRIMEQUEST 510A, this procedure is unnecessary.)

System | Partition | Switch | User Administration | Network Configuration | Maintenance | Logout

>Partition >USB/Video/DVD Switch

☐ Power Control
☐ Schedule
☒ USB/Video/DVD Switch
☐ Console Redirection Switch
☐ Partition Configuration
☐ Split Configuration
☐ Reserved SB Configuration
☐ Partition#0
☐ Partition#2
☐ Partition#3
☐ Partition#4
☐ Partition#6
☐ Partition#8
☐ Partition#10
☐ Partition#12
☐ Partition#14

USB/Video/DVD Switch

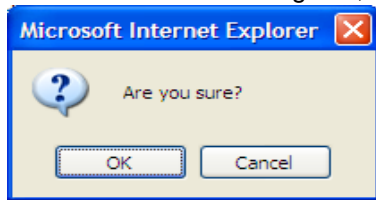
Select partition to connect USB, Video, or DVD respectively, then click the Apply button to take effect.

| # | Partition Name | Status | Power Status | USB | Video | DVD |
|------|----------------|--------|--------------|----------------------------------|----------------------------------|----------------------------------|
| 0 | Partition#0 | OK | On | <input type="radio"/> | <input type="radio"/> | <input type="radio"/> |
| 2 | Partition#2 | OK | Standby | <input type="radio"/> | <input type="radio"/> | <input type="radio"/> |
| 3 | Partition#3 | OK | Standby | <input type="radio"/> | <input type="radio"/> | <input type="radio"/> |
| 4 | Partition#4 | OK | Standby | <input type="radio"/> | <input type="radio"/> | <input type="radio"/> |
| 6 | Partition#6 | OK | On | <input type="radio"/> | <input type="radio"/> | <input type="radio"/> |
| 8 | Partition#8 | OK | On | <input type="radio"/> | <input type="radio"/> | <input type="radio"/> |
| 10 | Partition#10 | OK | Standby | <input type="radio"/> | <input type="radio"/> | <input type="radio"/> |
| 12 | Partition#12 | OK | Standby | <input type="radio"/> | <input type="radio"/> | <input type="radio"/> |
| 14 | Partition#14 | OK | On | <input type="radio"/> | <input type="radio"/> | <input type="radio"/> |
| Free | | | | <input checked="" type="radio"/> | <input checked="" type="radio"/> | <input checked="" type="radio"/> |

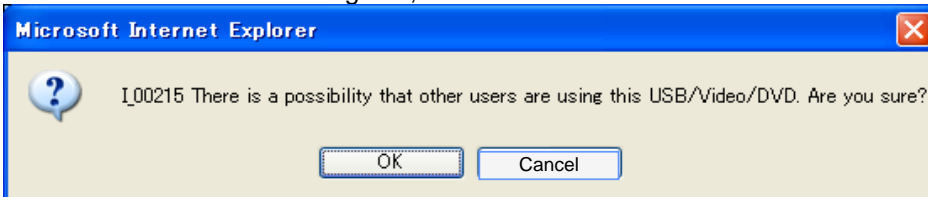
Apply Cancel

Partition > USB/Video/DVD Switch page (DVD switch selection)

In the confirmation dialog box, click <OK>.



In another confirmation dialog box, click <OK>.



In the completion dialog box, click <OK>.



Appendix A Lists of the Folder Hierarchy on the Firmware CD

[PQ520]

| Model name | Specification | Number displayed on screen | Firmware/EFI driver | Directry Path | Filename | Confirmation of version number |
|------------|--|----------------------------|---------------------|--|-----------------|--------------------------------|
| MC-08FC7 | Delivery No:CA06657-E311 Maintenance:CA05950-1020 | LP10000 | EFI tool | IPQ520\Emulex_FC\EFI_tool | Elxcli400A1.efi | |
| | | | Firmware | 1.92A1 IPQ520\Emulex_FC\MC08FC71\Firm_1.92A1 | td192a1.all | TS1.92A1 |
| | | | EFI driver | 3.21A5 IPQ520\Emulex_FC\MC08FC71\EFI_3.21A5 | TE321A5.PR | TE3.21A5 |
| | | | | 4.00A1 IPQ520\Emulex_FC\MC08FC71\EFI_4.00A1 | TE400A1.PR | TE4.00A1 |
| MC-08FC3 | Delivery No:CA06657-E303 Maintenance:CA05951-9610 | LP11000 | EFI tool | IPQ520\Emulex_FC\EFI_tool | Elxcli400A1.efi | |
| | | | Firmware | 2.72A2 IPQ520\Emulex_FC\MC08FC31\Firm_2.72A2 | bd272a2.all | BS2.72A2 |
| | | | | 2.80A4 IPQ520\Emulex_FC\MC08FC31\Firm_2.80A4 | bd280a4.all | BS2.80A4 |
| | | | EFI driver | 3.21A5 IPQ520\Emulex_FC\MC08FC31\EFI_3.21A5 | BE321A5.PR | BE3.21A5 |
| MC-08FC4 | Delivery No:CA06657-E304 Maintenance:CA05951-9611 | LP11002 | EFI tool | IPQ520\Emulex_FC\EFI_tool | Elxcli400A1.efi | |
| | | | Firmware | 2.72A2 IPQ520\Emulex_FC\MC08FC41\Firm_2.72A2 | bf272a2.all | BS2.72A2 |
| | | | | 2.80A4 IPQ520\Emulex_FC\MC08FC41\Firm_2.80A4 | bf280a4.all | BS2.80A4 |
| | | | EFI driver | 3.21A5 IPQ520\Emulex_FC\MC08FC41\EFI_3.21A5 | BE321A5.PR | BE3.21A5 |
| MC-08FC5 | Delivery No:CA06657-E305 Maintenance:CA05951-9612 | LPe11000 | EFI tool | IPQ520\Emulex_FC\EFI_tool | Elxcli400A1.efi | |
| | | | Firmware | 2.72A2 IPQ520\Emulex_FC\MC08FC51\Firm_2.72A2 | zd272a2.all | ZS2.72A2 |
| | | | | 2.80A4 IPQ520\Emulex_FC\MC08FC51\Firm_2.80A4 | zd280a4.all | ZS2.80A4 |
| | | | EFI driver | 3.21A5 IPQ520\Emulex_FC\MC08FC51\EFI_3.21A5 | ZE321A5.PR | ZE3.21A5 |
| MC-08FC6 | Delivery No:CA06657-E306 Maintenance:CA05951-9613 | LPe11002 | EFI tool | IPQ520\Emulex_FC\EFI_tool | Elxcli400A1.efi | |
| | | | Firmware | 2.72A2 IPQ520\Emulex_FC\MC08FC61\Firm_2.72A2 | zf272a2.all | ZS2.72A2 |
| | | | | 2.80A4 IPQ520\Emulex_FC\MC08FC61\Firm_2.80A4 | zf280a4.all | ZS2.80A4 |
| | | | EFI driver | 3.21A5 IPQ520\Emulex_FC\MC08FC61\EFI_3.21A5 | ZE321A5.PR | ZE3.21A5 |
| | | | | 4.00A1 IPQ520\Emulex_FC\MC08FC61\EFI_4.00A1 | ZE400A1.PR | ZE4.00A1 |

[PQ580/540]

| Model name | Specification | Number displayed on screen | Firmware/EFI driver | Directry Path | Filename | Confirmation of version number |
|------------|--|----------------------------|---------------------|--|-----------------|--------------------------------|
| MC-08FC7 | Delivery No:CA06657-E311 Maintenance:CA05950-1020 | LP10000 | EFI tool | IPQ580_540\Emulex_FC\EFI_tool | Elxcli400A1.efi | |
| | | | Firmware | 1.92A1 IPQ580_540\Emulex_FC\MC08FC71\Firm_1.92A1 | td192a1.all | TS1.92A1 |
| | | | EFI driver | 3.21A5 IPQ580_540\Emulex_FC\MC08FC71\EFI_3.21A5 | TE321A5.PR | TE3.21A5 |
| | | | | 4.00A1 IPQ580_540\Emulex_FC\MC08FC71\EFI_4.00A1 | TE400A1.PR | TE4.00A1 |
| MC-08FC3 | Delivery No:CA06657-E303 Maintenance:CA05951-9610 | LP11000 | EFI tool | IPQ580_540\Emulex_FC\EFI_tool | Elxcli400A1.efi | |
| | | | Firmware | 2.72A2 IPQ580_540\Emulex_FC\MC08FC31\Firm_2.72A2 | bd272a2.all | BS2.72A2 |
| | | | | 2.80A4 IPQ580_540\Emulex_FC\MC08FC31\Firm_2.80A4 | bd280a4.all | BS2.80A4 |
| | | | EFI driver | 3.21A5 IPQ580_540\Emulex_FC\MC08FC31\EFI_3.21A5 | BE321A5.PR | BE3.21A5 |
| MC-08FC4 | Delivery No:CA06657-E304 Maintenance:CA05951-9611 | LP11002 | EFI tool | IPQ580_540\Emulex_FC\EFI_tool | Elxcli400A1.efi | |
| | | | Firmware | 2.72A2 IPQ580_540\Emulex_FC\MC08FC41\Firm_2.72A2 | bf272a2.all | BS2.72A2 |
| | | | | 2.80A4 IPQ580_540\Emulex_FC\MC08FC41\Firm_2.80A4 | bf280a4.all | BS2.80A4 |
| | | | EFI driver | 3.21A5 IPQ580_540\Emulex_FC\MC08FC41\EFI_3.21A5 | BE321A5.PR | BE3.21A5 |
| MC-08FC5 | Delivery No:CA06657-E305 Maintenance:CA05951-9612 | LPe11000 | EFI tool | IPQ580_540\Emulex_FC\EFI_tool | Elxcli400A1.efi | |
| | | | Firmware | 2.72A2 IPQ580_540\Emulex_FC\MC08FC51\Firm_2.72A2 | zd272a2.all | ZS2.72A2 |
| | | | | 2.80A4 IPQ580_540\Emulex_FC\MC08FC51\Firm_2.80A4 | zd280a4.all | ZS2.80A4 |
| | | | EFI driver | 3.21A5 IPQ580_540\Emulex_FC\MC08FC51\EFI_3.21A5 | ZE321A5.PR | ZE3.21A5 |
| MC-08FC6 | Delivery No:CA06657-E306 Maintenance:CA05951-9613 | LPe11002 | EFI tool | IPQ580_540\Emulex_FC\EFI_tool | Elxcli400A1.efi | |
| | | | Firmware | 2.72A2 IPQ580_540\Emulex_FC\MC08FC61\Firm_2.72A2 | zf272a2.all | ZS2.72A2 |
| | | | | 2.80A4 IPQ580_540\Emulex_FC\MC08FC61\Firm_2.80A4 | zf280a4.all | ZS2.80A4 |
| | | | EFI driver | 3.21A5 IPQ580_540\Emulex_FC\MC08FC61\EFI_3.21A5 | ZE321A5.PR | ZE3.21A5 |
| | | | | 4.00A1 IPQ580_540\Emulex_FC\MC08FC61\EFI_4.00A1 | ZE400A1.PR | ZE4.00A1 |

[PQ520A/520X]

| Model name | Specification | Number displayed on screen | Firmware/EFI driver | Directry Path | Filename | Confirmation of version number |
|------------|--|----------------------------|---------------------|--|----------------------------|--------------------------------|
| MC-08FC7 | Delivery No:CA06657-E311 Maintenance:CA05950-1020 | LP10000 | EFI tool | IPQ520A_520X\Emulex_FC\EFI tool | Elxcli400A1.efi | |
| | | | Firmware | 1.92A1 IPQ520A_520X\Emulex_FC\MC08FC71\Firm_1.92A1 | ld192a1.all | TS1.92A1 |
| | | | EFI driver | 3.21A5 IPQ520A_520X\Emulex_FC\MC08FC71\EFI_3.21A5 4.00A1 IPQ520A_520X\Emulex_FC\MC08FC71\EFI_4.00A1 | TE321A5.PRG TE400A1.PRG | TE3.21A5 TE4.00A1 |
| MC-08FC3 | Delivery No:CA06657-E303 Maintenance:CA05951-9610 | LP11000 | EFI tool | IPQ520A_520X\Emulex_FC\EFI tool | Elxcli400A1.efi | |
| | | | Firmware | 2.72A2 IPQ520A_520X\Emulex_FC\MC08FC31\Firm_2.72A2 2.80A4 IPQ520A_520X\Emulex_FC\MC08FC31\Firm_2.80A4 | bd272a2.all bd280a4.all | BS2.72A2 BS2.80A4 |
| | | | EFI driver | 3.21A5 IPQ520A_520X\Emulex_FC\MC08FC31\EFI_3.21A5 4.00A1 IPQ520A_520X\Emulex_FC\MC08FC31\EFI_4.00A1 | BE321A5.PRG BE400A1.PRG | BE3.21A5 BE4.00A1 |
| MC-08FC4 | Delivery No:CA06657-E304 Maintenance:CA05951-9611 | LP11002 | EFI tool | IPQ520A_520X\Emulex_FC\EFI tool | Elxcli400A1.efi | |
| | | | Firmware | 2.72A2 IPQ520A_520X\Emulex_FC\MC08FC41\Firm_2.72A2 2.80A4 IPQ520A_520X\Emulex_FC\MC08FC41\Firm_2.80A4 | bf272a2.all bf280a4.all | BS2.72A2 BS2.80A4 |
| | | | EFI driver | 3.21A5 IPQ520A_520X\Emulex_FC\MC08FC41\EFI_3.21A5 4.00A1 IPQ520A_520X\Emulex_FC\MC08FC41\EFI_4.00A1 | BE321A5.PRG BE400A1.PRG | BE3.21A5 BE4.00A1 |
| MC-08FC5 | Delivery No:CA06657-E305 Maintenance:CA05951-9612 | LPe11000 | EFI tool | IPQ520A_520X\Emulex_FC\EFI tool | Elxcli400A1.efi | |
| | | | Firmware | 2.72A2 IPQ520A_520X\Emulex_FC\MC08FC51\Firm_2.72A2 2.80A4 IPQ520A_520X\Emulex_FC\MC08FC51\Firm_2.80A4 | zd272a2.all zd280a4.all | ZS2.72A2 ZS2.80A4 |
| | | | EFI driver | 3.21A5 IPQ520A_520X\Emulex_FC\MC08FC51\EFI_3.21A5 4.00A1 IPQ520A_520X\Emulex_FC\MC08FC51\EFI_4.00A1 | ZE321A5.PRG ZE400A1.PRG | ZE3.21A5 ZE4.00A1 |
| MC-08FC6 | Delivery No:CA06657-E306 Maintenance:CA05951-9613 | LPe11002 | EFI tool | IPQ520A_520X\Emulex_FC\EFI tool | Elxcli400A1.efi | |
| | | | Firmware | 2.72A2 IPQ520A_520X\Emulex_FC\MC08FC61\Firm_2.72A2 2.80A4 IPQ520A_520X\Emulex_FC\MC08FC61\Firm_2.80A4 | zf272a2.all zf280a4.all | ZS2.72A2 ZS2.80A4 |
| | | | EFI driver | 3.21A5 IPQ520A_520X\Emulex_FC\MC08FC61\EFI_3.21A5 4.00A1 IPQ520A_520X\Emulex_FC\MC08FC61\EFI_4.00A1 | ZE321A5.PRG ZE400A1.PRG | ZE3.21A5 ZE4.00A1 |
| MC-08FC8 | Delivery No:CA06657-E321 Maintenance:CA05954-1010 | LPe1250 | EFI tool | IPQ520A_520X\Emulex_FC\EFI tool | Elxcli400A1.efi | |
| | | | Firmware | 1.11A5 IPQ520A_520X\Emulex_FC\MC08FC81\Firm_1.11A5 | of111a5.all | OS1.11A5 |
| | | | EFI driver | 4.00A1 IPQ520A_520X\Emulex_FC\MC08FC81\EFI_4.00A1 | OE400A1.PRG | OE4.00A1 |
| MC-08FC9 | Delivery No:CA06657-E322 Maintenance:CA05954-1011 | LPe12002 | EFI tool | IPQ520A_520X\Emulex_FC\EFI tool | Elxcli400A1.efi | |
| | | | Firmware | 1.11A5 IPQ520A_520X\Emulex_FC\MC08FC91\Firm_1.11A5 | ud111a5.all | US1.11A5 |
| | | | EFI driver | 4.00A1 IPQ520A_520X\Emulex_FC\MC08FC91\EFI_4.00A1 | UE400A1.PRG | UE4.00A1 |

[PQ580A/540A]

| Model name | Specification | Number displayed on screen | Firmware/EFI driver | Directry Path | Filename | Confirmation of version number |
|------------|--|----------------------------|---------------------|--|----------------------------|--------------------------------|
| MC-08FC7 | Delivery No:CA06657-E311 Maintenance:CA05950-1020 | LP10000 | EFI tool | IPQ580A_540A\Emulex_FC\EFI tool | Elxcli400A1.efi | |
| | | | Firmware | 1.92A1 IPQ580A_540A\Emulex_FC\MC08FC71\Firm_1.92A1 | ld192a1.all | TS1.92A1 |
| | | | EFI driver | 3.21A5 IPQ580A_540A\Emulex_FC\MC08FC71\EFI_3.21A5 4.00A1 IPQ580A_540A\Emulex_FC\MC08FC71\EFI_4.00A1 | TE321A5.PRG TE400A1.PRG | TE3.21A5 TE4.00A1 |
| MC-08FC3 | Delivery No:CA06657-E303 Maintenance:CA05951-9610 | LP11000 | EFI tool | IPQ580A_540A\Emulex_FC\EFI tool | Elxcli400A1.efi | |
| | | | Firmware | 2.72A2 IPQ580A_540A\Emulex_FC\MC08FC31\Firm_2.72A2 2.80A4 IPQ580A_540A\Emulex_FC\MC08FC31\Firm_2.80A4 | bd272a2.all bd280a4.all | BS2.72A2 BS2.80A4 |
| | | | EFI driver | 3.21A5 IPQ580A_540A\Emulex_FC\MC08FC31\EFI_3.21A5 4.00A1 IPQ580A_540A\Emulex_FC\MC08FC31\EFI_4.00A1 | BE321A5.PRG BE400A1.PRG | BE3.21A5 BE4.00A1 |
| MC-08FC4 | Delivery No:CA06657-E304 Maintenance:CA05951-9611 | LP11002 | EFI tool | IPQ580A_540A\Emulex_FC\EFI tool | Elxcli400A1.efi | |
| | | | Firmware | 2.72A2 IPQ580A_540A\Emulex_FC\MC08FC41\Firm_2.72A2 2.80A4 IPQ580A_540A\Emulex_FC\MC08FC41\Firm_2.80A4 | bf272a2.all bf280a4.all | BS2.72A2 BS2.80A4 |
| | | | EFI driver | 3.21A5 IPQ580A_540A\Emulex_FC\MC08FC41\EFI_3.21A5 4.00A1 IPQ580A_540A\Emulex_FC\MC08FC41\EFI_4.00A1 | BE321A5.PRG BE400A1.PRG | BE3.21A5 BE4.00A1 |
| MC-08FC5 | Delivery No:CA06657-E305 Maintenance:CA05951-9612 | LPe11000 | EFI tool | IPQ580A_540A\Emulex_FC\EFI tool | Elxcli400A1.efi | |
| | | | Firmware | 2.72A2 IPQ580A_540A\Emulex_FC\MC08FC51\Firm_2.72A2 2.80A4 IPQ580A_540A\Emulex_FC\MC08FC51\Firm_2.80A4 | zd272a2.all zd280a4.all | ZS2.72A2 ZS2.80A4 |
| | | | EFI driver | 3.21A5 IPQ580A_540A\Emulex_FC\MC08FC51\EFI_3.21A5 4.00A1 IPQ580A_540A\Emulex_FC\MC08FC51\EFI_4.00A1 | ZE321A5.PRG ZE400A1.PRG | ZE3.21A5 ZE4.00A1 |
| MC-08FC6 | Delivery No:CA06657-E306 Maintenance:CA05951-9613 | LPe11002 | EFI tool | IPQ580A_540A\Emulex_FC\EFI tool | Elxcli400A1.efi | |
| | | | Firmware | 2.72A2 IPQ580A_540A\Emulex_FC\MC08FC61\Firm_2.72A2 2.80A4 IPQ580A_540A\Emulex_FC\MC08FC61\Firm_2.80A4 | zf272a2.all zf280a4.all | ZS2.72A2 ZS2.80A4 |
| | | | EFI driver | 3.21A5 IPQ580A_540A\Emulex_FC\MC08FC61\EFI_3.21A5 4.00A1 IPQ580A_540A\Emulex_FC\MC08FC61\EFI_4.00A1 | ZE321A5.PRG ZE400A1.PRG | ZE3.21A5 ZE4.00A1 |
| MC-08FC8 | Delivery No:CA06657-E321 Maintenance:CA05954-1010 | LPe1250 | EFI tool | IPQ580A_540A\Emulex_FC\EFI tool | Elxcli400A1.efi | |
| | | | Firmware | 1.11A5 IPQ580A_540A\Emulex_FC\MC08FC81\Firm_1.11A5 | of111a5.all | OS1.11A5 |
| | | | EFI driver | 4.00A1 IPQ580A_540A\Emulex_FC\MC08FC81\EFI_4.00A1 | OE400A1.PRG | OE4.00A1 |
| MC-08FC9 | Delivery No:CA06657-E322 Maintenance:CA05954-1011 | LPe12002 | EFI tool | IPQ580A_540A\Emulex_FC\EFI tool | Elxcli400A1.efi | |
| | | | Firmware | 1.11A5 IPQ580A_540A\Emulex_FC\MC08FC91\Firm_1.11A5 | ud111a5.all | US1.11A5 |
| | | | EFI driver | 4.00A1 IPQ580A_540A\Emulex_FC\MC08FC91\EFI_4.00A1 | UE400A1.PRG | UE4.00A1 |

[PQ510A]

| Model name | Specification | Number displayed on screen | Firmware/EFI driver | Directory Path | Filename | Confirmation of version number |
|------------|--|----------------------------|---------------------|--|-----------------|--------------------------------|
| MC-08FC5 | Delivery No:CA06657-E305 Maintenance:CA05951-9612 | LPe11000 | EFI tool | PQ510A\Emulex_FC\EFI_tool | Elxcli400A1.efi | |
| | | | Firmware | 2.72A2 PQ510A\Emulex_FC\MC08FC51\Firm_2.72A2 | zd272a2.all | ZS2.72A2 |
| | | | | 2.80A4 PQ510A\Emulex_FC\MC08FC51\Firm_2.80A4 | zd280a4.all | ZS2.80A4 |
| | | | EFI driver | 3.21A5 PQ510A\Emulex_FC\MC08FC51\EFI_3.21A5 | ZE321A5.PRG | ZE3.21A5 |
| MC-08FC6 | Delivery No:CA06657-E306 Maintenance:CA05951-9613 | LPe11002 | EFI tool | PQ510A\Emulex_FC\EFI_tool | Elxcli400A1.efi | |
| | | | Firmware | 2.72A2 PQ510A\Emulex_FC\MC08FC61\Firm_2.72A2 | zl272a2.all | ZS2.72A2 |
| | | | | 2.80A4 PQ510A\Emulex_FC\MC08FC61\Firm_2.80A4 | zl280a4.all | ZS2.80A4 |
| | | | EFI driver | 3.21A5 PQ510A\Emulex_FC\MC08FC61\EFI_3.21A5 | ZE321A5.PRG | ZE3.21A5 |
| MC-08FC8 | Delivery No:CA06657-E321 Maintenance:CA05954-1010 | LPe1250 | EFI tool | PQ510A\Emulex_FC\EFI_tool | Elxcli400A1.efi | |
| | | | Firmware | 1.11A5 PQ510A\Emulex_FC\MC08FC81\Firm_1.11A5 | of111a5.all | OS1.11A5 |
| | | | EFI driver | 4.00A1 PQ510A\Emulex_FC\MC08FC81\EFI_4.00A1 | OE400A1.PRG | OE4.00A1 |
| | | | | | | |
| MC-08FC9 | Delivery No:CA06657-E322 Maintenance:CA05954-1011 | LPe12002 | EFI tool | PQ510A\Emulex_FC\EFI_tool | Elxcli400A1.efi | |
| | | | Firmware | 1.11A5 PQ510A\Emulex_FC\MC08FC91\Firm_1.11A5 | ud111a5.all | US1.11A5 |
| | | | EFI driver | 4.00A1 PQ510A\Emulex_FC\MC08FC91\EFI_4.00A1 | UE400A1.PRG | UE4.00A1 |
| | | | | | | |

Corrective actions for error messages

| Error message | Cause | Corrective action |
|--------------------------|--|---|
| Unable to Open the file. | The folder path is incorrect. The file name is incorrect. | Enter the correct folder path. Enter the correct file name. |
| Incompatible Image. | Incompatible firmware has been selected. | Confirm that the firmware of this version number is compatible with the corresponding adapter card. |

FUJITSU