

# How to update PRIMEQUEST Fibre Channel Card Firmware/EFI driver

The fourth edition  
May 20, 2009

## Preface

## Purpose

This manual describes the work required for updating the Fibre Channel card firmware/EFI driver compatible with drivers for the Fibre Channel cards (MC-08FC31/41/51/61/71/81/91) supplied for PRIMEQUEST servers used in Windows Server environments.

## Intended Readers

This manual is intended for system administrators.

## Constitution

This manual is organized as follows.

Chapter and title	Description
Chapter 1: Fibre Channel Card Firmware/EFI driver	Describe the firmware/EFI driver compatible with the Fibre Channel card driver for PRIMEQUEST.
Chapter 2: Application of Firmware/EFI driver	Describe the flow for setting the firmware/EFI driver that is compatible with a driver.
Chapter 3: Fibre Channel Card Firmware/EFI driver Update Procedures	Describe the preparations required for changing the firmware/EFI driver and explain the procedures for updating it.
Appendix : Lists of the Folder Hierarchy on the Firmware CD	Describe the directory paths to the corresponding firmware/EFI driver contained on the Firmware CD
Exhibit : Directions for Fibre Channel Card Settings	Provides directions for the confirmation and the setting of Fibre Channel card firmware/EFI driver compatible with each Fibre Channel driver for Windows Server 2003.

•Revision History

Publisher : Fujitsu Limited  
May, 2009 publication [4.0]

Edition	Page	Date	Description
1.0	All	Des. 10, 2007	First issued
2.0	43	Jul. 15. 2008	Add PRIMEQUEST 500A Series
3.0	All	Arp. 20, 2009	Add driver 2.10a7 and EFI driver update procedure Delete driver 1.11a3
4.0	All	May. 20, 2009	Add 8GFC card

Trademark

Windows and Windows Server are registered trademarks or trademarks of Microsoft Corporation or its subsidiaries in the United States and other countries.

All other product names mentioned herein the trademarks or registered trademarks of their respective owners.

Copyright(c) 1981-2009 Microsoft Corporation. All rights reserved.

Copyright(c) 2008, 2009 Emulex Corporation.

All Rights Reserved, Copyright(c) Fujitsu Limited 2008, 2009

## **Contents**

Preface

Purpose

Intended Readers

Constitution

Revision History

### **Chapter 1 Fibre Channel Card Firmware/EFI driver**

#### **1.1 Firmware/EFI driver Compatible with the Fibre Channel Card Drivers for PRIMEQUEST**

##### **1.1.1 Firmware/EFI driver for the Fibre Channel cards supported by Windows Server 2003 drivers**

##### **1.1.2 Confirming the firmware/EFI driver version**

### **Chapter 2 Application of Firmware/EFI driver**

#### **2.1 Flow for Setting Firmware/EFI driver Compatible with a Driver for Windows Server 2003**

### **Chapter 3 Fibre Channel Card Firmware/EFI driver Update Procedures**

#### **3.1 Preliminary Information**

#### **3.2 Required Setup**

#### **3.3 Notes**

#### **3.4 Flow for Updating Fibre Channel Card Firmware/EFI driver**

#### **3.5 Fibre Channel Card Firmware/EFI driver Update Procedures**

#### **3.6 Fibre Channel Card Firmware/EFI driver Update Procedures in Detail**

### **Appendix Lists of the Folder Hierarchy on the Firmware CD**

### **Exhibit Directions for Fibre Channel Card Settings**

## Chapter 1 Fibre Channel Card Firmware/EFI driver

### 1.1 Firmware/EFI driver Compatible with the Fibre Channel Card Drivers for PRIMEQUEST

When an FC driver for Windows Server 2003 is installed, firmware/EFI driver for the Fibre Channel card supported by the driver must be updated.

This firmware update work is required at the time of PRIMEQUEST new installation, the Fibre Channel driver change time, and the Fibre Channel card replacement/addition time. For details of the work, see Section 2.1, "Flow for Setting Firmware/EFI driver Compatible with a Driver for Windows Server 2003."

#### 1.1.1 Firmware/EFI driver for the Fibre Channel cards supported by Windows Server 2003 drivers

Note: Only the following pairs of drivers and cards can be used.

Model name	Number shown in brackets on label for Fibre Channel card	Windows Server 2003 driver		
		1.30a6(V6.1.30.6) for Win SP2	1.30a9(V6.1.30.9) for Win SP1/2	2.10a7(V6.2.10.7) for Win SP2
MC-08FC11	CA05950-0966	Firmware : 1.91a5 EFI driver : 3.11x1		Firmware : 1.92a1 EFI driver : 4.00a1
MC-08FC71	CA05950-1020			
MC-08FC31	CA05951-9610	Firmware : 2.70a5 EFI driver : 3.11x1		Firmware : 2.80a4 EFI driver : 4.00a1
MC-08FC41	CA05951-9611			
MC-08FC51	CA05951-9612			
MC-08FC61	CA05951-9613			
MC-08FC81	CA05954-1010	Disable		Firmware : 1.11a5 EFI driver : 4.00a1
MC-08FC91	CA05954-1011			

#### - Remarks -

MC-08FC11 : 2GFC PCI-X Single Port Channel (LP10000)  
MC-08FC71 : 2GFC PCI-X Single Port Channel (LP10000)  
MC-08FC31 : 4GFC PCI-X Single Port Channel (LP11000)  
MC-08FC41 : 4GFC PCI-X Dual Port Channel (LP11002)  
MC-08FC51 : 4GFC PCI-Express Single Port Channel (LPe11000)  
MC-08FC61 : 4GFC PCI-Express Dual Port Channel (LPe11002)  
MC-08FC81 : 8GFC PCI-Express Single Port Channel (LPe1250)  
MC-08FC91 : 8GFC PCI-Express Dual Port Channel (LPe12002)

\*We recommend the latest Windows Server 2003 driver.

(The driver that the numerical value of the version is the biggest is the latest.)

\*Apply the same version Windows Server 2003 driver to all FC cards.

(When 8GFC is added newly on already using 2GFC/4GFC in the state that Windows Server 2003 driver is the version 1.30a6/1.30a9, apply Windows Server 2003 driver version 2.10a7 and the appropriate firmware/EFI driver to all FC cards.)

\* The 2G Fibre Channel card (MC08-FC11/71) firmware/EFI driver that is compatible with Windows Server 2003 driver 1.11a3(V6.1.11.3), 1.30a6(V6.1.30.6) or 1.30a9(V6.1.30.9) is set by default. This 2G Fibre Channel card firmware/EFI driver need not be updated as described here. (Products shipped after June 2007)

Note: For the Fibre Channel cards purchased before June 2007, there are the cases that the firmware/EFI driver compatible with Windows Server 2003 1.30a6(V6.1.30.6) and 1.30a9(V6.1.30.9) are not set by default.

\* Firmware CD(C122-E018-XXC2) is version 26 or later.

As for "Firmware CD", the version 26 or later CD is pertinent.

\* XX in "C122-E018-XXC2" represents an arbitrary value.

(For example, if XX is 26, it represents Version 26.)

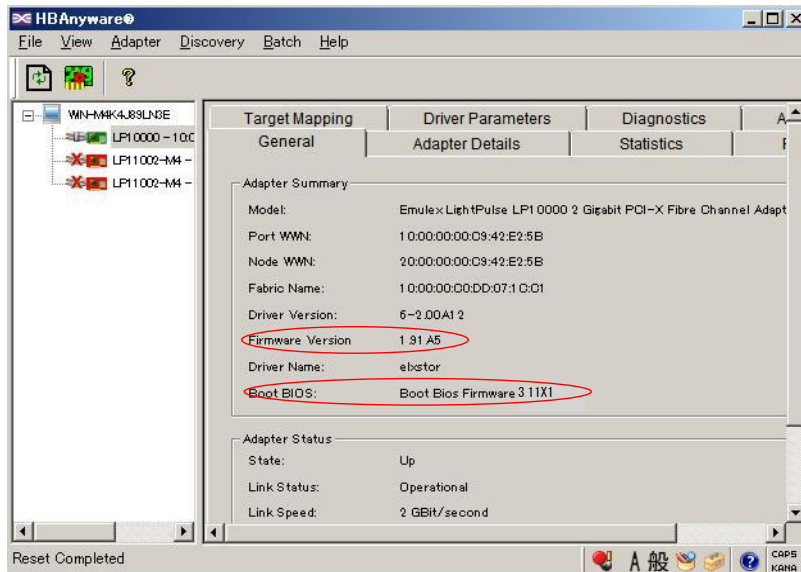
### 1.1.2 Confirming the Firmware/EFI driver version

Confirm the current firmware/EFI driver version by one of the following procedures below.

#### (1) Confirmation with a Windows tool (HBAAnyware)

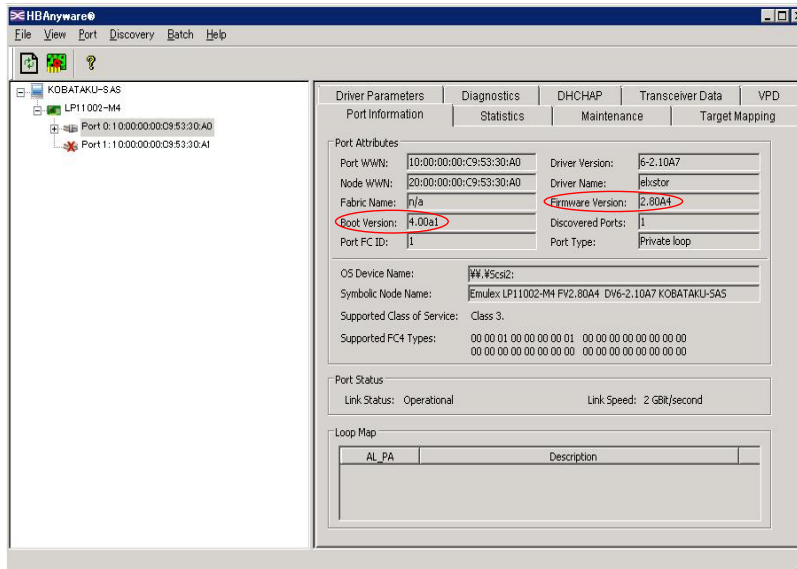
< Windows Server 2003 driver is version 1.30a6/1.30a9>

1. Start HBAAnyware.  
Click the [Start] button, and then click [All Programs] - [Emulex] - [HBAAnyware].  
HBAAnyware is started.
2. Select the corresponding Fibre Channel card (port). Select the tab [General].
3. Confirm the Firmware version in "Firmware Version". Confirm the EFI driver version in "Boot BIOS".



< Windows Server 2003 driver is version 2.10a7>

1. Start HBAnyware.  
Click the [Start] button, and then click [All Programs] - [Emulex] - [HBAnyware].  
HBAnyware is started.
2. Select the corresponding Fibre Channel card (port). Select the tab [Port Information].
3. Confirm the Firmware version in "Firmware Version". Confirm the EFI driver version in "Boot Version".



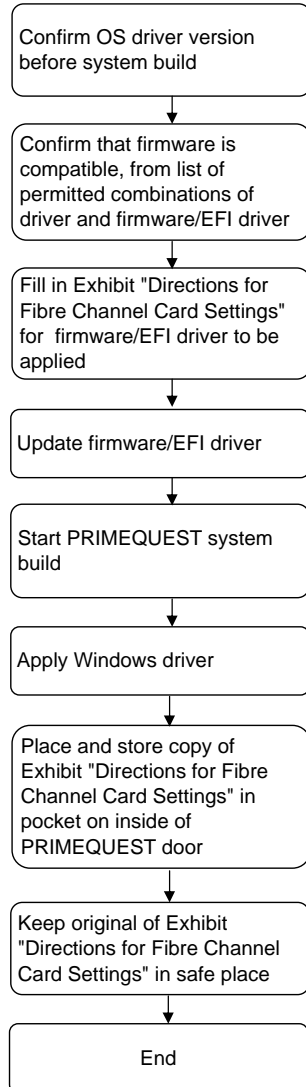
(2) Confirmation with an EFI tool (Emulex FC EFI-Bios Firmware Update Utility)

See Section 3.6.3-3 (or 3.6.9-3), "Confirm the version number before the update," in the section titled Fibre Channel Card Firmware/EFI driver Update Procedures in Detail."

## Chapter 2 Application of Firmware/EFI driver

### 2.1 Flow for Setting Firmware/EFI driver Compatible with a Driver for Windows Server 2003

(1) PRIMEQUEST new installation



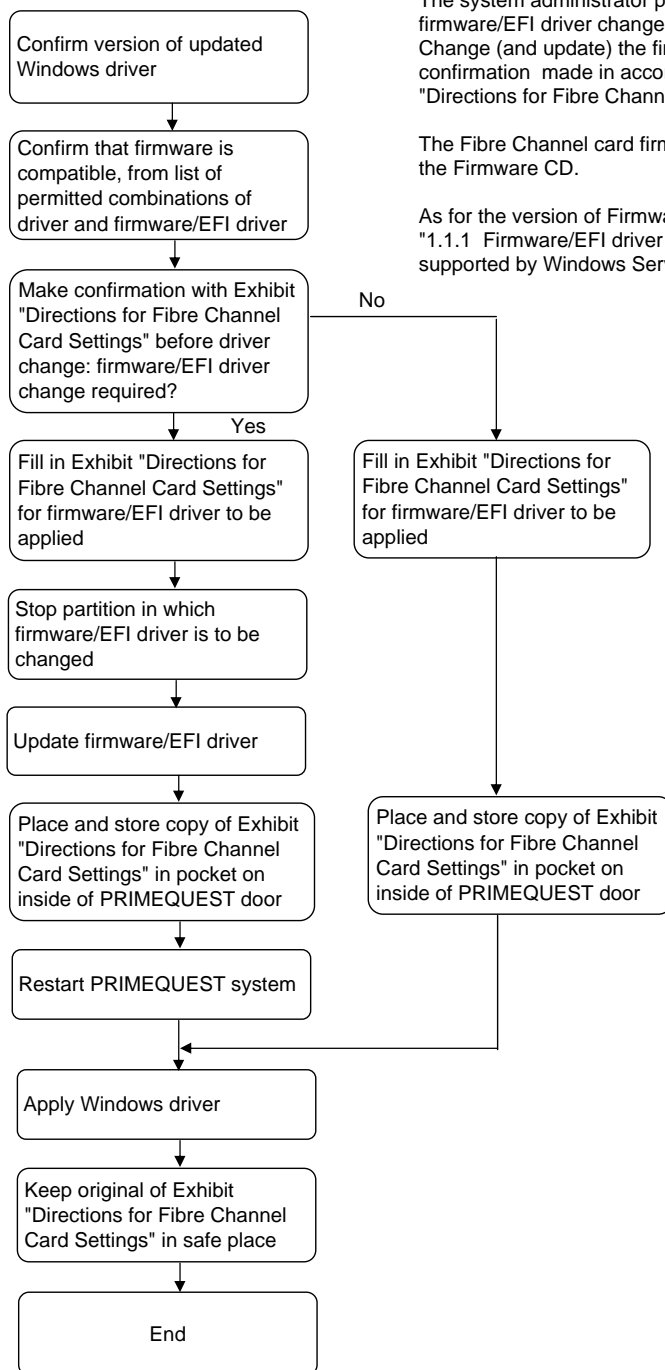
The system administrator performs the work for firmware/EFI driver changes.

Change (and update) the firmware/EFI driver, with confirmation made in accordance with Exhibit "Directions for Fibre Channel Card Settings".

The Fibre Channel card firmware/EFI driver is updated with the Firmware CD.

As for the version of Firmware CD, refer to "1.1.1 Firmware/EFI driver for the Fibre Channel cards supported by Windows Server 2003 drivers"

(2) Fibre Channel driver change



The system administrator performs the work for firmware/EFI driver changes.  
Change (and update) the firmware/EFI driver, with confirmation made in accordance with Exhibit "Directions for Fibre Channel Card Settings".

The Fibre Channel card firmware/EFI driver is updated with the Firmware CD.

As for the version of Firmware CD, refer to "1.1.1 Firmware/EFI driver for the Fibre Channel cards supported by Windows Server 2003 drivers"

### (3) Fibre Channel card

Confirm information on drivers and firmware/EFI driver used up to this point, from Exhibit "Directions for Fibre Channel Card Settings"

Stop partition in which firmware/EFI driver is to be changed

Update firmware/EFI driver

Place and store copy of Exhibit "Directions for Fibre Channel Card Settings" in pocket on inside of PRIMEQUEST door

Make necessary settings for replacement card:  
• Boot path setting  
• FCSW/RAID setting  
etc.

Restart PRIMEQUEST system

Apply Windows driver

Keep original of Exhibit "Directions for Fibre Channel Card Settings" in safe place

End

The system administrator performs the work for firmware/EFI driver changes.  
Change (and update) the firmware/EFI driver, with confirmation made in accordance with Exhibit "Directions for Fibre Channel Card Settings".

The Fibre Channel card firmware/EFI driver is updated with the Firmware CD.

As for the version of Firmware CD, refer to "1.1.1 Firmware for the Fibre Channel cards supported by Windows Server 2003 drivers"

If the work for firmware/EFI driver changes is unnecessary in Fibre Channel card replacement (i.e., the card at the shipment time has firmware with the same revision number), this task is unnecessary.

## Chapter 3 Fibre Channel Card Firmware/EFI driver Update Procedures

### 3.1 Preliminary Information

This chapter explains how to change the firmware/EFI driver for the Fibre Channel cards supplied for PRIMEQUEST servers.

The model names, purchasing numbers, and maintenance part numbers of the Fibre Channel cards are as follows:

- MC-08FC11 (CA06657-E301 / CA05950-0966) --- 2G FC PCI-X Single Port
- MC-08FC71 (CA06657-E311 / CA05950-1020) --- 2G FC PCI-X Dual Port
- MC-08FC31 (CA06657-E303 / CA05951-9610) --- 4G FC PCI-X Single Port
- MC-08FC41 (CA06657-E304 / CA05951-9611) --- 4G FC PCI-X Dual Port
- MC-08FC51 (CA06657-E305 / CA05951-9612) --- 4G FC PCI-Ex Single Port
- MC-08FC61 (CA06657-E306 / CA05951-9613) --- 4G FC PCI-Ex Dual Port
- MC-08FC81 (CA06657-E321 / CA05954-1010) --- 8G FC PCI-Ex SinglePort
- MC-08FC91 (CA06657-E322 / CA05954-1011) --- 8G FC PCI-Ex DualPort

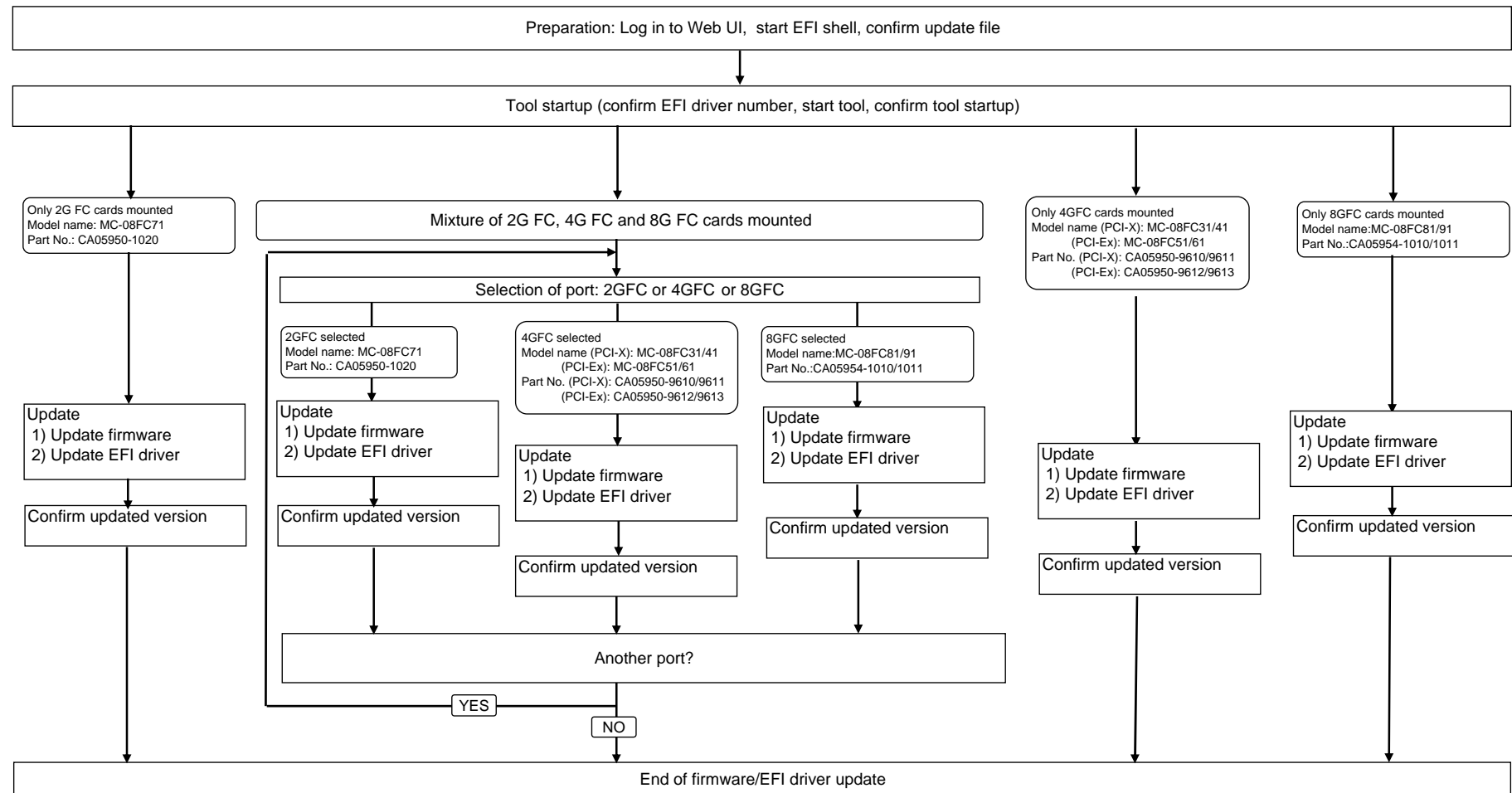
### 3.2 Required Setup

- (1) The control terminal must be able to perform Web-UI operations through terminal software or through the keyboard and monitor connected to the KVM interface of the PRIMEQUEST main unit.
- (2) Before beginning the work for firmware/EFI driver changes, confirm that the corresponding partition is in the standby state (in which its operation is stopped and only the power to its power supply circuit is still on).
- (3) Firmware/EFI driver is updated with the Firmware CD (C122-E018-XXC2).
  - \* XX in "C122-E018-XXC2" represents an arbitrary value  
(For example, if XX is 26, it represents Version 26.)

### 3.3 Notes

- (1) An update tool that can run under the EFI shell is used to change firmware/EFI driver for the Fibre Channel cards.  
Confirm the methods for operations in the section titled "Fibre Channel Firmware/EFI driver Update Procedures" and the subsequent section.
- (2) Firmware/EFI driver must be updated for every channel of the mounted Fibre Channel card.
  - Single port channel: MC-08FC11/31/51/71/81  
→ Channels to update: One per Fibre Channel card
  - Dual port channel: MC-08FC41/61/91  
→ Channels to update: Two per Fibre Channel card
- (3) The device names, firmware versions, EFI driver versions, directory structures, and file names that are described and displayed in screenshots in this manual are examples. When changing firmware/EFI driver, read and interpret this information appropriate to your environment.

### 3.4 Flow for Updating Fibre Channel Card Firmware/EFI driver



### 3.5 Fibre Channel Card Firmware/EFI driver Update Procedures

Select work procedure 1 or work procedure 2.

Item	Section No.	Work procedure 1	Section No.	Work procedure 2	Operations	Result and action
Preparation	Web-UI operations					
	3.6.1-1	Connect to the Web-UI			Connect to Web-UI and enter Power Control mode.	
	3.6.1-2	Boot Control / power-on / selection of [DVD]			Perform setting Boot Control, power-on and selecting DVD.	
	Confirmation of work terminal					
	Operation through KVM		Operation through terminal software			
			Console connection procedure		Prepare to start work from console screens.	
	3.6.1-3	Start the EFI shell	3.6.7-1	Start the EFI shell	Select "EFI Shell [Built-in]" on the EFI startup screen.	
	3.6.1-4	Confirm the file system (fs)	3.6.7-2	Confirm the file system (fs)	Confirm the fs number assigned to the DVD-ROM drive.	
	3.6.1-5	Confirm the Firmware CD	3.6.7-3	Confirm the Firmware CD	Move to the assigned fs location. Confirm that the Firmware CD is read by the ls command.	
Tool startup	3.6.2-1	Confirm the EFI driver number for the Fibre Channel device	3.6.8-1	Confirm the EFI driver number for the Fibre Channel device	Confirm this with the drivers command (-b is the page display option).	
	3.6.2-2	Delete the EFI driver	3.6.8-2	Delete the EFI driver	Delete the EFI driver with unload command.	
	3.6.2-3	Confirm after the EFI driver delete	3.6.8-3	Confirm after the EFI driver delete	Confirm the unloaded EFI driver is deleted.	
	3.6.2-4	Add the EFI driver	3.6.8-4	Add the EFI driver	Load the newly updated EFI driver with load command	
	3.6.2-5	Confirm after the EFI driver load	3.6.8-5	Confirm after the EFI driver load	Confirm the loaded EFI driver is loaded.	
	3.6.2-6	Enter the command for startup	3.6.8-6	Enter the command for startup	Start the tool with the drvclg command.	
	3.6.2-7	Confirm startup	3.6.8-7	Confirm startup	Confirm startup on the screen.	
Update	3.6.3-1	Select the adapter to be updated	3.6.9-1	Select the adapter to be updated	Select a listed adapter with the arrow keys. Note: Select one for every port of a Dual Port card.	
	3.6.3-2	Select "Firmware Update"	3.6.9-2	Select "Firmware Update"	Select "2. Firmware Update" with the arrow keys, and press [Enter]	*3
	3.6.3-3	Confirm the version number before the update	3.6.9-3	Confirm the version number before the update	Confirm the version number at the beginning of the "Firmware" / "EFIBoot" line on the screen.	
	3.6.3-4	Perform the update	3.6.9-4	Perform the update	Specify the directory path and file name of the update file	*1
	3.6.3-5	Complete the update procedure	3.6.9-5	Complete the update procedure	Press any key to complete the update process (which is followed by a return to the step in Section 3.6.3-2 or 3.6.9-2).	
Confirmation	3.6.4-1	Select "Firmware Update"	3.6.10-1	Select "Firmware Update"	Select "2. Firmware Update" with the arrow keys, and press [Enter]	
	3.6.4-2	Confirm the version number after the update	3.6.10-2	Confirm the version number after the update	Confirm the version number at the beginning of the "Firmware" / "EFIBoot" line on the screen.	*2
Work on another adapter	3.6.5	Updating another adapter	3.6.11	Updating another adapter	Repeat the update work for any associated adapter. Note: Perform an update for every port of a Dual Port card.	
	Go back in the procedure to Section 3.6.3-2 or 3.6.9-2 to update another adapter.					
Exiting EFI shell	3.6.6-1	Exit the tool	3.6.12-1	Exit the tool	Exit the tool after updating all corresponding adapters.	
	3.6.6-2	Enter "exit" in the EFI shell	3.6.12-2	Enter "exit" in the EFI shell		
	3.6.6-3	Eject the Firmware CD	3.6.12-3	Eject the Firmware CD	Eject the Firmware CD from the KVM DVD-ROM drive.	
Terminating Web-UI	Termination of Web-UI connection					
	3.6.13	Setting "Power Off" for the partition			Set "Power Off" for the partition.	

\*1 Syntax error occurs: Repeat the steps starting from the step in Section 3.6.3-4 or 3.6.9-4.  
 Execution error occurs: Repeat the steps starting from the step in Section 3.6.2-2 or 3.6.8-2.  
 If the process takes more than one minute, treat it as an execution error since a normal process ends within several seconds

\*2 Unexpected value occurs: Repeat the steps starting from the step in Section 3.6.2-2 or 3.6.8-2.

\*3 The file name entered at the step explained in Section 3.6.3-4 or 3.6.9-4 is automatically selected for the firmware/EFI driver update.

## 3.6 Fibre Channel Card Firmware/EFI driver Update Procedures in Detail

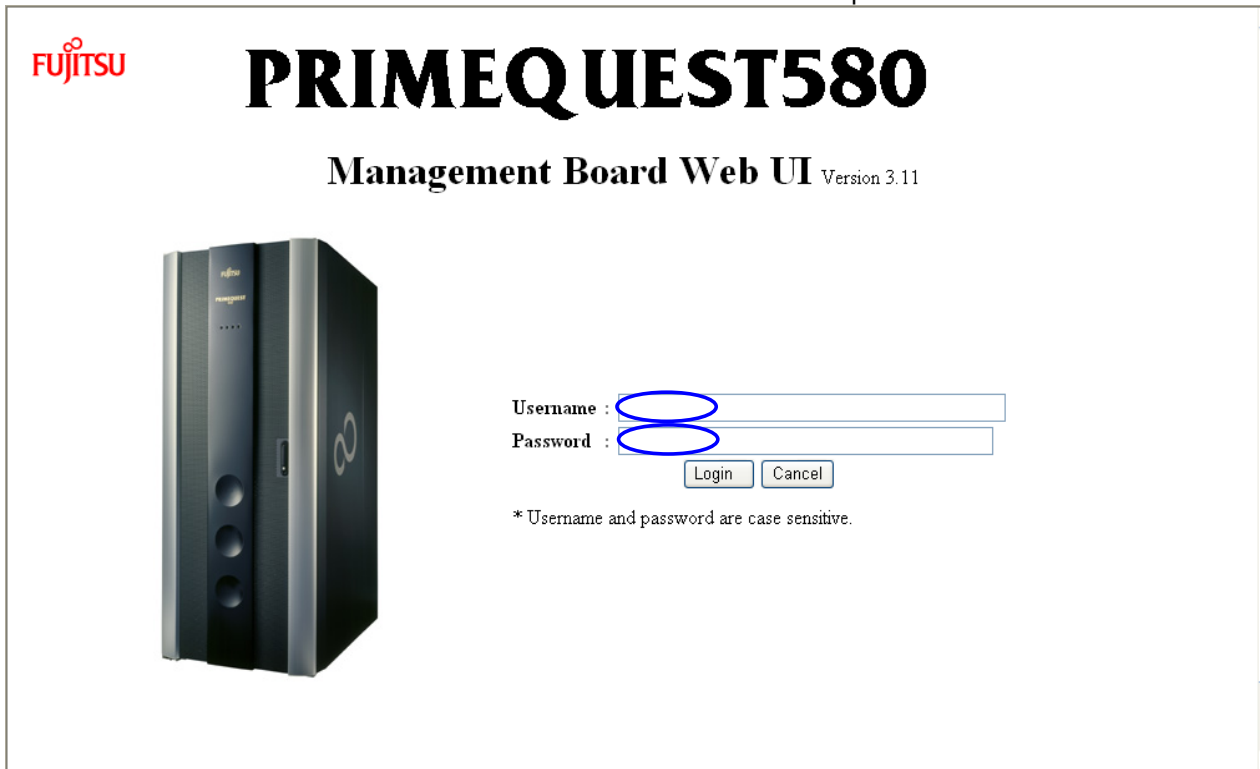
### Preparation

#### 3.6.1-1 Connect to the Web-UI

1) Connect to the Web-UI with the following Login URL:

http://<<MMB-IP>>:<<http-port-number>>

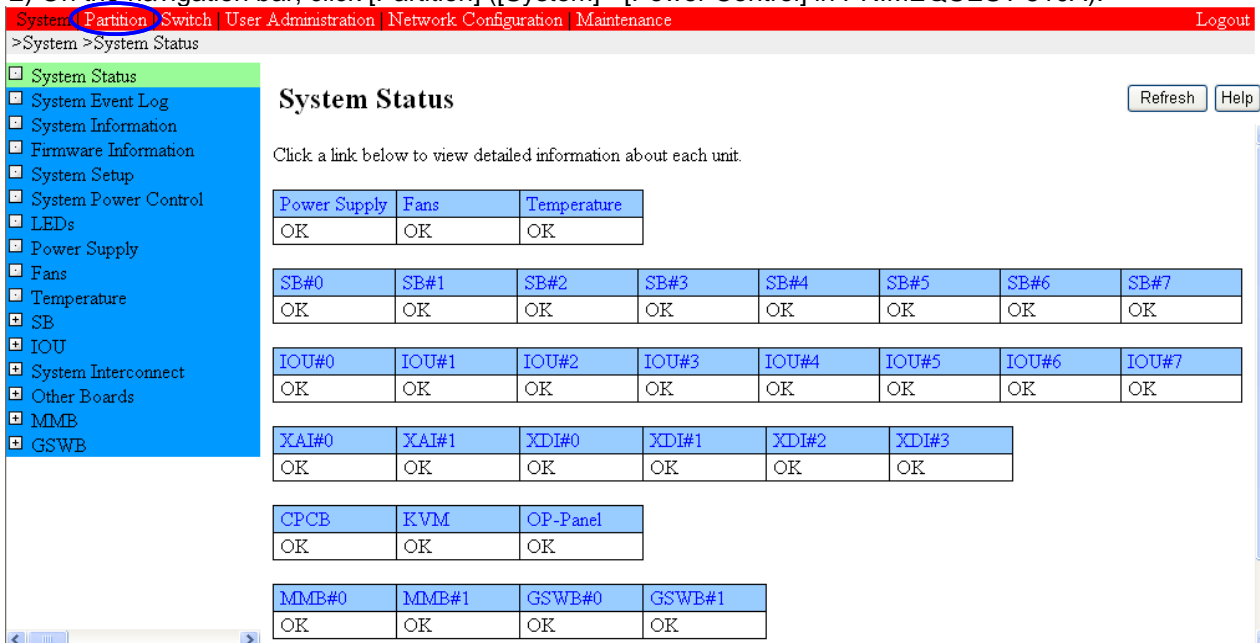
Username: Administrator account Password: Administrator account password



The image shows the login page of the PRIMEQUEST580 Management Board Web UI. At the top left is the Fujitsu logo. The title "PRIMEQUEST580" is in large, bold, black letters. Below it, "Management Board Web UI" is written in a smaller font, followed by "Version 3.11". On the left side, there is a 3D rendering of the server unit. On the right side, there are two input fields for "Username" and "Password". Both fields have a blue oval drawn around them. Below the password field are "Login" and "Cancel" buttons. A note at the bottom states: "\* Username and password are case sensitive."

Login page (for preparations)

2) On the navigation bar, click [Partition] ([System] - [Power Control] in PRIMEQUEST 510A).



The image is a screenshot of the "System Status" page in the web UI. At the top, there is a red navigation bar with links: "System", "Partition" (which is circled in red), "Switch", "User Administration", "Network Configuration", and "Maintenance". A "Logout" link is on the far right. Below the navigation bar, the breadcrumb path ">System >System Status" is shown. On the left, there is a blue sidebar menu with various system components listed, including "System Status", "System Event Log", "System Information", "Firmware Information", "System Setup", "System Power Control", "LEDs", "Power Supply", "Fans", "Temperature", "SB", "IOU", "System Interconnect", "Other Boards", "MMB", and "GSWB". The main content area is titled "System Status" and includes a "Refresh" and "Help" button. Below the title, there is a text prompt: "Click a link below to view detailed information about each unit." This is followed by several tables showing the status of various components, all of which are "OK".

Power Supply	Fans	Temperature
OK	OK	OK

SB#0	SB#1	SB#2	SB#3	SB#4	SB#5	SB#6	SB#7
OK	OK	OK	OK	OK	OK	OK	OK

IOU#0	IOU#1	IOU#2	IOU#3	IOU#4	IOU#5	IOU#6	IOU#7
OK	OK	OK	OK	OK	OK	OK	OK

XAI#0	XAI#1	XDI#0	XDI#1	XDI#2	XDI#3
OK	OK	OK	OK	OK	OK

CPCB	KVM	OP-Panel
OK	OK	OK

MMB#0	MMB#1	GSWB#0	GSWB#1
OK	OK	OK	OK

System Status page

- 3) Go to the Partition > Power Control page (System > Power Control page in PRIMEQUEST 510A), and confirm the information there.

System | Partition | Switch | User Administration | Network Configuration | Maintenance Logout

>Partition >Power Control

**Power Control**

Refresh Help

Select a Power Control option for one or more partitions, then click the Apply button to take effect.

#	Partition Name	Status	Power Status	System Progress	Power Control	Force Power Off Delay
0	Partition#0	OK	On	OS Running	(Not specified)	<input type="checkbox"/> <input type="checkbox"/> min
2	Partition#2	OK	Standby	Power Off	(Not specified)	<input type="checkbox"/> <input type="checkbox"/> min
3	Partition#3	OK	Standby	Power Off	(Not specified)	<input type="checkbox"/> <input type="checkbox"/> min
4	Partition#4	OK	Standby	Power Off	(Not specified)	<input type="checkbox"/> <input type="checkbox"/> min
6	Partition#6	OK	On	OS Running	(Not specified)	<input type="checkbox"/> <input type="checkbox"/> min
8	Partition#8	OK	On	OS Running	(Not specified)	<input type="checkbox"/> <input type="checkbox"/> min
10	Partition#10	OK	Standby	Power Off	(Not specified)	<input type="checkbox"/> <input type="checkbox"/> min
12	Partition#12	OK	Standby	Power Off	(Not specified)	<input type="checkbox"/> <input type="checkbox"/> min
14	Partition#14	OK	On	OS Running	(Not specified)	<input type="checkbox"/> <input type="checkbox"/> min

Apply Cancel

### Partition > Power Control page

### \*PRIMEQUEST 510A

System | User Administration | Network Configuration | Maintenance Logout

>System >Power Control

**Power Control**

Refresh Help

Select a Power Control option, then click the Apply button to take effect.

Status	OK
Power Status	On
System Progress	OS Running
Power Control	Power Off (Not specified)
Force Power Off Delay	<input type="checkbox"/> <input type="checkbox"/> min
Boot Selector	No Override Note: The Boot Selector only applies for one system restart. After the system restart, this setting returns to "No Override" automatically.
POST(Power On Self Test)	Fast Boot

Apply Cancel

### System > Power Control page

### 3.6.1-2 Change the boot control mode

- 1) Select the partition of the Fibre Channel card whose firmware is to be updated. Click [Boot Control].  
(In PRIMEQUEST 510A, this procedure is unnecessary.)

System | Partition | Switch | User Administration | Network Configuration | Maintenance | Logout

>Partition >Partition#12 >Boot Control

- Power Control
- Schedule
- USB/Video/DVD Switch
- Console Redirection Switch
- Partition Configuration
- Split Configuration
- Reserved SB Configuration
- Partition#0
- Partition#2
- Partition#3
- Partition#4
- Partition#6
- Partition#8
- Partition#10
- Partition#12**
- Information
- Boot Control**
- ASR Control
- Console Redirection
- Mode
- PSA
- Partition#14

## Boot Control

Click the Apply Button to apply all changes.

Boot Selector	No Override Note: The boot Selector only applies for one partition restart. After the partition restart, this setting returns to 'No Override' automatically.
POST(Power On Self Test)	Standard Diagnosis

Apply Cancel

Partition > Boot Control page

- 2) Select a Boot Selector mode.

Set "Force boot into EFI Boot Manager" as the Boot Selector mode, and click <Apply>.

(This prevents automatic startup with an arbitrary OS (the one selected by the cursor position) when the Wait Count time (default: 30 seconds) has elapsed on the EFI shell startup screen.)

**Note: This "Force boot into EFI Boot Manager" setting for a partition is cleared when the partition is started. It must be set again each time that the Fibre Channel firmware is updated.**

System | Partition | Switch | User Administration | Network Configuration | Maintenance | Logout

>Partition >Partition#12 >Boot Control

- Power Control
- Schedule
- USB/Video/DVD Switch
- Console Redirection Switch
- Partition Configuration
- Split Configuration
- Reserved SB Configuration
- Partition#0
- Partition#2
- Partition#3
- Partition#4
- Partition#6
- Partition#8
- Partition#10
- Partition#12**
- Information
- Boot Control**
- ASR Control
- Console Redirection
- Mode
- PSA
- Partition#14

## Boot Control

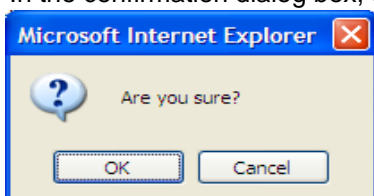
Click the Apply Button to apply all changes.

Boot Selector	<b>Force boot into EFI Boot Manager</b> Note: The boot Selector only applies for one partition restart. After the partition restart, this setting returns to 'No Override' automatically.
POST(Power On Self Test)	Standard Diagnosis

Apply Cancel

Partition > Boot Control page (with the Boot Selector setting)

In the confirmation dialog box, click <OK>.



In the completion dialog box, click <OK>.



- 3) On the Partition > Power Control page (System > Power Control page in PRIMEQUEST 510A), turn on the power to the partition. [Part 1]  
On the navigation bar, click [Partition].

System | **Partition** | Switch | User Administration | Network Configuration | Maintenance | Logout

>Partition >Power Control

**Power Control** Refresh Help

Select a Power Control option for one or more partitions, then click the Apply button to take effect.

#	Partition Name	Status	Power Status	System Progress	Power Control	Force Power Off Delay
0	Partition#0	OK	On	OS Running	(Not specified)	<input type="checkbox"/> min
2	Partition#2	OK	Standby	Power Off	(Not specified)	<input type="checkbox"/> min
3	Partition#3	OK	Standby	Power Off	(Not specified)	<input type="checkbox"/> min
4	Partition#4	OK	Standby	Power Off	(Not specified)	<input type="checkbox"/> min
6	Partition#6	OK	On	OS Running	(Not specified)	<input type="checkbox"/> min
8	Partition#8	OK	On	OS Running	(Not specified)	<input type="checkbox"/> min
10	Partition#10	OK	Standby	Power Off	(Not specified)	<input type="checkbox"/> min
12	Partition#12	OK	Standby	Power Off	(Not specified)	<input type="checkbox"/> min
14	Partition#14	OK	On	OS Running	(Not specified)	<input type="checkbox"/> min

Apply Cancel

Partition > Power Control page

- 4) On the Partition > Power Control page (System > Power Control page in PRIMEQUEST 510A), turn on the power to the partition. [Part 2]  
Set [Power On] in the appropriate Power Control list box, and click <Apply>.

System | **Partition** | Switch | User Administration | Network Configuration | Maintenance | Logout

>Partition >Power Control

**Power Control** Refresh Help

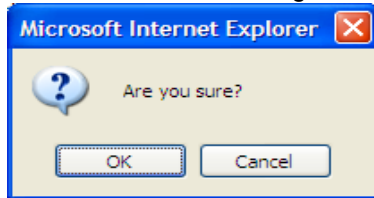
Select a Power Control option for one or more partitions, then click the Apply button to take effect.

#	Partition Name	Status	Power Status	System Progress	Power Control	Force Power Off Delay
0	Partition#0	OK	On	OS Running	(Not specified)	<input type="checkbox"/> min
2	Partition#2	OK	Standby	Power Off	(Not specified)	<input type="checkbox"/> min
3	Partition#3	OK	Standby	Power Off	(Not specified)	<input type="checkbox"/> min
4	Partition#4	OK	Standby	Power Off	(Not specified)	<input type="checkbox"/> min
6	Partition#6	OK	On	OS Running	(Not specified)	<input type="checkbox"/> min
8	Partition#8	OK	On	OS Running	(Not specified)	<input type="checkbox"/> min
10	Partition#10	OK	Standby	Power Off	(Not specified)	<input type="checkbox"/> min
12	Partition#12	OK	Standby	Power Off	<b>Power On</b>	<input type="checkbox"/> min
14	Partition#14	OK	On	OS Running	(Not specified)	<input type="checkbox"/> min

Apply Cancel

Partition > Power Control page ("Power On" set)

In the confirmation dialog box, click <OK>.



- 5) On the Partition > Power Control page (System > Power Control page in PRIMEQUEST 510A), turn on the power to the partition. [Part 3]  
Confirm that the partition has "Power On In Progress" displayed in the System Progress column after "Power On" is set.

System | Partition | Switch | User Administration | Network Configuration | Maintenance Logout

>Partition >Power Control

**Power Control** Refresh Help

Select a Power Control option for one or more partitions, then click the Apply button to take effect.

#	Partition Name	Status	Power Status	System Progress	Power Control	Force Power Off Delay
0	Partition#0	OK	On	OS Running	(Not specified)	min
2	Partition#2	OK	Standby	Power Off	(Not specified)	min
3	Partition#3	OK	Standby	Power Off	(Not specified)	min
4	Partition#4	OK	Standby	Power Off	(Not specified)	min
6	Partition#6	OK	On	OS Running	(Not specified)	min
8	Partition#8	OK	On	OS Running	(Not specified)	min
10	Partition#10	OK	Standby	Power Off	(Not specified)	min
12	Partition#12	OK	Standby	Power On In Progress	(Not specified)	min
14	Partition#14	OK	On	OS Running	(Not specified)	min

Apply Cancel

Partition > Power Control page ("Power On" operation started)

- 6) On the Partition > Power Control page (System > Power Control page in PRIMEQUEST 510A), turn on the power to the partition. [Part 4]  
Confirm that the partition has "POST 1094h" displayed finally in the System Progress column after "Power On" is set.

System | Partition | Switch | User Administration | Network Configuration | Maintenance Logout

>Partition >Power Control

**Power Control** Refresh Help

Select a Power Control option for one or more partitions, then click the Apply button to take effect.

#	Partition Name	Status	Power Status	System Progress	Power Control	Force Power Off Delay
0	Partition#0	OK	On	OS Running	(Not specified)	min
2	Partition#2	OK	Standby	Power Off	(Not specified)	min
3	Partition#3	OK	Standby	Power Off	(Not specified)	min
4	Partition#4	OK	Standby	Power Off	(Not specified)	min
6	Partition#6	OK	On	OS Running	(Not specified)	min
8	Partition#8	OK	On	OS Running	(Not specified)	min
10	Partition#10	OK	Standby	Power Off	(Not specified)	min
12	Partition#12	OK	On	POST 1094h	(Not specified)	min
14	Partition#14	OK	On	OS Running	(Not specified)	min

Apply Cancel

Partition > Power Control page ("Power On" operation completed)

7) Select [DVD].

On the Partition > USB/Video/DVD Switch page, select the USB/Video/DVD switch for this partition, and click <Apply>.

Never make this change during firmware/EFI driver update processing.

Note: Write down the current setting in order to restore the setting after the firmware/EFI driver update.

(In PRIMEQUEST 510A, this procedure is unnecessary.)

System | Partition | Switch | User Administration | Network Configuration | Maintenance | Logout

>Partition >USB/Video/DVD Switch

☐ Power Control  
☐ Schedule  
☒ USB/Video/DVD Switch  
☐ Console Redirection Switch  
☐ Partition Configuration  
☐ Split Configuration  
☐ Reserved SB Configuration  
☐ Partition#0  
☐ Partition#2  
☐ Partition#3  
☐ Partition#4  
☐ Partition#6  
☐ Partition#8  
☐ Partition#10  
☐ Partition#12  
☐ Partition#14

### USB/Video/DVD Switch

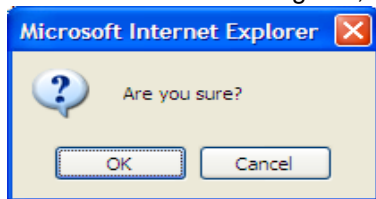
Select partition to connect USB, Video, or DVD respectively, then click the Apply button to take effect.

#	Partition Name	Status	Power Status	USB	Video	DVD
0	Partition#0	OK	On	<input type="radio"/>	<input type="radio"/>	<input type="radio"/>
2	Partition#2	OK	Standby	<input type="radio"/>	<input type="radio"/>	<input type="radio"/>
3	Partition#3	OK	Standby	<input type="radio"/>	<input type="radio"/>	<input type="radio"/>
4	Partition#4	OK	Standby	<input type="radio"/>	<input type="radio"/>	<input type="radio"/>
6	Partition#6	OK	On	<input type="radio"/>	<input type="radio"/>	<input type="radio"/>
8	Partition#8	OK	On	<input type="radio"/>	<input type="radio"/>	<input type="radio"/>
10	Partition#10	OK	Standby	<input type="radio"/>	<input type="radio"/>	<input type="radio"/>
12	Partition#12	OK	On	<input checked="" type="radio"/>	<input checked="" type="radio"/>	<input checked="" type="radio"/>
14	Partition#14	OK	On	<input type="radio"/>	<input type="radio"/>	<input type="radio"/>
Free				<input type="radio"/>	<input type="radio"/>	<input type="radio"/>

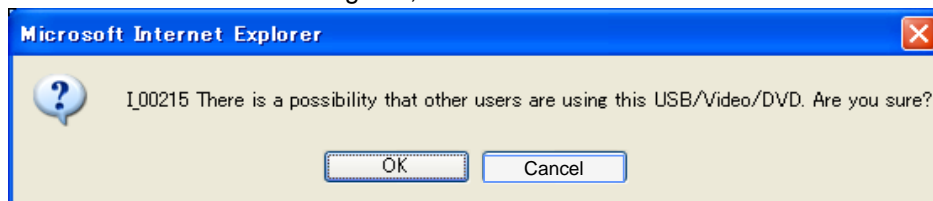
Apply Cancel

Partition > USB/Video/DVD Switch page (DVD switch selection)

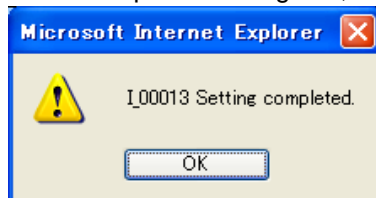
In the confirmation dialog box, click <OK>.



In another confirmation dialog box, click <OK>.



In the completion dialog box, click <OK>.



8) Insert the Firmware CD into the DVD-ROM drive.

## Preparation (Continued)    \*\* Operation through KVM \*\*

### 3.6.1-3 Start the EFI shell

From the Boot Option Maintenance menu for EFI displayed on the flat panel display screen, select "EFI Shell [Built-in]," and press the [Enter] key.

"EFI Shell [Built-in]" selected on the terminal software screen

```
EFI Boot Manager ver 1.10 [1.13]

Please select a boot option

Windows Server 2003, Datacenter
EFI Shell [Built-in]
DVD/ACPI (PNP0A03,0)/Pci (1D|1)/Usb (0, 0)/Usb (1, 0)
Network/ACPI (PNP0A03,0)/Pci (1E|0)/Pci (8|0)/Mac (000B5D6F801B)
Boot Option Maintenance
Setup Menu

Use ^ and v to change option(s). Use Enter to select an option
```

\* Screenshot of the screen (The displayed menu varies depending on the user's settings.)

### 3.6.1-4 Confirm the file system (fs)

The next screen displayed is as shown below.

Confirm the fsN value assigned to the Firmware CD (here, it is fs0).

```
Loading.: EFI Shell [Built-in]
EFI Shell version 1.10 [1.13]
Device mapping table
fs0 : Acpi (PNP0A03,0)/Pci (1D|1)/Usb (0, 0)/Usb (0,
0)/CDROM (Entry0)/HD (Part1, Sig00000000)
fs1 : Acpi (PNP0A03,0)/Pci (1|1)/Pci (0|0)/Pci (1|0)/Scsi (Pun4, Lun0)/HD (Part1, Sig
41C4C48E-7253-4942-9F50-5547C7B1E6C4)
blk0 : Acpi (PNP0A03,0)/Pci (1D|1)/Usb (0, 0)/Usb (0, 0)
blk1 : Acpi (PNP0A03,0)/Pci (1D|1)/Usb (0, 0)/Usb (0, 0)/CDROM (Entry0)
*** : *****
blk6 : Acpi (PNP0A03,0)/Pci (1|1)/Pci (0|0)/Pci (1|0)/Scsi (Pun4, Lun0)/HD (Part3, Sig
715930EE-C30D-481F-BC83-83F17A640F30)

Shell>
```

If the fs number of the CD is not found:

Enter the following command from the EFI shell to reconnect the device.

**shell> reconnect -r[Enter]**

Upon the return to the EFI shell screen, enter the following command to display the device map again, and confirm the fs number assigned to the CD:

**shell> map -r[Enter]**

### 3.6.1-5 Confirm the Firmware CD

Move to the location indicated by the fs number assigned to the CD. Confirm that the CD is read normally by the ls command.

```
Shell>fs0:
fs0:>ls
Directory of: fs0:\

 03/10/08  01:42a                4,224  README. ja_JP. EUC. txt
 03/10/08  01:42a                4,350  README. ja_JP. SJIS. txt
 03/10/08  01:42a                4,922  README. ja_JP. UTF-8. txt
 03/10/08  01:42a                4,596  README. txt
 03/24/08  03:54p <DIR>                2,048  PQ420
 03/24/08  03:55p <DIR>                2,048  PQ480_440
 03/24/08  03:55p <DIR>                2,048  PQ510A
 03/24/08  03:56p <DIR>                2,048  PQ520
 03/24/08  03:56p <DIR>                2,048  PQ520A_520X
 03/24/08  03:57p <DIR>                2,048  PQ580_540
 03/24/08  04:04p <DIR>                2,048  PQ580A_540A
          4 File(s)              18,092 bytes
          7 Dir(s)
```

## Tool Startup

### 3.6.2-1 Confirm the EFI driver number for the Fibre Channel device

```
fs0:\> drivers -b
          T   D
D          Y C I
R          P F A
V  VERSION  E G G #D #C DRIVER NAME          IMAGE NAME
== ==
18 00000010 B - - 5 42 Pci Bus Driver
** *****
** *****
22 00031131 D X X 2 - Emulex SCSI Pass Thru Driver  PciRom Seg=000000
** ***** *
```

Confirm the numerical value NN at the beginning of the "Emulex SCSI Pass Thru Driver" line (here, it is 22).

#### Notes:

1. The value in the IMAGE NAME column varies depending on the EFI Driver version.
2. Even if "Emulex SCSI Pass Thru Driver" is displayed on multiple lines with different version numbers, confirm all of the numerical values NN at the beginning.

### 3.6.2-2 Delete the EFI driver

Delete all of the target EFI drivers with unload command.

```
fs0:\> unload 22
```

The number entered after "unload" is the numerical value confirmed in the step explained in Section 3.6.2-1.

```
fs0:\> unload 22
22: Image(PciRom Seg=00000000 Bus=29 Dev=01 Func=01 Image=0000) DriverBinding C
omponentName Configuration Diagnostics
Unload protocol image (y/n)? y
```

It asks "Unload protocol image (y/n)?". Delete it by inputting y and pushing Enter.

If there are plural target EFI drivers, delete all of them with unload command.

### 3.6.2-3 Confirm after the EFI driver delete

Confirm the unloaded EFI driver is deleted.

```
fs0:\> drivers -b
          T  D
D          Y C I
R          P F A
V  VERSION  E G G #D #C DRIVER NAME          IMAGE NAME
==  =====  =  =  =  ==  ==  =====
18 00000010 B - - 5 42 Pci Bus Driver
** *****
** *****
22 02000600 D X X 2 - LSI Logic Fusion MPT SAS Driver PciRom Seg=000000
** ***** *
```

### 3.6.2-4 Add the EFI driver

Load the newly updated EFI driver with load command.

```
fs0:\> load \PQ580A_540A\Emulex_FC\EFI_tool\Elxcli400A1.efi
```

As for the directory of the EFI driver, refer to "Appendix Lists of the Folder Hierarchy on the Firmware CD".

\*An EFI driver is loaded as TOOL on PRIMEQUEST system, it is not set to FC card.  
Setting to FC card is performed in Section 3.6.3-1.

Confirm the EFI driver is loaded correctly by the following message being displayed.

```
fs0:\> load \PQ580A_540A\Emulex_FC\EFI_tool\Elxcli400A1.efi
load: Image fs0: \PQ580A_540A\Emulex_FC\EFI_tool\Elxcli400A1.efi loaded at
0x7EFB4000 - Success
```

"0x7EFB4000" on the screen is a numerical value of an example.

### 3.6.2-5 Confirm after the EFI driver load

```
fs0:\> drivers -b
          T  D
D          Y C I
R          P F A
V  VERSION  E G G #D #C DRIVER NAME          IMAGE NAME
==  =====  =  =  =  ==  ==  =====
18 00000010 B - - 5 42 Pci Bus Driver
** *****
** *****
9A 00040011 B X X 2 1 Emulex SCSI Pass Thru Driver  elxcli400a1.efi
```

Confirm the EFI driver(here, it is elx321a5.efi) which is loaded in Section 3.6.2-4 is added in "IMAGE NAME"  
Confirm the numerical value NN at the beginning of the "Emulex SCSI Pass Thru Driver" line (here, it is 9A)

\*Perform the following update operation after performing above EFI driver additional operation.  
If it is not performed, FC card may not run normally.

### 3.6.2-6 Enter the command for startup

```
fs0:\> drvcfg -s 9A
```

The number entered after "-s" is the numerical value (NN) confirmed in the step explained in Section 3.6.2-5.

### 3.6.2-7 Confirm startup

Based on the screen displayed for startup, such as shown below, confirm that the tool has started.

```
-----
Emulex Fibre Channel EFI-Bios Utility, Ver: 4.00A1
-----

Emulex Adapters in this System: 001 thru 002

001: LP11002-M4      PCI-X  133MHz      Seg#: 00 Bus#: CB Dev#: 01 Func#: 00
002: LP11002-M4      PCI-X  133MHz      Seg#: 00 Bus#: CB Dev#: 01 Func#: 01
```

In the above screenshot, the system is equipped with one 4G (Dual Port) Fibre Channel adapter card.

Depending on the Fibre Channel adapter card equipped with, the card is displayed on two lines, with "Func#00" on the first (top) line and "Func#:01" on the second (bottom) line.

## Update

### 3.6.3-1 Select the adapter to be updated

If the card is a Dual Port card, apply the update to every port (Func#: xx) displayed.

Select the adapter with the up ( ↑ ) and down ( ↓ ) arrow keys, and press [Enter].

```
-----
Emulex Fibre Channel EFI-Bios Utility, Ver: 4.00A1
-----

Emulex Adapters in this System: 001 thru 002

001: LP11002-M4      PCI-X  133MHz      Seg#: 00 Bus#: CB Dev#: 01 Func#: 00
002: LP11002-M4      PCI-X  133MHz      Seg#: 00 Bus#: CB Dev#: 01 Func#: 01
```

**Note:** Each page of the screen displays lines for up to eight ports. To change the page for a system that has nine or more ports, use the right (<-->) and left (<-->) arrow keys.

### 3.6.3-2 Select "Firmware Update"

```
-----
Emulex Fibre Channel EFI-Bios Utility, Ver: 4.00A1
-----
001: LP11002-M4      PCI-X  133MHz   Seg#: 00 Bus#: CB Dev#: 01 Func#: 00
      HBA Status: Ready      Boot Bios : Enabled
      EFI Boot : BE3.11X1      Firmware  : BS2.70A5
-----

1. Setup Utility
2. Firmware Update
```

Select "2. Firmware Update" with the up ( ↑ ) and down ( ↓ ) arrow keys, and press [Enter]. The following screen is displayed.

```
-----
Emulex Fibre Channel EFI-Bios Utility, Ver: 4.00A1
-----
001: LP11002-M4      PCI-X  133MHz   Seg#: 00 Bus#: CB Dev#: 01 Func#: 00
      HBA Status: Ready      Boot Bios : Enabled
      EFI Boot : BE3.11X1      Firmware  : BS2.70A5
-----

1. Update Selected Adapter
2. Batch Mode Update
```

Select "1. Update Selected Adapter" with the up ( ↑ ) and down ( ↓ ) arrow keys, and press [Enter]. The following screen is displayed.

```
-----
Emulex Fibre Channel EFI-Bios Utility, Ver: 4.00A1
-----
001: LP11002-M4      PCI-X  133MHz   Seg#: 00 Bus#: CB Dev#: 01 Func#: 00
      EFI Boot : **3.11X1      SLI - 2   : B2F2.70A5
      Firmware  : **2.70A5      SLI - 3   : B3F2.70A5
      Port Name : 10000000C9537FB2 Kernel   : 1.20A1
-----

Directry Path      :
```

### 3.6.3-3 Confirm the version number before the update

Note: The first two characters in each version number vary depending on the adapter card. The characters are represented by "\*\*\*" in the following explanation.

**Confirm the version number on the "Firmware" or "EFI Boot" line before the update.**  
**Number displayed at "Firmware" for confirmation: \*\*2.70A5 (in this example)**  
**Number displayed at "EFI Boot" for confirmation: \*\*3.11X1 (in this example)**

### 3.6.3-4 Perform EFI/Firmware Update

Specify the directory path (fs\* is unnecessary), and press [Enter]. Specify the file name on the next line, and press [Enter].

If the specified path is incorrect, press [Enter] to go back to that line, and repeat this operation.

**For the folder hierarchy of each adapter card, see Appendix A, "Lists of the Folder Hierarchy on the Firmware CD."**

```
-----
Emulex Fibre Channel EFI-Bios Utility, Ver: 4.00A1
-----
001: LP11002-M4      PCI-X 133MHz      Seg#: 00 Bus#: CB Dev#: 01 Func#: 00
      EFI Boot : **3.11X1      SLI - 2 : B2F2.70A5
      Firmware : **2.70A5      SLI - 3 : B3F2.70A5
      Port Name : 10000000C9537FB2 Kernel : 1.20A1
-----
      Directry Path      : \PQ580A_540A\Emulex_FC\MC08FC31\EFI_4.00A1
      Filename           : BE400A1.PRG
```

#### <Update the EFI driver>

The following screen is displayed. The update is completed.

```
      Directry Path      : \PQ580A_540A\Emulex_FC\MC08FC31\EFI_4.00A1
      Filename           : BE400A1.PRG
      File Open          : Done
      Validate Adapter    : Done
      Flash Erase         : Done
      Flash Program       : Done
      WakeUp Parameter    : Updated
      Press any Key to Return to Previous Menu ...
```

\* Firmware update and EFI driver update are the same procedures.

Firmware and EFI driver are decided by the appointed "Directry Path" and "Filename".

#### <Update the firmware>

The following screen is displayed. The update is completed.

```
      Directry Path      : \PQ580A_540A\Emulex_FC\MC08FC31\Firm_2.80A4
      Filename           : bd280a4.all
      File Open          : Done
      Validate Adapter    : Done
      Flash Erase         : Done
      Flash Program       : Done
      WakeUp Parameter    : Updated
      Press any Key to Return to Previous Menu ...
```

### 3.6.3-5 Complete the update procedure

Press any key to return to the screen displayed for the step in Section 3.6.3-2.

```
-----
Emulex Fibre Channel EFI-Bios Utility, Ver: 4.00A1
-----
001: LP11002-M4      PCI-X  133MHz      Seg#: 00 Bus#: CB Dev#: 01 Func#: 00
      HBA Status: Ready      Boot Bios : Enabled
      EFI  Boot : BE4.00A1      Firmware  : BS2.80A4
-----

1. Update Selected Adapter
2. Batch Mode Update
```

Press Esc key twice to return to the screen displayed for the step in Section 3.6.3-1.

```
-----
Emulex Fibre Channel EFI-Bios Utility, Ver: 4.00A1
-----

Emulex Adapters in this System: 001 thru 002

001: LP11002-M4      PCI-X  133MHz      Seg#: 00 Bus#: CB Dev#: 01 Func#: 00
002: LP11002-M4      PCI-X  133MHz      Seg#: 00 Bus#: CB Dev#: 01 Func#: 01
```

### Confirmation

#### 3.6.4-1 Select "Firmware Update"

```
-----
Emulex Fibre Channel EFI-Bios Utility, Ver: 4.00A1
-----
001: LP11002-M4      PCI-X  133MHz      Seg#: 00 Bus#: CB Dev#: 01 Func#: 00
      HBA Status: Ready      Boot Bios : Enabled
      EFI  Boot : BE4.00A1      Firmware  : BS2.80A4
-----

1. Setup Utility
2. Firmware Update
```

Select "2. Firmware Update" with the up ( ↑ ) and down ( ↓ ) arrow keys, and press [Enter].  
The following screen is displayed.

```
-----
Emulex Fibre Channel EFI-Bios Utility, Ver: 4.00A1
-----
001: LP11002-M4      PCI-X  133MHz      Seg#: 00 Bus#: CB Dev#: 01 Func#: 00
      HBA Status: Ready      Boot Bios : Enabled
      EFI  Boot : BE4.00A1      Firmware  : BS2.80A4
-----

1. Update Selected Adapter
2. Batch Mode Update
```

Select "1. Update Selected Adapter" with the up ( ↑ ) and down ( ↓ ) arrow keys, and press [Enter].  
The following screen is displayed.

```
-----
Emulex Fibre Channel EFI-Bios Utility, Ver: 4.00A1
-----
001: LP11002-M4      PCI-X  133MHz      Seg#: 00 Bus#: CB Dev#: 01 Func#: 00
      EFI  Boot : **4.00A1      SLI - 2   : B2F2.80A4
      Firmware : **2.80A4      SLI - 3   : B3F2.80A4
      Port Name : 10000000C9537FB2  Kernel   : 1.20A1
-----

Directry Path      :
```

### 3.6.4-2 Confirm the version number after the update

Note: The first two characters in each version number vary depending on the adapter card. The characters are represented by "\*\*\*" in the following explanation. For details, see the rightmost column in the tables in Appendix A, "Lists of the Folder Hierarchy on the Firmware CD."

**Confirm the version number on the "Firmware" or "EFI Boot" line before the update.**

**Number displayed at "Firmware" for confirmation: \*\*2.80A4 (in this example)**

**Number displayed at "EFI Boot" for confirmation: \*\*4.00A1 (in this example)**

Upon completing confirmation of the final version number displayed for the update on the screen, press [Enter] with "Directory Path" and "Filename" left blank.

```
-----
Emulex Fibre Channel EFI-Bios Utility, Ver: 4.00A1
-----
001: LP11002-M4      PCI-X 133MHz      Seg#: 00 Bus#: CB Dev#: 01 Func#: 00
      EFI Boot : **4.00A1      SLI - 2 : B2F2.80A4
      Firmware : **2.80A4      SLI - 3 : B3F2.80A4
      Port Name : 10000000C9537FB2 Kernel : 1.20A1
-----
      Directory Path : (blank)
      Filename       : (blank)
```

\*Confirm the Firmware version is displayed on SLI2 and SLI3.  
If it is not displayed, the system may not run normally.

The following screen is displayed.

```
Directory Path : .
Filename       : No Filename Entered.

Press any Key to Return to Previous Menu ...
```

Press any key to return to the screen displayed for the step in Section 3.6.3-2.

```
-----
Emulex Fibre Channel EFI-Bios Utility, Ver: 4.00A1
-----
001: LP11002-M4      PCI-X 133MHz      Seg#: 00 Bus#: CB Dev#: 01 Func#: 00
      HBA Status: Ready      Boot Bios : Enabled
      EFI Boot : BE4.00A1      Firmware : BS2.80A4
-----

1. Update Selected Adapter
2. Batch Mode Update
```

Press Esc key twice to return to the screen displayed in the step in Section 3.6.3-1.

```
-----  
Emulex Fibre Channel EFI-Bios Utility, Ver: 4.00A1  
-----  
  
Emulex Adapters in this System: 001 thru 002  
  
001: LP11002-M4      PCI-X  133MHz      Seg#: 00 Bus#: CB Dev#: 01 Func#: 00  
002: LP11002-M4      PCI-X  133MHz      Seg#: 00 Bus#: CB Dev#: 01 Func#: 01
```

### Updating another adapter

Note: If the card is a Dual Port card, perform an update for the other port.

### 3.6.5 Updating another adapter

If adapters to be updated remain, select it with the up ( ↑ ) and down ( ↓ ) arrow keys, and press [Enter].

```
-----  
Emulex Fibre Channel EFI-Bios Utility, Ver: 4.00A1  
-----  
  
Emulex Adapters in this System: 001 thru 002  
  
001: LP11002-M4      PCI-X  133MHz      Seg#: 00 Bus#: CB Dev#: 01 Func#: 00  
002: LP11002-M4      PCI-X  133MHz      Seg#: 00 Bus#: CB Dev#: 01 Func#: 01
```

The screen returns to that shown in the step in Section 3.6.3-2.

## Exiting the EFI Shell

### 3.6.6-1 Exit the tool

Press [Enter] with "Directory Path" and "Filename" left blank.

```
-----
Emulex Fibre Channel EFI-Bios Utility, Ver: 4.00A1
-----
001: LP11002-M4      PCI-X  133MHz      Seg#: 00 Bus#: CB Dev#: 01 Func#: 00
      EFI Boot : **4.00A1      SLI - 2 : B2F2.80A4
      Firmware : **2.80A4      SLI - 3 : B3F2.80A4
      Port Name : 10000000C9537FB2 Kernel : 1.20A1
-----
      Directory Path : (blank)
      Filename       : (blank)
```

The following screen is displayed.

```
Directory Path : .
Filename       : No Filename Entered.

Press any Key to Return to Previous Menu ...
```

Press any key to return to the screen displayed for the step in Section 3.6.3-2.

```
-----
Emulex Fibre Channel EFI-Bios Utility, Ver: 4.00A1
-----
001: LP11002-M4      PCI-X  133MHz      Seg#: 00 Bus#: CB Dev#: 01 Func#: 00
      HBA Status: Ready      Boot Bios : Enabled
      EFI Boot : BE4.00A1      Firmware : BS2.80A4
-----

1. Update Selected Adapter
2. Batch Mode Update
```

Press Esc key twice to return to the screen displayed for the step in Section 3.6.3-1.

```
-----
Emulex Fibre Channel EFI-Bios Utility, Ver: 4.00A1
-----

Emulex Adapters in this System: 001 thru 002

001: LP11002-M4      PCI-X  133MHz      Seg#: 00 Bus#: CB Dev#: 01 Func#: 00
002: LP11002-M4      PCI-X  133MHz      Seg#: 00 Bus#: CB Dev#: 01 Func#: 01
```

Press the [Esc] key again to return to the EFI shell (exiting the tool).

```
fs0:\>
```

### 3.6.6-2 Enter "exit" in the EFI shell

Enter "exit" in the EFI shell to return to the EFI Boot Manager screen (the following screen).

```
EFI Boot Manager ver 1.10 [1.13]

Please select a boot option

Windows Server 2003, Datacenter
EFI Shell [Built-in]
DVD/Acpi (PNP0A03, 0)/Pci (1D|1)/Usb (0, 0)/Usb (1, 0)
Network/Acpi (PNP0A03, 0)/Pci (1E|0)/Pci (8|0)/Mac (000B5D6F801B)
Boot Option Maintenance Menu
Setup Menu

Use ^ and v to change option(s). Use Enter to select an option
```

### **3.6.6-3 Eject the Firmware CD**

**Eject the Firmware CD from the KVM DVD-ROM drive.  
Exit from the terminal software screen.**

## Preparation (Continued) \*\* Operation through Terminal Software \*\*

### <Connect to the console>

- 1) Set the Boot Selector mode with the Web-UI. (For details of this step, see "Preparation.")
- 2) <MMB operation> From the menu, select [Partition] --> [Console Redirection Switch]  
(In PRIMEQUEST 510A, [System] --> [Console Redirection] --> [Console Redirection Switch])  
to display the Console Redirection Switch page, and set [MMB] under "Connect to" for the partition.  
(When you have changed it, click <Apply>.)

System **Partition** User Administration Network Configuration Maintenance Logout

>Partition >Console Redirection Switch

Power Control  
Schedule  
USB/ATA/CD/DVD Switch  
**Console Redirection Switch**  
Partition Configuration  
Split Configuration  
Reserved SB Configuration  
Partition#0  
Partition#2  
Partition#3  
Partition#4  
Partition#6  
Partition#8  
Partition#10  
Partition#12  
Partition#14

### Console Redirection Switch

Select the destination of serial output, and then click the Apply button to take effect.

#	Partition Name	Status	Power Status	Connect to	Telnet/SSH	Port#
0	WinDev01	OK	Standby	<input checked="" type="radio"/> COM <input type="radio"/> MMB <input type="radio"/> None <input type="radio"/> Telnet <input type="radio"/> SSH		7000
1		None		<input checked="" type="radio"/> COM <input type="radio"/> MMB <input type="radio"/> None <input type="radio"/> Telnet <input type="radio"/> SSH		7001
2	NetCOBOL1	OK	On	<input checked="" type="radio"/> COM <input type="radio"/> MMB <input type="radio"/> None <input type="radio"/> Telnet <input type="radio"/> SSH		7002
3	ACM	OK	On	<input checked="" type="radio"/> COM <input type="radio"/> MMB <input type="radio"/> None <input type="radio"/> Telnet <input type="radio"/> SSH		7003
4	GDS-1	OK	On	<input checked="" type="radio"/> COM <input type="radio"/> MMB <input type="radio"/> None <input type="radio"/> Telnet <input type="radio"/> SSH		7004
5		None		<input checked="" type="radio"/> COM <input type="radio"/> MMB <input type="radio"/> None <input type="radio"/> Telnet <input type="radio"/> SSH		7005
6	IA3-SCSI	OK	Standby	<input checked="" type="radio"/> COM <input type="radio"/> MMB <input type="radio"/> None <input type="radio"/> Telnet <input type="radio"/> SSH		7006
7		None		<input checked="" type="radio"/> COM <input type="radio"/> MMB <input type="radio"/> None <input type="radio"/> Telnet <input type="radio"/> SSH		7007
8	MSCS1	OK	Standby	<input checked="" type="radio"/> COM <input type="radio"/> MMB <input type="radio"/> None <input type="radio"/> Telnet <input type="radio"/> SSH		7008
9		None		<input checked="" type="radio"/> COM <input type="radio"/> MMB <input type="radio"/> None <input type="radio"/> Telnet <input type="radio"/> SSH		7009
10	MSCS2	OK	Standby	<input checked="" type="radio"/> COM <input type="radio"/> MMB <input type="radio"/> None <input type="radio"/> Telnet <input type="radio"/> SSH		7010
11		None		<input checked="" type="radio"/> COM <input type="radio"/> MMB <input type="radio"/> None <input type="radio"/> Telnet <input type="radio"/> SSH		7011
12	IA3-Intel#0	OK	On	<input checked="" type="radio"/> COM <input type="radio"/> MMB <input type="radio"/> None <input type="radio"/> Telnet <input type="radio"/> SSH		7012
13		None		<input checked="" type="radio"/> COM <input type="radio"/> MMB <input type="radio"/> None <input type="radio"/> Telnet <input type="radio"/> SSH		7013
14	10GEth#1_181	OK	On	<input checked="" type="radio"/> COM <input type="radio"/> MMB <input type="radio"/> None <input type="radio"/> Telnet <input type="radio"/> SSH		7014
15		None		<input checked="" type="radio"/> COM <input type="radio"/> MMB <input type="radio"/> None <input type="radio"/> Telnet <input type="radio"/> SSH		7015

Apply Cancel

- 3) Start the terminal software.

When it connects with Telnet,

Set IP address : Set the virtual IP address of MMB

Set TCP port : Set the port number (7000~) for each partition

When it connects with SSH, specify SSH Version2 (SSH2).

Start a console by the above operation.

**login: CE account**

**Password: CE account password**

**Terminal size: 80x24**

### 3.6.7-1 Start the EFI shell

From the Boot Option Maintenance menu for EFI displayed in the terminal software window, select "EFI Shell [Built-in]," and press the [Enter] key.

"EFI Shell [Built-in]" selected in the terminal software window

```
EFI Boot Manager ver 1.10 [1.13]
```

```
Please select a boot option
```

```
Windows Server 2003, Datacenter
EFI Shell [Built-in]
DVD/ACPI(PNP0A03,0)/Pci(1D|1)/Usb(0, 0)/Usb(1, 0)
Network/ACPI(PNP0A03,0)/Pci(1E|0)/Pci(8|0)/Mac(000B5D6E01BF)
Boot Option Maintenance Menu
Setup Menu
```

```
Use ^ and v to change option(s). Use Enter to select an option
```

\* Screenshot of the window (The displayed menu varies depending on the user's settings.)

### 3.6.7-2 Confirm the file system (fs)

The next window displayed is as shown below.

Confirm the fsN value assigned to the Firmware CD (here, it is fs0).

```
Loading.: EFI Shell [Built-in]
```

```
EFI Shell version 1.10 [1.13]
```

```
Device mapping table
```

```
fs0 : ACPI(PNP0A03,0)/Pci(1D|1)/Usb(0, 0)/Usb(1, 0)/CDROM(Entry0)/HD(Part1,Signature00000000)
fs1 : ACPI(PNP0A03,0)/Pci(F|1)/Pci(0|2)/Pci(1|0)/Scsi(Pun0,Lun0)/HD(Part1,SignatureDEEFD988-C5E0-463F-BE91-14C2B48424BA)
blk0 : ACPI(PNP0A03,0)/Pci(1D|1)/Usb(0, 0)/Usb(1, 0)
blk1 : ACPI(PNP0A03,0)/Pci(1D|1)/Usb(0, 0)/Usb(1, 0)/CDROM(Entry0)
blk2 : ACPI(PNP0A03,0)/Pci(1D|1)/Usb(0, 0)/Usb(1, 0)/CDROM(Entry0)/HD(Part1,Signature00000000)
blk3 : ACPI(PNP0A03,0)/Pci(F|1)/Pci(0|2)/Pci(1|0)/Scsi(Pun0,Lun0)
blk4 : ACPI(PNP0A03,0)/Pci(F|1)/Pci(0|2)/Pci(1|0)/Scsi(Pun0,Lun0)/HD(Part1,SignatureDEEFD988-C5E0-463F-BE91-14C2B48424BA)
blk5 : ACPI(PNP0A03,0)/Pci(F|1)/Pci(0|2)/Pci(1|0)/Scsi(Pun0,Lun0)/HD(Part2,SignatureA8E787F6-F0AE-4EB7-9820-6A92F867C6D0)
blk6 : ACPI(PNP0A03,0)/Pci(F|1)/Pci(0|2)/Pci(1|0)/Scsi(Pun0,Lun0)/HD(Part3,SignatureDC040D9A-9AA1-48B4-93CB-5801C2146A65)
blk7 : ACPI(PNP0A03,0)/Pci(F|1)/Pci(0|2)/Pci(1|0)/Scsi(Pun0,Lun0)/HD(Part4,SignatureB0728977-81FA-42DF-811F-B67DBF89B9B2)
```

```
Shell>
```

```
Shell>
```

```
Shell>
```

```
Shell>
```

If the fs number of the CD is not found:

Enter the following command from the EFI shell to reconnect the device.

```
shell> reconnect -r[Enter]
```

Upon the return to the EFI shell screen, enter the following command to display the device map again, and confirm the fs number assigned to the CD:

```
shell> map -r[Enter]
```

### 3.6.7-3 Confirm the firmware CD

Move to the location indicated by the fs number assigned to the CD. Confirm that the CD is read normally by the ls command.

```
fs0:\> ls
Directory of: fs0:\

03/10/08 01:42a          4,224 README.ja_JP.EUC.txt
03/10/08 01:42a          4,350 README.ja_JP.SJIS.txt
03/10/08 01:42a          4,922 README.ja_JP.UTF-8.txt
03/10/08 01:42a          4,596 README.txt
03/24/08 03:54p <DIR>          2,048 PQ420
03/24/08 03:55p <DIR>          2,048 PQ480_440
03/24/08 03:55p <DIR>          2,048 PQ510A
03/24/08 03:56p <DIR>          2,048 PQ520
03/24/08 03:56p <DIR>          2,048 PQ520A_520M
03/24/08 03:57p <DIR>          2,048 PQ580_540
03/24/08 04:04p <DIR>          2,048 PQ580A_540A
          4 File(s)          18,092 bytes
          7 Dir(s)
```

```
fs0:\>
fs0:\>
fs0:\>
fs0:\>
fs0:\>
fs0:\>
```

## Tool Startup

### 3.6.8-1 Confirm the EFI driver number for the Fibre Channel device

```
fs0:\> drivers -b
=====
D  T  D
R  Y  C  I
V  P  F  A
V  VERSION  E  G  G  #D  #C  DRIVER NAME  IMAGE NAME
=====
00D 00000010 B - - 2 36 PCI Bus Driver PciBus
00F 00000010 D - - 1 - PC-AT ISA Device Enumeration Driver PcatIsaAcpi
010 00000010 B - - 1 2 ISA Bus Driver IsaBus
011 00000010 B - - 1 1 ISA Serial Driver IsaSerial
013 00000119 D - - 1 - ATI Rage XL UGA Driver XL_IPF_119.efi
014 00000010 D - - 1 - UGA Console Driver GraphicsConsole
015 00000010 D - - 3 - Usb Uhci Driver UsbUhci
016 00000010 B - - 1 1 Serial Terminal Driver Terminal
017 00000010 D - - 2 - Platform Console Management Driver ConPlatform
018 00000010 D - - 2 - Platform Console Management Driver ConPlatform
019 00000010 B - - 2 2 Console Splitter Driver ConSplitter
01A 00000010 B - - 1 1 Console Splitter Driver ConSplitter
01B 00000010 B - - 2 2 Console Splitter Driver ConSplitter
01C 00000010 B - - 2 2 Console Splitter Driver ConSplitter
020 00000010 B - - 3 6 USB Bus Driver UsbBus
021 00000010 D - - 1 - Usb Keyboard Driver UsbKeyboard
022 00031131 D X X 2 - Emulex SCSI Pass Thru Driver PciRom Seg=000000
035 00000010 D - - 1 - Generic USB Mass Storage Driver UsbMassStorage
=====
```

Confirm the numerical value NN at the beginning of the "Emulex SCSI Pass Thru Driver" line (here, it is 22).

#### Notes:

1. The value in the IMAGE NAME column varies depending on the EFI Driver version.
2. Even if "Emulex SCSI Pass Thru Driver" is displayed on multiple lines with different version numbers, confirm all of the numerical values NN at the beginning.

### 3.6.8-2 Delete the EFI driver

Delete all of the target EFI drivers with unload command.

```
fs0:\> unload 22
```

The number entered after "unload" is the numerical value confirmed in the step explained in Section 3.6.8-1.

```
fs0:\> unload 22
22: Image(PciRom Seg=00000000 Bus=CB Dev=01 Func=01 Image=0000) DriverBinding C
omponentName Configuration Diagnostics
Unload protocol image (y/n)? y
```

It asks "Unload protocol image (y/n)?". Delete it by inputting y and pushing Enter.  
If there are plural target EFI drivers, delete all of them with unload command.

### 3.6.8-3 Confirm after the EFI driver delete

Confirm the unloaded EFI driver is deleted.

```
019 00000010 B - - 2 2 Console Splitter Driver ConSplitter
01A 00000010 B - - 1 1 Console Splitter Driver ConSplitter
01B 00000010 B - - 2 2 Console Splitter Driver ConSplitter
01C 00000010 B - - 2 2 Console Splitter Driver ConSplitter
020 00000010 B - - 3 4 USB Bus Driver UsbBus
021 00000010 D - - 1 - Usb Keyboard Driver UsbKeyboard
022 02000600 D X X 2 - LSI Logic Fusion MPT SAS Driver PciRom Seg=000000
02D 00000010 D - - 1 - Generic USB Mass Storage Driver UsbMassStorage
Press ENTER to continue, 'q' to exit:
02E 00000010 D - - 1 - Usb Bot Mass Storage Driver UsbBot
02F 00000010 ? - - - - Usb Cbi1 Mass Storage Driver UsbCbi1
030 00000010 ? - - - - Usb Cbi0 Mass Storage Driver UsbCbi0
031 00000010 D - - 1 - Generic Disk I/O Driver DiskIo
032 00000010 ? - - - - Partition Driver(MBR/GPT/El Torito) Partition
033 00000010 ? - - - - FAT File System Driver Fat
034 00000010 B - - 1 1 Intel(R) PRO 100 UNDI Driver Undi
035 00000010 D - - 5 - Simple Network Protocol Driver Snp3264
036 00000010 D - - 5 - PXE Base Code Driver PxeBc
037 00000010 D - - 5 - PXE DHCPv4 Driver PxeDhcp4
038 00000010 D - - 1 - Usb Mouse Driver UsbMouse
03A 01050000 ? X X - - LSI Logic Fusion MPT Driver lsimptfw.efi
03E 00070700 B X X 4 4 Broadcom Gigabit Ethernet Driver b57undi64.efi
```

### 3.6.8-4 Add the EFI driver

Load the newly updated EFI driver with load command.

```
fs0:\> load \PQ580A 540A\Emulex_FC\EFI_tool\Elxcli400A1.efi
```

As for the directory of the EFI driver, refer to " Appendix Lists of the Folder Hierarchy on the Firmware CD".

\*An EFI driver is loaded as TOOL on PRIMEQUEST system, it is not set to FC card.  
Setting to FC card is performed in Section 3.6.9-1.

Confirm the EFI driver is loaded correctly by the following message being displayed.

```
fs0:\> load \PQ580A 540A\Emulex_FC\EFI_tool\Elxcli400A1.efi
load: Image fs0:\PQ580A 540A\Emulex_FC\EFI_tool\Elxcli400A1.efi loaded at 0x7F03
2000 - Success

fs0:\>
```

"0x7F032000" on the screen is a numerical value of an example.

### 3.6.8-5 Confirm after the EFI driver load

```
01A 00000010 B - - 1 1 Console Splitter Driver ConSplitter
01B 00000010 B - - 2 2 Console Splitter Driver ConSplitter
01C 00000010 B - - 2 2 Console Splitter Driver ConSplitter
020 00000010 B - - 3 5 USB Bus Driver UsbBus
021 00000010 D - - 1 - Usb Keyboard Driver UsbKeyboard
022 02000600 D X X 2 - LSI Logic Fusion MPT SAS Driver PeiRom Seg=000000
02D 00000010 D - - 2 - Generic USB Mass Storage Driver UsbMassStorage
Press ENTER to continue, 'q' to exit:
02E 00000010 D - - 2 - Usb Bot Mass Storage Driver UsbBot
02F 00000010 ? - - - - Usb Cbi1 Mass Storage Driver UsbCbi1
030 00000010 ? - - - - Usb Cbi0 Mass Storage Driver UsbCbi0
031 00000010 D - - 3 - Generic Disk I/O Driver DiskIo
032 00000010 B - - 1 1 Partition Driver(MBR/GPT/El Torito) Partition
033 00000010 D - - 1 - FAT File System Driver Fat
034 00000010 B - - 1 1 Intel(R) PRO 100 UNDI Driver Undi
035 00000010 D - - 5 - Simple Network Protocol Driver Snp3264
036 00000010 D - - 5 - PXE Base Code Driver PxeBc
037 00000010 D - - 5 - PXE DHCPv4 Driver PxeDhcp4
038 00000010 D - - 1 - Usb Mouse Driver UsbMouse
03A 01050000 ? X X - - LSI Logic Fusion MPT Driver lsimptfw.efi
03E 00070700 B X X 4 4 Broadcom Gigabit Ethernet Driver b57undi64.efi
0A1 00040011 D X X 2 - Emulex SCSI Pass Thru Driver elxcli400a1
```

Confirm the EFI driver(here, it is elxcli400a1.efi) which is loaded in Section 3.6.2-4 is added in "IMAGE NAME".

Confirm the numerical value NN at the beginning of the "Emulex SCSI Pass Thru Driver" line (here, it is A1).

\*Perform the following update operation after performing above EFI driver additional operation.  
If it is not performed, FC card may not run normally.

### 3.6.8-6 Enter the command for startup

```
fs0:\> drvcfg -S A1
```

The number entered after "-s" is the numerical value (NN) confirmed in the step explained in Section 3.6.8-5.

### 3.6.8-7 Confirm startup

Based on the window displayed for startup, such as shown below, confirm that the tool has started.

```
Emulex FC EFI-Bios Utility, Ver: 4.00A1

Emulex Adapters in this System: 001 thru 002
001: LPe11002-M4    PCIe  2.5Gb/s, x4  Seg#: 00 Bus#: 0C Dev#: 00 Func#: 00
002: LPe11002-M4    PCIe  2.5Gb/s, x4  Seg#: 00 Bus#: 0C Dev#: 00 Func#: 01

<<-/> to Display Prev/Next Page.
</v> to Select Options, <Enter> to Select Option, <ESC> to Exit.

Copyright (c) 2002-2007 Emulex. All rights reserved.
```

In the above screenshot, the system is equipped with one 4G (Dual Port) Fibre Channel adapter card.

Depending on the Fibre Channel adapter card equipped with, the card is displayed on two lines, with "Func#00" on the first (top) line and "Func#01" on the second (bottom) line.

## Update

### 3.6.9-1 Select the adapter to be updated

If the card is a Dual Port card, apply the update to every port (Func#: xx) displayed. Select the adapter with the up ( ↑ ) and down ( ↓ ) arrow keys, and press [Enter].

```
Emulex FC EFI-Bios Utility, Ver: 4.00A1

Emulex Adapters in this System: 001 thru 002
001: LPe11002-M4    PCIe  2.5Gb/s, x4  Seg#: 00 Bus#: 0C Dev#: 00 Func#: 00
002: LPe11002-M4    PCIe  2.5Gb/s, x4  Seg#: 00 Bus#: 0C Dev#: 00 Func#: 01

<<-/> to Display Prev/Next Page.
</v> to Select Options, <Enter> to Select Option, <ESC> to Exit.

Copyright (c) 2002-2007 Emulex. All rights reserved.
```

**Note:** Each page of the window displays lines for up to eight ports. To change the page for a system that has nine or more ports, use the right (<-->) and left (<-->) arrow keys.

### 3.6.9-2 Select "Firmware Update"

```
-----
Emulex FC EFI-Bios Utility, Ver: 4.00A1
-----
001: LPe11002-M4    PCIe  2.5Gb/s, x4  Seg#: 00 Bus#: 0C Dev#: 00 Func#: 00
      HBA Status: Ready      Boot Bios : Enabled
      EFI  Boot  : ZE3.11X1    Firmware  : ZS2.70A5
-----

      1. Setup Utility
      2. Firmware Update

-----
</v> to Select Options. <Enter> to Select Option. <ESC> to Prev Menu.
-----
Copyright (c) 2003-2007 Emulex. All rights reserved.
```

Select "2. Firmware Update" with the up (↑) and down (↓) arrow keys, and press [Enter]. The following screen is displayed.

```
-----
Emulex FC EFI-Bios Firmware Update Utility, Ver: 4.00A1
-----
001: LPe11002-M4    PCIe  2.5Gb/s, x4  Seg#: 00 Bus#: 0C Dev#: 00 Func#: 00
      HBA Status: Ready      Boot Bios : Enabled
      EFI  Boot  : ZE3.11X1    Firmware  : ZS2.70A5
-----

      1. Update Selected Adapter
      2. Batch Mode Update

-----
</v> to Select Options. <Enter> to Select Option. <ESC> to Prev Menu.
-----
Copyright (c) 2003-2007 Emulex. All rights reserved.
```

Select "1. Update Selected Adapter" with the up (↑) and down (↓) arrow keys, and press [Enter]. The following screen is displayed.

```
-----
Emulex FC EFI-Bios Firmware Update Utility, Ver: 4.00A1
-----
001: LPe11002-M4    PCIe  2.5Gb/s, x4  Seg#: 00 Bus#: 0C Dev#: 00 Func#: 00
      EFI  Boot  : **3.11X1    SLI - 2   : Z2F2.70A5
      Firmware : **2.70A5      SLI - 3   : Z3F2.70A5
      Port Name : 10000000C953BF96  Kernel   : 1.20A2
-----

      Directory Path      :

-----
Copyright (c) 2003-2007 Emulex. All rights reserved.
```

### 3.6.9-3 Confirm the version number before the update

Note: The first two characters in each version number vary depending on the adapter card. The characters are represented by "\*" in the following explanation.

**Confirm the version number on the "Firmware" or "EFI Boot" line before the update.**

**Number displayed at "Firmware" for confirmation: \*\*2.70A5 (in this example)**

**Number displayed at "EFI Boot" for confirmation: \*\*3.11X1 (in this example)**

### 3.6.9-4 Perform the update

Specify the directory path (fs\* is unnecessary), and press [Enter]. Specify the file name on the next line, and press [Enter].

If the specified path is incorrect, press [Enter] to go back to that line, and repeat this operation.

**For the folder hierarchy of each adapter card, see Appendix A, "Lists of the Folder Hierarchy on the Firmware CD."**

```
Emulex FC EFI-Bios Firmware Update Utility, Ver: 4.00A1
001: LPe11002-M4    PCIe  2.5Gb/s, x4  Seg#: 00 Bus#: 0C Dev#: 00 Func#: 00
      EFI Boot : ZE3.11X1      SLI - 2 : Z2F2.70A5
      Firmware : ZS2.70A5      SLI - 3 : Z3F2.70A5
      Port Name : 10000000C953BF96  Kernel : 1.20A2

      Directory Path : \P0580A_540A\Emulex_FC\MC08FC61\EFI_4_00A1
      Filename       : ZE400A1.PRG

Copyright (c) 2003-2007 Emulex. All rights reserved.
```

### <Update the EFI driver>

The following screen is displayed. The update is completed.

```
Emulex FC EFI-Bios Firmware Update Utility, Ver: 4.00A1
001: LPe11002-M4    PCIe  2.5Gb/s, x4  Seg#: 00 Bus#: 0C Dev#: 00 Func#: 00
      EFI Boot : ZE3.11X1      SLI - 2 : Z2F2.70A5
      Firmware : ZS2.70A5      SLI - 3 : Z3F2.70A5
      Port Name : 10000000C953BF96  Kernel : 1.20A2

      Directory Path : \P0580A_540A\Emulex_FC\MC08FC61\EFI_4_00A1
      Filename       : ZE400A1.PRG
      File Open      : Done.
      Validate Adapter : Done.
      Flash Erase     : Done.
      Flash Program   : Done.
      WakeUp Parameter : Updated.

      Press any Key to Return to Previous Menu ...

Copyright (c) 2003-2007 Emulex. All rights reserved.
```

\* Firmware update and EFI driver update are the same procedures.

Firmware and EFI driver are decided by the appointed "Directry Path" and "Filename".

### <Update the firmware>

The following window is displayed. The update is completed.

```
Emulex FC EFI-Bios Firmware Update Utility, Ver: 4.00A1
-----
001: LPe11002-M4      PCIe  2.5Gb/s, x4  Seg#: 00 Bus#: 0C Dev#: 00 Func#: 00
      EFI Boot : ZE3.11K1      SLI - 2  : Z2F2.70A5
      Firmware : ZS2.70A5      SLI - 3  : Z3F2.70A5
      Port Name : 10000000C953BF96  Kernel : 1.20A2
-----

Directory Path      : \P0580A_540A\Emulex_FC\M008FC51\Firm_2_80A4
Filename            : zf280a4.all
File Open           : Done.
Validate Adapter    : Done.
Flash Erase         : Done.
Flash Program       : Done.
WakeUp Parameter    : Updated.

Press any Key to Return to Previous Menu ...

Copyright (c) 2003-2007 Emulex. All rights reserved.
```

### 3.6.9-5 Complete the update procedure

Press any key to return to the window displayed for the step in Section 3.6.9-2.

```
Emulex FC EFI-Bios Firmware Update Utility, Ver: 4.00A1
-----
001: LPe11002-M4      PCIe  2.5Gb/s, x4  Seg#: 00 Bus#: 0C Dev#: 00 Func#: 00
      HBA Status: Ready        Boot Bios : Enabled
      EFI Boot  : ZE4.00A1      Firmware  : ZS2.80A4
-----

1. Update Selected Adapter
2. Batch Mode Update

<~/v> to Select Options, <Enter> to Select Option, <ESC> to Prev Menu.

Copyright (c) 2003-2007 Emulex. All rights reserved.
```

Press Esc key twice to return to the screen displayed for the step in Section 3.6.9-1.

```
Emulex FC EFI-Bios Utility, Ver: 4.00A1
-----

Emulex Adapters in this System: 001 thru 002
001: LPe11002-M4      PCIe  2.5Gb/s, x4  Seg#: 00 Bus#: 0C Dev#: 00 Func#: 00
002: LPe11002-M4      PCIe  2.5Gb/s, x4  Seg#: 00 Bus#: 0C Dev#: 00 Func#: 01

<</-> to Display Prev/Next Page.
<~/v> to Select Options, <Enter> to Select Option, <ESC> to Exit.

Copyright (c) 2003-2007 Emulex. All rights reserved.
```

## Confirmation

### 3.6.10-1 Select "Firmware Update"

```
Emulex FC EFI-Bios Utility, Ver: 4.00A1
-----
001: LPe11002-M4    PCIe  2.5Gb/s, x4  Seg#: 00 Bus#: 0C Dev#: 00 Func#: 00
      HBA Status: Ready      Boot Bios : Enabled
      EFI  Boot : ZE4.00A1    Firmware : ZS2.80A4
-----

1. Setup Utility
2. Firmware Update

<~/v> to Select Options, <Enter> to Select Option, <ESC> to Prev Menu.
Copyright (c) 2003-2007 Emulex. All rights reserved.
```

Select "2. Firmware Update" with the up ( ↑ ) and down ( ↓ ) arrow keys, and press [Enter]. The following screen is displayed.

```
Emulex FC EFI-Bios Firmware Update Utility, Ver: 4.00A1
-----
001: LPe11002-M4    PCIe  2.5Gb/s, x4  Seg#: 00 Bus#: 0C Dev#: 00 Func#: 00
      HBA Status: Ready      Boot Bios : Enabled
      EFI  Boot : ZE4.00A1    Firmware : ZS2.80A4
-----

1. Update Selected Adapter
2. Batch Mode Update

<~/v> to Select Options, <Enter> to Select Option, <ESC> to Prev Menu.
Copyright (c) 2003-2007 Emulex. All rights reserved.
```

Select "1. Update Selected Adapter" with the up ( ↑ ) and down ( ↓ ) arrow keys, and press [Enter]. The following screen is displayed.

```
Emulex FC EFI-Bios Firmware Update Utility, Ver: 4.00A1
-----
001: LPe11002-M4    PCIe  2.5Gb/s, x4  Seg#: 00 Bus#: 0C Dev#: 00 Func#: 00
      EFI  Boot : **4.00A1    SLI - 2 : Z2F2.80A4
      Firmware : **2.80A4    SLI - 3 : Z3F2.80A4
      Port Name : 10000000C953BF96  Kernel : 1.20A9
-----

Directory Path : █

Copyright (c) 2003-2007 Emulex. All rights reserved.
```

### 3.6.10-2 Confirm the version number after the update

Note: The first two characters in each version number vary depending on the adapter card. The characters are represented by "\*\*\*" in the following explanation. For details, see the rightmost column in the tables in Appendix A, "Lists of the Folder Hierarchy on the Firmware CD."

**Confirm the version number on the "Firmware" or "EFI Boot" line before the update.**

**Number displayed at "Firmware" for confirmation: \*\*2.80A4 (in this example)**

**Number displayed at "EFI Boot" for confirmation: \*\*4.00A1 (in this example)**

Upon completing confirmation of the final version number displayed for the update in the window, press [Enter] with "Directory Path" and "Filename" left blank. The following window is displayed.

```
Emulex FC EFI-Bios Firmware Update Utility, Ver: 4.00A1
-----
001: LPe11002-M4    PCIe  2.5Gb/s, x4  Seg#: 00 Bus#: 0C Dev#: 00 Func#: 00
      EFI Boot : ZE4.00A1      SLI - 2 : Z2F2.80A4
      Firmware : ZS2.80A4      SLI - 3 : Z3F2.80A4
      Port Name : 10000000C953BF96  Kernel : 1.20A9
-----

Directory Path      :
Filename           : No Filename Entered.

Press any Key to Return to Previous Menu ...

Copyright (c) 2003-2007 Emulex. All rights reserved.
```

\*Confirm the Firmware version is displayed on SLI2 and SLI3.  
If it is not displayed, the system may not run normally.

Press any key to return to the window displayed for the following it.

```
Emulex FC EFI-Bios Firmware Update Utility, Ver: 4.00A1
-----
001: LPe11002-M4    PCIe  2.5Gb/s, x4  Seg#: 00 Bus#: 0C Dev#: 00 Func#: 00
      HBA Status: Ready      Boot Bios : Enabled
      EFI Boot : ZE4.00A1      Firmware : ZS2.80A4
-----

1. Update Selected Adapter
2. Batch Mode Update

<~/v> to Select Options. <Enter> to Select Option. <ESC> to Prev Menu.

Copyright (c) 2003-2007 Emulex. All rights reserved.
```

Press Esc key twice to return to the screen displayed for the step in Section 3.6.9-1.

```
Emulex FC EFI-Bios Utility, Ver: 4.00A1

-----

Emulex Adapters in this System: 001 thru 002

001: LPe11002-M4    PCIe  2.5Gb/s, x4  Seg#: 00 Bus#: 0C Dev#: 00 Func#: 00
002: LPe11002-M4    PCIe  2.5Gb/s, x4  Seg#: 00 Bus#: 0C Dev#: 00 Func#: 01

<<-/->> to Display Prev/Next Page.
<~/v> to Select Options, <Enter> to Select Option, <ESC> to Exit.

-----

Copyright (c) 2003-2007 Emulex. All rights reserved.
```

### Updating another adapter

Note: If the card is a Dual Port card, perform an update for the other port.

### 3.6.11 Updating another adapter

Press the [Esc] key to return to the window displayed for the step in Section 3.6.9-1.

```
Emulex FC EFI-Bios Utility, Ver: 4.00A1

-----

Emulex Adapters in this System: 001 thru 002

001: LPe11002-M4    PCIe  2.5Gb/s, x4  Seg#: 00 Bus#: 0C Dev#: 00 Func#: 00
002: LPe11002-M4    PCIe  2.5Gb/s, x4  Seg#: 00 Bus#: 0C Dev#: 00 Func#: 01

<<-/->> to Display Prev/Next Page.
<~/v> to Select Options, <Enter> to Select Option, <ESC> to Exit.

-----

Copyright (c) 2003-2007 Emulex. All rights reserved.
```

If adapters to be updated remain, select it with the up ( ↑ ) and down ( ↓ ) arrow keys, and press [Enter].

```
Emulex FC EFI-Bios Utility, Ver: 4.00A1

-----

Emulex Adapters in this System: 001 thru 002

001: LPe11002-M4    PCIe  2.5Gb/s, x4  Seg#: 00 Bus#: 0C Dev#: 00 Func#: 00
002: LPe11002-M4    PCIe  2.5Gb/s, x4  Seg#: 00 Bus#: 0C Dev#: 00 Func#: 01

<<-/->> to Display Prev/Next Page.
<~/v> to Select Options, <Enter> to Select Option, <ESC> to Exit.

-----

Copyright (c) 2003-2007 Emulex. All rights reserved.
```

The window returns to that displayed for the step in Section 3.6.9-2.

## Exiting the EFI Shell

### 3.6.12-1 Exit the tool

Press [Enter] with "Directory Path" and "Filename" left blank.

The following window is displayed.

```
-----
Emulex FC EFI-Bios Firmware Update Utility, Ver: 4.00A1
-----
001: LPe11002-M4    PCIe  2.5Gb/s, x4  Seg#: 00 Bus#: 0C Dev#: 00 Func#: 00
      EFI Boot : ZE4.00A1      SLI - 2  : Z3F2.80A4
      Firmware : ZS2.80A4      SLI - 3  : Z3F2.80A4
      Port Name : 10000000C953BF96  Kernel : 1.20A9
-----

Directory Path      :
Filename            : No Filename Entered,

Press any Key to Return to Previous Menu ...
-----
Copyright (c) 2003-2007 Emulex. All rights reserved.
```

Press any key to return to the window displayed for the following it.

```
-----
Emulex FC EFI-Bios Firmware Update Utility, Ver: 4.00A1
-----
001: LPe11002-M4    PCIe  2.5Gb/s, x4  Seg#: 00 Bus#: 0C Dev#: 00 Func#: 00
      HBA Status: Ready        Boot Bios : Enabled
      EFI Boot  : ZE4.00A1      Firmware  : ZS2.80A4
-----

1. Update Selected Adapter
2. Batch Mode Update

<~/v> to Select Options. <Enter> to Select Option. <ESC> to Prev Menu.
-----
Copyright (c) 2003-2007 Emulex. All rights reserved.
```

Press Esc key twice to return to the screen displayed for the step in Section 3.6.9-1.

```
-----
Emulex FC EFI-Bios Utility, Ver: 4.00A1
-----

Emulex Adapters in this System: 001 thru 002

001: LPe11002-M4    PCIe  2.5Gb/s, x4  Seg#: 00 Bus#: 0C Dev#: 00 Func#: 00
002: LPe11002-M4    PCIe  2.5Gb/s, x4  Seg#: 00 Bus#: 0C Dev#: 00 Func#: 01

<<-/->> to Display Prev/Next Page.
<~/v> to Select Options. <Enter> to Select Option. <ESC> to Exit.
-----
Copyright (c) 2003-2007 Emulex. All rights reserved.
```

Press the [Esc] key again to return to the EFI shell (exiting the tool).

```
Drv[9A] Ctrl[ALL] Lang[eng] - Options set. Action Required is None
None
fs0:\>
```

### 3.6.12-2 Enter "exit" in the EFI shell

Enter "exit" in the EFI shell to return to the EFI Boot Manager window (the following window).

EFI Boot Manager ver 1.10 [1.13]

Please select a boot option

```
Windows Server 2003, Datacenter
EFI Shell [Built-in]
DVD/Acpi(PNP0A03,0)/Pci(1D|1)/Usb(0, 0)/Usb(1, 0)
Network/Acpi(PNP0A03,0)/Pci(1E|0)/Pci(8|0)/Mac(000B5D6E01BF)
Boot Option Maintenance Menu
Setup Menu
```

Use ^ and v to change option(s). Use Enter to select an option.

### 3.6.12-3 Eject the Firmware CD

Eject the Firmware CD from the KVM DVD-ROM drive.

Exit the terminal software, closing its window.

## Terminating the Web-UI Connection

### 3.6.13 Setting "Power Off" for the partition

1) For the partition that was set to "Power On" for the Fibre Channel card firmware update, set "Power Off." [Part 1]

On the Partition > Power Control page (System > Power Control page in PRIMEQUEST 510A), set [Power Off] under "Power Control" for the partition, and click <Apply>.

System **Partition** Switch User Administration Network Configuration Maintenance Logout

>Partition >Power Control

Power Control

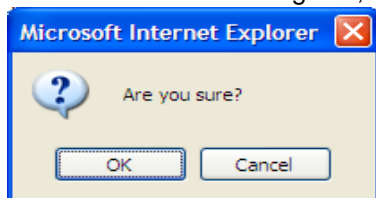
Select a Power Control option for one or more partitions, then click the Apply button to take effect.

#	Partition Name	Status	Power Status	System Progress	Power Control	Force Power Off Delay
0	Partition#0	OK	On	OS Running	(Not specified)	<input type="checkbox"/> <input type="checkbox"/> min
2	Partition#2	OK	Standby	Power Off	(Not specified)	<input type="checkbox"/> <input type="checkbox"/> min
3	Partition#3	OK	Standby	Power Off	(Not specified)	<input type="checkbox"/> <input type="checkbox"/> min
4	Partition#4	OK	Standby	Power Off	(Not specified)	<input type="checkbox"/> <input type="checkbox"/> min
6	Partition#6	OK	On	OS Running	(Not specified)	<input type="checkbox"/> <input type="checkbox"/> min
8	Partition#8	OK	On	OS Running	(Not specified)	<input type="checkbox"/> <input type="checkbox"/> min
10	Partition#10	OK	Standby	Power Off	(Not specified)	<input type="checkbox"/> <input type="checkbox"/> min
12	Partition#12	OK	On	POST 1094h	Power Off	<input type="checkbox"/> <input type="checkbox"/> min
14	Partition#14	OK	On	OS Running	(Not specified)	<input type="checkbox"/> <input type="checkbox"/> min

Apply Cancel

Partition > Power Control page ("Power Off" set)

In the confirmation dialog box, click <OK>.



- 2) For the partition that was set to "Power On" for the Fibre Channel card firmware update, set "Power Off." [Part 2]  
Confirm that the partition has "Power Off In Progress" displayed in the System Progress column after "Power Off" is set.

System | Partition | Switch | User Administration | Network Configuration | Maintenance Logout  
>Partition >Power Control

Power Control Refresh Help

Select a Power Control option for one or more partitions, then click the Apply button to take effect.

#	Partition Name	Status	Power Status	System Progress	Power Control	Force Power Off Delay
0	Partition#0	OK	On	OS Running	(Not specified)	min
2	Partition#2	OK	Standby	Power Off	(Not specified)	min
3	Partition#3	OK	Standby	Power Off	(Not specified)	min
4	Partition#4	OK	Standby	Power Off	(Not specified)	min
6	Partition#6	OK	On	OS Running	(Not specified)	min
8	Partition#8	OK	On	OS Running	(Not specified)	min
10	Partition#10	OK	Standby	Power Off	(Not specified)	min
12	Partition#12	OK	On	Power Off In Progress	(Not specified)	min
14	Partition#14	OK	On	OS Running	(Not specified)	min

Apply Cancel

Partition > Power Control page ("Power Off" operation started)

- 3) For the partition that was set to "Power On" for the Fibre Channel card firmware update, set "Power Off." [Part 3]  
Confirm that the partition has "Power Off" displayed finally in the System Progress column after "Power Off" is set.

System | Partition | Switch | User Administration | Network Configuration | Maintenance Logout  
>Partition >Power Control

Power Control Refresh Help

Select a Power Control option for one or more partitions, then click the Apply button to take effect.

#	Partition Name	Status	Power Status	System Progress	Power Control	Force Power Off Delay
0	Partition#0	OK	On	OS Running	(Not specified)	min
2	Partition#2	OK	Standby	Power Off	(Not specified)	min
3	Partition#3	OK	Standby	Power Off	(Not specified)	min
4	Partition#4	OK	Standby	Power Off	(Not specified)	min
6	Partition#6	OK	On	OS Running	(Not specified)	min
8	Partition#8	OK	On	OS Running	(Not specified)	min
10	Partition#10	OK	Standby	Power Off	(Not specified)	min
12	Partition#12	OK	Standby	Power Off	(Not specified)	min
14	Partition#14	OK	On	OS Running	(Not specified)	min

Apply Cancel

Partition > Power Control page ("Power Off" operation completed)

4) Restore the DVD setting.

On the Partition > USB/Video/DVD Switch page, restore the USB/Video/DVD Switch setting, and click <Apply>.

(In PRIMEQUEST 510A, this procedure is unnecessary.)

System | Partition | Switch | User Administration | Network Configuration | Maintenance | Logout

>Partition >USB/Video/DVD Switch

☐ Power Control  
☐ Schedule  
☒ USB/Video/DVD Switch  
☐ Console Redirection Switch  
☐ Partition Configuration  
☐ Split Configuration  
☐ Reserved SB Configuration  
☐ Partition#0  
☐ Partition#2  
☐ Partition#3  
☐ Partition#4  
☐ Partition#6  
☐ Partition#8  
☐ Partition#10  
☐ Partition#12  
☐ Partition#14

### USB/Video/DVD Switch

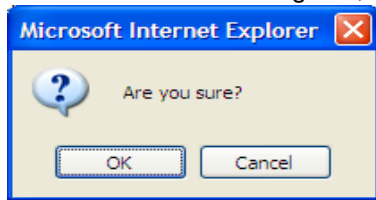
Select partition to connect USB, Video, or DVD respectively, then click the Apply button to take effect.

#	Partition Name	Status	Power Status	USB	Video	DVD
0	Partition#0	OK	On	<input type="radio"/>	<input type="radio"/>	<input type="radio"/>
2	Partition#2	OK	Standby	<input type="radio"/>	<input type="radio"/>	<input type="radio"/>
3	Partition#3	OK	Standby	<input type="radio"/>	<input type="radio"/>	<input type="radio"/>
4	Partition#4	OK	Standby	<input type="radio"/>	<input type="radio"/>	<input type="radio"/>
6	Partition#6	OK	On	<input type="radio"/>	<input type="radio"/>	<input type="radio"/>
8	Partition#8	OK	On	<input type="radio"/>	<input type="radio"/>	<input type="radio"/>
10	Partition#10	OK	Standby	<input type="radio"/>	<input type="radio"/>	<input type="radio"/>
12	Partition#12	OK	Standby	<input type="radio"/>	<input type="radio"/>	<input type="radio"/>
14	Partition#14	OK	On	<input type="radio"/>	<input type="radio"/>	<input type="radio"/>
Free				<input checked="" type="radio"/>	<input checked="" type="radio"/>	<input checked="" type="radio"/>

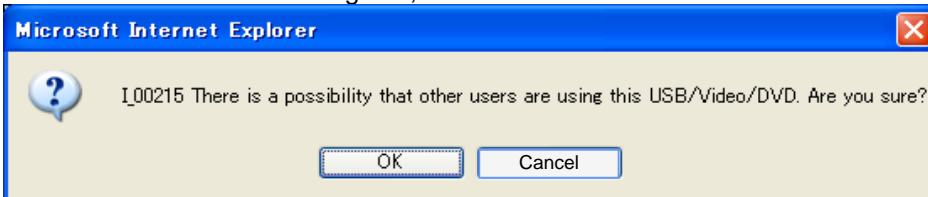
Apply Cancel

Partition > USB/Video/DVD Switch page (DVD switch selection)

In the confirmation dialog box, click <OK>.



In another confirmation dialog box, click <OK>.



In the completion dialog box, click <OK>.



Appendix Lists of the Folder Hierarchy on the Firmware CD

[PQ420]

Model name	Specification	Number displayed on screen	Firmware/EFI driver	Directry Path	Filename	Confirmation of version number
MC-08FC11	Delivery No.:CA06657-E301 Maintenance No.:CA05950-0966	LP10000	EFI tool	\\PQ420\\Emulex_FC\\EFI_tool	Elxcli400A1.efi	
			Firmware	1.91A5 \\PQ420\\Emulex_FC\\MC08FC11\\Firm_1.91A5	td191a5.all	TS1.91A5
				1.92A1 \\PQ420\\Emulex_FC\\MC08FC11\\Firm_1.92A1	td192a1.all	TS1.92A1
			EFI driver	3.11X1 \\PQ420\\Emulex_FC\\MC08FC11\\EFI_3.11X1	TE311X1.PRQ	TE3.11X1
MC-08FC71	Delivery No.:CA06657-E311 Maintenance No.:CA05950-1020	LP10000	EFI tool	\\PQ420\\Emulex_FC\\EFI_tool	Elxcli400A1.efi	
			Firmware	1.91A5 \\PQ420\\Emulex_FC\\MC08FC71\\Firm_1.91A5	td191a5.all	TS1.91A5
				1.92A1 \\PQ420\\Emulex_FC\\MC08FC71\\Firm_1.92A1	td192a1.all	TS1.92A1
			EFI driver	3.11X1 \\PQ420\\Emulex_FC\\MC08FC71\\EFI_3.11X1	TE311X1.PRQ	TE3.11X1
MC-08FC31	Delivery No.:CA06657-E303 Maintenance No.:CA05951-9610	LP11000	EFI tool	\\PQ420\\Emulex_FC\\EFI_tool	Elxcli400A1.efi	
			Firmware	2.70A5 \\PQ420\\Emulex_FC\\MC08FC31\\Firm_2.70A5	bd270a5.all	BS2.70A5
				2.80A4 \\PQ420\\Emulex_FC\\MC08FC31\\Firm_2.80A4	bd280a4.all	BS2.80A4
			EFI driver	3.11X1 \\PQ420\\Emulex_FC\\MC08FC31\\EFI_3.11X1	BE311X1.PRQ	BE3.11X1
MC-08FC41	Delivery No.:CA06657-E304 Maintenance No.:CA05951-9611	LP11002	EFI tool	\\PQ420\\Emulex_FC\\EFI_tool	Elxcli400A1.efi	
			Firmware	2.70A5 \\PQ420\\Emulex_FC\\MC08FC41\\Firm_2.70A5	bd270a5.all	BS2.70A5
				2.80A4 \\PQ420\\Emulex_FC\\MC08FC41\\Firm_2.80A4	bd280a4.all	BS2.80A4
			EFI driver	3.11X1 \\PQ420\\Emulex_FC\\MC08FC41\\EFI_3.11X1	BE311X1.PRQ	BE3.11X1
MC-08FC51	Delivery No.:CA06657-E305 Maintenance No.:CA05951-9612	LPe11000	EFI tool	\\PQ420\\Emulex_FC\\EFI_tool	Elxcli400A1.efi	
			Firmware	2.70A5 \\PQ420\\Emulex_FC\\MC08FC51\\Firm_2.70A5	zd270a5.all	ZS2.70A5
				2.80A4 \\PQ420\\Emulex_FC\\MC08FC51\\Firm_2.80A4	zd280a4.all	ZS2.80A4
			EFI driver	3.11X1 \\PQ420\\Emulex_FC\\MC08FC51\\EFI_3.11X1	ZE311X1.PRQ	ZE3.11X1
MC-08FC61	Delivery No.:CA06657-E306 Maintenance No.:CA05951-9613	LPe11002	EFI tool	\\PQ420\\Emulex_FC\\EFI_tool	Elxcli400A1.efi	
			Firmware	2.70A5 \\PQ420\\Emulex_FC\\MC08FC61\\Firm_2.70A5	zd270a5.all	ZS2.70A5
				2.80A4 \\PQ420\\Emulex_FC\\MC08FC61\\Firm_2.80A4	zd280a4.all	ZS2.80A4
			EFI driver	3.11X1 \\PQ420\\Emulex_FC\\MC08FC61\\EFI_3.11X1	ZE311X1.PRQ	ZE3.11X1
				4.00A1 \\PQ420\\Emulex_FC\\MC08FC61\\EFI_4.00A1	ZE400A1.PRQ	ZE4.00A1

[PQ480/440]

Model name	Specification	Number displayed on screen	Firmware/EFI driver	Directry Path	Filename	Confirmation of version number
MC-08FC11	Delivery No.:CA06657-E301 Maintenance No.:CA05950-0966	LP10000	EFI tool	\\PQ480_440\\Emulex_FC\\EFI_tool	Elxcli400A1.efi	
			Firmware	1.91A5 \\PQ480_440\\Emulex_FC\\MC08FC11\\Firm_1.91A5	td191a5.all	TS1.91A5
				1.92A1 \\PQ480_440\\Emulex_FC\\MC08FC11\\Firm_1.92A1	td192a1.all	TS1.92A1
			EFI driver	3.11X1 \\PQ480_440\\Emulex_FC\\MC08FC11\\EFI_3.11X1	TE311X1.PRQ	TE3.11X1
MC-08FC71	Delivery No.:CA06657-E311 Maintenance No.:CA05950-1020	LP10000	EFI tool	\\PQ480_440\\Emulex_FC\\EFI_tool	Elxcli400A1.efi	
			Firmware	1.91A5 \\PQ480_440\\Emulex_FC\\MC08FC71\\Firm_1.91A5	td191a5.all	TS1.91A5
				1.92A1 \\PQ480_440\\Emulex_FC\\MC08FC71\\Firm_1.92A1	td192a1.all	TS1.92A1
			EFI driver	3.11X1 \\PQ480_440\\Emulex_FC\\MC08FC71\\EFI_3.11X1	TE311X1.PRQ	TE3.11X1
MC-08FC31	Delivery No.:CA06657-E303 Maintenance No.:CA05951-9610	LP11000	EFI tool	\\PQ480_440\\Emulex_FC\\EFI_tool	Elxcli400A1.efi	
			Firmware	2.70A5 \\PQ480_440\\Emulex_FC\\MC08FC31\\Firm_2.70A5	bd270a5.all	BS2.70A5
				2.80A4 \\PQ480_440\\Emulex_FC\\MC08FC31\\Firm_2.80A4	bd280a4.all	BS2.80A4
			EFI driver	3.11X1 \\PQ480_440\\Emulex_FC\\MC08FC31\\EFI_3.11X1	BE311X1.PRQ	BE3.11X1
MC-08FC41	Delivery No.:CA06657-E304 Maintenance No.:CA05951-9611	LP11002	EFI tool	\\PQ480_440\\Emulex_FC\\EFI_tool	Elxcli400A1.efi	
			Firmware	2.70A5 \\PQ480_440\\Emulex_FC\\MC08FC41\\Firm_2.70A5	bd270a5.all	BS2.70A5
				2.80A4 \\PQ480_440\\Emulex_FC\\MC08FC41\\Firm_2.80A4	bd280a4.all	BS2.80A4
			EFI driver	3.11X1 \\PQ480_440\\Emulex_FC\\MC08FC41\\EFI_3.11X1	BE311X1.PRQ	BE3.11X1
				4.00A1 \\PQ480_440\\Emulex_FC\\MC08FC41\\EFI_4.00A1	BE400A1.PRQ	BE4.00A1

[PQ520]

Model name	Specification	Number displayed on screen	Firmware/EFI driver	Directry Path	Filename	Confirmation of version number
MC-08FC71	Delivery No.:CA06657-E311 Maintenance No.:CA05950-1020	LP10000	EFI tool	VPQ520\Emulex_FC\EFI_tool	Elxcli400A1.efi	
			Firmware	1.91A5 VPQ520\Emulex_FC\MC08FC71\Firm_1.91A5	td191a5.all	TS1.91A5
				1.92A1 VPQ520\Emulex_FC\MC08FC71\Firm_1.92A1	td192a1.all	TS1.92A1
			EFI driver	3.11X1 VPQ520\Emulex_FC\MC08FC71\EFI_3.11X1	TE311X1.PR	TE3.11X1
MC-08FC31	Delivery No.:CA06657-E303 Maintenance No.:CA05951-9610	LP11000	EFI tool	VPQ520\Emulex_FC\EFI_tool	Elxcli400A1.efi	
			Firmware	2.70A5 VPQ520\Emulex_FC\MC08FC31\Firm_2.70A5	bd270a5.all	BS2.70A5
				2.80A4 VPQ520\Emulex_FC\MC08FC31\Firm_2.80A4	bd280a4.all	BS2.80A4
			EFI driver	3.11X1 VPQ520\Emulex_FC\MC08FC31\EFI_3.11X1	BE311X1.PR	BE3.11X1
MC-08FC41	Delivery No.:CA06657-E304 Maintenance No.:CA05951-9611	LP11002	EFI tool	VPQ520\Emulex_FC\EFI_tool	Elxcli400A1.efi	
			Firmware	2.70A5 VPQ520\Emulex_FC\MC08FC41\Firm_2.70A5	bf270a5.all	BS2.70A5
				2.80A4 VPQ520\Emulex_FC\MC08FC41\Firm_2.80A4	bf280a4.all	BS2.80A4
			EFI driver	3.11X1 VPQ520\Emulex_FC\MC08FC41\EFI_3.11X1	BE311X1.PR	BE3.11X1
MC-08FC51	Delivery No.:CA06657-E305 Maintenance No.:CA05951-9612	LPe11000	EFI tool	VPQ520\Emulex_FC\EFI_tool	Elxcli400A1.efi	
			Firmware	2.70A5 VPQ520\Emulex_FC\MC08FC51\Firm_2.70A5	zd270a5.all	ZS2.70A5
				2.80A4 VPQ520\Emulex_FC\MC08FC51\Firm_2.80A4	zd280a4.all	ZS2.80A4
			EFI driver	3.11X1 VPQ520\Emulex_FC\MC08FC51\EFI_3.11X1	ZE311X1.PR	ZE3.11X1
MC-08FC61	Delivery No.:CA06657-E306 Maintenance No.:CA05951-9613	LPe11002	EFI tool	VPQ520\Emulex_FC\EFI_tool	Elxcli400A1.efi	
			Firmware	2.70A5 VPQ520\Emulex_FC\MC08FC61\Firm_2.70A5	zf270a5.all	ZS2.70A5
				2.80A4 VPQ520\Emulex_FC\MC08FC61\Firm_2.80A4	zf280a4.all	ZS2.80A4
			EFI driver	3.11X1 VPQ520\Emulex_FC\MC08FC61\EFI_3.11X1	ZE311X1.PR	ZE3.11X1

[PQ580/540]

Model name	Specification	Number displayed on screen	Firmware/EFI driver	Directry Path	Filename	Confirmation of version number
MC-08FC71	Delivery No.:CA06657-E311 Maintenance No.:CA05950-1020	LP10000	EFI tool	VPQ580_540\Emulex_FC\EFI_tool	Elxcli400A1.efi	
			Firmware	1.91A5 VPQ580_540\Emulex_FC\MC08FC71\Firm_1.91A5	td191a5.all	TS1.91A5
				1.92A1 VPQ580_540\Emulex_FC\MC08FC71\Firm_1.92A1	td192a1.all	TS1.92A1
			EFI driver	3.11X1 VPQ580_540\Emulex_FC\MC08FC71\EFI_3.11X1	TE311X1.PR	TE3.11X1
MC-08FC31	Delivery No.:CA06657-E303 Maintenance No.:CA05951-9610	LP11000	EFI tool	VPQ580_540\Emulex_FC\EFI_tool	Elxcli400A1.efi	
			Firmware	2.70A5 VPQ580_540\Emulex_FC\MC08FC31\Firm_2.70A5	bd270a5.all	BS2.70A5
				2.80A4 VPQ580_540\Emulex_FC\MC08FC31\Firm_2.80A4	bd280a4.all	BS2.80A4
			EFI driver	3.11X1 VPQ580_540\Emulex_FC\MC08FC31\EFI_3.11X1	BE311X1.PR	BE3.11X1
MC-08FC41	Delivery No.:CA06657-E304 Maintenance No.:CA05951-9611	LP11002	EFI tool	VPQ580_540\Emulex_FC\EFI_tool	Elxcli400A1.efi	
			Firmware	2.70A5 VPQ580_540\Emulex_FC\MC08FC41\Firm_2.70A5	bf270a5.all	BS2.70A5
				2.80A4 VPQ580_540\Emulex_FC\MC08FC41\Firm_2.80A4	bf280a4.all	BS2.80A4
			EFI driver	3.11X1 VPQ580_540\Emulex_FC\MC08FC41\EFI_3.11X1	BE311X1.PR	BE3.11X1
MC-08FC51	Delivery No.:CA06657-E305 Maintenance No.:CA05951-9612	LPe11000	EFI tool	VPQ580_540\Emulex_FC\EFI_tool	Elxcli400A1.efi	
			Firmware	2.70A5 VPQ580_540\Emulex_FC\MC08FC51\Firm_2.70A5	zd270a5.all	ZS2.70A5
				2.80A4 VPQ580_540\Emulex_FC\MC08FC51\Firm_2.80A4	zd280a4.all	ZS2.80A4
			EFI driver	3.11X1 VPQ580_540\Emulex_FC\MC08FC51\EFI_3.11X1	ZE311X1.PR	ZE3.11X1
MC-08FC61	Delivery No.:CA06657-E306 Maintenance No.:CA05951-9613	LPe11002	EFI tool	VPQ580_540\Emulex_FC\EFI_tool	Elxcli400A1.efi	
			Firmware	2.70A5 VPQ580_540\Emulex_FC\MC08FC61\Firm_2.70A5	zf270a5.all	ZS2.70A5
				2.80A4 VPQ580_540\Emulex_FC\MC08FC61\Firm_2.80A4	zf280a4.all	ZS2.80A4
			EFI driver	3.11X1 VPQ580_540\Emulex_FC\MC08FC61\EFI_3.11X1	ZE311X1.PR	ZE3.11X1

[PQ520A/520X]

Model name	Specification	Number displayed on screen	Firmware/EFI driver	Directry Path	Filename	Confirmation of version number
MC-08FC71	Delivery No.:CA06657-E311 Maintenance No.:CA05950-1020	LP10000	EFI tool	VPQ520A_520X\Emulex_FC\EFI_tool	Elxcli400A1.efi	
			Firmware	1.91A5 VPQ520A_520X\Emulex_FC\MC08FC71\Firm_1.91A5	td191a5.all	TS1.91A5
				1.92A1 VPQ520A_520X\Emulex_FC\MC08FC71\Firm_1.92A1	td192a1.all	TS1.92A1
			EFI driver	3.11X1 VPQ520A_520X\Emulex_FC\MC08FC71\EFI_3.11X1	TE311X1.PRGR	TE3.11X1
MC-08FC31	Delivery No.:CA06657-E303 Maintenance No.:CA05951-9610	LP11000	EFI tool	VPQ520A_520X\Emulex_FC\EFI_tool	Elxcli400A1.efi	
			Firmware	2.70A5 VPQ520A_520X\Emulex_FC\MC08FC31\Firm_2.70A5	bd270a5.all	BS2.70A5
				2.80A4 VPQ520A_520X\Emulex_FC\MC08FC31\Firm_2.80A4	bd280a4.all	BS2.80A4
			EFI driver	3.11X1 VPQ520A_520X\Emulex_FC\MC08FC31\EFI_3.11X1	BE311X1.PRGR	BE3.11X1
MC-08FC41	Delivery No.:CA06657-E304 Maintenance No.:CA05951-9611	LP11002	EFI tool	VPQ520A_520X\Emulex_FC\EFI_tool	Elxcli400A1.efi	
			Firmware	2.70A5 VPQ520A_520X\Emulex_FC\MC08FC41\Firm_2.70A5	bf270a5.all	BS2.70A5
				2.80A4 VPQ520A_520X\Emulex_FC\MC08FC41\Firm_2.80A4	bf280a4.all	BS2.80A4
			EFI driver	3.11X1 VPQ520A_520X\Emulex_FC\MC08FC41\EFI_3.11X1	BE311X1.PRGR	BE3.11X1
MC-08FC51	Delivery No.:CA06657-E305 Maintenance No.:CA05951-9612	LPe11000	EFI tool	VPQ520A_520X\Emulex_FC\EFI_tool	Elxcli400A1.efi	
			Firmware	2.70A5 VPQ520A_520X\Emulex_FC\MC08FC51\Firm_2.70A5	zd270a5.all	ZS2.70A5
				2.80A4 VPQ520A_520X\Emulex_FC\MC08FC51\Firm_2.80A4	zd280a4.all	ZS2.80A4
			EFI driver	3.11X1 VPQ520A_520X\Emulex_FC\MC08FC51\EFI_3.11X1	ZE311X1.PRGR	ZE3.11X1
MC-08FC61	Delivery No.:CA06657-E306 Maintenance No.:CA05951-9613	LPe11002	EFI tool	VPQ520A_520X\Emulex_FC\EFI_tool	Elxcli400A1.efi	
			Firmware	2.70A5 VPQ520A_520X\Emulex_FC\MC08FC61\Firm_2.70A5	zf270a5.all	ZS2.70A5
				2.80A4 VPQ520A_520X\Emulex_FC\MC08FC61\Firm_2.80A4	zf280a4.all	ZS2.80A4
			EFI driver	3.11X1 VPQ520A_520X\Emulex_FC\MC08FC61\EFI_3.11X1	ZE311X1.PRGR	ZE3.11X1
MC-08FC81	Delivery No.:CA06657-E321 Maintenance No.:CA05954-1010	LPe1250	EFI tool	VPQ520A_520X\Emulex_FC\EFI_tool	Elxcli400A1.efi	
			Firmware	1.11A5 VPQ520A_520X\Emulex_FC\MC08FC81\Firm_1.11A5	of111a5.all	OS1.11A5
			EFI driver	4.00A1 VPQ520A_520X\Emulex_FC\MC08FC81\EFI_4.00A1	OE400A1.PRGR	OE4.00A1
MC-08FC91	Delivery No.:CA06657-E322 Maintenance No.:CA05954-1011	LPe12002	EFI tool	VPQ520A_520X\Emulex_FC\EFI_tool	Elxcli400A1.efi	
			Firmware	1.11A5 VPQ520A_520X\Emulex_FC\MC08FC91\Firm_1.11A5	ud111a5.all	US1.11A5
			EFI driver	4.00A1 VPQ520A_520X\Emulex_FC\MC08FC91\EFI_4.00A1	UE400A1.PRGR	UE4.00A1

[PQ580A/540A]

Model name	Specification	Number displayed on screen	Firmware/EFI driver	Directry Path	Filename	Confirmation of version number
MC-08FC71	Delivery No.:CA06657-E311 Maintenance No.:CA05950-1020	LP10000	EFI tool	VPQ580A_540A\Emulex_FC\EFI_tool	Elxcli400A1.efi	
			Firmware	1.91A5 VPQ580A_540A\Emulex_FC\MC08FC71\Firm_1.91A5	td191a5.all	TS1.91A5
				1.92A1 VPQ580A_540A\Emulex_FC\MC08FC71\Firm_1.92A1	td192a1.all	TS1.92A1
			EFI driver	3.11X1 VPQ580A_540A\Emulex_FC\MC08FC71\EFI_3.11X1	TE311X1.PRGR	TE3.11X1
MC-08FC31	Delivery No.:CA06657-E303 Maintenance No.:CA05951-9610	LP11000	EFI tool	VPQ580A_540A\Emulex_FC\EFI_tool	Elxcli400A1.efi	
			Firmware	2.70A5 VPQ580A_540A\Emulex_FC\MC08FC31\Firm_2.70A5	bd270a5.all	BS2.70A5
				2.80A4 VPQ580A_540A\Emulex_FC\MC08FC31\Firm_2.80A4	bd280a4.all	BS2.80A4
			EFI driver	3.11X1 VPQ580A_540A\Emulex_FC\MC08FC31\EFI_3.11X1	BE311X1.PRGR	BE3.11X1
MC-08FC41	Delivery No.:CA06657-E304 Maintenance No.:CA05951-9611	LP11002	EFI tool	VPQ580A_540A\Emulex_FC\EFI_tool	Elxcli400A1.efi	
			Firmware	2.70A5 VPQ580A_540A\Emulex_FC\MC08FC41\Firm_2.70A5	bf270a5.all	BS2.70A5
				2.80A4 VPQ580A_540A\Emulex_FC\MC08FC41\Firm_2.80A4	bf280a4.all	BS2.80A4
			EFI driver	3.11X1 VPQ580A_540A\Emulex_FC\MC08FC41\EFI_3.11X1	BE311X1.PRGR	BE3.11X1
MC-08FC51	Delivery No.:CA06657-E305 Maintenance No.:CA05951-9612	LPe11000	EFI tool	VPQ580A_540A\Emulex_FC\EFI_tool	Elxcli400A1.efi	
			Firmware	2.70A5 VPQ580A_540A\Emulex_FC\MC08FC51\Firm_2.70A5	zd270a5.all	ZS2.70A5
				2.80A4 VPQ580A_540A\Emulex_FC\MC08FC51\Firm_2.80A4	zd280a4.all	ZS2.80A4
			EFI driver	3.11X1 VPQ580A_540A\Emulex_FC\MC08FC51\EFI_3.11X1	ZE311X1.PRGR	ZE3.11X1
MC-08FC61	Delivery No.:CA06657-E306 Maintenance No.:CA05951-9613	LPe11002	EFI tool	VPQ580A_540A\Emulex_FC\EFI_tool	Elxcli400A1.efi	
			Firmware	2.70A5 VPQ580A_540A\Emulex_FC\MC08FC61\Firm_2.70A5	zf270a5.all	ZS2.70A5
				2.80A4 VPQ580A_540A\Emulex_FC\MC08FC61\Firm_2.80A4	zf280a4.all	ZS2.80A4
			EFI driver	3.11X1 VPQ580A_540A\Emulex_FC\MC08FC61\EFI_3.11X1	ZE311X1.PRGR	ZE3.11X1
MC-08FC81	Delivery No.:CA06657-E321 Maintenance No.:CA05954-1010	LPe1250	EFI tool	VPQ580A_540A\Emulex_FC\EFI_tool	Elxcli400A1.efi	
			Firmware	1.11A5 VPQ580A_540A\Emulex_FC\MC08FC81\Firm_1.11A5	of111a5.all	OS1.11A5
			EFI driver	4.00A1 VPQ580A_540A\Emulex_FC\MC08FC81\EFI_4.00A1	OE400A1.PRGR	OE4.00A1
MC-08FC91	Delivery No.:CA06657-E322 Maintenance No.:CA05954-1011	LPe12002	EFI tool	VPQ580A_540A\Emulex_FC\EFI_tool	Elxcli400A1.efi	
			Firmware	1.11A5 VPQ580A_540A\Emulex_FC\MC08FC91\Firm_1.11A5	ud111a5.all	US1.11A5
			EFI driver	4.00A1 VPQ580A_540A\Emulex_FC\MC08FC91\EFI_4.00A1	UE400A1.PRGR	UE4.00A1

[PQ510A]

Model name	Specification	Number displayed on screen	Firmware/EFI driver	Directry Path	Filename	Confirmation of version number
MC-08FC51	Delivery No.:CA06657-E305 Maintenance No.:CA05951-9612	LPe11000	EFI tool	\\PQ510A\Emulex_FC\EFI_tool	Elxcli400A1.efi	
			Firmware	2.70A5 \\PQ510A\Emulex_FC\MC08FC51\Firm_2.70A5	zd270a5.all	ZS2.70A5
				2.80A4 \\PQ510A\Emulex_FC\MC08FC51\Firm_2.80A4	zd280a4.all	ZS2.80A4
			EFI driver	3.11X1 \\PQ510A\Emulex_FC\MC08FC51\EFI_3.11X1	ZE311X1.PR	ZE3.11X1
MC-08FC61	Delivery No.:CA06657-E306 Maintenance No.:CA05951-9613	LPe11002	EFI tool	\\PQ510A\Emulex_FC\EFI_tool	Elxcli400A1.efi	
			Firmware	2.70A5 \\PQ510A\Emulex_FC\MC08FC61\Firm_2.70A5	zf270a5.all	ZS2.70A5
				2.80A4 \\PQ510A\Emulex_FC\MC08FC61\Firm_2.80A4	zf280a4.all	ZS2.80A4
			EFI driver	3.11X1 \\PQ510A\Emulex_FC\MC08FC61\EFI_3.11X1	ZE311X1.PR	ZE3.11X1
MC-08FC81	Delivery No.:CA06657-E321 Maintenance No.:CA05954-1010	LPe1250	EFI tool	\\PQ510A\Emulex_FC\EFI_tool	Elxcli400A1.efi	
			Firmware	1.11A5 \\PQ510A\Emulex_FC\MC08FC81\Firm_1.11A5	of111a5.all	OS1.11A5
			EFI driver	4.00A1 \\PQ510A\Emulex_FC\MC08FC81\EFI_4.00A1	OE400A1.PR	OE4.00A1
MC-08FC91	Delivery No.:CA06657-E322 Maintenance No.:CA05954-1011	LPe12002	EFI tool	\\PQ510A\Emulex_FC\EFI_tool	Elxcli400A1.efi	
			Firmware	1.11A5 \\PQ510A\Emulex_FC\MC08FC91\Firm_1.11A5	ud111a5.all	US1.11A5
			EFI driver	4.00A1 \\PQ510A\Emulex_FC\MC08FC91\EFI_4.00A1	UE400A1.PR	UE4.00A1

Corrective actions for error messages

Error message	Cause	Corrective action
Unable to Open the file.	The folder path is incorrect. The file name is incorrect.	Enter the correct folder path. Enter the correct file name.
Incompatible Image.	Incompatible firmware has been selected.	Confirm that the firmware of this version number is compatible with the corresponding adapter card.

FUJITSU