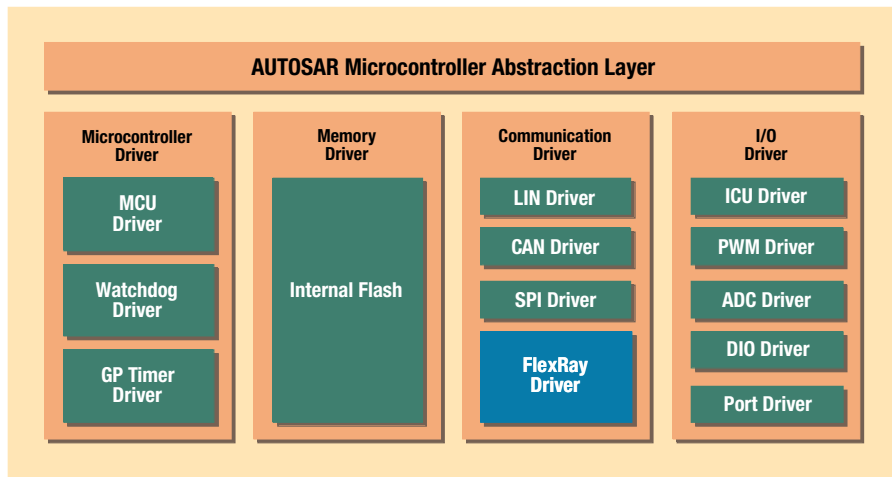


AUTOSAR V2.0 MCAL PACKAGE – State-of-the-art automotive software for Fujitsu’s 32-bit FR MCUs



Fujitsu AUTOSAR V2.0 MCAL package with FlexRay™ option.

Description

Fujitsu offers AUTomotive Open System ARchitecture (AUTOSAR) compliant software for 32-bit FR Microcontrollers (MCUs) of the MB91460 series. AUTOSAR enables cost reduction for software development since different and proprietary software drivers are no longer necessary. Furthermore, a common driver level has the advantage that software can be re-used and the reliability will be increased.

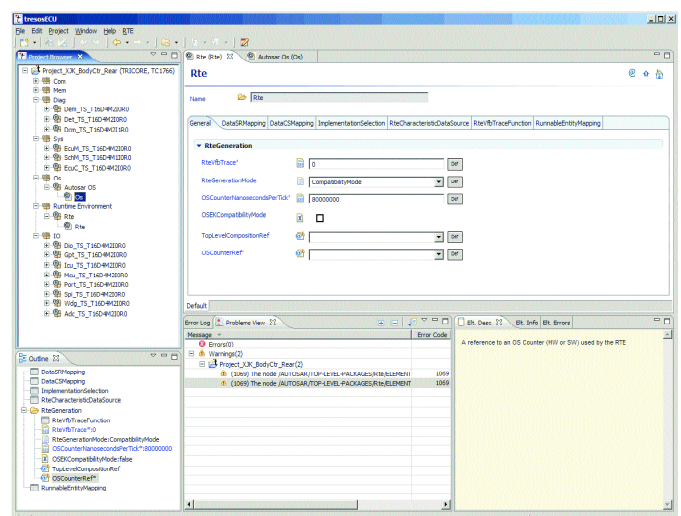
The AUTOSAR V2.0 Microcontroller Abstraction Layer (MCAL) package is the result of the co-operation between Fujitsu Microelectronics Europe (FME) and EB, Elektrotbit. It brings together the know-how of an automotive-proven semiconductor supplier and the experience of a provider of leading automotive software products to offer an optimal solution to the customer. The result of this partnership is a fully integrated AUTOSAR V2.0 standard core package, including the ECU Abstraction Layer, the Service Layer and the Runtime Environment (RTE).

Hence, the Fujitsu MCAL perfectly matches with the EB Autocore solution, but also with any of the other AUTOSAR Basis Software modules available on the market.

Features

- AUTOSAR V2.0 compliant MCAL drivers of high quality and reliability
- Optional AUTOSAR V2.0 FlexRay™ driver can be offered

- Support of Fujitsu 32-bit FR MCUs of the MB91460 series
- EB tresos® Studio is part of the delivery as configuration and code generation tool
- Package includes a complete Make environment
- One tool environment covers complete AUTOSAR V2.0 standard core package
- Sample configurations are available
- Supports
 - Softune Workbench compiler



EB tresos® Studio.

FACTSHEET
FUJITSU AUTOSAR V2.0 MCAL
PACKAGE

Application area

- Automotive
 - Body
 - Chassis
 - Instrumentation

Software package content

- Fujitsu AUTOSAR V2.0 MCAL package
 - Microcontroller drivers (MCU, watchdog and GPT)
 - Memory drivers (internal flash)
 - Communication drivers (LIN, CAN and SPI)
 - I/O drivers (ICU, PWM, ADC, DIO and Port)
 - EB tresos Studio (licensed for the Fujitsu MCAL)
 - Make environment
- Fujitsu AUTOSAR V2.0 FlexRay driver option
 - Communication driver (FlexRay driver)
 - EB tresos Studio (licensed for the Fujitsu MCAL driver)
 - Make environment

Supported devices

32-bit FR MCUs of the MB91460 series

Availability

Available now

Ordering information

Fujitsu AUTOSAR V2.0 MCAL Package

Order Number	Description
SW-MCAL20-DRV-91460-001E	AUTOSAR V2.0 MCAL MB91460 Evaluation Licence
SW-MCAL20-DRV-91460-001T	AUTOSAR V2.0 MCAL MB91460 Prototype-Licence for SW-development
SW-MCAL20-DRV-91460-001S	AUTOSAR V2.0 MCAL MB91460 Series-Production-Licence

Fujitsu AUTOSAR V2.0 MCAL Package

Order Number	Description
SW-MCAL20-FLX-91460-001E	AUTOSAR V2.0 FlexRay Driver Option MB91460 Evaluation Licence
SW-MCAL20-FLX-91460-001T	AUTOSAR V2.0 FlexRay Driver Option MB91460 Prototype- Licence for SW-development
SW-MCAL20-FLX-91460-001S	AUTOSAR V2.0 FlexRay Driver Option MB91460 Series-Production-Licence