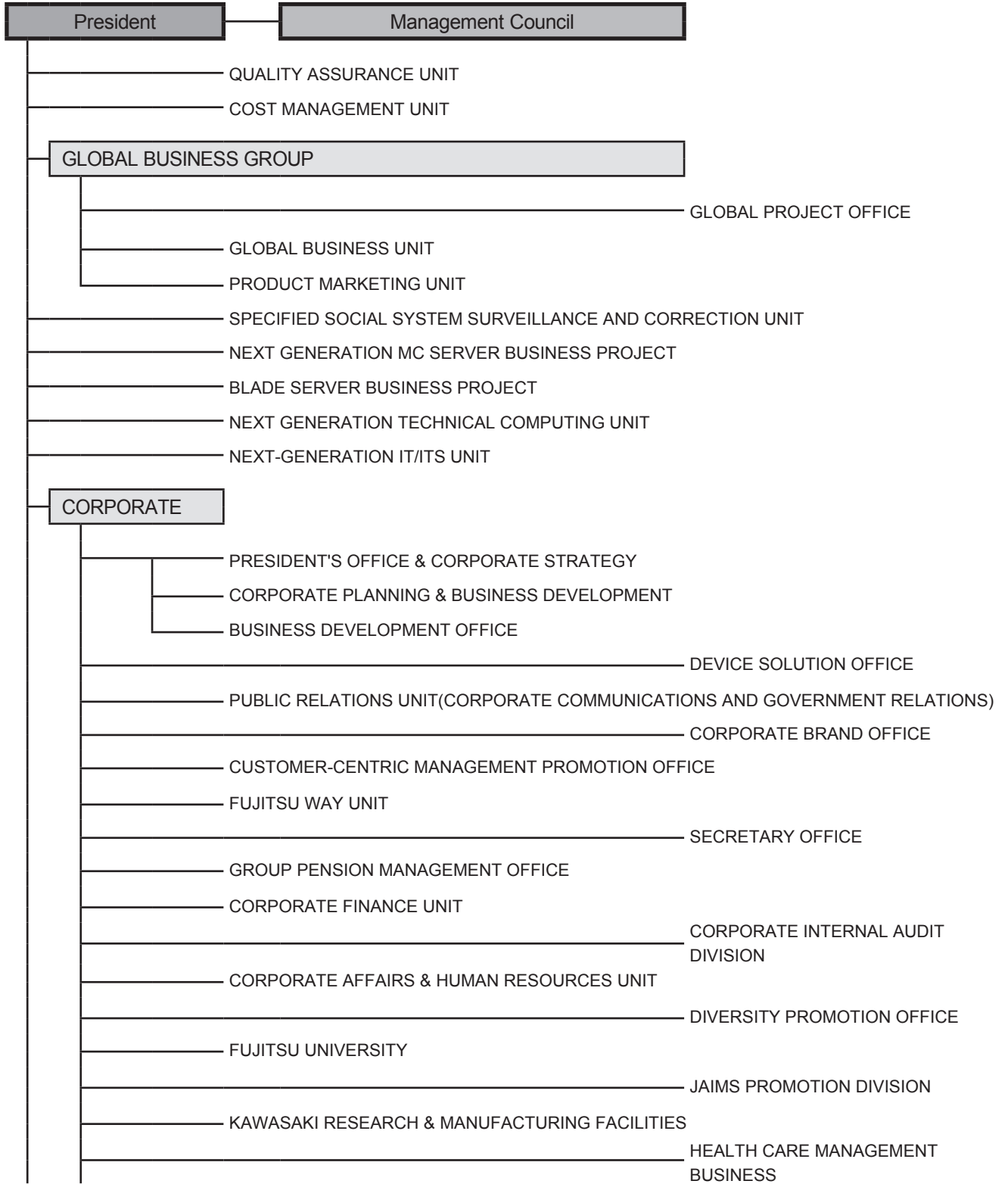


Organizational Chart

Organization information :10/10/2008



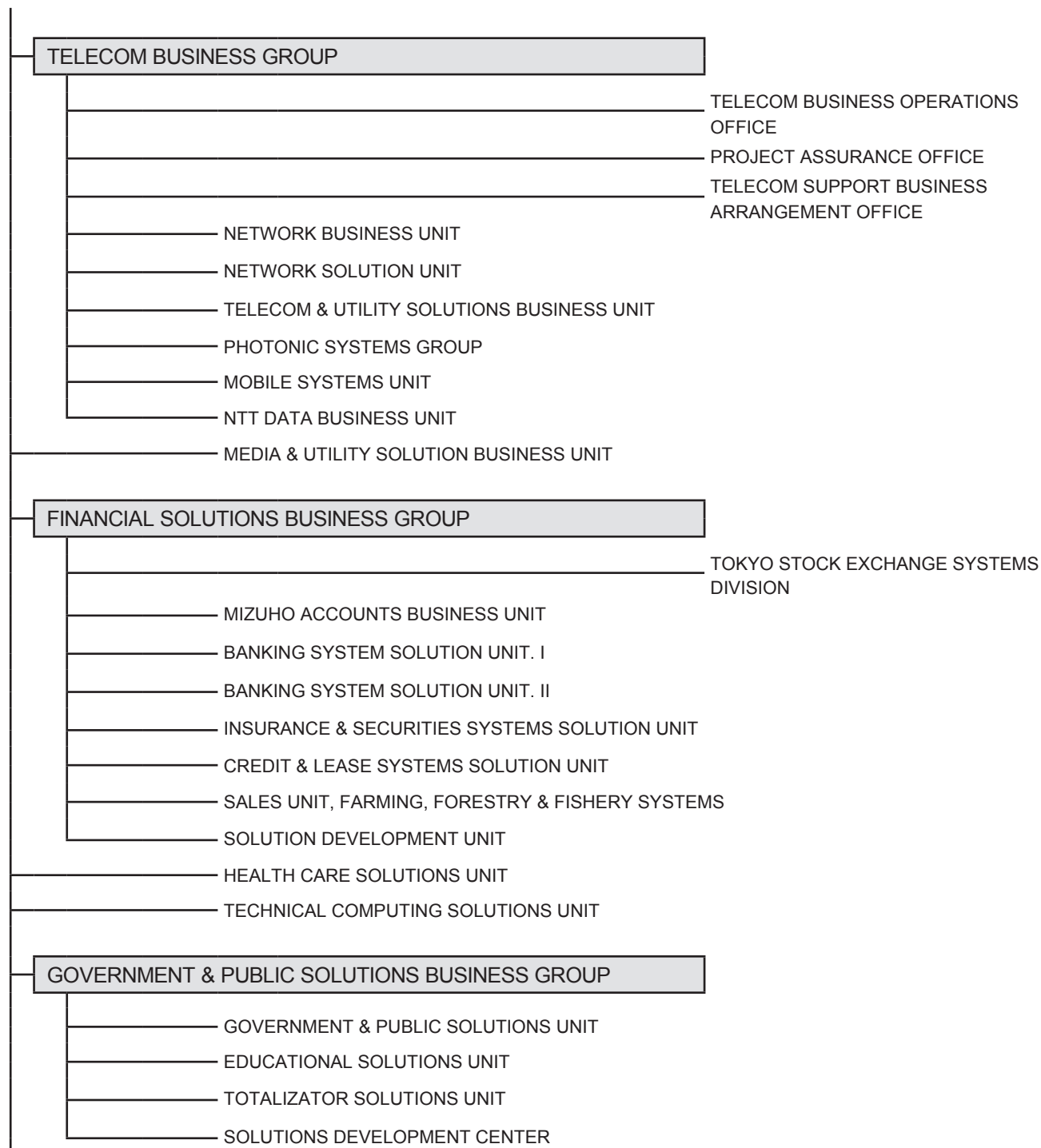
- FUJITSU KAWASAKI HOSPITAL
- LEGAL UNIT
- INTELLECTUAL PROPERTY UNIT
- SECURITY EXPORT CONTROL HEADQUARTERS UNIT
- CORPORATE IT UNIT
- PROCUREMENT UNIT
- CORPORATE LOGISTICS UNIT
- CORPORATE ENVIRONMENTAL AFFAIRS UNIT

SOLUTION BUSINESS SUPPORT GROUP

- AUTONOMIC KAIZEN PROMOTION OFFICE
- SOLUTION BUSINESS MANAGEMENT UNIT
- MARKETING UNIT
- PLATFORM BUSINESS UNIT
- ASSURANCE UNIT
- TRIOLE BUSINESS UNIT
- ERP BUSINESS UNIT
- GLOVIA BUSINESS UNIT
- BUSINESS INCUBATION UNIT
- BIOIT BUSINESS DEVELOPMENT UNIT
- SAAS APPLICATION PROJECT OFFICE
- INTELLECTUAL PROPERTY DIVISION
- SERVICE CENTER, SOLUTION BUSINESS GROUP

INDUSTRIES & DISTRIBUTION SOLUTIONS BUSINESS GROUP

- MANAGEMENT CENTER
- BUSINESS PROCESS INNOVATION DIVISION
- GLOBAL BUSINESS CENTER
- LCM BUSINESS DIVISION
- PLM BUSINESS CENTER
- ITS BUSINESS DIVISION
- AUTOMOTIVE INDUSTRY BUSINESS UNIT
- INDUSTRY BUSINESS UNIT
- DISTRIBUTION BUSINESS UNIT



REGIONAL BUSINESS GROUP

BUSINESS ADMINISTRATION
DEPARTMENT
REGIONAL BUSINESS RISK
MANAGEMENT PROMOTION
DIVISION

- PARTNERS BUSINESS UNIT
- SMB SOLUTION UNIT
- HOKKAIDO REGIONAL SALES UNIT
- TOHOKU REGIONAL SALES UNIT
- METROPOLITAN AREA SALES UNIT
- KANTO-KOSHINETSU REGIONAL SALES UNIT
- TOKAI REGIONAL SALES UNIT
- HOKURIKU REGIONAL SALES UNIT
- KANSAI REGIONAL SALES UNIT
- CHUGOKU REGIONAL SALES UNIT
- SHIKOKU REGIONAL SALES UNIT
- KYUSHU REGIONAL SALES UNIT
- LOCAL GOVERNMENT SOLUTIONS UNIT
- DEFENSE SYSTEMS UNIT

IT SERVICES BUSINESS GROUP

SAAS BUSINESS DIVISION
DIGITAL MEDIA NETWORK SERVICES
DIVISION
SERVICE MANAGEMENT DIVISION

- SERVICE BUSINESS UNIT
- OUTSOURCING BUSINESS UNIT
- NETWORK SERVICES BUSINESS UNIT
- IT INFRASTRUCTURE SERVICE BUSINESS UNIT
- SECURITY SOLUTION UNIT

Corporate Data

