

## VRS 4.1 for Fujitsu scanner (PFU OEM Bundle) Service Pack 1 Notes.

### 1. The usage of Service pack1 (SP1)

(1) Service Pack1 (SP1) file name : vrs410update0.1.exe

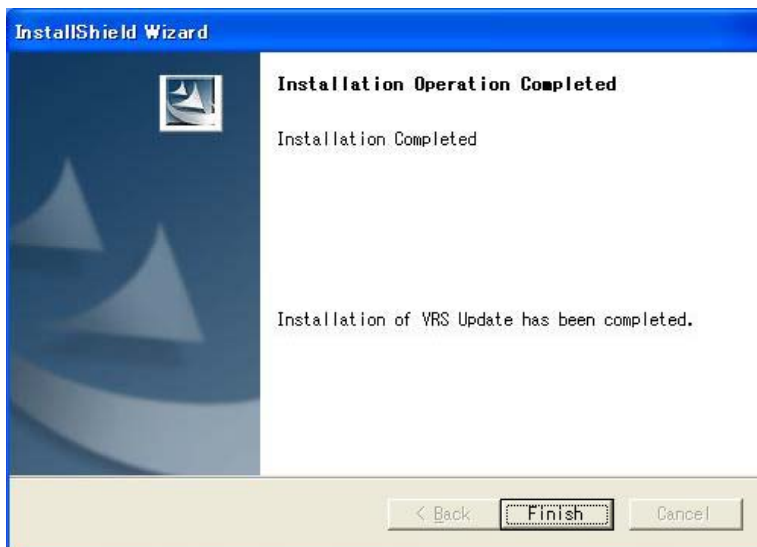
(2) How to use

1) Log in with Administrator privilege

2) Place the file of SP1(vrs410update0.1.exe)onto your desktop and execute the file.

(Confirm that the VRS4.1 is not running before your executing the file)

3) When the following dialog box is displayed, your update is completed.



(3) Version Display

The version display changes from “4.10.039PFU” to “4.10.039-0.1PFU”.



Before update



After update

## **2. Contents of modified malfunctions**

As of the Service pack1(SP1), the following malfunctions are improved/modified.

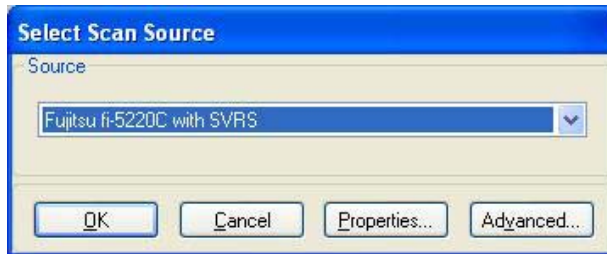
However, with regards to the item No.2-7 “Collections on scribal errors related to documentations”, the modified version of the “Installation Guide” shall be obtained separately from this Website. Even your executing the SP1 does not perform them writing into your disk.

Items	Contents	Languages Environments	Subjected Models
2-1	An improvement in connecting method for fi-5220C	All Languages	fi-5220C
2-2	The malfunction modified when using the “Counter Reset” mode of imprinters	All Languages	fi-5650C,fi-5530C,fi-4340C, fi-5120C
2-3	An improvement on the issue of “out of memory” occurrence (Partially the related issue remains)	All Languages	fi-5750C,fi-5650C,fi-5530C fi-4340C,fi-5220C,fi-5120C
2-4	A modification on the issue that fi-5530C ISIS driver window is displayed in English under Japanese language environments.	Japanese	fi-5530c
2-5	A modification on the issue that the “Scanner and Camera” display is incorrect using fi-5650C under Japanese language environments.	Japanese	fi-5650C
2-6	Collection on Chinese character errors in Japanese environments	Japanese	fi-5750C,fi-5650C,fi-5530C fi-4340C,fi-5220C,fi-5120C
2-7	Collection on scribal errors related to documentations	All language	fi-5750C,fi-5650C,fi-5530C fi-4340C,fi-5220C,fi-5120C

## 2-1. An improvement in connecting method for fi-5220C

(1) The occurrence procedure/details of the issue (Subjected model : fi-5220C)

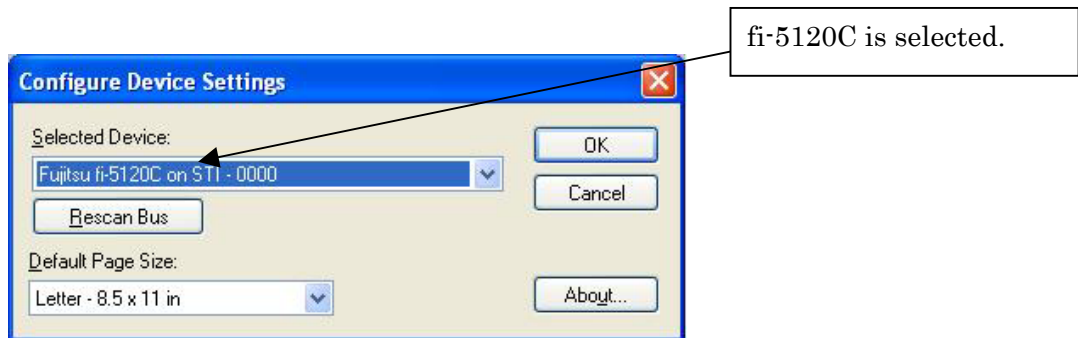
- 1) Select fi-5220C when installing VRS4.1.
- 2) Run the VCDEMO, then select fi-5220C as the Scan source.



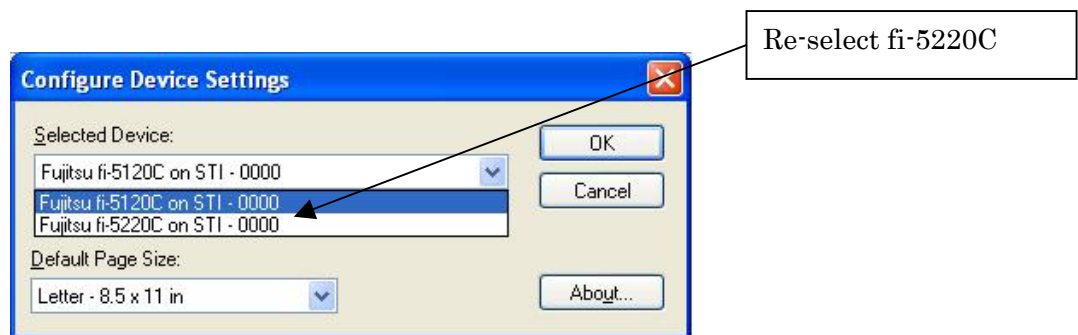
(Figure 2-1-1)

3) The "Configure Device Setting" window of ISIS driver is displayed.

Since the device is fi-5120C, you need to reselected fi-5220C from menu.

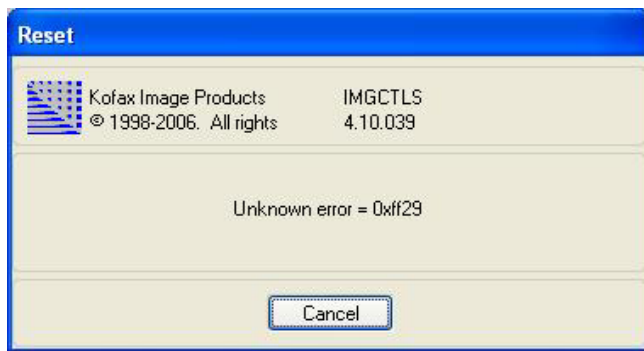


(Figure 2-1-2)



(Figure 2-1-3)

- 4) At the Figure2-1-2 as well as the Figure2-1-3, The Figure2-1-4 is displayed when selecting fi-5120C, and as a result fi-5220C is failed to correctly connected.

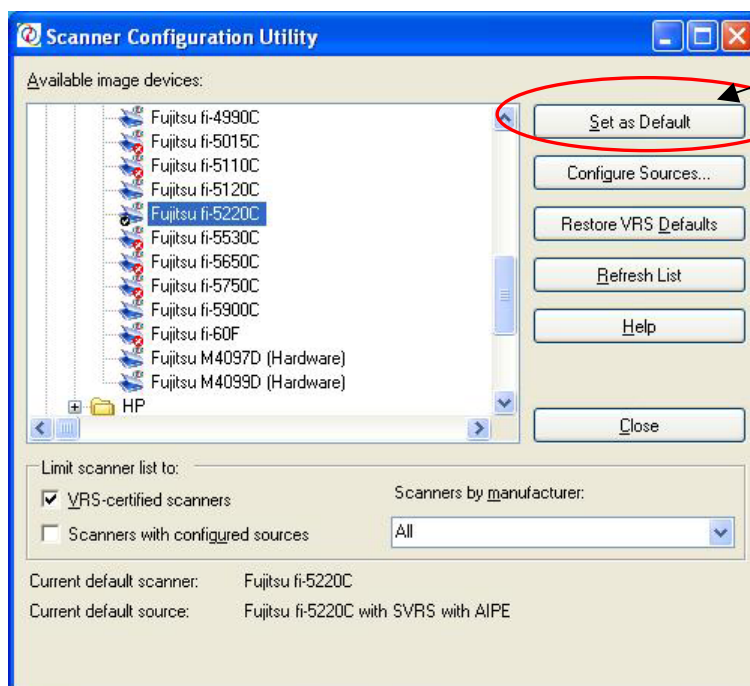


(Figure 2-1-4)

- 5) Once the above Figure2-1-4 occurs, the following operation is required.  
(The Figure2-1-2 is no longer displayed, and the error of the Figure2-1-4 always appears)

5-1) From the [Start] menu of the windows, run the [Scanner Configuration Utility].  
(Start -> Kofax VRS -> Scanner Configuration Utility)

5-2) Select fi-5220C, and then click the [Set as Default] button. No changes can be visible on the screen, but the Figure2-1-2 becomes to be displayed again.



Set as Default

(2) Changes done by Sp1

Applying the SP1 update makes the connection easier and smooth by not displaying the ISIS driver device selection window (Figure2-1-2) but by selecting the fi-5220C automatically.

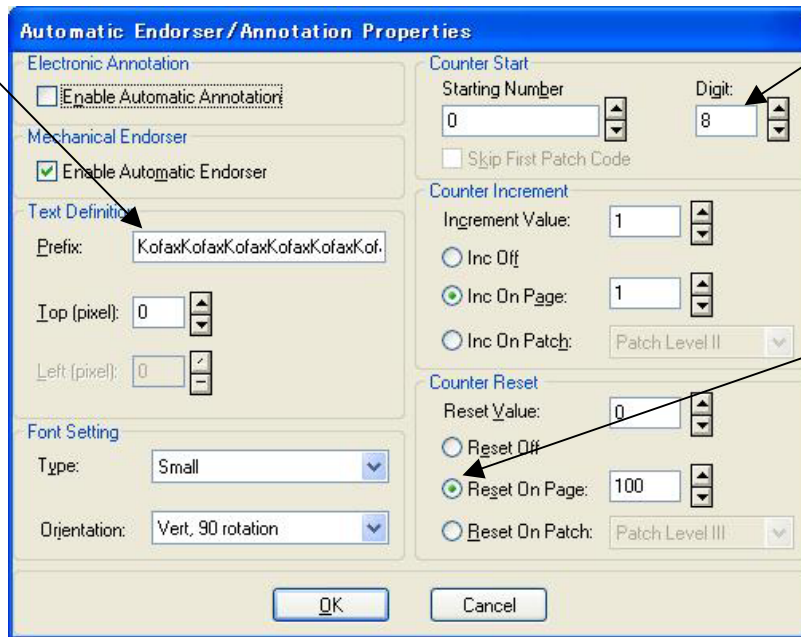
## 2-2. The malfunction modified when using the “Counter Reset” mode of imprinters

(1) The occurrence procedure/details of the issue

(Subjected model : fi-5650C,fi-5530C,fi-4340C,fi-5120C)

- 1) Select [Automatic Endorser / Annotation Properties] from the [Imaging] tag of the VCDEMO
- 2) Enable the “Counter Reset” mode and configure imprinter settings of 35 character strings + Counter eight(8)digits, then run the scanning.

### 35 Character Strings



Select the Counter

8 digit

Enable the “Counter

Reset”

3) When the total number of character strings + Counter digit exceeds 40 with the “Counter Reset” mode, its imprinting does not take place.

(2) Changes done by SP1

Applying the SP1 upgrade enables you to imprint up 43 character strings (the total number of character strings + Counter digit) even with the “Counter Reset” mode.

**2-3. An improvement on the issue of “Out of memory” occurrence**

(1) The occurrence procedure/details of the issue

(Subjected model : fi-5750C,fi-5650C,fi-5530C,fi-4340C,fi-5220C,fi-5120C)

1) The “Out of memory” error might occur with the following scanning modes.

(Below 300dpi has no such issue)

	400dpi color scanning		600dpi Gray scanning	
	Simplex	Duplex	Simplex	Duplex
Smaller than A4/Letter Size	OK	NG	OK	NG
Bigger than A4/Letter Size	NG	NG	NG	NG

NG: The “Out of memory” error occurs / OK: No error occurs

(2) Changes by SP1

Applying the SP1 updates makes the “Out of memory” error not occur when scanning with sizes smaller than A4/Letter.

Even your upgrading the SP1, there are still slight possibilities that this “Out of memory” error occurs when using media bigger than A4/Letter size. Therefore, do not use such media.

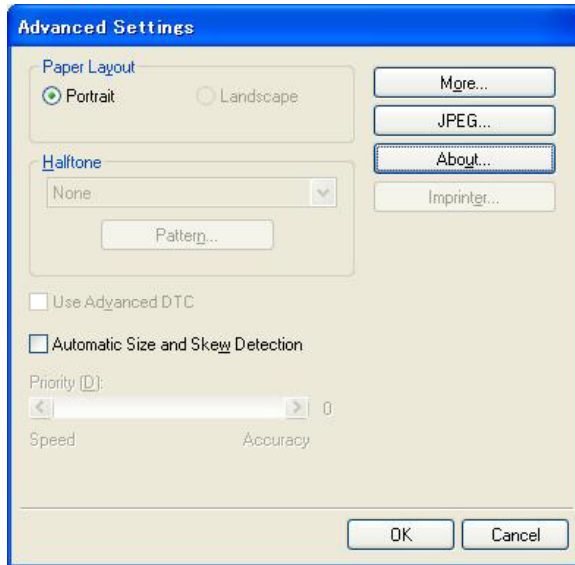
	400dpi color scanning		600dpi Gray scanning	
	Simplex	Duplex	Simplex	Duplex
Smaller than A4/Letter Size	OK	OK	OK	OK
Bigger than A4/Letter Size	NG	NG	NG	NG

NG: The “Out of memory” error occurs / OK: No error occurs

**2-4. A modification on the issue that fi-5530C ISIS driver window is displayed in English under Japanese language environments.**

(1) The occurrence procedure/details of the issue (Subjected model : fi-5530C)

Installing fi-5530C ISIS driver after having installed fi-5120C ISIS driver, and then performing scanning via fi-5530C, the ISIS driver setting window is displayed in English



(2) Changes by SP1

Applying the SP1 updates makes the driver window display in Japanese.



2-5. A modification on the issue that the “Scanner and Camera” display is incorrect using fi-5650C under Japanese language environments.

(1) The occurrence procedure/details of the issue (Subjected model : fi-5650C)

When confirming the property at “Scanner and Camera” having been fi-5650C connected, the property is partially displayed in English.



(2) Changes by SP1

Applying the SP1 update makes the property display correctly in Japanese.



## 2-6. Collections on Chinese character errors in Japanese environments

- (1) The occurrence procedure/details of the issue (Subjected model : fi-5650C)  
(Subjected model : fi-5750C,fi-5650C,fi-5530C,fi-4340C,fi-5220C,fi-5120C)

At the VRS adjustment control window, the Chinese character of “brightness” is incorrect.



- (2) Changes by SP1

Applying the SP1 update makes the driver window display in the correct Chinese characters.

## 2-7. Collections on scribal errors related to documentations

(1) The occurrence procedure/details of the issue.

(Subjected model : fi-5750C,fi-5650C,fi-5530C,fi-4340C,fi-5220C,fi-5120C)

1) Collections are done on the scribal errors found in the related User's Guides as well as the Help files

2) The modified versions of installation Guides are provided in the following files.

Language	Installation Guide File Names
English	VRS Installation Guide.pdf
Japanese	VRS Installation Guide JPN.pdf
German	VRS Installation Guide DEU.pdf
French	VRS Installation Guide FRA.pdf
Italian	VRS Installation Guide ITA.pdf
Spanish	VRS Installation Guide SPA.pdf
Korean	VRS Installation Guide KOR.pdf
Chinese (Traditional)	VRS Installation Guide CHT.pdf
Chinese (Simplified)	VRS Installation Guide CHS.pdf

(2) Changes by SP1

1) User's Guides, Help files : Applying the SP1 update performs installing the modified versions of the scribal errors.

2) Installation Guides : The installation Guides are found in this website.