

fi-5000N Firmware Updating Procedure

1. Preparation before Updating the Firmware

- 1) Before updating the firmware, connect the fi-5000N to the PC (where the Firmware Update Tool is to be installed) via a network.
- 2) If a USB cable is connected to the fi-5000N, disconnect it from the fi-5000N.

Note

- Configure the IP addresses of the PC and the fi-5000N within the same subnet.

Example of Network Settings for PC and fi-5000N

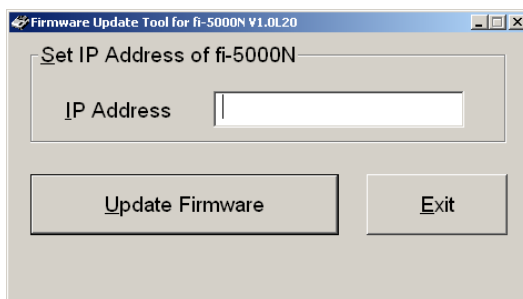
Device	IP Address / Subnet Mask
PC	123.123.123.xxx / 255.255.255.0
fi-5000N	123.123.123.xxx / 255.255.255.0

- Use the PC that operates on Windows 2000, Windows XP, or Windows Vista (excludes their x64 bit versions).

2. Firmware Updating Procedure

Update the fi-5000N firmware following the procedure below.

- 1) Disconnect the USB cable from the fi-5000N, and then turn on the fi-5000N.
⇒The fi-5000N will show a message "The scanner is not connected."
- 2) Execute "**fi5kN_FirmUp.exe**" downloaded from the web page.
⇒The Firmware Update Tool for fi-5000N dialog box will appear.



- 3) Confirm the IP address of the fi-5000N.
⇒You can get the IP address following the instructions given below.

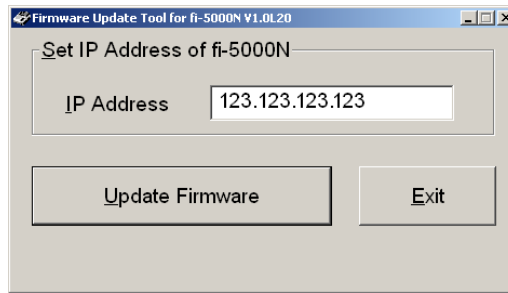
《How to Get the IP Address of the fi-5000N》

- (1) When the message "The scanner is not connected." appears on fi-5000N's Message Display, press the [SET] key. The settings screen appears.
- (2) With the [↓] key, select [Show Network Config].
- (3) As the IP address of the fi-5000N is displayed on the [IP:] line of the settings screen, write it down in the form below:

IP address of fi-5000N: _____

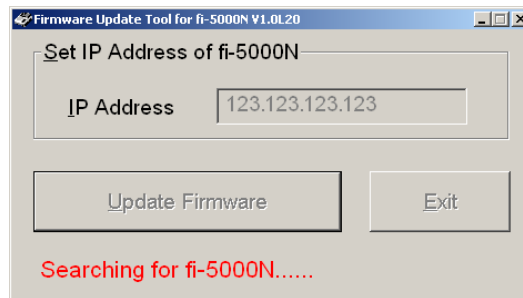
- (4) **Press the [ESC] key on the fi-5000N twice to return to the state where the message "The scanner is not connected." is displayed.**

- 4) Type in the IP address of the fi-5000N, which you took a note of in Step 3) above, in the [IP Address] field shown below.

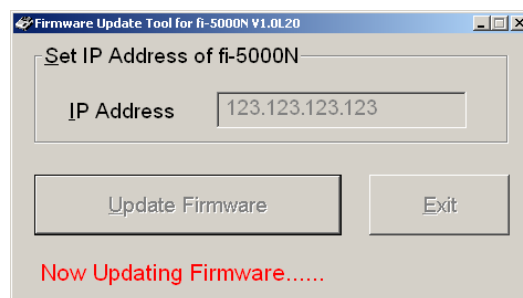


- 5) Click the [Update Firmware] button to start searching for the fi-5000N whose IP address matches the entered one.

⇒ The dialog box will display the following message, showing that the program is searching for the specified IP address.



⇒ If the searching is successful, the message in the dialog box will change, showing that the program is updating the firmware.

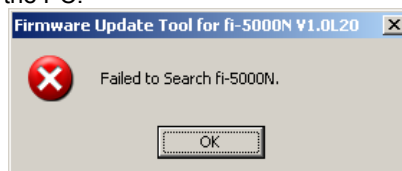


Note

Do NOT turn off the fi-5000N and PC during the updating process.

《When Searching of the fi-5000N is Unsuccessful》

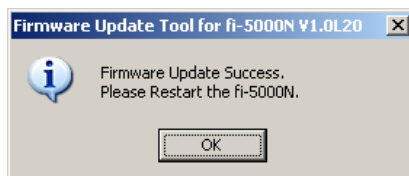
The following message appears on the PC:



In case the searching has failed, confirm:

- The IP address of the fi-5000N entered in Step 4) is correct.
- The PC and the fi-5000N are configured within the same subnet.
- The LAN cable connection is proper.
- The fi-5000N is turned on.

⇒The following message box will appear once the firmware updating is completed.



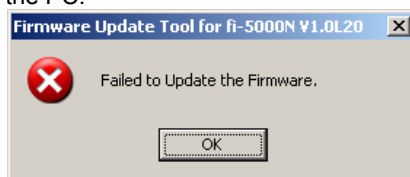
6) Click the [OK] button.

⇒The Firmware Update Tool will terminate.

7) Turn off the fi-5000N, and proceed to Section 3 “Updating the Firmware Revision Number.”

《When Updating of the Firmware is Unsuccessful》

The following message appears on the PC:



Here, confirm:

- Case 1:** If the fi-5000N does not show the message “The scanner is not connected,” follow the instructions in 《How to Confirm the IP Address of the fi-5000N》 in Step 3) above, or turn on the fi-5000N again. When the message “The scanner is not connected.” appears, do the procedure from Step 2) above.
- Case 2:** If the fi-5000N shows the message “Backup mode for only recovering main program” after it is turned on, update the firmware following the instructions in **Firmware Updating from Backup Mode** below.

Firmware Updating from Backup Mode

Should the firmware updating fail due to the fi-5000N being powered OFF during updating, etc., start the fi-5000N in backup mode. If the fi-5000N is started in backup mode, the message “Backup mode for only recovering main program” will appear.

Note

If a static IP address is used in normal mode, the same address (which you took a note of in Step 3)) will be used while the fi-5000N operates in backup mode. If DHCP is used in normal mode, the fi-5000N will use an IP address of 192.168.1.1 in backup mode.

To update the firmware in backup mode, do Steps 2) to 6) in Section 2 “Firmware Updating Procedure” for the PC while the fi-5000N shows the message “Backup mode for only recovering main program.”

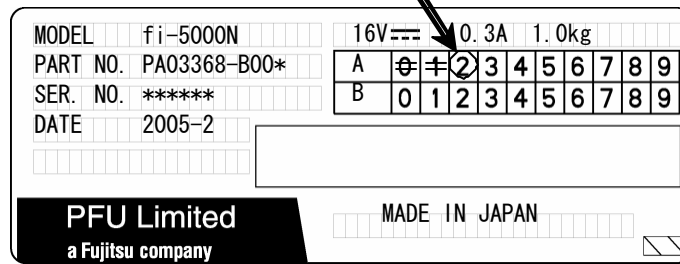
The fi-5000N will start in normal mode if the firmware updating is completed successfully.

3. Updated Firmware Revision Number

After the firmware updating, you need to update the revision number of the fi-5000N as shown below:

Revision number before updating		Revision number after updating
A0	→	A2
A1	→	A2
D0	→	D1

Update the revision number on the manufacture label on the bottom side of the fi-5000N. Circle the revision number after updating as shown below. (The revision number example in the figure is “A2.”)



MODEL fi-5000N 16V 0.3A 1.0kg

PART NO. PA03368-B00*

SER. NO. *****

DATE 2005-2

A	0	1	2	3	4	5	6	7	8	9
B	0	1	2	3	4	5	6	7	8	9

PFU Limited
a Fujitsu company

MADE IN JAPAN

The image shows a manufacture label for the fi-5000N. The label contains fields for MODEL, PART NO., SER. NO., and DATE. To the right of these fields is a revision number selection grid with two rows, A and B, and columns for digits 0-9. The '2' in the A row is circled, and an arrow points to it from the text '0.3A' above. Below the grid, there is a logo for PFU Limited (a Fujitsu company) and the text 'MADE IN JAPAN'.

This has completed the procedure for updating the firmware.

Note

You need to update the firmware only once for each fi-5000N.