

VME Applications as a Service

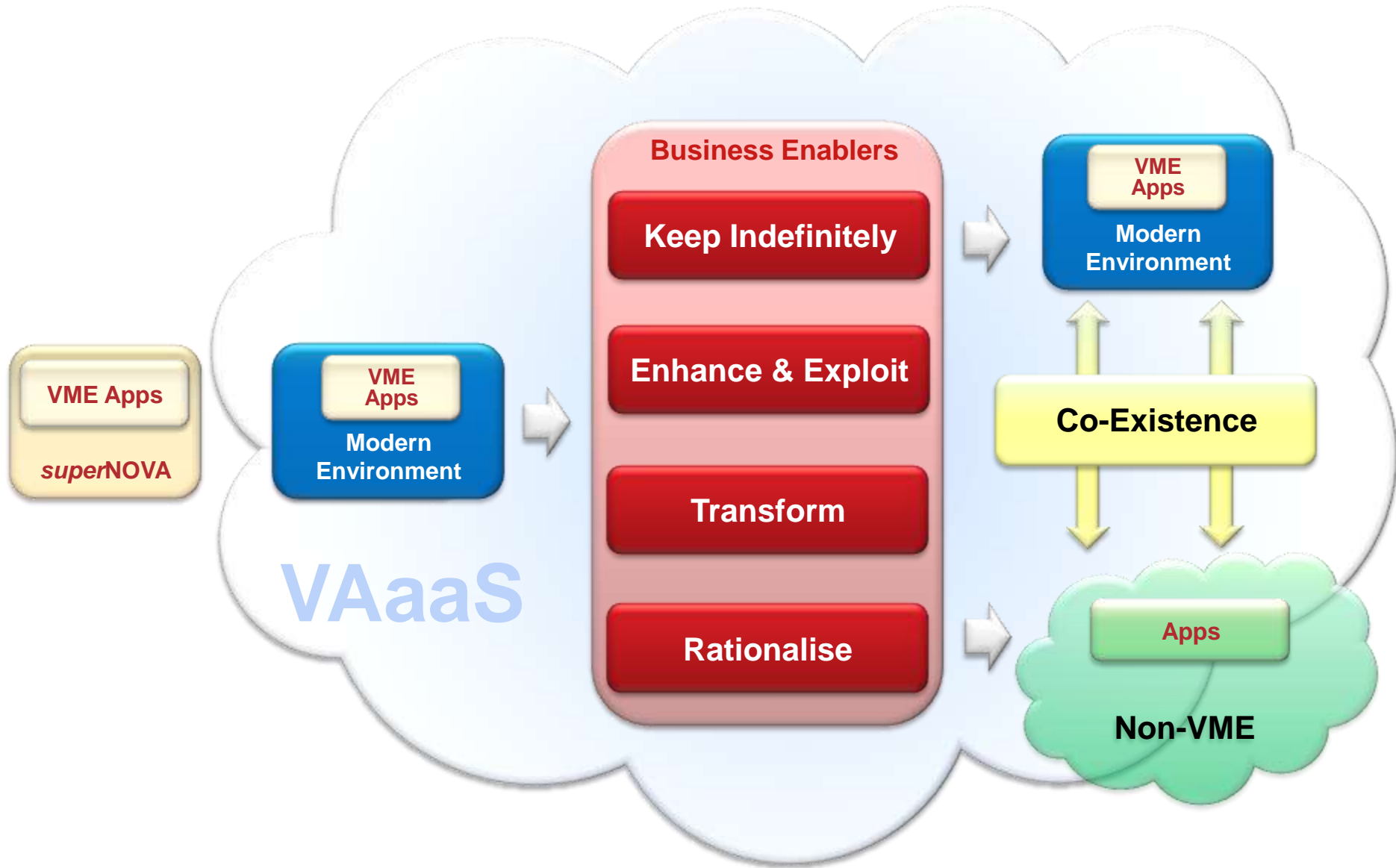
George Allt

Head of VME Centre of Excellence

- Enabling VME Applications to keep running beyond 2020
- Providing CHOICE regarding the future
- Builds on wider Fujitsu capabilities
- Consistent with Cloud Strategy
- Major investment by Fujitsu

- A response to customers requirements:
 - VME Applications required beyond 2020
 - VME Applications need to be more agile
 - VME Applications need to integrate with Enterprise environment
 - Cost reduction
- Achieved by an ongoing programme of:
 - Investment in people, skills & knowledge
 - Reducing dependence on VME
 - Supportable for long term
 - Modernisation
 - Business driven
 - Improves responsiveness & productivity
 - Effective integration with non-VME environments
 - Responsive to business change
- Building on pedigree (Just works)

VAaaS enables choice



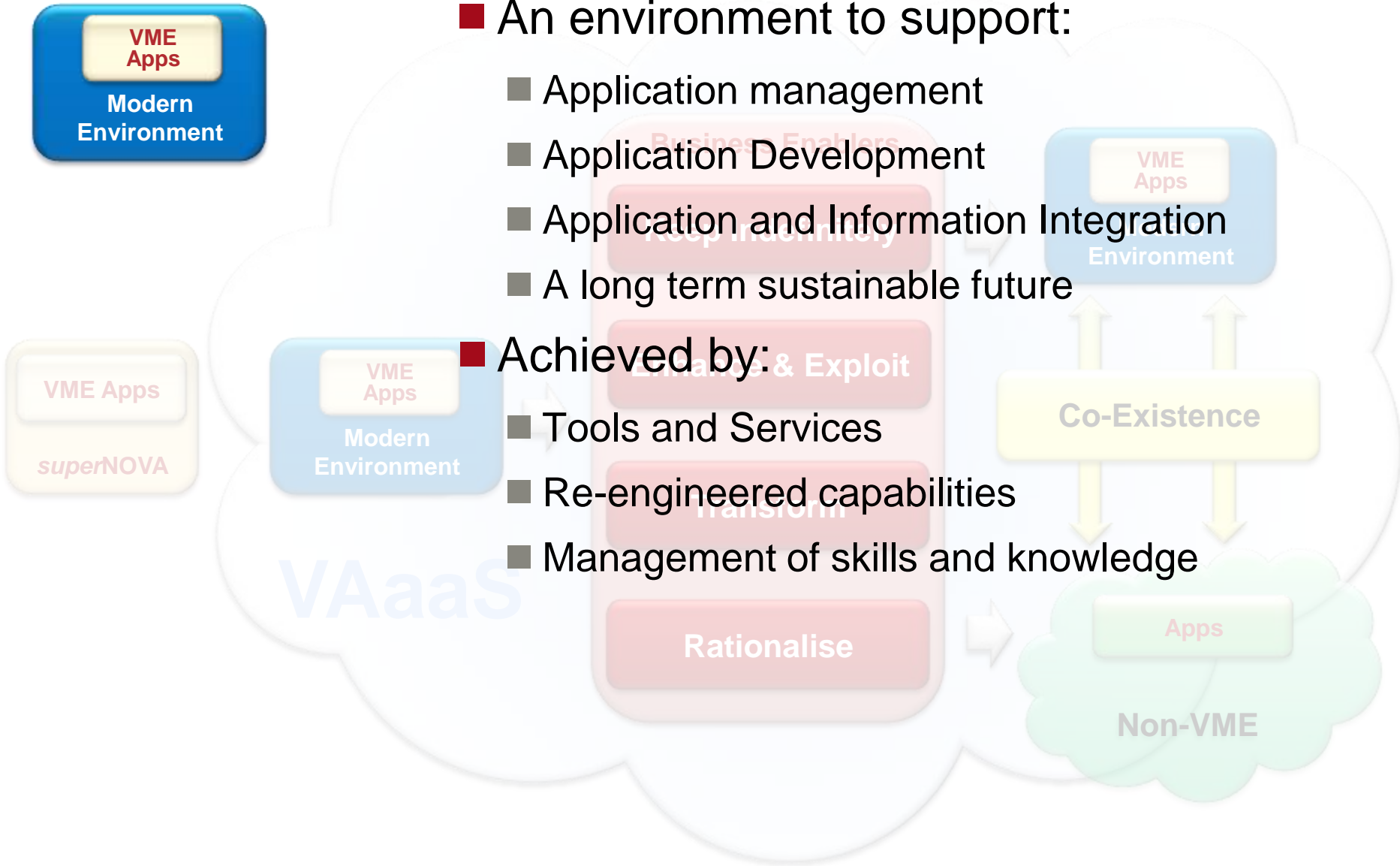
VAaaS enables choice

■ An environment to support:

- Application management
- Application Development
- Application and Information Integration
- A long term sustainable future

■ Achieved by:

- Tools and Services
- Re-engineered capabilities
- Management of skills and knowledge



Keep Indefinitely

■ Keeping VME applications running

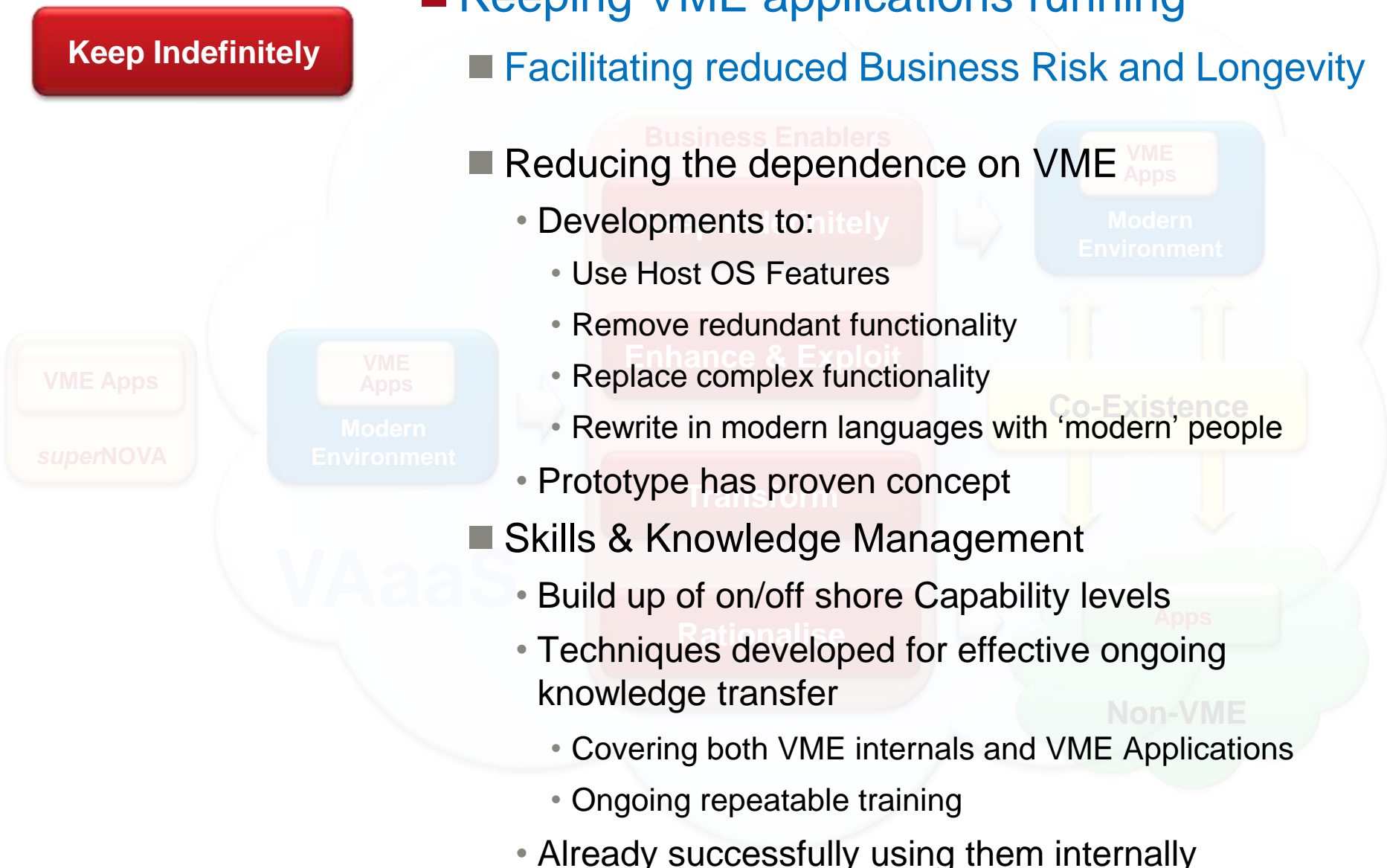
■ Facilitating reduced Business Risk and Longevity

■ Reducing the dependence on VME

- Developments to:
 - Use Host OS Features
 - Remove redundant functionality
 - Replace complex functionality
 - Rewrite in modern languages with 'modern' people
- Prototype has proven concept

■ Skills & Knowledge Management

- Build up of on/off shore Capability levels
- Techniques developed for effective ongoing knowledge transfer
 - Covering both VME internals and VME Applications
 - Ongoing repeatable training
- Already successfully using them internally



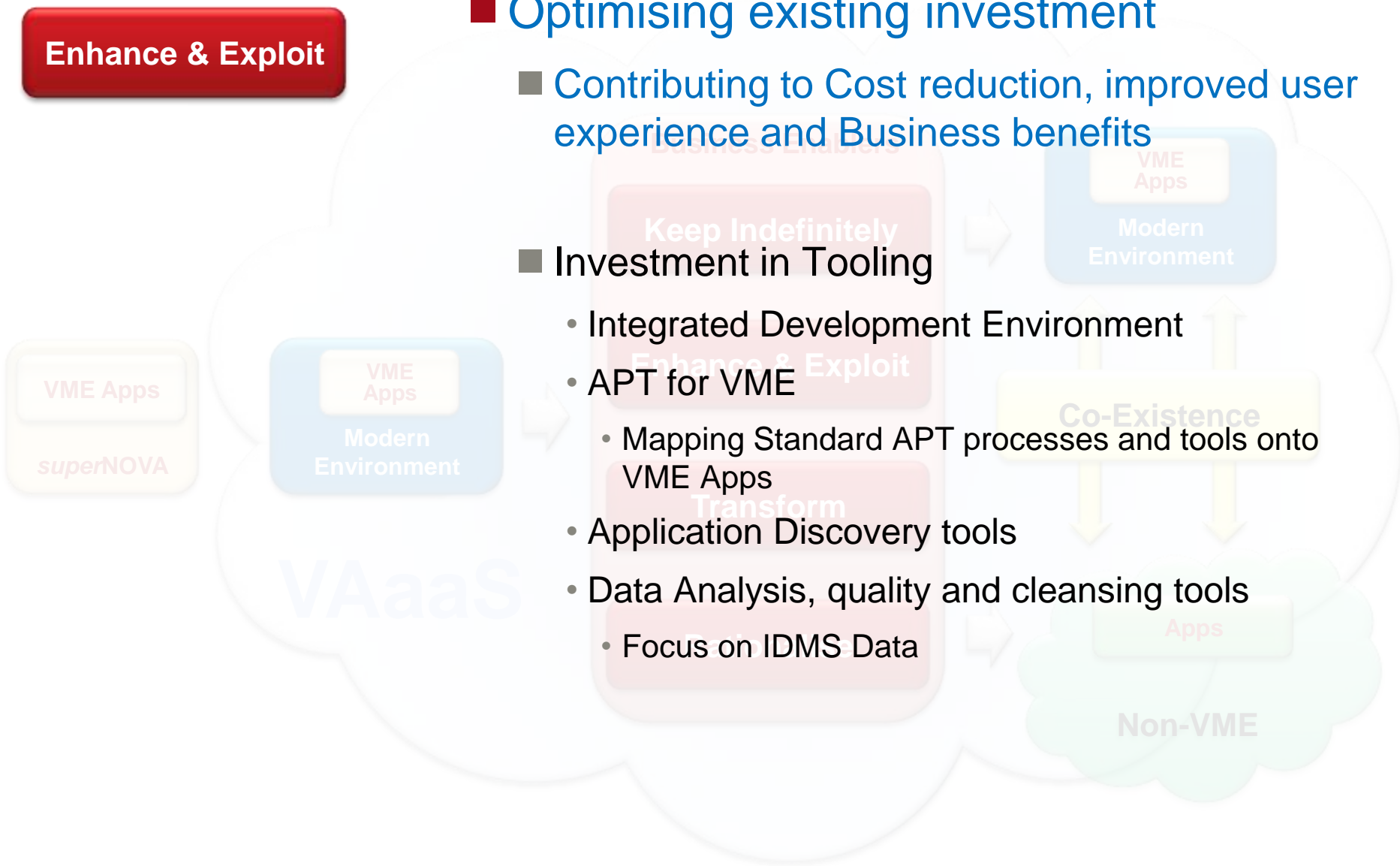
Enhance & Exploit

■ Optimising existing investment

- Contributing to Cost reduction, improved user experience and Business benefits

■ Investment in Tooling

- Integrated Development Environment
- APT for VME
 - Mapping Standard APT processes and tools onto VME Apps
- Application Discovery tools
- Data Analysis, quality and cleansing tools
 - Focus on IDMS Data



Transform

■ VME Applications converted or re-architected to non-VME platforms

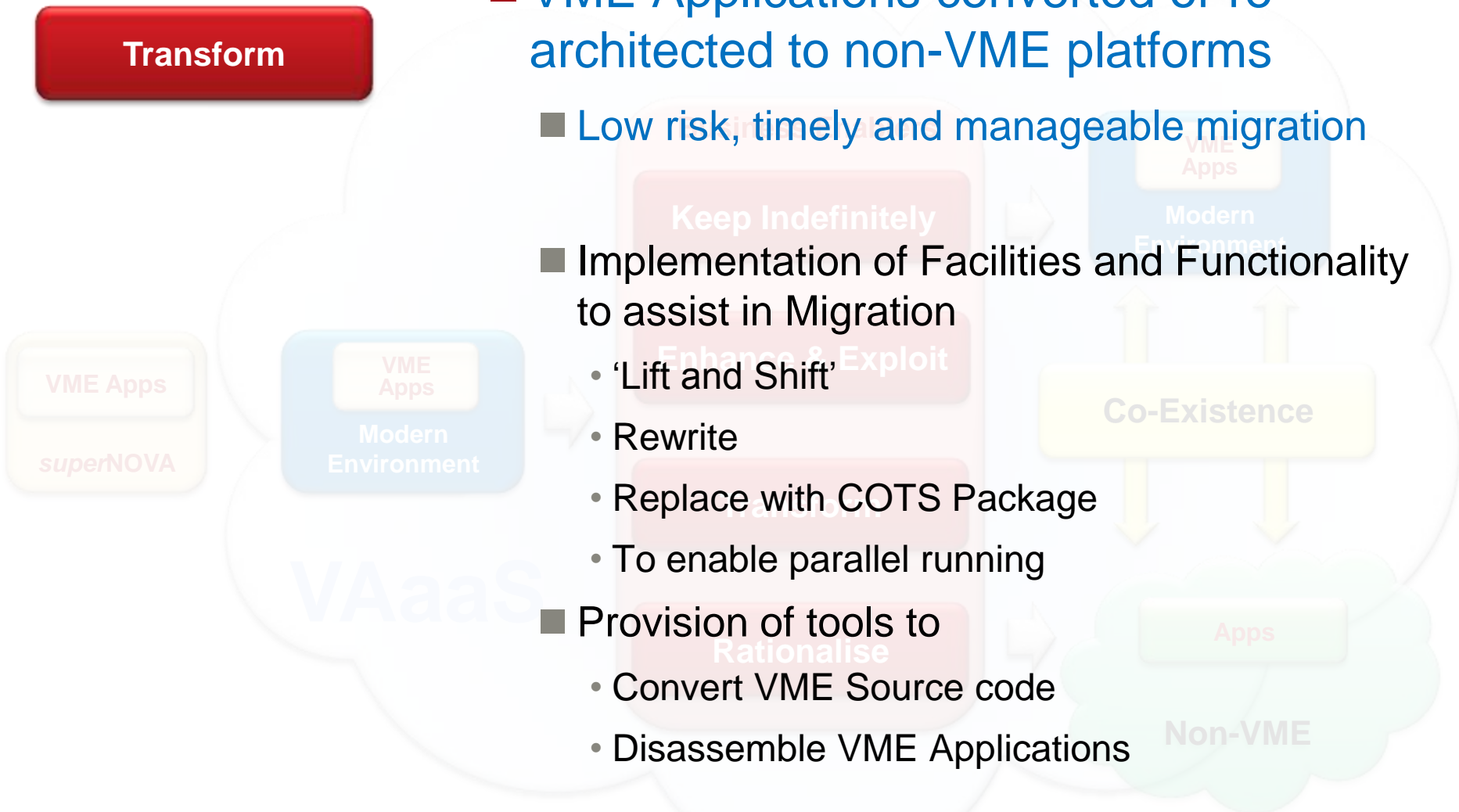
■ Low risk, timely and manageable migration

■ Implementation of Facilities and Functionality to assist in Migration

- 'Lift and Shift'
- Rewrite
- Replace with COTS Package
- To enable parallel running

■ Provision of tools to

- Convert VME Source code
- Disassemble VME Applications



■ Co-Existence with Non-VME Applications and Data

- Optimised efficiency of existing and new investments

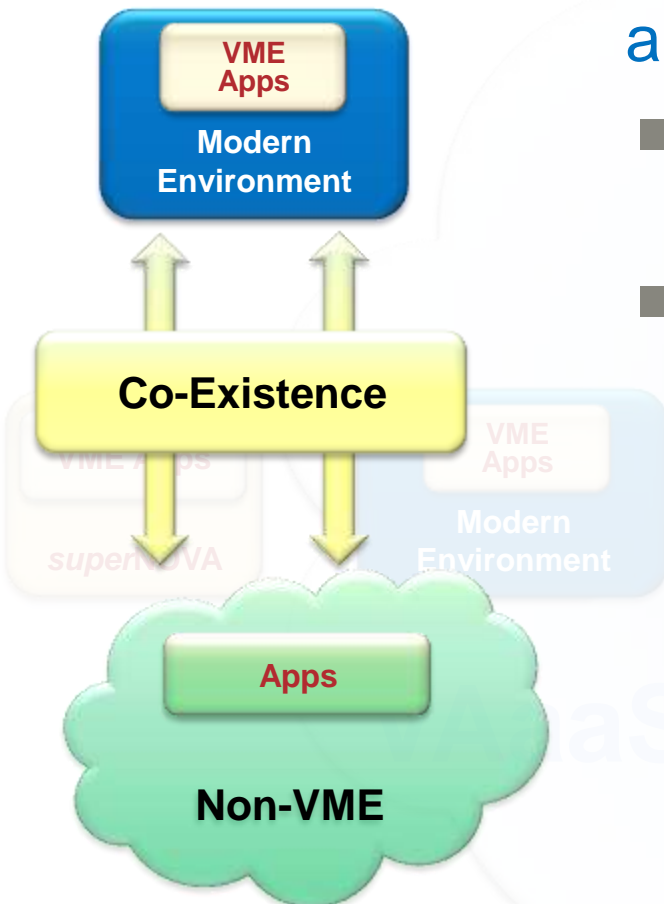
- Developments covering:

- Application Integration

- HostTalk exploitation
- Invocation of commands between VME and non-VME Applications
- Batch communication with non-VME Applications
- Provision of an Integrated System Management

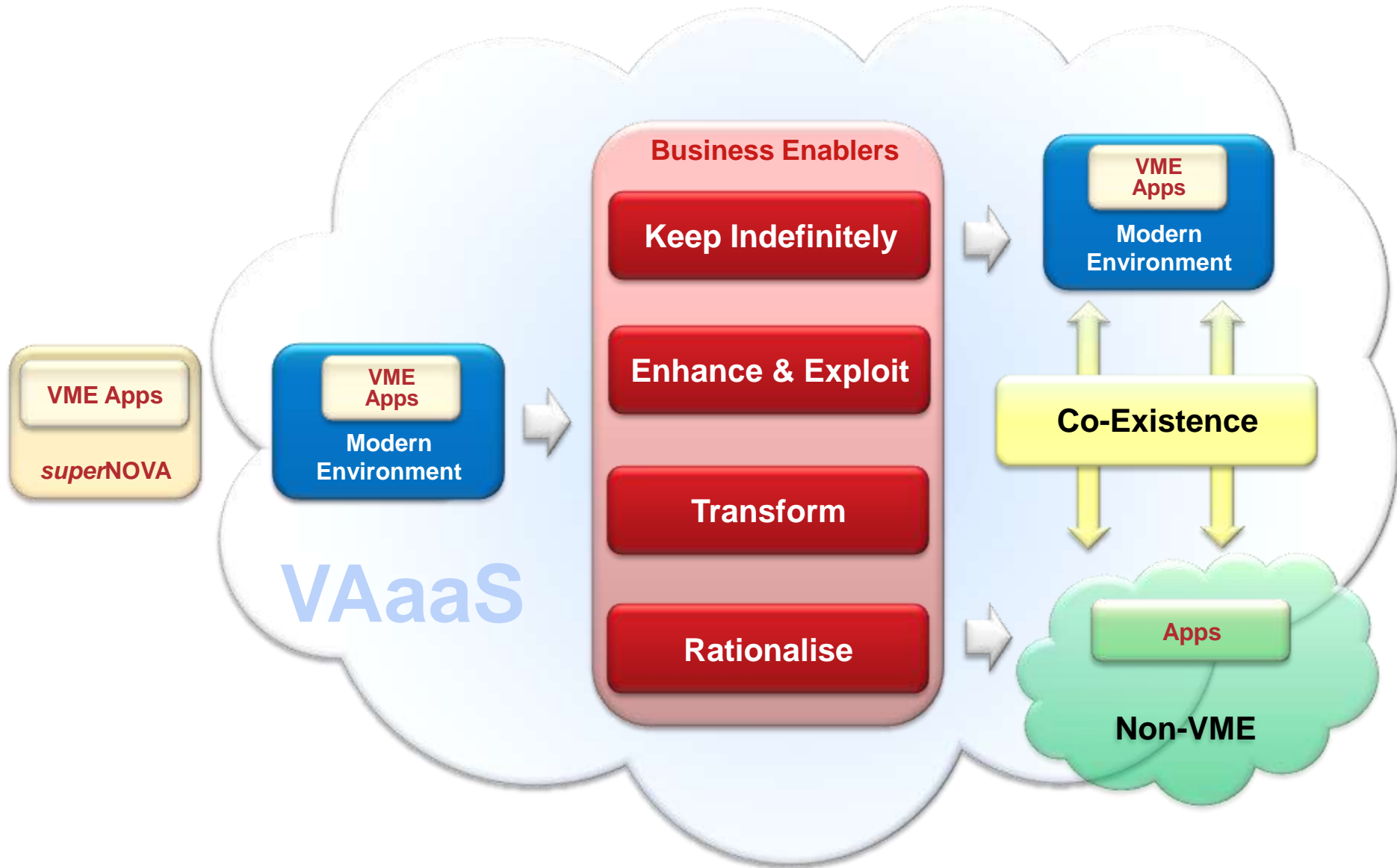
- Data Integration

- IDMS Data Off-Load to Relational
- VME Applications to Read/Update Relational
- TIES Exploitation





VAaaS enables choice





VAaaS

CHOICE

VME Applications forever

Modernise your environment

Migrate any/all off

Pace of change determined by business requirements

MINIMAL RISK

**IMPROVED
PRODUCTIVITY**

**IMPROVED
AGILITY**

LONGEVITY

VAaaS

CHOICE

Seamless change

Co-existence

Parallel running

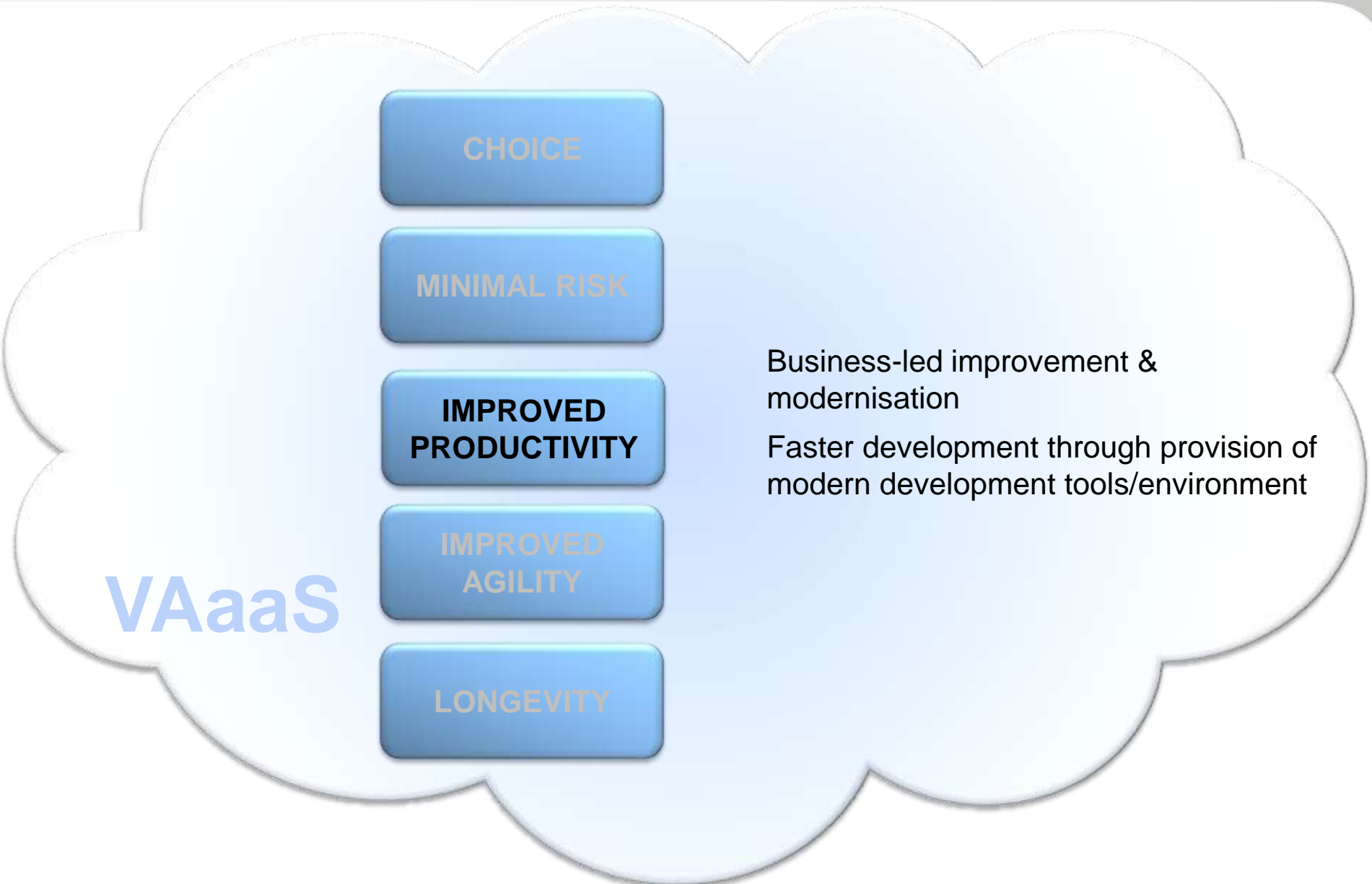
Gradual migration rather than expensive, high risk 'big bang'

MINIMAL RISK

IMPROVED
PRODUCTIVITY

IMPROVED
AGILITY

LONGEVITY



VAaaS

CHOICE

MINIMAL RISK

IMPROVED
PRODUCTIVITY

IMPROVED
AGILITY

LONGEVITY

Increased responsiveness
Transformation in line with Business
needs

VAaaS

CHOICE

MINIMAL RISK

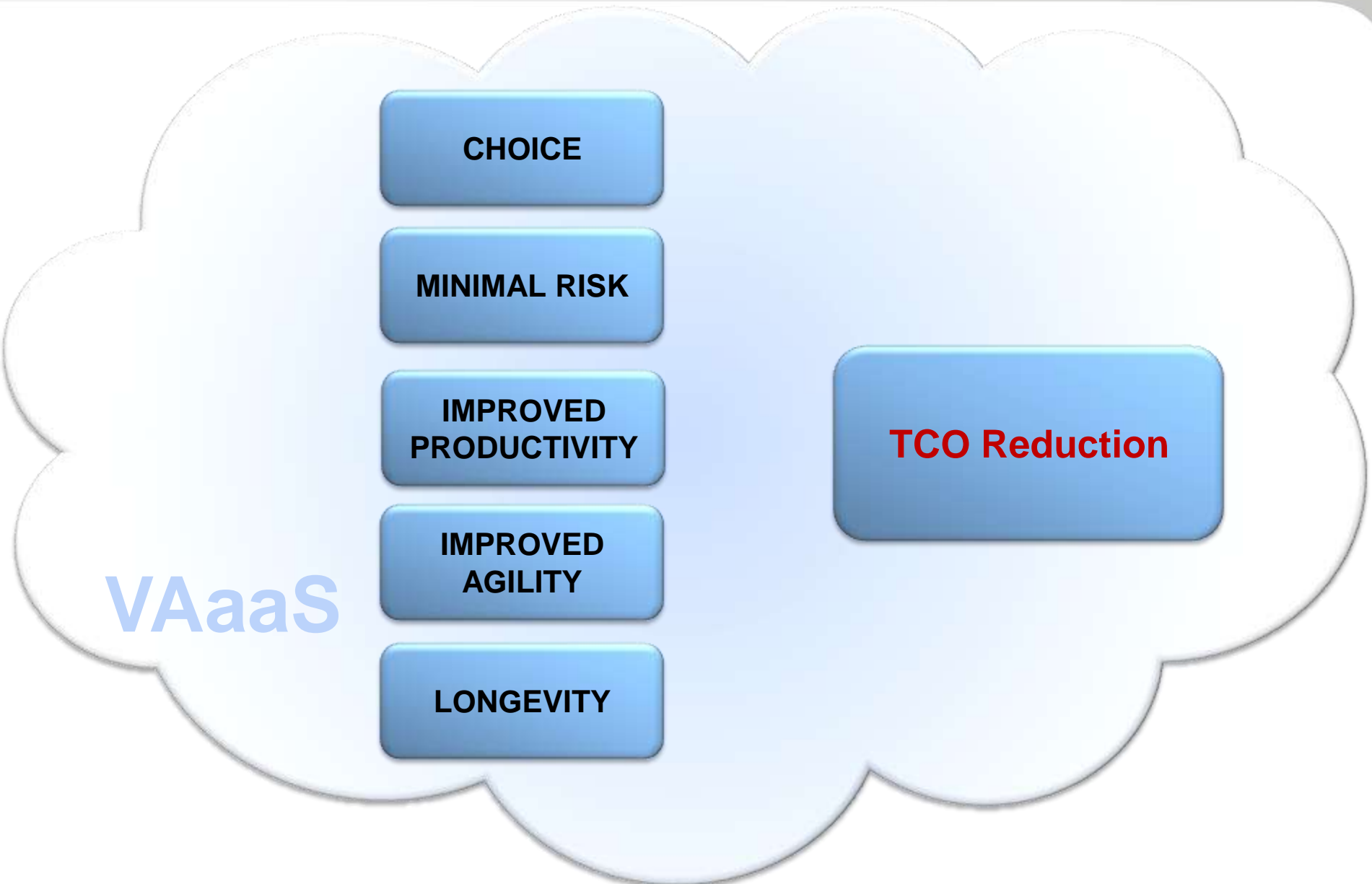
IMPROVED
PRODUCTIVITY

IMPROVED
AGILITY

LONGEVITY

VME Applications supported
for the long term (>2020)

Knowledge / skills transfer
addressing demographics

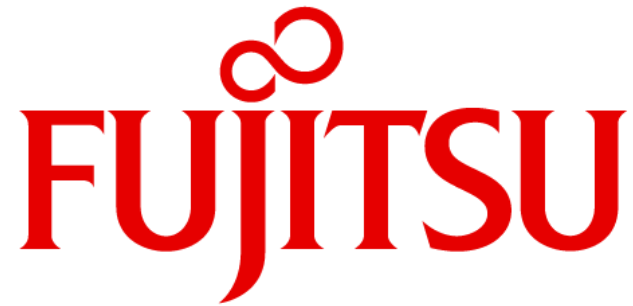


- Last year we stated that:
 - The VAaaS offer is our intended direction beyond 2020



VAaaS IS NOW AVAILABLE

- Fujitsu is investing and continues to invest in VME
 - For the Long term – VAaaS
 - For the Medium term – *super*NOVA and the VME OS
- The commitment to Support VME through to 2020 remains
 - Your Business is Secure in this environment
- VAaaS is Fujitsu's long term solution – through to beyond 2020
 - Your Business can benefit from long term security

The logo features a red infinity symbol positioned above the word "FUJITSU". The word "FUJITSU" is rendered in a bold, red, serif typeface. The infinity symbol is a simple, continuous loop.

shaping tomorrow with you