



# CWID

## UK DEMO No 36: openJOP

### Open Joint Operations Picture



### Description

This demonstration explores the potential for visualising and managing the Joint Operations Picture (JOP) information set using open standards and COTS products.

By building a JOP capability in this way, new information sources can be added, and existing source modified or removed, much more readily, thereby enabling the JOP views to be configured and re-configured in a truly dynamic manner to meet the needs of operational commanders.

At CWID, openJOP is integrated with the Accelerator toolset familiar to users in MOD Main Building, PJHQ, HQSTC and FLEET. Using this web-based interface, training needs are reduced, with management and maintenance in-theatre potentially handled by military personnel with a much lower dependency on Industry.

Behind the web front-end of the openJOP lie the components of Accelerator: Microsoft SharePoint Services, Meridio EDRMS and K2.Net process modelling and management tools. These ensure that, not only is a PRO-approved information repository available to provide, a common, shared information set, but that common processes are applied to the management and use of the information, bringing the collaborative, Shared Situational Awareness vision one step closer.

# FUJITSU

### FUJITSU IN DEFENCE

Fujitsu develops battle-winning capabilities for Defence and combines application and integration expertise with excellence in support.

Our approach to information management cuts through information overload and provides consistency across Front Line Commands, Joint operations from Main Building to Component Commanders and beyond.

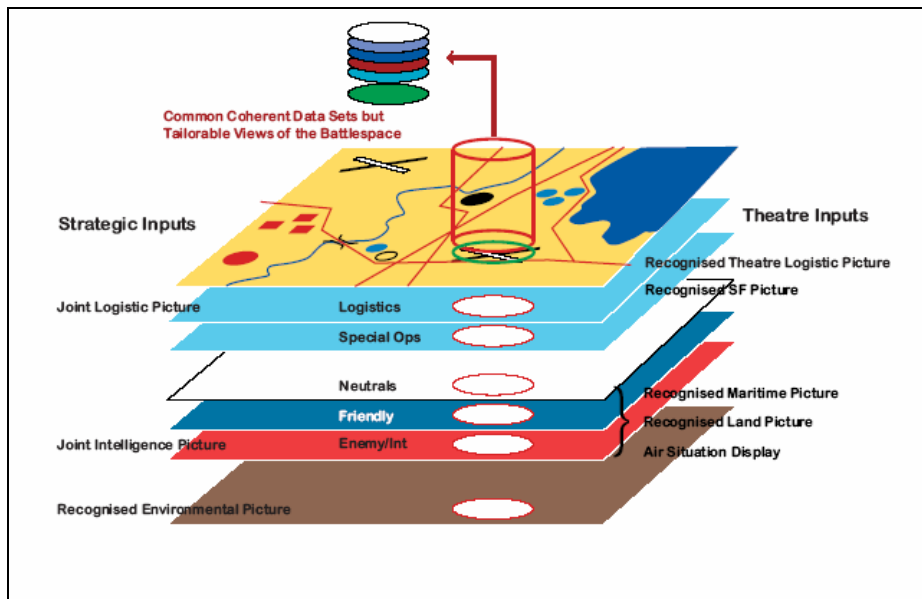
Fujitsu IT meets the needs of warfighters from early-entry, rapidly deployable units to large, in-theatre Headquarters and across rear links to all Command Headquarters.

### ASK FUJITSU

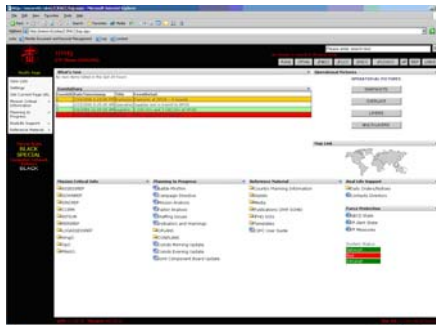
Contact us on +44 (0) 870 242 7998 or [askfujitsu@uk.fujitsu.com](mailto:askfujitsu@uk.fujitsu.com) or visit <http://uk.fujitsu.com>

## Capability

JSP777 defines the contents of the Joint Operations Picture as an information repository that can be regarded as a set of views' of the operational situation, with the Common Operating Picture as the dynamic theatre situational picture.



The JOP contents do not have to be a picture in the conventional sense. Much of the information in the JOP is textual or specially formatted and will not be a geospatial or pictorial element.



The familiar web-based interface gives the user an easy means of accessing the information he needs based on the role he has in the operation. Standard features, such as a message ticker tape and 'what's new' buttons are provided to enable rapid access to information in a rapidly changing operational environment.

## INFORMATION SOURCES

In the CWID scenario the information feeds to the openJOP are from other trials and from Jane's Information Group, providing a repository of Open Source Intelligence data. The information feeds from other trials are provided using established, and experimental, interfaces and technologies.

However, in order to show that current operational capabilities fit well with the openJOP concept, Fujitsu has worked with BAE SYSTEMS to host the Recognised Theatre Logistic Picture (RTLTP) provided by JCS(Log).

BAE Systems' JCS(Log) is in service providing joint operational logistic staff with shared situational awareness, integrating logistical data from disparate sources and displaying it in the Recognised Theatre Logistic Picture (RTLTP).

## ACKNOWLEDGEMENTS

Fujitsu would like to thank the following organisations for their contributions to this demonstration:

**BAE SYSTEMS**

