

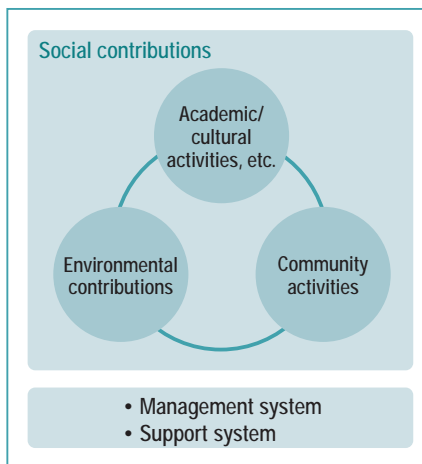
Social Contribution Activities

Maintaining a harmonious relationship as a good corporate citizen of our local communities and society at large. This is a primary motivation for the Fujitsu Group.

Policy

We strive, in conformance with the goals of "The FUJITSU Way," for coexistence and co-prosperity with international society and local communities as a good corporate citizen. We also contribute to society through activities drawing on our strengths as an IT corporation.

Structure



1. Academic/cultural activities, etc.

We have established a promotional division for each measure and are conducting relevant activities.

2. Environmental contributions

We strive to promote environmental social contribution activities led by the Corporate Environmental Affairs Group.

3. Regional contributions

Activities are conducted under the leadership of the various plant and regional promotional divisions. We have established local

contribution activities at our nationwide branches and system laboratories as an environmental target of our integrated EMS. We also promote local contribution activities at our sales/software services division sites nationwide in addition to our conventional plants.

4. Support systems

We have systems in place to support volunteer activities by employees.

- Leave system for employees wishing to participate in Japan Overseas Cooperation Volunteers programs: Maximum 3 years
- Accrual leave: 5 days annually, accrual of up to 20 days

Results

Promotion of academic endeavors and education/international exchange

Japan America Institute of Management Science (JAIMS) (established 1972)

This institute was established as a nonprofit educational corporation approved by the State of Hawaii Department of Education to improve mutual understanding among businesspeople in Pacific Rim countries. It pursues education and research concerning



A lecture in progress

management thinking and techniques with a focus on Japan and the United States.

Foundation for International Information-processing Education (FINIPED) (established 1972)

This foundation was established by the Fujitsu Group to encourage human resources cultivation concerning information processing in Japan and other countries. With the participation of a membership comprising approximately 170 companies in various

fields, it provides assistance for students receiving education and training at JAIMS as well as at universities in Japan and overseas.

Fujitsu Asia Pacific Scholarship System (established 1985)

This scholarship program for students and businesspeople in Asian Pacific countries was founded at the time of the 50th anniversary of Fujitsu's establishment. Its aim is to provide them with opportunities to study management and culture in Japan, the United States and China and to deepen their understanding of other nations' value systems.

Support for Mathematical Olympiad Foundation

The Mathematical Olympiad Foundation of Japan selects and dispatches Japan's representatives to international mathematics Olympic competitions. The 44th IMO competition was held in Japan from July 7 to 19, 2003, with Fujitsu providing full support as the organization's main sponsor.



Conducting the International Mathematics Olympics 2003 (Japan)

Culture/arts activities

Co-sponsorship of cultural, art and sports programs

- Musical performances (Tsukuba Concert, Fujitsu Concert, others.)
- Sports events (Fujitsu Ladies Golf Tournament, others)
- Go/shogi competitions (World Go Championship Fujitsu Cup, Honinbo Game, Fujitsu Cup Master's Game, others)

Corporate sports

We field consistently competitive track and field, American football and women's basketball teams.

Official sponsorship of Kawasaki Frontale

Based in the city of Kawasaki, the Kawasaki Frontale team joined Japan's J-League professional soccer league in 1999. It has concentrated since on developing professional soccer, training young local athletes and encouraging sports development in general.



©KAWASAKI FRONTALE 2004

Environmental Contribution Activities

From enlightenment to implementation. We are conducting voluntary activities carefully considering society as a whole and our surrounding communities.

Cooperation with educational institutions

Musashi Institute of Technology Internship "Onkochishin" ("Learn the lessons of the past")

We conduct joint research with the students of Musashi Institute of Technology under a practical training internship project. In 2003, the second year of the project, we investigated Rakugo [Japanese comic storytelling] stories describing the life of people in the cyclical society of the Edo period and examined the issues that are relevant for our age. This led to our presentation at the Eco-Products Exhibition 2003 of a "New Edo System" exhibit considering the disposable society and examining the importance of repairing, restoring and recognizing the value of goods.



Presentation of joint research results at Eco-Products 2003

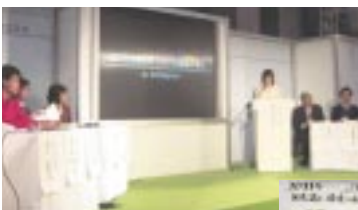
"New Edo System" introduction pamphlet



Collaboration with NGOs/NPOs Joint business with NPO at Eco-Products 2003 (collaboration with NACS*)

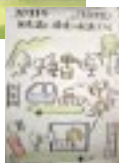
Envisioning life in 2033 at Eco-Products 2003
We participated in a panel discussion, "Vision for 2033 and Our Lives," sponsored by the Kanagawa Agenda Promotion Center (Kanagawa Prefecture Global Warming Prevention Activities Promotion Center), an incorporated nonprofit organization. Every proposal from corporations, NPOs and high schools was considered in envisioning the future society together.

* NACS: Nippon Association of Consumer Specialists



Envisioning life in 2033 at Eco-Products 2003

Technologies realizing the vision of "unconscious environmental consideration"



Lesson support activities for educational institutions

We support integrated environmental studies from elementary to high school under an original program in our capacity as a corporation employing new eco-friendly materials, research and product development. Students use actual products to study the relationship between parts and the global environment.



Sapporo City Ainosato-Higashi Elementary School
3rd Educational Practice Presentation Meeting

Graduate School of Information Science and Engineering, Tokyo Institute of Technology

We cooperate with the Technology Management Program Development Committee of the Kinji Mori Laboratory. In an MOT (management of technology) project

Eco-Products 2003 preliminary lesson

We participated in an integrated lesson sponsored by NACS for first-year students of the Tokyo Metropolitan Edogawa High School. We introduced PC recycling and a PC employing new materials.



Integrated lesson at Tokyo Metropolitan Edogawa High School in session (Eco-Products 2003 preliminary lesson sponsored by NACS)

OISCA-International Children's Forest Program

We have begun providing the Rhythm Forest network game to support the Children's Forest Program forestation projects promoted by OISCA-International. The service was established jointly by Fujitsu, Nifty Corporation and Photon, Inc. A session in a virtual world with visual and sound content leads to actual forestation activities, as monthly player results are converted into numbers of seedlings. Frequent access in fiscal 2003 led to extensive tree-planting activities.



A leading-edge MOT IT lecture at Tokyo Institute of Technology

entitled "Fujitsu Sustainable Management Strategy Report," the graduate students studied Fujitsu Group environmental management deploying advanced IT as a case study and suggested future corporate modality and improvement measures.

College of Science and Engineering, Ritsumeikan University

A lecture entitled "The Environment and Corporate Activities" we presented as part of an IT Leading Edge course conducted by Japan Electronics and Information Technology Industries Association (JEITA) introduced corporate activities toward sustainable development of society and the possibilities for using IT to improve the global environment. The approximately 380 participating students expressed understanding of the importance of environmental activities.

Other cooperation organizations

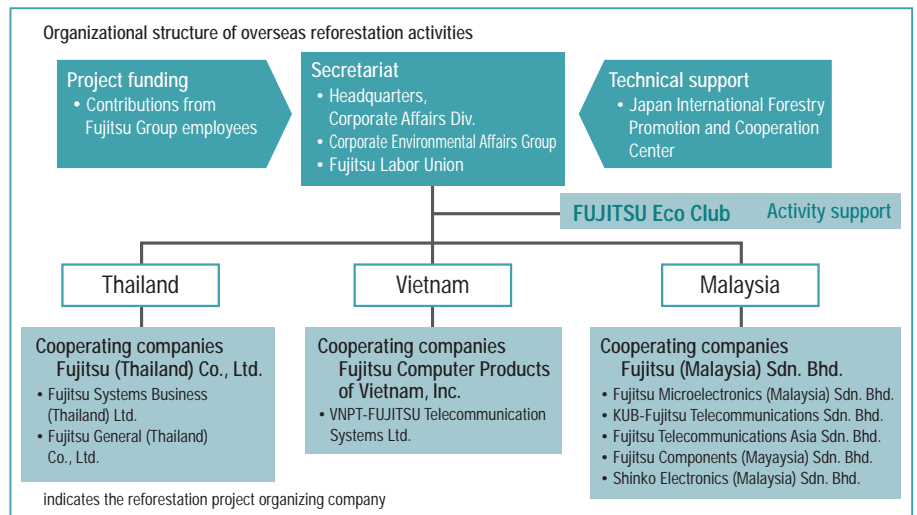
- Network for Environmental Reporting
- Nippon Environment Club
- Japan Environmental Management Association for Industry
- Environmental Preservation Committee, Communications and Information Network Association of Japan
- Japan Electronics and Information Technology Industries Association
- Clean Japan Center
- Nippon Keidanren
- Japan International Forestry Promotion and Cooperation Center
- Japan Machinery Center for Trade and Investment
- Environmental Partnership Organizing Club (Nagoya EPOC)
- National Land Afforestation Promotion Organization
- Akita University

Overseas Reforestation Activities

Volunteer tree-planting at Fujitsu Group Malaysia Eco Forest Park

Since fiscal 1998, the Fujitsu Group has engaged in forestation work in Thailand, Vietnam and Malaysia. In 2003, we created an eco-forest park in Malaysia and launched a three-year project involving planting of 40,000 Dipterocarpaceas trees on an area of about 70 hectares. In January 2004, volunteers from the Fujitsu Group participated in a tree-planting activity conducted under the third forestation project. Administration of the park will be transferred to the Sabah Forestry Development Authority in fiscal 2005 for use in environmental studies and eco-tourism.

The project is being conducted in cooperation with the Malaysian government, the Japanese Embassy in Kota Kinabalu, Japan International Cooperation Agency (JICA) and the Japan International Forestry Promotion and Cooperation Center, Japan, from the perspective of biodiversity greenification — restoration of denuded land to a state of ecosystem symbiosis by bringing back rich greenery. It is distinguished by collaborative work enlisting



the cooperation of the Fujitsu Labor Union to permit local employees and employees from Japan to participate voluntarily at the sites of Fujitsu Group companies. Fujitsu Thailand was honored by the Kingdom of Thailand in fiscal 2003 for its tree-planting activities and its continued conservation efforts following the planting.



Regional Contribution Activities

A variety of activities for communication with local residents and volunteer work are carried out by our plants and business offices.

Communication with local communities

Spring Festival, Kawasaki Research & Manufacturing Facilities

This annual festival, held for the ninth time in 2004, welcomed a crowd of 4,700 comprising Fujitsu employees, their families and neighborhood residents.

employees and their families at the plant, where activities such as a plant tour and chemical experiments designed to promote understanding of the plant's operation were organized. Some 2,500 visitors took part.



2003 Fujitsu Akiruno Festa, Fujitsu Akiruno Technology Center

This annual event has been staged since 2001, when the Center celebrated the first anniversary of its founding, to express appreciation of its employees and their families and promote cooperation with the local community. The 2003 festival attracted an enthusiastic crowd of some 4,000 visitors.

Regional voluntary activities

Personal Computer Workshop for the Physically Challenged, Tokai Area Fujitsu Group

This workshop has been offered annually since 2000 as a volunteer activity targeting the physically challenged. Three workshops with a total of 96 participants were held in 2003.



Fujitsu Nagano Plant Thank You Day, Nagano Plant

As part of efforts to ensure harmony with the community in which it operates, the Nagano Plant invited neighborhood residents to join

Pasovora (Personal Computer Volunteer) Club, Fujitsu Info Software Technologies

Established in 2001, this club has sponsored various support programs designed to teach elderly and physically challenged residents of Shizuoka Prefecture to operate PCs and other IT devices. The club also operates a home page, "e-switch," to assist welfare organizations in Shizuoka Prefecture in disseminating information.



The "e-switch" homepage supporting welfare organizations

Dispatch of instructors to regional organizations (Yamagata Fujitsu)

As part of an information-sharing effort close to the local community, Fujitsu Yamagata held lectures for local governmental bodies and companies on the subjects of zero emission activities and environmental conservation measures for implementation at plants.



A lecture on implementing environmental preservation activities

Clean hiking (Fujitsu Ten)

141 employees and their families picked up litter along a hiking trail on Mt. Rokko, a mountain near the Headquarters plant. Other Fujitsu plants also stage local area clean-ups, in which employees and their families as well as partner companies join the clean-up activities of local residents.



Hiking and litter collection on Mt. Rokko

Supporting park improvement (Fujitsu Support and Services (Fsas))

The company participated in a Yumemigasaki Park Improvement activity conducted by residents of Kawasaki's Saiwai Ward. Twenty participants tended the flower garden bordering paths in the park. Many other Fsas branches and offices also participate in clean-ups in their local communities.



Beautifying Kawasaki's Yumemigasaki Park

Activities at branch offices and system laboratories (fiscal 2003)

Japanese Red Cross Society blood donations (Hokkaido Branch, Kawasaki Research & Manufacturing Facilities, Numazu Plant and others)

These facilities cooperate in blood donation drives by issuing appeals for blood donors among employees.

Spectator fair at New Year Ekiden [relay race] (Kan'etsu local office)

The Kan'etsu local office staged a cheering

fair near the third relay point in the All Japan Inter-Business Organization Ekiden (New Year Ekiden), where it treated grateful spectators to miso soup with pork and vegetables and amazake ("sweet sake," a beverage made from fermented rice).

Employees picked up the litter after the race.

Activities at overseas bases

Regional afforestation (FCPP (Philippines))

Fujitsu Computer Products Corporation of the Philippines cooperated with the ABS-CBN Bantay Kalikasan Foundation, a nature

conservation arm of the ABS-CBN Broadcasting Network, in donating 100 trees in August 2003 to be planted in the area around LA Mesa (Lake Mesa) in Quezon City. Fifteen FCPP employees participated in the planting.



Sites nationwide of sales/software services divisions participated in community-based activities in addition to usual plant/laboratory activities.

Participation in local cleanup activities (examples)

Regional office/branch	Participation/venue	
Hokkaido region Asahikawa Branch	Asahikawa City (Kaimono Park)	
Tohoku region Tohoku Sales Div., Aomori Branch, Iwate Branch, Aizu Branch, Fukushima Branch, Hachinohe Sales Office, Iwaki Sales Office, Koriyama Sales Office	Hachinohe City (Miyagi Park), Morioka City (Kaiunbashi-Asahibashi, both sides of Kitakami River riverbed), Akita City (Senshu Park), Yamagata City (periphery of Kajo Park baseball field), Koriyama City (Fukushima Station vicinity), Iwaki City (Shinkawahigashi green belt), Aizuwakamatsu City (Omachi Central Park)	
Kan'etsu region Kanagawa Sales Div., Chiba Sales Div., Makuhari System Laboratory, Nagano Sales Div.	Kanagawa Prefecture (Misaki Park), Chiba Prefecture (Chiba Port Park, Kaihin-Makuhari), Nagano Prefecture (vicinities of Nagano and Suzaka stations)	
Tokai region Shizuoka Sales Div.	Numazu City (Katahama Beach)	
Hokuriku region Hokuriku Sales Div.	Ishikawa Prefecture (Shiroo Beach)	
Kansai region Western-Japan Regional Sales Group, Shiga Branch, Himeji Branch	Osaka City (periphery of Okawa), Shiga Prefecture (Biwako-Nagisa Park), Himeji City (Minami Station vicinity)	
Chugoku/Shikoku region Chugoku Sales Div., Shikoku Sales Div.	Tottori Prefecture (Tottori Dunes), Okayama City (Ashida River, Fukuyama Station vicinity), Hiroshima City (Heiwa Blvd., both sides of Kyobashi River riverbed), Takamatsu City (along Chuo-dori Ave.)	
Kyushu region Kyushu Sales Div., Kyushu R&D Center, Kumamoto System Laboratory	Fukuoka City (Kushida Shrine, Fukuoka), Kumamoto Prefecture (Techno Research Park)	