

THE POSSIBILITIES ARE INFINITE



LifeBook P1610

Optional Accessories



Memory Modules

1GB DDR2 533MHz
512MB DDR2 533MHz

FPCEM315
FPCEM314

External Drives

USB Floppy Disk Drive
USB Combo Drive

FPCFDD16
FPCDVR42

Display Option

17" TFT LCD

PD-TFT17C

Carrying Cases

Carrier Case
Fujitsu Backpack (Black/ Green)

PG30027
HACAS0006-00

Power Options

AC Adapter (16V 40W)
AC Adapter (16V 60W)
Battery Charger
Battery - Standard (3-cell Li-Ion 2600mAh 10.8V)
Battery - Extended (6-cell Li-Ion 5200mAh 10.8V)

FPCAC43
FPCAC45
FPCBC22
FPCBP163Z
FPCBP164Z

Docking Option

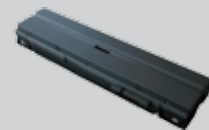
Port Replicator

FPCPR56

Others

Stylus Pen (Pack of 2)
USB Optical Scroll Mouse (Translucent)
Dicota Notebook Cable Lock
Dicota Notebook Combination Lock
Universal Travel Adapter - NA for AU/ NZ

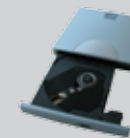
FPCPN18AP
HLMSE0002-00
HACCE0001-00
HACCE0002-00
HLADP0001-00



Extended Battery



Port Replicator



USB Combo Drive



USB Optical Scroll Mouse

LIFEBOOK

Some pictures are expressed in creative manners which may differ from the actual unit. Please check with your local distributor on any specifics.

Part No: HLGUD0080-01-C