

PalmSecure™

Palm Vein Authentication System

Robust front-end biometric authentication for healthcare data and identity management

Improve patient security and privacy

An increasing number of patients are encountering an alarming trend where their confidentiality is being compromised. In order to circumvent this, the U.S. Congress has strongly recommended that medical organizations adopt an electronic medical record system. As an additional safeguard to patient privacy, the federal government is now regulating the protection of healthcare data. With the passage of the Health Insurance Portability and Accountability Act (HIPAA), medical personnel are now required to use two forms of authentication in order to access patient medical records and other sensitive data.

- ▶ Protect patient records while assisting with HIPAA regulatory compliance
- ▶ Improve patient services through enhancement of secured information sharing capabilities
- ▶ Reduce organizational expenses and administrative tasks
- ▶ Assist with combating healthcare insurance and billing fraud
- ▶ Easily integrate with existing software program
- ▶ Noninvasive, contactless and highly accurate biometric technology



The Fujitsu PalmSecure device is a logical solution for this situation. Since palm vein patterns are unique to each person, it is very difficult to forge an individual's identity. Also, because this innovative technology is highly accurate, healthcare systems are provided with an extra layer of necessary protection. With the sensor's high level of reliability, only appropriate personnel are allowed access to private medical files. Furthermore, usage of the PalmSecure sensor will help curb the disturbing increase in medical identity theft cases by helping to accurately verify patient identity.



THE POSSIBILITIES ARE INFINITE

Healthcare

Enhance quality of services

For many healthcare organizations, the ability to collaboratively share patient data and records has been a challenge. A solution is needed that will allow appropriate healthcare personnel to access confidential records, no matter where they are located.

Implementation of the Fujitsu PalmSecure technology will help increase secured information sharing throughout individual organizations. Utilization of the technology will allow for the development of multiple access points to resources on a secured basis, which will assist assigned healthcare staff with being kept properly informed about a patient's condition. In turn, this will help reduce medical errors caused by the insufficient management of patient identity and health records.

Increase cost-effectiveness and operational efficiency

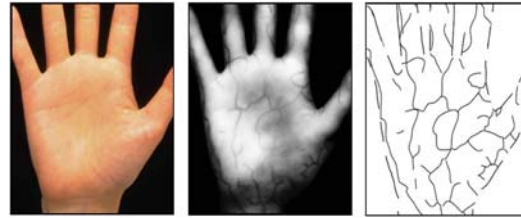
Like most other businesses, healthcare organizations are always looking for ways to streamline processes and reduce expenses. Cost-efficiency can be enhanced with the help of biometric authentication technology in a number of ways. Utilization of the PalmSecure sensor will help eliminate the need to memorize and enter long passwords. In addition, IT staff will no longer be tasked with managing and reissuing these passwords, thus allowing for greater operational efficiency and helping to reduce the strain on helpdesk resources.

Protect against fraudulent activities

Deployment of a biometric system such as the PalmSecure sensor will help protect against fraudulent insurance claims that may be initiated from an inside source. Requiring a biometric stamp on audited data ensures that the process will be secure, and provides an accurate trail to those involved in the procedure.

Easy and inexpensive to integrate

While medical facilities have been tasked with increasing protection of patient privacy, they must also remain conscious of limited resources. Therefore, for a new identity verification system to be successfully launched, it must be easily deployed into the existing legacy network, as well as inexpensive to maintain. This can be readily accomplished with the



Near-infrared palm vein image

PalmSecure sensor, as the system is designed to integrate with Windows®-based medical applications, user provisioning tools or enterprise single sign-on (E-SSO) solutions.

Reap the benefits of cutting-edge biometric technology

The award-winning Fujitsu PalmSecure device utilizes the latest in biometric security technology. Because its contactless authentication is hygienic and non-invasive, healthcare facilities can expect a high level of user acceptance from patients and medical staff alike. In addition, the sensor's high level of versatility makes it applicable to virtually all users. And most importantly, the high level of accuracy will help the healthcare industry comply with federally mandated regulations regarding the safety and protection of patients, staff, and the organizations as a whole.

About Fujitsu Computer Products of America, Inc.

Fujitsu Computer Products of America, Inc. is a subsidiary of Fujitsu Limited, a leading provider of customer-focused IT and communications solutions for the global marketplace. FCPA provides innovative solutions for the U.S. marketplace. Current product and service offerings include high performance hard disk drives, Magneto-Optical drives, scanners and scanner maintenance, palm vein recognition technology, 10Gb Ethernet switches and degaussers.



Fujitsu Computer Products of America, Inc.

<http://us.fujitsu.com/fcpa>

1255 East Arques Avenue, Sunnyvale, CA 94085-4701. (800) 626-4686 (408) 746-7000 info@fcpa.fujitsu.com

©2006 Fujitsu Computer Products of America, Inc. All rights reserved. Fujitsu and the Fujitsu logo are registered trademarks and The Possibilities are Infinite and PalmSecure are trademarks of Fujitsu Ltd. "Best of Innovations" logo is a trademark of the Consumer Electronics Association (CEA). The Innovation Design and Engineering Award is based upon descriptive materials submitted to the judges. CEA did not verify the accuracy of any submission or of any claims made and did not test the item to which the award was given. All other trademarks are the property of their respective owners.

All statements herein are valid only in the U.S. for U.S. residents, are based on normal operating conditions, are provided for informational purposes only, and are not intended to create any implied warranty of merchantability or fitness for a particular purpose. Fujitsu Computer Products of America, Inc. reserves the right to modify at any time without prior notice these statements, our products, their performance specifications, availability, price, and warranty and post-warranty programs.



THE POSSIBILITIES ARE INFINITE