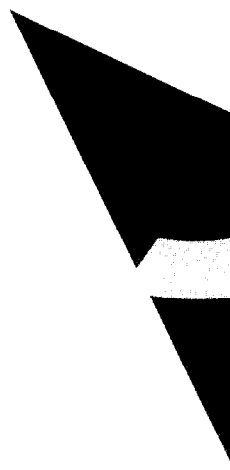


PrintPartner 14ADV

PAGE PRINTER

PARTS CATALOGUE





This document is used for maintenance purpose only.
The illustration of the part does not guarantee its availability.

**PrintPartner 14ADV
PAGE PRINTER
PARTS CATALOGUE**

FUJITSU LIMITED
Communications and Electronics
Tokyo, Japan



REVISION RECORD		
Edition	Date published	Revised contents
01	April 1997	First issue
Specification No. C145-G019-01EN		

The contents of this manual may be revised without prior notice.

All Right Reserved, Copyright © 1997 FUJITSU LIMITED. Printed In Japan.
No part of this manual may be reproduced In any form without permission.

Address your comments and inquiries on this manual to:

FUJITSU COMPUTER PRODUCTS OF AMERICA, INC.

2904 Orchard Parkway, San Jose
CA 95134-2022, U.S.A.
TEL:(1-408)432-6333
FAX:(1-408)894-1709

FUJITSU CANADA INC.

2800 Matheson Boulevard East
Mississauga, Ontario L4W 4X5,CANADA
TEL:(1-905)602-5454
FAX:(1-905)602-5457

FUJITSU AUSTRALIA LIMITED

475 Victoria Avenue, Chatswood
N.S.W., 2067, AUSTRALIA
TEL:(61-2)410-4555
FAX:(61-2)411-8603

FUJITSU DEUTSCHLAND AND GmbH

Frankfurter Ring 211
80807, München, F.R. GERMANY
TEL:(49-89)32378-0
FAX:(49-89)32378-100

FUJITSU ESPAÑA, S.A.

Almagro 40, 28009 Madrid, SPAIN
TEL:(34-1)581-8400
FAX:(34-1)581-8125

FUJITSU EUROPE LTD.

2 Longwalk Road, Stockly Park, Uxbridge
Middlesex UB11 1AB, ENGLAND
TEL:(44-81)573-4444
FAX:(44-81)573-2643

FUJITSU FRANCE S.A.

1, place des Etats-Unis Silic 310
94588 RUNGIS Cedex, FRANCE
TEL:(33-1)41-80-38-80
FAX:(33-1)41-80-38-66

FUJITSU HONG KONG LIMITED

Room 2521, Sun Hung Kai Centre
30 Harbour Road, HONG KONG
TEL:(852)827-5780
FAX:(852)827-4724

FUJITSU ICIM LTD.

Nagar Road, Pune 411 014, INDIA
TEL:(91-212)681-528
FAX:(91-212)680-238

FUJITSU ITALIA S.p.A.

Via Nazario Sauro, 38
20099 Sesto S, Giovanni(MI), ITALY
TEL:(39-2)26294-1
FAX:(39-2)26294-201

FUJITSU KOREA LTD.

9th Floor, Korean Reinsurance Bldg.
80, Susong-Dong, Chongro-Gu
Seoul Special City, Republic of KOREA
TEL:(82-2)739-3281
FAX:(82-2)739-3294

FUJITSU NORDIC AB

Kung Hans Väg 12
S-191 76 Sollentuna, SWEDEN
TEL:(46-8)626-6000
FAX:(46-8)626-6711

FUJITSU (SINGAPORE)PTE. LTD.

75 Science Park Drive
#02-06 CINTECH II, SINGAPORE 0511
TEL:(65)777-6577
FAX:(65)777-8794

FUJITSU SYSTEMS BUSINESS (MALAYSIA)SDN. BHD.

Fujitsu Plaza, 1A, Jalan Tandang 204
P.O. Box 636 Pejabat Pos Jalan Sultan
46770 Petaling Jaya
Selangor Darul Ehsan, MALAYSIA
TEL:(60-3)793-3888
FAX:(60-3)793-0888

FUJITSU SYSTEMS BUSINESS (THAILAND)LTD.

12th Floor, Olympia Thai Tower
444 Rachadapisek Road, Samsennok
Huaykwang, Bangkok 10310, THAILAND
TEL:(662)512-6066
FAX:(662)512-6068

FUJITSU TAIWAN LTD.

8th FL., NO.170, Hung Tai Center
Tun Hwa N.RD., Taipei, TAIWAN, R.O.C.
TEL:(886-2)545-7700
FAX:(886-2)717-4644

FUJITSU LIMITED

Computer Products Business Group
Kamikodanaka 4-1-1, Nakahara-ku
Kawasaki-shi 211, JAPAN
TEL:(81-44)754-8633
FAX:(81-44)754-8510

This is parts catalogue for PrintPartner 14ADV Page Printer.

This manual is for service engineers.

There are several models of PrintPartner 14ADV Page Printer.

This manual covers all models.

This manual consists of two part: Parts List and Parts Drawings.

Parts Lists has layer structure. You can find assembly levels.

Parts Drawings does not have the layer structure.

You can see the model difference from the parts list easily.

There are other manuals for service engineers as follows.

PrintPartner 14ADV Page Printer Maintenance Manual

PrintPartner 14ADV Page Printer Schematic Diagrams

PrintPartner 14ADV Page Printer User's Manual

PrintPartner 14ADV Page Printer Product Description

CONTENTS

1. HOW TO REFER TO THIS MANUAL	1 -1
2. SPECIFICATIONS	2 -1
3. PARTS LIST AND PARTS DRAWINGS OF PRINTER MECHANISM	3 -1
3. 1 Visual Index of Parts	3 -1
3. 2 Upper Cover	3 -2
3. 3 Printer	3 -4
3. 4 Printer Mech. Unit 1	3 -6
3. 5 Printer Mech. Unit 2	3 -8
3. 6 Base Frame	3 -12
3. 7 Laser Diode Stay	3 -14
3. 8 Power Unit	3 -16
3. 9 Heat Roller Unit	3 -18
3.10 Paper Tray	3 -20
3.11 Print Unit	3 -22
3.12 Cleaner	3 -24

1. HOW TO REFER TO THIS MANUAL

Example:

Index No.	Composition & Quantity				S P	Specification	Parts name (Description)	Remarks
1~42	1					CA04040-G102	BASE FRAME ASY	
1~24		1				CA04040-G103	BASE FRAME S ASY	
①—1			1			CA04040-G104	FRAME ASY	
2~6			1			CA04040-G260	M BRACKET ASY	
2				1	@	CA04040-G261	M BRACKET S ASY	
③—3				1	*	CA04040-0260	STEPPING MOTOR	
4				2	@	F6-SW2N3-06111	SCREW	
5				1	@	CA04040-Y263	GEAR V	
6				1	@	CA04040-Y265	GEAR W	
7		2			@	F6-SW2N3-06111	SCREW	
8		1			@	CA04040-Y267	GEAR X	
9		1			@	CA04040-Y269	GEAR Y	
10		1			@	CA04040-Y145	SENSOR LEVER	⑥
11~13		1				CA04040-G275	SIDE GUIDE L ASY	
11			1			CA04040-Y276	SIDE GUIDE L	
12			1			CA04040-Y277	RACK L	
13			1		@	F6-SN2TP3-05	TAPPING SCREW	
14~17		1				CA04040-G278	SIDE GUIDE R ASY	

②

- ① This figure shows the index number of the part in the drawing .
- ② These columns show the construction levels. A higher level part consists of the following lower level parts listed until the quantity of the next part appears at the same level. See example ③.
- ③ m-n shows an assembly or unit consisting of more than one part.
- ④ These parts are at the same level and belong to the same upper level part.
- ⑤ Parts with an asterisk(*) are recommended spare parts.
- ⑥ The Sensor Lever is the part name of the item number 10.
- ⑦ Parts with an at (@) can be bought.
Parts with no marks cannot be bought.
- * The Stepping Motor is a recommended spare part.

2. SPECIFICATIONS

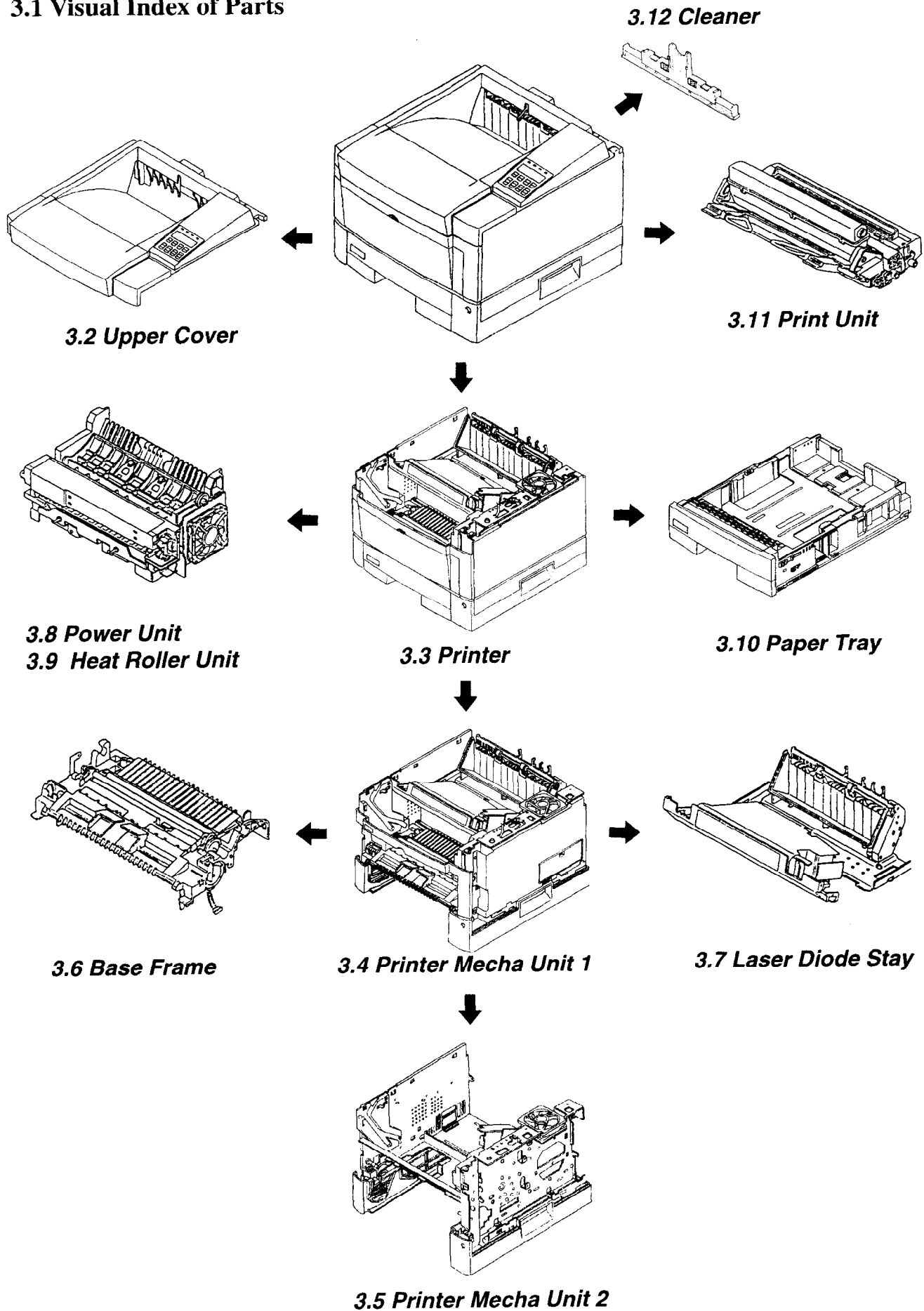
The table below lists standard models of the PrintPartner 14ADV printer.

No.	Specifications	Logo	AC	Remarks
1	CA04040-B500	PrintPartner 14ADV	120V	For North America, LETTER
2	CA04040-B511	PrintPartner 14ADV	↑	For FCI, CSA mark, LETTER
3	CA04040-B521	PrintPartner 14ADV	↑	For FCPA, UL mark, LETTER
4	CA04040-B531	PrintPartner 14ADV	↑	For Asia, A4
5	CA04040-B550	PrintPartner 14ADV	↑	For Europe, A4
6	CA04040-B555	T9014D	220-240V	For Tally (EU)
7	CA04040-B556	T9014D	↑	For Tally (UK)
8	CA04040-B561	PrintPartner 14ADV	↑	For FAL, A4
9	CA04040-B571	PrintPartner 14ADV	↑	For Asia, A4
10	CA04040-B581	PrintPartner 14ADV	↑	For Europe(*), A4
11	CA04040-B591	PrintPartner 14ADV	↑	No Brand, A4
12	CA04040-B596	PrintPartner 14ADV	↑	For Europe(Drop-Ship), A4
13				
14				
15				

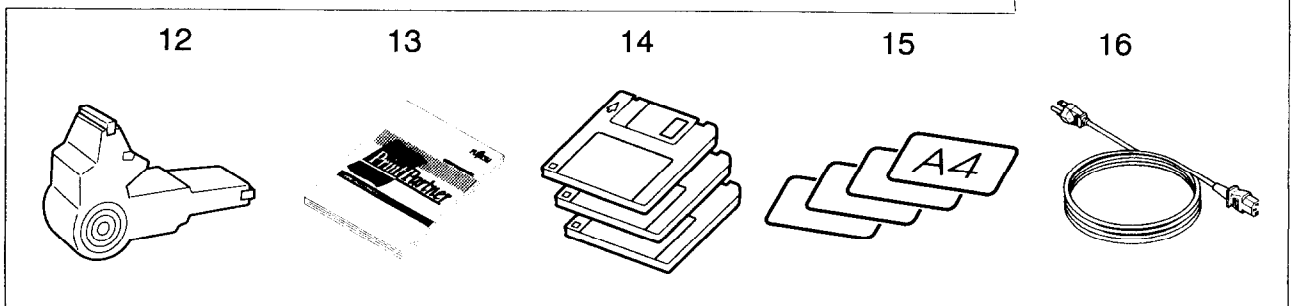
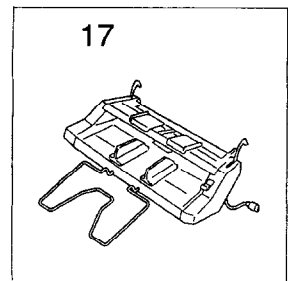
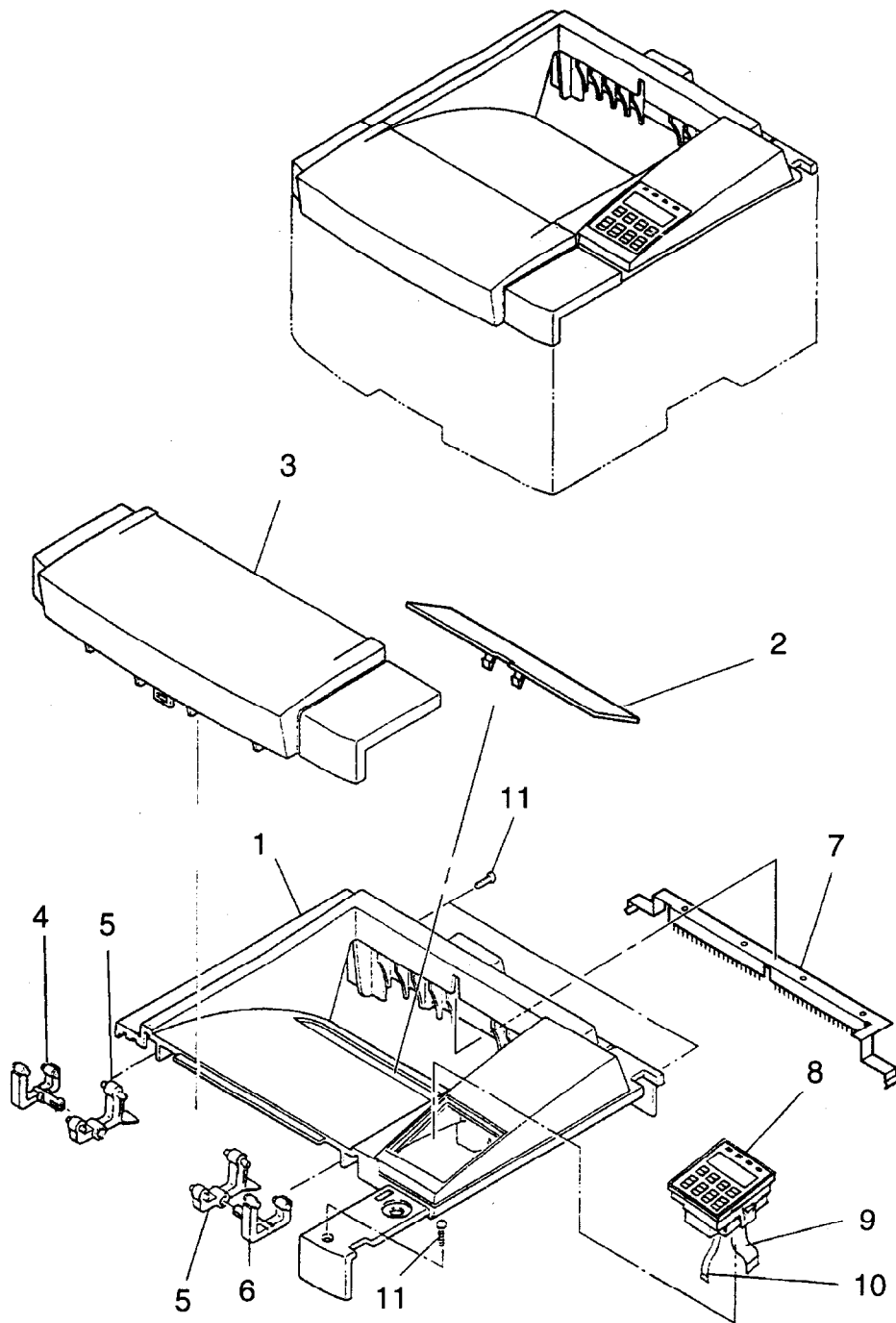
* User's manual and power cord are specified as the local kit.

3. PARTS LIST AND PARTS DRAWING OF PRINTER MECHANISM

3.1 Visual Index of Parts



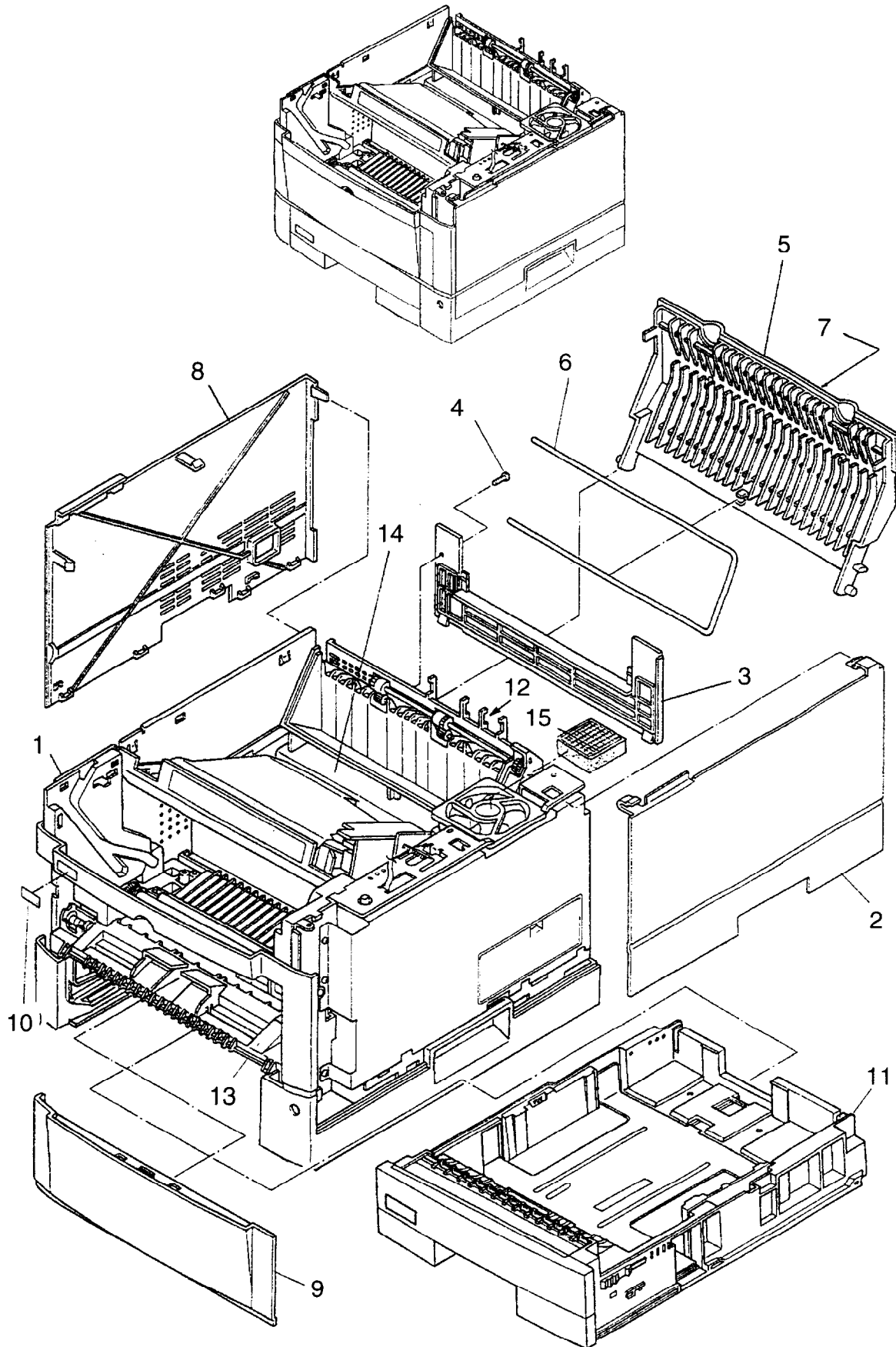
3.2 Upper Cover



3.2 Upper Cover

Index No.	Composition & Quantity				S P	Specification	Parts name (Description)	AC(V)		Remarks
								120	220 ~240	
	1					CA04040-B500	PP14ADV(120V)	○		North America
	1					CA04040-B511	PP14ADV(120V)	○		For FCI
	1					CA04040-B521	PP14ADV(120V)	○		For FCPA
	1					CA04040-B531	PP14ADV(120V)	○		For Asia
	1					CA04040-B550	PP14ADV(220-240V)		○	For Europa
	1					CA04040-B555	T9014D		○	For Tally(EU)
	1					CA04040-B556	T9014D		○	For Tally(UK)
	1					CA04040-B561	PP14ADV(220-240V)		○	For FAL
	1					CA04040-B571	PP14ADV(220-240V)		○	For Asia
	1					CA04040-B581	PP14ADV(220-240V)		○	For Europa (Country Kit)
	1					CA04040-B591	PP14ADV(220-240V)		○	No Brand
	1					CA04040-B596	PP14ADV(220-240V)		○	For Europa (Drop ship)
1~10		1				CA04040-F552	UPPER COVER ASY	○	○	
1~ 7			1		*	CA04040-G551	U COVER SUB ASY	○	○	
1				1	@	CA04040-Y550	UPPER COVER	○	○	
2				1	@	CA04040-G562	SHADE COVER ASY	○	○	
3				1	@	CA02758-Y803	UPPER DOOR	○	○	
4				1	@	CA02758-Y805	UD GUIDE L	○	○	
5				2	@	CA02758-Y806	UD GUIDE R	○	○	
6				1	@	CA02758-Y807	UD GUIDE LL	○	○	
7				1	@	CA04040-G539	DCH FRAME ASY	○	○	
8			1		*	CA04040-O574	OP PANEL	○	○	
9			1		@	CA04040-Y564	OP CABLE	○	○	
10			1		@	CA04040-Y573	VOLUME CABLE	○	○	
11			3		@	F6-SBD3-06121	BINDING HEAD SCREW	○	○	
	1					CA04040-K500	ACCESSORIES	○		North America
	1					CA04040-K511	ACCESSORIES	○		For FCI
	1					CA04040-K531	ACCESSORIES	○		For Asia
	1					CA04040-K550	ACCESSORIES		○	For Europa
	1					CA04040-K555	ACCESSORIES		○	For Tally(EU)
	1					CA04040-K556	ACCESSORIES		○	For Tally(UK)
	1					CA04040-K561	ACCESSORIES		○	For FAL
	1					CA04040-K571	ACCESSORIES		○	For Asia
	1					CA04040-K581	ACCESSORIES		○	For Europa (Country Kit)
	1					CA04040-K591	ACCESSORIES		○	No Brand
	1					CA04040-K596	ACCESSORIES		○	For Europa (Drop ship)
12		1			@	CA02758-G461	CL BRUSH ASY	○	○	
13		1				C145-E172-EN	USER'S MANUAL	○	○	
14		1			@	CA04040-0905	PP MENU	○	○	
		1			@	CA04040-0906	Win3.1 DRIVER	○	○	
		1			@	CA04040-E909	MARKVISION	○	○	
15		1			@	CA02417-Y720	SIZE LABEL	○	○	A4
		1			@	CA02417-Y724	SIZE LABEL	○	○	LETTER
		1			@	CA02417-Y725	SIZE LABEL	○	○	EXECUTIVE
16		1			@	CA02758-0992	AC CORD SET	○		100-120V
		1			@	CA02758-0993	AC CORD SET		○	220-240V(EU)
		1			@	CA02758-0995	AC CORD SET		○	220-240V
		1			@	CA02758-0998	AC CORD SET		○	220-240V(UK)
17		1				CA02758-0880	MFF	○	○	

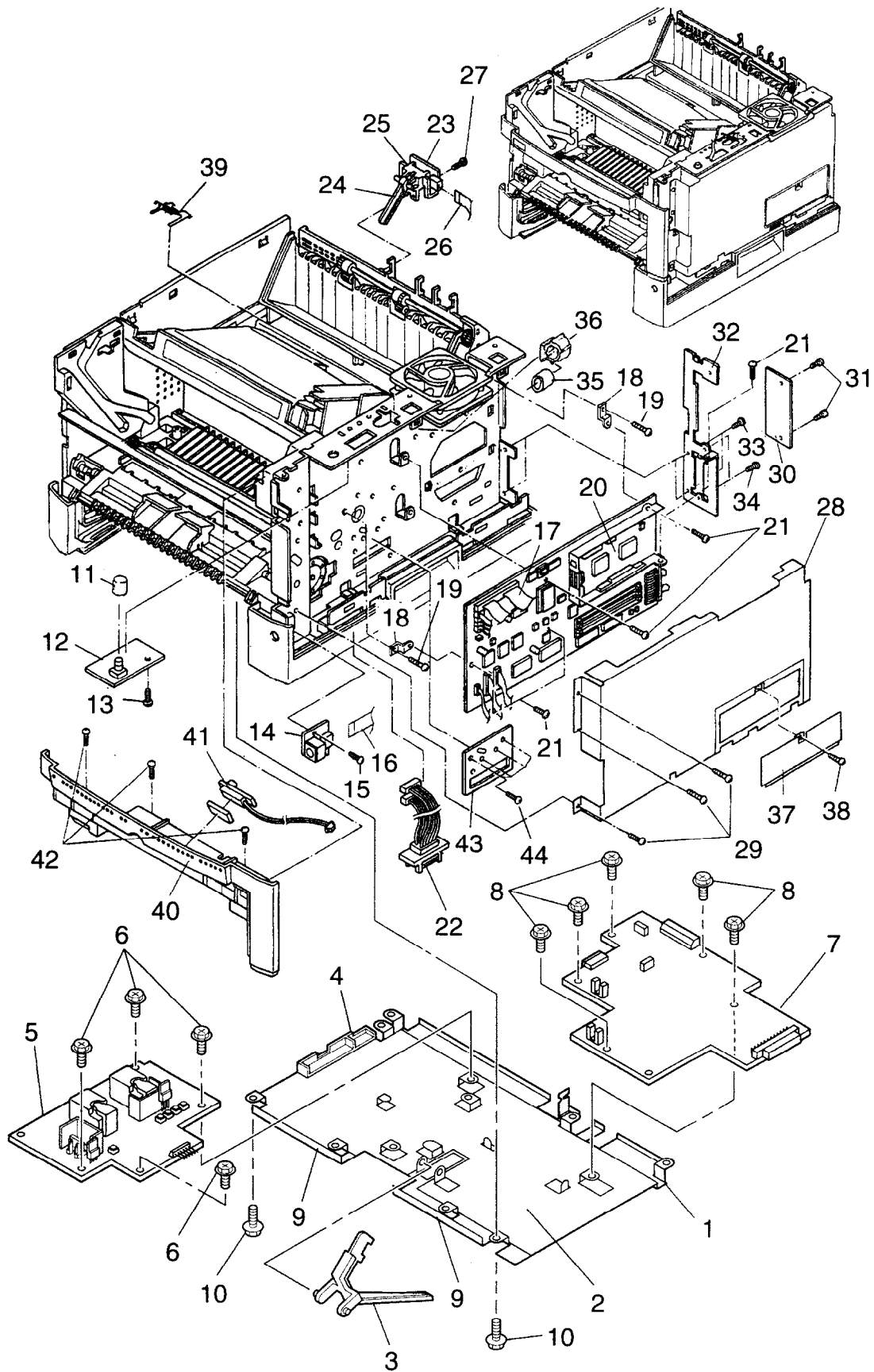
3.3 Printer



3.3 Printer

Index No.	Composition & Quantity				S P	Specification	Parts name (Description)	AC(V)		Remarks
								120	220 ~240	
1~14	1 1 1					CA04040-C500 CA04040-C531 CA04040-C550	PRINTER PRINTER PRINTER	○ ○ ○	○	120V, LETTER 120V, A4 220-240V, A4
1	1					CA04040-E500	MECH. UNIT	○	○	
2	1				@	CA02758-Y812	SIDE COVER R	○	○	
3	1				@	CA02758-Y814	BACK COVER	○	○	
4	1				@	F6-SBD3-06121	BINDING HEAD SCREW	○	○	
5~6	1					CA02758-G815	STACKER ASY	○	○	
5		1			@	CA02758-Y815	STACKER	○	○	
6			1		@	CA02758-Y816	REAR LABEL	○	○	
7	1				@	CA02758-Y818	S-LABEL	○	○	
8	1				@	CA02758-Y811	SIDE COVER L	○	○	
9	1				@	CA02758-Y813	FRONT COVER	○	○	
10	1 1				@ @	CA04040-Y854 CA04040-Y859	LOGO LABEL LOGO LABEL	○ ○	○ ○	For Tally
11	1 1					CA04040-F701 CA04040-F702	PAPER TRAY PAPER TRAY	○ ○	○ ○	A4 LETTER
12	1 1					CA04040-F544 CA04040-F545	POWER UNIT POWER UNIT	○ ○	○ ○	100-120V 220-240V
13	1					CA04040-F470	BASE FRAME ASY	○	○	
14	1					CA04040-G525	LD STAY ASY	○	○	
		7				CA02758-0195	TAPPING SCREW	○	○	
15	1				@	CA02758-0126	OZONE FILTER	○	○	
16	1				@	CA04040-G521	CLEANER	○	○	

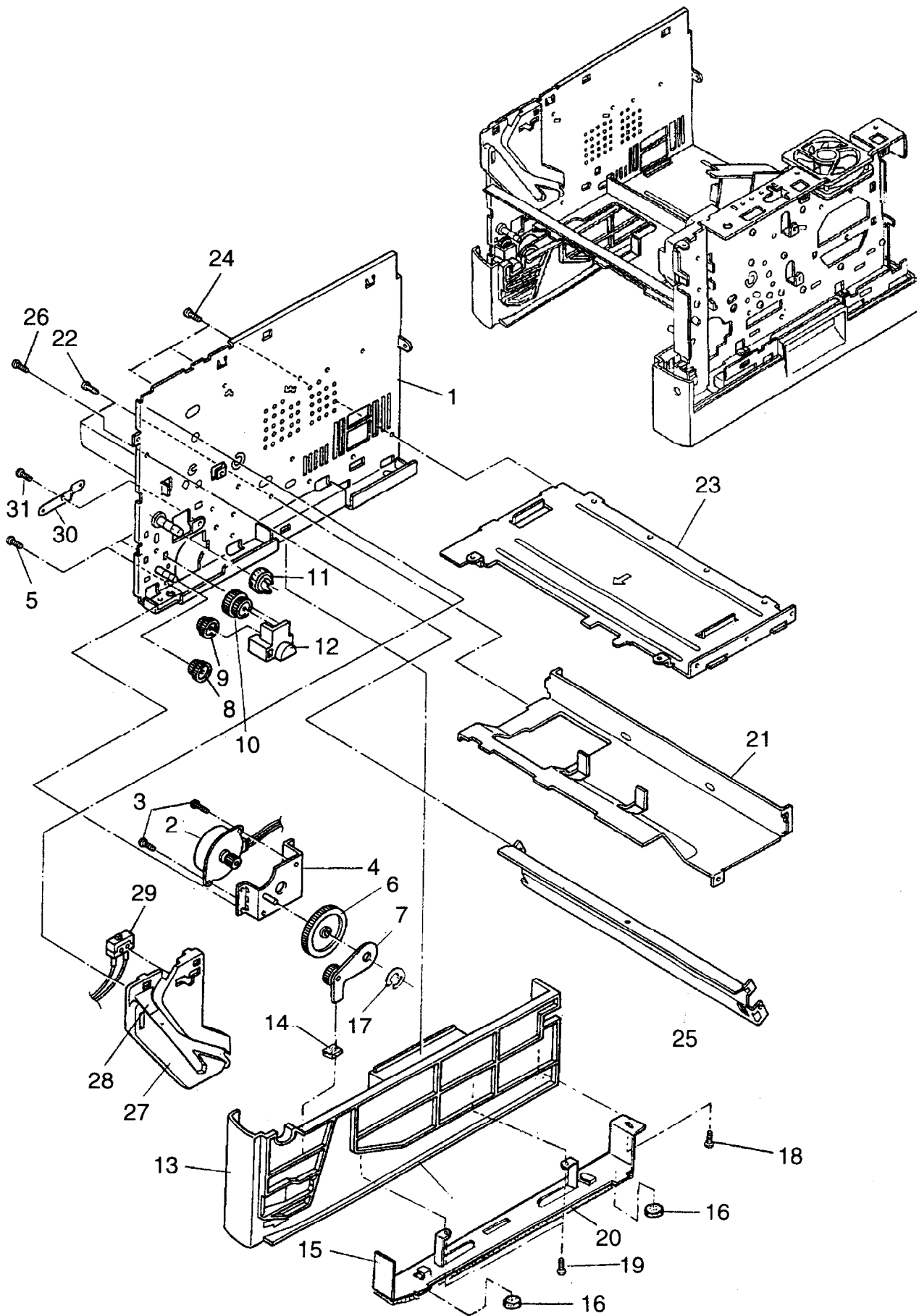
3.4 Printer Mecha Unit 1



3.4 Printer Mecha Unit 1

Index No.	Composition & Quantity			S P	Specification	Parts name (Description)	AC(V)		Remarks
							120	220-240	
1~9	1				CA02758-G149	HV UNIT	○	○	
1		1		@	CA02758-G150	BOARD COVER ASY	○	○	
2		1		@	CA02758-Z149	SHEET	○	○	
3		1		@	CA02758-Z651	PE LEVER	○	○	
4		1		@	CA02758-Z144	HV GUIDE	○	○	
5		1		*	CA02951-4291	HV BOARD	○	○	
6		4		@	CA02758-0195	TAPPING SCREW	○	○	
7		1		*	CA04040-G595	MECH BOARD	○	○	
8		5		@	CA02758-0195	TAPPING SCREW	○	○	
9		2		@	CA04040-Y598	SHEET P1	○	○	
10	4			@	F6-SW2N3-08111	SCREW	○	○	
11	1			@	D860-1173-X826	KNOB	○	○	
12	1			*	CA04040-G572	VOLUME BOARD	○	○	
13	2			@	CA02758-0195	TAPPING SCREW	○	○	
14	1			*	CA02758-G171	MFF BOARD	○	○	
15	1			@	F6-SBD3-06121	SCREW	○	○	
16	1			@	CA04040-Y568	MFF CABLE	○	○	
17	1			@	CA02758-Y122	LD CABLE	○	○	
18	2			@	CA04040-Y556	METAL FITTING	○	○	
19	2			@	F6-SW2N3-06121	SCREW	○	○	
20	1			*	CA04040-J500	ROM BOARD	○	○	
21	5			@	F6-SW2N3-08121	SCREW	○	○	
22	1			@	CA04040-F569	CABLE ASY	○	○	
23~25	1			*	CA02758-F695	SF SENSOR ASY	○	○	
23		1			CA02758-G696	SFS BOARD	○	○	
24		1			CA02758-Y696	SFS LEVER	○	○	
25		1			CA02758-Y697	SFS COVER	○	○	
26	1			@	CA02758-Y698	SFS CABLE	○	○	
27	1			@	F6-SN2TP3-06	TAPPING SCREW	○	○	
28	1			@	CA04040-G560	SHIELD ASY	○	○	
29	3			@	F6-SW2N3-08121	SCREW	○	○	
30	1			@	CA04040-Y552	SHADE PLATE B	○	○	
31	2			@	F6-SBD3-06121	SCREW	○	○	
32	1			@	CA04040-Y555	BACK COVER	○	○	
33	2			@	F6-SBD3-06121	SCREW	○	○	
34	2			@	F6-SW2N3-06121	SCREW	○	○	
35	1			@	CT-F3RH11.8-15-7.3	FELIGHT CORE	○	○	
36	1			@	CA98001-6702	CABLE CLUMP	○	○	
37	1			@	CA04040-Y561	SIMM COVER	○	○	
38	1			@	F6-SW2N3-06121	SCREW	○	○	
39	1			@	CA04040-Y580	FG SPRING PLATE	○	○	
40~41	1			@	CA02758-G817	FRONT FRAME ASY	○	○	
40		1			CA02758-Y817	FRONT FRAME	○	○	
41		1		@	CA02758-G360	TS ASY	○	○	
42	3			@	F6-SN2TP3-06	TAPPING SCREW	○	○	
43		1			CA02758-Y024	RF PLATE	○	○	
44		1			CA02758-0196	TAPPING SCREW	○	○	

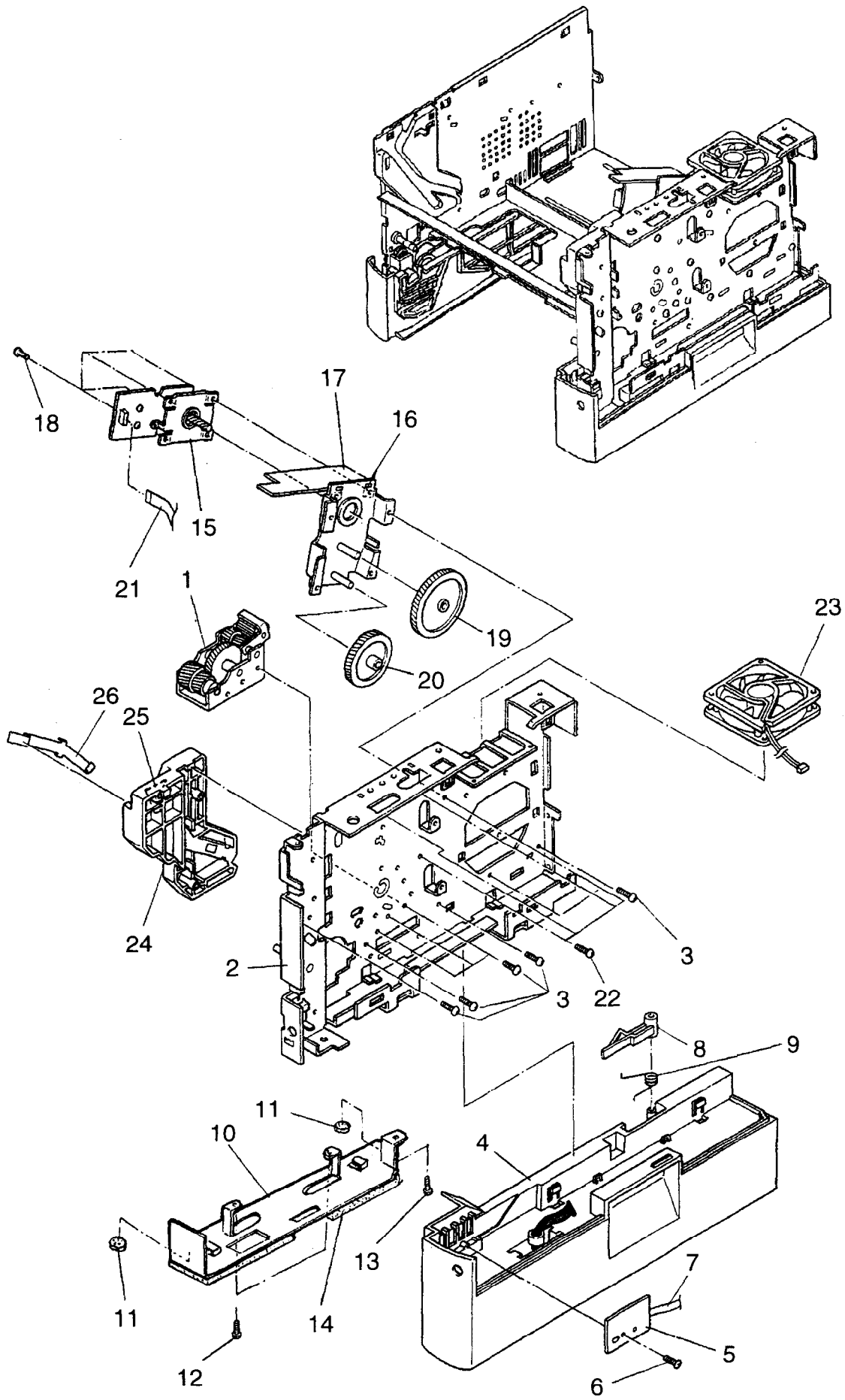
3.5 Printer Mecha Unit 2-1



3.5 Printer Mecha Unit 2-1

Index No.	Composition & Quantity				S P	Specification	Parts name (Description)	AC(V)		Remarks
								120	220 ~240	
1~20	1	1				CA04040-F113 CA02758-G111	FRAME L ASY FRAME L SUB ASY	○	○	
1								○	○	
2~4	1					CA02758-F201	P MOTER ASY	○	○	
2			1	*		CA02758-0201	PICK MOTOR	○	○	
3			2	@		F6-SW2N3-08111	SCREW	○	○	
4			1			CA02758-G202	PM BRACKET ASY	○	○	
5		3				CA02758-0198	TAPPING SCREW	○	○	
6		1		@		CA02758-Y204	GEAR P	○	○	
7		1		@		CA02758-G211	MFF GEAR A ASY	○	○	
8		1				CA02758-Y212	MFF GEAR B	○	○	
9		1				CA02758-Y213	MFF GEAR C	○	○	
10		1				CA02758-Y214	MFF GEAR D	○	○	
11		1				CA02758-Y215	MFF GEAR E	○	○	
12		1				CA02758-Y209	MFF GEAR BRACKET	○	○	
13~19	1			@		CA02758-G846	COVER L ASY	○	○	
13			1			CA02758-Y846	LOWER COVER L	○	○	
14			1			CA02758-Z216	MFF RUBBER	○	○	
15~16			1			CA02758-G848	PLATE L ASY	○	○	
15				1		CA02758-Y848	LOWER PLATE L	○	○	
16				2		CA04040-Y825	RUBBER FOOT	○	○	
17			1			F6-ER4-S	SNAP RING	○	○	
18			1			F6-SN2TP3-08	TAPPING SCREW	○	○	
19			1			CA02758-Z821	PTGL DUMPER	○	○	
20		2		@		CA02758-0196	TAPPING SCREW	○	○	
21	1					CA02758-Y105	L TYPE STAY	○	○	
22	3					F6-SBD3-06121	BINDING HEAD SCREW	○	○	
23	1					CA02758-Y106	LOWER STAY	○	○	
24	3					F6-SBD3-06121	BINDING HEAD SCREW	○	○	
25	1					CA02758-Y104	FRONT STAY	○	○	
26	2					CA02758-0195	TAPPING SCREW	○	○	
27~29	1					CA02758-G114	PR GUIDE L ASY	○	○	
27		1				CA02758-Y114	PR GUIDE L	○	○	
28		1				CA02758-Z114	PRGL LABEL	○	○	
29		1		*		CA02758-G127	COVER OPEN SW	○	○	
30	1			@		CA02758-Y606	FG PLATE P	○	○	
31	1			@		CA02758-0195	TAPPING SCREW	○	○	

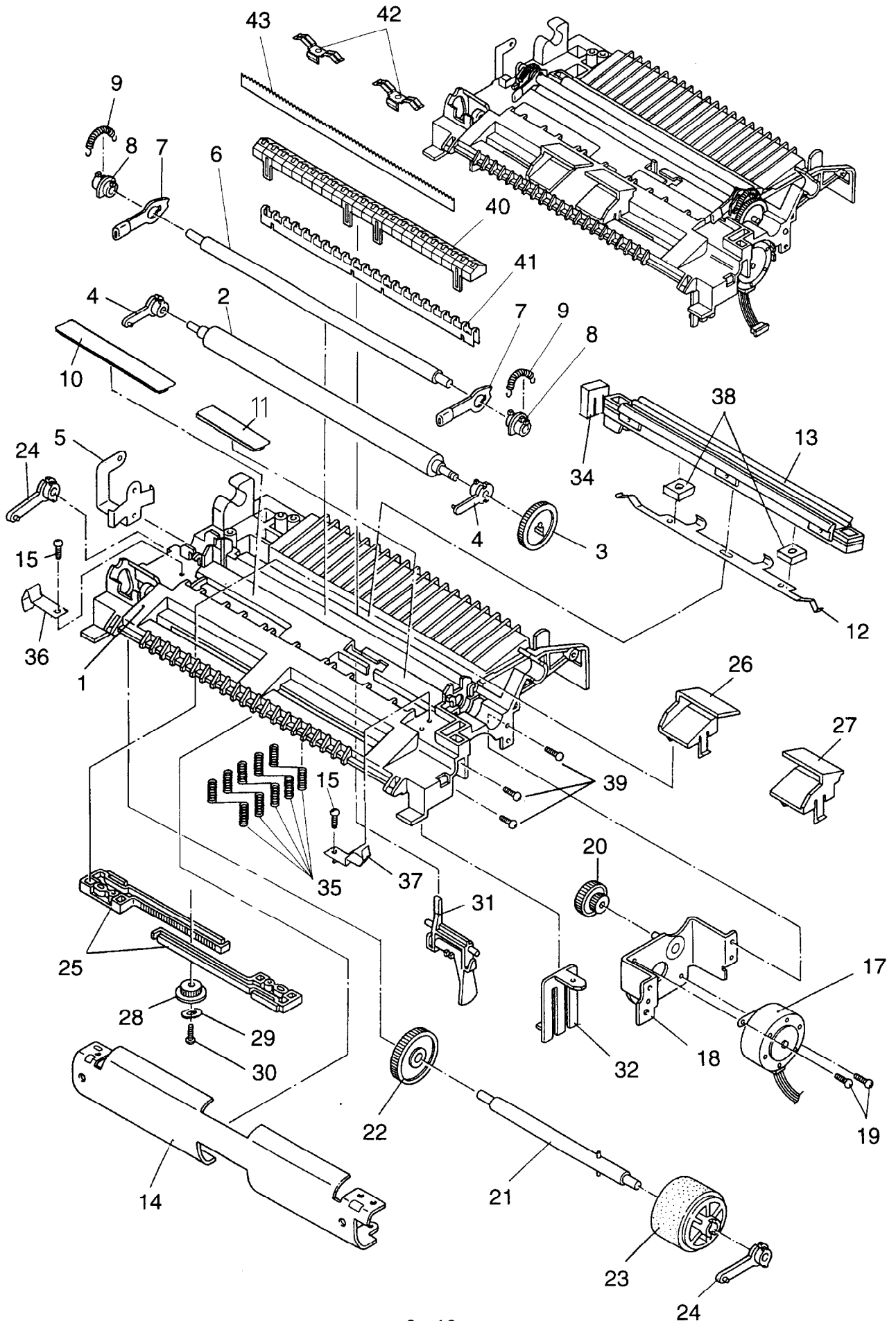
3.5 Printer Mecha Unit 2-2



3.5 Printer Mecha Unit 2-2

Index No.	Composition & Quantity			S P	Specification	Parts name (Description)	AC(V)		Remarks
							120	220 -240	
1	1				CA02758-G261	GEAR BOX ASY	○	○	
2	1				CA02758-G112	FRAME R SUB ASY	○	○	
3	8				CA02758-0195	TAPPING SCREW	○	○	
4~13	1			@	CA02758-G825	COVER R ASY	○	○	
4		1			CA02758-Y847	LOWER COVER R	○	○	
5		1		*	CA02758-G172	PSS BOARD	○	○	
6		1			F6-SN2TP3-08	TAPPING SCREW	○	○	
7		1			CA02758-Y164	PSS CABLE	○	○	
8		1			CA02758-Y727	PT LOCK LEVER	○	○	
9		1			CA02758-Y728	PT LOCK SPRING	○	○	
10~11		1			CA02758-G849	PLATE R ASY	○	○	
10			1		CA02758-Y849	LOWER PLATE R	○	○	
11			2		CA04040-Y825	RUBBER FOOT	○	○	
12		1			F6-SN2TP3-08	TAPPING SCREW	○	○	
13		1			CA02758-Z823	PTGR DUMPER	○	○	
14	2			@	CA02758-0196	TAPPING SCREW	○	○	
15~21	1				CA02758-F251	M MOTOR ASY	○	○	
15		1		*	CA02758-0251	MAIN MOTOR	○	○	
16		4			CA02758-Y291	DUMPER MM	○	○	
17		1		@	CA02758-G251	MM BRACKET ASY	○	○	
18		4			CA02758-0195	TAPPING SCREW	○	○	
19		1		@	CA02758-Y256	GEAR MA	○	○	
20		1		@	CA02758-Y257	GEAR MB	○	○	
21		1		@	CA02758-Y255	MM CABLE	○	○	
22	4			@	CA02758-0195	TAPPING SCREW	○	○	
23	1			*	CA02758-0129	FAN	○	○	
24~26	1				CA02758-G115	PR GUIDE R ASY	○	○	
24		1			CA02758-Y115	PR GUIDE R	○	○	
25		1			CA02758-Z115	PRGR LABEL	○	○	
26		1			CA02758-Y116	DRFG	○	○	

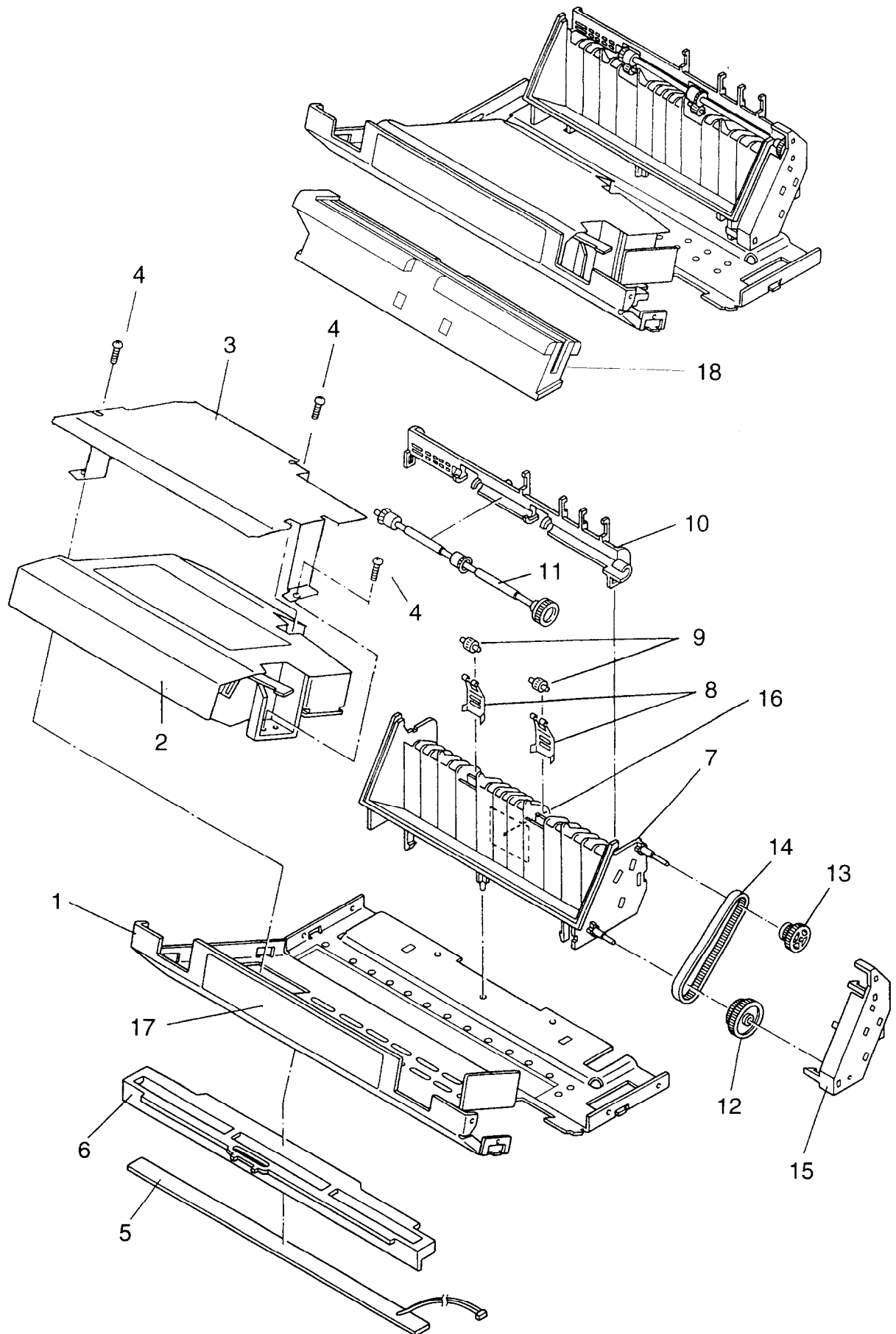
3.6 Base Frame



3.6 Base Frame

Index No.	Composition & Quantity			S P	Specification	Parts name (Description)	AC(V)		Remarks
							120	220 -240	
1~37	1								
1	1				CA04040-F470	BASE FRAME ASY	○	○	
2	1				CA04040-Y471	BASE FRAME	○	○	
3	1			@	CA02758-G611	FEED ROLLER ASY	○	○	
4	1			@	CA02758-Y613	GEAR F	○	○	
5	1			@	CA02758-Y605	BEARING PF	○	○	
6	1			@	CA02758-Y614	FG PLATE FR	○	○	
7	1			@	CA02758-Y621	RESIST ROLLER	○	○	
8	2			@	CA02758-G627	LEVER ASY	○	○	
9	2			@	CA02758-Y623	BEARING R	○	○	
10	2			@	CA02758-Y625	SPRING R	○	○	
11	1			@	CA02758-Z011	SHEET RE1	○	○	
12	1			@	CA02758-Z012	SHEET RE2	○	○	
13	1			@	CA02758-Y458	FG PLATE T	○	○	
14	1			*	CA04040-F450	TRCG UNIT	○	○	
15	1				CA02758-Y103	PAPER GUIDE F	○	○	
16	2			@	CA02758-0195	TAPPING SCREW	○	○	
17	2				CA02758-Z806	DUMPER F	○	○	
17~20	1				CA04040-F221	R MOTOR ASY	○	○	
17		1		*	CA04040-0201	REGIST MOTOR	○	○	
18		1			CA02758-G222	RM BRACKET ASY	○	○	
19		2		@	F6-SW2N3-08111	SCREW	○	○	
20		1			CA02758-Y224	GEAR R	○	○	
21	1			@	CA02758-G604	SHAFT P ASY	○	○	
22	1			@	CA02758-0603	PICK GEAR	○	○	
23	1			*	CA02758-G600	ROLLER P ASY	○	○	
24	2			@	CA02758-Y605	BEARING PF	○	○	
25	2			@	CA02758-Y642	RACK	○	○	
26	1			@	CA02758-Y643	GUIDE FL	○	○	
27	1			@	CA02758-Y644	GUIDE FR	○	○	
28	1			@	CA02758-Y641	PINION	○	○	
29	1			@	F6-WM3-111	WASHER	○	○	
30	1			@	F6-SN2TP3-06	TAPPING SCREW	○	○	
31	1			@	CA02758-Y654	SENSOR LEVER 4	○	○	
32	1			@	CA02758-Y729	TRIDENT LEVER	○	○	
33	1				CA02758-Y152	SPRING HV1	○	○	
	1				CA02758-Y153	SPRING HV2	○	○	
	1				CA02758-Y154	SPRING HV3	○	○	
	1				CA02758-Y155	SPRING HV4	○	○	
	1				CA04040-Y466	SPRING HV5	○	○	
34	2			@	CA02758-Y025	TRCG STOPPER	○	○	
35	1				CA02758-Z805	SOUND PROOF	○	○	
36	1				CA02758-Y193	P GUIDE FG L	○	○	
37	1				CA02758-Y194	P GUIDE FG R	○	○	
38	2			@	CA02758-Y477	TRCG STOPPER	○	○	
39	3			@	CA02758-0195	TAPPING SCREW	○	○	
40~41	1				CA04040-F460	DCH GUIDE ASY	○	○	
40		1			CA04040-Y461	DCH GUIDE	○	○	
41		1			CA04040-Y462	DCH PLATE A	○	○	
42	2				CA04040-Y467	DCH PLATE C	○	○	
43	1				CA04040-Y468	DCH PLATE B	○	○	

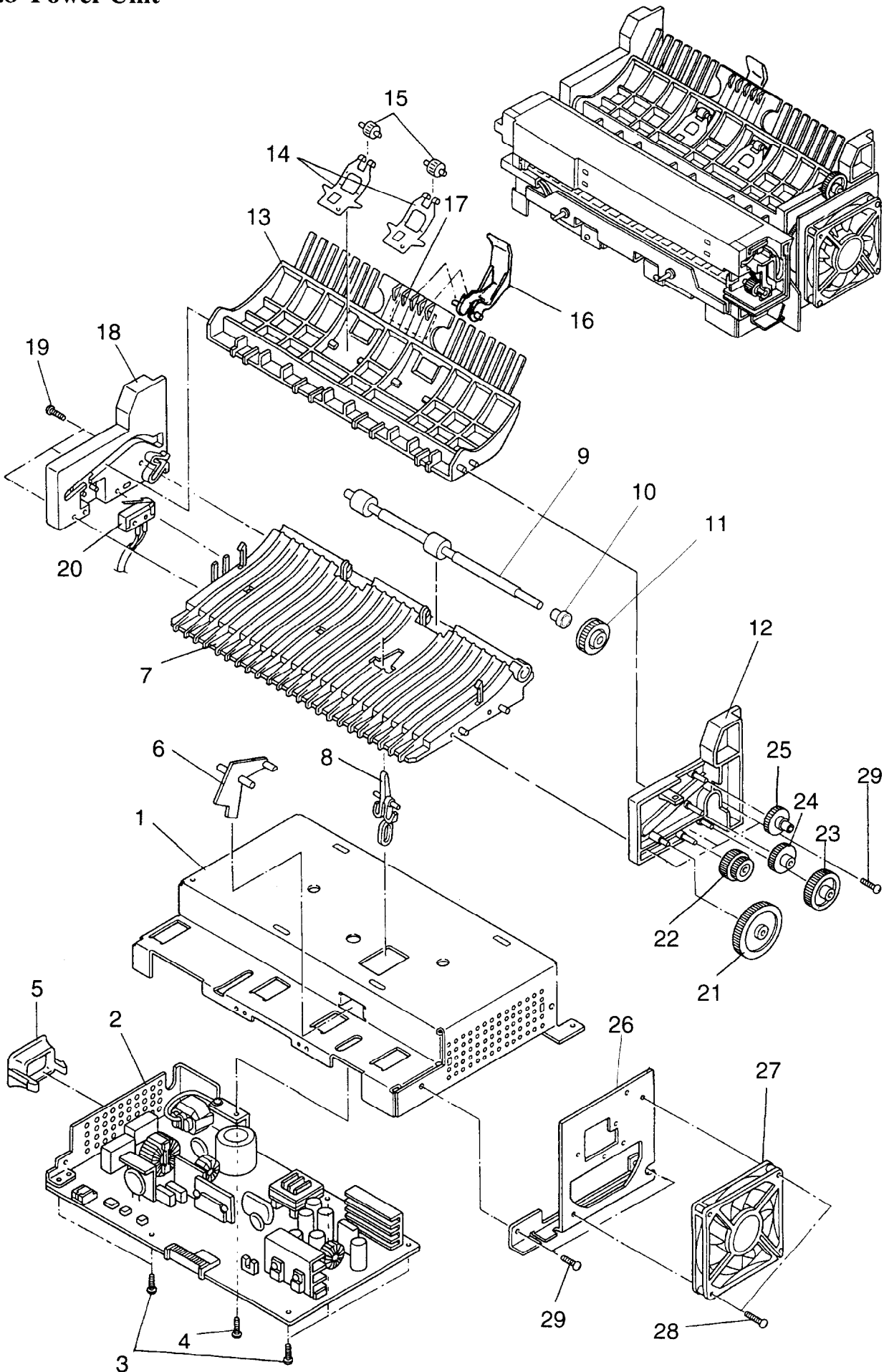
3.7 Laser Diode Stay



3.7 Laser Diode Stay

Index No.	Composition & Quantity				S P	Specification	Parts name (Description)	AC(V)		Remarks
								120	220 -240	
1~18	1					CA04040-G525	LD STAY ASY	○	○	
1		1				CA02758-Y121-TK	LD STAY	○	○	
2		1			*	CA02758-0121	LD UNIT	○	○	
3		1			@	CA02758-Y063	LD FG COVER	○	○	
4		3			@	F6-SW2N3-08111	SCREW	○	○	
5~6		1			@	CA02758-G123	DCH LED UNIT	○	○	
5			1			CA02758-0123	DCH LED	○	○	
6			1			CA02758-Y124	LED HOLDER	○	○	
7~16		1			*	CA02758-F680	FRAME 2 ASY	○	○	
7			1			CA02758-Y680	PAPER FRAME 2	○	○	
8~9			2			CA02758-G682	FEED 2 ASY	○	○	
8				1		CA02758-Y682	FEED SPRING 2	○	○	
9				1		CA02758-Y673	PINCH ROLLER	○	○	
10~11			1			CA02758-F690	GUIDE ASY	○	○	
10				1	@	CA02758-Y690	ROLLER GUIDE	○	○	
11				1	@	CA02758-G692	ROLLER ASY	○	○	
12			1		@	CA02758-Y684	GEAR 6	○	○	
13			1		@	CA02758-G685	GEAR 7 ASY	○	○	
14			1		@	CA98001-5552	TIMING BELT	○	○	
15			1		@	CA02758-Y688	GEAR COVER	○	○	
16			1		@	CA02758-Y592	LABEL	○	○	CAUTION
17		1			@	CA02758-Y591	LABEL	○	○	CAUTION
18		1			@	CA04040-Y154	CL GUIDE	○	○	

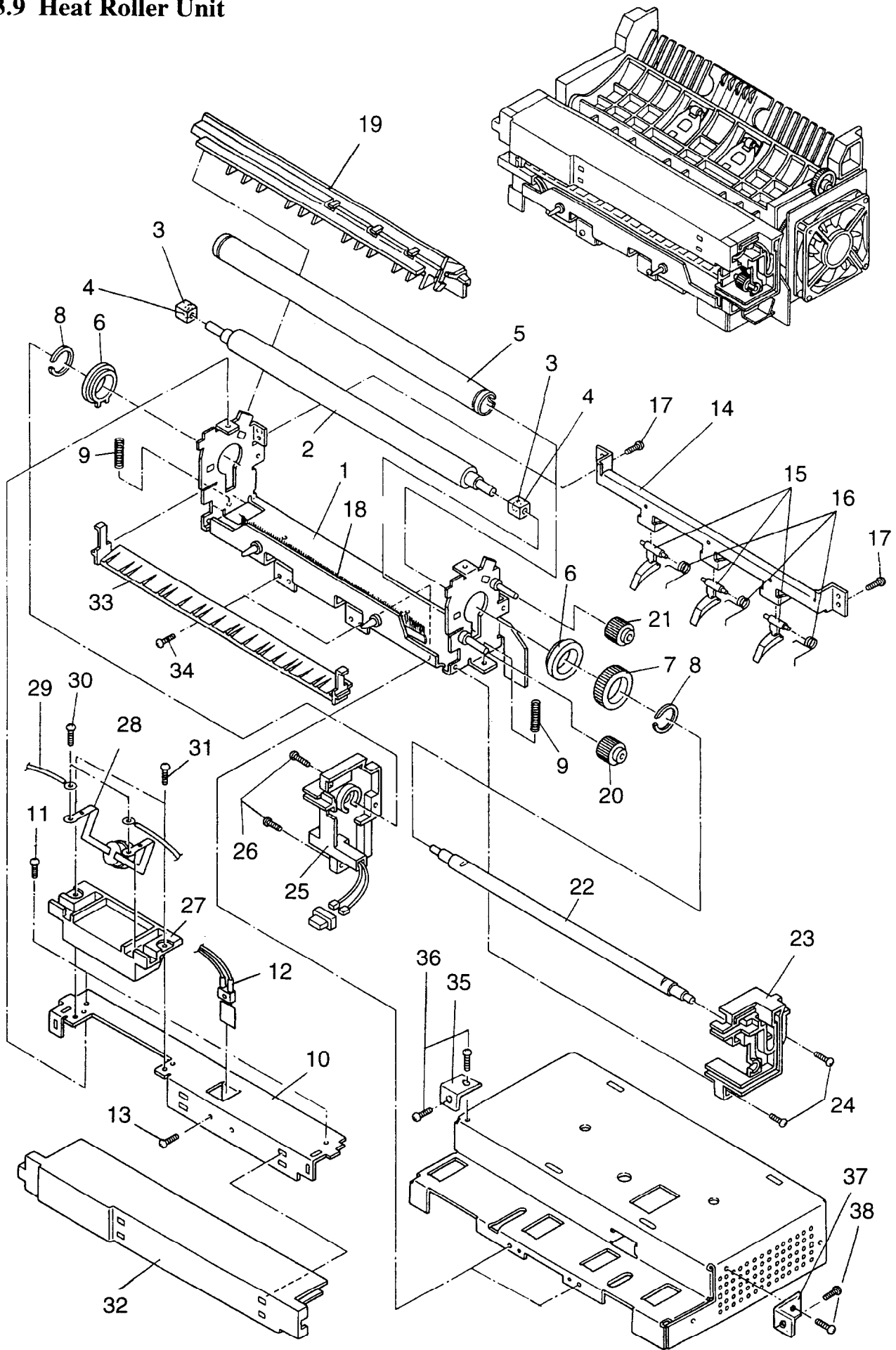
3.8 Power Unit



3.8 Power Unit

Index No.	Composition & Quantity				S P	Specification	Parts name (Description)	AC(V)		Remarks
								120	220 -240	
1~	1 1					CA04040-F544 CA04040-F545	POWER UNIT POWER UNIT	○ ○	○ ○	100-120V 220-240V
1	1					CA02758-G135	PB COVER	○	○	
2	1				*	CA02951-4260	POWER BOARD	○	○	100-120V
	1				*	CA02951-4265	POWER BOARD	○	○	220-240V
3	5				@	CA02758-0197	TAPPING SCREW	○	○	
4	1				@	F6-SW2N3-06121	SCREW	○	○	
5	1				@	CA02758-Y137	SWITCH COVER	○	○	
6	1					CA02758-Y655	SENSOR LEVER 5	○	○	
7~20	1					CA04040-F590	PAPER FRAME ASY	○	○	
7		1				CA02758-Y675	PAPER FRAME	○	○	
8		1				CA02758-Y679	SENSOR LEVER 6	○	○	
9		1				CA04040-G591	EJECT ROLLER	○	○	
10		1				CA04040-Y592	ER BEARING	○	○	
11		1				CA04040-0590	ONE WAY CLUTCH	○	○	
12		1				CA02758-Y676	SIDE FRAME LP	○	○	
13~17		1			@	CA02758-F671	PAPER GUIDE ASY	○	○	
13			1			CA02758 Y670-TK	PAPER GUIDE	○	○	
14~15			1			CA02758-G673	FEED 1 ASY	○	○	
14				1		CA04040-Y672	FEED SPRING 1	○	○	
15				1		CA02758-Y673	PINCH ROLLER	○	○	
16			1			CA02758-Z671	STACK LEVER	○	○	
17			1			CA02758-Y671	P LABEL	○	○	
18		1				CA02758-Y677	SIDE FRAME RP	○	○	
19		6			@	F6-SN2TP3-08	TAPPING SCREW	○	○	
20		1				CA02758-G678	SWITCH ASY	○	○	
21		1			@	CA02758-Y661	GEAR 1	○	○	
22		3			@	CA02758-Y662	GEAR 2	○	○	
23		1			@	CA02758 Y663	GEAR 3	○	○	
24		1			@	CA02758-Y664	GEAR 4	○	○	
25		1			@	CA02758-Y665	GEAR 5	○	○	
26		1			@	CA02758-Y668	FAN BRACKET	○	○	
27		1			*	CA02758-G128	FAN ASY	○	○	
28		2			@	F6-SW2N3-20111	SCREW	○	○	
29		2			@	CA02758-0195	TAPPING SCREW	○	○	

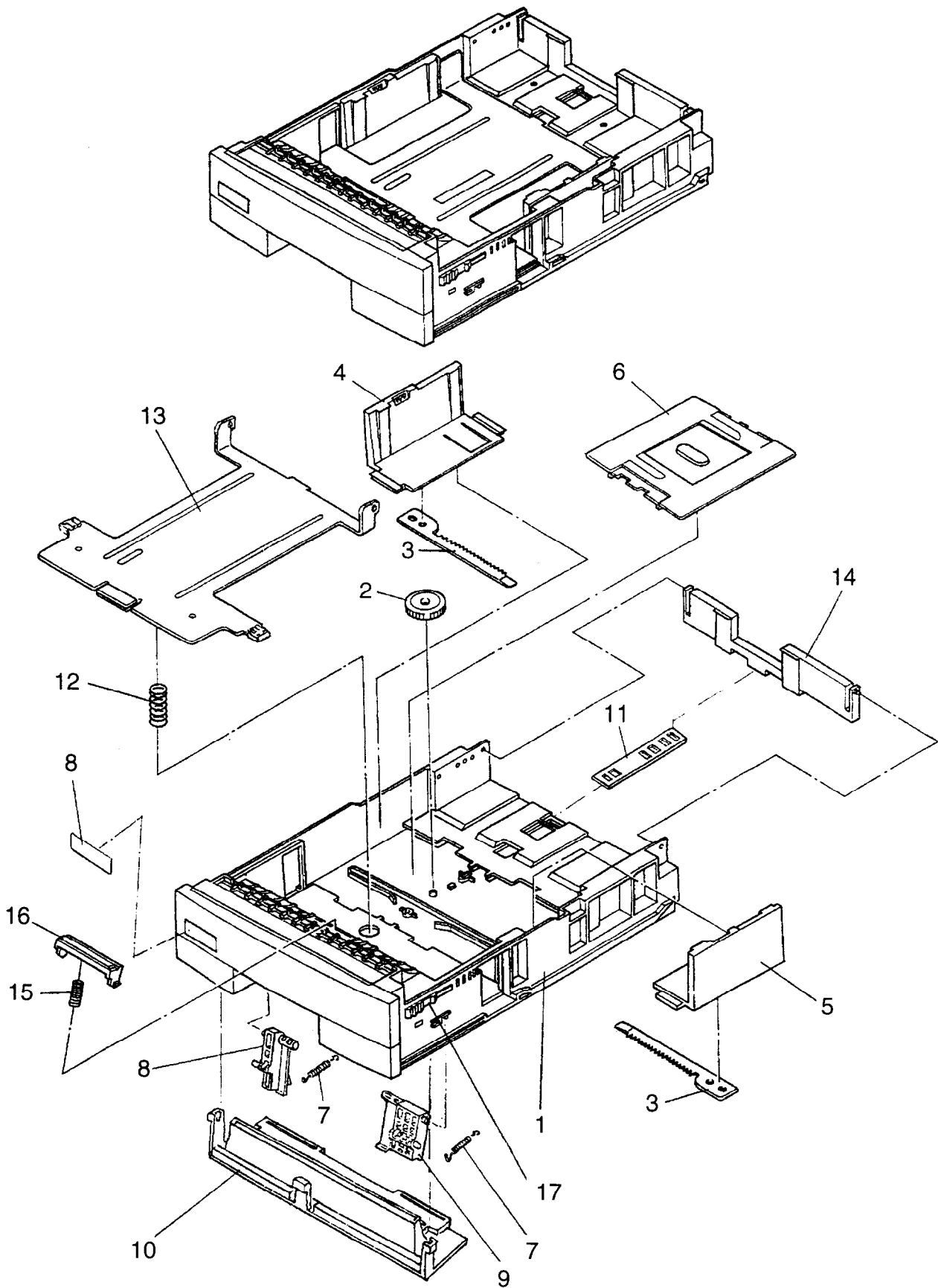
3.9 Heat Roller Unit



3.9 Heat Roller Unit

Index No.	Composition & Quantity				S P	Specification	Parts name (Description)	AC(V)		Remarks
								120	220 ~240	
1~33	1 1					CA04040-F501 CA04040-F502	HR UNIT HR UNIT	○ ○	○	120V 220-240V
1~25		1 1				CA04040-G501 CA04040-G502	HR SUB UNIT HR SUB UNIT	○ ○	○	120V 220-240V
1~17			1			CA04040-G510	HR BASE UNIT	○	○	
1				1		CA02758-G519	HR FRAME ASY 1	○	○	
2				1		CA04040-G513	BU ROLLER ASY	○	○	
3				2		CA02758-Z531	BEARING BR	○	○	
4				2		CA98001-6511	BEARING	○	○	
5				1		CA04040-G511	HEAT ROLLER ASY	○	○	
6				2		CA02758-Y532	BEARING HR	○	○	
7				1		CA02758-Y533	GEAR HR	○	○	
8				2		CA02758-Y535	RING HR	○	○	
9				2		CA02758-Z534	SPRING BR	○	○	
10				1		CA02758-Y541	HR FRAME U	○	○	
11				2		CA02758-0195	TAPPING SCREW	○	○	
12				1		CA02758-0544	THERMISTOR ASY	○	○	
13				1		CA02758-0199	TAPPING SCREW	○	○	
14~16				1		CA02758-G560	SEPARATOR ASY	○	○	
14					1	CA02758-Y560	PLATE SP	○	○	
15					3	CA02758-Y561	SEPARATOR	○	○	
16					3	CA02758-Y562	SPRING SP	○	○	
17				2		CA02758-0195	TAPPING SCREW	○	○	
18		1				CA04040-Y155	HR COVER R	○	○	
19		1				CA02758-Y538	GEAR HG1	○	○	
20		1				CA02758-Y539	GEAR HG2	○	○	
21		1				CA02758-0511	HEATER LAMP	○	○	120V
		1				CA02758-0512	HEATER LAMP	○	○	220-240V
22		1				CA02758-Y577	HR COVER SR	○	○	
23		2				CA02758-0195	TAPPING SCREW	○	○	
24		1				CA02758-Y573	COVER SL	○	○	
25		2				CA02758-0195	TAPPING SCREW	○	○	
26~27		1				CA02758-G581	TH HOLDER ASY	○	○	
26			1			CA02758-Y581	HOLDER	○	○	
27			1			CA02758-0582	THERMOSTAT ASY	○	○	
28		1				CA02758-0584	HR CABLE ASY	○	○	
29		2				F6-SW2N3-06121	SCREW	○	○	
30		2				CA02758-0195	TAPPING SCREW	○	○	
31		1			@	CA02758-Y579	HR COVER F	○	○	
32		1			@	CA98001-5557	CONNECTOR	○	○	
33		1			@	CA02758-Y537	PAPER GUIDE HR	○	○	
34	1					CA02758-Z525	PLATE L	○	○	
35	2					CA02758-0195	TAPPING SCREW	○	○	
36	1					CA02758-Z526	PLATE R	○	○	
37	2					CA02758-0195	TAPPING SCREW	○	○	

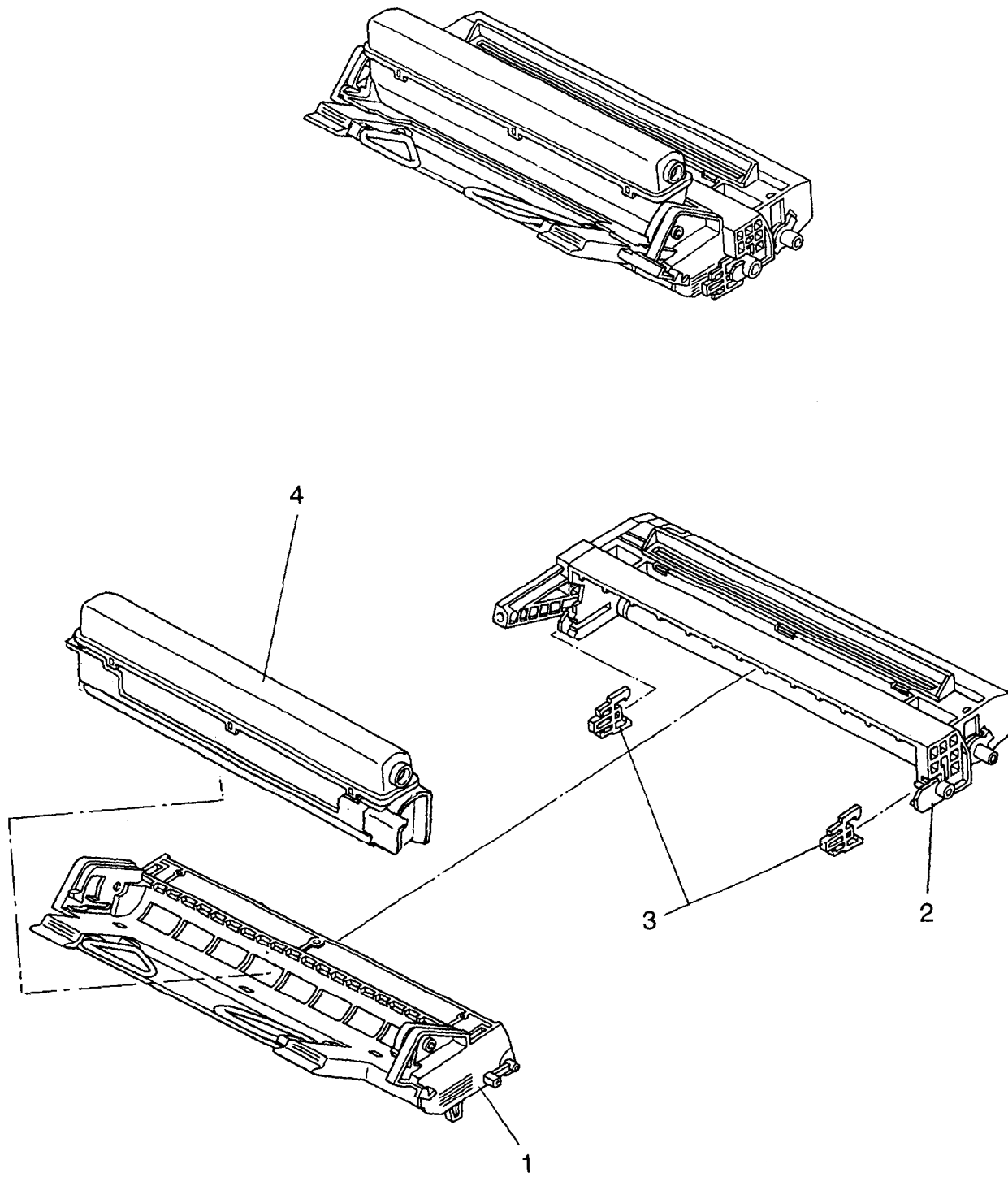
3.10 Paper Tray



3.10 Paper Tray

Index No.	Composition & Quantity				S P	Specification	Parts name (Description)	AC(V)		Remarks
								120	220 ~240	
1~	1					CA04040-F701 CA04040-F702	PAPER TRAY PAPER TRAY	○ ○	○ ○	A4 LETTER
1	1				@	CA04040-G701	PAPER TRAY	○	○	
2	1				@	CA04040-Y725	PINION	○	○	
3	2				@	CA04040-Y726	RACK	○	○	
4	1				@	CA04040-Y721	PAPER GUIDE L	○	○	
5	1				@	CA04040-G722	GUIDE R ASY	○	○	
6	1				@	CA04040-Y727	COVER UG	○	○	
7	2				@	CA04040-Z714	SPRING	○	○	
8	1				@	CA04040-Y714	HOLDER L	○	○	
9	1				@	CA04040-Y715	HOLDER R	○	○	
10	1				@	CA04040-Y717	LOWER GUIDE	○	○	
11	1				@	CA04040-Y719	PLATE	○	○	
12	1				@	CA04040-Y713	SPRING	○	○	
13	1				@	CA04040-G711	PLATE ASY	○	○	
14	1				@	CA04040-Y723	PAPER GUIDE E	○	○	
15	1				@	CA02417-Y708	HOLDER	○	○	
16	1				@	CA04040-G730	SEPARATOR	○	○	
17	1				@	CA02758-Y719	P SIZE LEVER	○	○	
18	1				@	CA02417-Y720	SIZE LABEL	○	○	A4
	1				@	CA02417-Y724	SIZE LABEL	○	○	LETTER

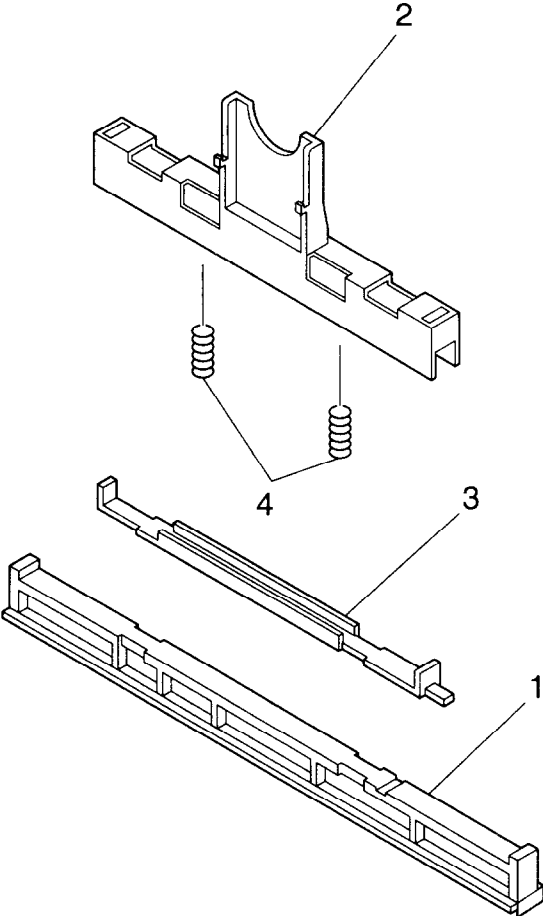
3.11 Print Unit



3.11 Print Unit

Index No.	Composition & Quantity				S P	Specification	Parts name (Description)	AC(V)		Remarks
								120	220 ~240	
1~4	1					CA02758-E400	PRINT UNIT	○	○	
1	1					CA02758-F300	DEV. UNIT	○	○	
2	2					CA02758-F400	DRUM UNIT	○	○	
3	2					CA02758-G371	P LOCK ASY	○	○	
4	1					CA02758-E300	TONER BOTTLE	○	○	

3.12 Cleaner



3.12 Cleaner

Index No.	Composition & Quantity				S P	Specification	Parts name (Description)	AC(V)		Remarks
								120	220 ~240	
1~4	1					CA04040-G521	CLEANER	○	○	
1		1				CA04040-G522	CL PAD ASY	○	○	
2~4		1			@	CA04040-G523	CL HOLDER ASY	○	○	
2			1			CA04040-Y150	CL HOLDER	○	○	
3			1			CA04040-Y151	CL P PLATE	○	○	
4			2			CA04040-Y524	CL SPRING	○	○	

FUJITSU