

THE POSSIBILITIES ARE INFINITE

FUJITSU

# ScanSnap

Color Image Scanner

## Changing how documents are managed



One button scanning to searchable PDF

Scan directly to Microsoft® applications

20% faster scanning speed

Business card scanning

Color Duplex  
18 pages  
per minute!



Included to work with Microsoft® Windows® Operating Systems

**Adobe Acrobat® 7.0 Standard**

**ScanSnap Organizer V3.0** PDF File Arranging & Viewing Software

**PFU CardMinder™ V3.0** Business Card Scanning Software

Enhance productivity with Fujitsu service and support

## Features:

**Scan 18 double-sided pages per minute:**  
In one step, the Fujitsu ScanSnap S500 scanner digitizes both sides of a document in a single pass, in color, and at an amazing speed of up to 18 pages per minute.

**Advanced features for the ultimate ease of use!**  
With a touch of the button the ScanSnap S500 scanner enhances the user experience with a host of automatic features, including:

### Auto paper size detection

Scan mixed batches of documents containing paper ranging in size from business cards to legal sized documents.

### Auto de-skew

Automatically straightens and aligns text and images into their correct orientation.

### Auto blank page deletion

Save storage space and eliminate the need to edit scanned documents with the ScanSnap S500's ability to recognize and delete blank pages.

### Instantly create searchable PDF files:

The included "ScanSnap Organizer" automatically converts scanned data into searchable PDF files, while the ScanSnap S500's image enhancement technology increases character recognition for more precise OCR accuracy.

### Scan directly to Microsoft® Office Applications:

The bundled ABBYY FineReader® enables the user to scan documents directly to applications such as Word, Excel and PowerPoint®.

### Quickly organize business card information:

Scan business cards directly to your contacts database with the included CardMinder™ application. CardMinder captures information written in 7 languages from scanned business card images and stores this information in an easily accessible format.

### Simple installation and operation in a compact design!

The ScanSnap S500 scanner easily installs via its USB 2.0 interface and its small footprint requires less space than a letter size piece of paper.

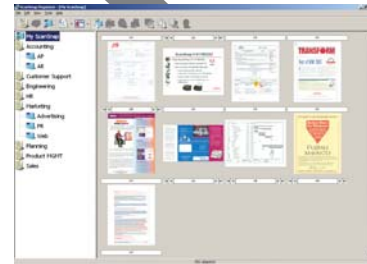
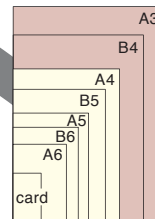
### Advance Exchange maximizes uptime:

The ScanSnap S500 scanner is covered by a one-year Limited Warranty. An upgrade to the Advance Exchange program (sold separately) is also available to eligible purchasers at [www.BuyFCPA.com](http://www.BuyFCPA.com). For full details on the Limited Warranty and on all service programs, go to [www.ImagingService.com](http://www.ImagingService.com) or call (800) 626-4686.

# ScanSnap

Color Image Scanner

## Quickly and easily digitize various document types!



General Technical Specifications		
Product Name	ScanSnap S500	
Scanner type	ADF (Automatic Document Feeder), Duplex color scanning	
Output	Color/B&W/Automatic color and B&W detection	
Image sensor	Color CCD x2	
Optical Resolution	600dpi	
Scanning Speed (A4)	Normal Mode	Color 150dpi, B&W 300dpi : 18 pages per minute/36 images per minute
	Better Mode	Color 200dpi, B&W 400dpi : 12 pages per minute/24 images per minute
	Best Mode	Color 300dpi, B&W 600dpi : 6 pages per minute/12 images per minute
	Excellent Mode	Color 600dpi, B&W 1,200dpi : 0.6 pages per minute/1.2 images per minute
	Scanning Range	A4, A5, A6, B5, B6, Business card, Letter, Legal and Custom sizes (can set for up to 5 different paper types)/Automatically recognizes paper type by paper length. Use of Carrier Sheet permits the scanning of A3, B4, double letter and photographs as well as those listed above.
Paper Weight (Thickness)	52 to 127g/m <sup>2</sup> (14 to 34 lb)	
Hopper Capacity	50 Sheets (20lb)	
Interface	USB 2.0 (USB 1.1 Compatible)	
Driver	ScanSnap Specific Driver <sup>1</sup> (TWAIN/ISIS® not supported)	
Applications	Adobe® Acrobat® 7.0 Standard, ABBYY FineReader® for ScanSnap 2.0, CardMinder™ v3.0, ScanSnap Organizer v3.0	
Compatible Operating System	WIN 98SE/2000/XP	
Power Requirement	AC 100 to 240V, 50 / 60 Hz	
Power Consumption	Scan mode: 28W or less, Sleep mode: less than 6W	
Operation Environment	Temperature	5°C to 35°C (42°F to 95°F)
	Relative Humidity	20 to 80% (non-condensing)
Dimensions (W x D x H)	284 x 157 x 158 mm (11.2 x 6.2 x 6.2 in)	
Device Weight	5.9lbs. or less, without power adapter	
Environmental Compliance	ENERGY STAR® Compliant	
Limited Warranty	1 year Limited Warranty. For full details, visit <a href="http://www.fcpa.fujitsu.com/warranties">www.fcpa.fujitsu.com/warranties</a> or call (800) 626-4686	
Service Options	In-Warranty Upgrade - Advance Exchange. Post-Warranty - Advance Exchange Plus. ScanAid Cleaning and Consumables kit. For full details on all service programs, visit <a href="http://www.ImagingService.com">www.ImagingService.com</a>	
Part Number	PA03360-B505	

<sup>1</sup> TWAIN or ISIS applications cannot be used directly.

Consumables		
Description	Part Number	Remarks
Pad assembly	PA03360-0002	Lifetime: Every 50,000 sheets for one year.
Pick roller	PA03360-0001	Lifetime: Every 100,000 sheets for one year.
ScanAid™ Kit	CG01000-510501	Includes 2 Pad assemblies, 1 pick roller and cleaning kit
Options		
Description	Part Number	Remarks
ScanSnap Carrier Sheet*	PA03360-0013	5 carrier sheets. Intended for ScanSnap S500 and ScanSnap fi-5110E0X series scanners
ScanSnap Bag	PA03951-0651	Intended for ScanSnap S500 and fi-5110E0X series scanners and included items.

\*Although ScanSnap Carrier Sheets have a listed lifespan of 500 scans, life spans may vary. ScanSnap Carrier Sheets are used to scan documents containing paper that weighs less than 127g/m<sup>2</sup> as well as folded documents as large as 216mm x 297mm.

System Requirements		Windows® 98	Windows® 98 Second Ed.	Windows® Me	Windows® 2000 Professional	Windows® XP
Compatible Operating Systems	ScanSnap Manager V4.0	Supported	Supported	Supported	Supported	Supported
	ScanSnap Organizer V3.0	Supported	Supported	Supported	Supported	Supported
	CardMinder™ V3.0	Supported	Supported	Supported	Supported	Supported
	Adobe® Acrobat® 7.0 Standard <sup>2</sup>	Not Supported	Not Supported	Not Supported	Supported <sup>1</sup>	Supported <sup>1</sup>
	ABBYY FineReader® for ScanSnap™ 2.0	Supported	Supported	Supported	Supported	Supported
Hardware Requirements <sup>4</sup>	CPU	Intel® Pentium®III 600MHz or higher (Intel® Pentium® 4 1.8GHz or higher recommended)				
	Memory Capacity <sup>3</sup>	128MB or higher (256MB or higher recommended)				
	Optical Resolution	800 x 600 dots or higher				
	Disk Capacity	Spare capacity of at least 1,080MB is necessary to install the software that is included in this chart. <sup>3</sup>				
	CD-ROM Drive	Required for installation				
USB port	USB2.0/USB1.1					

<sup>1</sup> Compatible with Windows® 2000 Professional (Service Pack 2 or higher) and Windows® XP Professional/Home Edition.

<sup>2</sup> Requires Microsoft® Internet Explorer 5.5 or higher.

<sup>3</sup> A memory capacity of 512MB or higher is recommended when scanning in "Excellent mode".

<sup>4</sup> Scanning speeds may drop if recommended CPU, memory capacity and USB1.1 requirements are not met.

<sup>5</sup> Installing Adobe® Acrobat® 7.0 Standard in addition to the other software included with this scanner will require additional 300MB in File Cache memory.

© 2007 Fujitsu Computer Products of America, Inc. All rights reserved. Fujitsu and the Fujitsu logo are registered trademarks and The Possibilities are Infinite is a trademark of Fujitsu Limited. Adobe, the Adobe logo, Adobe Acrobat, the Adobe Acrobat logo and Reader are registered trademarks of Adobe Systems Incorporated in the United States and/or other countries. As an ENERGY STAR® partner, PFU Limited, a Fujitsu company, has determined that this product meets the ENERGY STAR® guidelines for energy efficiency. ENERGY STAR® is a registered trademark of the United States. ISIS is a registered trademark of EMC Corporation in the United States. Intel and Pentium are registered trademarks of Intel Corporation in the United States and/or in other countries. ABBYY FineReader are trademarks of ABBYY Software House. Microsoft, Word, Excel, PowerPoint and Windows are either registered trademarks of Microsoft Corporation in the United States and/or other countries.

All other trademarks are the property of their respective owners. All statements herein are valid only in the U.S. For U.S. residents, are based on normal operating conditions, are provided for informational purposes only, and are not intended to create any implied warranty of merchantability or fitness for a particular purpose. Fujitsu Computer Products of America, Inc. reserves the right to modify at any time without prior notice these statements, our products, their performance specifications, availability, price and warranty, post-warranty and service programs.

Printed in the U.S.A. Qty. 7.5M P/N DS33900107



<http://scansnap.fujitsu.com>

Fujitsu Computer Products of America, Inc.  
<http://us.fujitsu.com/fcpa>  
 1255 East Arques Avenue, Sunnyvale, CA 94085-4701  
 Telephone: (800) 626-4686 (408) 746-7000 [info@fcpa.fujitsu.com](mailto:info@fcpa.fujitsu.com)

# FUJITSU

THE POSSIBILITIES ARE INFINITE