

Advanced Capacity Planning

React to planning activities while respecting constraints

Material planning tools are helpful but have one major weakness — they assume infinite production capacity. The result is the creation of production schedules that cannot be executed and leads to problems in fulfilling commitments. For manufacturers to overcome this challenge, they must be able to apply constraints to their material plans.

glovيا.com Advanced Capacity Planning is a Java-based, memory-resident planning tool that enables manufacturers to determine the most effective way to execute production schedules that respect material plan constraints. The module applies capacity and tooling constraints to production plans generated by Material Requirement Planning or Master Production Scheduling systems.

glovيا.com Advanced Capacity Planning provides many benefits to manufacturers:

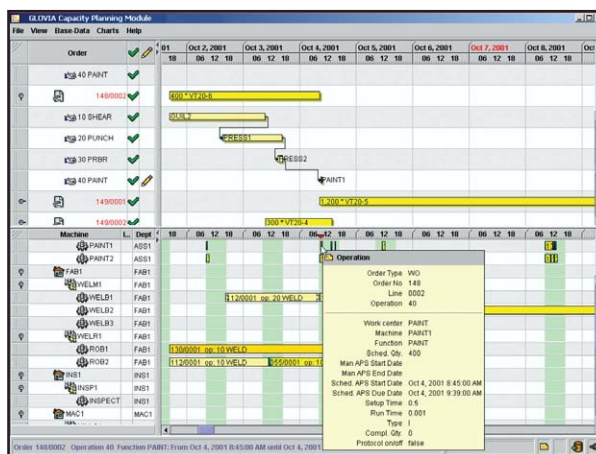
- Increases production throughput
- Reduces changeover
- Identifies and eliminates production bottlenecks
- Minimizes costs associated with unplanned downtime, overtime and idle time
- Reduces production disruption from machine repair and/or maintenance
- Increases visibility into production plan and work orders

Respecting Capacity Constraints

Advanced Capacity Planning is a graphical application that displays a view of the shop load based on schedules generated by material planning applications. This enables users to see the overall picture and change the plan based on capacity limits or adjust capacity to make the plan.

For example, a work order may be given a start and completion date based on material planning requirements. However, due to capacity constraints, the work order cannot be completed on time. Advanced Capacity Planning considers the projected time-horizon of capacity constraints and helps manufacturers determine the best way to overcome the problem, such as running more shifts or adding capacity.

Manufacturers can also define tooling as a critical resource and have Advanced Capacity Planning plan against both constraints to generate a more realistic schedule. The solution increases productivity and throughput as it accounts for constraints, minimizes changeover, and sequences similar jobs together.



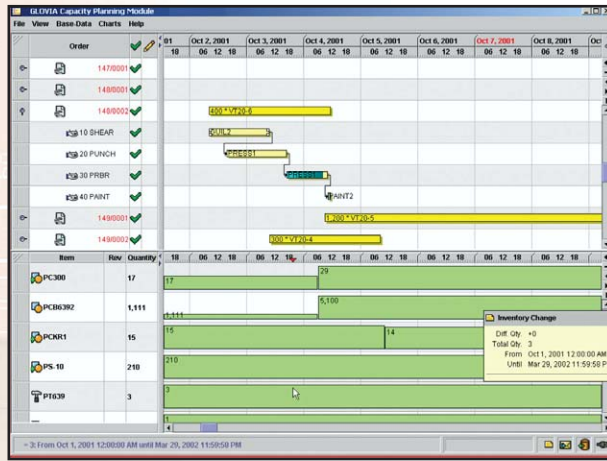
Increasing Production Visibility

Advanced Capacity Planning increases manufacturers' visibility into the demand for their capacity from manufacturing orders versus actual, constrained plant capacity. Advanced Capacity Planning identifies capacity overloads and bottlenecks before production is affected and enables manufacturers either to change the plan or adjust capacity to make the plan.

Real-time Planning

While other planning solutions require batch data model updates to function, Advanced Capacity Planning allows true real-time production planning. Advanced Capacity Planning's memory-resident data model is a seamless extension of glovia.com's real-time database so planning is always based on accurate, up-to-the-minute information.

As events happen throughout your company — orders entered, work orders completed, inventory received — they are reflected in both the glovia.com database and planning data model. This data synchronization ensures that you generate plans reflective of the true status of your factory, not an outdated snapshot.

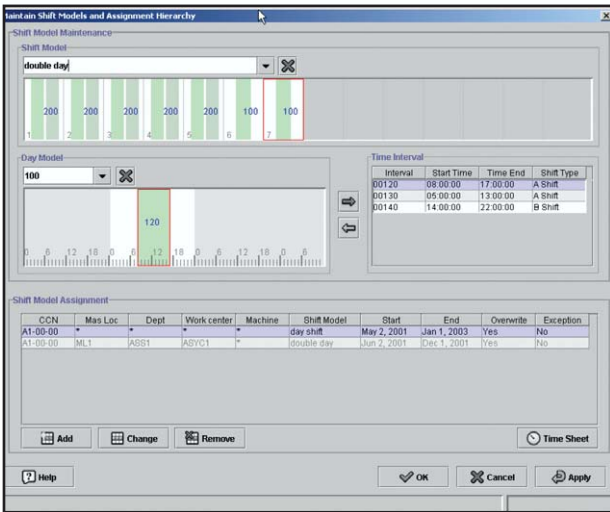


“What-if” Planning

Advanced Capacity Planning allows manufacturers to run and compare multiple “what-if” planning scenarios to find the most effective use of available capacity to meet commitments. The module is able to test real load, work orders, and repetitive schedules as well as consider computer-planned orders. The solution's flexible release horizon allows manufacturers to examine future capacity requirements — whether for the next shift or the next month.

Advanced Capacity Planning includes the following capabilities:

- Plans work orders, repetitive schedules, and computer planned orders
- Forward and backward scheduling—including limited and unlimited capacity options
- Generates multiple “what if” plans and allows users to select the final production plan
- Detailed scheduling granularity
- “Drag and drop” planning capabilities
- “Mouse over” functionality that shows detailed order and operational information
- Unlimited shift patterns that can be applied to a plant, department, work-center or individual machine
- Application of tooling as a secondary constraint when planning
- User-defined, changeable data element displays



Worldwide Headquarters

Glovia International, Inc.
1940 E. Mariposa Ave.
El Segundo, CA 90245-3457 U.S.A.

Toll Free: (800) 223-3799
Phone: (310) 563-7000
Fax: (310) 563-7300

For further information and regional locations please visit:

www.glovia.com

© Glovia International, Inc. 2003
GLOVIA, the Glovia logo, and Interstage are registered trademarks of Fujitsu, Ltd.

