

# *fi-6800*

**Fujitsu's new high performance scanner built for usability  
and for the environment**



- Incredibly fast 130ppm scanning
- Supporting a new compact design
- Added features for even better automation and power efficiency
  - "Automatic Sorting"
  - "Automatic Stacker"
  - "Automatic Image Quality Checker"
  - An excellent paper-feeding mechanism

Visit the fi-Series web site for ordering and purchasing information

<http://imagescanner.fujitsu.com/>

**A3**

**Color  
130  
A4 ppm\***

**Mono.  
130  
A4 ppm\***

**DUPLEX**

\*A4 Landscape 200/300dpi

## Features

### Incredibly fast scanning

The Fujitsu fi-6800 offers fast, 130ppm/260ipm, A4 landscape size color scanning from a new compact design. With unique image handling hardware and Kofax's "VRS Professional" ready out of the box, you will begin making professional grade scans in no time. A new scanner with superior cost performance is born!

### A new compact design that's sure to please users and the environment

Utilizing a high quality lens and extra-bright LED light source enclosed in heavy-duty resin frame, fi-6800's new compact design makes it the smallest in its class <sup>(1)</sup> (Takes up 53% less space and is 72% lighter than its predecessor).  
<sup>1</sup> Applies to business scanners priced between US\$10,000 and US\$34,999. -- True as of Aug. 1, 2009 (PFU Limited)

#### What will please users

- Easily perform scans even while sitting down thanks to fi-6800's low profile design
- Check scanner status and settings from an easy to navigate LCD panel
- Simple but very sturdy construction with a wide flip-up cover for easy cleaning
- Near silent running makes it perfect for office tasks



#### What will please the environment (Green IT)

- Constructed using minimum and lightweight raw materials
- Short recovery time from the extra-bright LED light source (within 6 seconds)
- Low power consumption when in sleep mode <sup>(2)</sup> (less than 4W)

<sup>2</sup> Without CGA board interface

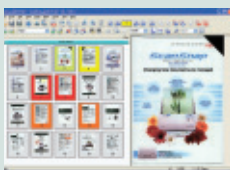
### New functions that boost automation, power efficiency and productivity

The fi-6800 supports new automatic functions that make scanner operating tasks even easier, faster and more energy efficient. With high speed scanning, you will see your work productivity jump leaps and bounds.

#### Scan and sort a stack of various documents in one pass using the state-of-the-art "Automatic Sorting" function

Sorting and saving document scans become completely hands free thanks to ScandAll PRO's extremely accurate "Automatic Sorting" function. With the flexibility of choosing between unique sorting sheets or barcode printed sheets to clearly separate various kinds of office documents, this function helps reduce scanner operation time while also bringing new levels of reliability.

#### Reduce the hassle of post-scan tasks with "Automatic Stacker" and "Automatic Image Quality Checker"



Automatic Stacker ensures all your scanned documents are stacked neat and tidy while Automatic Image Quality Checker detects any image irregularities (folds or tears in the scanned document) after scanning. Post-scan tasks have never been this easy.

#### An excellent paper-feed mechanism that guards against document damage and misaligned document feeds

Fujitsu's fi-6800 features a very reliable paper-feed mechanism which is derived from Fujitsu's top of the line fi-5900C model. Utilizing fi-Series' renowned "Paper Protection" Function and "Multifeed Protection" Function, paper feed problems are tackled before they happen. This brings optimum workflow to your business.

#### Kofax VRS (Virtual ReScan) Professional for Production bundled



- VRS verification and adjustment features generate perfect images every time.
- The ability to efficiently digitize large volumes of documents dramatically improves scanning productivity.
- Easy to use. Automated functions remove the need for skilled scanner operators.

## Options

Description	Part number	Comments
Post Imprinter (Front side) (FI-680PRF)	PA03575-D201	The imprinter option enables users to print information on original documents for document management purposes. While the FI-680PRF (post imprinter) prints information on the front of documents, the FI-680PRB (post imprinter) prints information on the reverse-side of documents after they have been scanned. Although both the FI-680PRF and the FI-680PRB may be attached to the same scanner unit, both imprinters cannot be used simultaneously.
Post Imprinter (Back side) (FI-680PRB)	PA03575-D203	

## Consumables

Description	Part number	Comments
Pick Roller	PA03575-K011	Lifetime: Every 600,000 sheets or one year. These rollers feed documents into the scanner.
Separator Roller	PA03575-K012	Lifetime: Every 600,000 sheets or one year. These rollers feed documents through the scanner.
Brake Roller	PA03575-K013	Lifetime: Every 600,000 sheets or one year. These rollers separate documents as they are being fed into the scanner.
Print Cartridge	CA00050-0262	Lifetime: 4,000,000 characters FI-680PRF and FI-680PRB print head

## Trademarks

- Microsoft, Windows, Windows Server, Windows Vista and SharePoint are either registered trademarks or trademarks of Microsoft Corporation in the United States and/or other countries.
- Adobe and Adobe Acrobat are either registered trademarks or tradenames of Adobe Systems Incorporated in the United States and/or other countries.
- ISIS is a registered trademark of EMC Corporation in the United States.
- Kofax and VRS are trademarks or registered trademarks of Kofax, Inc.
- Other company names and product names are the trademarks or registered trademarks of the respective companies.

## Technical Specifications

Product name	FI-6800	
Supported operating systems	Microsoft® Windows® 7 / Microsoft® Windows Vista™ (32bit/64bit) / Microsoft® Windows Server™ 2003 / 2008 (32bit/64bit) / Microsoft® Windows® XP (32bit/64bit) / Microsoft® Windows® 2000 Professional [VRS] Microsoft® Windows Vista™ Enterprise/Business (32bit/64bit) / Microsoft® Windows® XP Professional (32bit) / Microsoft® Windows® 2000 Professional (32bit)	
Scanner type	ADF (Automatic Document Feeder)+Manual Feed	
Scanning modes	Simplex / Duplex, Color / Grayscale / Monochrome	
Image sensor type	Color CCD (Charge-coupled device) x 2 (front x 1, back x 1)	
Light source	White LED array <sup>1</sup>	
Document size	Maximum: A3 (297 x 420mm or 12 x 17in.) (long document scanning: 3,048mm (120in.)) Minimum: A8 Portrait (52 x 74mm or 2 x 3in.)	
Paper weight (Thickness)	Less than A5 size : 0.050 to 0.25mm (41 to 209g/m <sup>2</sup> , or 11 to 56lb) A4 to A5 size : 0.025 to 0.25mm (20 to 209g/m <sup>2</sup> , or 5.4 to 56lb) Over A4 : 0.050 to 0.25mm (41 to 209g/m <sup>2</sup> , or 11 to 56lb)	
Scanning speed (A4 Landscape) <sup>2</sup>	Color <sup>3</sup> Grayscale <sup>3</sup> Monochrome	Simplex : 130ppm (200,300dpi), Duplex: 260ipm (200,300dpi) (Duplex: 260ipm (200dpi), 250ipm (300dpi) *With CGA board)
Scanning speed (A4 Portrait) <sup>2</sup>	Color <sup>3</sup> Grayscale <sup>3</sup> Monochrome	Simplex : 100ppm (200, 300dpi), Duplex: 200ipm (200, 300dpi) (Duplex: 200ipm (200,300dpi) *With CGA board)
Paper chute capacity (A4 Landscape) <sup>4</sup>	500 sheets (A4: 80g/m <sup>2</sup> or 20lb)	
Expected daily volume	60,000 sheets/day	
Background colors	White / Black (Selectable)	
Optical resolution	600dpi	
Output resolution <sup>5</sup>	Color (24bit) Grayscale (8bit) Monochrome (1bit)	50 to 600dpi (adjustable by 1dpi increments) (100 / 150 / 200 / 240 / 300 / 400dpi *With CGA board)
Output format	Color:24bit,8bit(8bit and 4bit with driver) Grayscale:8bit(4bit with driver) Monochrome:1bit	
AD converter	1,024 levels (10bit)	
Interface <sup>6,7</sup>	Ultra SCSI, USB2.0. With CGA board: Ultra Wide SCSI, USB2.0	
Connector shape	Ultra SCSI: Shield type 50pin (pin type) , USB: B type With CGA board: Ultra Wide SCSI: Shield type 68pin(pin type), USB: B type	
SCSI Terminator	Built-in	
Image processing function	Dither / Error diffusion	
Power requirements	AC 100 to 240V ±10%	
Power consumption	Operating: 200W or less (Sleep mode: 4W or less <sup>8</sup> )	
Operating environment	Temperature: 15 to 35°C (59 to 95°F) Relative humidity: 20 to 80% (Non-condensing)	
Dimensions: Width x Depth x Height <sup>9</sup>	460 x 430 x 310mm (18.1 x 16.9 x 12.2in.) Installation space: 860 x 1,630 x 350mm (33.8 x 64.1 x 13.7in.)	
Weight	32kg	
Included software / drivers	TWAIN, ISIS™, ScandAll PRO, Adobe® Acrobat®, QuickScan™ Pro Demo, Image processing software, Kofax® VRS Professional, Scan to Microsoft SharePoint	
Environmental compliance	ENERGY STAR® and RoHS <sup>10</sup>	
Others	Multi-feed detection Long paper scanning <sup>11</sup>	Yes (Standard) ultrasonic multi-feed detection sensor x 3 3,048mm (120in.)
Included items	AC cable, USB cable, Setup DVD-ROM, Adobe® Acrobat® DVD-ROM, QuickScan™ Pro brochure	

<sup>1</sup> CLASS 1 LED PRODUCT

<sup>2</sup> Actual scanning speeds are affected by data transmission and software processing times.

<sup>3</sup> JPEG compressed figures.

<sup>4</sup> Maximum capacity varies, depending upon paper weight.

<sup>5</sup> Maximum output resolutions may vary, depending upon the size of the area being scanned and whether the scanner is scanning in simplex or duplex.

<sup>6</sup> You cannot use both SCSI and USB 2.0 interfaces at the same time.

<sup>7</sup> You cannot connect multiple computers to the scanner using each type of interface cables at the same time.

<sup>8</sup> Without CGA board interface

<sup>9</sup> Excluding the ADF hopper.

<sup>10</sup> PFU Limited, a Fujitsu company, has determined that this product meets RoHS requirements (2002/95/EC).

<sup>11</sup> Capable of scanning documents that exceed A3 size in length.

For long page scanning with standard I/F: Documents that exceed 432mm (17in.) are limited to 400dpi for lengths up to 863mm (34in.). Documents between 863mm and 3,048mm (120in.) in length are limited to 300dpi.

Multi-image documents up to 432mm in length are limited to 400dpi.

For long page scanning with VRS: Documents that exceed 432mm (17in.) are limited to 300dpi for lengths up to 1,778mm (70in.). Documents between 1,778mm and 3,048mm (120in.) in length are limited to 200dpi. Documents that exceed 432mm can be scanned under any resolution for lengths up to 1,016mm (40in.) when used with ISIS.

### Safety Precautions

- Be sure to carefully read all safety precautions prior to using this product and use this device as instructed.
- Do not place this device in wet, moist, steamy, dusty or oily areas. Using this product under such conditions may result in electrical shock, fire or damage to this product.
- Be sure to limit the use of this product to listed power ratings.



PFU Limited, a Fujitsu company, has determined that this product meets the ENERGY STAR® guidelines for energy efficiency. ENERGY STAR® is a registered trademark of the United States.

## Japan contact

### PFU LIMITED

International Sales Dept., Imaging Business Div.  
Solid Square East Tower, 580 Horikawa-cho, Saiwai-ku,  
Kawasaki-city, Kanagawa 212-8563, Japan  
Phone: (81-44) 540-4668 Fax: (81-44) 540-4639  
http://imagescanner.fujitsu.com/

## XXXXXXXX contact

### FUJITSU x x x x x x

x x x x x x x x x x x x  
x x x x x x x x x x x x  
x x x x x x x x x x x x  
Phone: (1-23) 456-7890 Fax: 123-456  
http://www. x x x x .com/

Please note that the scanning and printing of paper currency as well as stock and bond certificates is illegal. Specifications are subject to change without notice.

©2010 PFU LIMITED

Printed in Some country  
2010.3 U-053 KNT-50K1