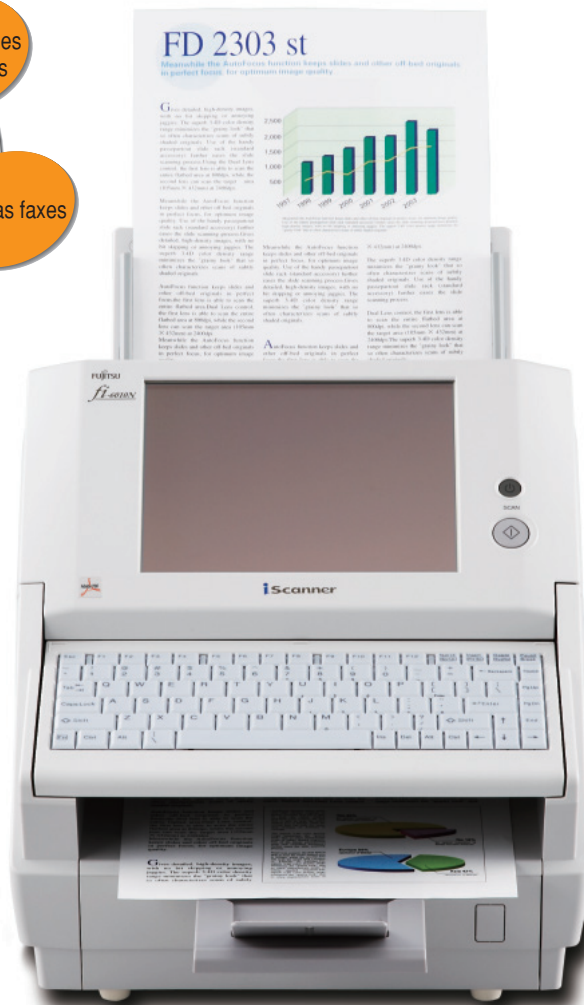
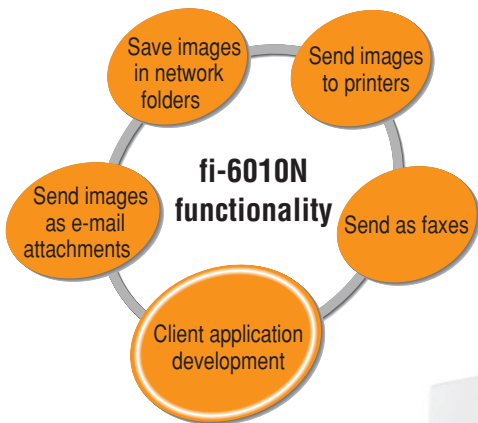


# iScanner

## fi-6010N

Superior fi-Series technology armed network scanner  
 “iScanner”— the birth of a new brand!



- Armed with the number one global share holding\* Fujitsu fi-Series scanner technology
- User friendly interface
- Useful office linking functionality enables users to easily save images in shared network folders, send scanned images to a printer and transmit generated data as faxes or e-mail attachments
- Useful “JOB function” supports the remote setting up of individualized “one touch” printing, saving or transmitting operability
- Centralized administration function supports simultaneous remote multi-unit settings
- Strengthened data transmission security
- Software development kit (SDK) available for client application development

\*1 This statement holds true for business scanners and is based upon PFU Ltd. calculations made using InfoTrends, Inc. data for Japan and North America (fiscal 2006) and InfoSource data for Europe (fiscal 2006).

Visit the fi-Series web site for ordering and purchasing information

<http://imagescanner.fujitsu.com/>

<b>A4</b> <sup>*1</sup>	<b>Color</b> <b>25</b> A4 ppm <sup>*2</sup>	<b>Mono.</b> <b>25</b> A4 ppm <sup>*2</sup>	<b>DUPLX</b>
-------------------------	---	---	--------------

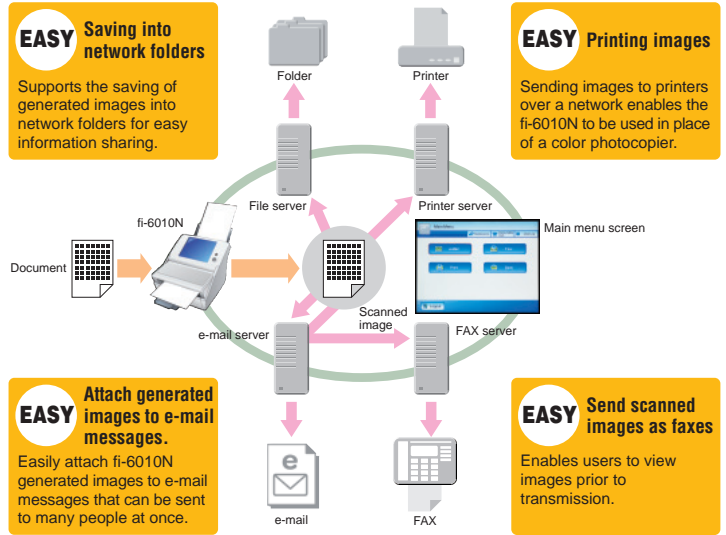
\*1 Supports A3/B4 scannability when documents are scanned with carrier sheets  
 \*2 A4 Portrait 200dpi

## Improves business scanning efficiency

- Excellent fi-Series inherited document feedability**  
The fi-6010N is able to scan A4 documents at an impressive 25ppm / 50ipm (Portrait, 200dpi).
- Built-in keyboard**  
The fi-6010N's built-in keyboard (US 101 type) simplifies data entry.
- Large color touch panel LCD**  
The fi-6010N's centrally located large color liquid-crystal display (LCD) (8.4 inch XGA) enables users to view scanned images for easy verification.
- Supports A3 and B4 document scanning**  
Use with carrier sheets enables the fi-6010N to scan documents that may be as large as B4 or A3 in size.
- Useful office linking functionality**  
The fi-6010N's office linking functionality improves efficiency by enabling users to easily save images in shared network folders, print it out<sup>1</sup> or transmit generated data as faxes<sup>2</sup> or e-mail attachments.
- "JOB function"**  
The fi-6010N's "JOB function" enables administrators to remotely set-up simple "one touch" printing, saving and transmission operability that meets each user's duties and scanning needs.

- Centralized administration function supports greater efficiency**  
This centralized administration function enables administrators to efficiently install settings into multiple fi-6010N scanners from one location. Furthermore, it enables administrators to set individual user environmental settings, operating conditions and add-in software settings as well as monitor individual unit status and operating status over the network. As a result, administrators are spared the task of entering settings into each fi-6010N scanner and efficiency is improved.
- Strengthened data transmission security**  
The fi-6010N supports secure encrypted FTPS<sup>3</sup> file transfers and encrypted data authentication with LDAPS<sup>4</sup> in order to facilitate "peace of mind".

<sup>1</sup> Scanned images are transmitted through a printer server. This function requires Windows® XP supporting printer drivers.  
<sup>2</sup> Uses Captaris, Inc. RightFax fax servers  
<sup>3</sup> FTPS is the abbreviation for File Transfer Protocol over SSL/TLS, an encrypted file transfer technology.  
<sup>4</sup> LDAPS is the abbreviation for Lightweight Directory Access Protocol over SSL/TLS, a directory data base access encryption protocol.



## Client application development

A fi-6010N software development kit (SDK) is available to assist with the development of scanning image display or keyword input settings, system linkages and other flexible client application development. Moreover, this SDK supports Microsoft® .NET Framework 3.5 for high performance application development.

## Technical Specifications

Product name		FI-6010N
Scanner type		ADF (Automatic Document Feeder)
Scanning modes		Simplex / Duplex, Color / Grayscale / Monochrome
Image sensor type		Color CCD (Charge-coupled device) x 2 (front x 1, back x 1)
Light source		White cold cathode discharge lamp x 2 (front x 1, back x 1)
Document size		Automatic document size detection: A4 (210 x 297mm), A5 (148 x 210mm), A6 (105 x 148mm), B5 (182 x 257mm), B6 (128 x 182mm), Letter (8.5 x 11in.), Legal (8.5 x 14in.), Executive (7.25 x 10.5in.), Post Card (100 x 148mm), Business Card (51 x 89mm) and Custom sizes: Maximum of 863mm in length Maximum*: A4 Portrait (210 x 297mm), Legal (8.5 x 14in.) Minimum: A8 Portrait (52 x 74mm) or 2 x 3in. *Supports A3/B4 scannability when documents are scanned with carrier sheets
Paper weight (Thickness)		52 to 127g/m <sup>2</sup> (14 to 34lb) and only supports 127g/m <sup>2</sup> (34lb) for A8 sheets
Scanning speed (A4 Portrait) <sup>1</sup>	Color	Simplex: 25ppm (200dpi)
	Grayscale	Duplex: 50ipm (200dpi)
	Monochrome	
Paper chute capacity <sup>2</sup>		50 sheets (Letter/A4, 80g/m <sup>2</sup> or 20 lb) (Active loadable ADF)
Optical resolution		600dpi
Output resolution <sup>3</sup>	Color (24bit)	
	Grayscale (8bit)	150 / 200 / 300 / 600dpi
	Monochrome (1bit)	
Output methods		E-mail attachments, send as faxes, Network folder, Print

Output file formats	TIFF, MTIFF, JPEG, PDF, Searchable PDFs, Password protected PDFs	
Authentication <sup>4</sup>	LDAP, LDAPS Windows® 2000 Server Active Directory Windows Server™ 2003 Active Directory Windows Server™ 2008 Active Directory	
Network interface	10BASE-T, 100BASE-TX	
Network protocols	TCP/IP, DHCP, SMTP, SMB, LDAP, NTP, FTP, HTTP	
Voltage or voltage range	AC 100 to 240V ±10%	
Power consumption	Operating: 88W or less (Sleep mode: less than 10W)	
Operating environment	Temperature: 5 to 35°C (42 to 95°F) Relative humidity: 20 to 80% (Non-condensing)	
Dimensions: Width x Depth x Height <sup>5</sup>	315 x 415 x 281mm (12.4 x 16.3 x 11.1in.)	
Weight	13 kg (28.7 lb)	
Environmental compatibility <sup>6</sup>	RoHS	
Display	LCD	8.4inch XGA (1024 x 768pixel) TFT Color monitor
	Touch panel	Analog resistive touch display
Keyboard	US101 keyboard	
Others	Multi-feed detection	Supported (Standard) ultrasonic multi-feed deflection sensor
	Long paper scanning <sup>7</sup>	863mm (34in.)

<sup>1</sup> Actual scanning speeds are affected by data transmission and software processing times.  
<sup>2</sup> Maximum capacity varies, depending upon paper weight.  
<sup>3</sup> Maximum output resolution may vary upon scanning range. In addition, Carrier Sheet scanning supports scanning at resolutions of up to 300dpi.  
<sup>4</sup> Please see the following website for details regarding fi-6010N supporting servers:  
<http://imagescanner.fujitsu.com/>  
<sup>5</sup> Excluding the ADF paper chute and stacker.  
<sup>6</sup> PFU Limited, a Fujitsu company, has determined that this product meets RoHS requirements (2005/95/EC).  
<sup>7</sup> The fi-6010N is capable of scanning documents that exceed A4 sheets in length.

## Options

Description	Part number	Comments
fi-6010N SDK (FI-601SDKW)	PA03544-K505	This software development kit (SDK) assists with the development of fi-6010N control related applications. Each package contains 5 carrier sheets. It is recommended that each carrier sheet be replaced after it has been used for 500 scans.
Carrier Sheet (FI-511ES-WW)	PA03360-0013	

## Consumables

Description	Part number	Comments
Pad Assy	PA03289-0111	Lifetime: Every 50,000 sheets or one year These rubber parts separate documents.
Pick Roller	PA03289-0001	Lifetime: Every 100,000 sheets or one year These rollers feed documents into the scanner.
Keyboard Cover	PA03544-K607 (China) PA03544-K609 (French-Canadian)	Keyboard covers are available to support multi-lingual usage.

## Trademarks

Please note that the scanning and printing of paper currency as well as stock and bond certificates is illegal.  
 \* Microsoft, Windows and Windows Server are registered trademarks of Microsoft Corporation in the United States and/or other countries.  
 \* Any other products or company names appearing in this document are the trademarks or registered trademarks of the respective companies.

## ⚠ Safety Precautions

- Be sure to carefully read all safety precautions prior to using this product and use this device as instructed.
- Do not place this device in wet, moist, steamy, dusty or oily areas. Using this product under such conditions may result in electrical shock, fire or damage to this product.
- Be sure to limit the use of this product to listed power ratings.

## Japan contact

**PFU LIMITED**  
 International Sales Dept., Imaging Business Div.  
 Solid Square East Tower, 580 Horikawa-cho, Saiwai-ku,  
 Kawasaki-city, Kanagawa 212-8563, Japan  
 Phone: (81-44) 540-4668 Fax: (81-44) 540-4639  
<http://imagescanner.fujitsu.com/>

## XXXXXXXX contact

**FUJITSU** x x x x x x x  
 x x x x x x x x x x x  
 x x x x x x x x x x x  
 x x x x x x x x x x x  
 x x x x x x x x x x x  
 Phone: (1-23) 456-7890 Fax: 123-456  
<http://www.x x x x .com/>