



THE POSSIBILITIES ARE INFINITE

Consulting

IT Solutions

Managed Services

MEETING THE GERSHON CHALLENGE

RECOMMENDATION 7 – SUSTAINABILITY OF ICT

GREEN ICT - SUSTAINABILITY ASSESSMENT

Government agencies need to better align their plans for managing ICT with the Government's sustainability agenda. To do this an understanding of the energy costs and the footprint of its ICT estate is necessary.

The Gershon review has highlighted some of the truths that face the ICT industry as a significant contributor to unavoidable climate change.

The review found various individual initiatives that had been implemented with good success but noted a lack of overall co-ordination or direction. The review also uncovered a lack of overall awareness of the energy usage of ICT assets.

As a result, the Gershon review has made a call to action for the Government and its agencies to develop ICT sustainability plans, green ICT procurement kits, and to begin addressing green ICT outcomes without delay.

HOW CAN FUJITSU HELP?

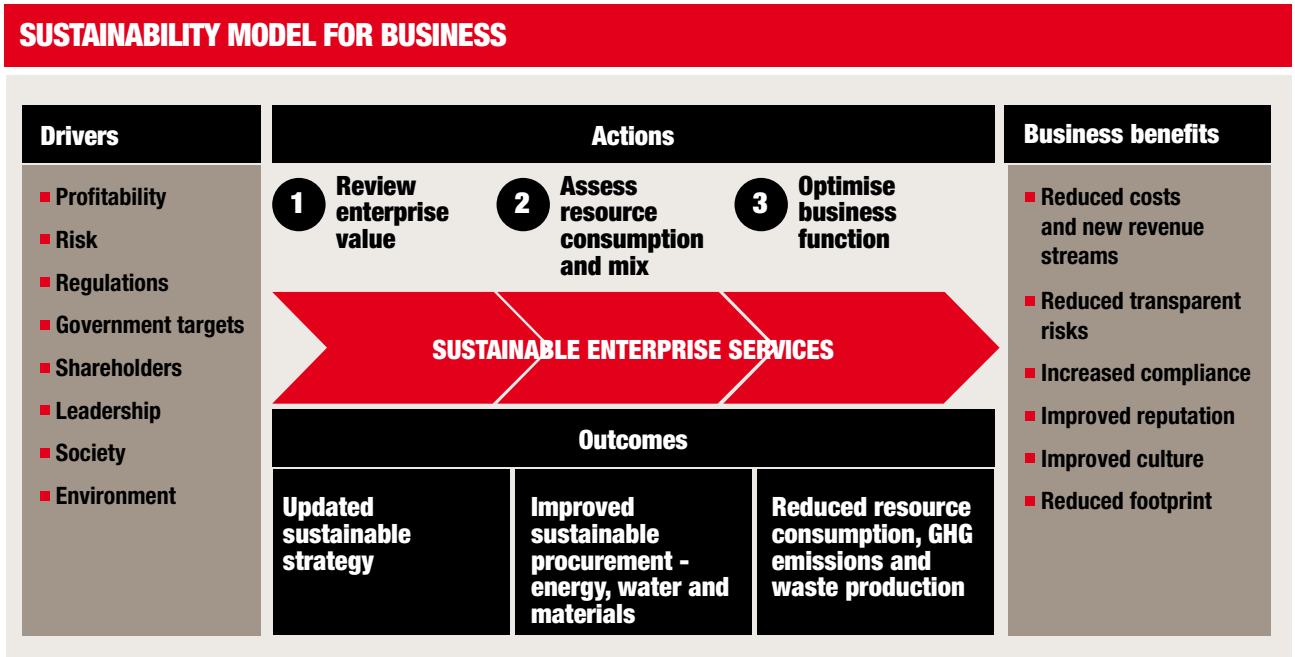
Fujitsu has an industry leading portfolio of sustainable enterprise services designed to prepare businesses for improvement opportunities. Fujitsu's Green IT framework outlines the tools and techniques that are required to achieve your agencies sustainability goals as depicted in the framework below.

It guides you through the strategy, procurement, rationalisation, efficiency and waste reduction aspects of ICT sustainability projects.

Our innovative approach will assist your agency in reducing its impact on the environment. The Fujitsu framework will align your ICT assets and use with the Government's overall agenda, and identify sustainability initiatives that will deliver real benefits.

EXAMPLE OF CLIENT SUCCESS:

For a large car company in Australia, Fujitsu partnered with the client IT department to develop a plan to reduce attributable greenhouse gas emissions in alignment with corporate objectives. We executed our extensive and detailed energy model by taking inputs from measurements, assets records and equipment characteristics to calculate a baseline and this enabled informed decisions on further planning and on going progress checks. An output of the work was a plan that had activities categorised by time to implement and emission savings. This clearly demonstrated the quick wins and the big benefits



FUJITSU'S GREEN IT SERVICES

FUJITSU FRAMEWORK FOR ALIGNING IT



PHASE ONE - REVIEW:

This phase focuses on understanding strategic intent and business drivers. Fujitsu examines how ICT aligns with your organisation's overall strategy, and develops a plan to achieve measurable sustainability targets.

PHASE TWO - ASSESS:

Fujitsu assesses your technology's impact on the environment. We determine energy consumption and associated greenhouse gas emissions by examining hardware and software inventories and overall power consumption. We use data modeling techniques and scenario based analysis to create an IT sustainability profile that highlights key focus areas. Fujitsu's IT savings model estimates the electricity consumption and emissions for all your IT assets.

We then move to Strategy Development with a focus on creating a sustainable approach with incentives for:

- Improving operations. Identifying unnecessary equipment through the reduction / reuse/recycle approach.
- Optimising infrastructure. Using techniques such as consolidation, virtualisation and power management.

- Managing energy use. Optimising the data centre environment, power sources and policies.
- Rationalising procurement and supply. Adopting a lifecycle-management strategy for procurement, and sourcing of products and services through a low-carbon directory.

PHASE THREE - OPTIMISE:

Fujitsu develops a project roadmap prioritising delivery programs using the Fujitsu IT Value framework. Project funding is also confirmed and projects implemented using the Fujitsu transformational model. The success of any sustainability project is dependent on staff adopting new ways of working.

Every sustainability initiative must be developed with a solid link to business benefits. The Fujitsu benefits realisation approach enables you to:

- Scope, plan, evaluate and deliver programs of business change to achieve your target benefits.
- Understand the underlying risks and assumptions of change programs.
- Measure each stage of the project to ensure benefits are achieved.

If you want to know more, contact:

Barry Bond, ACT Sales Manager

Phone: 02 6221 6615

Mobile: 0402 893 651

E-mail: barry.bond@au.fujitsu.com

ABOUTFUJITSU

Fujitsu Australia and New Zealand is a leading service provider of business, information technology and communications solutions. Throughout Australia and New Zealand we partner with our customers to consult, design, build, operate and support business solutions. From strategic consulting to application and infrastructure solutions and services, Fujitsu Australia and New Zealand have earned a reputation as the single supplier of choice for leading corporate and government organisations. Fujitsu Australia Limited and Fujitsu New Zealand Limited are wholly owned subsidiaries of Fujitsu Limited (TSE: 6702).

For further information visit:

AU.FUJITSU.COM NZ.FUJITSU.COM

